

PROBLEM GAMBLING SERVICES: 5-YEAR STRATEGIC VISION

OUR PROGRAM AND PARTNERS ARE:

Preventing and reducing gambling-related harm and supporting wellness and recovery

Ready to engage in sustainable change

Dedicated to equitable and inclusive environments that will improve the outcomes of those we serve

STRATEGIC PLANNING

Assessment, Planning, Evaluation

IMPROVEMENT

Continuously strive to improve programs, processes, and outcomes to meet emerging needs and challenges

ACCOUNTABILITY

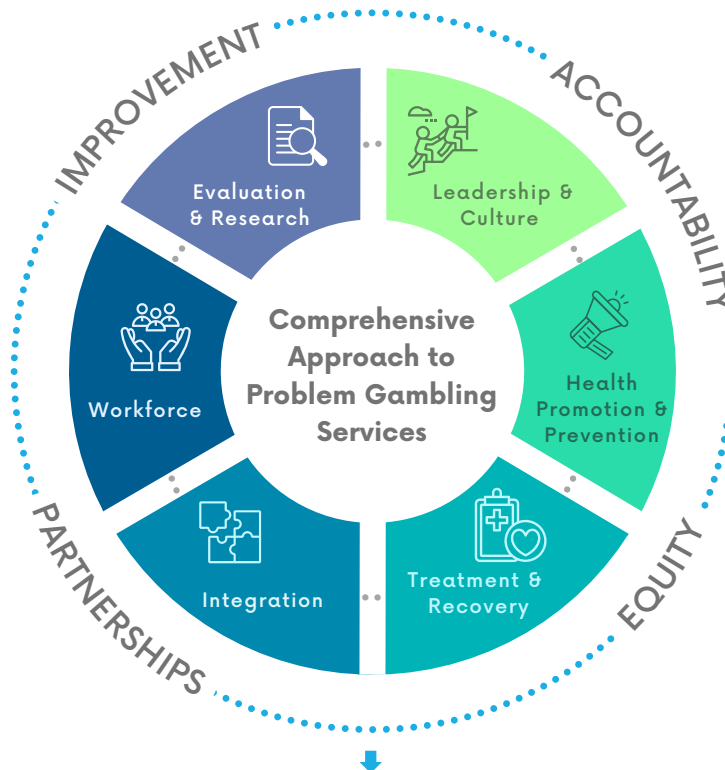
Serve as a responsible steward of public funds, promote excellence, and demonstrate success

PARTNERSHIPS

Engage our partners and the communities we serve throughout the policymaking and implementation process

EQUITY

Reduce health inequities and increase inclusivity to realize better care, better health and lower costs



COMMUNITY OUTCOMES

Enhanced capacity and infrastructure to reduce gambling-related harm that supports economic and public health



Enhanced capacity and infrastructure to prevention and reduce gambling related harm



Empower the community through health promotion & problem gambling prevention efforts



Greater integration of problem gambling interventions into broader health systems



Increased workforce capability & capacity



Enhanced data informed program & policy decisions

IMPACT

Improved health and well-being of Oregonians