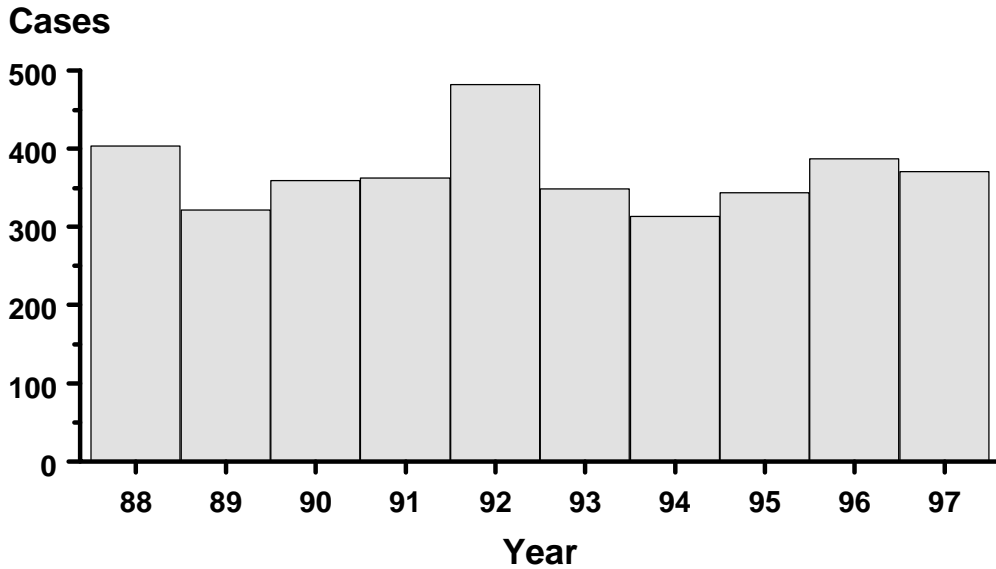
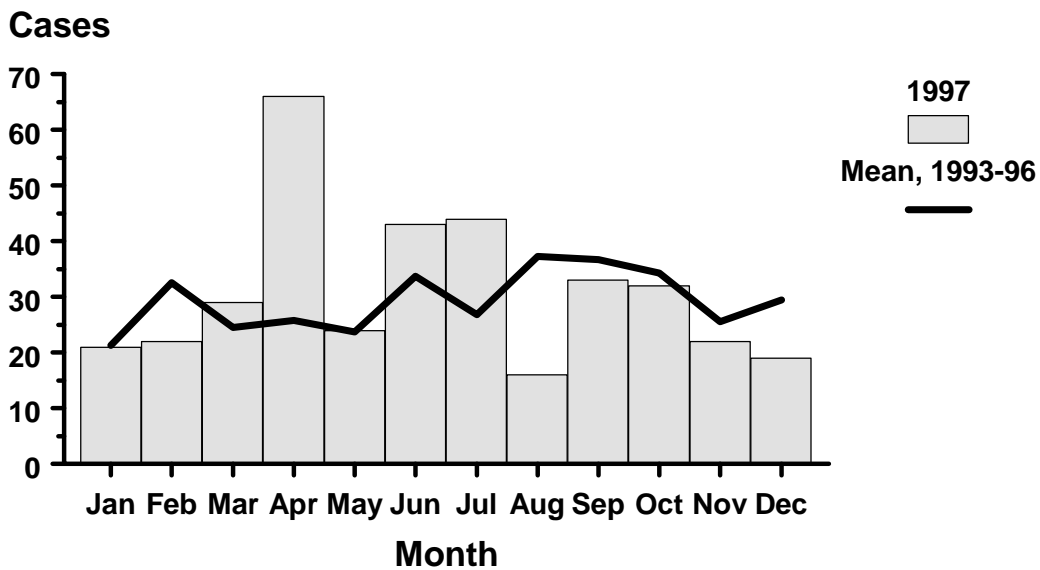


## Salmonellosis, by Year Oregon, 1988-1997

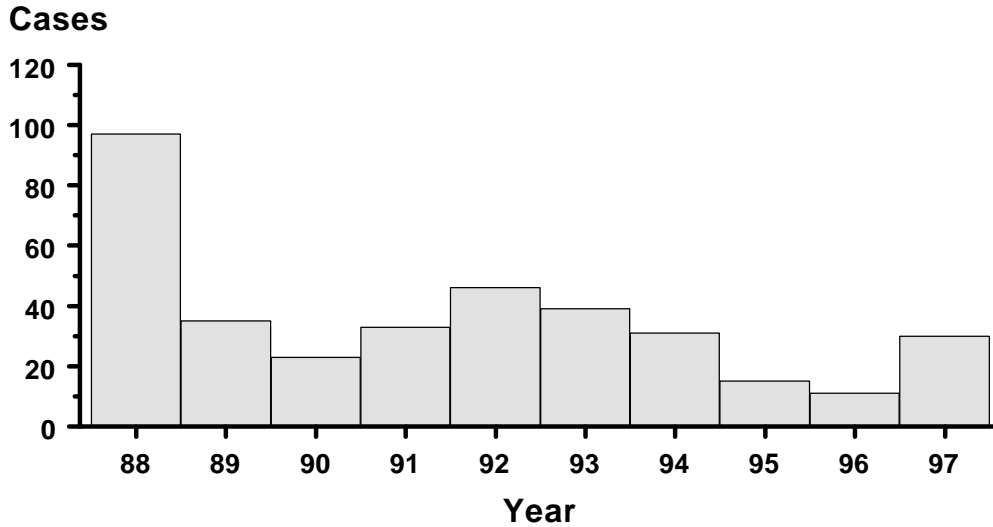


## Salmonellosis, by Month Oregon, 1997

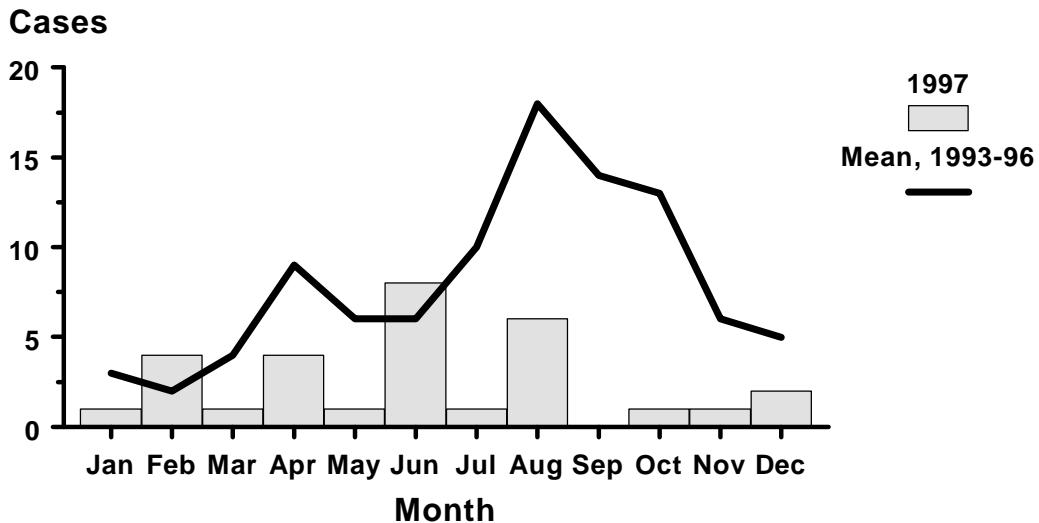




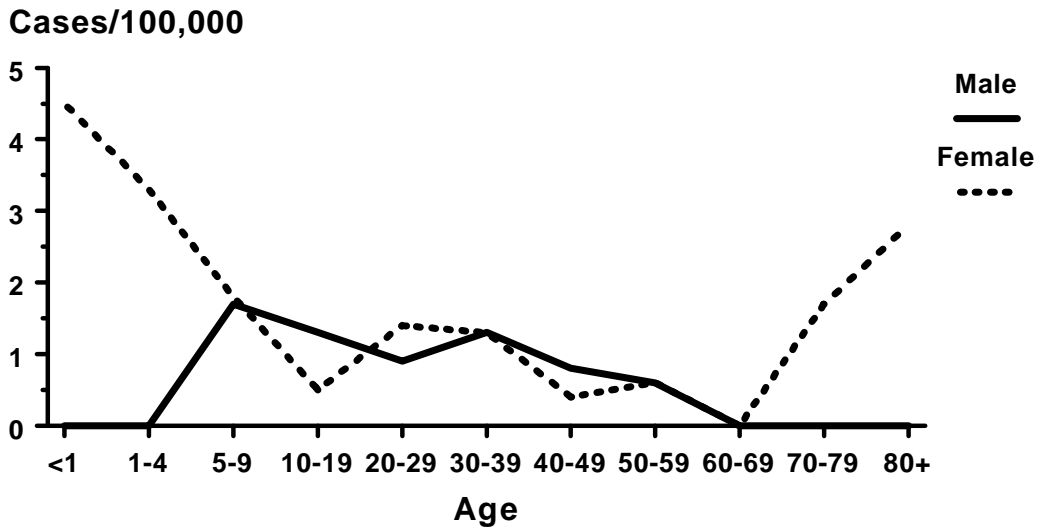
## Salmonella Heidelberg Infection, by Year Oregon, 1988-1997



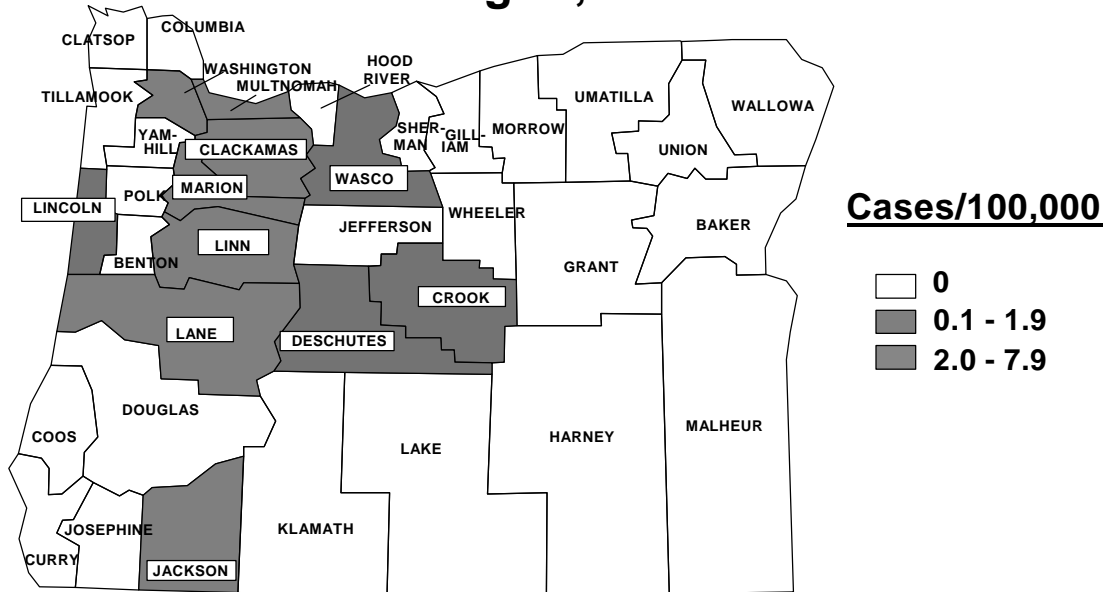
## Salmonella Heidelberg Infection, by Month Oregon, 1997



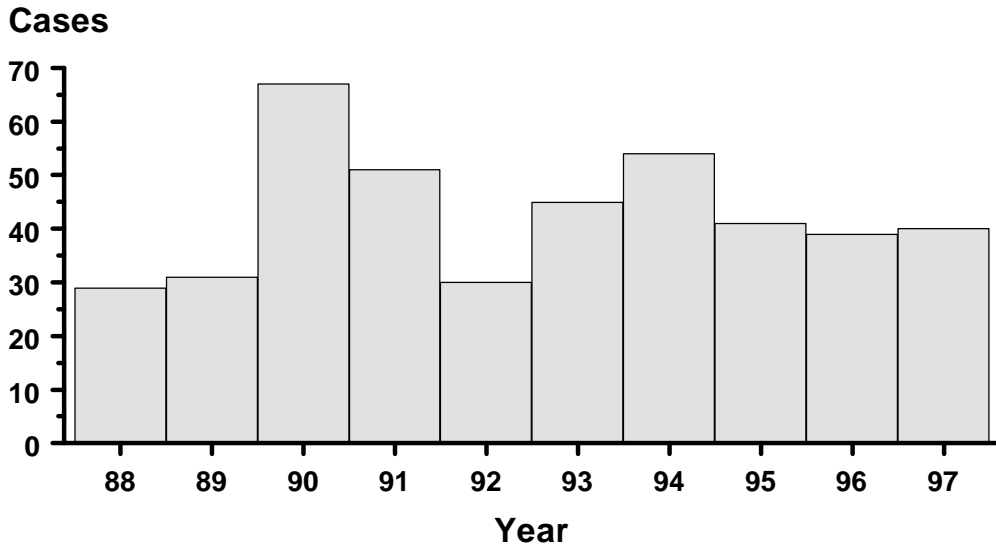
## Incidence of *Salmonella* Heidelberg Infection, by Age and Sex Oregon, 1997



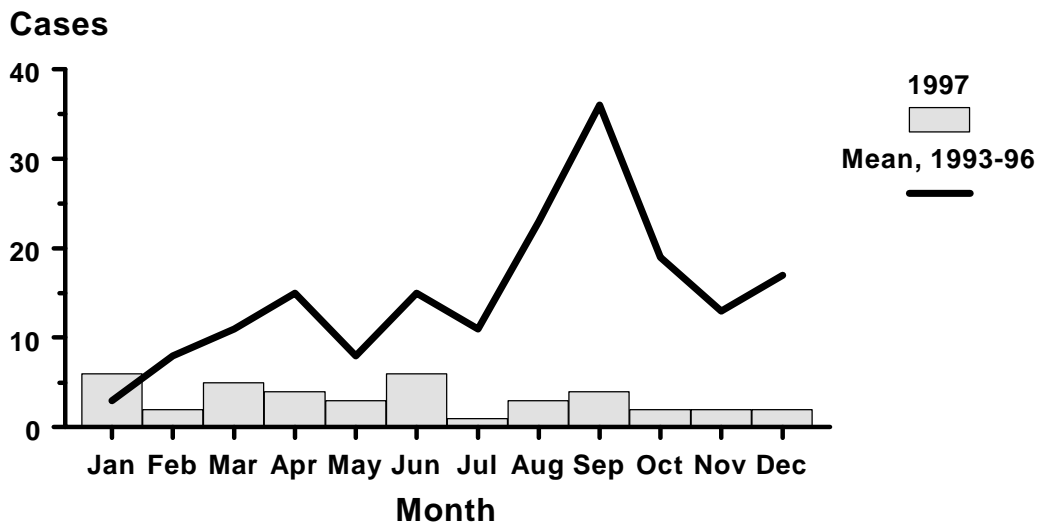
## Incidence of *Salmonella* Heidelberg Infection, by County Oregon, 1997



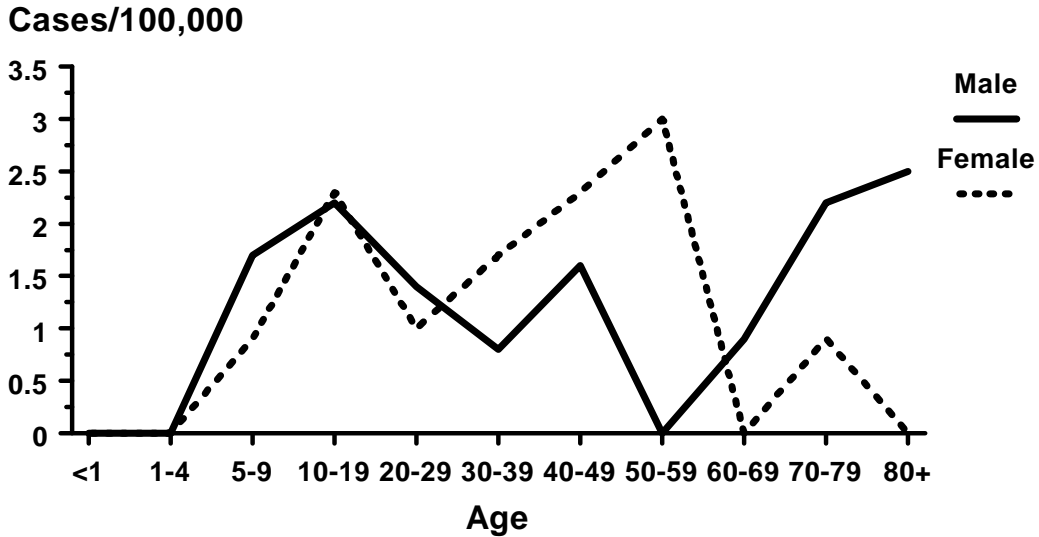
## ***Salmonella Enteritidis,*** **by Year** **Oregon, 1988-1997**



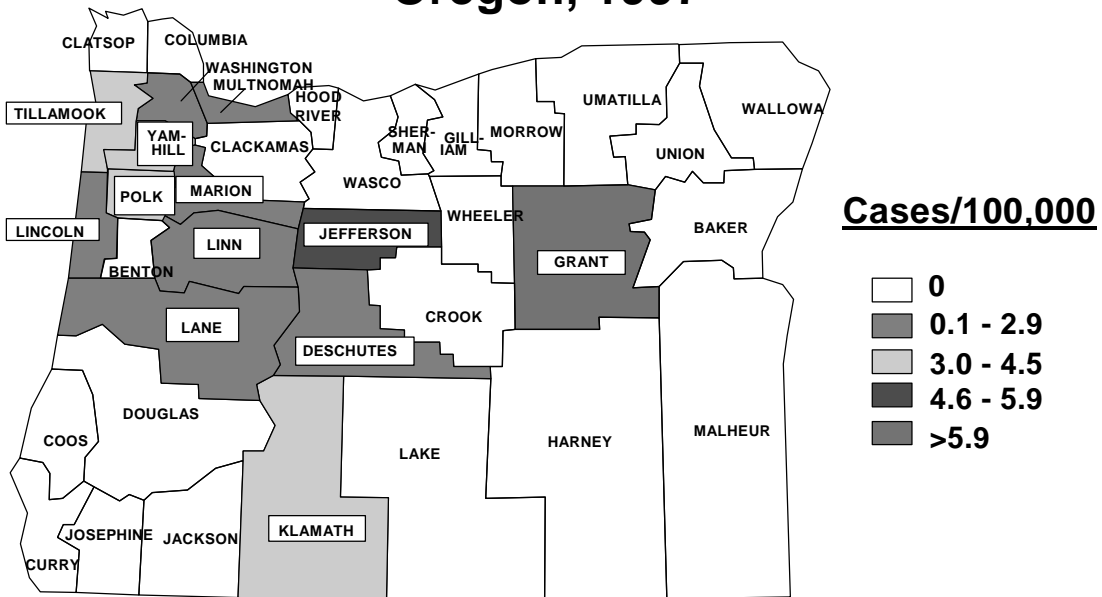
## ***Salmonella Enteritidis Infection,*** **by Month** **Oregon, 1997**



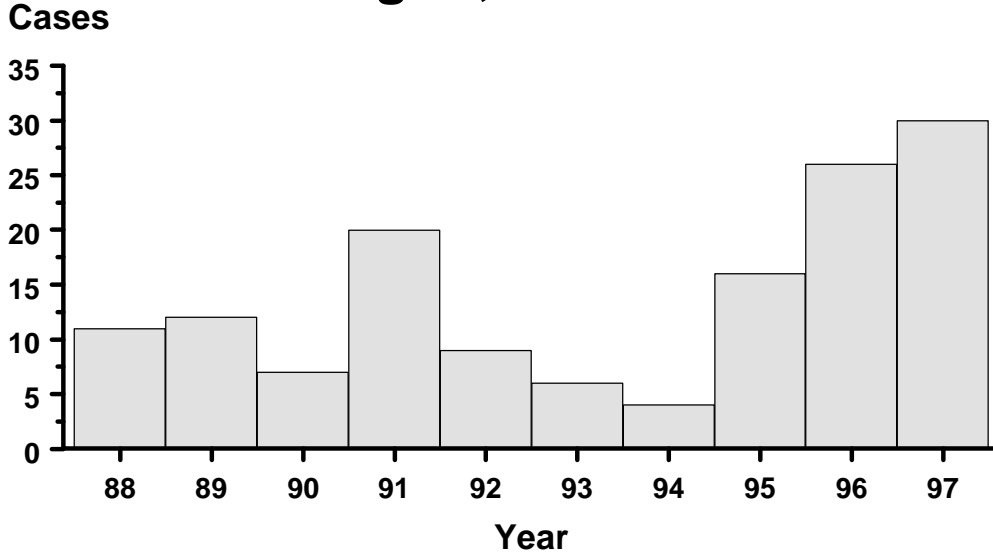
## Incidence of *Salmonella* Enteritidis Infection, by Age and Sex Oregon, 1997



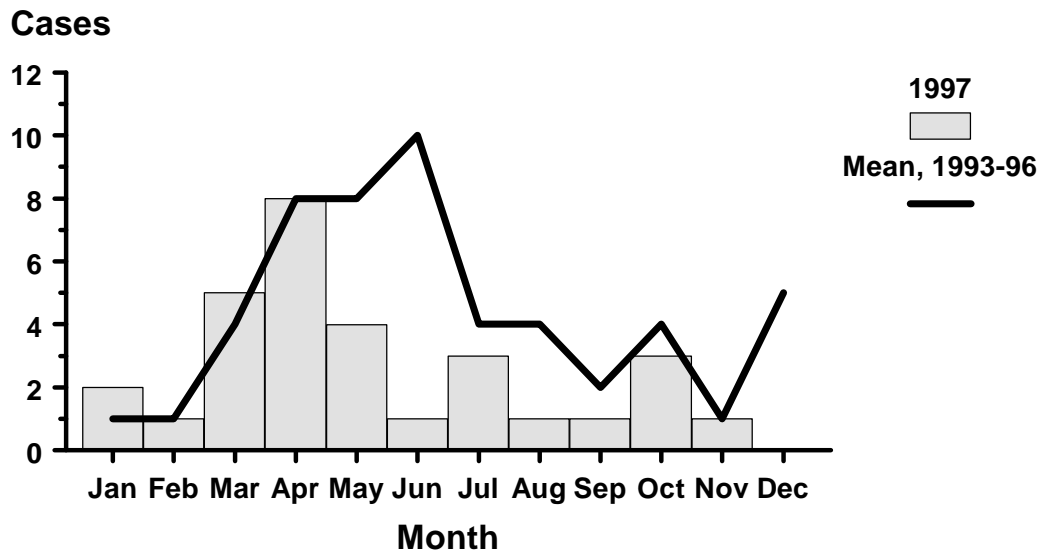
## Incidence of *Salmonella* Enteritidis Infection, by County Oregon, 1997



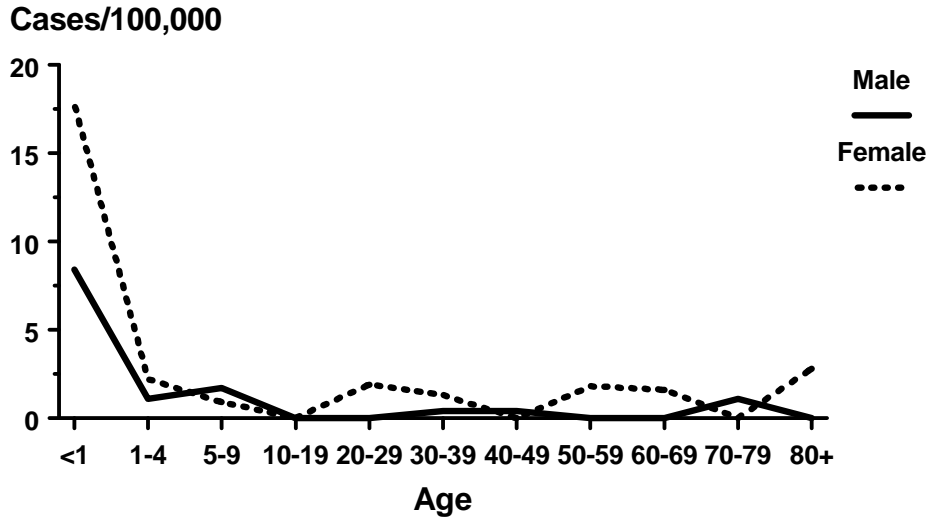
## Salmonella Montevideo Infection, by Year Oregon, 1988-1997



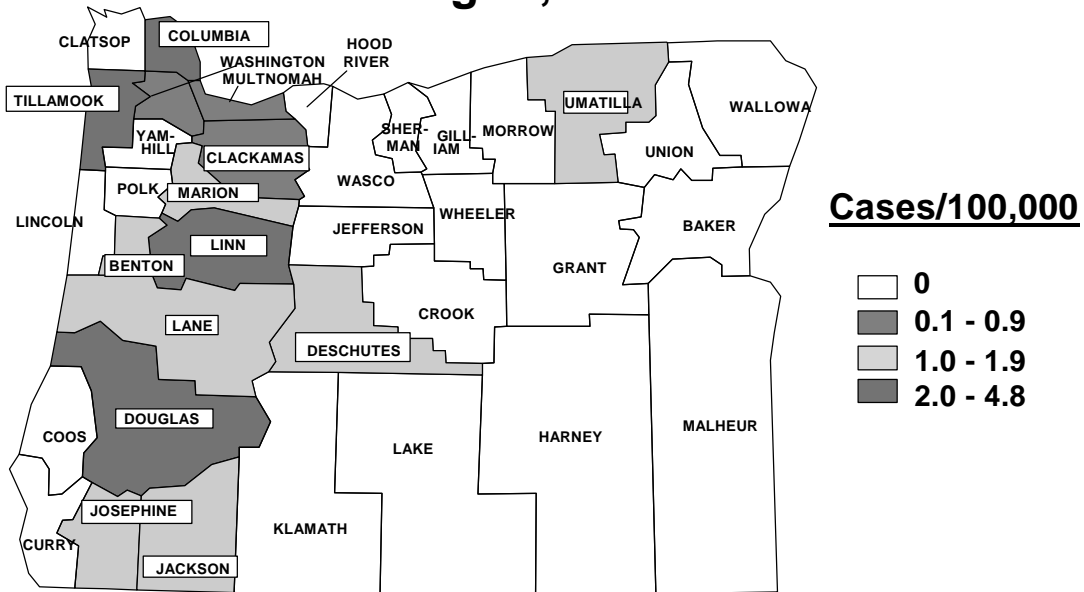
## Salmonella Montevideo Infection, by Month Oregon, 1997



## Incidence of *Salmonella* Montevideo Infection, by Age and Sex Oregon, 1997

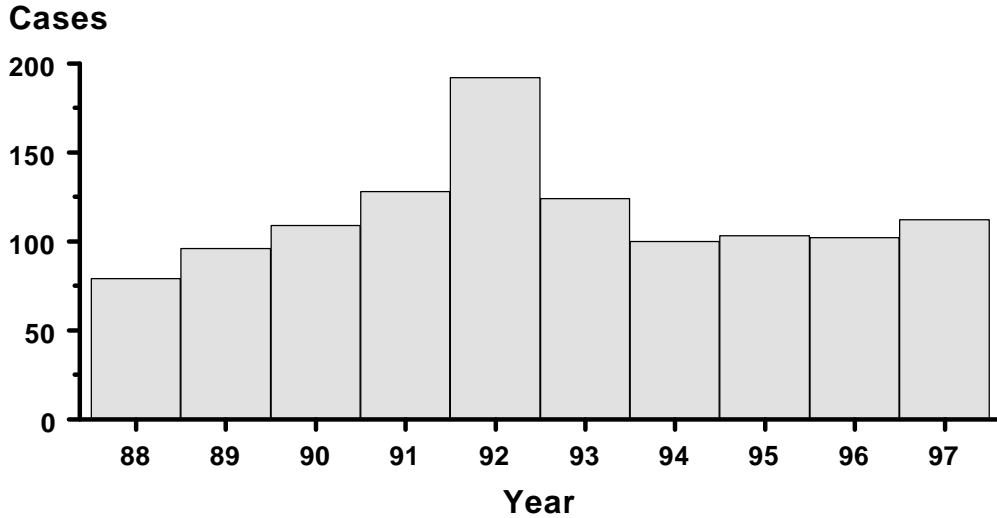


## Incidence of *Salmonella* Montevideo Infection, by County Oregon, 1997

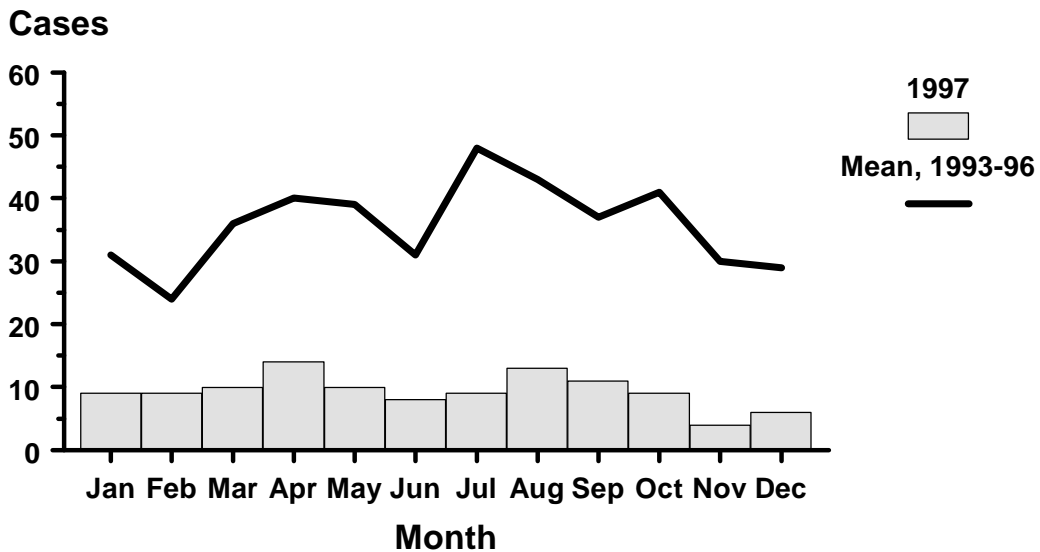




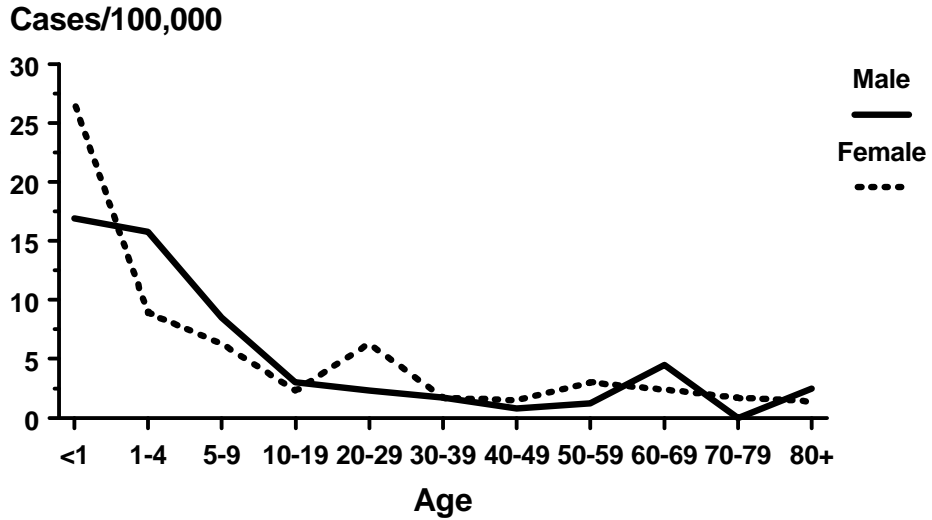
## **Salmonella Typhimurium Infection, by Year Oregon, 1988-1997**



## **Salmonella Typhimurium Infection, by Month Oregon, 1997**



## Incidence of *Salmonella* Typhimurium Infection, by Age and Sex Oregon, 1997



## Incidence of *Salmonella* Typhimurium, Infection by County Oregon, 1997

