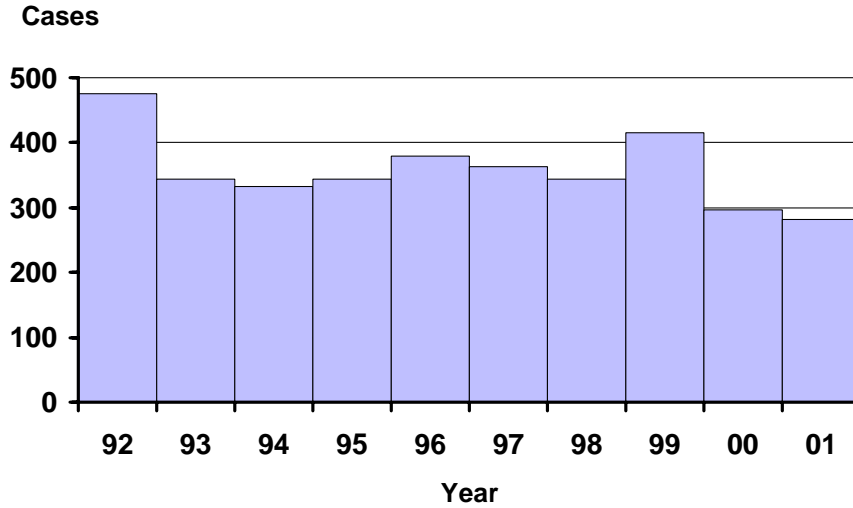
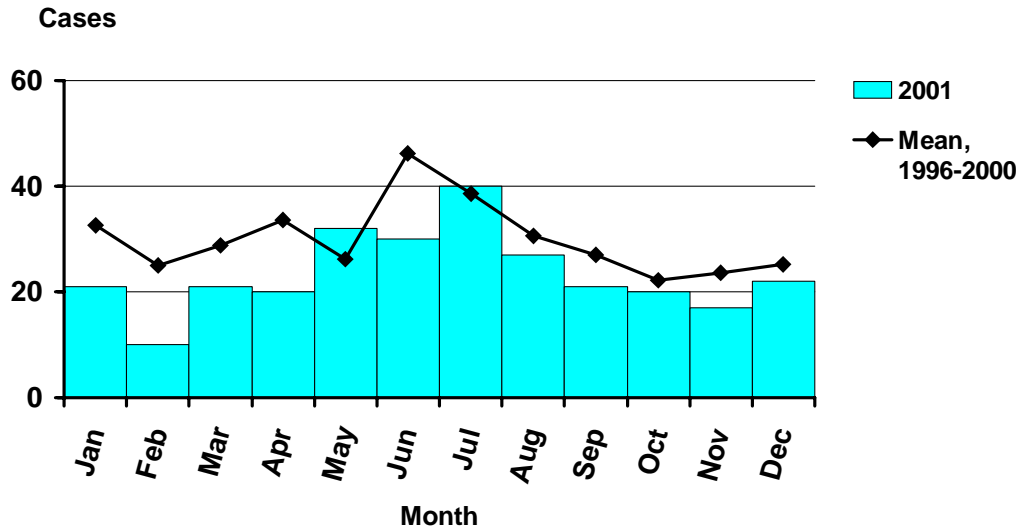


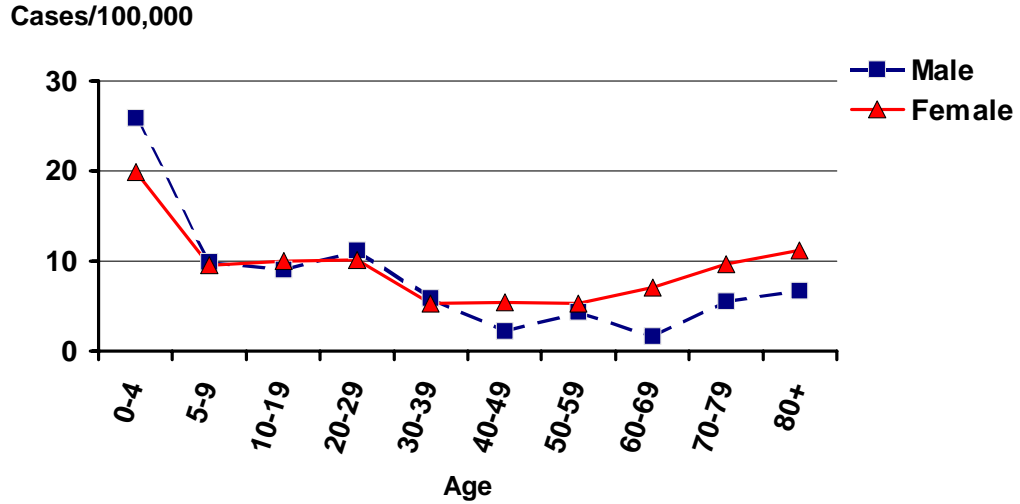
Salmonellosis by Year Oregon, 1992-2001



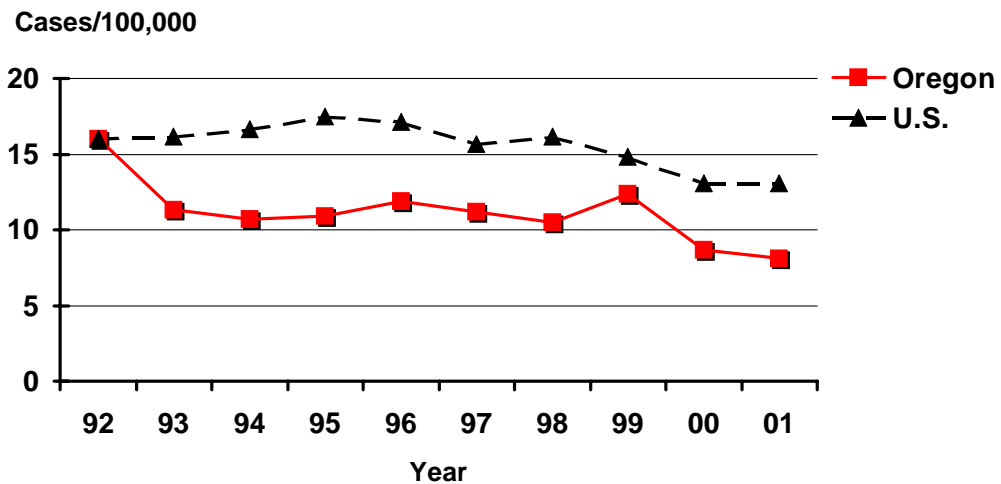
Salmonellosis by Onset Month Oregon, 2001



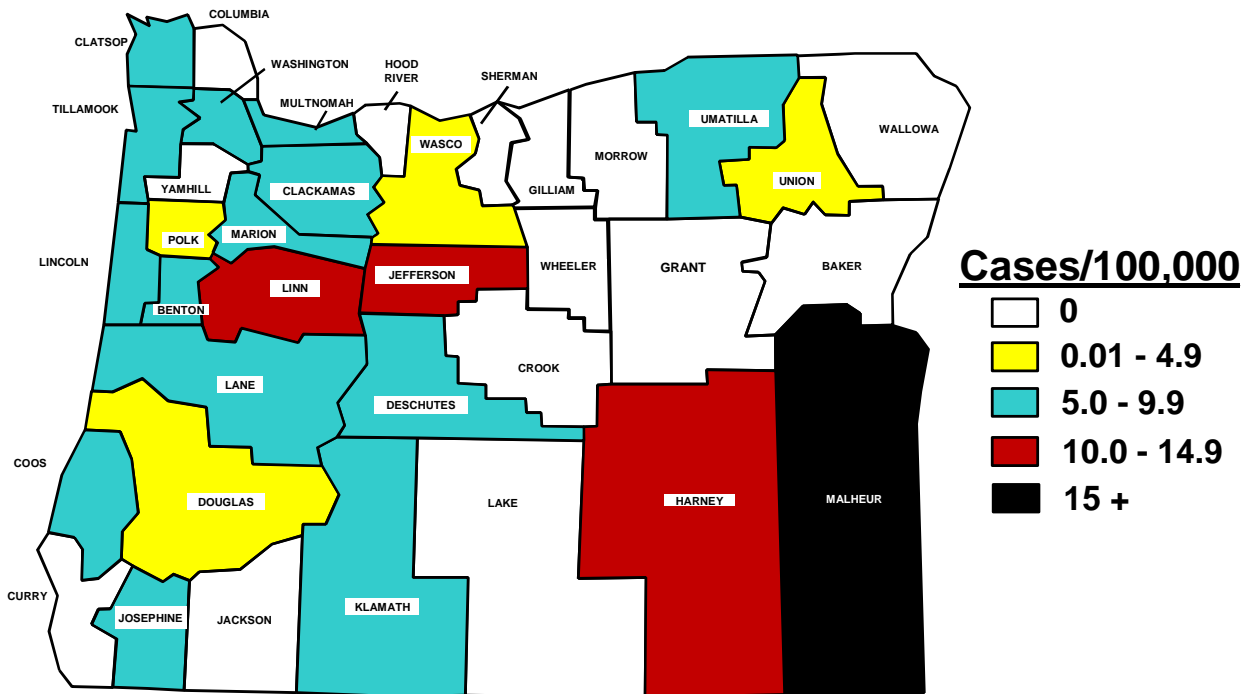
Incidence of Salmonellosis by Age and Sex Oregon, 2001



Incidence of Salmonellosis Oregon vs. Nationwide 1992-2001



Incidence of Salmonellosis by County Oregon, 2001



***Salmonella* by Serotype**

Oregon, 2001

SEROTYPE	No.	%	SEROTYPE	No.	%
Typhimurium	86	30.6	Adelaide	1	0.3
Enteritidis	34	12.1	Agona	1	0.3
Heidelberg	26	9.3	Alachua	1	0.3
Newport	16	5.7	Anatum	1	0.3
Montevideo	13	4.6	Berta	1	0.3
Oranienburg	10	3.6	Carmel	1	0.3
Paratyphi B, var. Java	9	3.2	Cerro	1	0.3
Muenchen	8	2.8	Ceyco	1	0.3
Braenderup	7	2.5	Chester	1	0.3
IE1::e,h:(-)	5	1.8	Derby	1	0.3
Stanley	5	1.8	Dublin	1	0.3
Infantis	4	1.4	IB:b:-	1	0.3
Javiana	4	1.1	IIIa41:Z4,Z23	1	0.3
Saintpaul	4	1.4	Kiambu	1	0.3
Thompson	4	1.4	Manhattan	1	1.3
Poona	3	1.1	Marina	1	0.3
Blockey	2	0.7	NNIV44Z4,Z23:-	1	0.3
Give	2	0.7	Onderstepoort	1	0.3
Hadar	2	0.7	Urbana	1	0.3
IC1::-1,5	2	0.7	Weltevreden	1	0.3
Kottbus	2	0.7	Worthington	1	0.3
Oslo	2	0.7			
Schwarzengrund	2	0.7			
Virchow	2	0.7			