

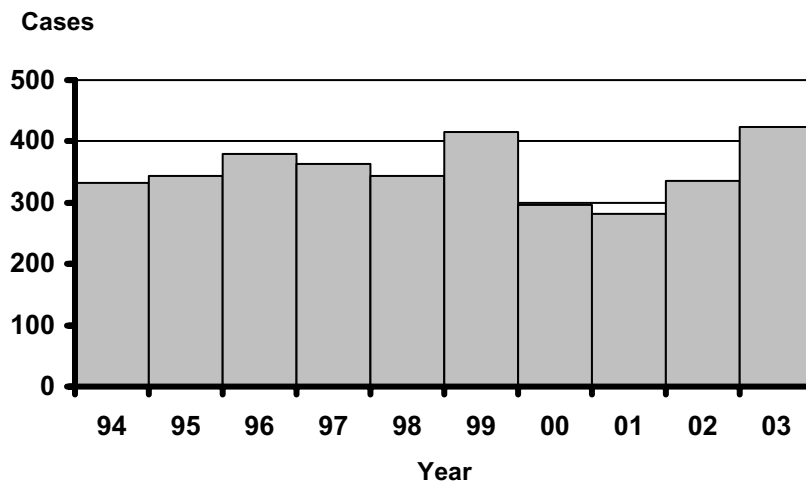
Salmonellosis

Salmonellosis is bacterial illness characterized by acute abdominal pain, diarrhea, and often fever that begins 12 hours to 5 days after infection. In cases of enterocolitis, fecal excretion usually persists for several days or weeks beyond the acute phase of illness; antibiotics generally have no effect on the illness and, in fact, may increase the duration of excretion of organisms.

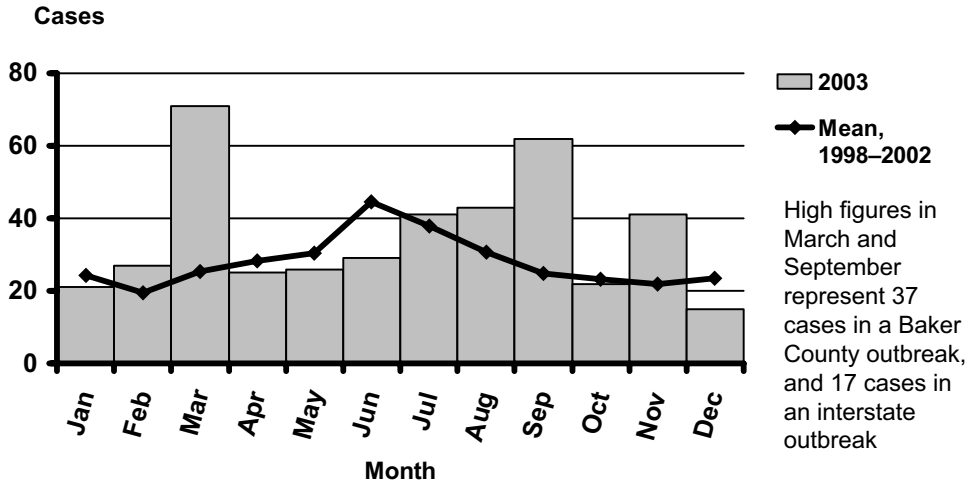
The majority of human infections are thought to result from the ingestion of fecally contaminated food or water. Undercooked or raw products of animal origin such as eggs, milk, meat, and poultry have been implicated as common sources of human salmonellosis. A wide range of domestic and wild animals are carriers of *Salmonella*, including poultry, swine, cattle, rodents, iguanas, tortoises, turtles, terrapins, chicks, dogs and cats. Though uncommon, person-to-person spread can occur in humans — via patients, convalescent carriers and, especially, mild and unrecognized cases. The incidence of infection is highest in infants and young children.

Of approximately 2,500 known serotypes, only about 200 are detected in the US in any given year. In Oregon, *S. Typhimurium* and *S. Enteritidis* are the two most commonly reported.

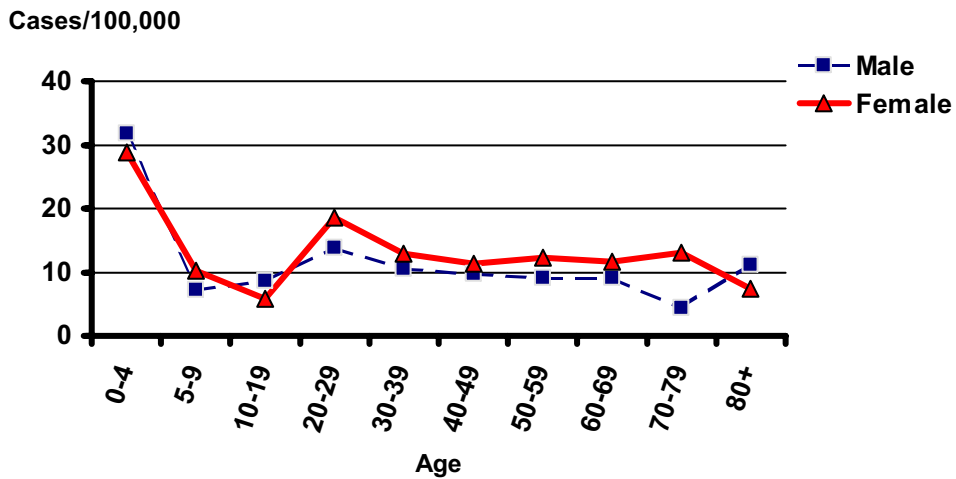
Salmonellosis by Year Oregon, 1994–2003



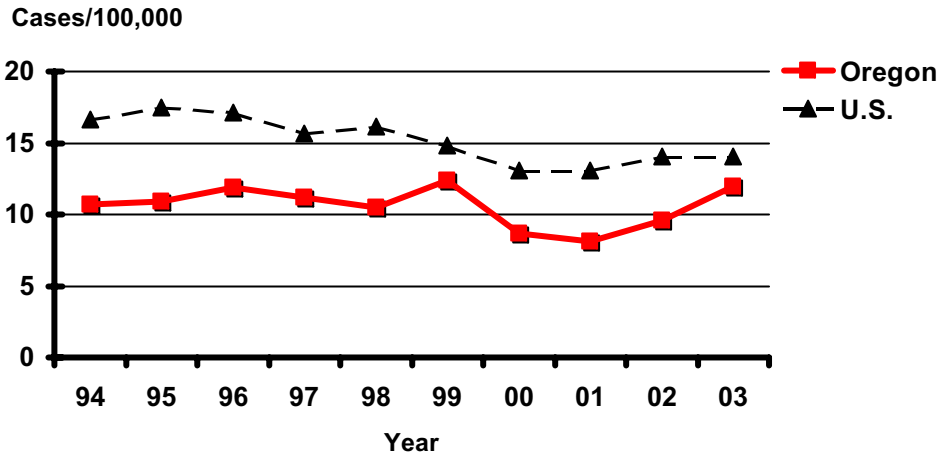
Salmonellosis by Onset Month Oregon, 2003



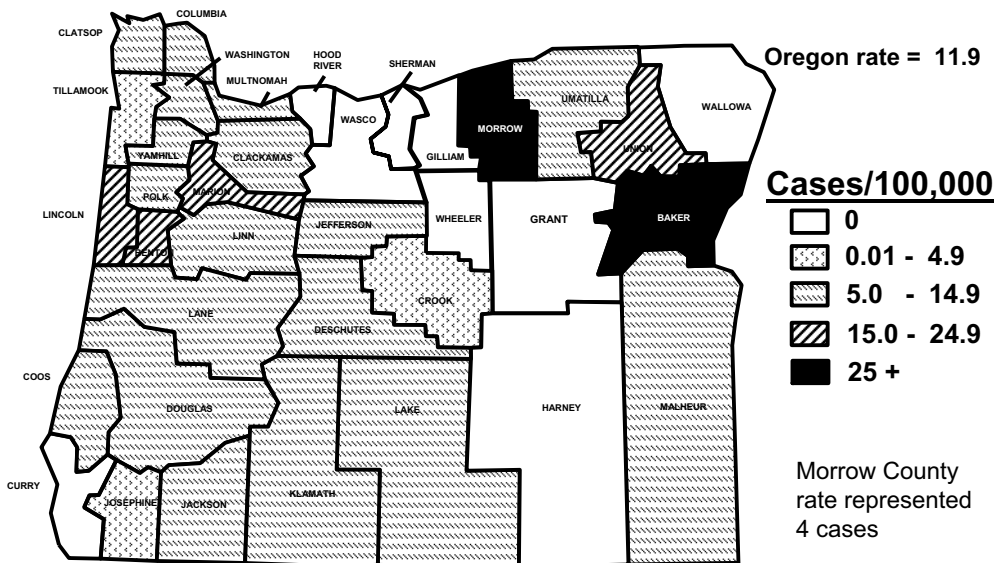
Incidence of Salmonellosis by Age and Sex Oregon, 2003



Incidence of Salmonellosis Oregon vs. Nationwide 1994–2003



Incidence of Salmonellosis by County Oregon, 2003



Salmonella by Serotype, Oregon 2003

Agona	8	1.9	Lomalinda	1	0.2
Anatum	2	0.5	London	1	0.2
Braenderup	1	0.2	Mbandaka	1	0.2
Brandenburg	1	0.2	Molade	1	0.2
Chester	16	3.8	Montevideo	16	3.8
Clackamas	3	0.7	Muenchen	5	1.2
Concord	1	0.2	Muenster	2	0.5
Cubana	1	0.2	Newport	38	9.0
Dublin	3	0.7	Ohio	2	0.5
Eastbourne	1	0.2	Oranienburg	13	3.1
Edinburg	1	0.2	Panama	4	0.9
Enteriditis sp.	78	18.4	Paratyphi A	2	0.5
Haardt	2	0.5	Paratyphi B, var. Java	7	1.7
Hadar	6	1.4	Poano	1	0.2
Hartford	3	0.7	Pomona	1	0.2
Havana	1	0.2	Poona	3	0.7
Heidelberg	28	2.8	Reading	1	0.2
Indiana	1	0.6	Saintpaul	36	8.5
Infantis	2	0.3	Senftenberg	1	0.2
Itami	1	0.2	Stanley	5	1.2
Javiana	4	0.9	Thompson	2	0.5
Kiambu	2	0.5	Typhimurium	82	19.3
			Weltevreden	2	0.5
			Other	15	3.6