

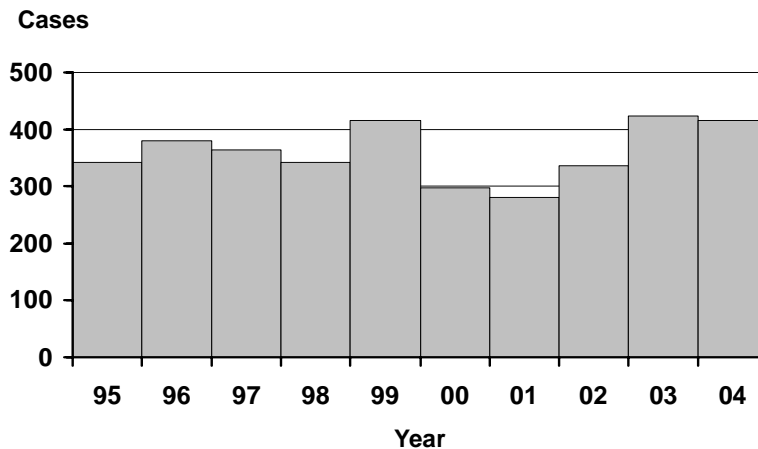
Salmonellosis

Salmonellosis is bacterial illness characterized by acute abdominal pain, diarrhea, and often fever that begins 12 hours to 5 days after infection. In cases of enterocolitis, fecal excretion usually persists for several days or weeks beyond the acute phase of illness; antibiotics generally have no effect on the illness and, in fact, may increase the duration of excretion of organisms.

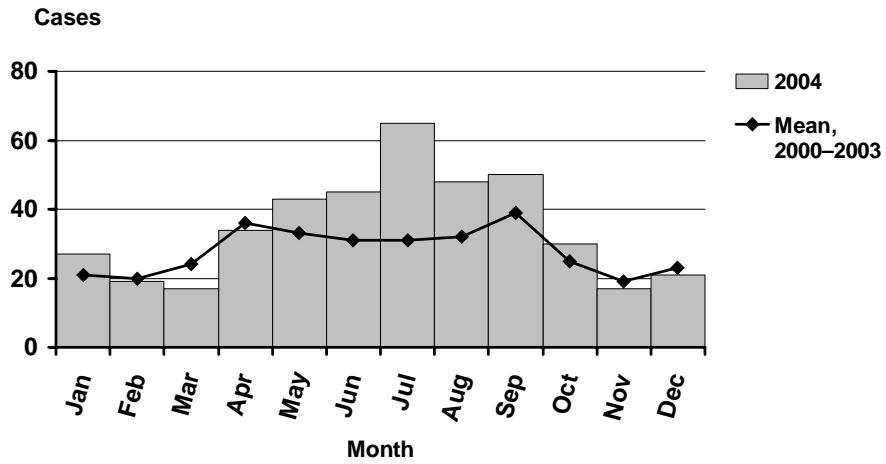
The majority of human infections are thought to result from the ingestion of fecally contaminated food or water. Undercooked or raw products of animal origin such as eggs, milk, meat, and poultry have been implicated as common sources of human salmonellosis. More recently, produce (cantaloupe, alfalfa sprouts) has been a common source of infection. A wide range of domestic and wild animals are carriers of *Salmonella*, including poultry, swine, cattle, rodents, iguanas, tortoises, turtles, terrapins, young poultry, dogs and cats. Though uncommon, person-to-person spread can occur in humans — via patients, convalescent carriers and, especially, mild and unrecognized cases. The incidence of infection is highest in infants and young children.

Of approximately 2,500 known serotypes, only about 200 are detected in the US in any given year. In Oregon, *S. Typhimurium* and *S. Enteritidis* are the two most commonly reported.

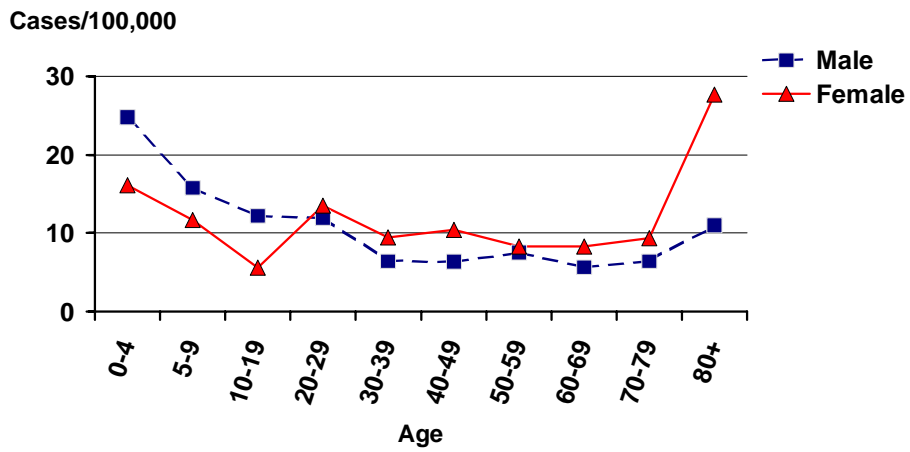
Salmonellosis by Year Oregon, 1995–2004



Salmonellosis by Onset Month Oregon, 2004



Incidence of Salmonellosis by Age and Sex Oregon, 2004



Selected* Salmonella by Serotype, Oregon, 2004

	2001	2002	2003	2004		2001	2002	2003	2004
	#	#	#	#		#	#	#	#
Agona	1	4	8	7	Montevideo	13	17	16	15
Albany		1		2	Muenchen	8	10	5	7
Amager				3	Muenster			2	2
Anatum	1	2	2	6	Newport	16	31	38	14
Bovismorbificans				17	Oranienburg	10	12	13	6
Braenderup	7	4	1	2	Oslo	2			2
Clackamas		4	3	1	Panama		2	4	1
Dublin	1	1	3	3	Paratyphi B var. Java	9	9	9	17
Ealing				1	Poano			1	1
Edinburg			1	1	Poona	3	7	3	4
Enteritidis	34	48	78	60	Reading		3	1	3
Gaminara				1	Saintpaul	4	18	36	16
Haardt			2	1	Sandiego		1		1
Hadar	2	9	6	3	Schwarzengrund	2	1		1
Havana			1	2	Senftenberg		3	1	2
Heidelberg	26	27	12	37	Singapore				1
Ibadan				1	Stanley	5	4	5	2
Infantis	4	1	2	10	Tennessee		1		1
Jangwani				1	Thompson	4	1	2	1
Javiana	4	3	3	1	Typhimurium	86	67	79	85
Kiambu	1		2	1	Volkmarsdorf				1
Litchfield				2	Other serotype	275	319	393	30
Mbandaka			1	2	Unknown	5	16	31	22
Michigan				1	Total	280	335	424	415

* must have at least one case in 2004, other serotypes not listed might have been reported in previous years