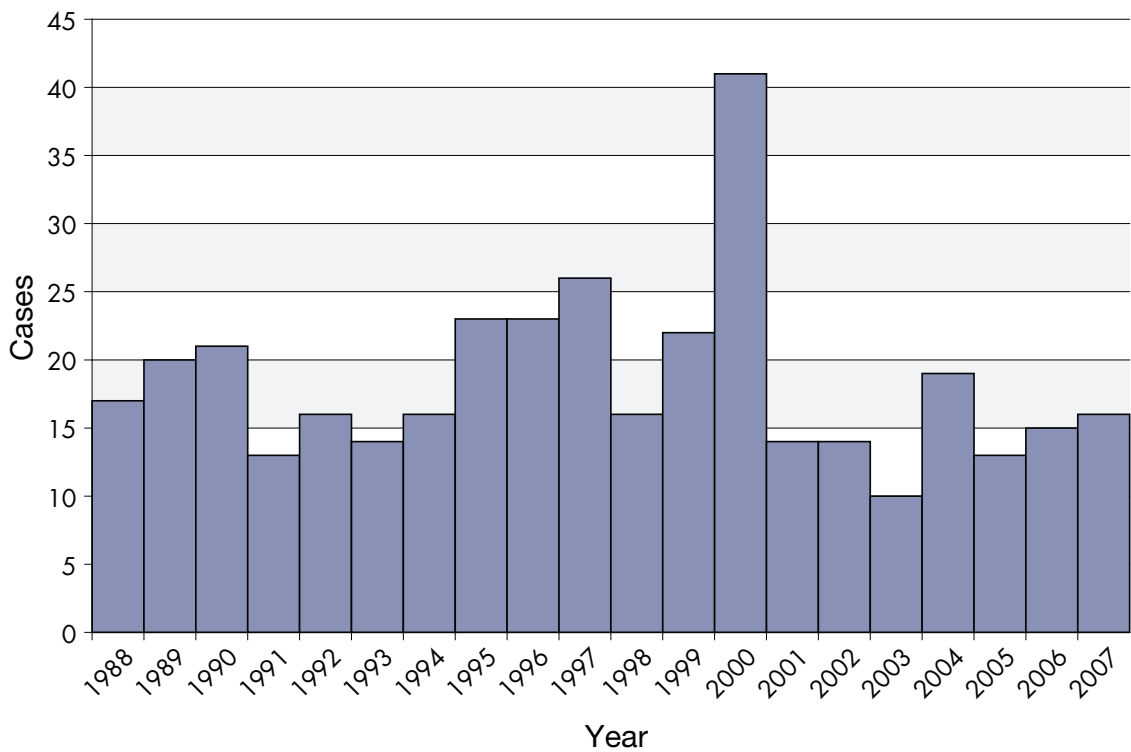


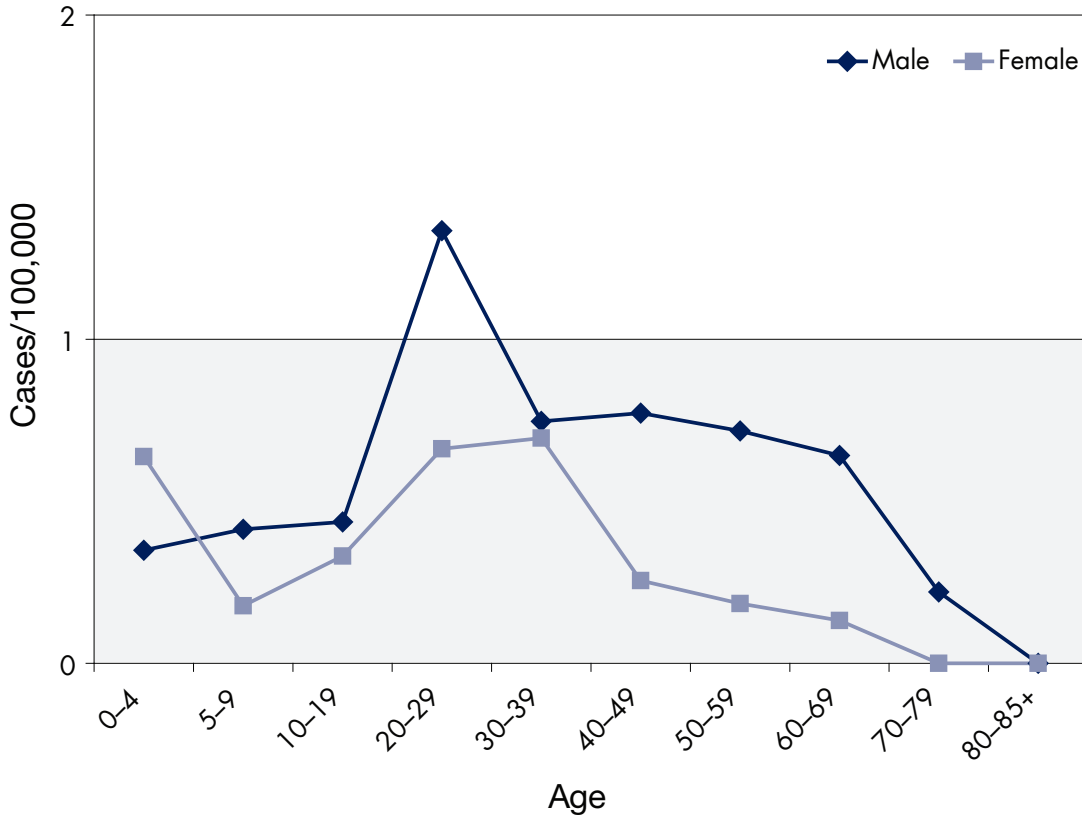
## Malaria

Worldwide, malaria is one of the most devastating of the communicable diseases, causing perhaps 1 million to 2 million deaths annually, not to mention an enormous burden of disability and medical costs. While transmission has not been documented in Oregon for decades, malaria is reported every year; all cases have resulted from exposures outside the United States. Competent anopheline mosquitoes are resident in Oregon, so limited local transmission remains a theoretical possibility. Oregon rates are similar to the national average. Oregon surveillance data contributes to the national database, which is used to tailor recommendations for prophylaxis and treatment. *Plasmodium falciparum* (the most severe of the four human parasite species) was the most commonly reported flavor in 2007.

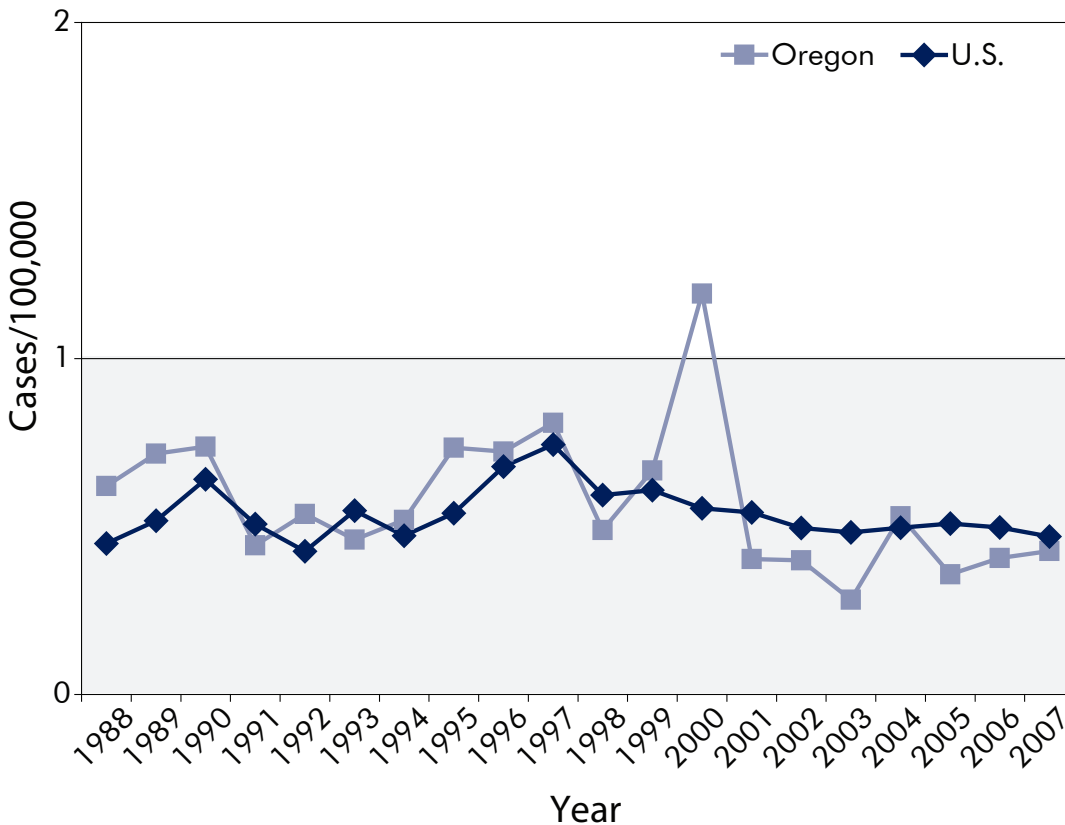
Malaria by year: Oregon, 1988–2007



Incidence of malaria by age and sex: Oregon, 1998–2007



Incidence of malaria: Oregon vs. nationwide, 1988–2007



Malaria cases by continent of acquisition: Oregon, 2007

