

2023 OREGON WIC DATA

BAKER COUNTY HEALTH DEPARTMENT

GROWING HEALTHY FUTURES

Participating in WIC supports the long-term health of women, infants, children and families. WIC is proven to support longer pregnancies and positive birth outcomes¹.

The American Academy of Pediatrics identifies three foundations of healthy child development:

- **Stable, Responsive Relationships**
- **Safe, Supportive Environments**
- **Appropriate Nutrition²**

WIC is the premier public health nutrition program and it supports all three of these developmental foundations.



¹ Fingar et al, *Journal of Maternal and Child Health*, 2017 ² American Academy of Pediatrics, *Policy statement*, 2012

WHO WE SERVED



495

Women, infants and children participated in WIC

43%

of all pregnant women served by WIC

273

WIC families served



75%

are working families

3 OUT OF 4



participants are infants and children under five

BREASTFEEDING

92%

of WIC moms start out breastfeeding

47%

of WIC moms breastfed exclusively for six months

2023 OREGON WIC DATA

BAKER COUNTY HEALTH DEPARTMENT

ECONOMIC BENEFITS OF WIC

3 LOCAL STORES ACCEPTING WIC:

- 1 Independent store
- 0 Local or regional chains
- 2 National chain stores
- 0 Pharmacies

\$221,029

Total WIC dollars spent
by participants
at local stores

ALL STORES THAT ACCEPT WIC MUST CARRY:

- At least 8 kinds of fresh fruits and vegetables
- Whole grain products
- Lowfat milk
- Lowfat yogurt
- Canned/dried beans



WIC FARM DIRECT NUTRITION PROGRAM

The Farm Direct Nutrition Program (FDNP) provides families with an additional source of nutritious food and education on selecting and preparing fresh produce.

7

PARTICIPATING FARMERS

at local farmers markets
and farm stands

\$3,688

FDNP dollars paid
to local farmers

WIC CLINIC SITES

Baker City

For more details about these numbers, please visit:

<https://www.oregon.gov/OHA/PH/HEALTHYPEOPLEFAMILIES/WIC/Pages/annual.aspx>

541-523-8212

www.bakercounty.org/health/wic.html

You can get this document in other languages, large print, braille, or a format you prefer. We accept all relay calls, or you can dial 711.

Revised 3/19/2024

2023 OREGON WIC DATA

BENTON COUNTY HEALTH DEPARTMENT

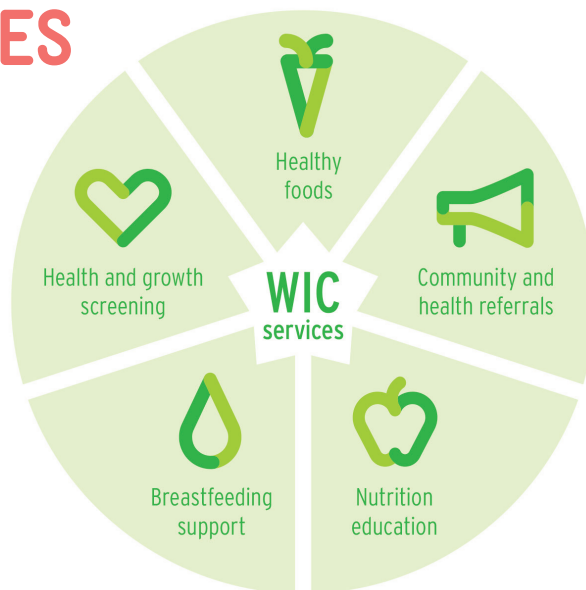
GROWING HEALTHY FUTURES

Participating in WIC supports the long-term health of women, infants, children and families. WIC is proven to support longer pregnancies and positive birth outcomes¹.

The American Academy of Pediatrics identifies three foundations of healthy child development:

- **Stable, Responsive Relationships**
- **Safe, Supportive Environments**
- **Appropriate Nutrition²**

WIC is the premier public health nutrition program and it supports all three of these developmental foundations.



¹ Fingar et al, *Journal of Maternal and Child Health*, 2017 ² American Academy of Pediatrics, *Policy statement*, 2012

WHO WE SERVED



1645

Women, infants and children participated in WIC

26%

of all pregnant women served by WIC

952

WIC families served



69%

are working families

3 OUT OF 4



participants are infants and children under five

BREASTFEEDING

95%

of WIC moms start out breastfeeding

52%

of WIC moms breastfed exclusively for six months

2023 OREGON WIC DATA

BENTON COUNTY HEALTH DEPARTMENT

ECONOMIC BENEFITS OF WIC

10 LOCAL STORES ACCEPTING WIC:

- 3 Independent stores
- 0 Local or regional chains
- 4 National chain stores
- 3 Pharmacies

\$813,488

Total WIC dollars spent
by participants
at local stores

ALL STORES THAT ACCEPT WIC MUST CARRY:

- At least 8 kinds of fresh fruits and vegetables
- Whole grain products
- Lowfat milk
- Lowfat yogurt
- Canned/dried beans



WIC FARM DIRECT NUTRITION PROGRAM

The Farm Direct Nutrition Program (FDNP) provides families with an additional source of nutritious food and education on selecting and preparing fresh produce.

32 PARTICIPATING FARMERS

at local farmers markets
and farm stands

\$11,136

FDNP dollars paid
to local farmers

WIC CLINIC SITES

Corvallis, Monroe

For more details about these numbers, please visit:

<https://www.oregon.gov/OHA/PH/HEALTHYPEOPLEFAMILIES/WIC/Pages/annual.aspx>

541-766-6835

<https://health.bentoncountyor.gov/wic/>

You can get this document in other languages, large print, braille, or a format you prefer. We accept all relay calls, or you can dial 711.

Revised 3/19/2024

2023 OREGON WIC DATA

CLACKAMAS COUNTY PUBLIC HEALTH

GROWING HEALTHY FUTURES

Participating in WIC supports the long-term health of women, infants, children and families. WIC is proven to support longer pregnancies and positive birth outcomes¹.

The American Academy of Pediatrics identifies three foundations of healthy child development:

- **Stable, Responsive Relationships**
- **Safe, Supportive Environments**
- **Appropriate Nutrition²**

WIC is the premier public health nutrition program and it supports all three of these developmental foundations.



¹ Fingar et al, *Journal of Maternal and Child Health*, 2017 ² American Academy of Pediatrics, *Policy statement*, 2012

WHO WE SERVED



5470

Women, infants and children participated in WIC

18%

of all pregnant women served by WIC

3133

WIC families served



67%

are working families

3 OUT OF 4



participants are infants and children under five

BREASTFEEDING

96%

of WIC moms start out breastfeeding

50%

of WIC moms breastfed exclusively for six months

2023 OREGON WIC DATA

CLACKAMAS COUNTY PUBLIC HEALTH

ECONOMIC BENEFITS OF WIC

45 LOCAL STORES ACCEPTING WIC:

- 6 Independent stores
- 5 Local or regional chains
- 19 National chain stores
- 15 Pharmacies

\$2,699,581

Total WIC dollars spent
by participants
at local stores

ALL STORES THAT ACCEPT WIC MUST CARRY:

- At least 8 kinds of fresh fruits and vegetables
- Whole grain products
- Lowfat milk
- Lowfat yogurt
- Canned/dried beans



WIC FARM DIRECT NUTRITION PROGRAM

The Farm Direct Nutrition Program (FDNP) provides families with an additional source of nutritious food and education on selecting and preparing fresh produce.

65 PARTICIPATING FARMERS

at local farmers markets
and farm stands

\$23,084

FDNP dollars paid
to local farmers

WIC CLINIC SITES

Canby, Milwaukie, Oregon City, Sandy

For more details about these numbers, please visit:

<https://www.oregon.gov/OHA/PH/HEALTHYPEOPLEFAMILIES/WIC/Pages/annual.aspx>

503-655-8476

www.clackamas.us/publichealth/wic.html

You can get this document in other languages, large print, braille, or a format you prefer. We accept all relay calls, or you can dial 711.

Revised 3/19/2024

2023 OREGON WIC DATA

CLATSOP COUNTY PUBLIC HEALTH

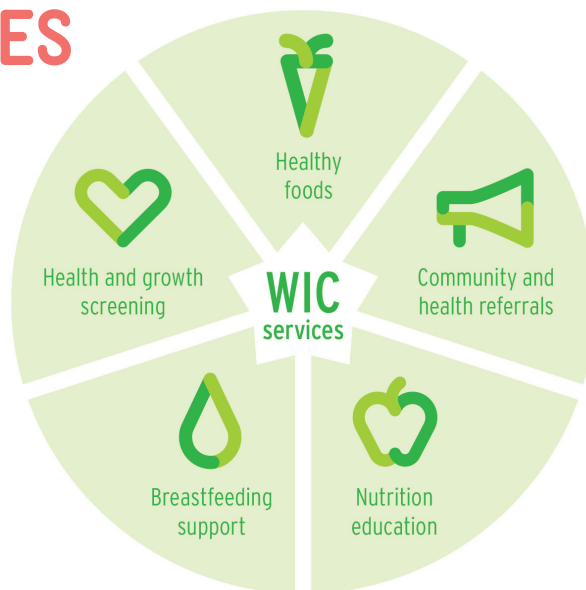
GROWING HEALTHY FUTURES

Participating in WIC supports the long-term health of women, infants, children and families. WIC is proven to support longer pregnancies and positive birth outcomes¹.

The American Academy of Pediatrics identifies three foundations of healthy child development:

- **Stable, Responsive Relationships**
- **Safe, Supportive Environments**
- **Appropriate Nutrition²**

WIC is the premier public health nutrition program and it supports all three of these developmental foundations.



¹ Fingar et al, *Journal of Maternal and Child Health*, 2017 ² American Academy of Pediatrics, *Policy statement*, 2012

WHO WE SERVED



980

Women, infants and children participated in WIC

33%

of all pregnant women served by WIC

602

WIC families served



75%

are working families

3 OUT OF 4



participants are infants and children under five

BREASTFEEDING

97%

of WIC moms start out breastfeeding

50%

of WIC moms breastfed exclusively for six months

2023 OREGON WIC DATA

CLATSOP COUNTY PUBLIC HEALTH

ECONOMIC BENEFITS OF WIC

8 LOCAL STORES ACCEPTING WIC:

- 4 Independent stores
- 0 Local or regional chains
- 2 National chain stores
- 2 Pharmacies

\$490,395

Total WIC dollars spent
by participants
at local stores

ALL STORES THAT ACCEPT WIC MUST CARRY:

- At least 8 kinds of fresh fruits and vegetables
- Whole grain products
- Lowfat milk
- Lowfat yogurt
- Canned/dried beans



WIC FARM DIRECT NUTRITION PROGRAM

The Farm Direct Nutrition Program (FDNP) provides families with an additional source of nutritious food and education on selecting and preparing fresh produce.

11 PARTICIPATING FARMERS

at local farmers markets
and farm stands

\$6,376

FDNP dollars paid
to local farmers

WIC CLINIC SITES

Astoria, Seaside

For more details about these numbers, please visit:

<https://www.oregon.gov/OHA/PH/HEALTHYPEOPLEFAMILIES/WIC/Pages/annual.aspx>

503-325-8500

www.co.clatsop.or.us/publichealth/page/wic-women-infants-and-children

You can get this document in other languages, large print, braille, or a format you prefer. We accept all relay calls, or you can dial 711.

Revised 3/19/2024

2023 OREGON WIC DATA

COLUMBIA HEALTH SERVICES (CHS)

GROWING HEALTHY FUTURES

Participating in WIC supports the long-term health of women, infants, children and families. WIC is proven to support longer pregnancies and positive birth outcomes¹.

The American Academy of Pediatrics identifies three foundations of healthy child development:

- **Stable, Responsive Relationships**
- **Safe, Supportive Environments**
- **Appropriate Nutrition²**

WIC is the premier public health nutrition program and it supports all three of these developmental foundations.



¹ Fingar et al, *Journal of Maternal and Child Health*, 2017 ² American Academy of Pediatrics, *Policy statement*, 2012

WHO WE SERVED



1580

Women, infants and children participated in WIC

30%

of all pregnant women served by WIC

903

WIC families served



56%

are working families

3 OUT OF 4



participants are infants and children under five

BREASTFEEDING

93%

of WIC moms start out breastfeeding

44%

of WIC moms breastfed exclusively for six months

2023 OREGON WIC DATA

COLUMBIA HEALTH SERVICES (CHS)

ECONOMIC BENEFITS OF WIC

6 LOCAL STORES ACCEPTING WIC:

- 3 Independent stores
- 0 Local or regional chains
- 2 National chain stores
- 1 Pharmacy

\$816,816

Total WIC dollars spent
by participants
at local stores

ALL STORES THAT ACCEPT WIC MUST CARRY:

- At least 8 kinds of fresh fruits and vegetables
- Whole grain products
- Lowfat milk
- Lowfat yogurt
- Canned/dried beans



WIC FARM DIRECT NUTRITION PROGRAM

The Farm Direct Nutrition Program (FDNP) provides families with an additional source of nutritious food and education on selecting and preparing fresh produce.

19 PARTICIPATING FARMERS

at local farmers markets
and farm stands

\$5,536

FDNP dollars paid
to local farmers

WIC CLINIC SITES

Clatskanie, Rainier, Scappoose, St. Helens, Vernonia

For more details about these numbers, please visit:

<https://www.oregon.gov/OHA/PH/HEALTHYPEOPLEFAMILIES/WIC/Pages/annual.aspx>

503-397-4651

www.columbia-health.org/wic.html

You can get this document in other languages, large print, braille, or a format you prefer. We accept all relay calls, or you can dial 711.

Revised 3/19/2024

2023 OREGON WIC DATA

COOS COUNTY HEALTH & WELLNESS

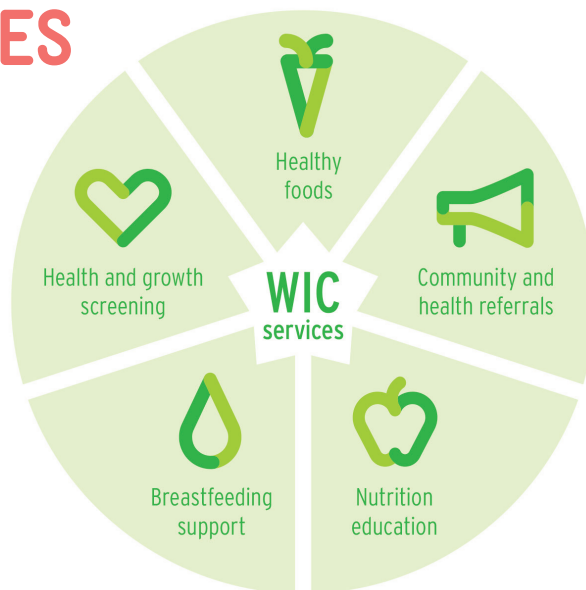
GROWING HEALTHY FUTURES

Participating in WIC supports the long-term health of women, infants, children and families. WIC is proven to support longer pregnancies and positive birth outcomes¹.

The American Academy of Pediatrics identifies three foundations of healthy child development:

- **Stable, Responsive Relationships**
- **Safe, Supportive Environments**
- **Appropriate Nutrition²**

WIC is the premier public health nutrition program and it supports all three of these developmental foundations.



¹ Fingar et al, Journal of Maternal and Child Health, 2017 ² American Academy of Pediatrics, Policy statement, 2012

WHO WE SERVED



1936

Women, infants and children participated in WIC

35%

of all pregnant women served by WIC

1110

WIC families served



69%

are working families

3 OUT OF 4



participants are infants and children under five

BREASTFEEDING

93%

of WIC moms start out breastfeeding

43%

of WIC moms breastfed exclusively for six months

2023 OREGON WIC DATA

COOS COUNTY HEALTH & WELLNESS

ECONOMIC BENEFITS OF WIC

14 LOCAL STORES ACCEPTING WIC:

- 7 Independent stores
- 0 Local or regional chains
- 3 National chain stores
- 2 Pharmacies

\$985,152

Total WIC dollars spent
by participants
at local stores

ALL STORES THAT ACCEPT WIC MUST CARRY:

- At least 8 kinds of fresh fruits and vegetables
- Whole grain products
- Lowfat milk
- Lowfat yogurt
- Canned/dried beans



WIC FARM DIRECT NUTRITION PROGRAM

The Farm Direct Nutrition Program (FDNP) provides families with an additional source of nutritious food and education on selecting and preparing fresh produce.

9

PARTICIPATING FARMERS

at local farmers markets
and farm stands

\$8,840

FDNP dollars paid
to local farmers

WIC CLINIC SITES

Bandon, Coos Bay, Coquille, Coquille Indian Tribe Center, Lakeside, Myrtle Point, Powers

For more details about these numbers, please visit:

<https://www.oregon.gov/OHA/PH/HEALTHYPEOPLEFAMILIES/WIC/Pages/annual.aspx>

541-266-6705

<https://cooshealthandwellness.org/public-health/clinical-services/women-infants-and-children/>

You can get this document in other languages, large print, braille, or a format you prefer. We accept all relay calls, or you can dial 711.

Revised 3/19/2024

2023 OREGON WIC DATA

CROOK COUNTY HEALTH DEPARTMENT

GROWING HEALTHY FUTURES

Participating in WIC supports the long-term health of women, infants, children and families. WIC is proven to support longer pregnancies and positive birth outcomes¹.

The American Academy of Pediatrics identifies three foundations of healthy child development:

- **Stable, Responsive Relationships**
- **Safe, Supportive Environments**
- **Appropriate Nutrition²**

WIC is the premier public health nutrition program and it supports all three of these developmental foundations.



¹ Fingar et al, *Journal of Maternal and Child Health*, 2017 ² American Academy of Pediatrics, *Policy statement*, 2012

WHO WE SERVED



1154

Women, infants and children participated in WIC

42%

of all pregnant women served by WIC

651

WIC families served



73%

are working families

3 OUT OF 4



participants are infants and children under five

BREASTFEEDING

100%

of WIC moms start out breastfeeding

37%

of WIC moms breastfed exclusively for six months

2023 OREGON WIC DATA

CROOK COUNTY HEALTH DEPARTMENT

ECONOMIC BENEFITS OF WIC

2 LOCAL STORES ACCEPTING WIC:

- 2 Independent stores
- 0 Local or regional chains
- 0 National chain stores
- 0 Pharmacies

\$638,462

Total WIC dollars spent
by participants
at local stores

ALL STORES THAT ACCEPT WIC MUST CARRY:

- At least 8 kinds of fresh fruits and vegetables
- Whole grain products
- Lowfat milk
- Lowfat yogurt
- Canned/dried beans



WIC FARM DIRECT NUTRITION PROGRAM

The Farm Direct Nutrition Program (FDNP) provides families with an additional source of nutritious food and education on selecting and preparing fresh produce.

3

PARTICIPATING FARMERS

at local farmers markets
and farm stands

\$8,260

FDNP dollars paid
to local farmers

WIC CLINIC SITES

Mitchell, Prineville

For more details about these numbers, please visit:

<https://www.oregon.gov/OHA/PH/HEALTHYPEOPLEFAMILIES/WIC/Pages/annual.aspx>

541-447-5165

www.co.crook.or.us/Departments/Health/WIC/tabid/152/Default.aspx

You can get this document in other languages, large print, braille, or a format you prefer. We accept all relay calls, or you can dial 711.

Revised 3/19/2024

2023 OREGON WIC DATA

DESCHUTES COUNTY HEALTH SERVICES

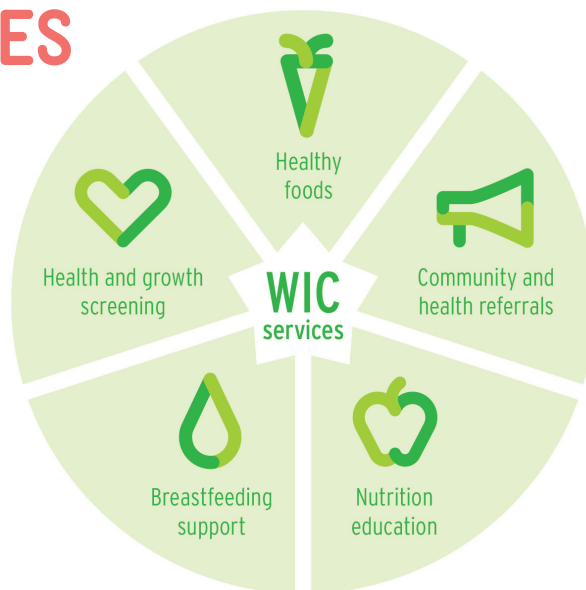
GROWING HEALTHY FUTURES

Participating in WIC supports the long-term health of women, infants, children and families. WIC is proven to support longer pregnancies and positive birth outcomes¹.

The American Academy of Pediatrics identifies three foundations of healthy child development:

- **Stable, Responsive Relationships**
- **Safe, Supportive Environments**
- **Appropriate Nutrition²**

WIC is the premier public health nutrition program and it supports all three of these developmental foundations.



¹ Fingar et al, *Journal of Maternal and Child Health*, 2017 ² American Academy of Pediatrics, *Policy statement*, 2012

WHO WE SERVED



4774

Women, infants and children participated in WIC

28%

of all pregnant women served by WIC

2746

WIC families served



77%

are working families

3 OUT OF 4



participants are infants and children under five

BREASTFEEDING

94%

of WIC moms start out breastfeeding

49%

of WIC moms breastfed exclusively for six months

2023 OREGON WIC DATA

DESCHUTES COUNTY HEALTH SERVICES

ECONOMIC BENEFITS OF WIC

24 LOCAL STORES ACCEPTING WIC:

- 6 Independent stores
- 2 Local or regional chains
- 7 National chain stores
- 6 Pharmacies

\$2,371,469

Total WIC dollars spent
by participants
at local stores

ALL STORES THAT ACCEPT WIC MUST CARRY:

- At least 8 kinds of fresh fruits and vegetables
- Whole grain products
- Lowfat milk
- Lowfat yogurt
- Canned/dried beans



WIC FARM DIRECT NUTRITION PROGRAM

The Farm Direct Nutrition Program (FDNP) provides families with an additional source of nutritious food and education on selecting and preparing fresh produce.

27

**PARTICIPATING
FARMERS**

at local farmers markets
and farm stands

\$33,672

FDNP dollars paid
to local farmers

WIC CLINIC SITES

Bend, La Pine, Redmond

For more details about these numbers, please visit:

<https://www.oregon.gov/OHA/PH/HEALTHYPEOPLEFAMILIES/WIC/Pages/annual.aspx>

541-322-7400

www.deschutes.org/health/page/women-infants-and-children-wic

You can get this document in other languages, large print, braille, or a format you prefer. We accept all relay calls, or you can dial 711.

Revised 3/19/2024

2023 OREGON WIC DATA

DOUGLAS COUNTY WIC, A PROGRAM OF UCAN

GROWING HEALTHY FUTURES

Participating in WIC supports the long-term health of women, infants, children and families. WIC is proven to support longer pregnancies and positive birth outcomes¹.

The American Academy of Pediatrics identifies three foundations of healthy child development:

- **Stable, Responsive Relationships**
- **Safe, Supportive Environments**
- **Appropriate Nutrition²**

WIC is the premier public health nutrition program and it supports all three of these developmental foundations.



¹ Fingar et al, *Journal of Maternal and Child Health*, 2017 ² American Academy of Pediatrics, *Policy statement*, 2012

WHO WE SERVED



4224

Women, infants and children participated in WIC

43%

of all pregnant women served by WIC

2378

WIC families served



71%

are working families

3 OUT OF 4



participants are infants and children under five

BREASTFEEDING

100%

of WIC moms start out breastfeeding

49%

of WIC moms breastfed exclusively for six months

2023 OREGON WIC DATA

DOUGLAS COUNTY WIC, A PROGRAM OF UCAN

ECONOMIC BENEFITS OF WIC

16 LOCAL STORES ACCEPTING WIC:

- 7 Independent stores
- 1 Local or regional chain
- 3 National chain stores
- 2 Pharmacies

\$2,188,622

Total WIC dollars spent
by participants
at local stores

ALL STORES THAT ACCEPT WIC MUST CARRY:

- At least 8 kinds of fresh fruits and vegetables
- Whole grain products
- Lowfat milk
- Lowfat yogurt
- Canned/dried beans



WIC FARM DIRECT NUTRITION PROGRAM

The Farm Direct Nutrition Program (FDNP) provides families with an additional source of nutritious food and education on selecting and preparing fresh produce.

29 PARTICIPATING FARMERS

at local farmers markets
and farm stands

\$28,688

FDNP dollars paid
to local farmers

WIC CLINIC SITES

Canyonville, Drain, Glendale, Glide, Myrtle Creek, Reedsport, Roseburg, Sutherlin

For more details about these numbers, please visit:

<https://www.oregon.gov/OHA/PH/HEALTHYPEOPLEFAMILIES/WIC/Pages/annual.aspx>

541-440-3516

www.ucancap.org/need-help/getting-wic-services/

You can get this document in other languages, large print, braille, or a format you prefer. We accept all relay calls, or you can dial 711.

Revised 3/19/2024

2023 OREGON WIC DATA

GILLIAM COUNTY HEALTH DEPARTMENT

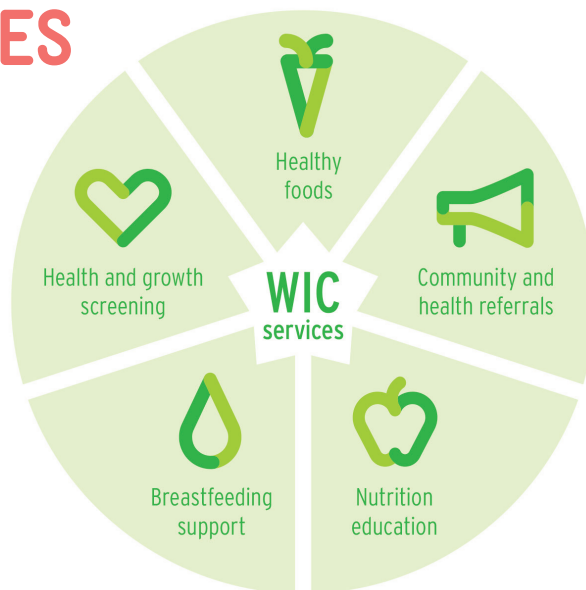
GROWING HEALTHY FUTURES

Participating in WIC supports the long-term health of women, infants, children and families. WIC is proven to support longer pregnancies and positive birth outcomes¹.

The American Academy of Pediatrics identifies three foundations of healthy child development:

- **Stable, Responsive Relationships**
- **Safe, Supportive Environments**
- **Appropriate Nutrition²**

WIC is the premier public health nutrition program and it supports all three of these developmental foundations.



¹ Fingar et al, *Journal of Maternal and Child Health*, 2017 ² American Academy of Pediatrics, *Policy statement*, 2012

WHO WE SERVED



41

Women, infants and children participated in WIC

60%

of all pregnant women served by WIC

21

WIC families served



79%

are working families

3 OUT OF 4



participants are infants and children under five

BREASTFEEDING

94%

of WIC moms in Oregon start out breastfeeding

32%

of WIC moms in Oregon breastfed exclusively for six months

2023 OREGON WIC DATA

GILLIAM COUNTY HEALTH DEPARTMENT

ECONOMIC BENEFITS OF WIC

1 LOCAL STORE ACCEPTING WIC:

- 1 Independent store
- 0 Local or regional chains
- 0 National chain stores
- 0 Pharmacies

\$6,988

Total WIC dollars spent
by participants
at local stores

ALL STORES THAT ACCEPT WIC MUST CARRY:

- At least 8 kinds of fresh fruits and vegetables
- Whole grain products
- Lowfat milk
- Lowfat yogurt
- Canned/dried beans



WIC FARM DIRECT NUTRITION PROGRAM

The Farm Direct Nutrition Program (FDNP) provides families with an additional source of nutritious food and education on selecting and preparing fresh produce.

0

PARTICIPATING FARMERS

at local farmers markets
and farm stands

\$128

FDNP dollars paid
to local farmers

WIC CLINIC SITES

Condon, Arlington

For more details about these numbers, please visit:

<https://www.oregon.gov/OHA/PH/HEALTHYPEOPLEFAMILIES/WIC/Pages/annual.aspx>

541-384-2418

<https://gilliamcountypublichealth.org/wic/>

You can get this document in other languages, large print, braille, or a format you prefer. We accept all relay calls, or you can dial 711.

Revised 3/19/2024

2023 OREGON WIC DATA

GRANT COUNTY HEALTH DEPARTMENT

GROWING HEALTHY FUTURES

Participating in WIC supports the long-term health of women, infants, children and families. WIC is proven to support longer pregnancies and positive birth outcomes¹.

The American Academy of Pediatrics identifies three foundations of healthy child development:

- **Stable, Responsive Relationships**
- **Safe, Supportive Environments**
- **Appropriate Nutrition²**

WIC is the premier public health nutrition program and it supports all three of these developmental foundations.



¹ Fingar et al, *Journal of Maternal and Child Health*, 2017 ² American Academy of Pediatrics, *Policy statement*, 2012

WHO WE SERVED



183

Women, infants and children participated in WIC

29%

of all pregnant women served by WIC

100

WIC families served



63%

are working families

3 OUT OF 4



participants are infants and children under five

BREASTFEEDING

100%

of WIC moms start out breastfeeding

46%

of WIC moms breastfed exclusively for six months

2023 OREGON WIC DATA

GRANT COUNTY HEALTH DEPARTMENT

ECONOMIC BENEFITS OF WIC

2 LOCAL STORES ACCEPTING WIC:

- 1 Independent stores
- 1 Local or regional chain
- 0 National chain stores
- 0 Pharmacies

\$96,005

Total WIC dollars spent
by participants
at local stores

ALL STORES THAT ACCEPT WIC MUST CARRY:

- At least 8 kinds of fresh fruits and vegetables
- Whole grain products
- Lowfat milk
- Lowfat yogurt
- Canned/dried beans



WIC FARM DIRECT NUTRITION PROGRAM

The Farm Direct Nutrition Program (FDNP) provides families with an additional source of nutritious food and education on selecting and preparing fresh produce.

1

**PARTICIPATING
FARMERS**

at local farmers markets
and farm stands

\$1,540

FDNP dollars paid
to local farmers

WIC CLINIC SITES

John Day

For more details about these numbers, please visit:

<https://www.oregon.gov/OHA/PH/HEALTHYPEOPLEFAMILIES/WIC/Pages/annual.aspx>

541-575-0429

www.granthealth.org

You can get this document in other languages, large print, braille, or a format you prefer. We accept all relay calls, or you can dial 711.

Revised 3/19/2024

2023 OREGON WIC DATA

HARNEY COUNTY HEALTH DEPARTMENT

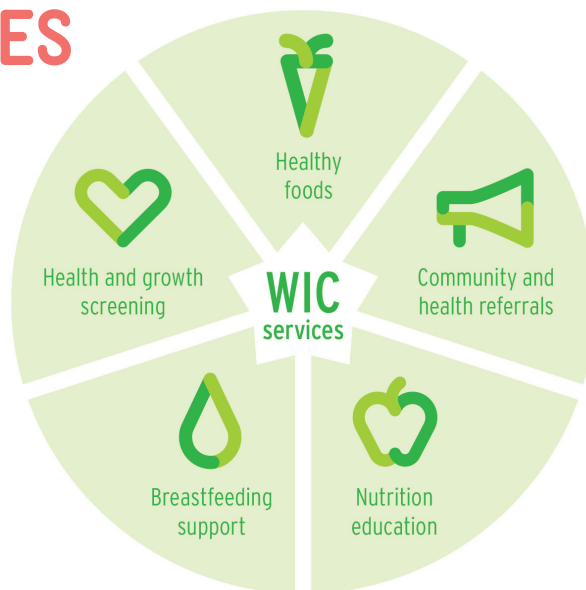
GROWING HEALTHY FUTURES

Participating in WIC supports the long-term health of women, infants, children and families. WIC is proven to support longer pregnancies and positive birth outcomes¹.

The American Academy of Pediatrics identifies three foundations of healthy child development:

- **Stable, Responsive Relationships**
- **Safe, Supportive Environments**
- **Appropriate Nutrition²**

WIC is the premier public health nutrition program and it supports all three of these developmental foundations.



¹ Fingar et al, *Journal of Maternal and Child Health*, 2017 ² American Academy of Pediatrics, *Policy statement*, 2012

WHO WE SERVED



296

Women, infants and children participated in WIC

36%

of all pregnant women served by WIC

173

WIC families served



71%

are working families

3 OUT OF 4



participants are infants and children under five

BREASTFEEDING

94%

of WIC moms start out breastfeeding

35%

of WIC moms breastfed exclusively for six months

2023 OREGON WIC DATA

HARNEY COUNTY HEALTH DEPARTMENT

ECONOMIC BENEFITS OF WIC

2 LOCAL STORES ACCEPTING WIC:

- 1 Independent store
- 0 Local or regional chains
- 1 National chain store
- 0 Pharmacies

\$133,991

Total WIC dollars spent
by participants
at local stores

ALL STORES THAT ACCEPT WIC MUST CARRY:

- At least 8 kinds of fresh fruits and vegetables
- Whole grain products
- Lowfat milk
- Lowfat yogurt
- Canned/dried beans



WIC FARM DIRECT NUTRITION PROGRAM

The Farm Direct Nutrition Program (FDNP) provides families with an additional source of nutritious food and education on selecting and preparing fresh produce.

7

PARTICIPATING FARMERS

at local farmers markets
and farm stands

\$1,032

FDNP dollars paid
to local farmers

WIC CLINIC SITES

Burns, Burns-Paiute Waditika Tribal Health Center

For more details about these numbers, please visit:

<https://www.oregon.gov/OHA/PH/HEALTHYPEOPLEFAMILIES/WIC/Pages/annual.aspx>

541-573-2271

<https://harneycountyor.gov/women-infants-children-wic/>

You can get this document in other languages, large print, braille, or a format you prefer. We accept all relay calls, or you can dial 711.

Revised 3/19/2024

2023 OREGON WIC DATA

HOOD RIVER COUNTY HEALTH DEPARTMENT

GROWING HEALTHY FUTURES

Participating in WIC supports the long-term health of women, infants, children and families. WIC is proven to support longer pregnancies and positive birth outcomes¹.

The American Academy of Pediatrics identifies three foundations of healthy child development:

- **Stable, Responsive Relationships**
- **Safe, Supportive Environments**
- **Appropriate Nutrition²**

WIC is the premier public health nutrition program and it supports all three of these developmental foundations.



¹ Fingar et al, *Journal of Maternal and Child Health*, 2017 ² American Academy of Pediatrics, *Policy statement*, 2012

WHO WE SERVED



821

Women, infants and children participated in WIC

38%

of all pregnant women served by WIC

510

WIC families served



81%

are working families

3 OUT OF 4



participants are infants and children under five

BREASTFEEDING

100%

of WIC moms start out breastfeeding

62%

of WIC moms breastfed exclusively for six months

2023 OREGON WIC DATA

HOOD RIVER COUNTY HEALTH DEPARTMENT

ECONOMIC BENEFITS OF WIC

5 LOCAL STORES ACCEPTING WIC:

- 3 Independent stores
- 1 Local or regional chain
- 1 National chain store
- 0 Pharmacies

\$443,531

Total WIC dollars spent
by participants
at local stores

ALL STORES THAT ACCEPT WIC MUST CARRY:

- At least 8 kinds of fresh fruits and vegetables
- Whole grain products
- Lowfat milk
- Lowfat yogurt
- Canned/dried beans



WIC FARM DIRECT NUTRITION PROGRAM

The Farm Direct Nutrition Program (FDNP) provides families with an additional source of nutritious food and education on selecting and preparing fresh produce.

26

PARTICIPATING FARMERS

at local farmers markets
and farm stands

\$3,928

FDNP dollars paid
to local farmers

WIC CLINIC SITES

Cascade Locks, Hood River, Parkdale

For more details about these numbers, please visit:

<https://www.oregon.gov/OHA/PH/HEALTHYPEOPLEFAMILIES/WIC/Pages/annual.aspx>

541-387-6882

www.co.hood-river.or.us/index.asp?Type=B_BASIC&SEC={88E4CED7-3C8F-4074-9C7A-075198E38804}

You can get this document in other languages, large print, braille, or a format you prefer. We accept all relay calls, or you can dial 711.

Revised 3/19/2024

2023 OREGON WIC DATA

JACKSON COUNTY HEALTH AND HUMAN SERVICES

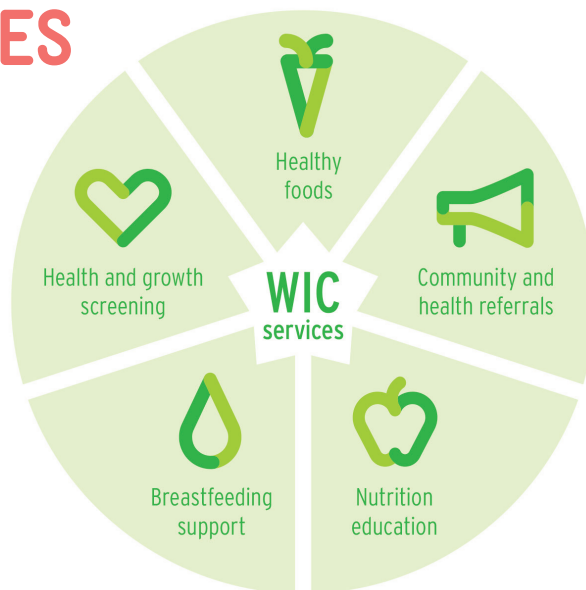
GROWING HEALTHY FUTURES

Participating in WIC supports the long-term health of women, infants, children and families. WIC is proven to support longer pregnancies and positive birth outcomes¹.

The American Academy of Pediatrics identifies three foundations of healthy child development:

- **Stable, Responsive Relationships**
- **Safe, Supportive Environments**
- **Appropriate Nutrition²**

WIC is the premier public health nutrition program and it supports all three of these developmental foundations.



¹ Fingar et al, *Journal of Maternal and Child Health*, 2017 ² American Academy of Pediatrics, *Policy statement*, 2012

WHO WE SERVED



7199

Women, infants and children participated in WIC

37%

of all pregnant women served by WIC

4194

WIC families served



77%

are working families

3 OUT OF 4



participants are infants and children under five

BREASTFEEDING

98%

of WIC moms start out breastfeeding

49%

of WIC moms breastfed exclusively for six months

2023 OREGON WIC DATA

JACKSON COUNTY HEALTH AND HUMAN SERVICES

ECONOMIC BENEFITS OF WIC

30 LOCAL STORES ACCEPTING WIC:

- 8 Independent stores
- 3 Local or regional chains
- 9 National chain stores
- 7 Pharmacies

\$3,675,693

Total WIC dollars spent
by participants
at local stores

ALL STORES THAT ACCEPT WIC MUST CARRY:

- At least 8 kinds of fresh fruits and vegetables
- Whole grain products
- Lowfat milk
- Lowfat yogurt
- Canned/dried beans



WIC FARM DIRECT NUTRITION PROGRAM

The Farm Direct Nutrition Program (FDNP) provides families with an additional source of nutritious food and education on selecting and preparing fresh produce.

36 PARTICIPATING FARMERS

at local farmers markets
and farm stands

\$34,360

FDNP dollars paid
to local farmers

WIC CLINIC SITES

Ashland, Medford, White City

For more details about these numbers, please visit:

<https://www.oregon.gov/OHA/PH/HEALTHYPEOPLEFAMILIES/WIC/Pages/annual.aspx>

541-774-8203

https://www.jacksoncountyor.gov/departments/health_human_services/programs_and_services/public_health/wic/index.php

You can get this document in other languages, large print, braille, or a format you prefer. We accept all relay calls, or you can dial 711.

Revised 3/19/2024

2023 OREGON WIC DATA

JEFFERSON COUNTY PUBLIC HEALTH

GROWING HEALTHY FUTURES

Participating in WIC supports the long-term health of women, infants, children and families. WIC is proven to support longer pregnancies and positive birth outcomes¹.

The American Academy of Pediatrics identifies three foundations of healthy child development:

- **Stable, Responsive Relationships**
- **Safe, Supportive Environments**
- **Appropriate Nutrition²**

WIC is the premier public health nutrition program and it supports all three of these developmental foundations.



¹ Fingar et al, *Journal of Maternal and Child Health*, 2017 ² American Academy of Pediatrics, *Policy statement*, 2012

WHO WE SERVED



968

Women, infants and children participated in WIC

57%

of all pregnant women served by WIC

518

WIC families served



71%

are working families

3 OUT OF 4



participants are infants and children under five

BREASTFEEDING

98%

of WIC moms start out breastfeeding

47%

of WIC moms breastfed exclusively for six months

2023 OREGON WIC DATA

JEFFERSON COUNTY PUBLIC HEALTH

ECONOMIC BENEFITS OF WIC

4 LOCAL STORES ACCEPTING WIC:

- 2 Independent stores
- 1 Local or regional chain
- 1 National chain store
- 0 Pharmacies

\$513,831

Total WIC dollars spent
by participants
at local stores

ALL STORES THAT ACCEPT WIC MUST CARRY:

- At least 8 kinds of fresh fruits and vegetables
- Whole grain products
- Lowfat milk
- Lowfat yogurt
- Canned/dried beans



WIC FARM DIRECT NUTRITION PROGRAM

The Farm Direct Nutrition Program (FDNP) provides families with an additional source of nutritious food and education on selecting and preparing fresh produce.

6

PARTICIPATING FARMERS

at local farmers markets
and farm stands

\$5,112

FDNP dollars paid
to local farmers

WIC CLINIC SITES

Madras

For more details about these numbers, please visit:

<https://www.oregon.gov/OHA/PH/HEALTHYPEOPLEFAMILIES/WIC/Pages/annual.aspx>

541-475-4456

<https://www.jeffco.net/publichealth/page/wic>

You can get this document in other languages, large print, braille, or a format you prefer. We accept all relay calls, or you can dial 711.

Revised 3/19/2024

2023 OREGON WIC DATA

JOSEPHINE COUNTY HEALTH DEPARTMENT

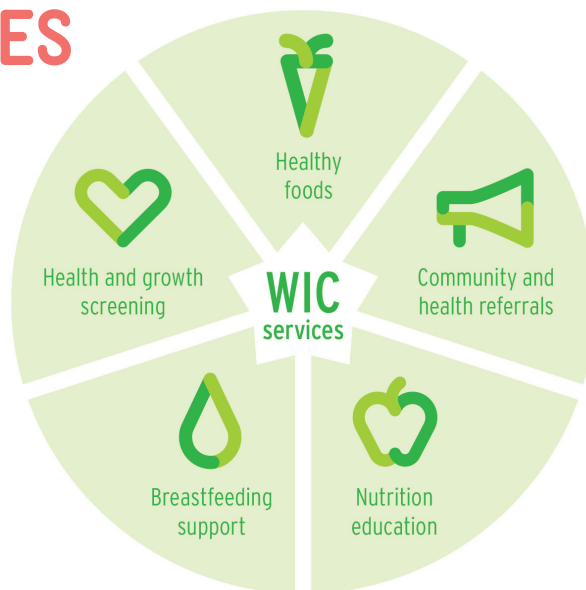
GROWING HEALTHY FUTURES

Participating in WIC supports the long-term health of women, infants, children and families. WIC is proven to support longer pregnancies and positive birth outcomes¹.

The American Academy of Pediatrics identifies three foundations of healthy child development:

- **Stable, Responsive Relationships**
- **Safe, Supportive Environments**
- **Appropriate Nutrition²**

WIC is the premier public health nutrition program and it supports all three of these developmental foundations.



¹ Fingar et al, *Journal of Maternal and Child Health*, 2017 ² American Academy of Pediatrics, *Policy statement*, 2012

WHO WE SERVED



3719

Women, infants and children participated in WIC

39%

of all pregnant women served by WIC

2100

WIC families served



70%

are working families

3 OUT OF 4



participants are infants and children under five

BREASTFEEDING

96%

of WIC moms start out breastfeeding

54%

of WIC moms breastfed exclusively for six months

2023 OREGON WIC DATA

JOSEPHINE COUNTY HEALTH DEPARTMENT

ECONOMIC BENEFITS OF WIC

11 LOCAL STORES ACCEPTING WIC:

- 4 Independent stores
- 0 Local or regional chains
- 3 National chain stores
- 3 Pharmacies

\$1,871,987

Total WIC dollars spent
by participants
at local stores

ALL STORES THAT ACCEPT WIC MUST CARRY:

- At least 8 kinds of fresh fruits and vegetables
- Whole grain products
- Lowfat milk
- Lowfat yogurt
- Canned/dried beans



WIC FARM DIRECT NUTRITION PROGRAM

The Farm Direct Nutrition Program (FDNP) provides families with an additional source of nutritious food and education on selecting and preparing fresh produce.

32 PARTICIPATING FARMERS

at local farmers markets
and farm stands

\$23,332

FDNP dollars paid
to local farmers

WIC CLINIC SITES

Brookings, Cave Junction, Gold Beach, Grants Pass, Port Orford,
WIC Mobile Unit

For more details about these numbers, please visit:

<https://www.oregon.gov/OHA/PH/HEALTHYPEOPLEFAMILIES/WIC/Pages/annual.aspx>

Phone:541-474-5333 Text:541-295-5506

www.co.josephine.or.us/Page.asp?NavID=255

You can get this document in other languages, large print, braille, or a format you prefer. We accept all relay calls, or you can dial 711.

Revised 3/19/2024

2023 OREGON WIC DATA

KLAMATH COUNTY PUBLIC HEALTH

GROWING HEALTHY FUTURES

Participating in WIC supports the long-term health of women, infants, children and families. WIC is proven to support longer pregnancies and positive birth outcomes¹.

The American Academy of Pediatrics identifies three foundations of healthy child development:

- **Stable, Responsive Relationships**
- **Safe, Supportive Environments**
- **Appropriate Nutrition²**

WIC is the premier public health nutrition program and it supports all three of these developmental foundations.



¹ Fingar et al, *Journal of Maternal and Child Health*, 2017 ² American Academy of Pediatrics, *Policy statement*, 2012

WHO WE SERVED



2942

Women, infants and children participated in WIC

45%

of all pregnant women served by WIC

1723

WIC families served



67%

are working families

3 OUT OF 4



participants are infants and children under five

BREASTFEEDING

95%

of WIC moms start out breastfeeding

35%

of WIC moms breastfed exclusively for six months

2023 OREGON WIC DATA

KLAMATH COUNTY PUBLIC HEALTH

ECONOMIC BENEFITS OF WIC

10 LOCAL STORES ACCEPTING WIC:

- 6 Independent stores
- 1 Local or regional chain
- 1 National chain store
- 2 Pharmacies

\$1,589,715

Total WIC dollars spent
by participants
at local stores

ALL STORES THAT ACCEPT WIC MUST CARRY:

- At least 8 kinds of fresh fruits and vegetables
- Whole grain products
- Lowfat milk
- Lowfat yogurt
- Canned/dried beans



WIC FARM DIRECT NUTRITION PROGRAM

The Farm Direct Nutrition Program (FDNP) provides families with an additional source of nutritious food and education on selecting and preparing fresh produce.

27

PARTICIPATING FARMERS

at local farmers markets
and farm stands

\$10,292

FDNP dollars paid
to local farmers

WIC CLINIC SITES

Chiloquin, Klamath Falls, Malin, Merrill

For more details about these numbers, please visit:

<https://www.oregon.gov/OHA/PH/HEALTHYPEOPLEFAMILIES/WIC/Pages/annual.aspx>

541-883-4276

<https://www.klamathcounty.org/418/Women-Infants-Children-WIC>

You can get this document in other languages, large print, braille, or a format you prefer. We accept all relay calls, or you can dial 711.

Revised 3/19/2024

2023 OREGON WIC DATA

LAKE COUNTY PUBLIC HEALTH

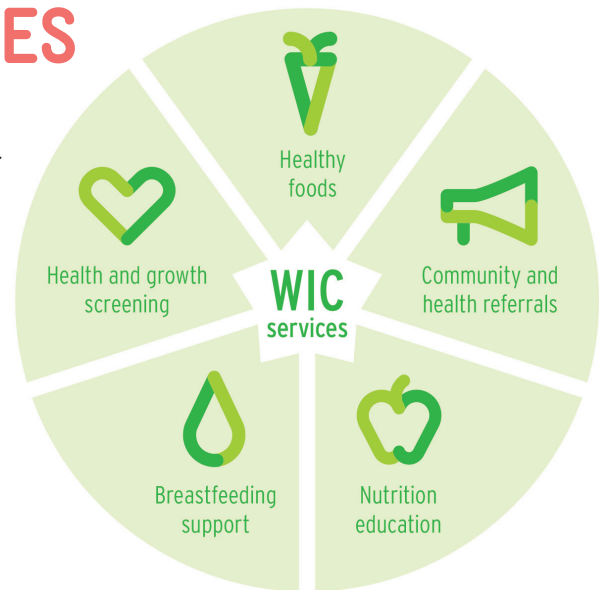
GROWING HEALTHY FUTURES

Participating in WIC supports the long-term health of women, infants, children and families. WIC is proven to support longer pregnancies and positive birth outcomes¹.

The American Academy of Pediatrics identifies three foundations of healthy child development:

- **Stable, Responsive Relationships**
- **Safe, Supportive Environments**
- **Appropriate Nutrition²**

WIC is the premier public health nutrition program and it supports all three of these developmental foundations.



¹ Fingar et al, *Journal of Maternal and Child Health*, 2017 ² American Academy of Pediatrics, *Policy statement*, 2012

WHO WE SERVED



199

Women, infants and children participated in WIC

38%

of all pregnant women served by WIC

102

WIC families served



61%

are working families

3 OUT OF 4



participants are infants and children under five

BREASTFEEDING

95%

of WIC moms start out breastfeeding

35%

of WIC moms breastfed exclusively for six months

2023 OREGON WIC DATA

LAKE COUNTY PUBLIC HEALTH

ECONOMIC BENEFITS OF WIC

3 LOCAL STORES ACCEPTING WIC:

- 2 Independent stores
- 0 Local or regional chains
- 1 National chain store
- 0 Pharmacies

\$109,265

Total WIC dollars spent
by participants
at local stores

ALL STORES THAT ACCEPT WIC MUST CARRY:

- At least 8 kinds of fresh fruits and vegetables
- Whole grain products
- Lowfat milk
- Lowfat yogurt
- Canned/dried beans



WIC FARM DIRECT NUTRITION PROGRAM

The Farm Direct Nutrition Program (FDNP) provides families with an additional source of nutritious food and education on selecting and preparing fresh produce.

3 PARTICIPATING FARMERS

at local farmers markets
and farm stands

\$1,444

FDNP dollars paid
to local farmers

WIC CLINIC SITES

Christmas Valley, Lakeview

For more details about these numbers, please visit:

<https://www.oregon.gov/OHA/PH/HEALTHYPEOPLEFAMILIES/WIC/Pages/annual.aspx>

541-947-6045

https://www.wicprograms.org/li/lake_county_wic_clinic_97630

You can get this document in other languages, large print, braille, or a format you prefer. We accept all relay calls, or you can dial 711.

Revised 3/19/2024

2023 OREGON WIC DATA

LANE COUNTY HEALTH AND HUMAN SERVICES

GROWING HEALTHY FUTURES

Participating in WIC supports the long-term health of women, infants, children and families. WIC is proven to support longer pregnancies and positive birth outcomes¹.

The American Academy of Pediatrics identifies three foundations of healthy child development:

- **Stable, Responsive Relationships**
- **Safe, Supportive Environments**
- **Appropriate Nutrition²**

WIC is the premier public health nutrition program and it supports all three of these developmental foundations.



¹ Fingar et al, *Journal of Maternal and Child Health*, 2017 ² American Academy of Pediatrics, *Policy statement*, 2012

WHO WE SERVED



9225

Women, infants and children participated in WIC

29%

of all pregnant women served by WIC

5369

WIC families served



72%

are working families

3 OUT OF 4



participants are infants and children under five

BREASTFEEDING

95%

of WIC moms start out breastfeeding

45%

of WIC moms breastfed exclusively for six months

2023 OREGON WIC DATA

LANE COUNTY HEALTH AND HUMAN SERVICES

ECONOMIC BENEFITS OF WIC

42 LOCAL STORES ACCEPTING WIC:

- 4 Independent stores
- 0 Local or regional chains
- 18 National chain stores
- 13 Pharmacies

\$4,719,247

Total WIC dollars spent
by participants
at local stores

ALL STORES THAT ACCEPT WIC MUST CARRY:

- At least 8 kinds of fresh fruits and vegetables
- Whole grain products
- Lowfat milk
- Lowfat yogurt
- Canned/dried beans



WIC FARM DIRECT NUTRITION PROGRAM

The Farm Direct Nutrition Program (FDNP) provides families with an additional source of nutritious food and education on selecting and preparing fresh produce.

69 PARTICIPATING FARMERS

at local farmers markets
and farm stands

\$56,316

FDNP dollars paid
to local farmers

WIC CLINIC SITES

Cottage Grove, Eugene, Florence, Oakridge, Springfield

For more details about these numbers, please visit:

<https://www.oregon.gov/OHA/PH/HEALTHYPEOPLEFAMILIES/WIC/Pages/annual.aspx>

541-682-4202

https://lanecounty.org/government/county_departments/health_and_human_services/public_health/women_infants_children_w_i_c_program

You can get this document in other languages, large print, braille, or a format you prefer. We accept all relay calls, or you can dial 711.

Revised 3/19/2024

2023 OREGON WIC DATA

LINCOLN COUNTY HEALTH & HUMAN SERVICES

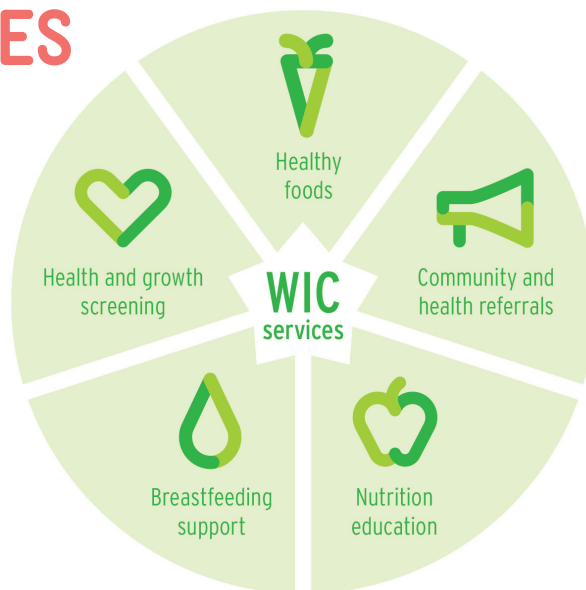
GROWING HEALTHY FUTURES

Participating in WIC supports the long-term health of women, infants, children and families. WIC is proven to support longer pregnancies and positive birth outcomes¹.

The American Academy of Pediatrics identifies three foundations of healthy child development:

- **Stable, Responsive Relationships**
- **Safe, Supportive Environments**
- **Appropriate Nutrition²**

WIC is the premier public health nutrition program and it supports all three of these developmental foundations.



¹ Fingar et al, *Journal of Maternal and Child Health*, 2017 ² American Academy of Pediatrics, *Policy statement*, 2012

WHO WE SERVED



1513

Women, infants and children participated in WIC

49%

of all pregnant women served by WIC

881

WIC families served



71%

are working families

3 OUT OF 4



participants are infants and children under five

BREASTFEEDING

94%

of WIC moms start out breastfeeding

44%

of WIC moms breastfed exclusively for six months

2023 OREGON WIC DATA

LINCOLN COUNTY HEALTH & HUMAN SERVICES

ECONOMIC BENEFITS OF WIC

15 LOCAL STORES ACCEPTING WIC:

- 8 Independent stores
- 1 Local or regional chain
- 2 National chain stores
- 2 Pharmacies

\$768,953

Total WIC dollars spent
by participants
at local stores

ALL STORES THAT ACCEPT WIC MUST CARRY:

- At least 8 kinds of fresh fruits and vegetables
- Whole grain products
- Lowfat milk
- Lowfat yogurt
- Canned/dried beans



WIC FARM DIRECT NUTRITION PROGRAM

The Farm Direct Nutrition Program (FDNP) provides families with an additional source of nutritious food and education on selecting and preparing fresh produce.

5

PARTICIPATING FARMERS

at local farmers markets
and farm stands

\$7,832

FDNP dollars paid
to local farmers

WIC CLINIC SITES

Lincoln City, Newport, Siletz, Waldport

For more details about these numbers, please visit:

<https://www.oregon.gov/OHA/PH/HEALTHYPEOPLEFAMILIES/WIC/Pages/annual.aspx>

541-265-4163

<https://www.co.lincoln.or.us/682/Women-Infants-Children-WIC>

You can get this document in other languages, large print, braille, or a format you prefer. We accept all relay calls, or you can dial 711.

Revised 3/19/2024

2023 OREGON WIC DATA

LINN COUNTY HEALTH DEPARTMENT

GROWING HEALTHY FUTURES

Participating in WIC supports the long-term health of women, infants, children and families. WIC is proven to support longer pregnancies and positive birth outcomes¹.

The American Academy of Pediatrics identifies three foundations of healthy child development:

- **Stable, Responsive Relationships**
- **Safe, Supportive Environments**
- **Appropriate Nutrition²**

WIC is the premier public health nutrition program and it supports all three of these developmental foundations.



¹ Fingar et al, *Journal of Maternal and Child Health*, 2017 ² American Academy of Pediatrics, *Policy statement*, 2012

WHO WE SERVED



4407

Women, infants and children participated in WIC

32%

of all pregnant women served by WIC

2432

WIC families served



70%

are working families

3 OUT OF 4



participants are infants and children under five

BREASTFEEDING

97%

of WIC moms start out breastfeeding

47%

of WIC moms breastfed exclusively for six months

2023 OREGON WIC DATA

LINN COUNTY HEALTH DEPARTMENT

ECONOMIC BENEFITS OF WIC

17 LOCAL STORES ACCEPTING WIC:

- 7 Independent stores
- 3 Local or regional chains
- 5 National chain stores
- 2 Pharmacies

\$2,254,596

Total WIC dollars spent
by participants
at local stores

ALL STORES THAT ACCEPT WIC MUST CARRY:

- At least 8 kinds of fresh fruits and vegetables
- Whole grain products
- Lowfat milk
- Lowfat yogurt
- Canned/dried beans



WIC FARM DIRECT NUTRITION PROGRAM

The Farm Direct Nutrition Program (FDNP) provides families with an additional source of nutritious food and education on selecting and preparing fresh produce.

31 PARTICIPATING FARMERS

at local farmers markets
and farm stands

\$29,944

FDNP dollars paid
to local farmers

WIC CLINIC SITES

Albany, Harrisburg, Lebanon, Sweet Home

For more details about these numbers, please visit:

<https://www.oregon.gov/OHA/PH/HEALTHYPEOPLEFAMILIES/WIC/Pages/annual.aspx>

541-967-3888

<https://www.linncountyhealth.org/ph/page/wic-nutrition-program>

You can get this document in other languages, large print, braille, or a format you prefer. We accept all relay calls, or you can dial 711.

Revised 3/19/2024

2023 OREGON WIC DATA

MALHEUR COUNTY HEALTH DEPARTMENT

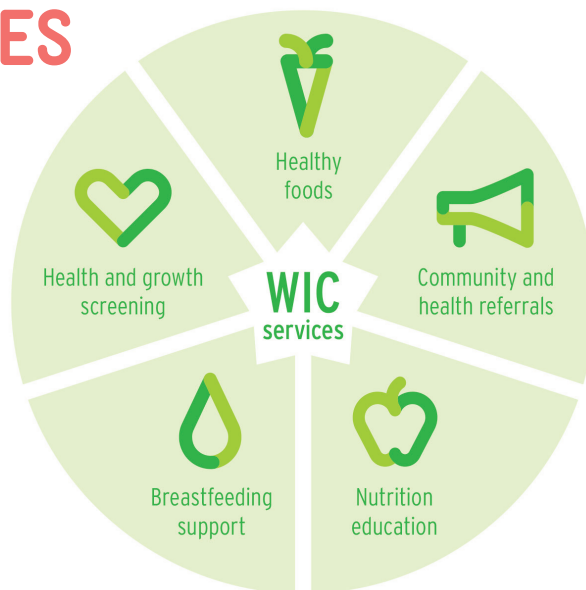
GROWING HEALTHY FUTURES

Participating in WIC supports the long-term health of women, infants, children and families. WIC is proven to support longer pregnancies and positive birth outcomes¹.

The American Academy of Pediatrics identifies three foundations of healthy child development:

- **Stable, Responsive Relationships**
- **Safe, Supportive Environments**
- **Appropriate Nutrition²**

WIC is the premier public health nutrition program and it supports all three of these developmental foundations.



¹ Fingar et al, *Journal of Maternal and Child Health*, 2017 ² American Academy of Pediatrics, *Policy statement*, 2012

WHO WE SERVED



1913

Women, infants and children participated in WIC

60%

of all pregnant women served by WIC

1082

WIC families served



84%

are working families

3 OUT OF 4



participants are infants and children under five

BREASTFEEDING

97%

of WIC moms start out breastfeeding

26%

of WIC moms breastfed exclusively for six months

2023 OREGON WIC DATA

MALHEUR COUNTY HEALTH DEPARTMENT

ECONOMIC BENEFITS OF WIC

9 LOCAL STORES ACCEPTING WIC:

- 3 Independent stores
- 3 Local or regional chains
- 1 National chain stores
- 2 Pharmacies

\$1,043,987

Total WIC dollars spent
by participants
at local stores

ALL STORES THAT ACCEPT WIC MUST CARRY:

- At least 8 kinds of fresh fruits and vegetables
- Whole grain products
- Lowfat milk
- Lowfat yogurt
- Canned/dried beans



WIC FARM DIRECT NUTRITION PROGRAM

The Farm Direct Nutrition Program (FDNP) provides families with an additional source of nutritious food and education on selecting and preparing fresh produce.

11 PARTICIPATING FARMERS

at local farmers markets
and farm stands

\$10,960

FDNP dollars paid
to local farmers

WIC CLINIC SITES

Nyssa, Ontario, Vale

For more details about these numbers, please visit:

<https://www.oregon.gov/OHA/PH/HEALTHYPEOPLEFAMILIES/WIC/Pages/annual.aspx>

541-889-7041

<http://malheurhealth.org>

You can get this document in other languages, large print, braille, or a format you prefer. We accept all relay calls, or you can dial 711.

Revised 3/19/2024

2023 OREGON WIC DATA

MARION COUNTY HEALTH AND HUMAN SERVICES

GROWING HEALTHY FUTURES

Participating in WIC supports the long-term health of women, infants, children and families. WIC is proven to support longer pregnancies and positive birth outcomes¹.

The American Academy of Pediatrics identifies three foundations of healthy child development:

- **Stable, Responsive Relationships**
- **Safe, Supportive Environments**
- **Appropriate Nutrition²**

WIC is the premier public health nutrition program and it supports all three of these developmental foundations.



¹ Fingar et al, *Journal of Maternal and Child Health*, 2017 ² American Academy of Pediatrics, *Policy statement*, 2012

WHO WE SERVED



6898

Women, infants and children participated in WIC

41%

of all pregnant women served by WIC

3907

WIC families served



76%

are working families

3 OUT OF 4



participants are infants and children under five

BREASTFEEDING

92%

of WIC moms start out breastfeeding

40%

of WIC moms breastfed exclusively for six months

2023 OREGON WIC DATA

MARION COUNTY HEALTH AND HUMAN SERVICES

ECONOMIC BENEFITS OF WIC

31 LOCAL STORES ACCEPTING WIC:

- 5 Independent stores
- 7 Local or regional chains
- 7 National chain stores
- 12 Pharmacies

\$3,529,527

Total WIC dollars spent
by participants
at local stores

ALL STORES THAT ACCEPT WIC MUST CARRY:

- At least 8 kinds of fresh fruits and vegetables
- Whole grain products
- Lowfat milk
- Lowfat yogurt
- Canned/dried beans



WIC FARM DIRECT NUTRITION PROGRAM

The Farm Direct Nutrition Program (FDNP) provides families with an additional source of nutritious food and education on selecting and preparing fresh produce.

45 PARTICIPATING FARMERS

at local farmers markets
and farm stands

\$44,092

FDNP dollars paid
to local farmers

WIC CLINIC SITES

Salem (3 locations), Santiam, Silverton, Woodburn

For more details about these numbers, please visit:

<https://www.oregon.gov/OHA/PH/HEALTHYPEOPLEFAMILIES/WIC/Pages/annual.aspx>

503-588-5057

www.co.marion.or.us/HLT/PH/WIC

You can get this document in other languages, large print, braille, or a format you prefer. We accept all relay calls, or you can dial 711.

Revised 3/19/2024

2023 OREGON WIC DATA

MULTNOMAH COUNTY HEALTH DEPARTMENT

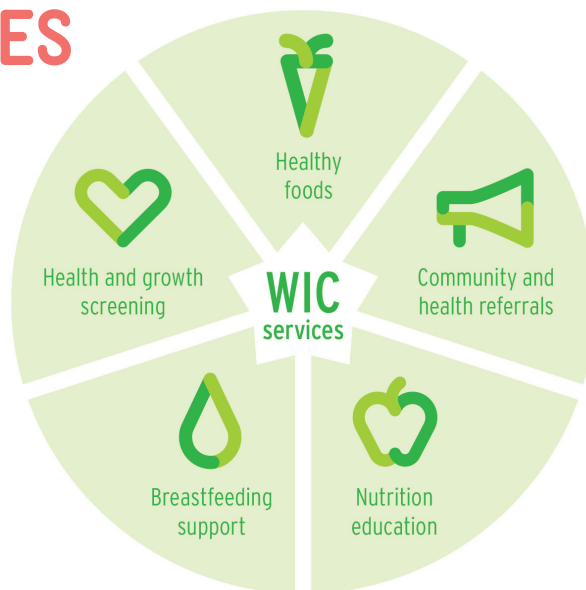
GROWING HEALTHY FUTURES

Participating in WIC supports the long-term health of women, infants, children and families. WIC is proven to support longer pregnancies and positive birth outcomes¹.

The American Academy of Pediatrics identifies three foundations of healthy child development:

- **Stable, Responsive Relationships**
- **Safe, Supportive Environments**
- **Appropriate Nutrition²**

WIC is the premier public health nutrition program and it supports all three of these developmental foundations.



¹ Fingar et al, *Journal of Maternal and Child Health*, 2017 ² American Academy of Pediatrics, *Policy statement*, 2012

WHO WE SERVED



19761

Women, infants and children participated in WIC

29%

of all pregnant women served by WIC

11381

WIC families served



59%

are working families

3 OUT OF 4



participants are infants and children under five

BREASTFEEDING

95%

of WIC moms start out breastfeeding

41%

of WIC moms breastfed exclusively for six months

2023 OREGON WIC DATA

MULTNOMAH COUNTY HEALTH DEPARTMENT

ECONOMIC BENEFITS OF WIC

83 LOCAL STORES ACCEPTING WIC:

- 20 Independent stores
- 23 Local or regional chains
- 25 National chain stores
- 15 Pharmacies

\$9,846,159

Total WIC dollars spent
by participants
at local stores

ALL STORES THAT ACCEPT WIC MUST CARRY:

- At least 8 kinds of fresh fruits and vegetables
- Whole grain products
- Lowfat milk
- Lowfat yogurt
- Canned/dried beans



WIC FARM DIRECT NUTRITION PROGRAM

The Farm Direct Nutrition Program (FDNP) provides families with an additional source of nutritious food and education on selecting and preparing fresh produce.

75 PARTICIPATING FARMERS

at local farmers markets
and farm stands

\$128,836

FDNP dollars paid
to local farmers

WIC CLINIC SITES

East County, Gateway, North Portland, Northeast,
Native American Youth Family Center

For more details about these numbers, please visit:

<https://www.oregon.gov/OHA/PH/HEALTHYPEOPLEFAMILIES/WIC/Pages/annual.aspx>

503-988-3503

multco.us/health/wic

You can get this document in other languages, large print, braille, or a format you prefer. We accept all relay calls, or you can dial 711.

Revised 3/19/2024

2023 OREGON WIC DATA

NORTH CENTRAL PUBLIC HEALTH DISTRICT

GROWING HEALTHY FUTURES

Participating in WIC supports the long-term health of women, infants, children and families. WIC is proven to support longer pregnancies and positive birth outcomes¹.

The American Academy of Pediatrics identifies three foundations of healthy child development:

- **Stable, Responsive Relationships**
- **Safe, Supportive Environments**
- **Appropriate Nutrition²**

WIC is the premier public health nutrition program and it supports all three of these developmental foundations.



¹ Fingar et al, *Journal of Maternal and Child Health*, 2017 ² American Academy of Pediatrics, *Policy statement*, 2012

WHO WE SERVED



1072

Women, infants and children participated in WIC

29%

of all pregnant women served by WIC

674

WIC families served



71%

are working families

3 OUT OF 4



participants are infants and children under five

BREASTFEEDING

94%

of WIC moms start out breastfeeding

44%

of WIC moms breastfed exclusively for six months

2023 OREGON WIC DATA

NORTH CENTRAL PUBLIC HEALTH DISTRICT

ECONOMIC BENEFITS OF WIC

3 LOCAL STORES ACCEPTING WIC:

- 1 Independent store
- 0 Local or regional chains
- 1 National chain store
- 1 Pharmacy

\$531,504

Total WIC dollars spent
by participants
at local stores

ALL STORES THAT ACCEPT WIC MUST CARRY:

- At least 8 kinds of fresh fruits and vegetables
- Whole grain products
- Lowfat milk
- Lowfat yogurt
- Canned/dried beans



WIC FARM DIRECT NUTRITION PROGRAM

The Farm Direct Nutrition Program (FDNP) provides families with an additional source of nutritious food and education on selecting and preparing fresh produce.

20 PARTICIPATING FARMERS

at local farmers markets
and farm stands

\$6,624

FDNP dollars paid
to local farmers

WIC CLINIC SITES

Maupin, Moro, The Dalles

For more details about these numbers, please visit:

<https://www.oregon.gov/OHA/PH/HEALTHYPEOPLEFAMILIES/WIC/Pages/annual.aspx>

541-506-2610

<https://www.ncphd.org/wic>

You can get this document in other languages, large print, braille, or a format you prefer. We accept all relay calls, or you can dial 711.

Revised 3/19/2024

2023 OREGON WIC DATA

POLK COUNTY HEALTH DEPARTMENT

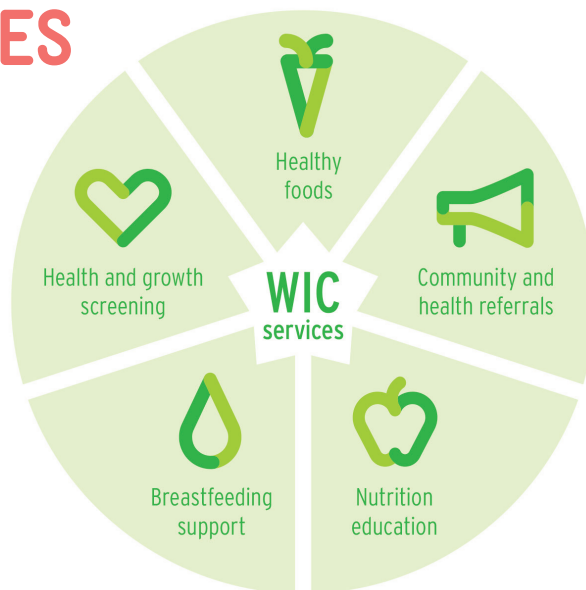
GROWING HEALTHY FUTURES

Participating in WIC supports the long-term health of women, infants, children and families. WIC is proven to support longer pregnancies and positive birth outcomes¹.

The American Academy of Pediatrics identifies three foundations of healthy child development:

- **Stable, Responsive Relationships**
- **Safe, Supportive Environments**
- **Appropriate Nutrition²**

WIC is the premier public health nutrition program and it supports all three of these developmental foundations.



¹ Fingar et al, *Journal of Maternal and Child Health*, 2017 ² American Academy of Pediatrics, *Policy statement*, 2012

WHO WE SERVED



1281

Women, infants and children participated in WIC

27%

of all pregnant women served by WIC

719

WIC families served



73%

are working families

3 OUT OF 4

participants are infants and children under five



BREASTFEEDING

93%

of WIC moms start out breastfeeding

45%

of WIC moms breastfed exclusively for six months

2023 OREGON WIC DATA

POLK COUNTY HEALTH DEPARTMENT

ECONOMIC BENEFITS OF WIC

7 LOCAL STORES ACCEPTING WIC:

- 2 Independent stores
- 2 Local or regional chains
- 2 National chain stores
- 1 Pharmacy

\$642,778

Total WIC dollars spent
by participants
at local stores

ALL STORES THAT ACCEPT WIC MUST CARRY:

- At least 8 kinds of fresh fruits and vegetables
- Whole grain products
- Lowfat milk
- Lowfat yogurt
- Canned/dried beans



WIC FARM DIRECT NUTRITION PROGRAM

The Farm Direct Nutrition Program (FDNP) provides families with an additional source of nutritious food and education on selecting and preparing fresh produce.

22

PARTICIPATING FARMERS

at local farmers markets
and farm stands

\$6,136

FDNP dollars paid
to local farmers

WIC CLINIC SITES

Dallas, Monmouth/Independence

For more details about these numbers, please visit:

<https://www.oregon.gov/OHA/PH/HEALTHYPEOPLEFAMILIES/WIC/Pages/annual.aspx>

503-623-8175

www.co.polk.or.us/ph/wic-women-infants-children

You can get this document in other languages, large print, braille, or a format you prefer. We accept all relay calls, or you can dial 711.

Revised 3/19/2024

2023 OREGON WIC DATA

TILLAMOOK COUNTY PUBLIC HEALTH

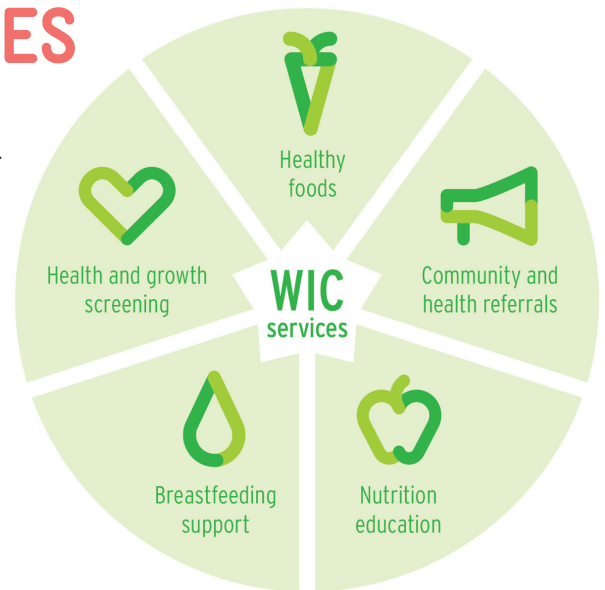
GROWING HEALTHY FUTURES

Participating in WIC supports the long-term health of women, infants, children and families. WIC is proven to support longer pregnancies and positive birth outcomes¹.

The American Academy of Pediatrics identifies three foundations of healthy child development:

- **Stable, Responsive Relationships**
- **Safe, Supportive Environments**
- **Appropriate Nutrition²**

WIC is the premier public health nutrition program and it supports all three of these developmental foundations.



¹ Fingar et al, *Journal of Maternal and Child Health*, 2017 ² American Academy of Pediatrics, *Policy statement*, 2012

WHO WE SERVED



773

Women, infants and children participated in WIC

38%

of all pregnant women served by WIC

453

WIC families served



67%

are working families

3 OUT OF 4



participants are infants and children under five

BREASTFEEDING

100%

of WIC moms start out breastfeeding

35%

of WIC moms breastfed exclusively for six months

2023 OREGON WIC DATA

TILLAMOOK COUNTY PUBLIC HEALTH

ECONOMIC BENEFITS OF WIC

5 LOCAL STORES ACCEPTING WIC:

- 3 Independent stores
- 0 Local or regional chains
- 1 National chain store
- 1 Pharmacy

\$410,260

Total WIC dollars spent
by participants
at local stores

ALL STORES THAT ACCEPT WIC MUST CARRY:

- At least 8 kinds of fresh fruits and vegetables
- Whole grain products
- Lowfat milk
- Lowfat yogurt
- Canned/dried beans



WIC FARM DIRECT NUTRITION PROGRAM

The Farm Direct Nutrition Program (FDNP) provides families with an additional source of nutritious food and education on selecting and preparing fresh produce.

9 PARTICIPATING FARMERS

at local farmers markets
and farm stands

\$4,880

FDNP dollars paid
to local farmers

WIC CLINIC SITES

North County (Rockaway Beach), South County (Cloverdale/Hebo),
Tillamook

For more details about these numbers, please visit:

<https://www.oregon.gov/OHA/PH/HEALTHYPEOPLEFAMILIES/WIC/Pages/annual.aspx>

503-842-3900

<https://tillamookchc.org/public-health/nutrition-for-women-infants-children-wic/>

You can get this document in other languages, large print, braille, or a format you prefer. We accept all relay calls, or you can dial 711.

Revised 3/19/2024

2023 OREGON WIC DATA

CENTER FOR HUMAN DEVELOPMENT (UNION)

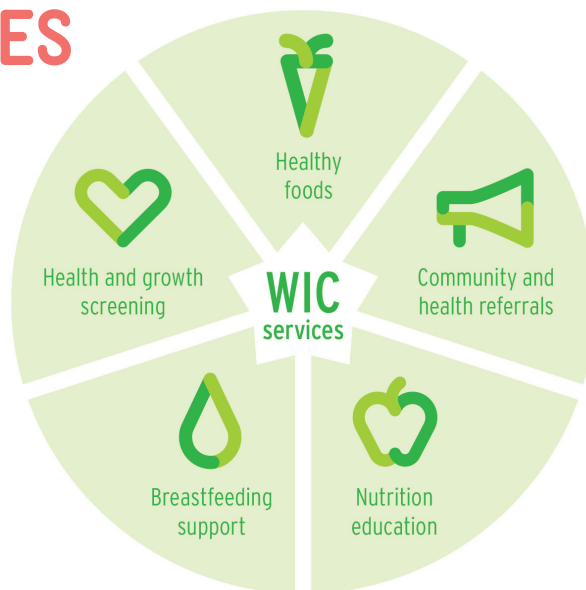
GROWING HEALTHY FUTURES

Participating in WIC supports the long-term health of women, infants, children and families. WIC is proven to support longer pregnancies and positive birth outcomes¹.

The American Academy of Pediatrics identifies three foundations of healthy child development:

- **Stable, Responsive Relationships**
- **Safe, Supportive Environments**
- **Appropriate Nutrition²**

WIC is the premier public health nutrition program and it supports all three of these developmental foundations.



¹ Fingar et al, *Journal of Maternal and Child Health*, 2017 ² American Academy of Pediatrics, *Policy statement*, 2012

WHO WE SERVED



916

Women, infants and children participated in WIC

32%

of all pregnant women served by WIC

510

WIC families served



67%

are working families

3 OUT OF 4



participants are infants and children under five

BREASTFEEDING

100%

of WIC moms start out breastfeeding

31%

of WIC moms breastfed exclusively for six months

2023 OREGON WIC DATA

CENTER FOR HUMAN DEVELOPMENT (UNION)

ECONOMIC BENEFITS OF WIC

6 LOCAL STORES ACCEPTING WIC:

- 4 Independent stores
- 0 Local or regional chains
- 1 National chain store
- 1 Pharmacy

\$417,410

Total WIC dollars spent
by participants
at local stores

ALL STORES THAT ACCEPT WIC MUST CARRY:

- At least 8 kinds of fresh fruits and vegetables
- Whole grain products
- Lowfat milk
- Lowfat yogurt
- Canned/dried beans



WIC FARM DIRECT NUTRITION PROGRAM

The Farm Direct Nutrition Program (FDNP) provides families with an additional source of nutritious food and education on selecting and preparing fresh produce.

10 PARTICIPATING FARMERS

at local farmers markets
and farm stands

\$4,504

FDNP dollars paid
to local farmers

WIC CLINIC SITES

La Grande

For more details about these numbers, please visit:

<https://www.oregon.gov/OHA/PH/HEALTHYPEOPLEFAMILIES/WIC/Pages/annual.aspx>

541-962-8829

<https://www.chdinc.org/wic>

You can get this document in other languages, large print, braille, or a format you prefer. We accept all relay calls, or you can dial 711.

Revised 3/19/2024

2023 OREGON WIC DATA

WASHINGTON COUNTY PUBLIC HEALTH

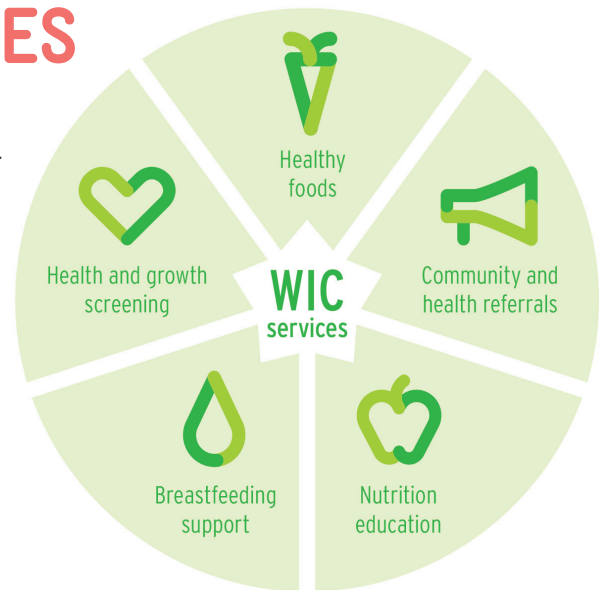
GROWING HEALTHY FUTURES

Participating in WIC supports the long-term health of women, infants, children and families. WIC is proven to support longer pregnancies and positive birth outcomes¹.

The American Academy of Pediatrics identifies three foundations of healthy child development:

- **Stable, Responsive Relationships**
- **Safe, Supportive Environments**
- **Appropriate Nutrition²**

WIC is the premier public health nutrition program and it supports all three of these developmental foundations.



¹ Fingar et al, *Journal of Maternal and Child Health*, 2017 ² American Academy of Pediatrics, *Policy statement*, 2012

WHO WE SERVED



13466

Women, infants and children participated in WIC

22%

of all pregnant women served by WIC

7982

WIC families served



73%

are working families

3 OUT OF 4



participants are infants and children under five

BREASTFEEDING

96%

of WIC moms start out breastfeeding

47%

of WIC moms breastfed exclusively for six months

2023 OREGON WIC DATA

WASHINGTON COUNTY PUBLIC HEALTH

ECONOMIC BENEFITS OF WIC

57 LOCAL STORES ACCEPTING WIC:

- 10 Independent stores
- 7 Local or regional chains
- 17 National chain stores
- 23 Pharmacies

\$6,641,240

Total WIC dollars spent
by participants
at local stores

ALL STORES THAT ACCEPT WIC MUST CARRY:

- At least 8 kinds of fresh fruits and vegetables
- Whole grain products
- Lowfat milk
- Lowfat yogurt
- Canned/dried beans



WIC FARM DIRECT NUTRITION PROGRAM

The Farm Direct Nutrition Program (FDNP) provides families with an additional source of nutritious food and education on selecting and preparing fresh produce.

66

PARTICIPATING FARMERS

at local farmers markets
and farm stands

\$78,704

FDNP dollars paid
to local farmers

WIC CLINIC SITES

Beaverton, Hillsboro, Tigard

For more details about these numbers, please visit:

<https://www.oregon.gov/OHA/PH/HEALTHYPEOPLEFAMILIES/WIC/Pages/annual.aspx>

503-846-3555

www.co.washington.or.us/HHS/PublicHealth/WIC/index.cfm

You can get this document in other languages, large print, braille, or a format you prefer. We accept all relay calls, or you can dial 711.

Revised 3/19/2024

2023 OREGON WIC DATA

SALUD WIC PROGRAM

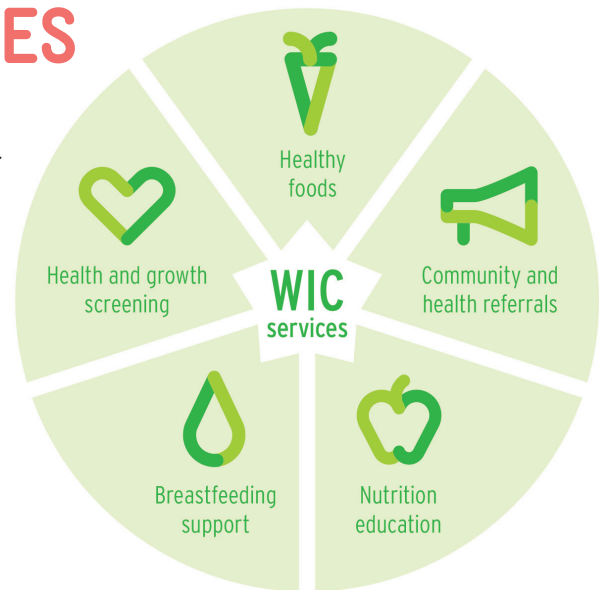
GROWING HEALTHY FUTURES

Participating in WIC supports the long-term health of women, infants, children and families. WIC is proven to support longer pregnancies and positive birth outcomes¹.

The American Academy of Pediatrics identifies three foundations of healthy child development:

- **Stable, Responsive Relationships**
- **Safe, Supportive Environments**
- **Appropriate Nutrition²**

WIC is the premier public health nutrition program and it supports all three of these developmental foundations.



¹ Fingar et al, *Journal of Maternal and Child Health*, 2017 ² American Academy of Pediatrics, *Policy statement*, 2012

WHO WE SERVED



12212

Women, infants and children participated in WIC

27%

of all pregnant women served by WIC

6945

WIC families served



83%

are working families

3 OUT OF 4



participants are infants and children under five

BREASTFEEDING

95%

of WIC moms start out breastfeeding

37%

of WIC moms breastfed exclusively for six months

2023 OREGON WIC DATA

SALUD WIC PROGRAM

ECONOMIC BENEFITS OF WIC

14 LOCAL STORES ACCEPTING WIC:

- 5 Independent stores
- 3 Local or regional chains
- 3 National chain stores
- 3 Pharmacies

\$6,495,064

Total WIC dollars spent
by participants
at local stores

ALL STORES THAT ACCEPT WIC MUST CARRY:

- At least 8 kinds of fresh fruits and vegetables
- Whole grain products
- Lowfat milk
- Lowfat yogurt
- Canned/dried beans



WIC FARM DIRECT NUTRITION PROGRAM

The Farm Direct Nutrition Program (FDNP) provides families with an additional source of nutritious food and education on selecting and preparing fresh produce.

22

**PARTICIPATING
FARMERS**

at local farmers markets
and farm stands

\$86,704

FDNP dollars paid
to local farmers

WIC CLINIC SITES

Dayton, Grand Ronde, McMinnville, Newberg, Salem (2 locations),
Sheridan, Woodburn (2 locations)

For more details about these numbers, please visit:

<https://www.oregon.gov/OHA/PH/HEALTHYPEOPLEFAMILIES/WIC/Pages/annual.aspx>

1-855-942-9420

www.saludwic.org/

You can get this document in other languages, large print, braille, or a format you prefer. We accept all relay calls, or you can dial 711.

Revised 3/19/2024

2023 OREGON WIC DATA

THE CONFEDERATED TRIBES OF WARM SPRINGS

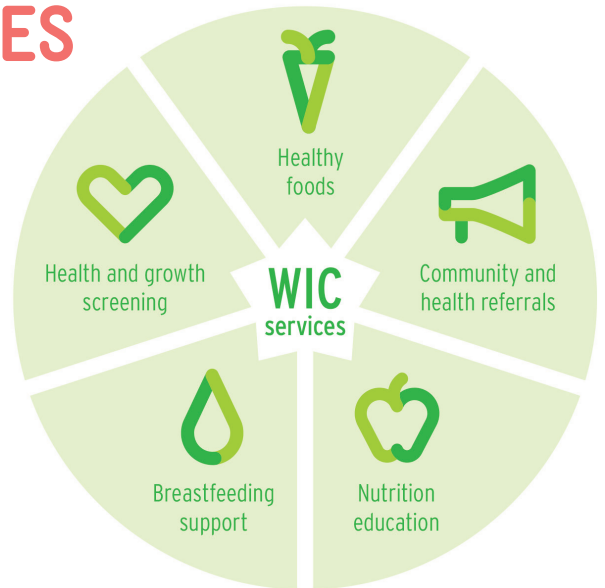
GROWING HEALTHY FUTURES

Participating in WIC supports the long-term health of women, infants, children and families. WIC is proven to support longer pregnancies and positive birth outcomes¹.

The American Academy of Pediatrics identifies three foundations of healthy child development:

- **Stable, Responsive Relationships**
- **Safe, Supportive Environments**
- **Appropriate Nutrition²**

WIC is the premier public health nutrition program and it supports all three of these developmental foundations.



¹ Fingar et al, *Journal of Maternal and Child Health*, 2017 ² American Academy of Pediatrics, *Policy statement*, 2012

WHO WE SERVED



357

Women, infants and children participated in WIC

42%

of all pregnant women served by WIC

202

WIC families served



41%

are working families

3 OUT OF 4



participants are infants and children under five

BREASTFEEDING

98%

of WIC moms start out breastfeeding

56%

of WIC moms breastfed exclusively for six months

2023 OREGON WIC DATA

THE CONFEDERATED TRIBES OF WARM SPRINGS

ECONOMIC BENEFITS OF WIC

4 LOCAL STORES ACCEPTING WIC:

- 2 Independent stores
- 1 Local or regional chains
- 1 National chain stores
- 0 Pharmacies

\$175,164

Total WIC dollars spent
by participants
at local stores

ALL STORES THAT ACCEPT WIC MUST CARRY:

- At least 8 kinds of fresh fruits and vegetables
- Whole grain products
- Lowfat milk
- Lowfat yogurt
- Canned/dried beans



WIC FARM DIRECT NUTRITION PROGRAM

The Farm Direct Nutrition Program (FDNP) provides families with an additional source of nutritious food and education on selecting and preparing fresh produce.

6

PARTICIPATING FARMERS

at local farmers markets
and farm stands

\$1,188

FDNP dollars paid
to local farmers

WIC CLINIC SITES

Warm Springs Health and Wellness Center

For more details about these numbers, please visit:

<https://www.oregon.gov/OHA/PH/HEALTHYPEOPLEFAMILIES/WIC/Pages/annual.aspx>

541-553-2460

<https://warmsprings-nsn.gov/>

You can get this document in other languages, large print, braille, or a format you prefer. We accept all relay calls, or you can dial 711.

Revised 3/19/2024

2023 OREGON WIC DATA

THE CONFEDERATED TRIBES OF UMATILLA

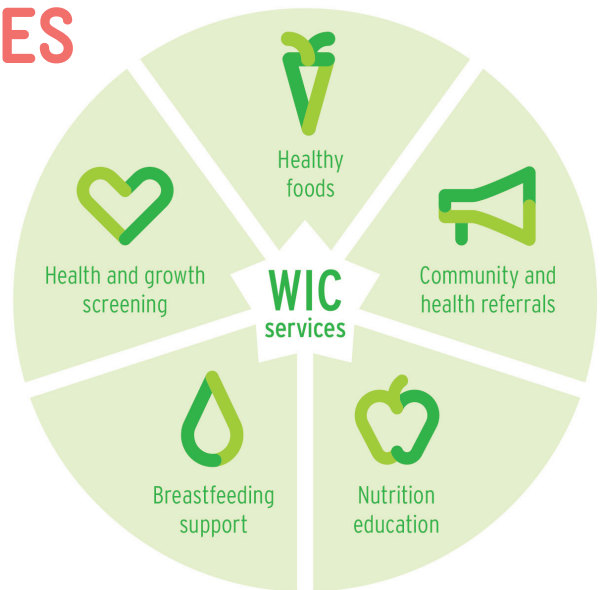
GROWING HEALTHY FUTURES

Participating in WIC supports the long-term health of women, infants, children and families. WIC is proven to support longer pregnancies and positive birth outcomes¹.

The American Academy of Pediatrics identifies three foundations of healthy child development:

- **Stable, Responsive Relationships**
- **Safe, Supportive Environments**
- **Appropriate Nutrition²**

WIC is the premier public health nutrition program and it supports all three of these developmental foundations.



¹ Fingar et al, *Journal of Maternal and Child Health*, 2017 ² American Academy of Pediatrics, *Policy statement*, 2012

WHO WE SERVED



133

Women, infants and children participated in WIC

42%

of all pregnant women served by WIC

85

WIC families served



56%

are working families

3 OUT OF 4



participants are infants and children under five

BREASTFEEDING

100%

of WIC moms start out breastfeeding

37%

of WIC moms breastfed exclusively for six months

2023 OREGON WIC DATA

THE CONFEDERATED TRIBES OF UMATILLA

ECONOMIC BENEFITS OF WIC

9 LOCAL STORES ACCEPTING WIC:

- 4 Independent stores
- 0 Local or regional chains
- 3 National chain stores
- 2 Pharmacies

\$48,671

Total WIC dollars spent
by participants
at local stores

ALL STORES THAT ACCEPT WIC MUST CARRY:

- At least 8 kinds of fresh fruits and vegetables
- Whole grain products
- Lowfat milk
- Lowfat yogurt
- Canned/dried beans



WIC FARM DIRECT NUTRITION PROGRAM

The Farm Direct Nutrition Program (FDNP) provides families with an additional source of nutritious food and education on selecting and preparing fresh produce.

17 PARTICIPATING FARMERS

at local farmers markets
and farm stands

\$468

FDNP dollars paid
to local farmers

WIC CLINIC SITES

Yellowhawk Tribal Health Center

For more details about these numbers, please visit:

<https://www.oregon.gov/OHA/PH/HEALTHYPEOPLEFAMILIES/WIC/Pages/annual.aspx>

541-240-8521

<https://www.ctuir.org/departments/yellowhawk/>

You can get this document in other languages, large print, braille, or a format you prefer. We accept all relay calls, or you can dial 711.

Revised 3/19/2024

2023 OREGON WIC DATA

UMATILLA-MORROW HEAD START

GROWING HEALTHY FUTURES

Participating in WIC supports the long-term health of women, infants, children and families. WIC is proven to support longer pregnancies and positive birth outcomes¹.

The American Academy of Pediatrics identifies three foundations of healthy child development:

- **Stable, Responsive Relationships**
- **Safe, Supportive Environments**
- **Appropriate Nutrition²**

WIC is the premier public health nutrition program and it supports all three of these developmental foundations.



¹ Fingar et al, *Journal of Maternal and Child Health*, 2017 ² American Academy of Pediatrics, *Policy statement*, 2012

WHO WE SERVED



4338

Women, infants and children participated in WIC

38%

of all pregnant women served by WIC

2468

WIC families served



78%

are working families

3 OUT OF 4



participants are infants and children under five

BREASTFEEDING

91%

of WIC moms start out breastfeeding

27%

of WIC moms breastfed exclusively for six months

2023 OREGON WIC DATA

UMATILLA-MORROW HEAD START

ECONOMIC BENEFITS OF WIC

12 LOCAL STORES ACCEPTING WIC:

- 6 Independent stores
- 1 Local or regional chain
- 3 National chain stores
- 2 Pharmacies

\$2,331,886

Total WIC dollars spent
by participants
at local stores

ALL STORES THAT ACCEPT WIC MUST CARRY:

- At least 8 kinds of fresh fruits and vegetables
- Whole grain products
- Lowfat milk
- Lowfat yogurt
- Canned/dried beans



WIC FARM DIRECT NUTRITION PROGRAM

The Farm Direct Nutrition Program (FDNP) provides families with an additional source of nutritious food and education on selecting and preparing fresh produce.

22

**PARTICIPATING
FARMERS**

at local farmers markets
and farm stands

\$23,896

FDNP dollars paid
to local farmers

WIC CLINIC SITES

Boardman, Fossil, Heppner, Hermiston, Irrigon, Milton-Freewater, Pendleton, Umatilla

For more details about these numbers, please visit:

<https://www.oregon.gov/OHA/PH/HEALTHYPEOPLEFAMILIES/WIC/Pages/annual.aspx>

1-800-559-5878

<https://umchs.com/programs/wic/>

You can get this document in other languages, large print, braille, or a format you prefer. We accept all relay calls, or you can dial 711.

Revised 3/19/2024

2023 OREGON WIC DATA

WINDING WATERS MEDICAL CLINIC

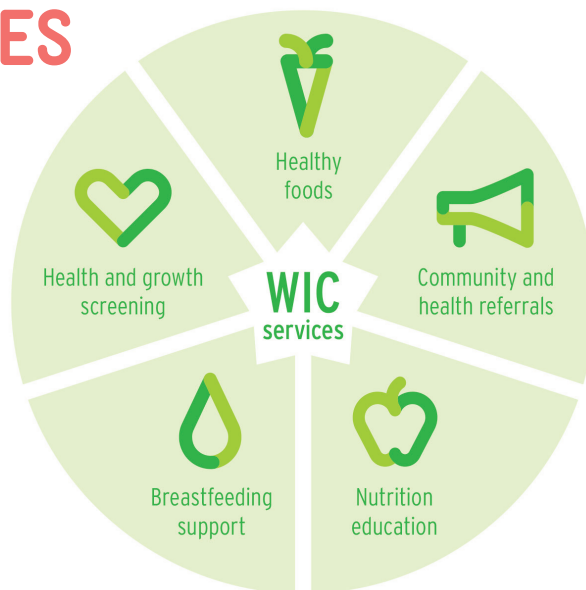
GROWING HEALTHY FUTURES

Participating in WIC supports the long-term health of women, infants, children and families. WIC is proven to support longer pregnancies and positive birth outcomes¹.

The American Academy of Pediatrics identifies three foundations of healthy child development:

- **Stable, Responsive Relationships**
- **Safe, Supportive Environments**
- **Appropriate Nutrition²**

WIC is the premier public health nutrition program and it supports all three of these developmental foundations.



¹ Fingar et al, *Journal of Maternal and Child Health*, 2017 ² American Academy of Pediatrics, *Policy statement*, 2012

WHO WE SERVED



122

Women, infants and children participated in WIC

44%

of all pregnant women served by WIC

77

WIC families served



62%

are working families

3 OUT OF 4



participants are infants and children under five

BREASTFEEDING

95%

of WIC moms start out breastfeeding

43%

of WIC moms breastfed exclusively for six months

2023 OREGON WIC DATA

WINDING WATERS MEDICAL CLINIC

ECONOMIC BENEFITS OF WIC

4 LOCAL STORES ACCEPTING WIC:

- 3 Independent stores
- 0 Local or regional chains
- 1 National chain store
- 0 Pharmacies

\$14,764

Total WIC dollars spent
by participants
at local stores

ALL STORES THAT ACCEPT WIC MUST CARRY:

- At least 8 kinds of fresh fruits and vegetables
- Whole grain products
- Lowfat milk
- Lowfat yogurt
- Canned/dried beans



WIC FARM DIRECT NUTRITION PROGRAM

The Farm Direct Nutrition Program (FDNP) provides families with an additional source of nutritious food and education on selecting and preparing fresh produce.

3

PARTICIPATING FARMERS

at local farmers markets
and farm stands

\$420

FDNP dollars paid
to local farmers

WIC CLINIC SITES

Enterprise, Joseph, Wallowa

For more details about these numbers, please visit:

<https://www.oregon.gov/OHA/PH/HEALTHYPEOPLEFAMILIES/WIC/Pages/annual.aspx>

541-426-4502

<https://windingwaters.org/wic-services/>

You can get this document in other languages, large print, braille, or a format you prefer. We accept all relay calls, or you can dial 711.

Revised 3/19/2024