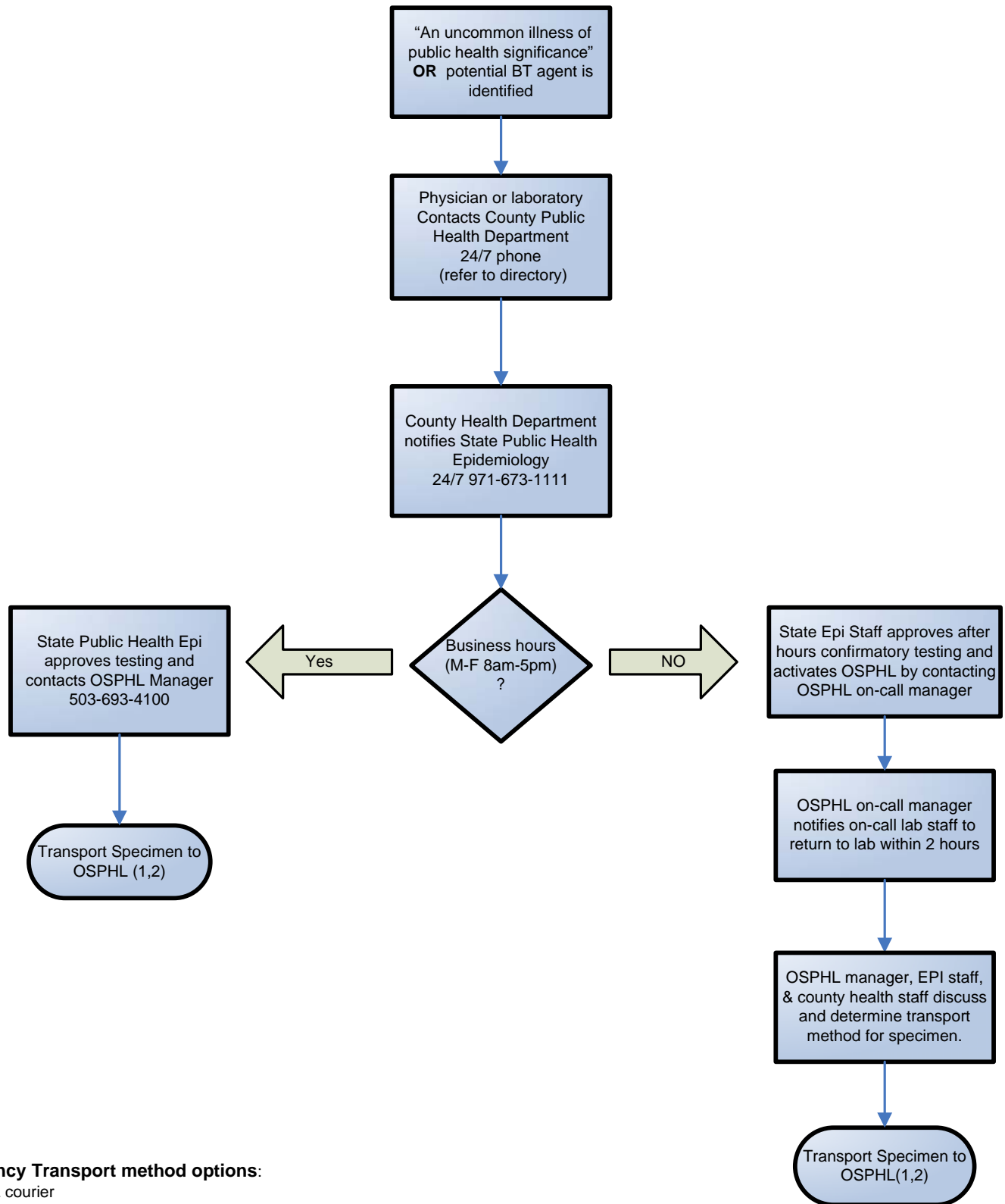


**Oregon State Public Health Laboratory (OSPHL) Algorithm for URGENT Transport of Specimens To OSPHL for Confirmatory Testing**



**1) Emergency Transport method options:**

- OSPHL courier
- Sentinel Lab Courier
- FBI or other emergency responders
- Public health staff

2) Appropriate regulations for the shipment of infectious materials must be followed.

The shipper is responsible for the proper packaging and shipping of all specimens.

Shippers must be trained and certified by their employer to be able to prepare and ship packages containing category A and B infectious substances.