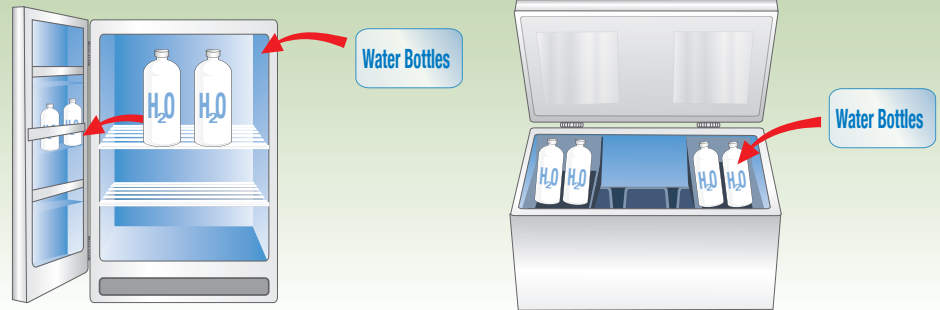


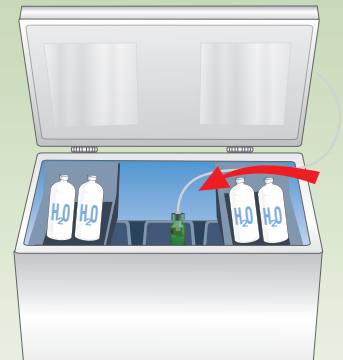
Vaccine Freezer Setup

Preparing for Vaccine Storage

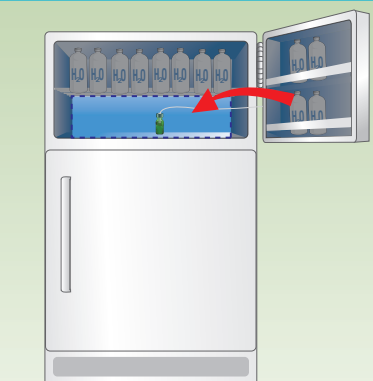
1 Put water bottles in areas where vaccines should not be stored, including the freezer door and on the top shelf of the freezer.



2 In addition to your primary probed thermometer, maintain at least one continuous-logging back-up thermometer for emergency use.

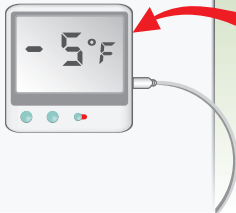


In a stand-alone freezer, place the digital thermometer probe in the center of the freezer, next to the vaccine.

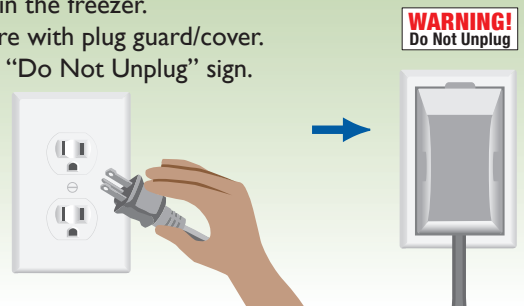


In a combination unit freezer, place the probe of the digital thermometer in the center of the shelf or freezer floor.

3 Attach the display of the digital thermometer to the outside of refrigerator, either on the door or on the side. Set the temperature modes.



4 Plug in the freezer. Secure with plug guard/cover. Post "Do Not Unplug" sign.



5 Set the freezer temperature. If the freezer has a thermostat, set it at -5°F. If it has a dial with a range of numbers, set it in the middle. The next morning, check the temperature and adjust it until it stabilizes below 0°F.



6 Once the temperature has stabilized, start recording Min/Max temperatures every morning. Do not store vaccines in the freezer until the temperature stays below 0°F for 3-5 days.

C Temperature Log for Freezer - Celsius
Days 1-15

Monitor temperatures closely!
1. Write your initials below in "Staff initials" and note the time in "Exact Time"
2. Record the maximum and minimum temperatures at the beginning of each day. Max and min are the highest and lowest temps reached since you checked them. Documenting the current temperature is optional.
3. If any out-of-range temps, see instructions to the right.
4. Keep this documentation, data logger logs, and vaccine storage records for three years.

Day of Month	1	2	3	4	5
Staff Initials					
Exact Time					
Maximum Temp					
Minimum Temp					
Danger! Temperatures above -15°C are too high					
Temperature	-15°C	-16°C	-17°C	-18°C	-19°C