

---

# Improving Routine Immunization Rates



Lauren Enciso, MPH  
Pronouns: She/her/ella  
IQIP Consultant

Oregon Immunization Program

**Oregon**  
**Health**  
Authority

---

## Today's topics:

- What factors impact rates in your clinic?
- Immunization Quality Improvement for Providers (IQIP)
- Oregon CCO/Clinic Resource Guide
  - Using data to identify reasons for low rates
  - Identifying and addressing access barriers
  - Reduce missed opportunities and recalling patients that fall behind
  - Increase knowledge of immunizations

# What factors impact immunization rates in your area?



# Levels of Impact on rates

Community



Clinic



Individual



# Levels of Impact on Rates

**Community**



**Clinic**



**Individual**



# Clinic level



What factors impact rates at your clinic?



# Clinic level



- How clinics follow up with no-shows
- Staff knowledge of immunizations
- Performing all AAP well-child exams
- Administering vaccines at sick visits
- Vaccine hesitancy
- Administering all doses due at every visit
- Pandemic related factors

# IQIP



IMMUNIZATION QUALITY IMPROVEMENT FOR PROVIDERS

---

Oregon  
Health  
Authority



A photograph of a forest during autumn. The ground is covered in fallen leaves in shades of orange, red, and brown. The trees have thin trunks and their leaves are mostly yellow and orange. The lighting is soft, suggesting a low sun, creating a warm and serene atmosphere.

**‘Give me six hours to chop down a tree and  
I will spend the first four sharpening the axe.’  
Abraham Lincoln**

# IQIP Basics

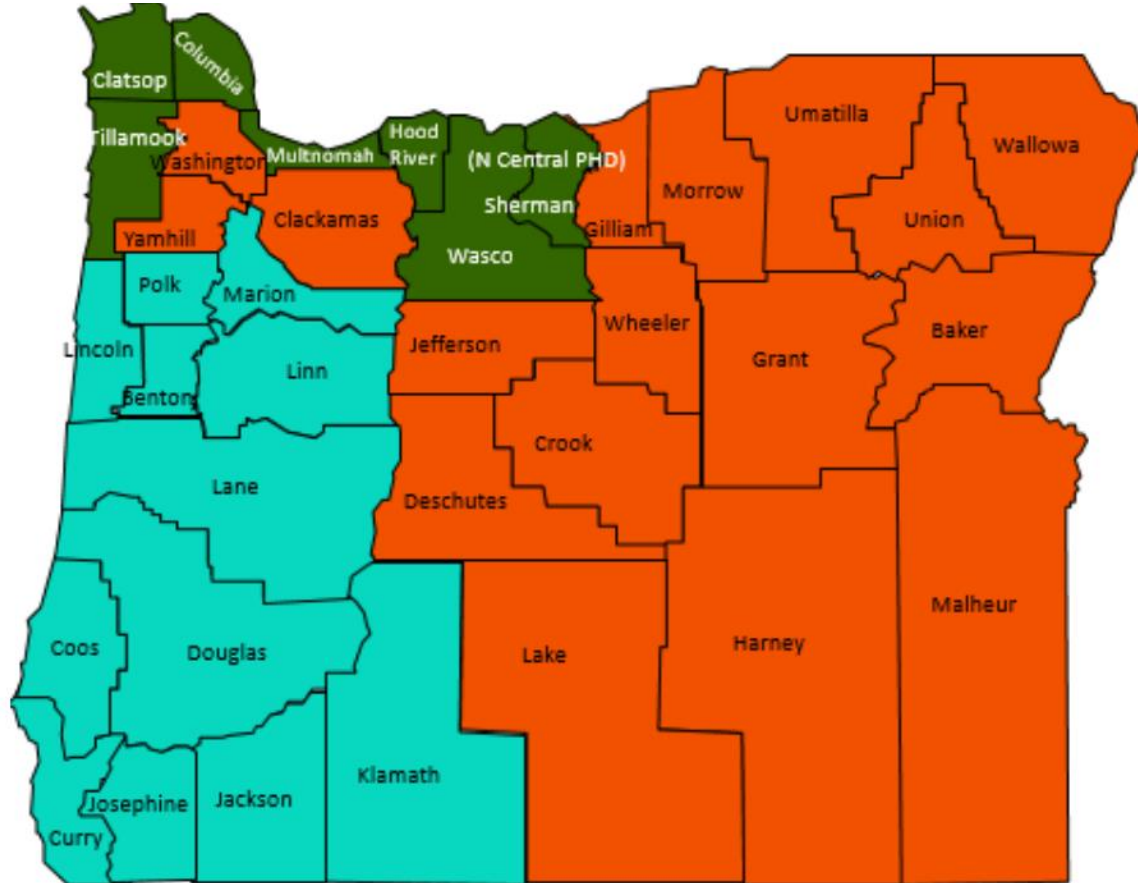
## Focus:

- Improve clinical vaccination workflow
- Healthcare teams maximize opportunities to vaccinate patients

## Benefits:

- Meet CCO childhood and adolescent vaccine incentive metrics
- Strengthen partnerships
- Streamlined immunization workflow
- Increased patient satisfaction
- A healthier community

# Oregon Immunization Program IQIP Team



<b>Albert Koroloff</b> 971-673-0330	VFC Helpdesk 971-673-4832
Yakima Valley Farm Workers Legacy Health Kaiser Permanente OHSU	ALERT IIS Helpdesk 800-980-9431
<b>Sam McClean</b> 971-673-0430	Rex Larsen – QI manager 971-673-0328
Planned Parenthood (PCW) St. Charles Health Mosaic Medical Tribal Health Providence PMG (NW Oregon)	Erin Corrigan – VFC Manager 971-673-0296
<b>Lauren Enciso</b> 971-707-8248	XXXXXXXX- Billing 971-673-0301
Oregon Medical Group Samaritan Health PeaceHealth La Clinica Providence PMG (SW Oregon)	Shelby Williams - Shipping 971-673-0313
	Nick Chew – VFC Policy Analyst 971-673-2376

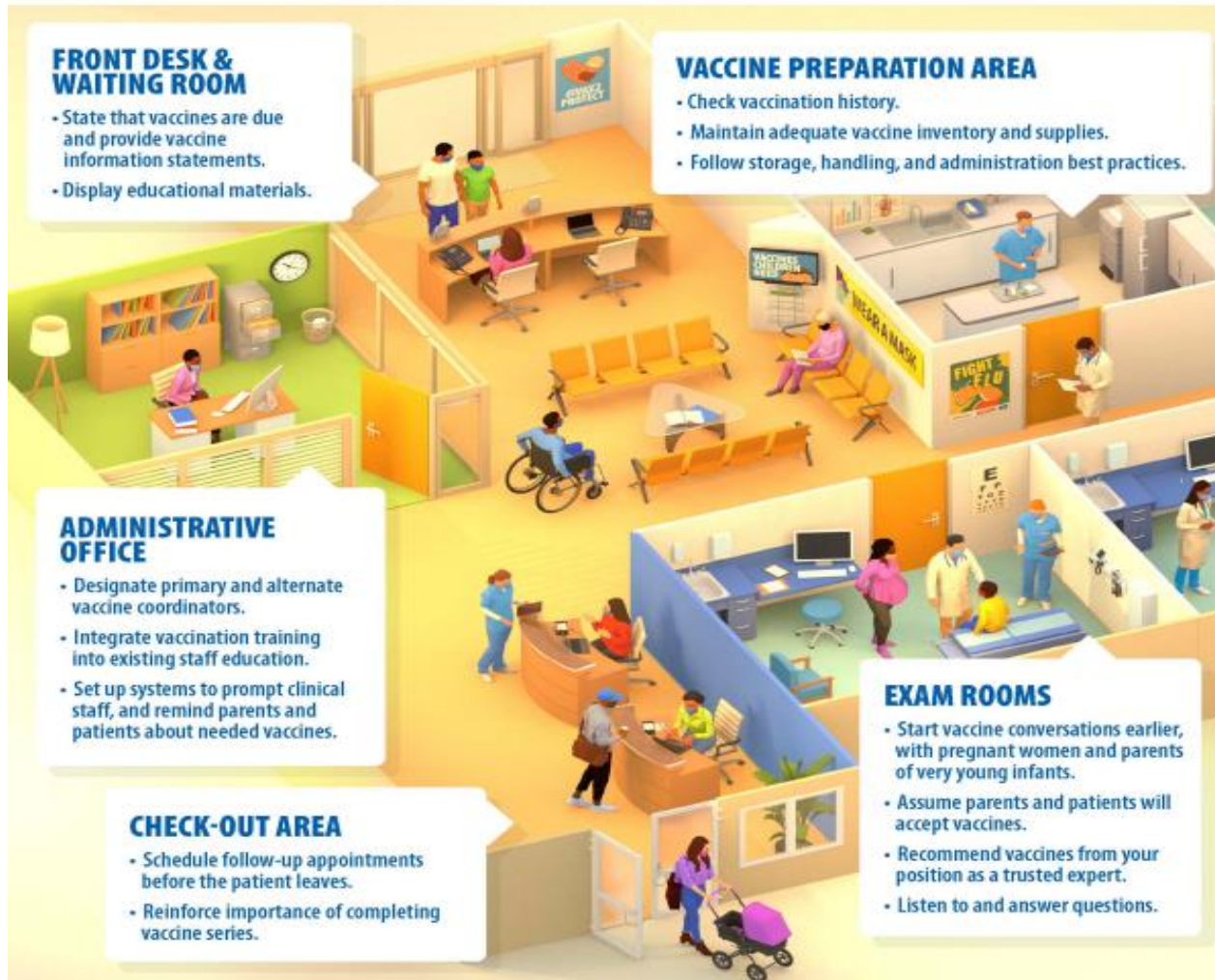
# What does an IQIP visit look like?



- **Time:** 2-hour initial meeting (in-person or virtual) followed by a 2, 6 and 12-month support call/check-ins.
- **Space:** Room with space for the team and ability to project PowerPoint on-screen or ability to organize virtually.
- **Staff:** VFC coordinator, VFC back-up, clinic manager, QI coordinator, MAs, front desk and prescribing providers (whenever possible).



# Assessing clinic workflow



# IQIP Strategies

1. Facilitate return to clinic for vaccination
2. Leveraging ALERT IIS or your EHR to improve immunization practice
3. Making strong vaccination recommendations
4. Improving vaccine communications
5. (Custom) Recommend HPV vaccine starting at age 9

## Example Clinic:

Age: 24–35-month-old  
(2-year-olds)

Series:

4 Dtap

3 Polio

1 MMR

3 Hib

3 Hep B

1 Varicella

4 PVC

### Clinic X

Childhood Immunization Assessment



Two-Year-Olds<sup>1</sup>  
9 (was 14)

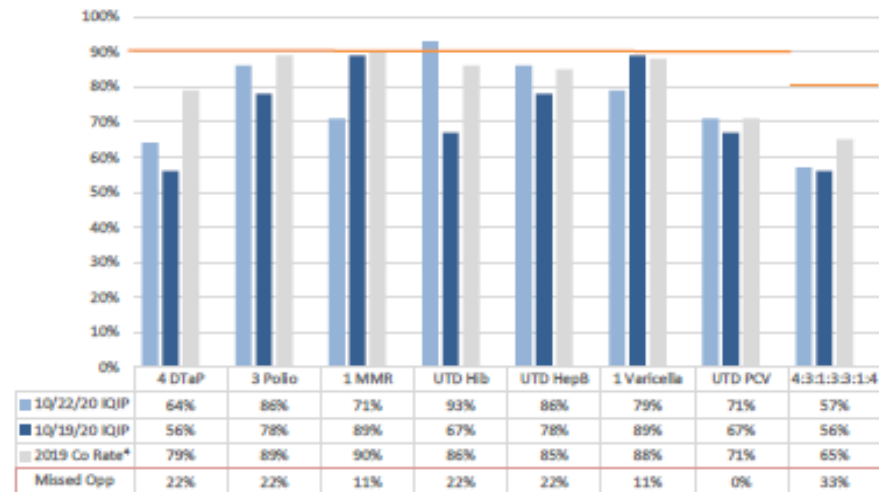
Assessment Date<sup>2</sup>  
10/19/2020

Up to date rate<sup>1</sup>

**56%**

4:3:1:3:3:1:4 series<sup>3</sup>

Immunization Rates at 24 Months and Healthy People 2020 Goals





# Assessing Clinic Workflow

## The Community Guide

- Collection of evidence-based [findings](#) of the [Community Preventive Services Task Force \(CPSTF\)](#).
- Resource to help you select interventions to improve health and prevent disease



# Oregon CCO and Clinic Resource Guide



**Evidence-based Strategies for Improving Childhood and Adolescent Immunization Rates: A Guide for CCOs, Health Plans and Clinics**

---

# Strategy 1

Use Data to identify reasons for low immunization rates

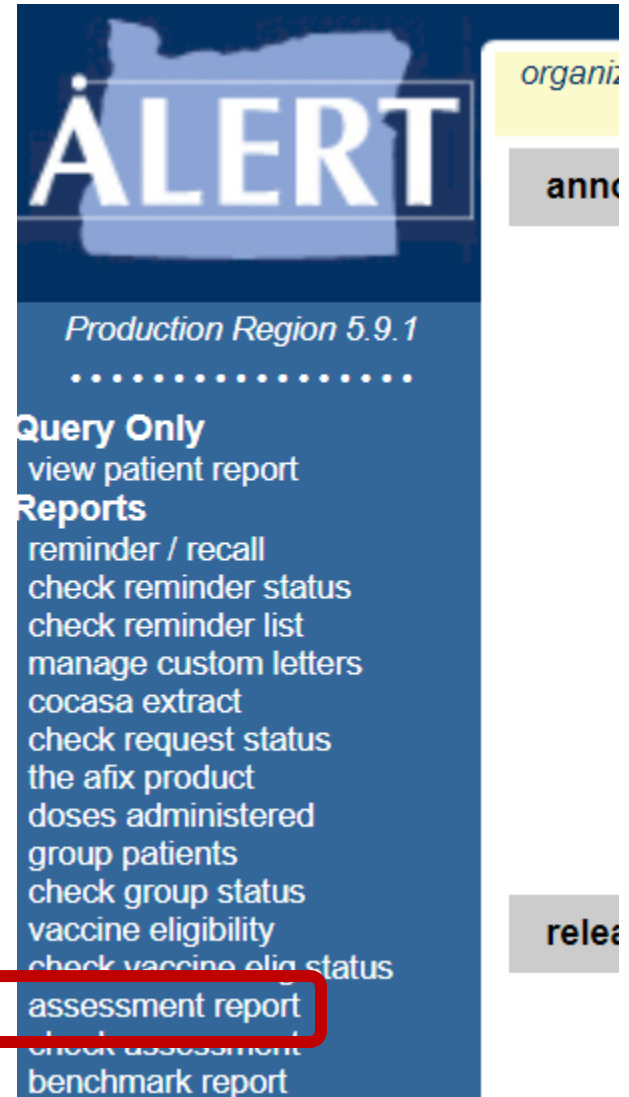
## What health care providers can do to identify reasons for low rates:

- Routinely assess rates through the EHR or ALERT IIS.
- Create a plan for monitoring immunization data quality and submission to ALERT IIS
- Share information about the clinic's rates with clinic staff.
- Participate in the Oregon Immunization Program's IQIP Program.

# Assessing rates at the clinic level

Report name: [Assessment Report](#)

- Includes all active patients at your clinic.
- A good childhood-level report
- Can be accessed by any ALERTIIS user
- Not available for adolescent patients.



# Interpreting the assessment report:

## Overall Immunization Rates

<b>Immunization Status</b>		
<b>Age(months)</b>	<b>Up-to-Date<sup>1-4</sup> (UTD)</b>	<b>Late<sup>1-4</sup> UTD@Assessment</b>
<b>36 - 72 Months of Age</b>		
72		
24		
12		
7		
<b>24 - 35 Months of Age</b>		
24	69.9%	78.0%
12	78.8%	84.1%
7	69.3%	84.1%

# Interpreting the assessment report:

## Age specific benchmarks

UTD Grid	DTaP	Hep B	Hib	MMR	Polio	Prevnar	Varicella
@ 3 months	1	1	1		1	1	
@ 5 months	2	2	2		2	2	
@ 7 months	3	2	2		2	3	
@ 9 months	3	2	2		2	3	
@ 12 months	3	2	2		2	3	
@ 16 months	4	3	3	1	3	4	1
@ 19 months	4	3	3	1	3	4	1
@ 21 months	4	3	3	1	3	4	1
@ 24 months	4	3	3	1	3	4	1
@ 72 months	5	3	4	2	4	4	1











# Oregon-wide rates:

## Access the Data



### Child Immunization Rates

Immunization rates for two-year-olds in Oregon - [static data](#)

Immunization rates for two-year-olds in Oregon - [interactive data](#)



### Adolescent Immunization Rates

Immunization rates for adolescents age 13 to 17 - [static data](#)

Immunization rates for adolescents age 13 to 17 - [interactive data](#)



### Maternal Immunization Rates

Immunization rates for women in Oregon who delivered their babies in 2017



### Adult Immunization Rates

Oregon immunization rates for adults, including healthcare workers.

## Who to Contact

### Questions about rates

[ALERT IIS Help Desk](#)

800-980-9481

9:00am - 4:00pm

### Information on clinic-specific rates

Quality Improvement Manager

[imm.info@dhsosha.state.](mailto:imm.info@dhsosha.state.or.us)

[or.us](http://or.us)

### School immunization data

School Law Team

[oregon.imm@dhsosha.state.or.us](mailto:oregon.imm@dhsosha.state.or.us)

## Strategy 2

Identify and eliminate barriers to  
access

## What health care providers can do to identify and eliminate barriers to access:

- Use standing orders
- Offer immunization-only appointments
- Offer expanded clinic hours and walk-in appointments



## Strategy 3

Reduce missed opportunities and recall patients who are behind on vaccines

## What health care providers can do to reduce missed opportunities:

- Forecast for immunizations at every encounter
- Provide all vaccines
- Schedule the next immunization visit
- Recall patients who are behind on immunizations.
- Contact patients who miss appointments
- Identify patients who follow an alternative schedule.
- Recommend the HPV series starting at age 9.

# ALERT IIS Reminder/recall



<http://www.loc.gov/>

## ALERT IIS Reminder/recall

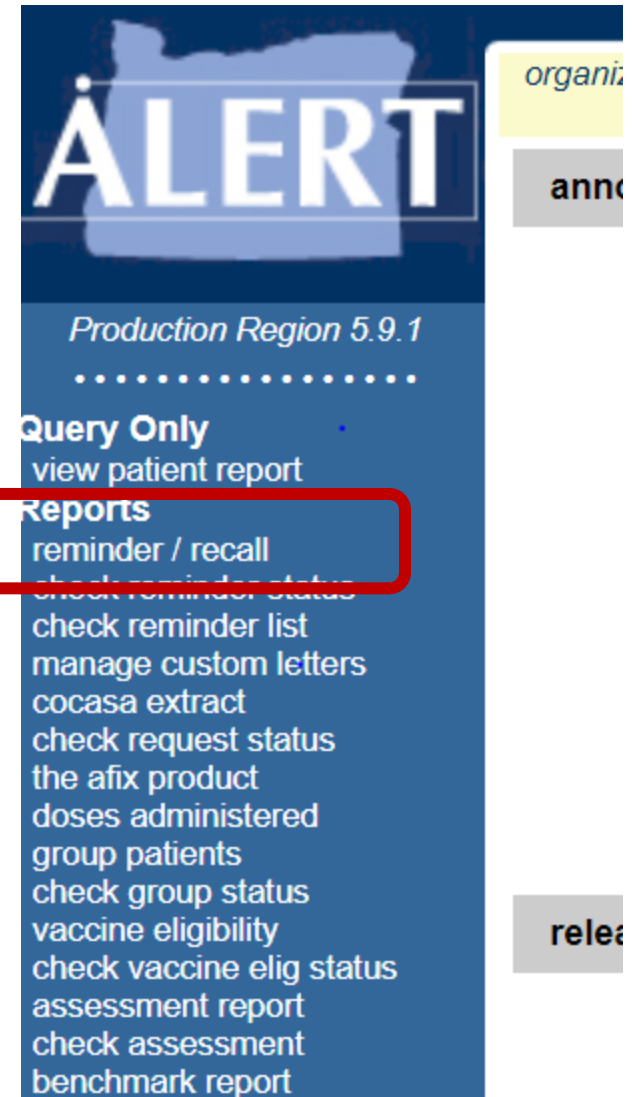
- Allows users to recall patients that need to come in for immunizations
- Recall at 13 months: ensure they don't fall behind
- Recall at 19 months: capture kids that haven't had all doses necessary in the second year of life

# ALERT IIS Reminder/recall workflow

Report name: [Reminder/recall](#)

The ALERT IIS reminder/recall report can highlight those patients (of any age) due or past due for a specified vaccine(s). This report can be run monthly and used to recall patients back into the clinic.

Tip sheet is available on the ALERT training page.





Production Region 4.1.1

**Patients**

- manage patient
- enter new patient
- merge patients
- upload list
- check roster status
- manage roster list

**Immunizations**

- manage immunizations

**Reports**

- reminder / recall
- check reminder status
- check reminder list
- manage custom letters
- cocasa extract
- check request status
- vaccine eligibility
- check vaccine elig status
- doses administered
- group patients
- check group status
- assessment report
- check assessment
- benchmark report
- check benchmark
- ad hoc list report
- ad hoc count report
- ad hoc report status
- billing report request
- check billing report
- provider report

**Reminder/Recall Request**

**Create New List ...**

- Enter new Reminder Recall Request Criteria  List Name
- Use a previous Reminder Recall Request Criteria

**Select Patient Population ...**

- Patients Associated with CLINIC 2 - SHELBY'S TEST CLINIC
- Patients Residing in Klamath County
- Patients Associated with CLINIC 2 - SHELBY'S TEST CLINIC or Residing in Klamath County

**Indicate the Tracking Schedule ...**

- Use Tracking Schedule Associated with Each Patient
- Use Tracking Schedule Selected for All Patients

**Select the Vaccine Group To Report on ...**

- Use All Vaccine Groups
- Use Vaccine Groups Selected
 

	▲
Adeno	▼
Anthrax	▼

Add
Remove
- Vaccines Due Now
- Vaccines Past Due
- Both

# ALERT IIS reminder/recall workflow

Narrowing your criteria and running the report monthly will make the process more manageable.

## Reminder Request Process Summary

Reminder Request Criteria Name: 13 MONTH OLDS

Step	Criteria Evaluated at this Step	Patients
1	Patients <b>associated</b> with <i>ERIN'S TEST CLINIC</i> .	41
2	Patients <b>immunized</b> by <i>ERIN'S TEST CLINIC</i> .	39
3	Patients that are <b>active</b> within <i>ERIN'S TEST CLINIC</i> and <b>allow Reminder &amp; Recall Contact</b> . Additional criteria includes: <ul style="list-style-type: none"><li>• Patients <b>born between 06/07/2012 and 06/08/2016</b>;</li><li>• <b>School</b> is not specified;</li><li>• <b>Provider</b> is not specified.</li></ul>	2
4	Patients that have a <b>Valid Address</b> . Additional criteria includes: <ul style="list-style-type: none"><li>• <b>City</b> is not specified;</li><li>• <b>Zip Code</b> is not specified.</li></ul>	1
5	Patients that meet the following criteria regarding vaccination status: <ul style="list-style-type: none"><li>• Patients that are <b>Due Now or Past Due</b> for one or more vaccinations <b>as of 06/08/2017</b>;</li><li>• Use all <b>vaccine groups</b>;</li><li>• Use <b>ACIP</b> for all patients.</li></ul>	1
<b>Total Number of Patients Eligible for Reminder</b>		<b>1</b>



# ALERT IIS reminder/recall workflow

This report offers a bevy or output options including mailing labels and Excel spreadsheet.

Reminder Request Output Options		
Output	Description	Additional Input
<a href="#">Reminder Letter</a>	Standard Reminder Letter.	Duplex Printing <input type="checkbox"/> Report Name <input type="text"/> Free Text <input type="text"/> Phone # <input type="text"/>
<a href="#">Reminder Card</a>	Standard Reminder Card (4x5).	Report Name <input type="text"/> Free Text <input type="text"/> Phone # <input type="text"/>
<a href="#">Mailing Labels</a>	Avery 5160 Mailing Labels.	Report Name <input type="text"/>
<a href="#">Patient Query Listing</a>	A list of patients based on the report criteria.	Report Name <input type="text"/>
<a href="#">Extract Client Data</a>	Extract client data in XML format.	Report Name <input type="text"/>

## Strategy 4

Increase knowledge and awareness about immunizations in clinics and for families

## What health care providers can do to increase awareness:

- Identify an immunization champion.
- Build a culture of immunization in the clinic.
- Make resources readily.
- Make a strong personal recommendation for immunizations at every encounter.

# Key resources



Centers for Disease  
Control and Prevention

CDC

<https://www.cdc.gov/vaccines>



BOOST Oregon

<http://www.boostoregon.org>



The Children's Hospital *of* Philadelphia

Children's Hospital of Philadelphia (CHOP)

<https://www.chop.edu>

immunization  
action coalition

**IAC**  
immunize.org

Immunization Action Coalition (IAC)

<https://www.immunize.org/>



American Academy of Pediatrics

<https://www.aap.org/>

Oregon  
**Health**  
Authority

So...which activities could improve immunization rates at YOUR clinic?

Please wait...



I'm thinking!

# IQIP team is here to support

- Lauren Enciso

[Lauren.Enciso@oha.oregon.gov](mailto:Lauren.Enciso@oha.oregon.gov)

- Sam McClean

[Samuel.McClean@oha.oregon.gov](mailto:Samuel.McClean@oha.oregon.gov)

- Albert Koroloff

[Albert.M.Koroloff@oha.oregon.gov](mailto:Albert.M.Koroloff@oha.oregon.gov)

# Oregon Health Authority

*thank  
you*

Oregon Immunization Program

1-800-980-9431

[imm.info@odhsoha.oregon.gov](mailto:imm.info@odhsoha.oregon.gov)