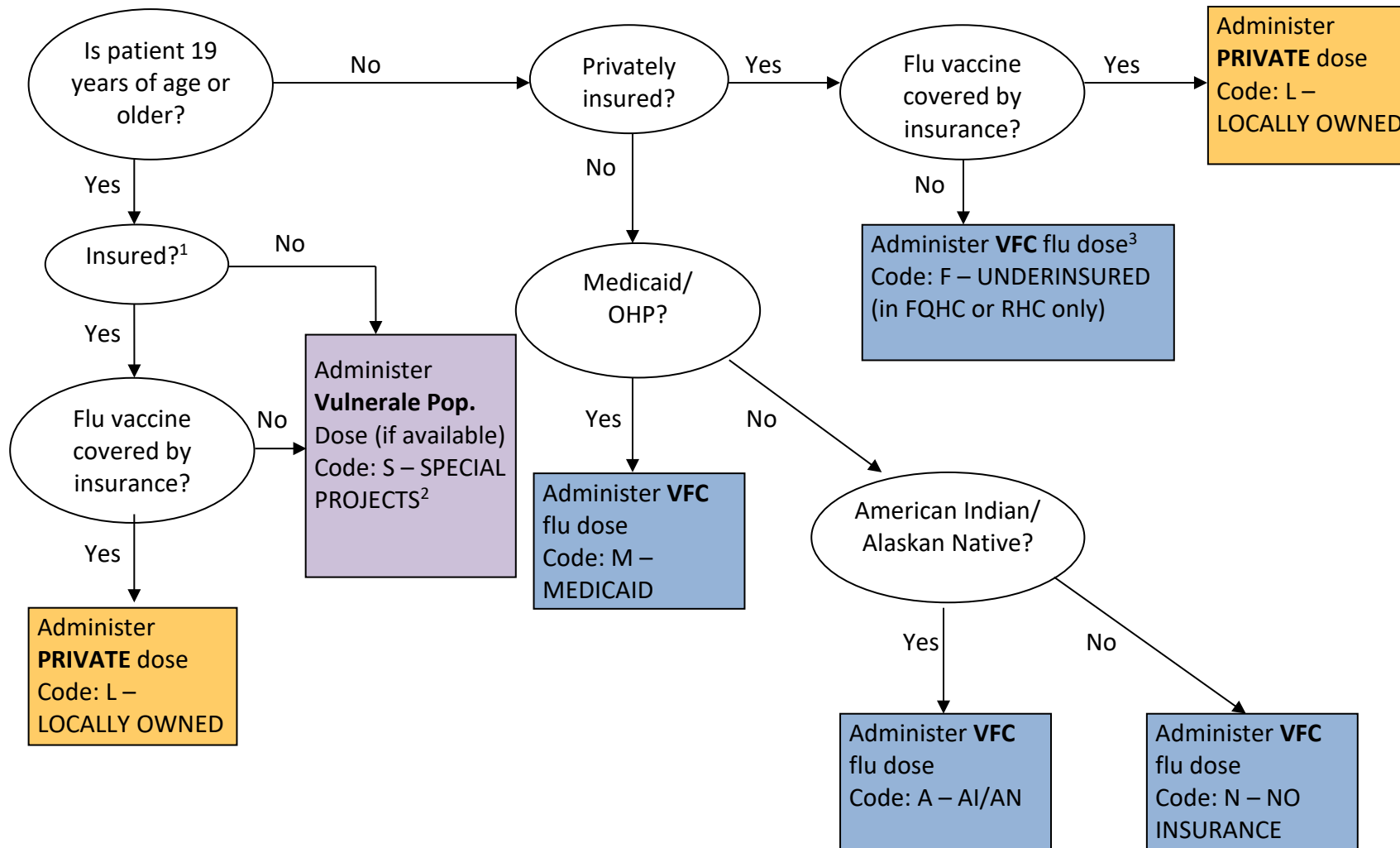


# Flu Vaccine Eligibility Flow Chart: Vaccine Access Clinics



<sup>1</sup> Including Medicare/Medicaid

<sup>2</sup> Request via Smartsheet survey. Use for specific outreach activities where screening is a barrier. Approval needed.

<sup>3</sup>VFC Flu Vaccine for eligible patients age 0-18 years only, requested through ALERT.

<b>Patient's Status</b>	<b>Vaccine Eligibility Code</b>	<b>Vaccine stock</b>
Adult or Child <ul style="list-style-type: none"> <li>Fully insured (includes adults on Medicaid and Medicare)</li> </ul>	L – Locally owned	Private/Locally Owned
Adult <ul style="list-style-type: none"> <li>No insurance</li> <li>Flu vaccine not covered under current insurance</li> <li>Outreach activities where screening is a barrier. OIP</li> <li>approval required.</li> </ul>	S – Special project	Flu Pool, if available
Child, insured but flu vaccine not covered	F – Underinsured	VFC
Child, uninsured	N – No insurance	VFC
Child, on Medicaid/OHP	M – Medicaid	VFC
Child, American Indian/Alaskan Native	A – AI/AN	VFC