

CAPO Response to Winter Warming

- ▶ *Three Hats/One Goal:
- ▶ What is a Community Action Agency?
- ▶ Emergency Shelter Funding and Philosophy

Jimmy Jones

MWVCAA - Executive Director

The logo is contained within a red rectangular box. It features the word "community" in a small, white, sans-serif font at the top. Below it, the word "Action" is written in a large, bold, white, italicized sans-serif font. Underneath "Action", the words "PARTNERSHIP" and "OF OREGON" are stacked in a smaller, white, all-caps, sans-serif font. At the bottom of the box, the tagline "Helping People. Changing Lives." is written in a white, italicized sans-serif font.

community
Action[®]
PARTNERSHIP
OF OREGON
Helping People. Changing Lives.



Mid-Willamette Valley

COMMUNITY ACTION

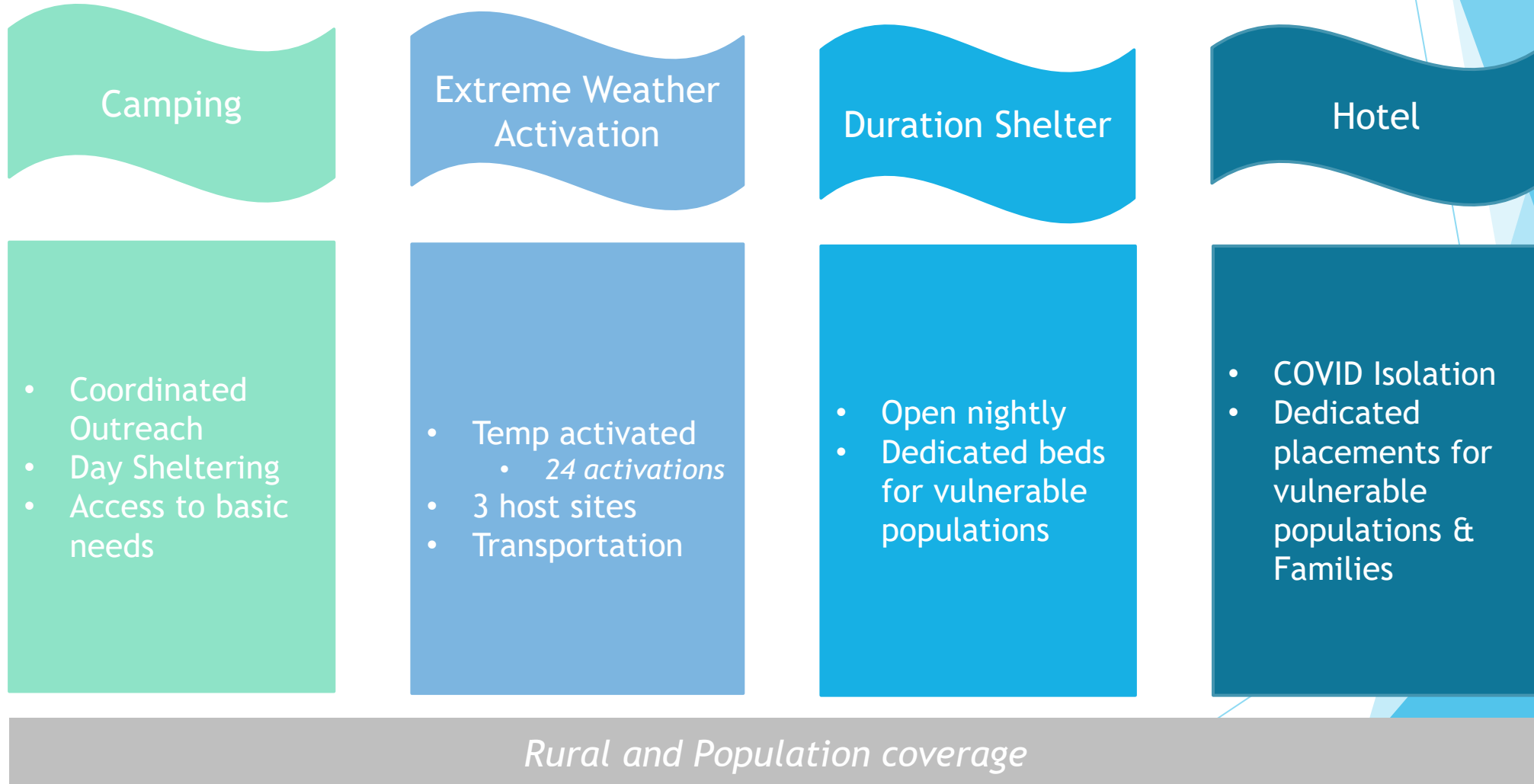
The ARCHES Project

2020-2021 Emergency Shelter

Mission: To save lives

*Ashley Hamilton
MWVCAA - Program Director*

A Shelter Continuum



A Deeper Dive into the Continuum

Camping

- Effective marketing
- Field triage
- Expanded DC hrs
- OHA, ESG CV, ESG

Extreme Weather Activation

- 24 activations @ 149 capacity
- 3,351 bed nights
- Volunteer heavy - 620 hours
- Flexible response
- COVID procedures
- OOTC, SHAP, CDBG

Duration Shelter

- January - March
- 25 capacity
- 1,034 bed nights
- Full time FTE
- COVID procedures
- COS, OOTC, CARES

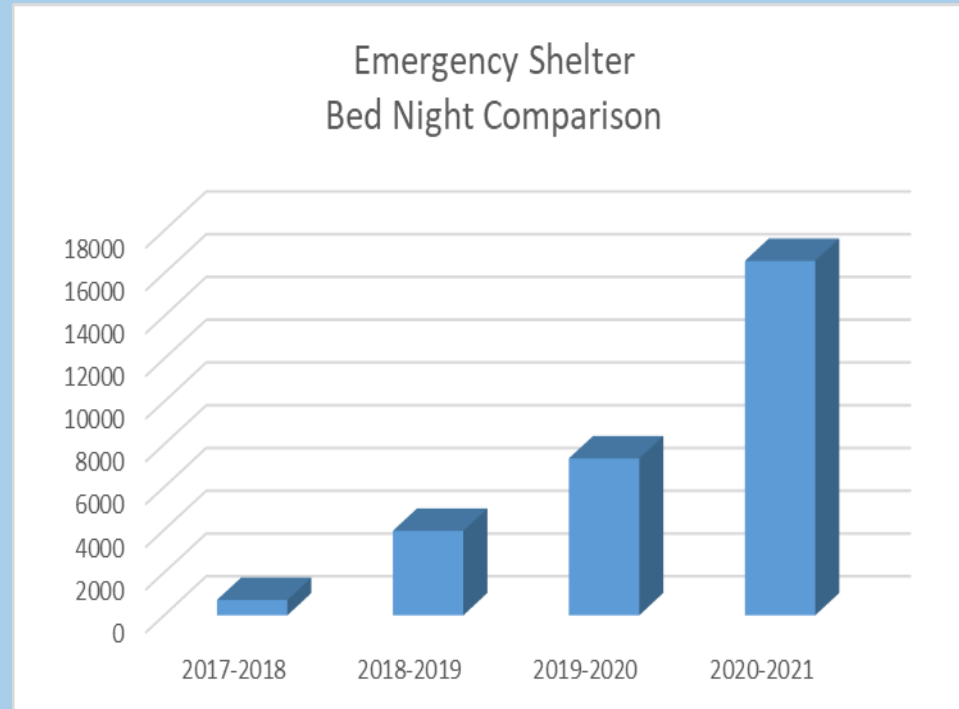
Hotel

- Non-congregate
- 12,199 Bed nights
- Full time FTE
- Wrap around supports - Outreach & CM
- OOTC, ESG/CV, SHAP, COS, CCO

*Rural communities: \$150,000 OOTC and CARES investments
CSO: Direct referrals into hotel/non-congregate*

16,584 Bed Nights

Serving 636 individuals





LET'S SAVE LIVES

HELP US OPEN WARMING SHELTERS WHEN NIGHTS ARE COLD

1/22/2021

overnight lows are expected to be cold. We need volunteers to open overnight warming shelters.

**SIGN UP AT
ARCHES.VOLUNTEERHUB.COM**

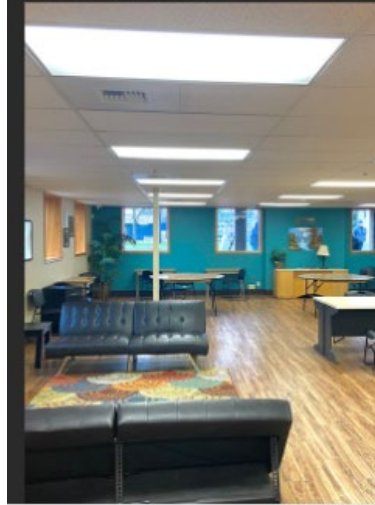


WARMING CENTER OPEN TONIGHT

FIRST PRESBYTERIAN CHURCH
770 CHEMEKETA STREET

FEBRUARY 11, 2021 | 7PM-7AM

VOLUNTEERS STILL NEEDED FOR 3RD SHIFT TONIGHT AND TO FILL SHIFTS THE REST OF THE WEEK. PLEASE VISIT [ARCHES.VOLUNTEERHUB.COM](https://arches.volunteerhub.com) TO SIGN UP



SPECIAL DAY CENTER HOURS

815 COMMERCIAL ST. NE

THURSDAY: 7:30AM-1:00PM
FRIDAY: 7:30AM-4:00PM
SATURDAY: 7:30AM-12:00PM
SUNDAY: 7:30AM-12:00PM

LUNCH PROVIDED AT NOON

VOLUNTEER OPPORTUNITIES AVAILABLE AT [ARCHES.VOLUNTEERHUB.COM](https://arches.volunteerhub.com)



WE NEED MORE VOLUNTEERS!

ACTIVATION TONIGHT!

PLEASE SIGN UP AT
[ARCHES.VOLUNTEERHUB.COM](https://arches.volunteerhub.com)

Winter Warming 2021 - 2022 Season

Camping

- Coordinated Outreach
- Day Sheltering
- Access to basic needs

Extreme Weather Activation

- Temp activated
- Increase capacity
- 3 host sites
- FTE only
- Transportation

Hotel

- COVID Isolation
- CSO direct placement
- Families

Dedicated Shelter

- Project Turnkey
- Medically Fragile
- Wrap around supports

Rural and Population coverage