

# Long-Term Recovery Groups

Karen Layng

Oregon Office of Emergency Management

State Voluntary Agency Liaison

[Karen.layng@state.or.us](mailto:Karen.layng@state.or.us)

971-719-0865 (work cell)

## Initial Recovery Phase

- Shelter Operations
- Commodity Distribution
- Feeding
- FEMA IHP Registration

## Short Term



## Interim Recovery

- Debris Mission
- FEMA & SBA Disaster Programs
- Temporary and Interim Housing
- Long Term Recovery Committees
- Disaster Case Management
- Community Recovery Planning
- Federal Project Funding

## Intermediate



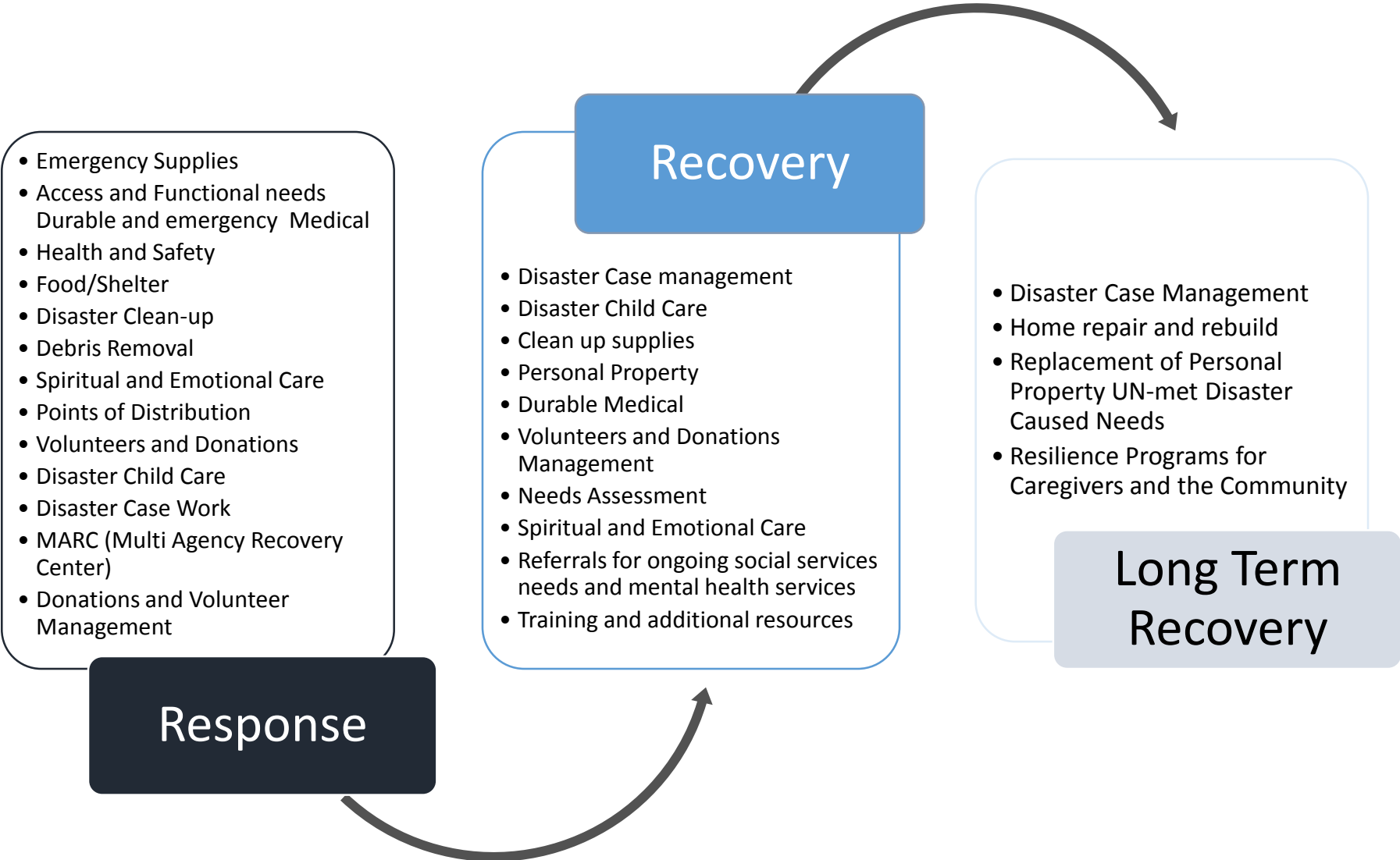
## Long Term

## Long Term

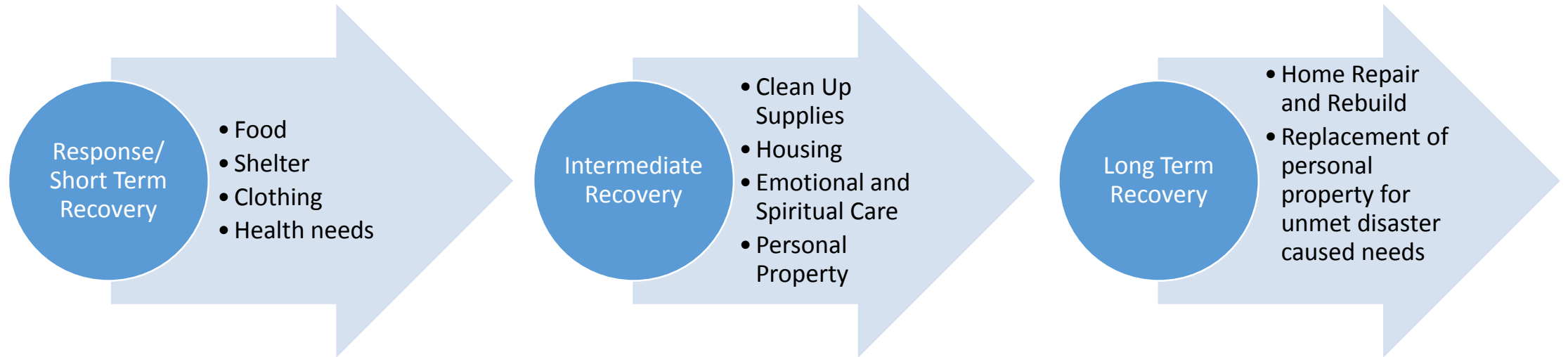
- Community Recovery Plan Execution
- Permanent Housing Solutions
- Project Execution and Completion
- Rebuilding Resilient Infrastructure

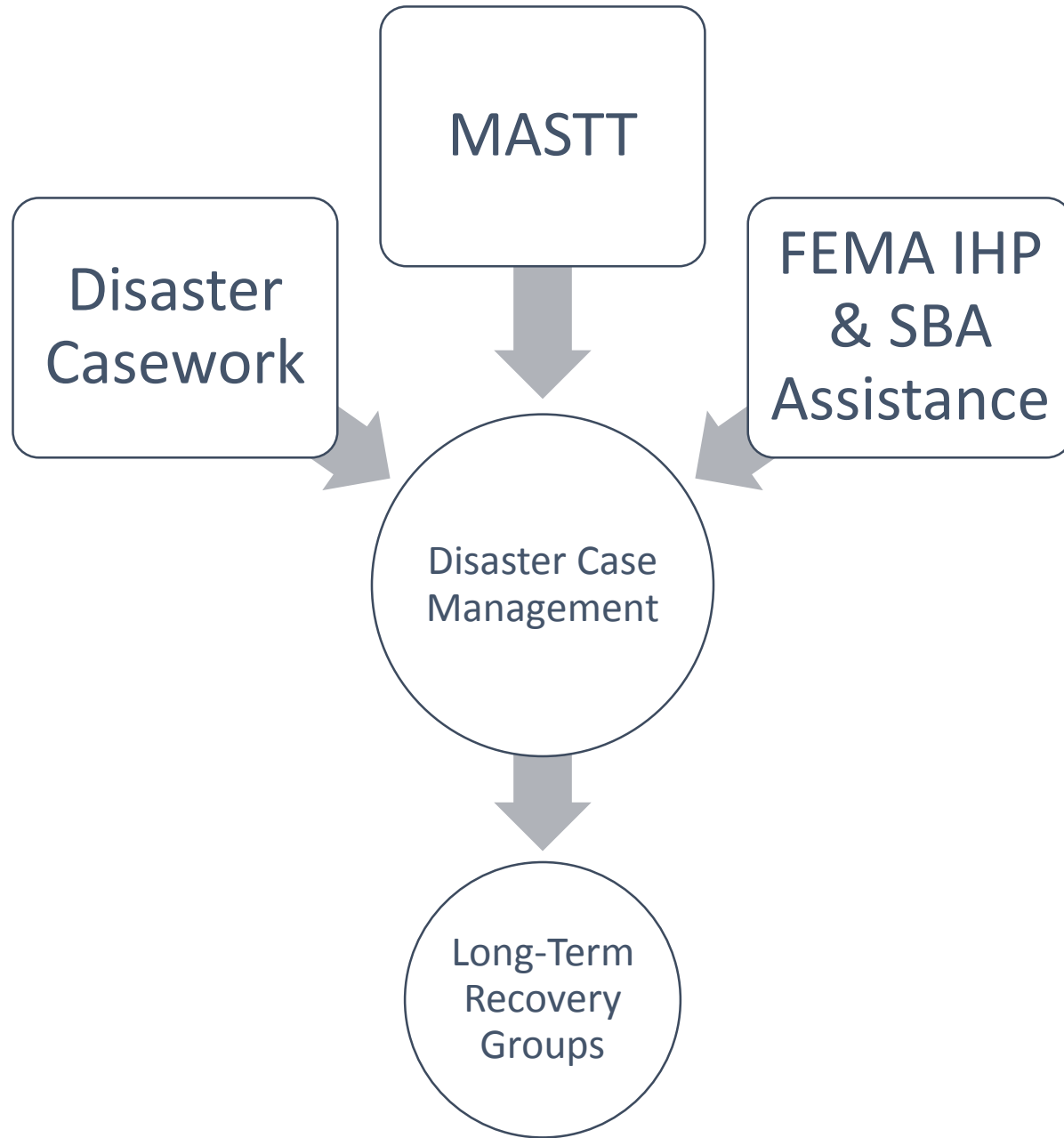


# Voluntary Agency Services Timeline

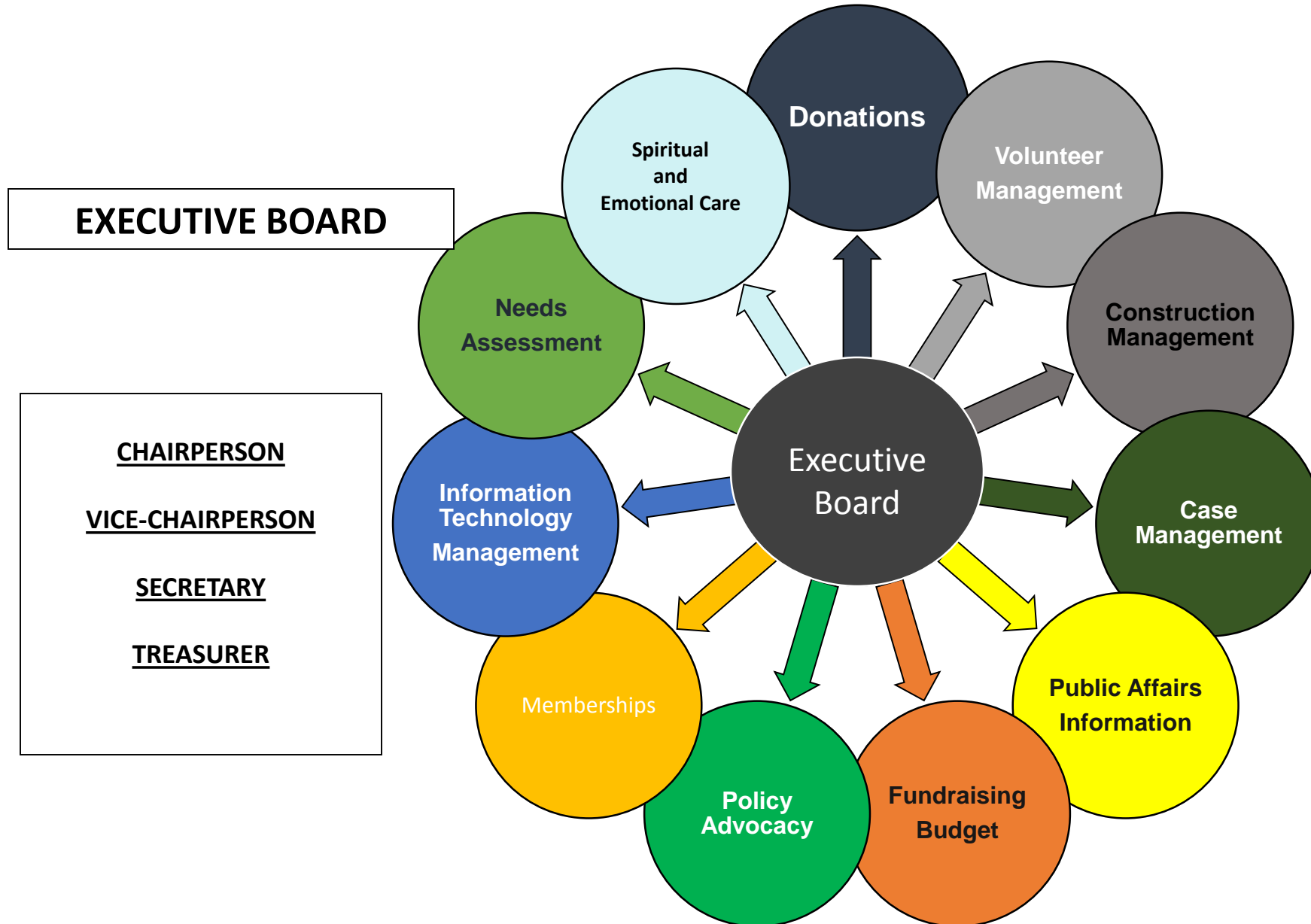


# Survivor Recovery Path





# Long Term Recovery Group Structure/Functions



# Long-Term Recovery Group Levels of Development

Phase	STRUCTURE	CAPABILITIES	ACTIVITIES	PARTICIPATION	RESOURCES
<b>Emerging</b>	No structure yet may have a facilitator to lead meetings until leaders are identified	Individual members may have capacity to handle some emergency unmet needs  Capacity building	Organizing a diverse group of partners to determine how to best work together	Local non-profits, business community, State, Local, and possibly FEMA, Faith based groups	FEMA State Local Experts
<b>Developing</b>	Leaders exploring structure and functions, developing bylaws and mission statement, and exploring fiduciary responsibilities	Individual members may have capacity to handle some emergency unmet need	Developing bylaws and mission statement  Training for members in case management, volunteer management, and construction management  Possible needs assessment activity	Local non-profits and business community, State and local governments, FEMA, Faith-based groups	FEMA State Local Experts
<b>Operational</b>	Leaders Functions Bylaws Plan of Operations Mission Statement	Case management in place and is able to handle referral of clients	Case Management and Beginning construction and recovery	Local non-profits, business community, State, Local, and Faith based groups  FEMA presence is by invitation	State Local Experts