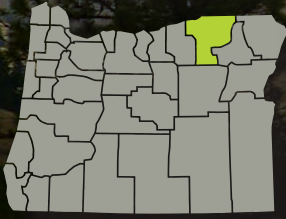


Investments in Umatilla County



Oregon Watershed Enhancement Board (OWEB) mission:
To help protect and restore healthy watersheds and natural habitats that support thriving communities and strong economies.



Since 1999, OWEB has awarded nearly **\$17.22 million in grants Umatilla County.**

County Accomplishments

Restoration and improvements accomplished:



53 instream and riparian habitat miles treated
6,807 statewide



413 miles of fish passage made accessible
7,224 statewide



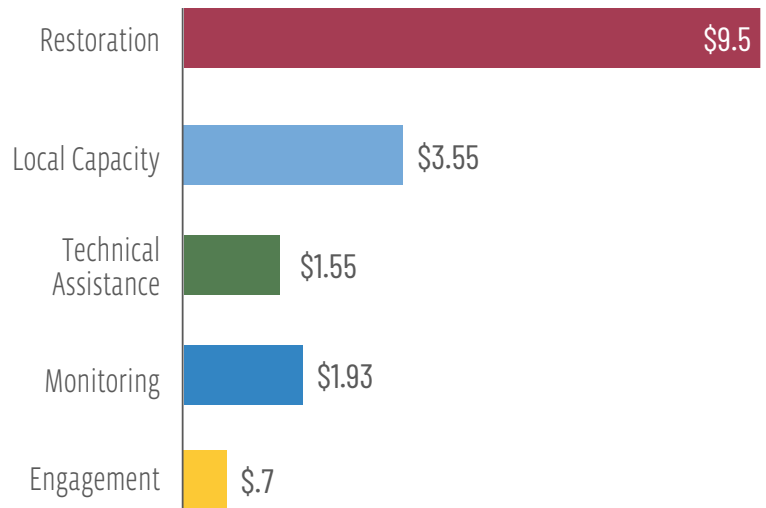
68,317 upland habitat acres improved
1,469,606 statewide



256 wetland or estuarine habitat acres created or restored
61,500 statewide

County Grant Awards by Project Type

(All Fund Sources Statewide, 1999-2023: **\$837.4 million**)
Numbers below are in millions of dollars:



Local Economies and Communities Benefit

OWEB funds are used to pay those who design and implement projects, hire field crews, and buy goods and services they need to get the job done.



= 15 - 24 local jobs

According to a University of Oregon study, every \$1 million of OWEB investments creates 15-24 jobs in local communities across Oregon.



90¢ of each \$1 supports local economies

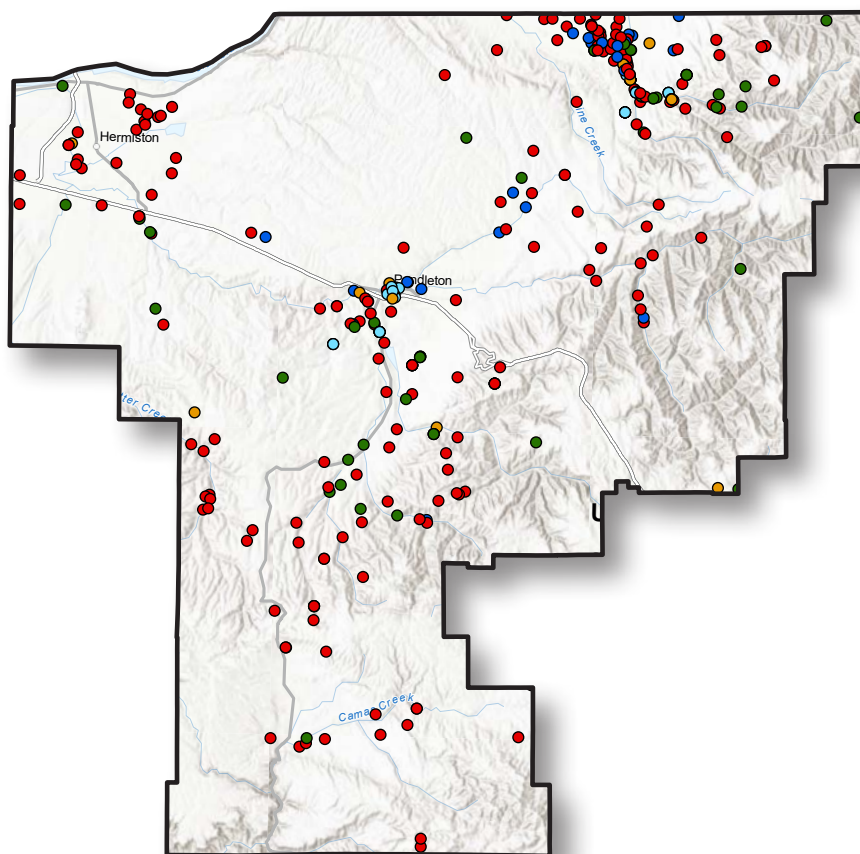
On average, more than 90¢ of every OWEB grant dollar supports local businesses, services, and suppliers within Oregon.

About OWEB

The Oregon Watershed Enhancement Board cares about and invests in the long-term health of Oregon's watersheds, both on the land and in the water that flows through it. Together with local partners across the state of Oregon, we invest funds from Lottery, General Fund, federal Pacific Coastal Salmon Recovery Fund, Salmon License Plates, and other sources in local communities. These funds help protect and restore healthy watersheds and natural habitats that support thriving communities and strong economies. Through all of our work, we are dedicated to the belief that:

- Healthy watersheds sustain healthy communities.
- Every Oregonian plays a role in the health of our watersheds.
- It takes broad partnership to support resilient watersheds.
- Improving our watersheds requires taking the long view.

Projects in Umatilla County by Type, 1999–2023



Umatilla County

OWEB Grant Project Types

- Red dot: Restoration
- Green dot: Acquisitions
- Light blue dot: Local Capacity
- Dark green dot: Technical Assistance
- Blue dot: Monitoring
- Yellow dot: Engagement

Map: Esri, NASA, NGA, USGS, Oregon Metro, Oregon State Parks, State of Oregon GEO, Esri, HERE, Garmin, SafeGraph, FAO, METI/NASA, USGS, Bureau of Land Management, EPA, NPS

Contact

Eric Hartstein, Senior Policy Coordinator
503-910-6201, eric.hartstein@oweb.oregon.gov
775 Summer Street NE #360, Salem OR 97301, 503-986-0178

www.oregon.gov/oweb

