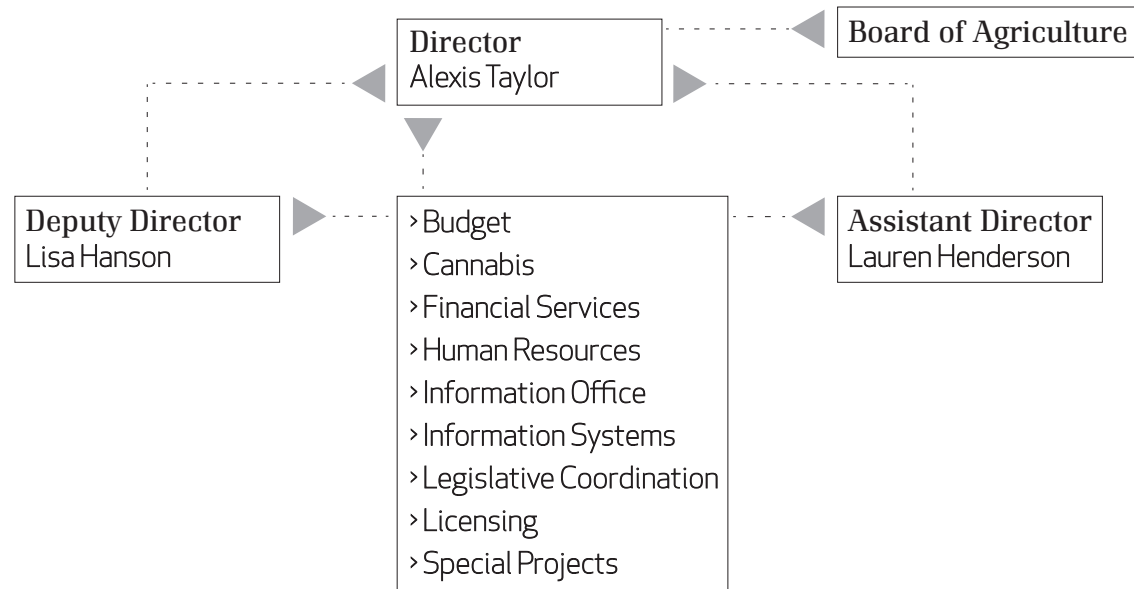


# Oregon Department of Agriculture

## Organizational Chart



Program Area Director Casey Prentiss (Interim)	Program Area Director Isaak Stapleton	Program Area Director Stephanie Page	Program Area Director Helmuth Rogg	Program Area Director Jason Barber
<b>Market Access &amp; Certification Programs</b>	<b>Food Safety &amp; Animal Health Programs</b>	<b>Natural Resource Programs</b>	<b>Plant Protection &amp; Conservation Programs</b>	<b>Internal Service &amp; Consumer Protection Programs</b>
<ul style="list-style-type: none"> <li>&gt; Agricultural Development &amp; Marketing</li> <li>&gt; Certification Services</li> <li>&gt; Commodity Commissions Oversight</li> <li>&gt; Commodity Inspection</li> <li>&gt; Farm to School Program</li> <li>&gt; Plant Health Lab</li> <li>&gt; Seed Program</li> <li>&gt; Shipping Point Inspection</li> <li>&gt; Specialty Crop Block Grant Program</li> </ul>	<ul style="list-style-type: none"> <li>&gt; Animal Health &amp; Lab</li> <li>&gt; Animal Identification</li> <li>&gt; Commercial Animal Feeds</li> <li>&gt; Food Safety</li> <li>&gt; Shellfish Biototoxin Testing</li> <li>&gt; Shellfish Plat Leasing</li> <li>&gt; State Veterinarian</li> </ul>	<ul style="list-style-type: none"> <li>&gt; Agricultural Water Quality</li> <li>&gt; Confined Animal Feeding Operations</li> <li>&gt; GIS Mapping</li> <li>&gt; Land Use</li> <li>&gt; Pesticide Analytical &amp; Response Center</li> <li>&gt; Pesticide &amp; Fertilizer Programs</li> <li>&gt; Smoke Management</li> <li>&gt; Soil &amp; Water Conservation Districts Program</li> </ul>	<ul style="list-style-type: none"> <li>&gt; Industrial Hemp</li> <li>&gt; Insect Pest Prevention &amp; Management</li> <li>&gt; Noxious Weed Program</li> <li>&gt; Nursery &amp; Christmas Tree Program</li> <li>&gt; Nursery Research Grant Program</li> <li>&gt; Native Plant Conservation</li> </ul>	<ul style="list-style-type: none"> <li>&gt; Egg Laying Hens</li> <li>&gt; Fleet Management</li> <li>&gt; Laboratory Services</li> <li>&gt; Metrology Lab</li> <li>&gt; Motor Fuel Quality</li> <li>&gt; Procurement</li> <li>&gt; Weights &amp; Measures</li> <li>&gt; Wolf Compensation</li> </ul>