

FRAMEWORK STEWARDSHIP

THERESA BURCSU

FRAMEWORK COORDINATOR

OSCIO GEOSPATIAL ENTERPRISE OFFICE



ACKNOWLEDGEMENTS

- Past work by the Stewardship Workgroup
- Work by the stewardship breakout group in September led by Lowell Anthony
- Work completed by Peter Crosswell in the early 2000s

BASIC PRINCIPLES

- Geospatial data is a valuable, long-term asset
- Processes supporting data stewardship should be clear, inclusive, and well-documented
- Policies, procedures, and technical processes for data update should be well-documented and widely communicated

DATA STEWARDSHIP DEFINED

Data stewardship is an approach to data governance that formalizes accountability for managing information resources on behalf of others and for the best interests of the organization.

Danette McGilvray in *Executing Data Quality Projects* (2008)

DATA STEWARDSHIP DEFINED

Willingness to be accountable for a set of business information for the well-being of the larger organization, by operating in service, rather than in control, of those around us.

Larry English in *Information Stewardship—
Giving IQ and Happiness* (2006)

DATA STEWARDSHIP DEFINED

Data stewardship denotes an approach to the management of data, particularly data that can identify individuals. The concept of a data steward is intended to convey a fiduciary (or trust) level of responsibility toward the data.

S. Rosenbaum (2010)

DATA STEWARDSHIP KEY PRINCIPLES

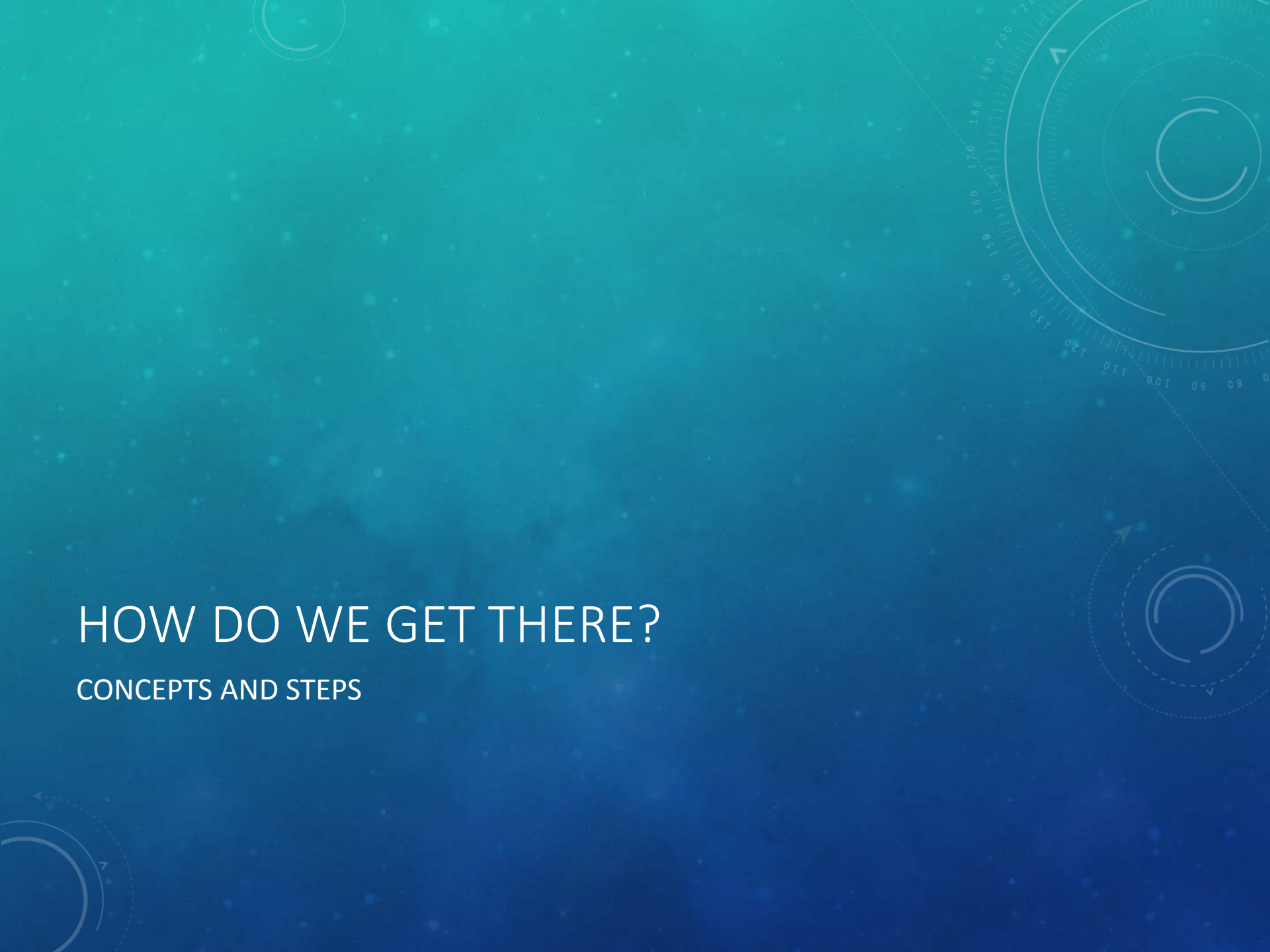
- Trust
- Working on behalf of the Framework community
- Accountability
- Responsibility
- Data management
- Communication

DATA STEWARDSHIP BENEFITS

- Improves efficiency
- Maintains data quality and utility
- Defines and distributes the work on an element and theme basis
- Provides evidence of accomplishments

HOW DO WE GET THERE?

CONCEPTS AND STEPS

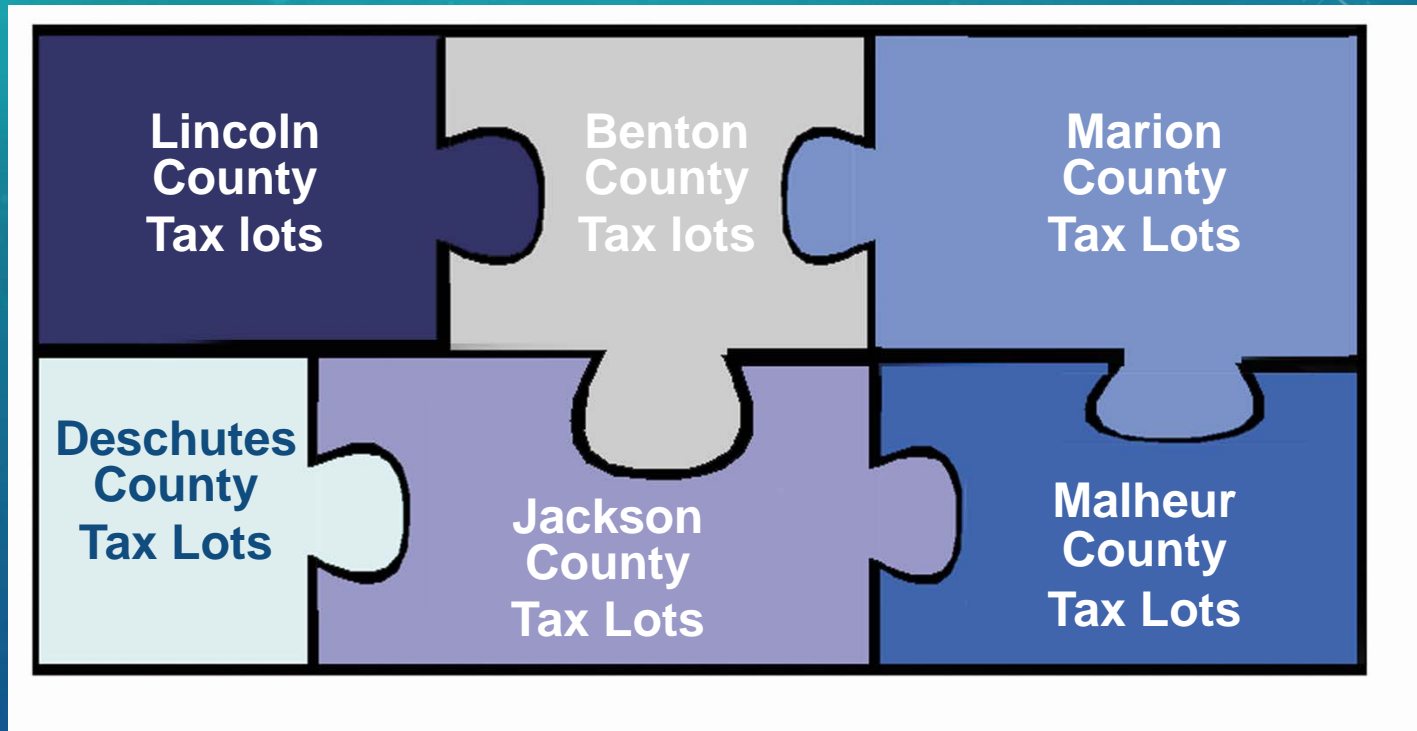


FRAMEWORK STEWARDSHIP

THREE MAJOR ROLES

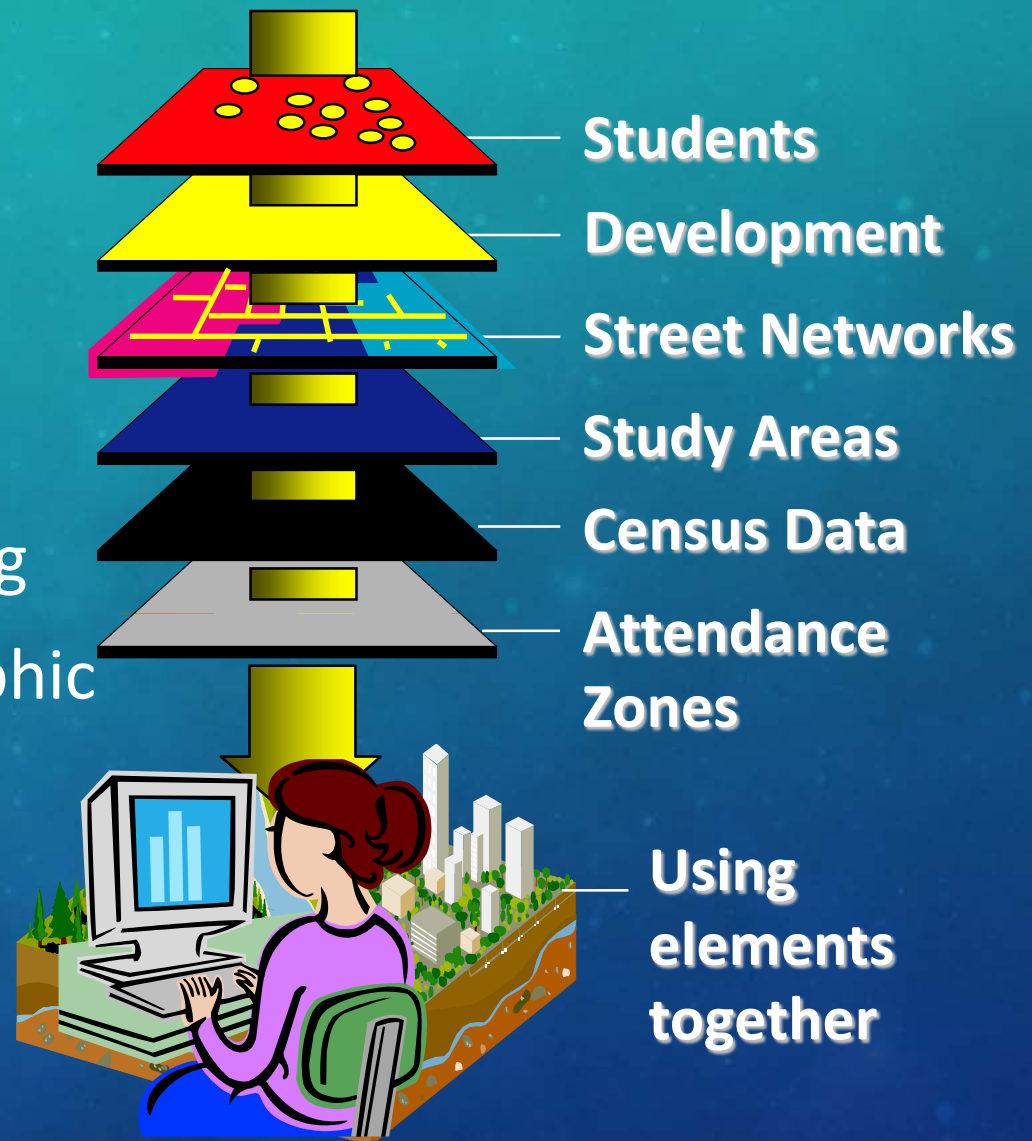
1. Custodial stewards create spatial data
2. Horizontal stewards integrate chunks of data contributed by custodial stewards into statewide datasets (Framework)
3. Vertical stewards assures spatial registration and harmonious database models among Framework datasets

HORIZONTAL INTEGRATION

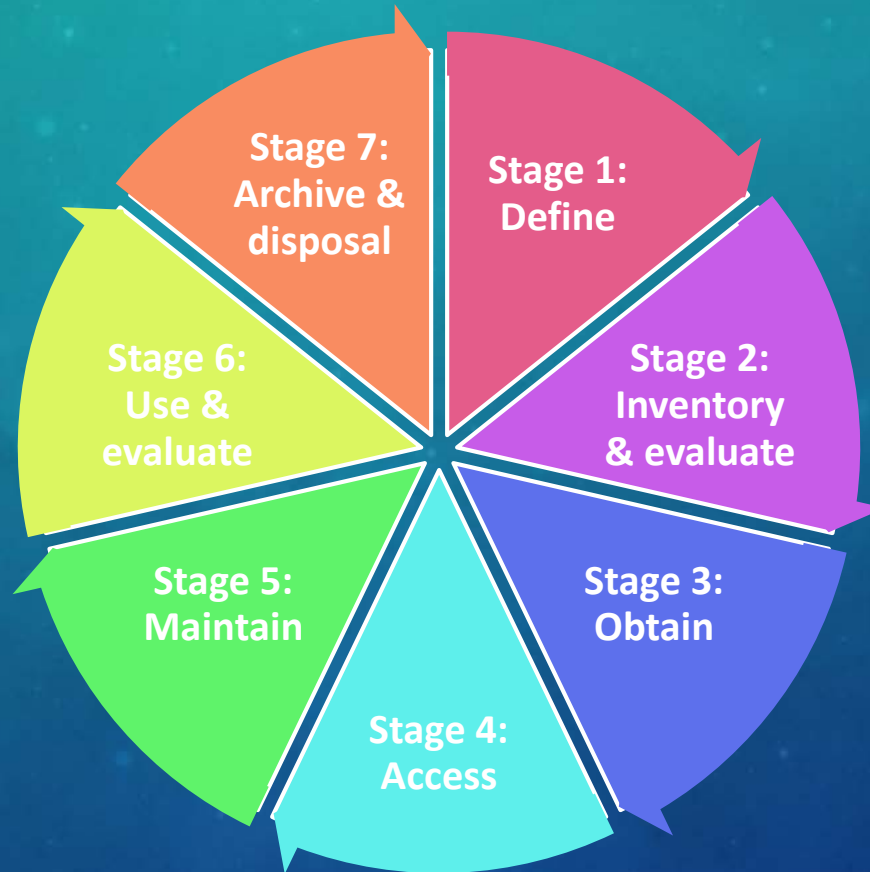


VERTICAL INTEGRATION

- Siting new facilities
- Enrollment forecasting
- Long-range demographic planning
- School redistricting



DATA LIFE CYCLE



Data stewardship

Data standards

STEWARDSHIP: WHAT'S INVOLVED?

1. Establish a *steward group*
2. Determine level of stewardship
3. Adopt a charter
4. Write a stewardship plan
5. Develop and document workflow processes
 - standard operating procedures (SOPs)
6. Provide feedback to FIT
 - to improve stewardship guidance and implementation

STEWARDSHIP

STEWARDSHIP CLASSES

- The Stewardship Workgroup recommended three classes of stewardship for Framework elements:
 - Class A: high degree of formality
 - Class B: moderate degree of formality
 - Class C: low degree of formality

STEWARDSHIP CLASSES

- “Formality” refers to documentation:
 - Stewardship Charter
 - Stewardship Plan
 - Standard Operating Procedures
 - Business Rules

STEWARDSHIP CLASSES

Documentation	Class A	Class B	Class C
Charter	multi-party	few parties	one party
Plan	complex	less complex	simple
SOP	required	required	recommended
Business Rules	framework	steward group	internal

STEWARDSHIP CHARTER: PURPOSE

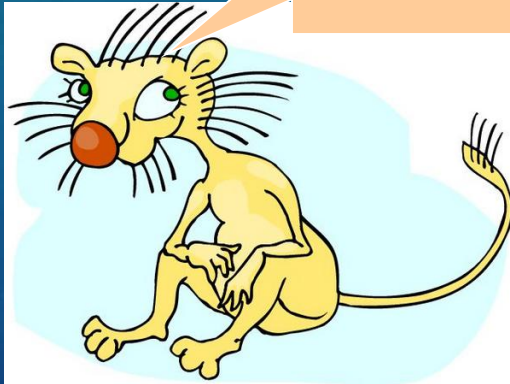
- Provides for the accountable, thorough, and documented stewardship of each Framework element.



Stewardship Charter: Objective

Properly **maintain**, **distribute** and **provide** appropriate access to a current framework element **indefinitely**, as well as create and maintain **metadata** conforming to or exceeding current applicable standards.

I have four feet and fur too.
We must be cousins.



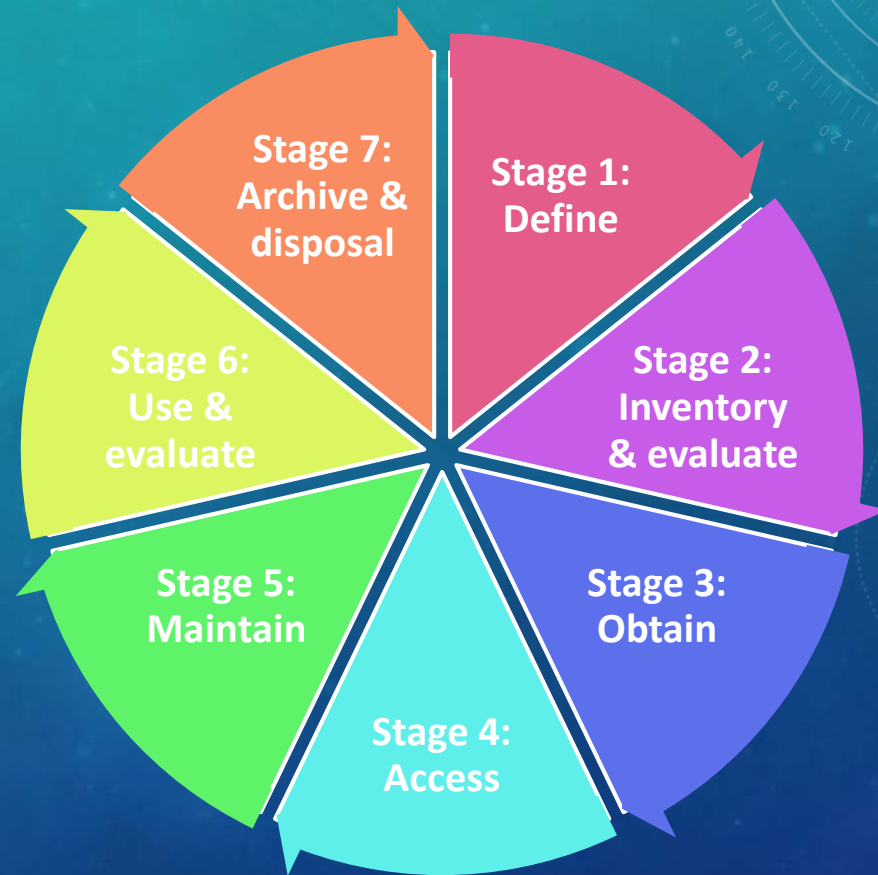
Read all the
metadata!

I'm not a mouse.



Stewardship Charter: Scope

The entire data
lifecycle for each
framework
element



RESOURCES

<http://gis.oregon.gov>

Theresa Burcsu, Framework Coordinator

503-378-3157

Theresa.burcsu@Oregon.gov

DISCUSSION

- What are good, working examples of stewardship? Why are they “good”?
- Why do you feel stewardship is important?
- Is there anything missing from the definitions and concepts presented today?
- What other information do you need?