

# EMERALD ASH BORER QUARANTINE

ORS 603-052-1075



OREGON DEPARTMENT OF AGRICULTURE



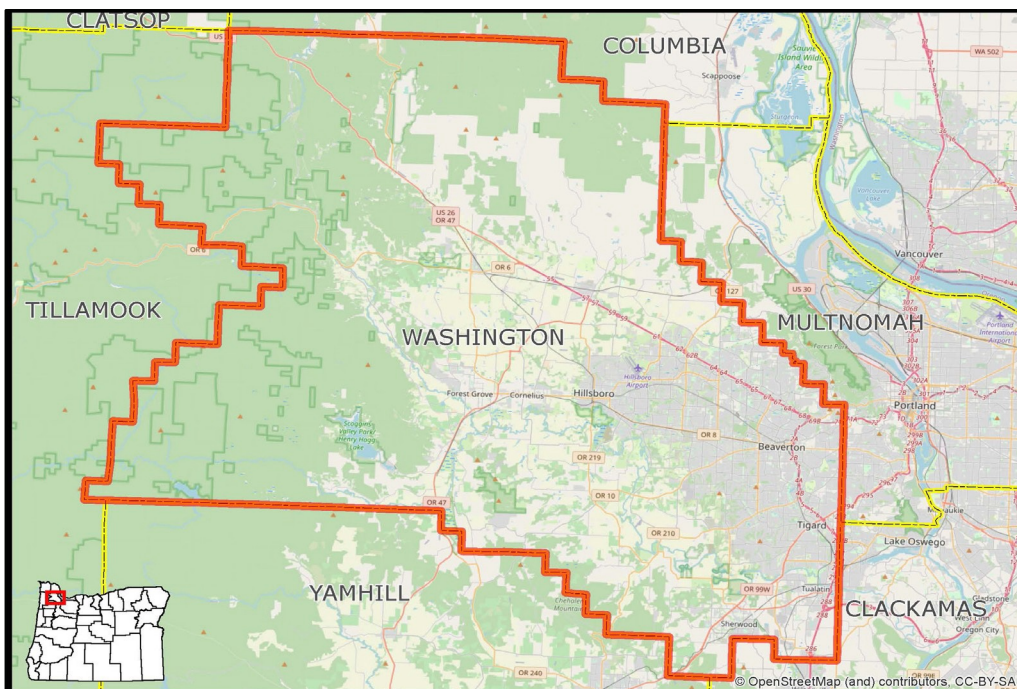
All ash, olive, and white fringe trees, must remain within Washington County. Nurseries or other groups who wish to sell, ship, or move these plants outside of the quarantine area must enter an agreement with the Nursery & Christmas Tree Program

## EMERALD ASH BORER QUARANTINE BOUNDARIES

2024: WASHINGTON COUNTY, OREGON



Actual Size  
1/2 inch



### Quarantined ash, olive, & white fringe tree materials

- Nursery stock
- Scion wood
- Bud wood
- Roots and branches



### Quarantine Exceptions

Nurseries or other groups who have a signed agreement with the ODA Nursery & Christmas Tree Program

Plant material is eligible to enter the agreement if it meets one of the following conditions:

- Diameter at the base of the plants is less than 0.75 inches.
- Plants were grown in a screenhouse approved by the ODA
- Plants have been properly treated with an approved insecticide

Example compliance agreement:

[oda.direct/EABComplianceAgreement](https://oda.direct/EABComplianceAgreement)

Washington County, Oregon is now under a quarantine due to the presence of EAB, a destructive pest that targets ash, olive, and white fringe tree. Quarantine applies to all of Washington County, including federal, state, commercial, and private lands.

To learn more about Oregon's response plan, please visit the IPPM EAB page here:

[oda.direct/IPPM\\_EAB](https://oda.direct/IPPM_EAB)



For more information please visit [www.OregonEAB.com](https://www.OregonEAB.com).

To subscribe to the EAB email list visit [ODA.FYI/subscribe](https://ODA.FYI/subscribe)

For questions please email us at [EAB@oda.oregon.gov](mailto:EAB@oda.oregon.gov) or call 503-986-4636

Oregon Department of Agriculture • 635 Capitol St NE, Salem, OR 97301 • 1-800-525-0137

# EMERALD ASH BORER (EAB) QUARANTINE



**OREGON  
DEPARTMENT OF  
AGRICULTURE**

## EAB Quarantine

### Frequently Asked Questions

Provided by Oregon Department of Agriculture (ODA),  
Nursery & Christmas Tree program.

#### Can host material be moved within the quarantine boundaries?

Movement of EAB hosts within the quarantine area is permitted. Ash, olive, and white fringe trees from the quarantine area can be sold, given away, or planted, as long as they remain within the quarantine boundaries.

#### What do nurseries need to do if they want to sell host material just inside Washington County?

Train staff to identify signs of EAB presence and report any sightings to the ODA. Communicate clearly to the purchaser that host plants are required to remain within the quarantine boundaries. Inspect EAB host plants prior to moving them within the quarantine zone. Inspect mother trees or other large host trees on the property..

#### What is a quarantine? What are the consequences for not adhering to the quarantine?

Quarantine is the legal enforcement of actions that help slow the spread of pests to new areas or that prevent them from multiplying where they have already gained entry. For this reason, ODA is implementing a temporary EAB quarantine as per Oregon Administrative Rule (OAR 603-052-0135). Non-compliance will result in the spread of EAB and civil penalties of up to \$10,000 as provided by ORS 570.995

### Ash Tree ID

- Compound leaves with 5-11 leaflets
- Unstaggered opposite branching
- Diamond shape bark pattern
- Seeds are oar-shaped samaras



**Oregon Ash leaf**  
Photo: Jordon Bartosz

## Signs & Symptoms of EAB

- Crown dieback in heavily infested trees
- D-shaped emergence holes in bark about 0.118 inch (3mm) in size.
- Sucker shoots emerging from trunk
- S-shaped galleries underneath the bark
- Bark splitting found on trunk or branches
- Woodpecker activity
- The tree is dying from top down



D-shaped emergence hole



Bark splitting



S-shaped galleries

## Processing and Disposal Resources

For a list of businesses that can aid in removing, processing, and disposing of quarantined wood materials, please visit:  
[ODA.direct/EAB](http://ODA.direct/EAB)

For more information please visit [www.OregonEAB.com](http://www.OregonEAB.com)

To subscribe to the EAB email list visit [ODA.FYI/subscribe](http://ODA.FYI/subscribe)

For questions please email us at [EAB@oda.oregon.gov](mailto:EAB@oda.oregon.gov) or call 503-986-4636

Oregon Department of Agriculture • 635 Capitol St NE, Salem, OR 97301 • 1-800-525-0137