

Patient Centered Primary Care Home
Standards
Pediatric Advisory Committee

Meeting #1

Thursday, August 19th

1:00-3:00pm

Portland State Office Building

Goals for Meeting #1

- Review Patient Centered Primary Care Home Standards Development Process
- Approve Committee Charter
- Discuss and, if necessary, refine PCPCH Core Attribute #1: Access to Care
- Discuss and, if necessary, refine PCPCH Core Attribute #2:

Standards and Measures for Patient Centered Primary Care Homes

Why Primary Care Homes?

Goals of the Oregon Health Fund Board & HB 2009

- Improve individual and population health outcomes
- Reduce inappropriate utilization
- Reduce health system costs costs
- Strengthen primary care
- Encourage prevention and chronic disease management over acute, episodic care
- Stimulate delivery system change

“Right care at the right time and in the right place”

How is a Primary Care Home Different?

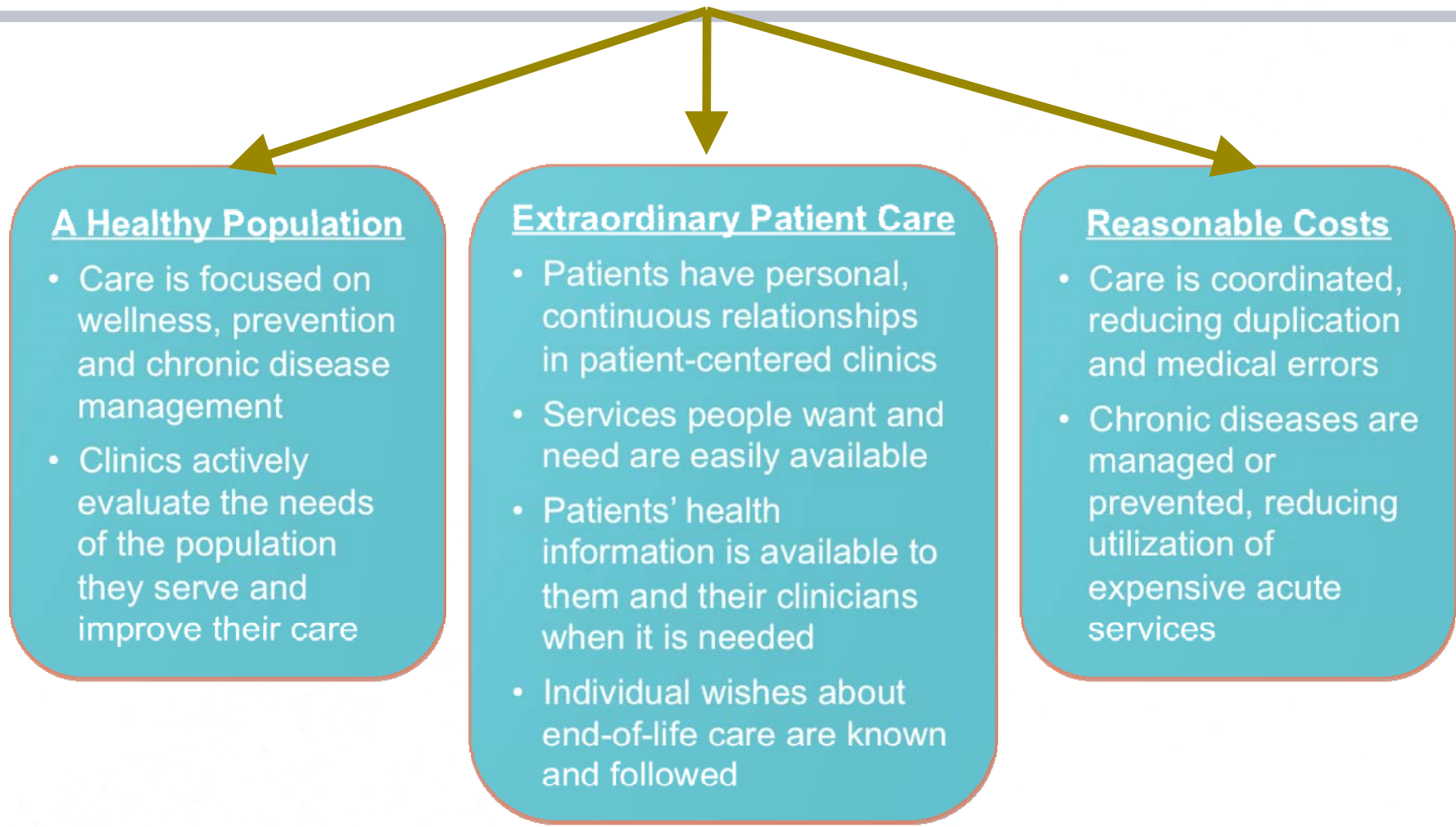
Status Quo Care

- Access options limited
- Fragmented episodic care
- Uncoordinated
- Multiple providers/locations
- Rewards for volume
- Responsive to needs of providers

Primary Care Home

- Access options meet patient needs
- Continuous relationships
- Coordinated across the system
- One-stop shopping
- Rewards for quality and value
- Responsive to needs of patients and families

Improving “Triple Aim” Outcomes

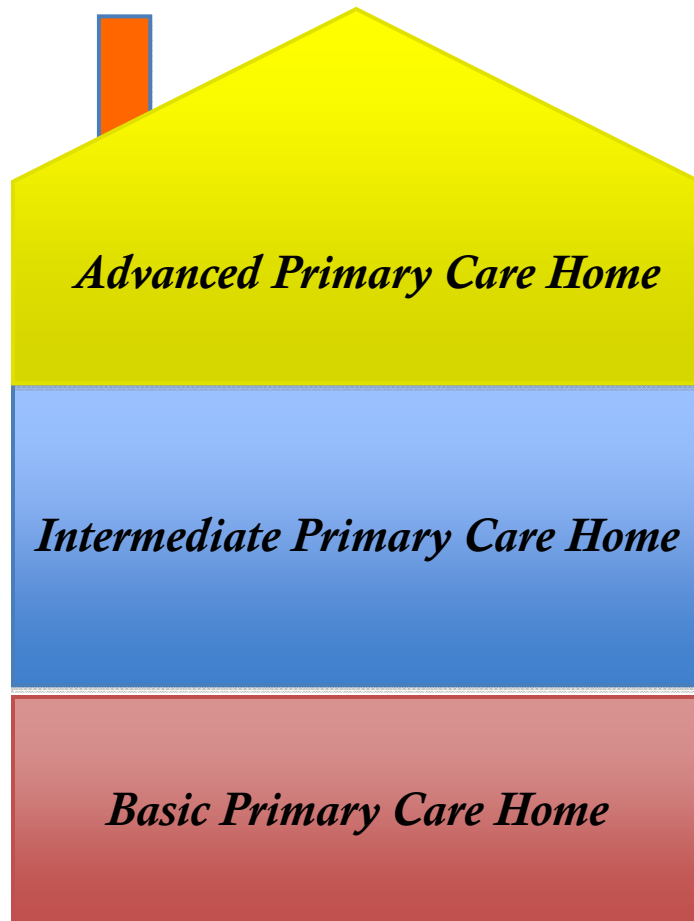


What will it take to transform into a Primary Care Home?

- Status quo primary care?
- Commitment to practice transformation?
- Significant systems and process changes in place?
- Systems and process changes + proven performance improvement capacity?
- Fully functional primary care home, ready to accept accountability for health and financial outcomes.



Different Levels of Primary Care “Home-ness”



- Proactive patient and population management
- Accountable for quality, utilization and cost of care outcomes

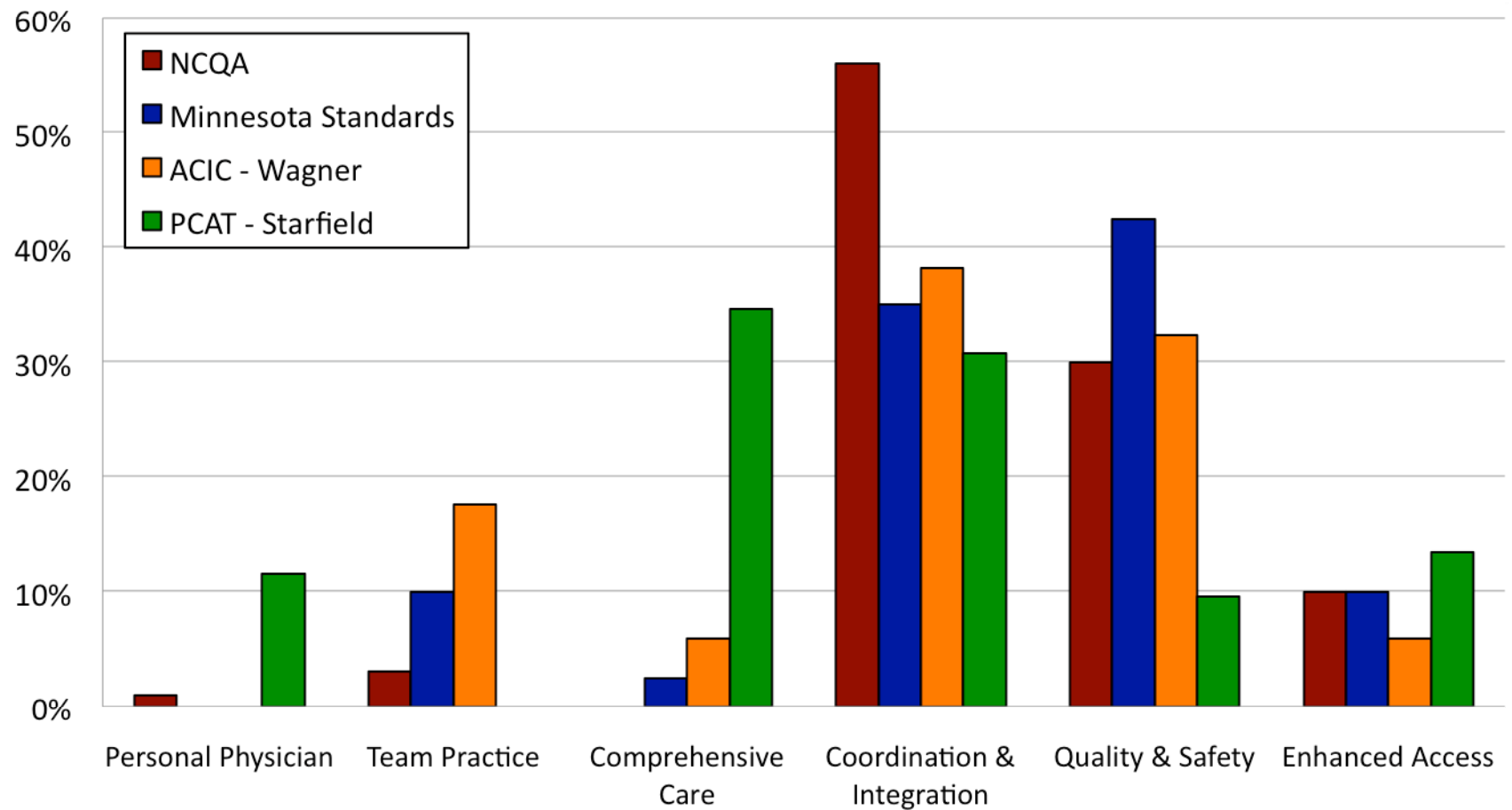
- Demonstrates performance improvement
- Additional structure and process improvements

- Foundational structures and processes

Primary Care Home Standards Advisory Committee

- 15 members, 6 ex-officio content experts
- Multiple stakeholders (patients, providers, plans, employers, health authority, public health)
- 7 public meetings Nov 2009 - Jan 2010
- Reviewed past work in Oregon, other state, federal and private efforts across the country
- Three principle products
 - PCPCH Core Attributes and Standards
 - PCPCH Measures
 - Guiding Principles for Implementation

“Medical Home” Measurement Tools Across the Nation



Oregon's Primary Care Home Core Attributes

What does it mean to a Patient / Person?

ACCESS TO CARE

Be there when I need you.

ACCOUNTABILITY

Take responsibility for making sure I receive the best possible health care.

**COMPREHENSIVE
WHOLE PERSON
CARE**

Provide or help me get the health care and services I need.