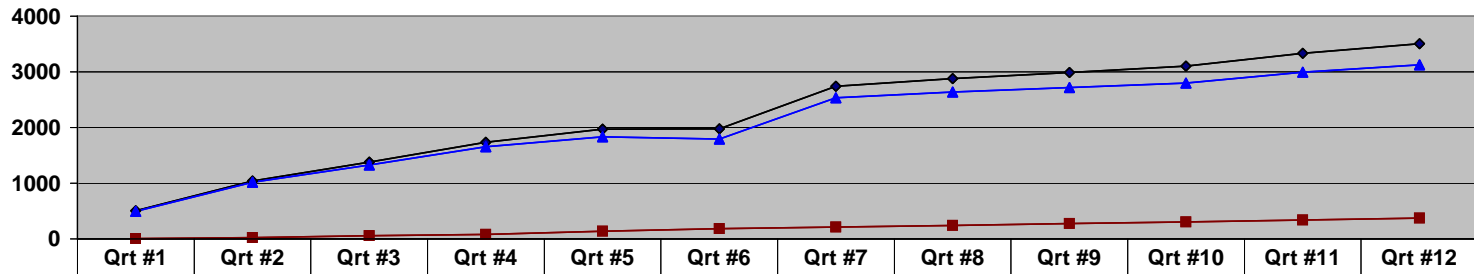


ATTACHMENT #1
ADULT SUPPORT SERVICES
SUMMARY OF ENROLLMENTS AND TERMINATIONS IN BROKERAGES
11/1/01 THROUGH 10/31/04



	Qrt #1	Qrt #2	Qrt #3	Qrt #4	Qrt #5	Qrt #6	Qrt #7	Qrt #8	Qrt #9	Qrt #10	Qrt #11	Qrt #12
◆ Total Enrollments	505	1040	1382	1738	1970	1978	2743	2882	2991	3101	3336	3504
■ Total Terminations	8	22	57	83	137	185	211	242	274	302	341	376
▲ Net Enrollments	497	1018	1325	1655	1833	1793	2532	2640	2717	2799	2995	3128

ATTACHMENT #2

Enrollment and Termination Summary by County

COUNTY	Total Enrollments	Percent to Total	Total Terminations	Percent to Total	Net Enrollments	Percent to Total
Baker	25	0.71%	3	0.80%	22	0.70%
Benton	76	2.17%	7	1.86%	69	2.21%
Clackamas	274	7.82%	34	9.04%	240	7.67%
Clatsop	55	1.57%	4	1.06%	51	1.63%
Columbia	41	1.17%	5	1.33%	36	1.15%
Coos	59	1.68%	5	1.33%	54	1.73%
Crook	19	0.54%	0	0.00%	19	0.61%
Curry	16	0.46%	3	0.80%	13	0.42%
Deschutes	112	3.20%	7	1.86%	105	3.36%
Douglas	114	3.25%	9	2.39%	105	3.36%
Grant	6	0.17%	0	0.00%	6	0.19%
Harney	12	0.34%	1	0.27%	11	0.35%
Jackson	172	4.91%	17	4.52%	155	4.96%
Jefferson	17	0.49%	0	0.00%	17	0.54%
Josephine	83	2.37%	7	1.86%	76	2.43%
Klamath	78	2.23%	11	2.93%	67	2.14%
Lake	5	0.14%	0	0.00%	5	0.16%
Lane	330	9.42%	38	10.11%	292	9.34%
Lincoln	37	1.06%	6	1.60%	31	0.99%
Linn	153	4.37%	16	4.26%	137	4.38%
Malheur	32	0.91%	2	0.53%	30	0.96%
Marion	287	8.19%	23	6.12%	264	8.44%
Mid-Columbia*	63	1.80%	4	1.06%	59	1.89%
Morrow/Wheeler	11	0.31%	2	0.53%	9	0.29%
Multnomah	662	18.89%	74	19.68%	588	18.80%
Polk	52	1.48%	6	1.60%	46	1.47%
Tillamook	40	1.14%	4	1.06%	36	1.15%
Umatilla	68	1.94%	10	2.66%	58	1.85%
Union	26	0.74%	6	1.60%	20	0.64%
Wallowa	9	0.26%	3	0.80%	6	0.19%
Washington	435	12.41%	54	14.36%	381	12.18%
Yamhill	135	3.85%	15	3.99%	120	3.84%
Grand Total	3504	100.00%	376	100.00%	3128	100.00%

* Includes Gilliam, Hood River, Wasco, and Sherman Counties

ATTACHMENT #3

Enrollment and Termination Summary by Brokerage

SUPPORT SERVICE BROKERAGE	Total Enrollments	Percent to Total	Total Terminations	Percent to Total	Net Enrollments	Percent to Total	Contracted Capacity	Percent Enrollments to Capacity
Child, Youth and Family Integrated Service Network (ISN)	501	14%	51	14%	450	14%	700	64%
Community Options (Mult. Co.)	8	0%	8	2%	0	0%	0	N/A
Creative Supports, Inc. (CSI)	255	7%	24	6%	231	7%	400	58%
Eastern Oregon Support Services Brokerage (EOSSB)	252	7%	31	8%	221	7%	350	63%
Full Access Brokerage (FAB)	482	14%	44	12%	438	14%	700	63%
Inclusion, Inc.	464	13%	60	16%	404	13%	550	73%
National Mentor Servies, LLC (DSI)	458	13%	40	11%	418	13%	700	60%
Resource Connections of Oregon (RCO)	375	11%	36	10%	339	11%	450	75%
Self Determination Resources, Inc. (SDRI)	442	13%	54	14%	388	12%	450	86%
Southern Oregon Regional Brokerage (SORB)	267	8%	28	7%	239	8%	350	68%
Grand Total	3504	100%	376	100%	3128	100%	4650	67%