

Monthly Caseload Forecast Variance Report
 Department of Human Services
 Aging and People with Disabilities

SEPTEMBER 2019

The overall Long-Term Care caseload is higher than forecast by 1.4 percent. The Total In-Home caseloads is higher by 2.3 percent while Total NFC and Total CBC caseloads are higher by 0.5 percent.

Total Long-Term Care

Month	Actual	Spring 2019 Forecast	Over/Under Forecast	%
Mar-19	35,312	34,778	534	1.5%
Apr-19	35,300	34,790	510	1.5%
May-19	35,304	34,807	497	1.4%
Jun-19	35,337	34,824	513	1.5%
Jul-19	35,329	34,842	487	1.4%
Aug-19	35,311	34,860	451	1.3%

Total In-Home Services¹

Month	Actual	Spring 2019 Forecast	Over/Under Forecast	%
Mar-19	18,875	18,423	452	2.5%
Apr-19	18,835	18,421	414	2.2%
May-19	18,840	18,422	418	2.3%
Jun-19	18,838	18,424	414	2.2%
Jul-19	18,791	18,425	366	2.0%
Aug-19	18,790	18,427	363	2.0%

**Actual IHC by Type:
K Plan Services**

Month	Total K Plan	IH Hourly without SPPC	Agency without SPPC
Mar-19	16,835	14,072	2,036
Apr-19	16,839	13,933	2,175
May-19	16,836	13,930	2,175
Jun-19	16,802	14,044	2,032
Jul-19	16,803	13,903	2,167
Aug-19	16,791	13,893	2,169

**Actual IHC by Type:
K Plan Services Continued**

Month	Spousal	Specialized Living	Independent Choices ²
Mar-19	20	198	509
Apr-19	18	203	510
May-19	19	194	518
Jun-19	20	198	508
Jul-19	18	203	512
Aug-19	19	193	517

**Actual IHC by Type:
State Plan Personal Care (non-K)**

Month	Total SPPC	APD SPPC ³	I/DD SPPC
Mar-19	2,070	2,040	30
Apr-19	2,021	1,996	25
May-19	2,027	2,004	23
Jun-19	2,065	2,036	29
Jul-19	2,014	1,988	26
Aug-19	2,022	1,999	23

**Actual IHC by Type:
State Plan Personal Care (non-K) Continued**

Month	APD SPPC ³	Hourly with SPPC	Agency with SPPC
Mar-19	2,040	1,606	434
Apr-19	1,996	1,563	433
May-19	2,004	1,568	436
Jun-19	2,036	1,603	433
Jul-19	1,988	1,557	431
Aug-19	1,999	1,564	435

Total Nursing Facility Care

Month	Actual	Spring 2019 Forecast	Over/Under Forecast	%
Mar-19	4,441	4,426	15	0.3%
Apr-19	4,446	4,427	19	0.4%
May-19	4,451	4,428	23	0.5%
Jun-19	4,433	4,429	4	0.1%
Jul-19	4,447	4,431	16	0.4%
Aug-19	4,421	4,433	-12	-0.3%

Actual NFC by Type

Month	Basic	Complex Medical	Enhanced Care	Pediatric Care
Mar-19	3,689	675	41	36
Apr-19	3,658	710	41	37
May-19	3,693	685	39	34
Jun-19	3,691	665	41	36
Jul-19	3,670	700	40	37
Aug-19	3,671	675	40	35

Total Community-Based Care

Month	Actual	Spring 2019 Forecast	Over/Under Forecast	%
Mar-19	11,996	11,929	67	0.6%
Apr-19	12,019	11,942	77	0.6%
May-19	12,013	11,957	56	0.5%
Jun-19	12,066	11,971	95	0.8%
Jul-19	12,091	11,986	105	0.9%
Aug-19	12,100	12,000	100	0.8%

CBC: Assisted Living

Month	Actual	Spring 2019 Forecast	Over/Under Forecast	%
Mar-19	4,176	4,206	-30	-0.7%
Apr-19	4,202	4,208	-6	-0.1%
May-19	4,210	4,209	1	0.0%
Jun-19	4,204	4,211	-7	-0.2%
Jul-19	4,230	4,213	17	0.4%
Aug-19	4,239	4,214	25	0.6%

The last 3 months of LTC "actuals" are preliminary estimates and subject to change.

Monthly Caseload Forecast Variance Report
Department of Human Services
Aging and People with Disabilities

SEPTEMBER 2019

CBC: Adult Foster Care

Month	Actual	Spring 2019 Forecast	Over/Under Forecast	%
Mar-19	2,412	2,390	22	0.9%
Apr-19	2,395	2,382	13	0.5%
May-19	2,363	2,376	-13	-0.5%
Jun-19	2,417	2,369	48	2.0%
Jul-19	2,399	2,363	36	1.5%
Aug-19	2,367	2,357	10	0.4%

CBC: PACE

Month	Actual	Spring 2019 Forecast	Over/Under Forecast	%
Mar-19	1,479	1,468	11	0.7%
Apr-19	1,487	1,474	13	0.9%
May-19	1,492	1,480	12	0.8%
Jun-19	1,493	1,486	7	0.5%
Jul-19	1,507	1,491	16	1.1%
Aug-19	1,527	1,497	30	2.0%

CBC: Residential Care Total

Month	Actual	Spring 2019 Forecast	Over/Under Forecast	%
Mar-19	3,929	3,865	64	1.7%
Apr-19	3,935	3,878	57	1.5%
May-19	3,948	3,892	56	1.4%
Jun-19	3,952	3,905	47	1.2%
Jul-19	3,955	3,919	36	0.9%
Aug-19	3,967	3,932	35	0.9%

CBC: Residential Care - Regular

Month	Actual	Spring 2019 Forecast	Over/Under Forecast	%
Mar-19	877	866	11	1.3%
Apr-19	859	865	-6	-0.7%
May-19	863	865	-2	-0.2%
Jun-19	884	864	20	2.3%
Jul-19	865	864	1	0.1%
Aug-19	868	863	5	0.6%

CBC: Residential Care - Contract & Memory Care

Month	Actual	Spring 2019 Forecast	Over/Under Forecast	%
Mar-19	3,052	2,999	53	1.8%
Apr-19	3,076	3,013	63	2.1%
May-19	3,085	3,027	58	1.9%
Jun-19	3,068	3,041	27	0.9%
Jul-19	3,090	3,055	35	1.1%
Aug-19	3,099	3,069	30	1.0%

CBC: Residential Care - Memory Care

Month	Memory Care	Contract RCF	Total Contract RCF	Memory Care %
Mar-19	2,438	614	3,052	80.3%
Apr-19	2,458	618	3,076	80.1%
May-19	2,469	616	3,085	79.9%
Jun-19	2,451	617	3,068	79.9%
Jul-19	2,469	621	3,090	80.0%
Aug-19	2,479	620	3,099	79.9%

SNAP: Aging and People with Disabilities ⁴

Month	Actual	Spring 2019 Forecast	Over/Under Forecast	%
Mar-19	132,873	132,901	-28	0.0%
Apr-19	132,750	133,048	-298	-0.2%
May-19	132,716	133,042	-326	-0.2%
Jun-19	132,611	133,094	-483	-0.4%
Jul-19	132,607	133,178	-571	-0.4%
Aug-19	132,351	133,147	-796	-0.6%

The last 3 months of LTC "actuals" are preliminary estimates and subject to change.

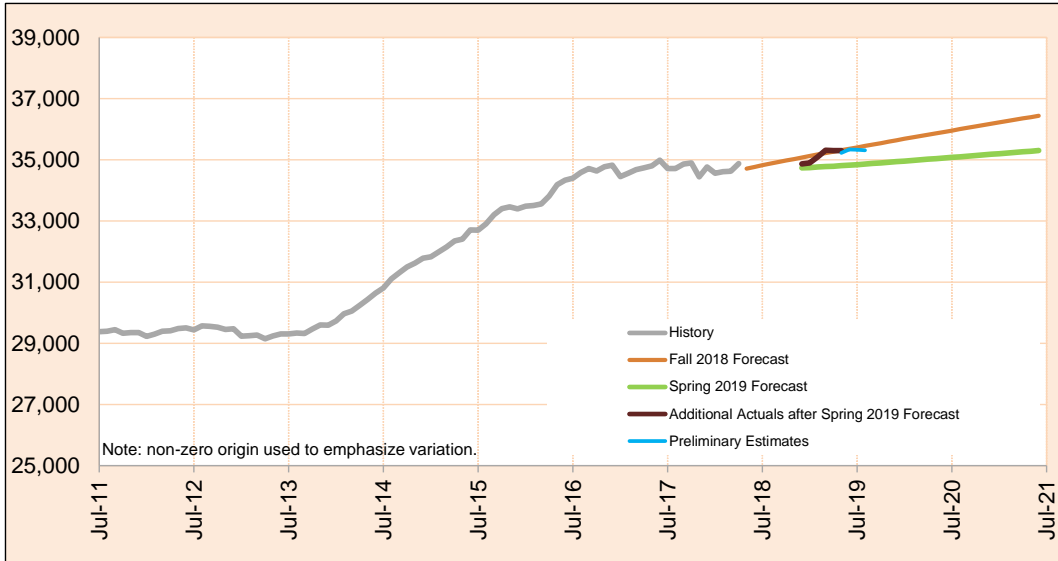
1. Total In-Home Care = K Plan services + non-K Plan services.
2. Independent Choices is a 1915 (J) State Plan Service Option.
3. State Plan Personal Care provides individual care Hourly or through Agencies to APD or I/DD clients.
I/DD SPPC is not included in APD's In-Home Care caseload.
4. SNAP APD are clients accessing SNAP (food stamp) benefits through APD programs. Source: SSP Monthly Caseload Forecast Variance Report

Monthly Caseload Forecast Variance Report
 Department of Human Services
 Aging and People with Disabilities

SEPTEMBER 2019

Total Long Term Care

Long-Term Care (LTC) services can be provided in institutional settings such as nursing facilities, in community-based care settings like residential facilities and adult foster homes, or in the person's own home. These services include: In Home Care, Community Based Care, and Nursing Facilities.



Month	Actual	Spring 2019 Forecast	Over/Under Forecast (Spring 2019)		Fall 2018 Forecast	Over/Under Forecast (Fall 2018)	
Aug-18	34,732	-	-	-	34,873	-141	-0.4%
Sep-18	34,848	-	-	-	34,927	-79	-0.2%
Oct-18	34,719	-	-	-	34,976	-257	-0.7%
Nov-18	34,733	-	-	-	35,024	-291	-0.8%
Dec-18	34,866	34,736	130	0.4%	35,073	-207	-0.6%
Jan-19	34,897	34,747	150	0.4%	35,124	-227	-0.6%
Feb-19	35,092	34,763	329	0.9%	35,173	-81	-0.2%
Mar-19	35,312	34,778	534	1.5%	35,221	91	0.3%
Apr-19	35,300	34,790	510	1.5%	35,267	33	0.1%
May-19	35,304	34,807	497	1.4%	35,313	-9	0.0%
Jun-19	35,337	34,824	513	1.5%	35,358	-21	-0.1%
Jul-19	35,329	34,842	487	1.4%	35,405	-76	-0.2%
Aug-19	35,311	34,860	451	1.3%	35,454	-143	-0.4%

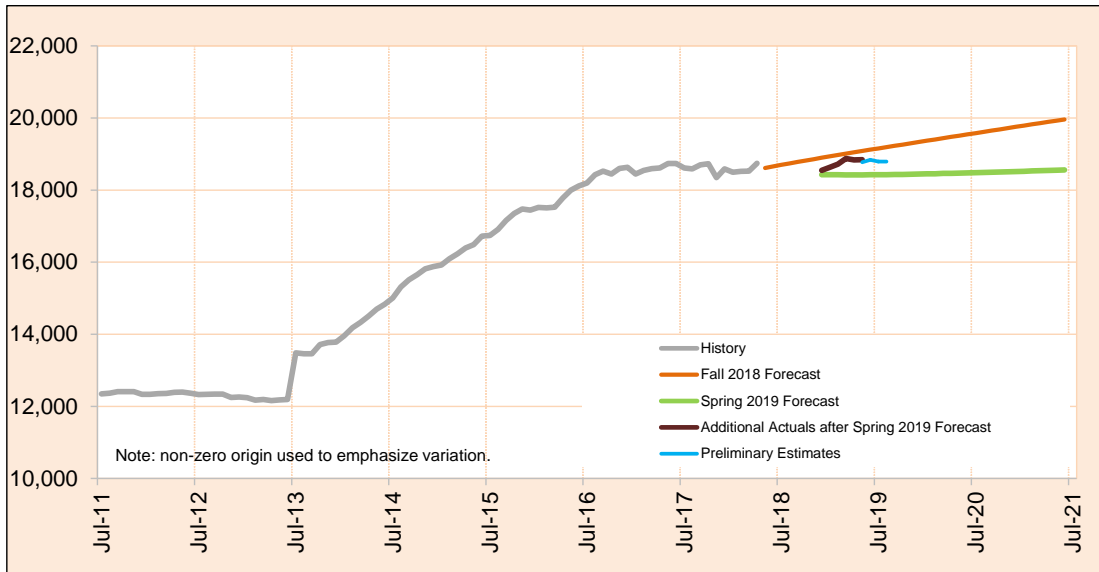
Preliminary estimates are shown in italics.

Monthly Caseload Forecast Variance Report
 Department of Human Services
 Aging and People with Disabilities

SEPTEMBER 2019

Total In-Home Services

In-Home programs provide personal assistance services that help people stay in their homes when they need assistance with Activities of Daily Living (ADL). In-Home Care services include: Hourly, Live-In and spousal. In-Home Agency also provides similar In-Home care Hourly services at individual's place of residence. The Total In-Home is comprised of In-Home Care and In-Home Agency (including State Plan Personal Care Services) , Specialized Living and Independent Choices.



Month	Actual	Spring 2019 Forecast	Over/Under Forecast (Spring 2019)		Fall 2018 Forecast	Over/Under Forecast (Fall 2018)	
Aug-18	18,466	-	-	-	18,740	-274	-1.5%
Sep-18	18,560	-	-	-	18,780	-220	-1.2%
Oct-18	18,427	-	-	-	18,819	-392	-2.1%
Nov-18	18,423	-	-	-	18,858	-435	-2.3%
Dec-18	18,547	18,426	121	0.7%	18,898	-351	-1.9%
Jan-19	18,631	18,424	207	1.1%	18,938	-307	-1.6%
Feb-19	18,720	18,424	296	1.6%	18,975	-255	-1.3%
Mar-19	18,875	18,423	452	2.5%	19,013	-138	-0.7%
Apr-19	18,835	18,421	414	2.2%	19,048	-213	-1.1%
May-19	18,840	18,422	418	2.3%	19,084	-244	-1.3%
Jun-19	18,838	18,424	414	2.2%	19,120	-282	-1.5%
Jul-19	18,791	18,425	366	2.0%	19,156	-365	-1.9%
Aug-19	18,790	18,427	363	2.0%	19,192	-402	-2.1%

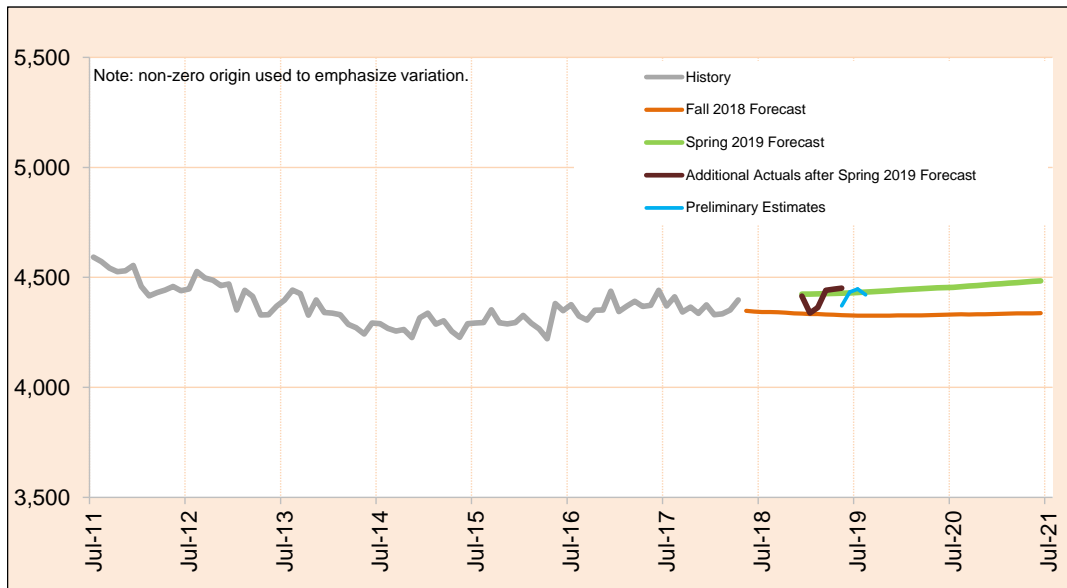
Preliminary estimates are shown in italics.

Monthly Caseload Forecast Variance Report
 Department of Human Services
 Aging and People with Disabilities

SEPTEMBER 2019

Total Nursing Facilities Care

Nursing Facilities provide institutional services for seniors and people with disabilities in nursing facilities licensed and regulated by DHS. Nursing facilities provide individuals with skilled nursing services, housing, related services and ongoing assistance with activities of daily living. The Total Nursing Facilities is comprised of: Basic Care, Complex Medical Add-On, Pediatric Care and Enhanced Care.



Month	Actual	Spring 2019 Forecast	Over/Under Forecast (Spring 2019)	Fall 2018 Forecast	Over/Under Forecast (Fall 2018)
Aug-18	4,423	-	-	4,342	81 1.9%
Sep-18	4,430	-	-	4,341	89 2.1%
Oct-18	4,431	-	-	4,339	92 2.1%
Nov-18	4,414	-	-	4,336	78 1.8%
Dec-18	4,415	4,424	-9 -0.2%	4,335	80 1.8%
Jan-19	4,338	4,424	-86 -1.9%	4,333	5 0.1%
Feb-19	4,363	4,425	-62 -1.4%	4,333	30 0.7%
Mar-19	4,441	4,426	15 0.3%	4,331	110 2.5%
Apr-19	4,446	4,427	19 0.4%	4,330	116 2.7%
May-19	4,451	4,428	23 0.5%	4,328	123 2.8%
Jun-19	4,433	4,429	4 0.1%	4,327	106 2.4%
Jul-19	4,447	4,431	16 0.4%	4,326	121 2.8%
Aug-19	4,421	4,433	-12 -0.3%	4,326	95 2.2%

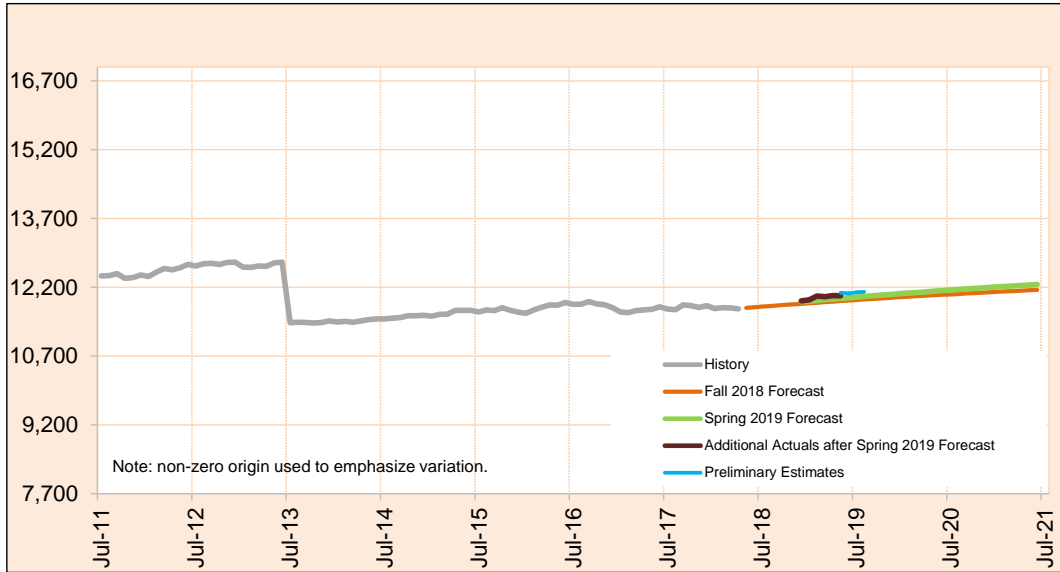
Preliminary estimates are shown in italics.

Monthly Caseload Forecast Variance Report
 Department of Human Services
 Aging and People with Disabilities

SEPTEMBER 2019

Total Community-Based Care

Community-Based Care caseload includes clients receiving services in licensed Community-Based Care settings. Services include assistance with ADL, medication oversight, and social activities; services can also include nursing and behavioral supports to meet complex needs. Total Community-Based Care caseload is comprised of: Adult Foster Care, Residential Care Assisted Living and PACE.



Month	Actual	Spring 2019 Forecast	Over/Under Forecast (Spring 2019)	Fall 2018 Forecast	Over/Under Forecast (Fall 2018)
Aug-18	11,843	-	-	11,791	52
Sep-18	11,858	-	-	11,806	52
Oct-18	11,861	-	-	11,818	43
Nov-18	11,896	-	-	11,830	66
Dec-18	11,904	11,886	18	11,840	64
Jan-19	11,928	11,899	29	11,853	75
Feb-19	12,009	11,914	95	11,865	144
Mar-19	11,996	11,929	67	11,877	119
Apr-19	12,019	11,942	77	11,889	130
May-19	12,013	11,957	56	11,901	112
Jun-19	12,066	11,971	95	11,911	155
Jul-19	12,091	11,986	105	11,923	168
Aug-19	<i>12,100</i>	12,000	100	11,936	164

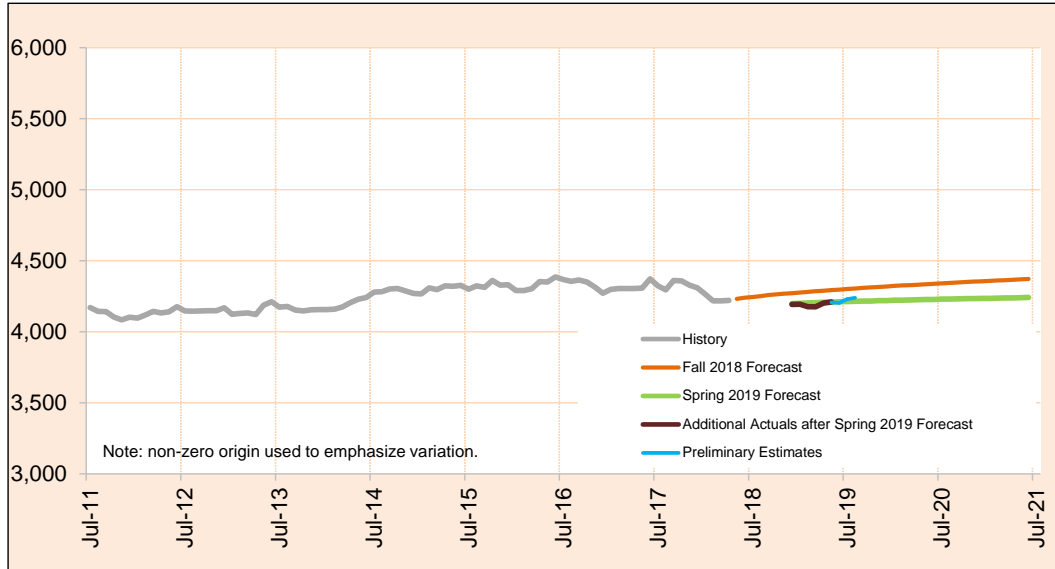
Preliminary estimates are shown in italics.

Monthly Caseload Forecast Variance Report
 Department of Human Services
 Aging and People with Disabilities

SEPTEMBER 2019

CBC: Assisted Living

Assisted Living Facilities (ALF) are licensed 24-hour care settings for six or more residents that include private apartments.



Month	Actual	Spring 2019 Forecast	Over/Under Forecast (Spring 2019)		Fall 2018 Forecast	Over/Under Forecast (Fall 2018)	
Aug-18	4,249	-	-	-	4,251	-2	0.0%
Sep-18	4,257	-	-	-	4,259	-2	0.0%
Oct-18	4,193	-	-	-	4,264	-71	-1.7%
Nov-18	4,202	-	-	-	4,268	-66	-1.5%
Dec-18	4,193	4,199	-6	-0.1%	4,271	-78	-1.8%
Jan-19	4,194	4,201	-7	-0.2%	4,276	-82	-1.9%
Feb-19	4,177	4,203	-26	-0.6%	4,281	-104	-2.4%
Mar-19	4,176	4,206	-30	-0.7%	4,285	-109	-2.5%
Apr-19	4,202	4,208	-6	-0.1%	4,289	-87	-2.0%
May-19	4,210	4,209	1	0.0%	4,293	-83	-1.9%
Jun-19	4,204	4,211	-7	-0.2%	4,297	-93	-2.2%
Jul-19	4,230	4,213	17	0.4%	4,301	-71	-1.7%
Aug-19	4,239	4,214	25	0.6%	4,305	-66	-1.5%

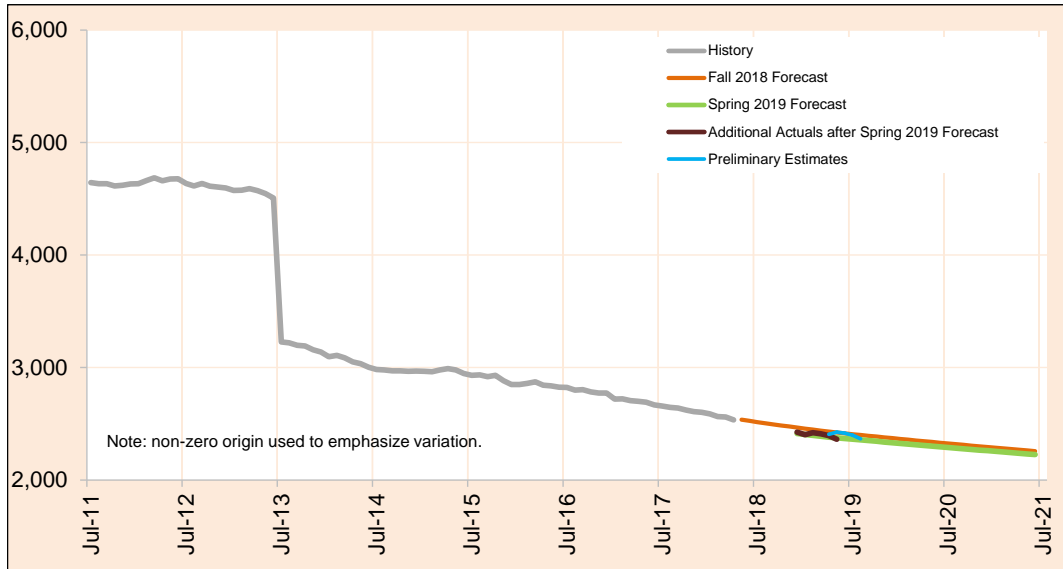
Preliminary estimates are shown in italics.

Monthly Caseload Forecast Variance Report
 Department of Human Services
 Aging and People with Disabilities

SEPTEMBER 2019

CBC: Adult Foster Care

Commercial Adult Foster Care is open to members of the public who are not related to the care provider.



Month	Actual	Spring 2019 Forecast	Over/Under Forecast (Spring 2019)	Fall 2018 Forecast	Over/Under Forecast (Fall 2018)
Aug-18	2,466	-	-	2,505	-39
Sep-18	2,426	-	-	2,495	-69
Oct-18	2,433	-	-	2,485	-52
Nov-18	2,426	-	-	2,476	-50
Dec-18	2,426	2,414	12 0.5%	2,467	-41
Jan-19	2,403	2,405	-2 -0.1%	2,458	-55
Feb-19	2,422	2,398	24 1.0%	2,449	-27
Mar-19	2,412	2,390	22 0.9%	2,440	-28
Apr-19	2,407	2,382	25 1.0%	2,432	-25
May-19	2,426	2,376	50 2.1%	2,424	2
Jun-19	2,417	2,369	48 2.0%	2,416	1
Jul-19	2,399	2,363	36 1.5%	2,408	-9
Aug-19	2,367	2,357	10 0.4%	2,401	-34

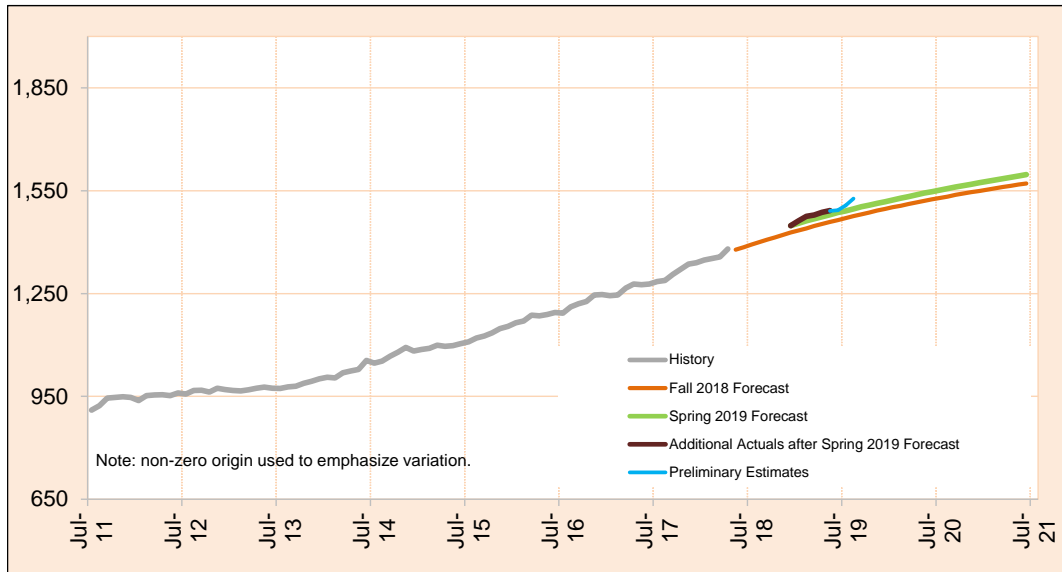
Preliminary estimates are shown in italics.

Monthly Caseload Forecast Variance Report
 Department of Human Services
 Aging and People with Disabilities

SEPTEMBER 2019

CBC: PACE

PACE is a capitated Medicare/Medicaid program that provides all-inclusive care for the elderly including acute health care and long-term care services. Seniors served in this program generally receive adult day care services and live in a variety of care settings.



Month	Actual	Spring 2019 Forecast	Over/Under Forecast (Spring 2019)		Fall 2018 Forecast	Over/Under Forecast (Fall 2018)	
Jul-18	1,419	-	-	-	1,393	26	1.9%
Aug-18	1,420	-	-	-	1,400	20	1.4%
Sep-18	1,429	-	-	-	1,407	22	1.6%
Oct-18	1,435	-	-	-	1,414	21	1.5%
Nov-18	1,441	-	-	-	1,421	20	1.4%
Dec-18	1,448	1,448	0	0.0%	1,428	20	1.4%
Jan-19	1,462	1,455	7	0.5%	1,434	28	2.0%
Feb-19	1,475	1,462	13	0.9%	1,440	35	2.4%
Mar-19	1,479	1,468	11	0.7%	1,447	32	2.2%
Apr-19	1,485	1,474	11	0.7%	1,453	32	2.2%
May-19	1,491	1,480	11	0.7%	1,459	32	2.2%
Jun-19	1,493	1,486	7	0.5%	1,464	29	2.0%
Jul-19	1,507	1,491	16	1.1%	1,470	37	2.5%
Aug-19	1,527	1,497	30	2.0%	1,476	51	3.5%

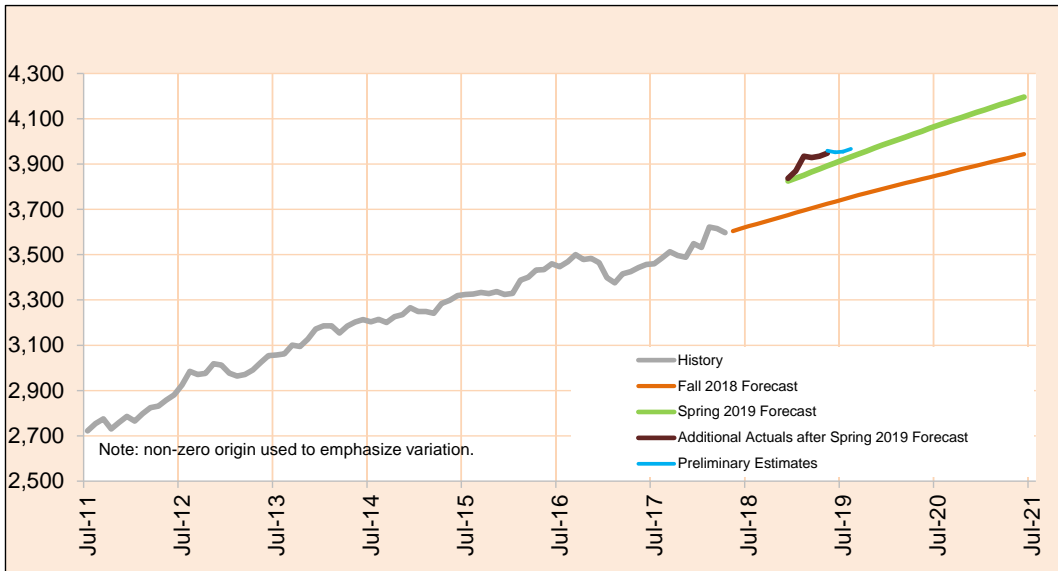
Preliminary estimates are shown in italics.

Monthly Caseload Forecast Variance Report
 Department of Human Services
 Aging and People with Disabilities

SEPTEMBER 2019

CBC: Residential Care Total

Residential Care Facilities (RCF) are licensed 24-hour care settings serving six or more residents. Facilities range in size from six beds to over 100. Different types of residential care include 24-hour residential care for adults as well as specialty Alzheimer care facilities. These services include: Regular and Contract facilities.



Month	Actual	Spring 2019 Forecast	Over/Under Forecast (Spring 2019)	Fall 2018 Forecast	Over/Under Forecast (Fall 2018)
Aug-18	3,708	-	-	3,635	73
Sep-18	3,746	-	-	3,645	101
Oct-18	3,800	-	-	3,655	145
Nov-18	3,827	-	-	3,665	162
Dec-18	3,837	3,825	12	3,674	163
Jan-19	3,869	3,838	31	3,685	184
Feb-19	3,935	3,851	84	3,695	240
Mar-19	3,929	3,865	64	3,705	224
Apr-19	3,890	3,878	12	3,715	175
May-19	3,959	3,892	67	3,725	234
Jun-19	3,952	3,905	47	3,734	218
Jul-19	3,955	3,919	36	3,744	211
Aug-19	3,967	3,932	35	3,754	213

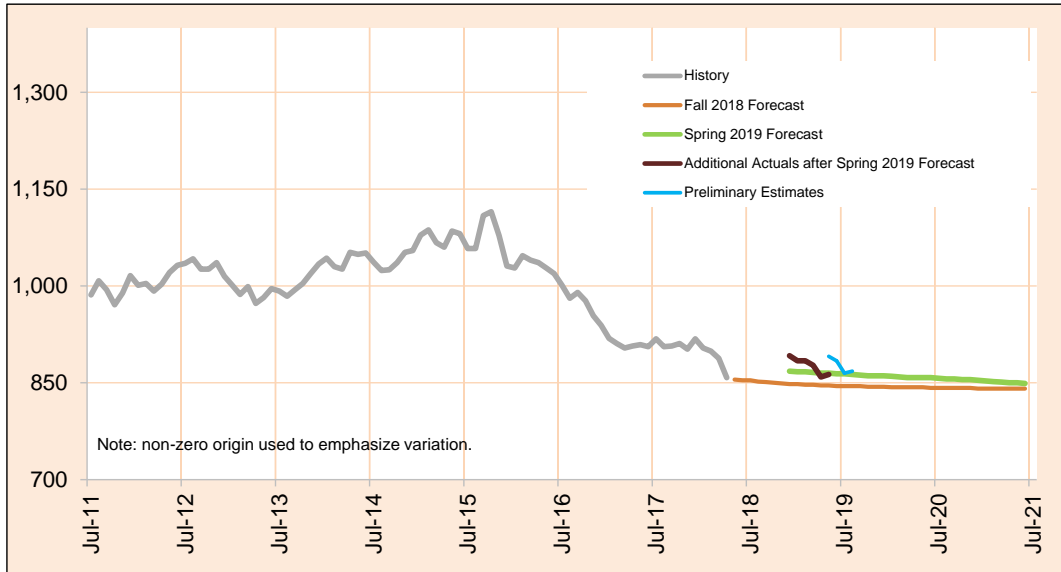
Preliminary estimates are shown in italics.

Monthly Caseload Forecast Variance Report
 Department of Human Services
 Aging and People with Disabilities

SEPTEMBER 2019

CBC: Residential Care - Regular

Residential Care Facilities (RCF) are licensed 24-hour care settings serving six or more residents. Facilities range in size from six beds to over 100. Regular RCF provides 24-hour residential care for adult residents.



Month	Actual	Spring 2019 Forecast	Over/Under Forecast (Spring 2019)	Fall 2018 Forecast	Over/Under Forecast (Fall 2018)
Aug-18	873	-	-	852	21
Sep-18	878	-	-	851	27
Oct-18	869	-	-	850	19
Nov-18	874	-	-	849	25
Dec-18	892	868	24	848	44
Jan-19	884	867	17	848	36
Feb-19	884	867	17	847	37
Mar-19	877	866	11	847	30
Apr-19	892	865	27	846	46
May-19	891	865	26	846	45
Jun-19	884	864	20	845	39
Jul-19	865	864	1	845	20
Aug-19	868	863	5	845	23

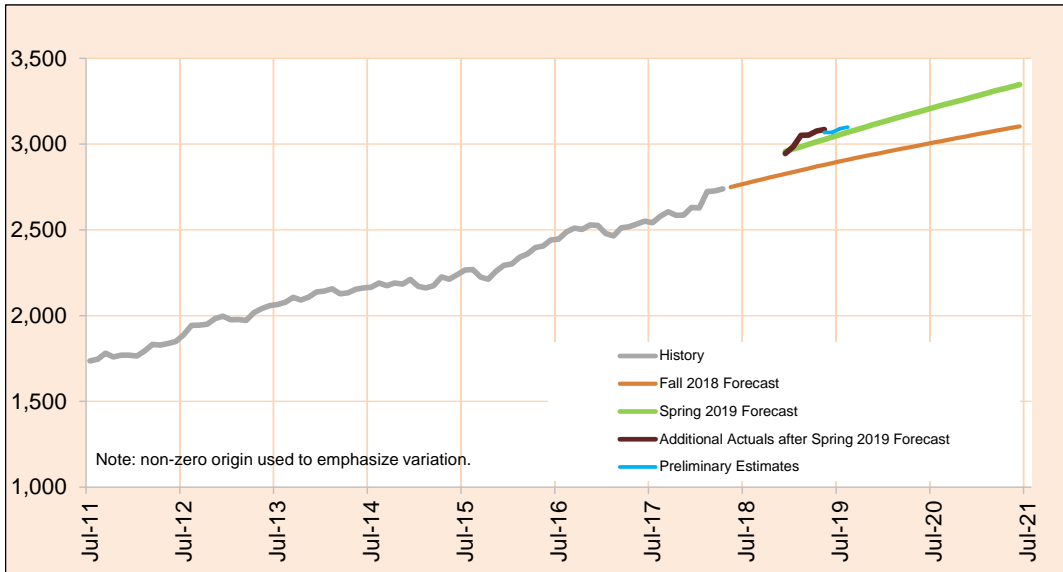
Preliminary estimates are shown in italics.

Monthly Caseload Forecast Variance Report
 Department of Human Services
 Aging and People with Disabilities

SEPTEMBER 2019

CBC: Residential Care - Contract & Memory Care

Contract Residential Care Facilities (RCF) are licensed 24-hour care settings serving six or more residents. Facilities range in size from six beds to over 100. Contract RCF provides 24-hour residential care for adults with Alzheimer and special need residents.



Month	Actual	Spring 2019 Forecast	Over/Under Forecast (Spring 2019)	Fall 2018 Forecast	Over/Under Forecast (Fall 2018)
Aug-18	2,835	-	-	2,783	52
Sep-18	2,868	-	-	2,794	74
Oct-18	2,931	-	-	2,805	126
Nov-18	2,953	-	-	2,816	137
Dec-18	2,945	2,957	-12 -0.4%	2,826	119
Jan-19	2,985	2,971	14 0.5%	2,837	148
Feb-19	3,051	2,984	67 2.2%	2,848	203
Mar-19	3,052	2,999	53 1.8%	2,858	194
Apr-19	2,998	3,013	-15 -0.5%	2,869	129
May-19	3,068	3,027	41 1.4%	2,879	189
Jun-19	3,068	3,041	27 0.9%	2,889	179
Jul-19	3,090	3,055	35 1.1%	2,899	191
Aug-19	3,099	3,069	30 1.0%	2,909	190

Preliminary estimates are shown in italics.

Monthly Caseload Forecast Variance Report
 Department of Human Services
 Aging and People with Disabilities

SEPTEMBER 2019

Total Long Term Care				
Month	Actual	Preliminary Estimates	Variance	%
Dec-18	34,866	34,961	95	0.3%
Jan-19	34,897	34,835	-62	-0.2%
Feb-19	35,092	34,972	-120	-0.3%
Mar-19	35,312	34,959	-353	-1.0%
Apr-19	35,300	35,004	-296	-0.8%
May-19	35,304	35,226	-78	-0.2%
Average				<u>-0.4%</u>

Total In Home Care				
Month	Actual	Preliminary Estimates	Variance	%
Dec-18	18,547	18,579	32	0.2%
Jan-19	18,631	18,446	-185	-1.0%
Feb-19	18,720	18,522	-198	-1.1%
Mar-19	18,875	18,548	-327	-1.7%
Apr-19	18,835	18,686	-149	-0.8%
May-19	18,840	18,772	-68	-0.4%
Average				<u>-0.8%</u>

Total Nursing Facilities				
Month	Actual	Preliminary Estimates	Variance	%
Dec-18	4,415	4,441	26	0.6%
Jan-19	4,338	4,436	98	2.3%
Feb-19	4,363	4,461	98	2.2%
Mar-19	4,441	4,422	-19	-0.4%
Apr-19	4,446	4,311	-135	-3.0%
May-19	4,451	4,371	-80	-1.8%
Average				<u>0.0%</u>

Total Community Based Care Facilities				
Month	Actual	Preliminary Estimates	Variance	%
Dec-18	11,904	11,941	37	0.3%
Jan-19	11,928	11,953	25	0.2%
Feb-19	12,009	11,989	-20	-0.2%
Mar-19	11,996	11,989	-7	-0.1%
Apr-19	12,019	12,007	-12	-0.1%
May-19	12,013	12,083	70	0.6%
Average				<u>0.1%</u>