

APRIL 2020

Note: The Spring 2020 caseload forecast is based on data (whether preliminary or final) available through February 2020. The resulting forecasts do not account for the rapid changes that occurred due to the Governor's Emergency Order mandating physical distancing or the economic effects of a global pandemic. The changes in public policy, behavior, and economics due to the current crisis will be accounted for in the Fall 2020 forecast, which will be released in September.

Overall, Self Sufficiency Program caseload is tracking with the Spring 2020 forecast with exceptions of programs reflected the COVID-19 outbreaks. March caseloads of SNAP Self Sufficiency were 229,088 increased by 5.5% compared to the February caseloads. TADVS caseloads in March show weak seasonal patterns that may relate to a Shelter-In-Place situation.

Total Temporary Assistance for Needy Families

| Month | Actual | Spring 2020 Forecast | Over/Under Forecast | % |
|--------|--------|----------------------|---------------------|-------|
| Dec-19 | 18,405 | - | - | - |
| Jan-20 | 18,512 | - | - | - |
| Feb-20 | 18,591 | - | - | - |
| Mar-20 | 18,416 | 18,472 | -56 | -0.3% |
| Apr-20 | - | 18,481 | - | - |
| May-20 | - | 18,471 | - | - |

TANF: One-Parent

| Month | Actual | Spring 2020 Forecast | Over/Under Forecast | % |
|--------|--------|----------------------|---------------------|-------|
| Dec-19 | 15,775 | - | - | - |
| Jan-20 | 15,794 | - | - | - |
| Feb-20 | 15,866 | - | - | - |
| Mar-20 | 15,692 | 15,723 | -31 | -0.2% |
| Apr-20 | - | 15,691 | - | - |
| May-20 | - | 15,735 | - | - |

TANF: Two-Parent

| Month | Actual | Spring 2020 Forecast | Over/Under Forecast | % |
|--------|--------|----------------------|---------------------|-------|
| Dec-19 | 2,630 | - | - | - |
| Jan-20 | 2,718 | - | - | - |
| Feb-20 | 2,725 | - | - | - |
| Mar-20 | 2,724 | 2,749 | -25 | -0.9% |
| Apr-20 | - | 2,790 | - | - |
| May-20 | - | 2,736 | - | - |

TANF Employment Payments

| Month | Actual | Spring 2020 Forecast | Over/Under Forecast | % |
|--------|--------|----------------------|---------------------|-------|
| Dec-19 | 2,088 | - | - | - |
| Jan-20 | 1,962 | - | - | - |
| Feb-20 | 1,679 | - | - | - |
| Mar-20 | 1,595 | 1,602 | -7 | -0.4% |
| Apr-20 | - | 1,585 | - | - |
| May-20 | - | 1,781 | - | - |

Temporary Assistance for Domestic Violence Survivors - with Payment (Families)

| Month | Actual | Spring 2020 Forecast | Over/Under Forecast | % |
|--------|--------|----------------------|---------------------|------|
| Dec-19 | 304 | - | - | - |
| Jan-20 | 370 | - | - | - |
| Feb-20 | 271 | - | - | - |
| Mar-20 | 284 | 259 | 25 | 9.7% |
| Apr-20 | - | 282 | - | - |
| May-20 | - | 332 | - | - |

Temporary Assistance for Domestic Violence Survivors - without Payment (Families)

| Month | Actual | Spring 2020 Forecast | Over/Under Forecast | % |
|--------|--------|----------------------|---------------------|-------|
| Nov-19 | 1,067 | - | - | - |
| Dec-19 | 975 | - | - | - |
| Jan-20 | 960 | - | - | - |
| Feb-20 | 981 | 857 | 124 | 14.5% |
| Mar-20 | - | 811 | - | - |
| Apr-20 | - | 817 | - | - |

Pre-SSI

| Month | Actual | Spring 2020 Forecast | Over/Under Forecast | % |
|--------|--------|----------------------|---------------------|-------|
| Dec-19 | 223 | - | - | - |
| Jan-20 | 215 | - | - | - |
| Feb-20 | 211 | - | - | - |
| Mar-20 | 206 | 209 | -3 | -1.4% |
| Apr-20 | - | 206 | - | - |
| May-20 | - | 202 | - | - |

Total Supplemental Nutrition Assistance Programs

| Month | Actual | Spring 2020 Forecast | Over/Under Forecast | % |
|--------|---------|----------------------|---------------------|------|
| Dec-19 | 348,157 | - | - | - |
| Jan-20 | 348,772 | - | - | - |
| Feb-20 | 349,244 | - | - | - |
| Mar-20 | 361,221 | 349,777 | 11,444 | 3.3% |
| Apr-20 | - | 350,144 | - | - |
| May-20 | - | 350,042 | - | - |

APRIL 2020

SNAP: Aging and People with Disabilities

| Month | Actual | Spring 2020 Forecast | Over/Under Forecast | % |
|--------|---------|----------------------|---------------------|------|
| Dec-19 | 132,107 | - | - | - |
| Jan-20 | 131,918 | - | - | - |
| Feb-20 | 131,999 | - | - | - |
| Mar-20 | 132,133 | 131,937 | 196 | 0.1% |
| Apr-20 | - | 131,934 | - | - |
| May-20 | - | 131,904 | - | - |

SNAP: Self Sufficiency

| Month | Actual | Spring 2020 Forecast | Over/Under Forecast | % |
|--------|---------|----------------------|---------------------|------|
| Dec-19 | 216,050 | - | - | - |
| Jan-20 | 216,854 | - | - | - |
| Feb-20 | 217,245 | - | - | - |
| Mar-20 | 229,088 | 217,840 | 11,248 | 5.2% |
| Apr-20 | - | 218,210 | - | - |
| May-20 | - | 218,138 | - | - |

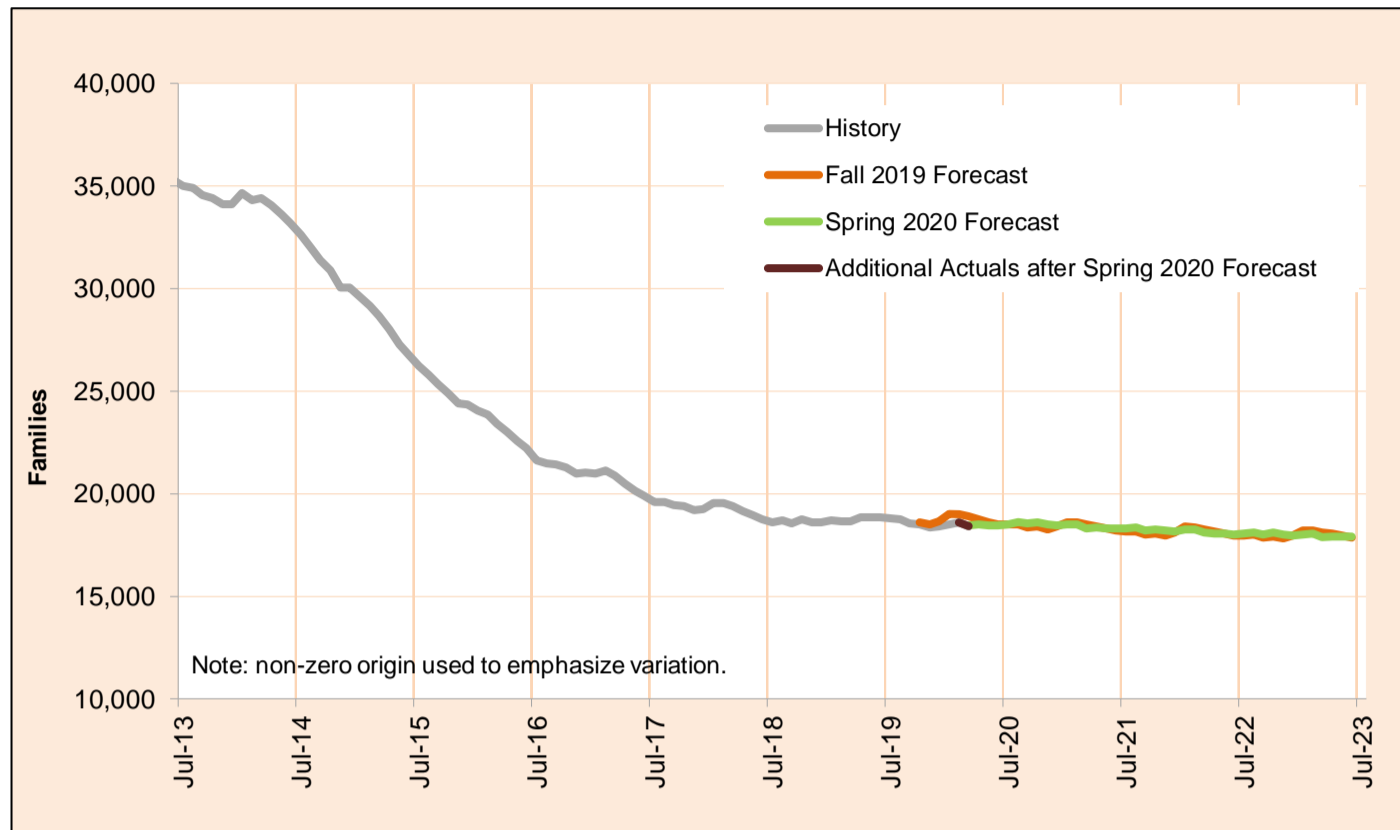
Employment Related Daycare (Families)

| Month | Actual | Forecast Discontinued |
|--------|--------|-----------------------|
| Dec-19 | 7,407 | |
| Jan-20 | 7,293 | |
| Feb-20 | 7,312 | |
| Mar-20 | 7,277 | |
| Apr-20 | - | |
| May-20 | - | |

APRIL 2020

Total Temporary Assistance for Needy Families

The Temporary Assistance for Needy Families (TANF) program provides services and cash grants to low-income families with children to help them become self-sufficient.

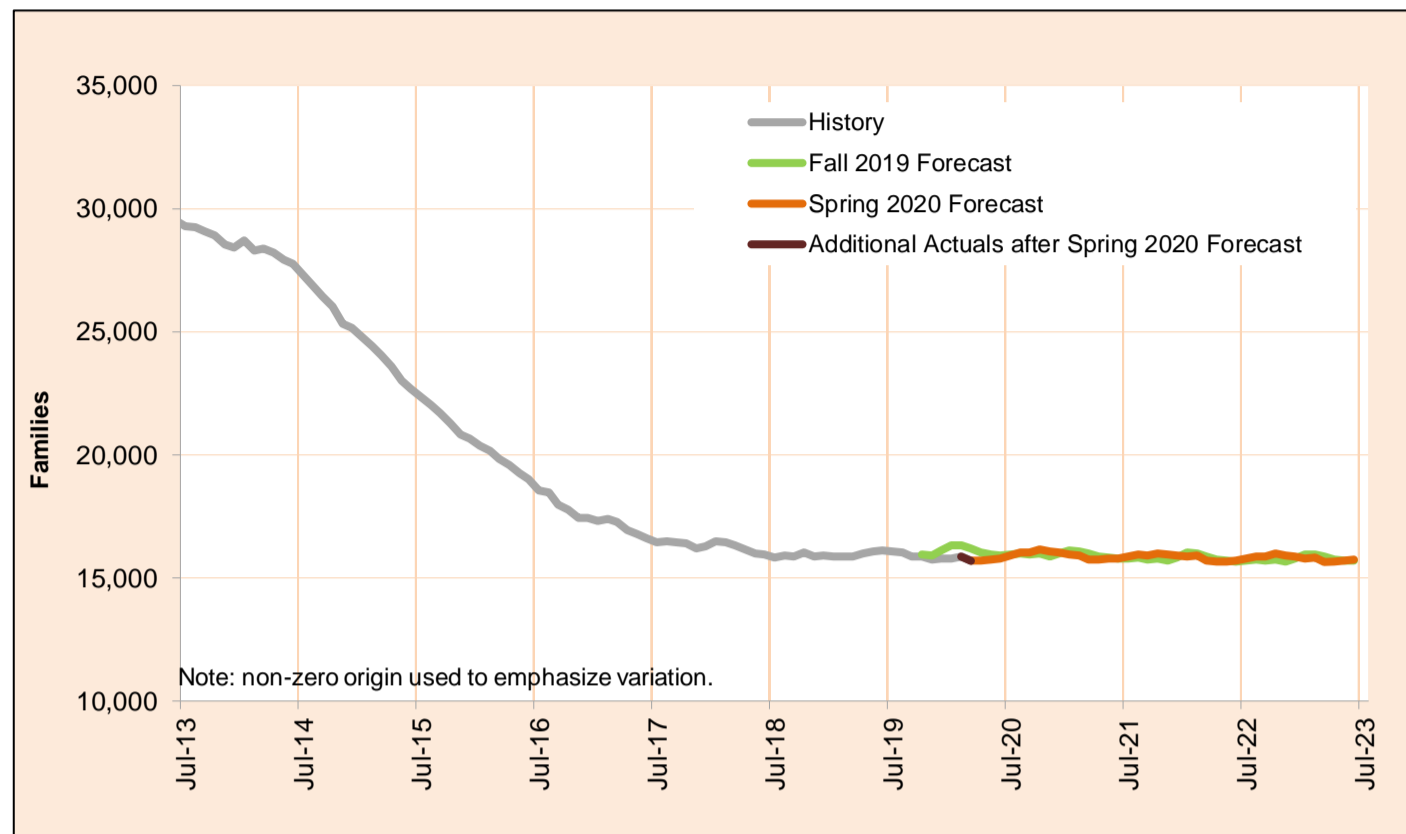


| Month | Actual | Spring 2020 Forecast | Over/Under Forecast (Spring 2020) | Fall 2019 Forecast | Over/Under Forecast (Fall 2019) |
|--------|--------|----------------------|-----------------------------------|--------------------|---------------------------------|
| May-19 | 18,840 | - | - | - | - |
| Jun-19 | 18,865 | - | - | - | - |
| Jul-19 | 18,783 | - | - | - | - |
| Aug-19 | 18,729 | - | - | - | - |
| Sep-19 | 18,541 | - | - | - | - |
| Oct-19 | 18,477 | - | - | 18,580 | -103 -0.6% |
| Nov-19 | 18,342 | - | - | 18,503 | -161 -0.9% |
| Dec-19 | 18,405 | - | - | 18,673 | -268 -1.4% |
| Jan-20 | 18,512 | - | - | 19,007 | -495 -2.6% |
| Feb-20 | 18,591 | - | - | 18,997 | -406 -2.1% |
| Mar-20 | 18,416 | 18,472 | -56 -0.3% | 18,882 | -466 -2.5% |
| Apr-20 | - | 18,481 | - | 18,742 | - |
| May-20 | - | 18,471 | - | 18,613 | - |

NOTE: In order to deal with an overlap in monthly data reporting between TANF and the after-TANF benefit known as Employment Payments, TANF caseload counts have been revised, starting in May 2016. In any month where an Employment Payment has been authorized, the TANF case has been removed from the caseload count. This eliminates the possibility of duplicate counts.

Total Temporary Assistance for Needy Families - One Parent

The Temporary Assistance for Needy Families (TANF) One Parent program provides services and cash grants to low-income families with one parent living in the home to help them become self-sufficient



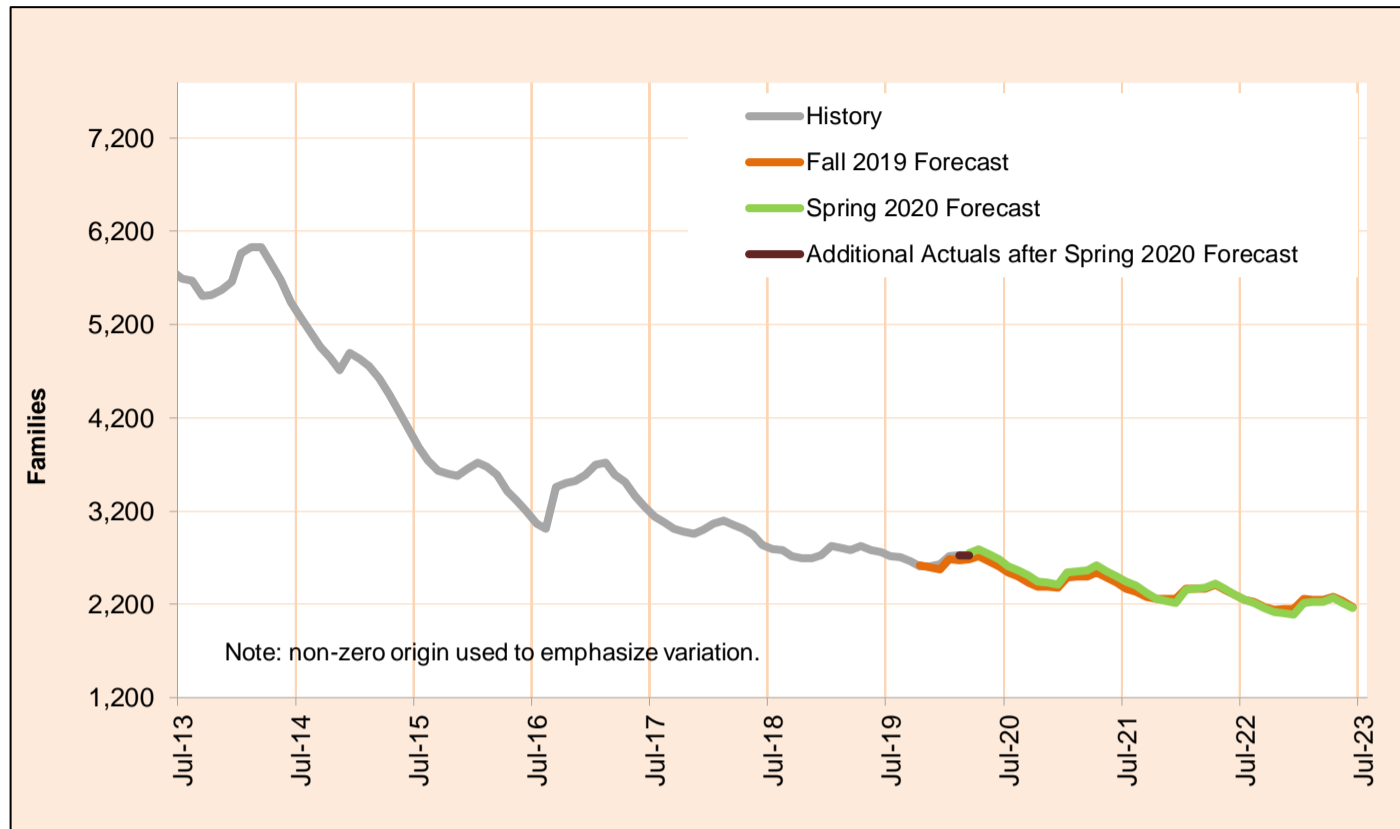
| Month | Actual | Spring 2020 Forecast | Over/Under Forecast (Spring 2020) | | Fall 2019 Forecast | Over/Under Forecast (Fall 2019) | |
|--------|--------|----------------------|-----------------------------------|-------|--------------------|---------------------------------|-------|
| May-19 | 16,060 | - | - | - | - | - | - |
| Jun-19 | 16,109 | - | - | - | - | - | - |
| Jul-19 | 16,067 | - | - | - | - | - | - |
| Aug-19 | 16,018 | - | - | - | - | - | - |
| Sep-19 | 15,880 | - | - | - | - | - | - |
| Oct-19 | 15,865 | - | - | - | 15,960 | -95 | -0.6% |
| Nov-19 | 15,734 | - | - | - | 15,906 | -172 | -1.1% |
| Dec-19 | 15,775 | - | - | - | 16,099 | -324 | -2.0% |
| Jan-20 | 15,794 | - | - | - | 16,325 | -531 | -3.3% |
| Feb-20 | 15,866 | - | - | - | 16,320 | -454 | -2.8% |
| Mar-20 | 15,692 | 15,723 | -31 | -0.2% | 16,202 | -510 | -3.1% |
| Apr-20 | - | 15,691 | - | - | 16,025 | - | - |
| May-20 | - | 15,735 | - | - | 15,952 | - | - |

NOTE: In order to deal with duplicate records between TANF and the after-TANF benefit known as Employment Payments, TANF caseload counts have been revised, starting in May 2016. In any month where an Employment Payment has been authorized, the TANF case has been removed from the caseload count.

APRIL 2020

Total Temporary Assistance for Needy Families - Two Parent

The Temporary Assistance for Needy Families (TANF) Two Parent program provides services and cash grants to low-income families with two parents in the home to help them become self-sufficient



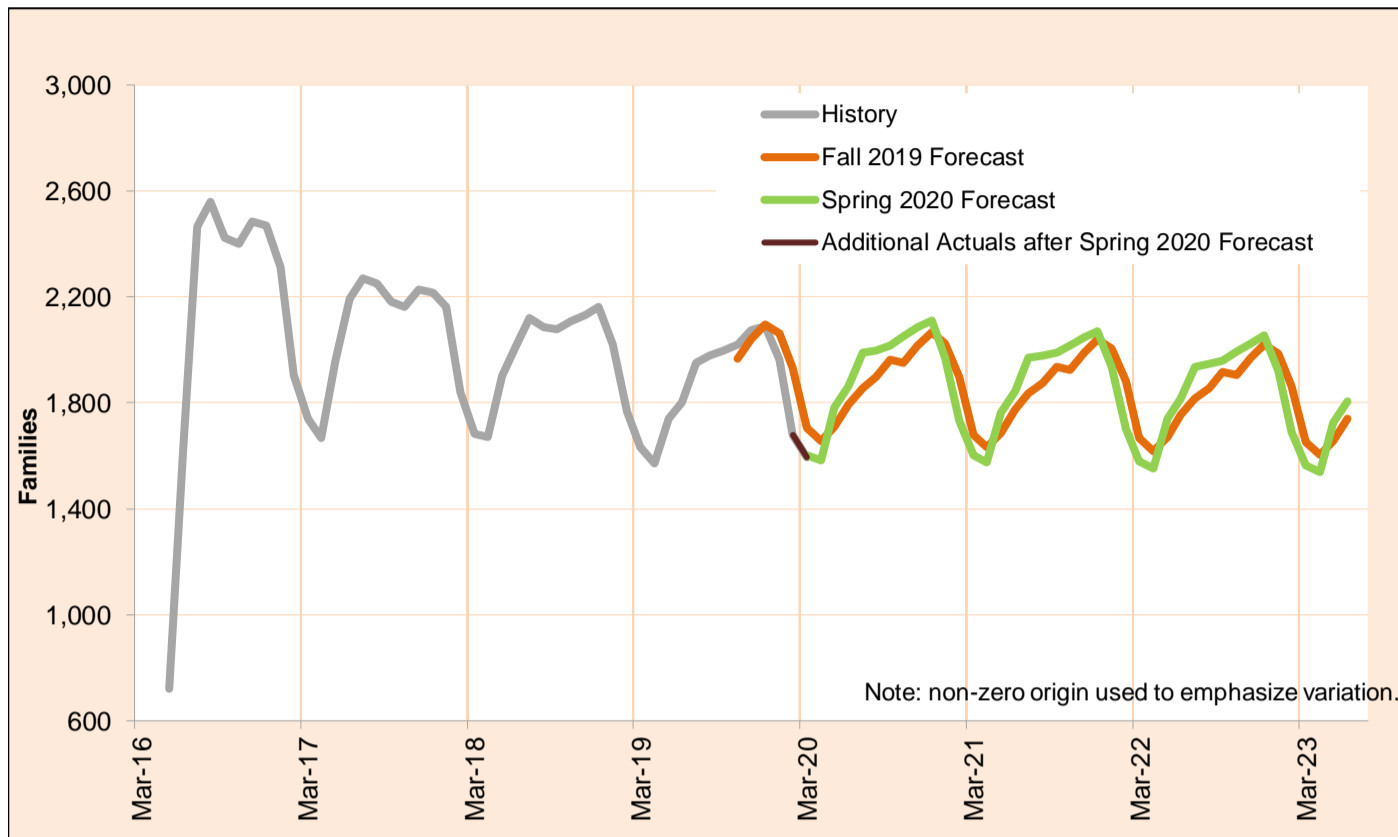
| Month | Actual | Spring 2020 Forecast | Over/Under Forecast (Spring 2020) | Fall 2019 Forecast | Over/Under Forecast (Fall 2019) |
|--------|--------|----------------------|-----------------------------------|--------------------|---------------------------------|
| May-19 | 2,780 | - | - | - | - |
| Jun-19 | 2,756 | - | - | - | - |
| Jul-19 | 2,716 | - | - | - | - |
| Aug-19 | 2,711 | - | - | - | - |
| Sep-19 | 2,661 | - | - | - | - |
| Oct-19 | 2,612 | - | - | 2,620 | -8 -0.3% |
| Nov-19 | 2,608 | - | - | 2,597 | 11 0.4% |
| Dec-19 | 2,630 | - | - | 2,574 | 56 2.2% |
| Jan-20 | 2,718 | - | - | 2,682 | 36 1.3% |
| Feb-20 | 2,725 | - | - | 2,677 | 48 1.8% |
| Mar-20 | 2,724 | 2,749 | -25 -0.9% | 2,680 | 44 1.6% |
| Apr-20 | - | 2,790 | - | 2,717 | - |
| May-20 | - | 2,736 | - | 2,661 | - |

NOTE: In order to deal with duplicate records between TANF and the after-TANF benefit known as Employment Payments, TANF caseload counts have been revised, starting in May 2016. In any month where an Employment Payment has been authorized, the TANF case has been removed from the caseload count.

APRIL 2020

TANF Employment Payments

TANF Employment Payments (TANF-EP) provides short-term financial assistance (3 months) for families after exiting TANF. Cases began transitioning to TANF-EP in May, 2016.

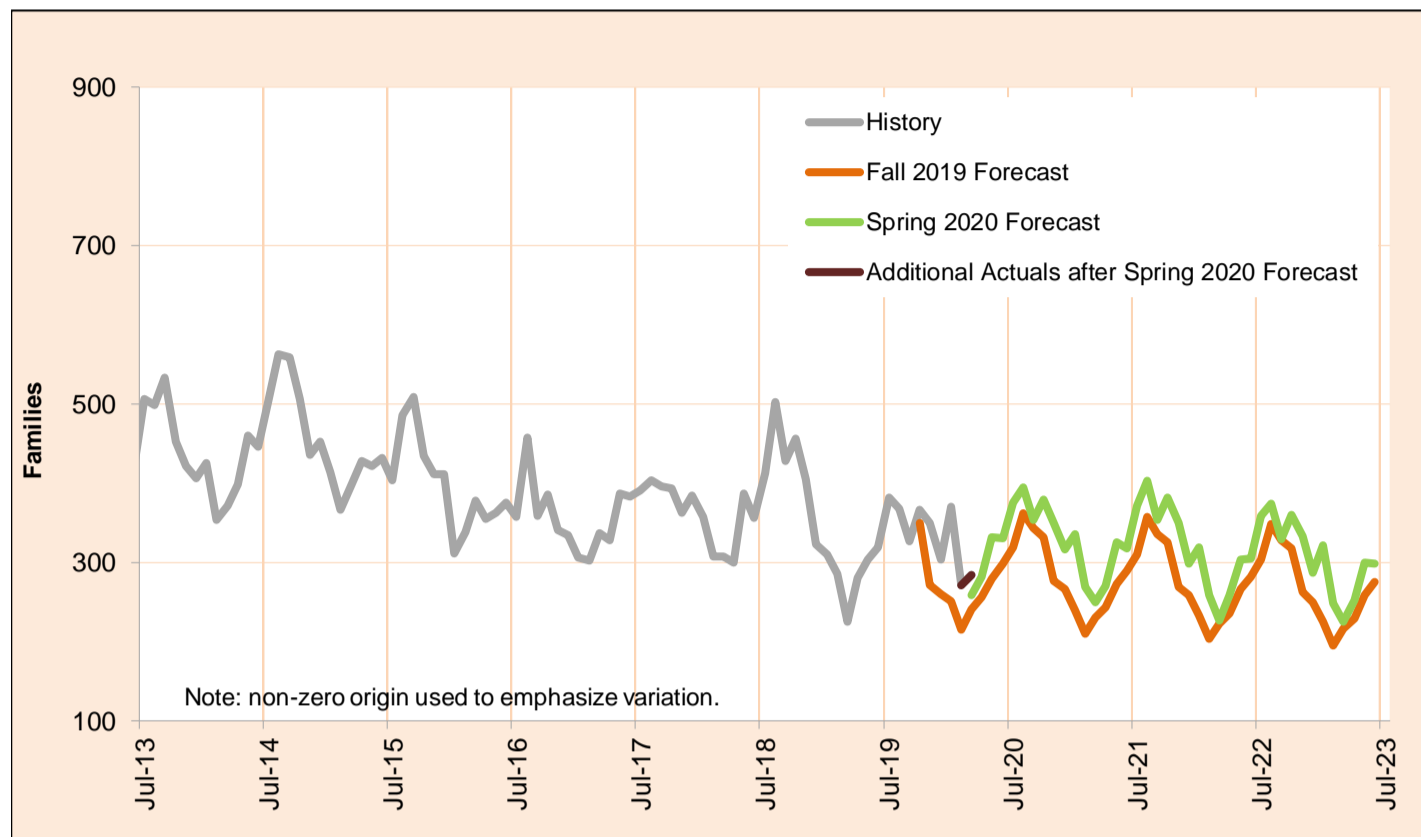


| Month | Actual | Spring 2020 Forecast | Over/Under Forecast (Spring 2020) | Fall 2019 Forecast | Over/Under Forecast (Fall 2019) |
|--------|--------|----------------------|-----------------------------------|--------------------|---------------------------------|
| May-19 | 1,739 | - | - | - | - |
| Jun-19 | 1,802 | - | - | - | - |
| Jul-19 | 1,950 | - | - | - | - |
| Aug-19 | 1,980 | - | - | - | - |
| Sep-19 | 1,999 | - | - | - | - |
| Oct-19 | 2,022 | - | - | 1,968 | 54 2.7% |
| Nov-19 | 2,075 | - | - | 2,040 | 35 1.7% |
| Dec-19 | 2,088 | - | - | 2,096 | -8 -0.4% |
| Jan-20 | 1,962 | - | - | 2,061 | -99 -4.8% |
| Feb-20 | 1,679 | - | - | 1,932 | -253 -13.1% |
| Mar-20 | 1,595 | 1,602 | -7 -0.4% | 1,706 | -111 -6.5% |
| Apr-20 | - | 1,585 | - | 1,655 | - |
| May-20 | - | 1,781 | - | 1,708 | - |

APRIL 2020

Temporary Assistance for Domestic Violence Survivors-With Payment

Temporary Assistance for Domestic Violence Survivors (TA-DVS) provides short-term financial assistance (up to 90 days) for individuals fleeing an abusive partner or family member.

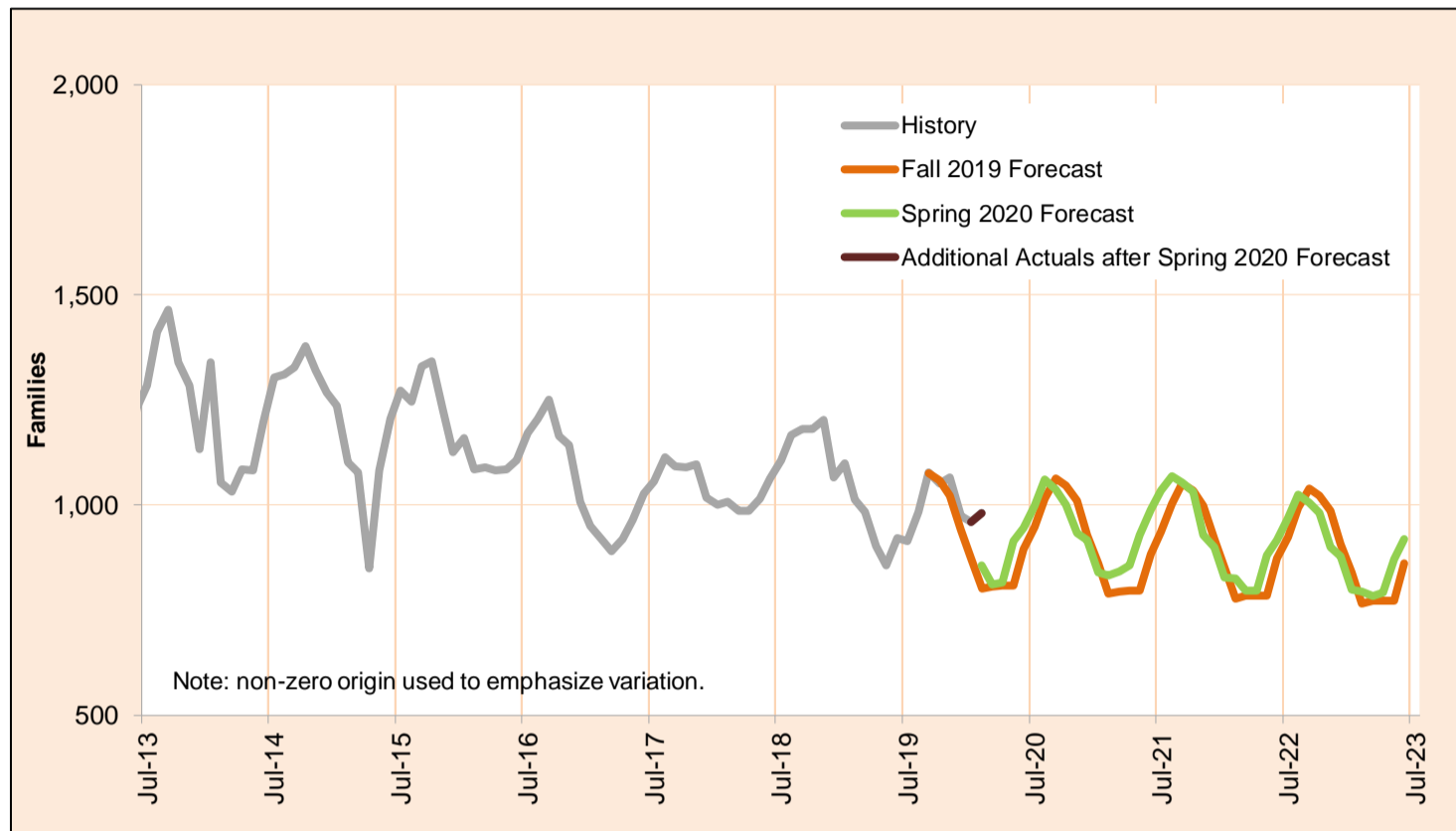


| Month | Actual | Spring 2020 Forecast | Over/Under Forecast (Spring 2020) | Fall 2019 Forecast | Over/Under Forecast (Fall 2019) |
|--------|--------|----------------------|-----------------------------------|--------------------|---------------------------------|
| May-19 | 304 | - | - | - | - |
| Jun-19 | 319 | - | - | - | - |
| Jul-19 | 382 | - | - | - | - |
| Aug-19 | 368 | - | - | - | - |
| Sep-19 | 326 | - | - | - | - |
| Oct-19 | 367 | - | - | 350 | 17 4.9% |
| Nov-19 | 350 | - | - | 272 | 78 28.7% |
| Dec-19 | 304 | - | - | 260 | 44 16.9% |
| Jan-20 | 370 | - | - | 251 | 119 47.4% |
| Feb-20 | 271 | - | - | 215 | 56 26.0% |
| Mar-20 | 284 | 259 | 25 9.7% | 241 | 43 17.8% |
| Apr-20 | - | 282 | - | 256 | - |
| May-20 | - | 332 | - | 279 | - |

APRIL 2020

Temporary Assistance for Domestic Violence Survivors-Without Payment

Temporary Assistance for Domestic Violence Survivors Without Payment represents individuals fleeing an abusive partner or family member who did not accept short-term financial assistance, but did receive other forms of aid including referrals to other services.

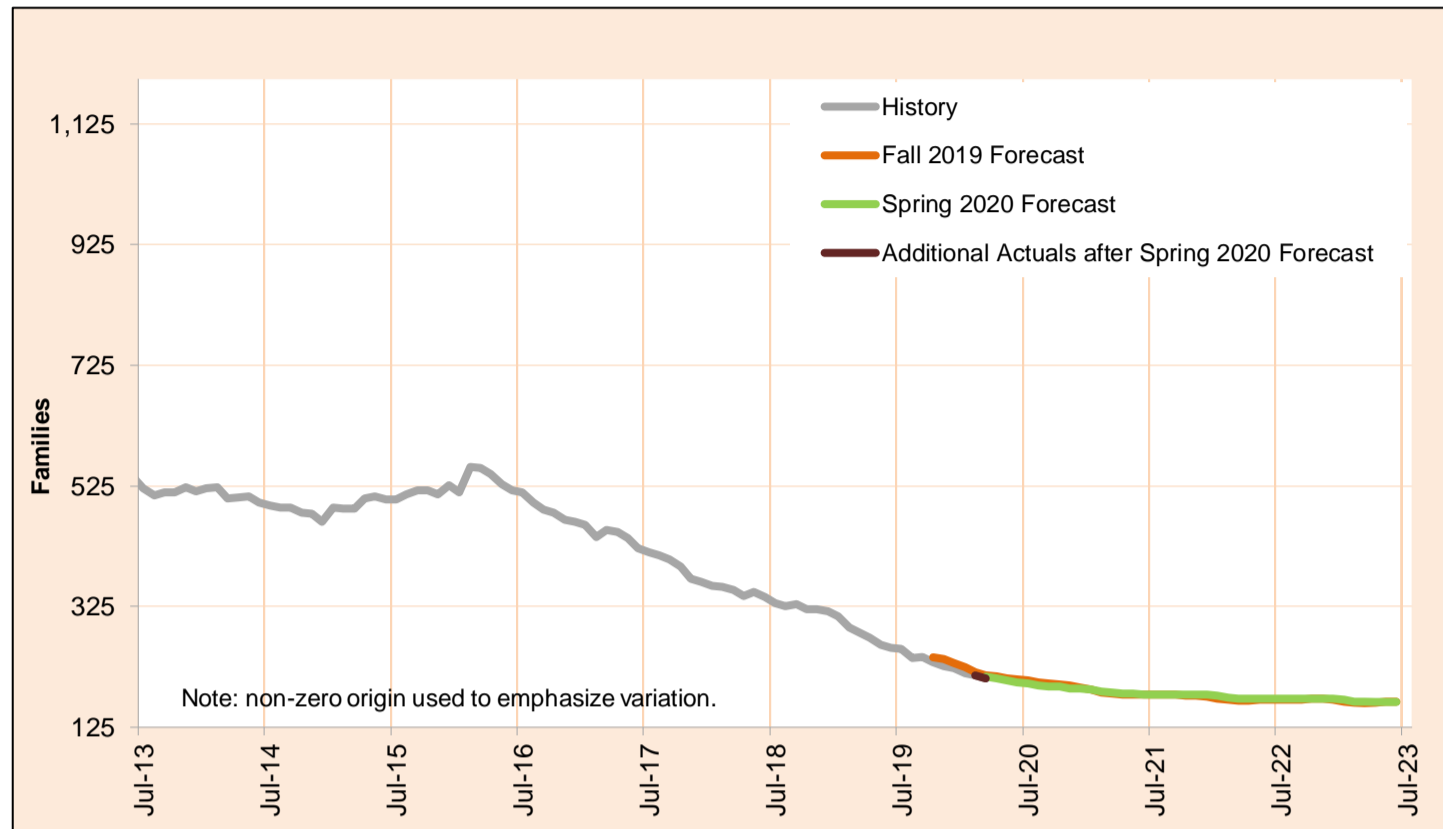


| Month | Actual | Spring 2020 Forecast | Over/Under Forecast (Spring 2020) | Fall 2019 Forecast | Over/Under Forecast (Fall 2019) |
|--------|--------|----------------------|-----------------------------------|--------------------|---------------------------------|
| May-19 | 856 | - | - | - | - |
| Jun-19 | 921 | - | - | - | - |
| Jul-19 | 914 | - | - | - | - |
| Aug-19 | 984 | - | - | - | - |
| Sep-19 | 1,077 | - | - | 1,076 | 1 0.1% |
| Oct-19 | 1,052 | - | - | 1,058 | -6 -0.6% |
| Nov-19 | 1,067 | - | - | 1,023 | 44 4.3% |
| Dec-19 | 975 | - | - | 942 | 33 3.5% |
| Jan-20 | 960 | - | - | 874 | 86 9.8% |
| Feb-20 | 981 | 857 | 124 14.5% | 801 | 180 22.5% |
| Mar-20 | - | 811 | - | 807 | - |
| Apr-20 | - | 817 | - | 808 | - |
| May-20 | - | 915 | - | 808 | - |

APRIL 2020

Pre-SSI

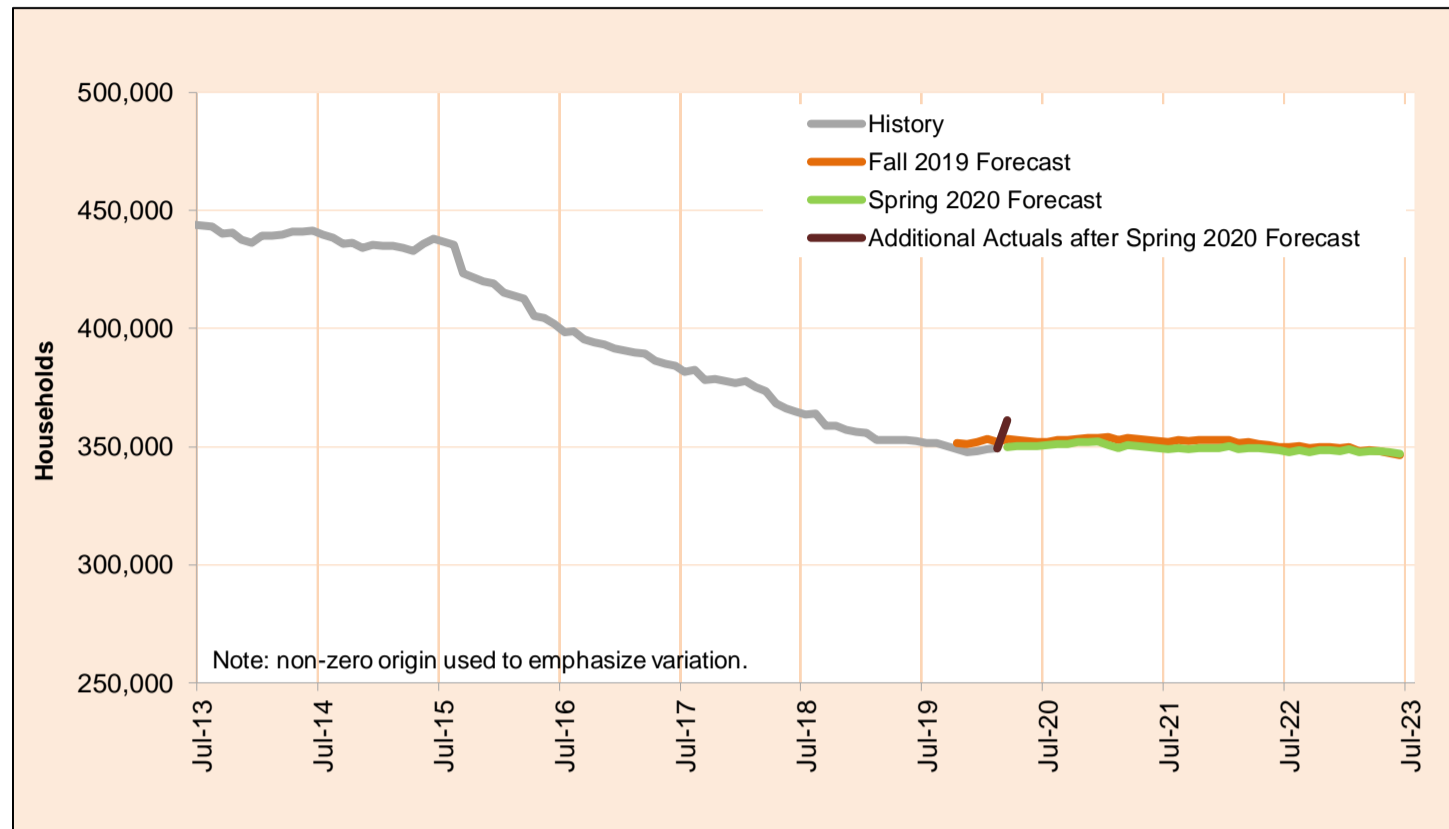
Pre-SSI provides temporary benefits for families while they apply for SSI.



| Month | Actual | Spring 2020 Forecast | Over/Under Forecast (Spring 2020) | | Fall 2019 Forecast | Over/Under Forecast (Fall 2019) | |
|--------|--------|----------------------|-----------------------------------|-------|--------------------|---------------------------------|-------|
| May-19 | 261 | - | - | - | - | - | - |
| Jun-19 | 257 | - | - | - | - | - | - |
| Jul-19 | 255 | - | - | - | - | - | - |
| Aug-19 | 240 | - | - | - | - | - | - |
| Sep-19 | 241 | - | - | - | - | - | - |
| Oct-19 | 233 | - | - | - | 241 | -8 | -3.3% |
| Nov-19 | 227 | - | - | - | 238 | -11 | -4.6% |
| Dec-19 | 223 | - | - | - | 231 | -8 | -3.5% |
| Jan-20 | 215 | - | - | - | 224 | -9 | -4.0% |
| Feb-20 | 211 | - | - | - | 217 | -6 | -2.8% |
| Mar-20 | 206 | 209 | -3 | -1.4% | 212 | -6 | -2.8% |
| Apr-20 | - | 206 | - | - | 209 | - | - |
| May-20 | - | 202 | - | - | 206 | - | - |

Total Supplemental Nutrition Assistance Programs

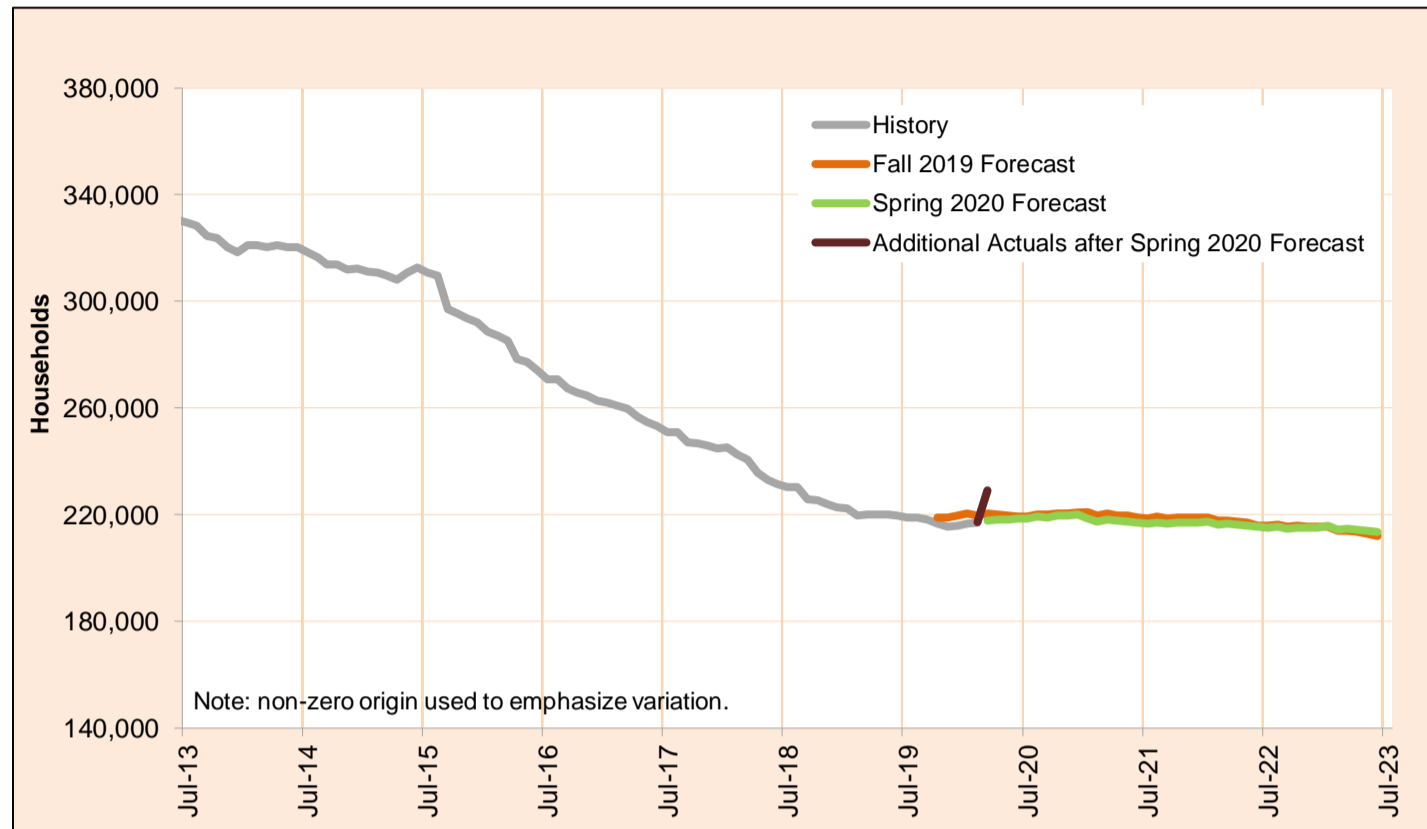
This program supplements food budgets for low-income families, individuals and people receiving public assistance and seniors and people with disabilities.



| Month | Actual | Spring 2020 Forecast | Over/Under Forecast (Spring 2020) | | Fall 2019 Forecast | Over/Under Forecast (Fall 2019) | |
|--------|---------|----------------------|-----------------------------------|------|--------------------|---------------------------------|-------|
| May-19 | 352,780 | - | - | - | - | - | - |
| Jun-19 | 352,207 | - | - | - | - | - | - |
| Jul-19 | 351,545 | - | - | - | - | - | - |
| Aug-19 | 351,332 | - | - | - | - | - | - |
| Sep-19 | 350,396 | - | - | - | - | - | - |
| Oct-19 | 348,933 | - | - | - | 351,488 | -2,555 | -0.7% |
| Nov-19 | 347,794 | - | - | - | 351,265 | -3,471 | -1.0% |
| Dec-19 | 348,157 | - | - | - | 352,043 | -3,886 | -1.1% |
| Jan-20 | 348,772 | - | - | - | 353,065 | -4,293 | -1.2% |
| Feb-20 | 349,244 | - | - | - | 352,134 | -2,890 | -0.8% |
| Mar-20 | 361,221 | 349,777 | 11,444 | 3.3% | 353,194 | 8,027 | 2.3% |
| Apr-20 | - | 350,144 | - | - | 352,647 | - | - |
| May-20 | - | 350,042 | - | - | 352,298 | - | - |

SNAP: Self Sufficiency

This program supplements food budgets for low-income families, individuals and seniors and people with disabilities.

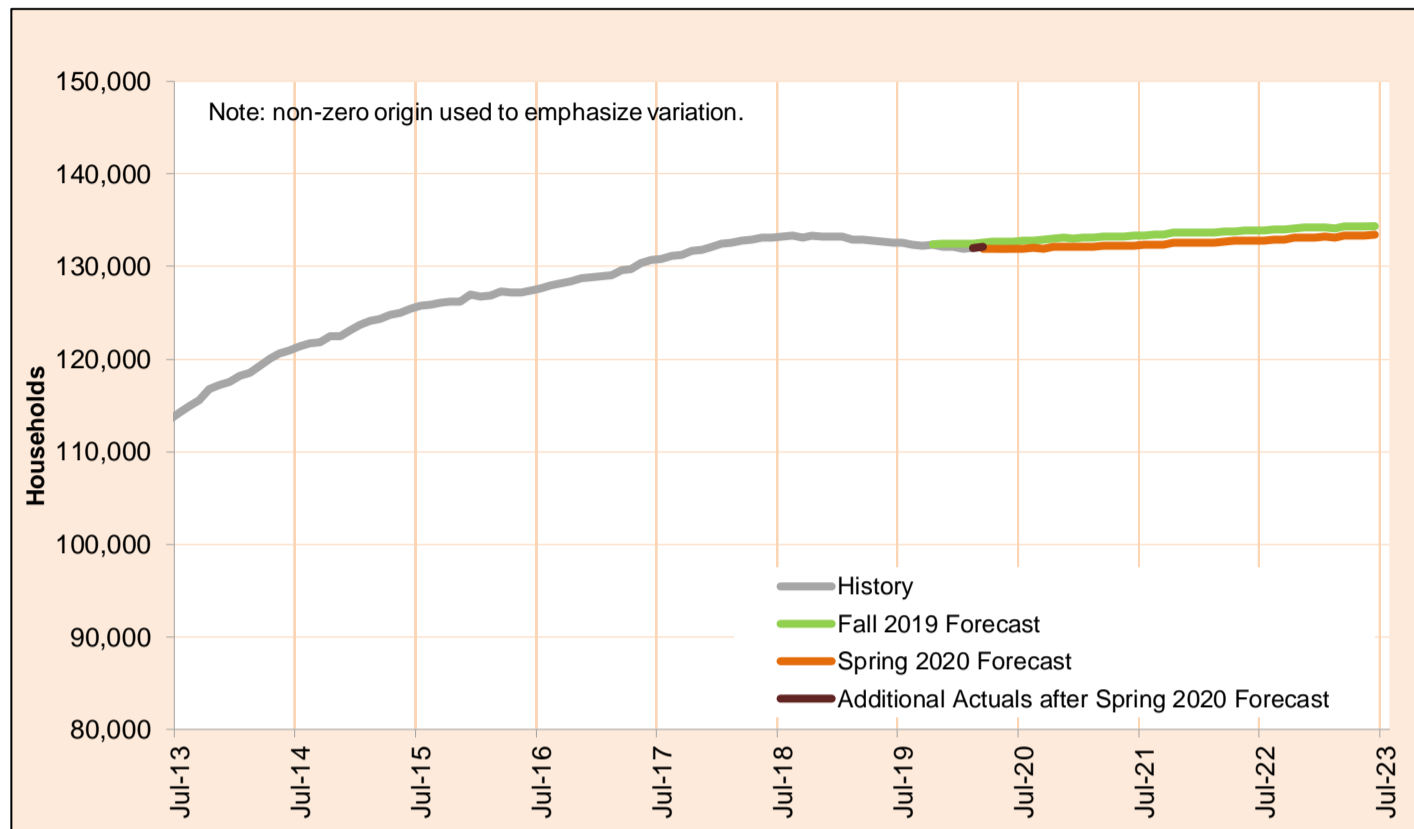


| Month | Actual | Spring 2020 Forecast | Over/Under Forecast (Spring 2020) | | Fall 2019 Forecast | Over/Under Forecast (Fall 2019) | |
|--------|---------|----------------------|-----------------------------------|------|--------------------|---------------------------------|-------|
| May-19 | 220,064 | - | - | - | - | - | - |
| Jun-19 | 219,596 | - | - | - | - | - | - |
| Jul-19 | 218,938 | - | - | - | - | - | - |
| Aug-19 | 218,981 | - | - | - | - | - | - |
| Sep-19 | 218,162 | - | - | - | - | - | - |
| Oct-19 | 216,539 | - | - | - | 219,086 | -2,547 | -1.2% |
| Nov-19 | 215,614 | - | - | - | 218,809 | -3,195 | -1.5% |
| Dec-19 | 216,050 | - | - | - | 219,604 | -3,554 | -1.6% |
| Jan-20 | 216,854 | - | - | - | 220,574 | -3,720 | -1.7% |
| Feb-20 | 217,245 | - | - | - | 219,641 | -2,396 | -1.1% |
| Mar-20 | 229,088 | 217,840 | 11,248 | 5.2% | 220,595 | 8,493 | 3.9% |
| Apr-20 | - | 218,210 | - | - | 219,995 | - | - |
| May-20 | - | 218,138 | - | - | 219,636 | - | - |

APRIL 2020

SNAP: Aging and People with Disabilities

This program supplements food budgets for low-income families, individuals and seniors and people with disabilities.



| Month | Actual | Spring 2020 Forecast | Over/Under Forecast (Spring 2020) | | Fall 2019 Forecast | Over/Under Forecast (Fall 2019) | |
|--------|---------|----------------------|-----------------------------------|------|--------------------|---------------------------------|-------|
| May-19 | 132,716 | - | - | - | - | - | - |
| Jun-19 | 132,611 | - | - | - | - | - | - |
| Jul-19 | 132,607 | - | - | - | - | - | - |
| Aug-19 | 132,351 | - | - | - | - | - | - |
| Sep-19 | 132,234 | - | - | - | - | - | - |
| Oct-19 | 132,394 | - | - | - | 132,402 | -8 | 0.0% |
| Nov-19 | 132,180 | - | - | - | 132,456 | -276 | -0.2% |
| Dec-19 | 132,107 | - | - | - | 132,439 | -332 | -0.3% |
| Jan-20 | 131,918 | - | - | - | 132,491 | -573 | -0.4% |
| Feb-20 | 131,999 | - | - | - | 132,493 | -494 | -0.4% |
| Mar-20 | 132,133 | 131,937 | 196 | 0.1% | 132,599 | -466 | -0.4% |
| Apr-20 | - | 131,934 | - | - | 132,652 | - | - |
| May-20 | - | 131,904 | - | - | 132,662 | - | - |