

Monthly Caseload Forecast Variance Report
 Department of Human Services
 Self Sufficiency Programs

MARCH 2020

Overall, Self Sufficiency Program caseload is tracking with Fall 2019 forecast. Both SNAP and TANF February cases have slightly increased compared to the previous month. TANF has reached pre-recession lows, but SNAP is much higher than it was in 2008.

Total Temporary Assistance for Needy Families

Month	Actual	Fall 2019 Forecast	Over/Under Forecast	%
Oct-19	18,477	18,580	-103	-0.6%
Nov-19	18,342	18,503	-161	-0.9%
Dec-19	18,405	18,673	-268	-1.4%
Jan-20	18,512	19,007	-495	-2.6%
Feb-20	18,591	18,997	-406	-2.1%
Mar-20	-	18,882	-	-
Apr-20	-	18,742	-	-

TANF: One-Parent

Month	Actual	Fall 2019 Forecast	Over/Under Forecast	%
Oct-19	15,865	15,960	-95	-0.6%
Nov-19	15,734	15,906	-172	-1.1%
Dec-19	15,775	16,099	-324	-2.0%
Jan-20	15,794	16,325	-531	-3.3%
Feb-20	15,866	16,320	-454	-2.8%
Mar-20	-	16,202	-	-
Apr-20	-	16,025	-	-

TANF: Two-Parent

Month	Actual	Fall 2019 Forecast	Over/Under Forecast	%
Oct-19	2,612	2,620	-8	-0.3%
Nov-19	2,608	2,597	11	0.4%
Dec-19	2,630	2,574	56	2.2%
Jan-20	2,718	2,682	36	1.3%
Feb-20	2,725	2,677	48	1.8%
Mar-20	-	2,680	-	-
Apr-20	-	2,717	-	-

TANF Employment Payments

Month	Actual	Fall 2019 Forecast	Over/Under Forecast	%
Oct-19	2,022	1,968	54	2.7%
Nov-19	2,075	2,040	35	1.7%
Dec-19	2,088	2,096	-8	-0.4%
Jan-20	1,962	2,061	-99	-4.8%
Feb-20	1,679	1,932	-253	-13.1%
Mar-20	-	1,706	-	-
Apr-20	-	1,655	-	-

Temporary Assistance for Domestic Violence Survivors with Payment (Families)

Month	Actual	Fall 2019 Forecast	Over/Under Forecast	%
Oct-19	367	350	17	4.9%
Nov-19	350	272	78	28.7%
Dec-19	304	260	44	16.9%
Jan-20	370	251	119	47.4%
Feb-20	271	215	56	26.0%
Mar-20	-	241	-	-
Apr-20	-	256	-	-

Temporary Assistance for Domestic Violence Survivors without Payment (Families)

Month	Actual	Fall 2019 Forecast	Over/Under Forecast	%
Sep-19	1,077	1,076	1	0.1%
Oct-19	1,052	1,058	-6	-0.6%
Nov-19	1,067	1,023	44	4.3%
Dec-19	975	942	33	3.5%
Jan-20	960	874	86	9.8%
Feb-20	-	801	-	-
Mar-20	-	807	-	-

Pre-SSI

Month	Actual	Fall 2019 Forecast	Over/Under Forecast	%
Oct-19	233	241	-8	-3.3%
Nov-19	227	238	-11	-4.6%
Dec-19	223	231	-8	-3.5%
Jan-20	215	224	-9	-4.0%
Feb-20	211	217	-6	-2.8%
Mar-20	-	212	-	-
Apr-20	-	209	-	-

Total Supplemental Nutrition Assistance Programs

Month	Actual	Fall 2019 Forecast	Over/Under Forecast	%
Oct-19	348,933	351,488	-2,555	-0.7%
Nov-19	347,794	351,265	-3,471	-1.0%
Dec-19	348,157	352,043	-3,886	-1.1%
Jan-20	348,772	353,065	-4,293	-1.2%
Feb-20	349,244	352,134	-2,890	-0.8%
Mar-20	-	353,194	-	-
Apr-20	-	352,647	-	-

Monthly Caseload Forecast Variance Report
 Department of Human Services
 Self Sufficiency Programs

MARCH 2020

SNAP: Aging and People with Disabilities					SNAP: Self Sufficiency				
Month	Actual	Fall 2019 Forecast	Over/Under Forecast	%	Month	Actual	Fall 2019 Forecast	Over/Under Forecast	%
Oct-19	132,394	132,402	-8	0.0%	Oct-19	216,539	219,086	-2,547	-1.2%
Nov-19	132,180	132,456	-276	-0.2%	Nov-19	215,614	218,809	-3,195	-1.5%
Dec-19	132,107	132,439	-332	-0.3%	Dec-19	216,050	219,604	-3,554	-1.6%
Jan-20	131,918	132,491	-573	-0.4%	Jan-20	216,854	220,574	-3,720	-1.7%
Feb-20	131,999	132,493	-494	-0.4%	Feb-20	217,245	219,641	-2,396	-1.1%
Mar-20	-	132,599	-	-	Mar-20	-	220,595	-	-
Apr-20	-	132,652	-	-	Apr-20	-	219,995	-	-

Employment Related Daycare (Families)

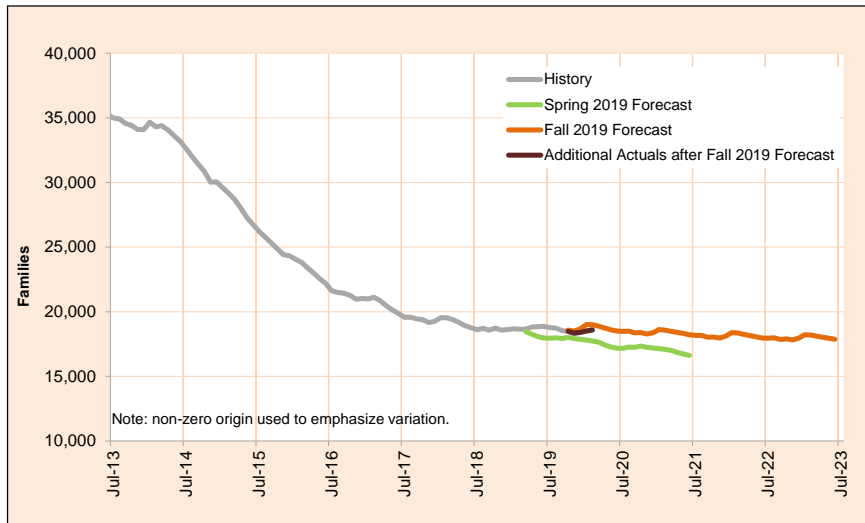
Month	Actual	Forecast Discontinued
Oct-19	7,744	
Nov-19	7,636	
Dec-19	7,407	
Jan-20	7,293	
Feb-20	7,312	
Mar-20	-	
Apr-20	-	

Monthly Caseload Forecast Variance Report
 Department of Human Services
 Self Sufficiency Programs

MARCH 2020

Total Temporary Assistance for Needy Families

The Temporary Assistance for Needy Families (TANF) program provides services and cash grants to low-income families with children to help them become self-sufficient.



Month	Actual	Fall 2019 Forecast	Over/Under Forecast (Fall 2019)		Spring 2019 Forecast	Over/Under Forecast (Spring 2019)	
Apr-19	18,822	-	-	-	18,259	563	3.1%
May-19	18,840	-	-	-	18,083	757	4.2%
Jun-19	18,865	-	-	-	17,973	892	5.0%
Jul-19	18,783	-	-	-	17,949	834	4.6%
Aug-19	18,729	-	-	-	17,984	745	4.1%
Sep-19	18,541	-	-	-	17,928	613	3.4%
Oct-19	18,477	18,580	-103	-0.6%	18,020	457	2.5%
Nov-19	18,342	18,503	-161	-0.9%	17,926	416	2.3%
Dec-19	18,405	18,673	-268	-1.4%	17,878	527	2.9%
Jan-20	18,512	19,007	-495	-2.6%	17,813	699	3.9%
Feb-20	18,591	18,997	-406	-2.1%	17,733	858	4.8%
Mar-20	-	18,882	-	-	17,648	-	-
Apr-20	-	18,742	-	-	17,439	-	-

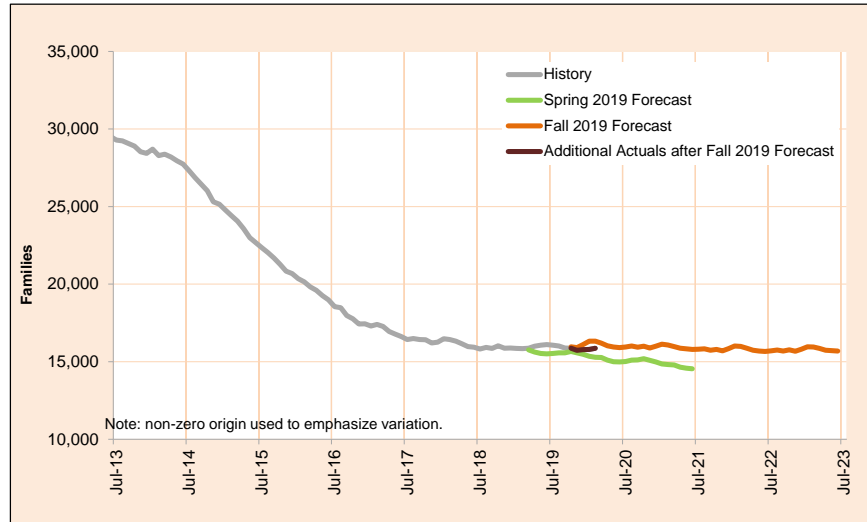
NOTE: In order to deal with an overlap in monthly data reporting between TANF and the after-TANF benefit known as Employment Payments, TANF caseload counts have been revised, starting in May 2016. In any month where an Employment Payment has been authorized, the TANF case has been removed from the caseload count. This eliminates the possibility of duplicate counts.

Monthly Caseload Forecast Variance Report
 Department of Human Services
 Self Sufficiency Programs

MARCH 2020

Total Temporary Assistance for Needy Families - One Parent

The Temporary Assistance for Needy Families (TANF) One Parent program provides services and cash grants to low-income families with one parent living in the home to help them become self-sufficient



Month	Actual	Fall 2019 Forecast	Over/Under Forecast (Fall 2019)		Spring 2019 Forecast	Over/Under Forecast (Spring 2019)	
Apr-19	15,997	-	-	-	15,626	371	2.4%
May-19	16,060	-	-	-	15,526	534	3.4%
Jun-19	16,109	-	-	-	15,511	598	3.9%
Jul-19	16,067	-	-	-	15,531	536	3.5%
Aug-19	16,018	-	-	-	15,569	449	2.9%
Sep-19	15,880	-	-	-	15,568	312	2.0%
Oct-19	15,865	15,960	-95	-0.6%	15,664	201	1.3%
Nov-19	15,734	15,906	-172	-1.1%	15,566	168	1.1%
Dec-19	15,775	16,099	-324	-2.0%	15,475	300	1.9%
Jan-20	15,794	16,325	-531	-3.3%	15,355	439	2.9%
Feb-20	15,866	16,320	-454	-2.8%	15,291	575	3.8%
Mar-20	-	16,202	-	-	15,266	-	-
Apr-20	-	16,025	-	-	15,104	-	-

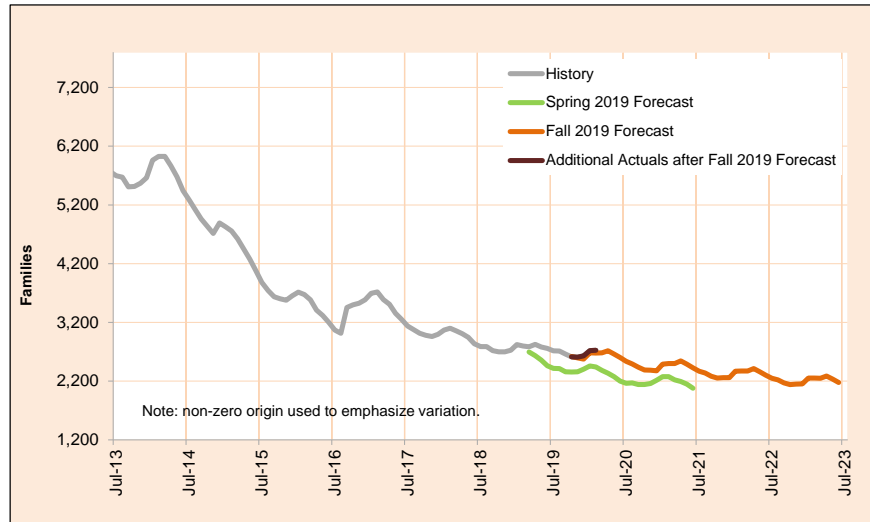
NOTE: In order to deal with duplicate records between TANF and the after-TANF benefit known as Employment Payments, TANF caseload counts have been revised, starting in May 2016. In any month where an Employment Payment has been authorized, the TANF case has been removed from the caseload count.

Monthly Caseload Forecast Variance Report
 Department of Human Services
 Self Sufficiency Programs

MARCH 2020

Total Temporary Assistance for Needy Families - Two Parent

The Temporary Assistance for Needy Families (TANF) Two Parent program provides services and cash grants to low-income families with two parents in the home to help them become self-sufficient



Month	Actual	Fall 2019 Forecast	Over/Under Forecast (Fall 2019)		Spring 2019 Forecast	Over/Under Forecast (Spring 2019)	
Apr-19	2,825	-	-	-	2,633	192	7.3%
May-19	2,780	-	-	-	2,557	223	8.7%
Jun-19	2,756	-	-	-	2,462	294	11.9%
Jul-19	2,716	-	-	-	2,418	298	12.3%
Aug-19	2,711	-	-	-	2,415	296	12.3%
Sep-19	2,661	-	-	-	2,360	301	12.8%
Oct-19	2,612	2,620	-8	-0.3%	2,356	256	10.9%
Nov-19	2,608	2,597	11	0.4%	2,360	248	10.5%
Dec-19	2,630	2,574	56	2.2%	2,403	227	9.4%
Jan-20	2,718	2,682	36	1.3%	2,458	260	10.6%
Feb-20	2,725	2,677	48	1.8%	2,442	283	11.6%
Mar-20	-	2,680	-	-	2,382	-	-
Apr-20	-	2,717	-	-	2,335	-	-

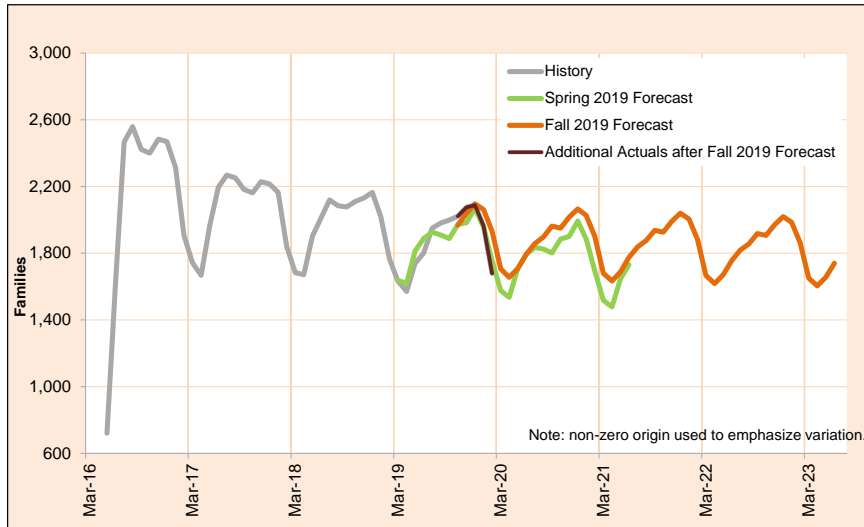
NOTE: In order to deal with duplicate records between TANF and the after-TANF benefit known as Employment Payments, TANF caseload counts have been revised, starting in May 2016. In any month where an Employment Payment has been authorized, the TANF case has been removed from the caseload count.

Monthly Caseload Forecast Variance Report
 Department of Human Services
 Self Sufficiency Programs

MARCH 2020

TANF Employment Payments

TANF Employment Payments (TANF-EP) provides short-term financial assistance (3 months) for families after exiting TANF. Cases began transitioning to TANF-EP in May, 2016.



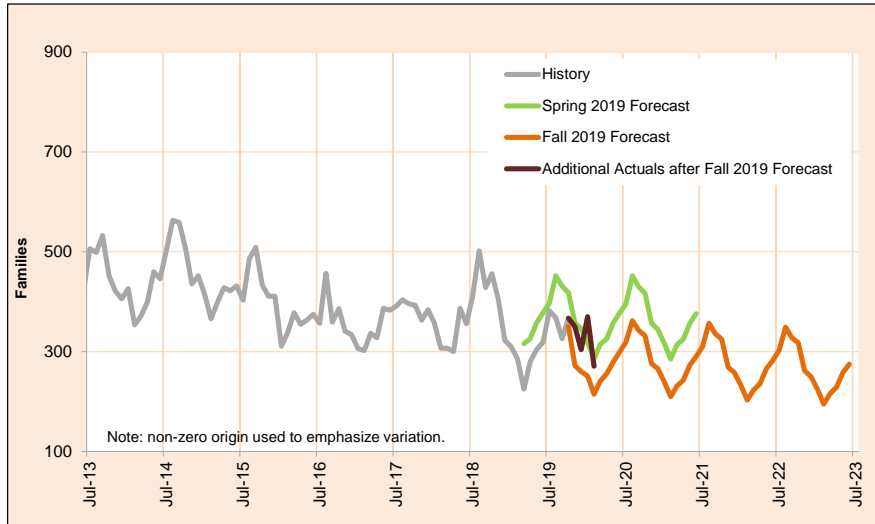
Month	Actual	Fall 2019 Forecast	Over/Under Forecast (Fall 2019)		Spring 2019 Forecast	Over/Under Forecast (Spring 2019)	
Apr-19	1,571	-	-	-	1,620	-49	-3.0%
May-19	1,739	-	-	-	1,812	-73	-4.0%
Jun-19	1,802	-	-	-	1,889	-87	-4.6%
Jul-19	1,950	-	-	-	1,926	24	1.2%
Aug-19	1,950	-	-	-	1,909	41	2.1%
Sep-19	1,999	-	-	-	1,887	112	5.9%
Oct-19	2,022	1,968	54	2.7%	1,972	50	2.5%
Nov-19	2,075	2,040	35	1.7%	1,983	92	4.6%
Dec-19	2,088	2,096	-8	-0.4%	2,070	18	0.9%
Jan-20	1,962	2,061	-99	-4.8%	1,956	6	0.3%
Feb-20	1,679	1,932	-253	-13.1%	1,754	-75	-4.3%
Mar-20	-	1,706	-	-	1,576	-	-
Apr-20	-	1,655	-	-	1,535	-	-

Monthly Caseload Forecast Variance Report
 Department of Human Services
 Self Sufficiency Programs

MARCH 2020

Temporary Assistance for Domestic Violence Survivors-With Payment

Temporary Assistance for Domestic Violence Survivors (TA-DVS) provides short-term financial assistance (up to 90 days) for individuals fleeing an abusive partner or family member.



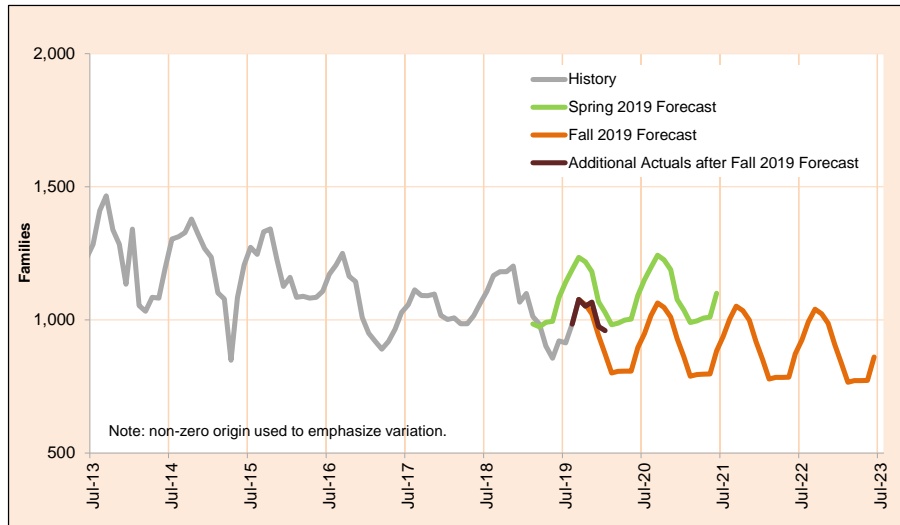
Month	Actual	Fall 2019 Forecast	Over/Under Forecast (Fall 2019)		Spring 2019 Forecast	Over/Under Forecast (Spring 2019)	
Apr-19	280	-	-	-	326	-46	-14.1%
May-19	304	-	-	-	358	-54	-15.1%
Jun-19	319	-	-	-	378	-59	-15.6%
Jul-19	382	-	-	-	397	-15	-3.8%
Aug-19	368	-	-	-	452	-84	-18.6%
Sep-19	326	-	-	-	431	-105	-24.4%
Oct-19	367	350	17	4.9%	418	-51	-12.2%
Nov-19	350	272	78	28.7%	358	-8	-2.2%
Dec-19	304	260	44	16.9%	346	-42	-12.1%
Jan-20	370	251	119	47.4%	318	52	16.4%
Feb-20	271	215	56	26.0%	286	-15	-5.2%
Mar-20	-	241	-	-	315	-	-
Apr-20	-	256	-	-	326	-	-

Monthly Caseload Forecast Variance Report
 Department of Human Services
 Self Sufficiency Programs

MARCH 2020

Temporary Assistance for Domestic Violence Survivors-Without Payment

Temporary Assistance for Domestic Violence Survivors Without Payment represents individuals fleeing an abusive partner or family member who did not accept short-term financial assistance, but did receive other forms of aid including referrals to other services.



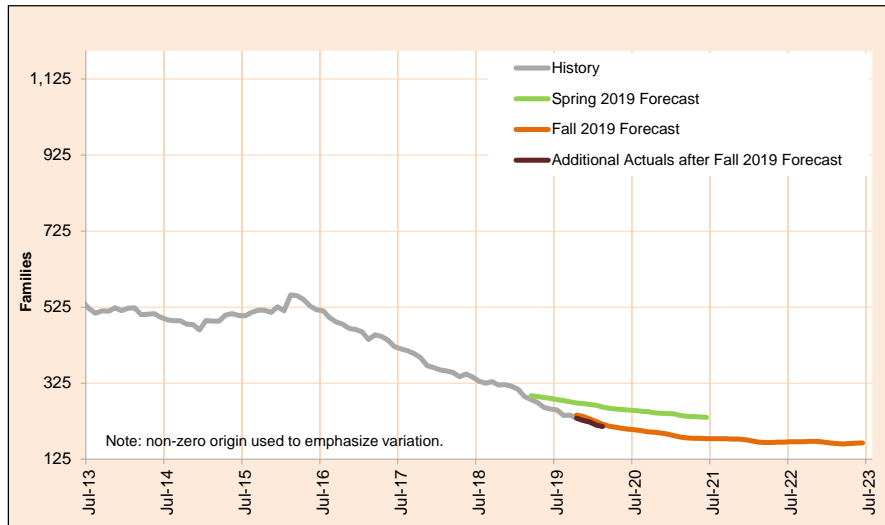
Month	Actual	Fall 2019 Forecast	Over/Under Forecast (Fall 2019)		Spring 2019 Forecast	Over/Under Forecast (Spring 2019)	
Apr-19	902	-	-	-	991	-89	-9.0%
May-19	856	-	-	-	995	-139	-14.0%
Jun-19	921	-	-	-	1,084	-163	-15.0%
Jul-19	914	-	-	-	1,142	-228	-20.0%
Aug-19	984	-	-	-	1,189	-205	-17.2%
Sep-19	1,077	1,076	1	0%	1,235	-158	-12.8%
Oct-19	1,052	1,058	-6	-1%	1,218	-166	-13.6%
Nov-19	1,067	1,023	44	4%	1,181	-114	-9.7%
Dec-19	975	942	33	4%	1,068	-93	-8.7%
Jan-20	960	874	86	10%	1,029	-69	-6.7%
Feb-20	-	801	-	-	982	-	-
Mar-20	-	807	-	-	988	-	-
Apr-20	-	808	-	-	999	-	-

Monthly Caseload Forecast Variance Report
 Department of Human Services
 Self Sufficiency Programs

MARCH 2020

Pre-SSI

Pre-SSI provides temporary benefits for families while they apply for SSI.



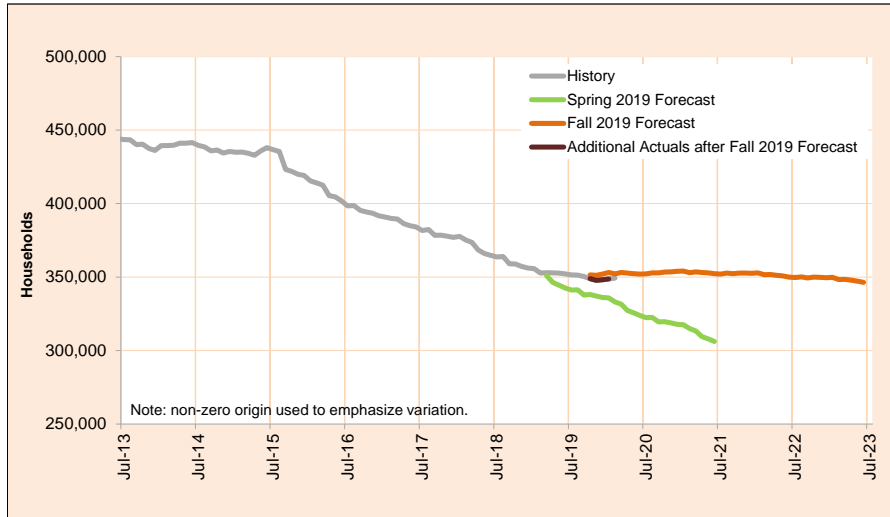
Month	Actual	Fall 2019 Forecast	Over/Under Forecast (Fall 2019)		Spring 2019 Forecast	Over/Under Forecast (Spring 2019)	
Apr-19	274	-	-	-	290	-16	-5.5%
May-19	261	-	-	-	287	-26	-9.1%
Jun-19	257	-	-	-	285	-28	-9.8%
Jul-19	255	-	-	-	282	-27	-9.6%
Aug-19	240	-	-	-	279	-39	-14.0%
Sep-19	241	-	-	-	276	-35	-12.7%
Oct-19	233	241	-8	-3.3%	273	-40	-14.7%
Nov-19	227	238	-11	-4.6%	271	-44	-16.2%
Dec-19	223	231	-8	-3.5%	269	-46	-17.1%
Jan-20	215	224	-9	-4.0%	267	-52	-19.5%
Feb-20	211	217	-6	-2.8%	262	-51	-19.5%
Mar-20	-	212	-	-	259	-	-
Apr-20	-	209	-	-	257	-	-

Monthly Caseload Forecast Variance Report
 Department of Human Services
 Self Sufficiency Programs

MARCH 2020

Total Supplemental Nutrition Assistance Programs

This program supplements food budgets for low-income families, individuals and people receiving public assistance and seniors and people with disabilities.



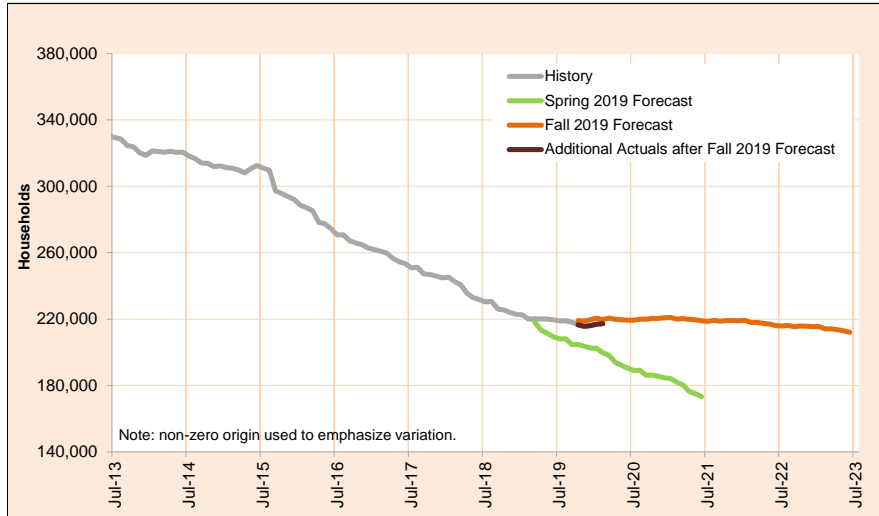
Month	Actual	Fall 2019 Forecast	Over/Under Forecast (Fall 2019)		Spring 2019 Forecast	Over/Under Forecast (Spring 2019)	
Apr-19	352,800	-	-	-	346,377	6,423	1.9%
May-19	352,780	-	-	-	344,459	8,321	2.4%
Jun-19	352,207	-	-	-	342,502	9,705	2.8%
Jul-19	351,545	-	-	-	341,187	10,358	3.0%
Aug-19	351,332	-	-	-	341,298	10,034	2.9%
Sep-19	350,396	-	-	-	337,750	12,646	3.7%
Oct-19	348,933	351,488	-2,555	-0.7%	338,154	10,779	3.2%
Nov-19	347,794	351,265	-3,471	-1.0%	337,038	10,756	3.2%
Dec-19	348,157	352,043	-3,886	-1.1%	336,075	12,082	3.6%
Jan-20	348,772	353,065	-4,293	-1.2%	335,849	12,923	3.8%
Feb-20	349,244	352,134	-2,890	-0.8%	333,118	16,126	4.8%
Mar-20	-	353,194	-	-	331,571	-	-
Apr-20	-	352,647	-	-	327,356	-	-

Monthly Caseload Variance Report
 Department of Human Services
 Self Sufficiency Programs

MARCH 2020

SNAP: Self Sufficiency

This program supplements food budgets for low-income families, individuals and seniors and people with disabilities.



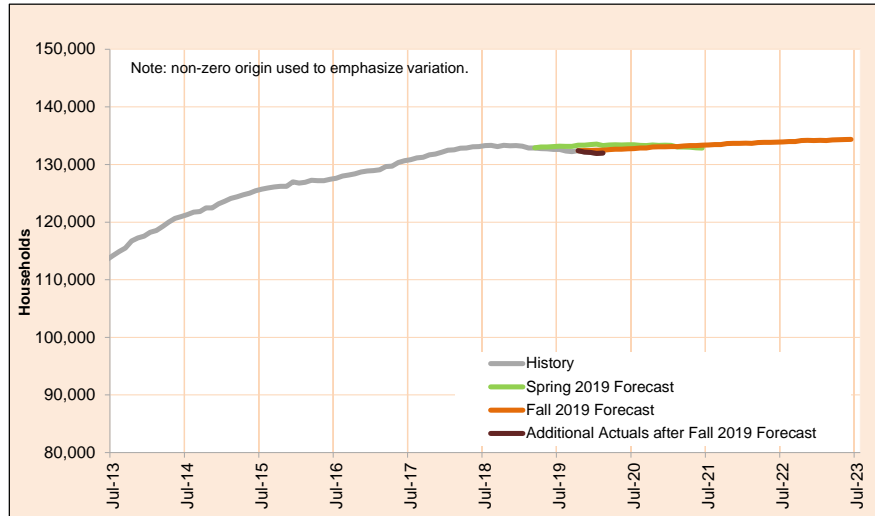
Month	Actual	Fall 2019 Forecast	Over/Under Forecast (Fall 2019)		Spring 2019 Forecast	Over/Under Forecast (Spring 2019)	
Apr-19	220,050	-	-	-	213,329	6,721	3.2%
May-19	220,064	-	-	-	211,417	8,647	4.1%
Jun-19	219,596	-	-	-	209,408	10,188	4.9%
Jul-19	218,938	-	-	-	208,009	10,929	5.3%
Aug-19	218,981	-	-	-	208,151	10,830	5.2%
Sep-19	218,162	-	-	-	204,602	13,560	6.6%
Oct-19	216,539	219,086	-2,547	-1.2%	204,783	11,756	5.7%
Nov-19	215,614	218,809	-3,195	-1.5%	203,682	11,932	5.9%
Dec-19	216,050	219,604	-3,554	-1.6%	202,609	13,441	6.6%
Jan-20	216,854	220,574	-3,720	-1.7%	202,307	14,547	7.2%
Feb-20	217,245	219,641	-2,396	-1.1%	199,829	17,416	8.7%
Mar-20	-	220,595	-	-	198,189	-	-
Apr-20	-	219,995	-	-	193,923	-	-

Monthly Caseload Forecast Variance Report
 Department of Human Services
 Self Sufficiency Programs

MARCH 2020

SNAP: Aging and People with Disabilities

This program supplements food budgets for low-income families, individuals and seniors and people with disabilities.



Month	Actual	Fall 2019 Forecast	Over/Under Forecast (Fall 2019)		Spring 2019 Forecast	Over/Under Forecast (Spring 2019)	
Apr-19	132,750	-	-	-	133,048	-298	-0.2%
May-19	132,716	-	-	-	133,042	-326	-0.2%
Jun-19	132,611	-	-	-	133,094	-483	-0.4%
Jul-19	132,607	-	-	-	133,178	-571	-0.4%
Aug-19	132,351	-	-	-	133,147	-796	-0.6%
Sep-19	132,234	-	-	-	133,148	-914	-0.7%
Oct-19	132,394	132,402	-8	0.0%	133,371	-977	-0.7%
Nov-19	132,180	132,456	-276	-0.2%	133,356	-1,176	-0.9%
Dec-19	132,107	132,439	-332	-0.3%	133,466	-1,359	-1.0%
Jan-20	131,918	132,491	-573	-0.4%	133,542	-1,624	-1.2%
Feb-20	131,999	132,493	-494	-0.4%	133,289	-1,290	-1.0%
Mar-20	-	132,599	-	-	133,382	-	-
Apr-20	-	132,652	-	-	133,433	-	-