



An Analysis of Oregon's Adult Mental Health Residential System

A summary of initial findings

June 8, 2009

**Program Analysis and Evaluation Unit
Addictions and Mental Health Division**

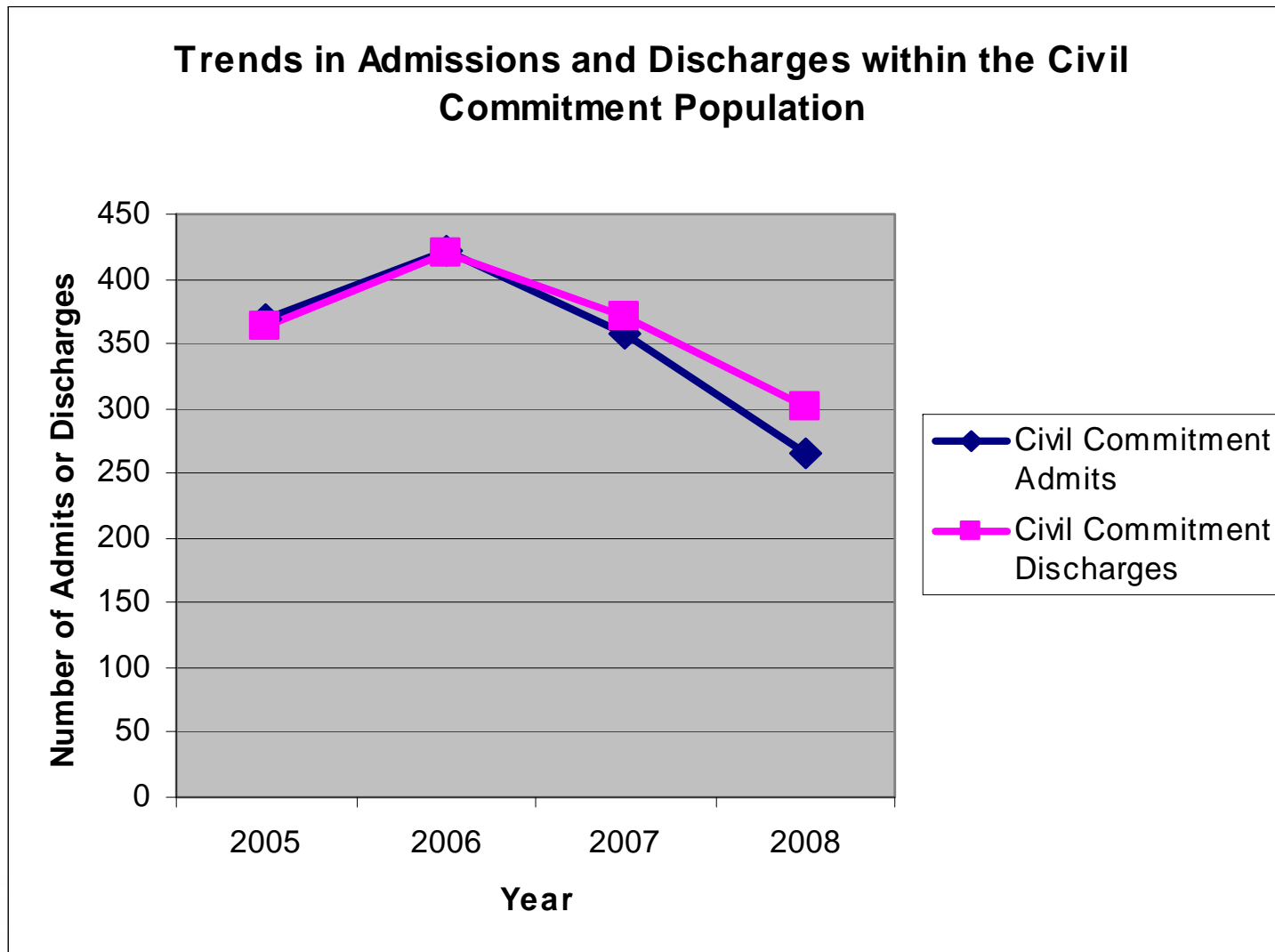


Independent. Healthy. Safe.

Oregon Health Authority

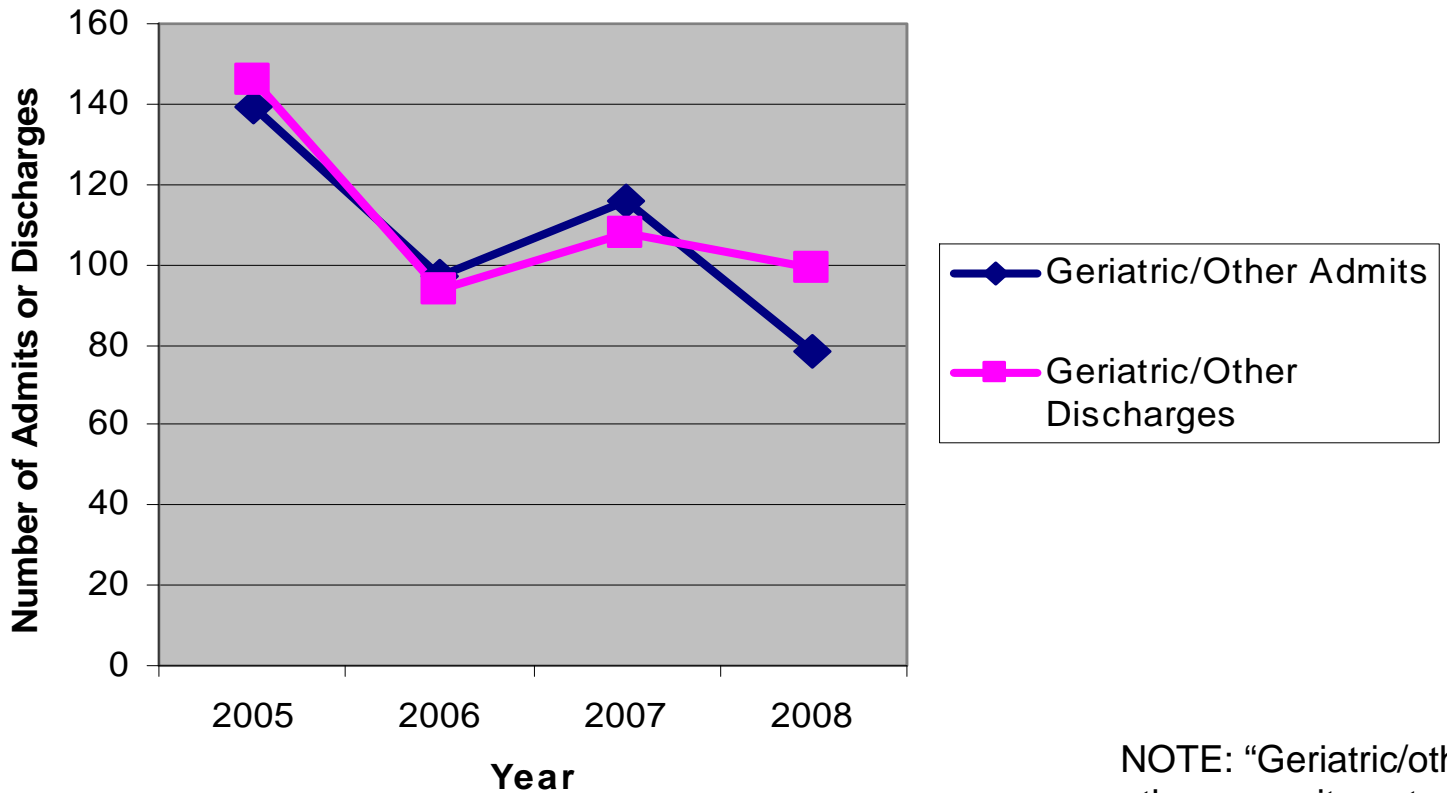


Between 2005 and 2008, there were, on average, about 359 civilly committed patients flowing into and out of OSH in a given year.



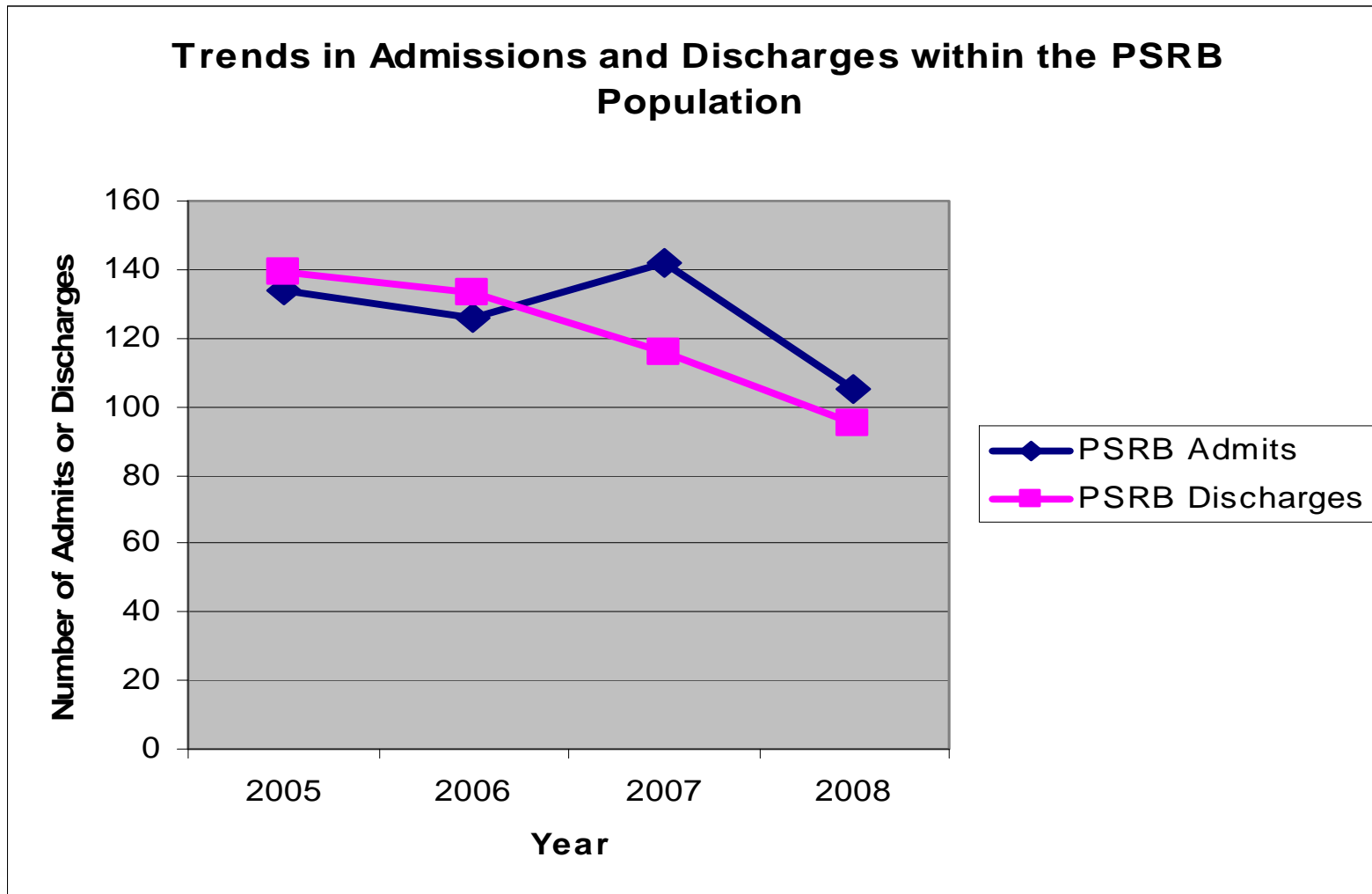
Between 2005 and 2008, there were, on average, about 110 geriatric/"other" patients flowing into and out of OSH in a given year.

Trends in Admissions and Discharges within the Geriatric/"Other" Population



NOTE: "Geriatric/other" includes all other commitments except Civil and PSRB

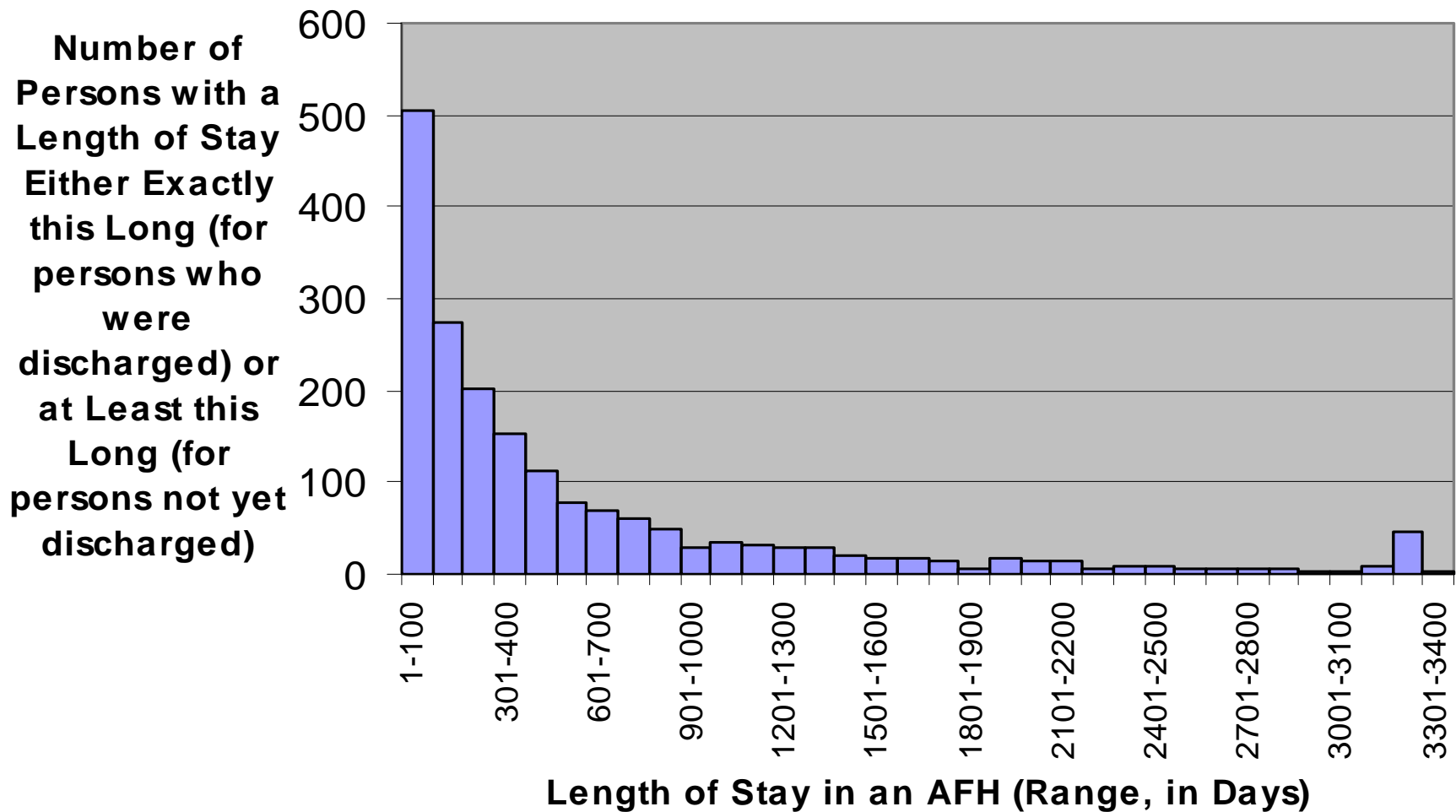
Between 2005 and 2008, there were, on average, about 124 PSRB patients flowing into and out of OSH in a given year.



Adult Foster Home Length of Stay

- Estimated mean length of stay in an AFH is **722 days**.
- At least **17%** of patients living in AFH remain there for at least **3 years**.

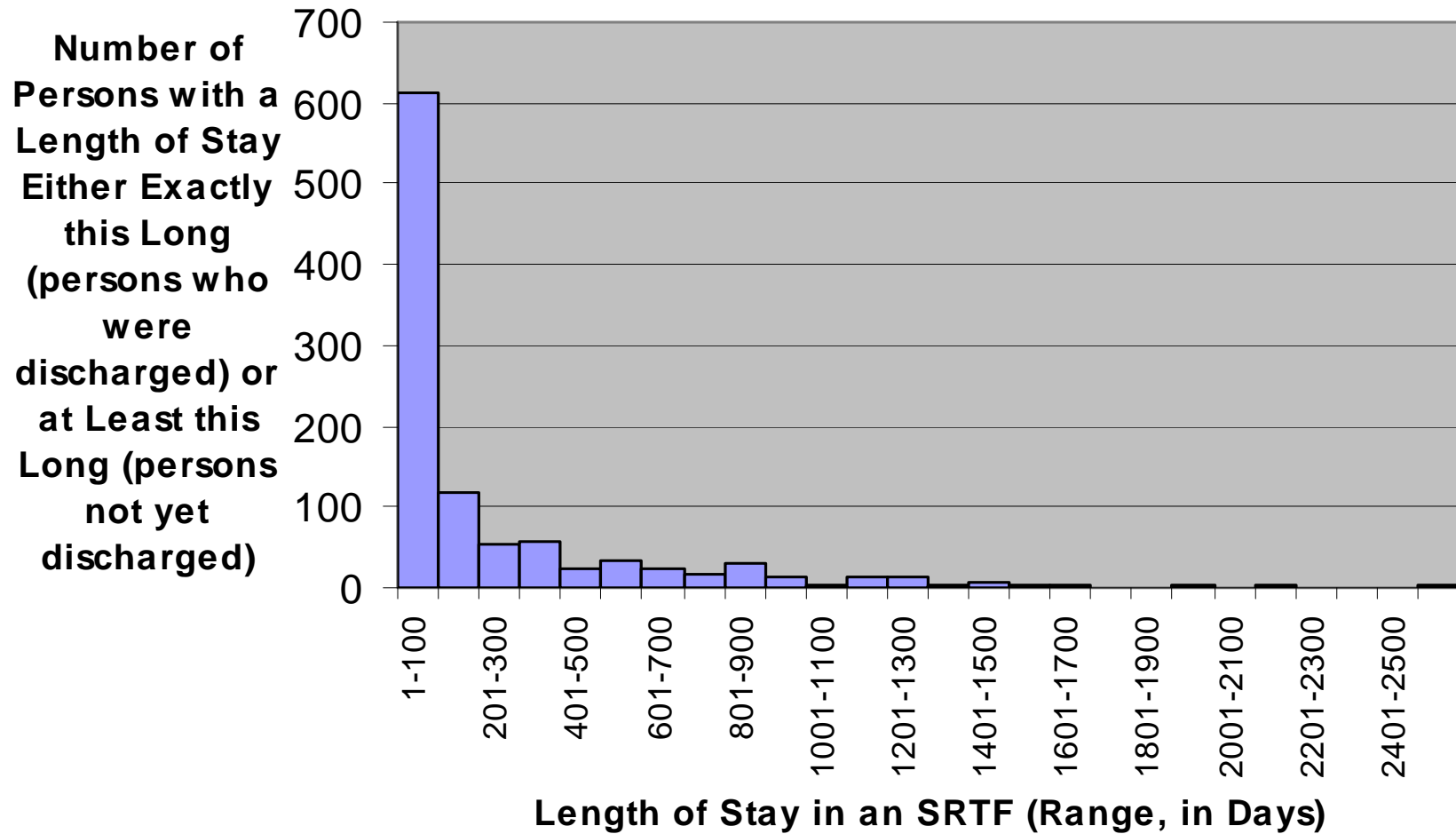
Figure 1. Lengths of stay in adult foster homes for persons admitted between 1/1/2000 and 12/31/2007 (Data include censored observations, i.e., cases who had not yet been discharged by 6/30/2008)



Secure Residential Treatment Length of Stay

- The estimated mean length of stay in a SRTF is **358 days**.
- **19%** of patients living in SRTFs remain there for over **400 days**.

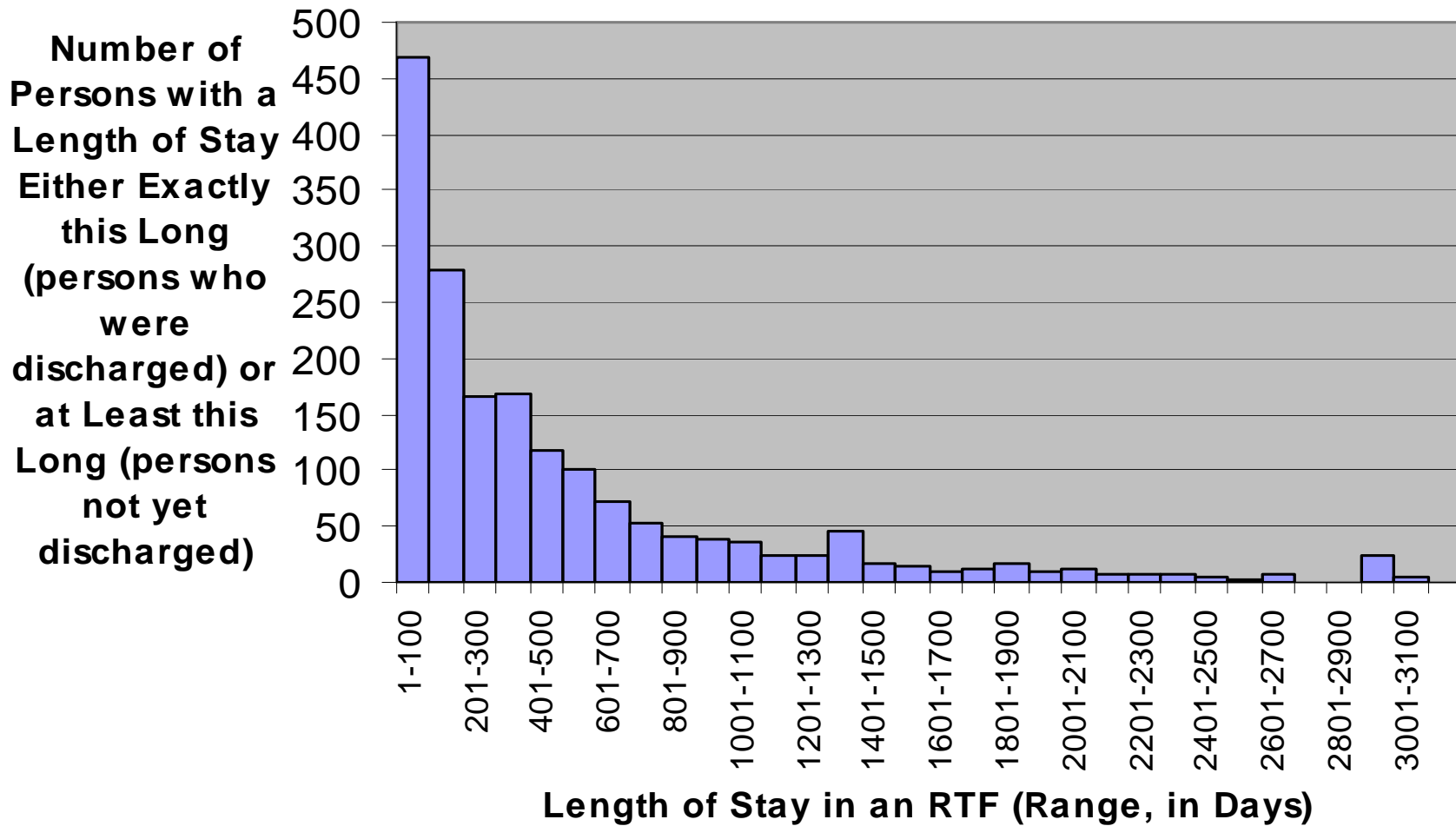
Figure 4. Lengths of stay in secure residential treatment facilities for persons admitted between 1/1/2002 and 12/31/2007 (Data include censored observations, i.e., cases who had not yet been discharged by 6/30/2008)



Residential Treatment Facility Length of Stay

- Estimated mean length of stay in a RTF Facility is **659** days.
- At least **23%** of patients living in RTFs remain there for over **600 days**.

Figure 2. Lengths of stay in residential treatment facilities for persons admitted between 1/1/2000 and 12/31/2007 (Data include censored observations, i.e., cases who had not yet been discharged by 6/30/2008)



Residential Treatment Home Length of Stay

- Estimated mean length of stay in a RTH is **456 days**.
- At least **20%** of patients living in RTHs remain there for over **600 days**.

Figure 3. Lengths of stay in residential treatment homes for persons admitted between 1/1/2000 and 12/31/2007 (Data include censored observations, i.e., cases who had not yet been discharged by 6/30/2008)

