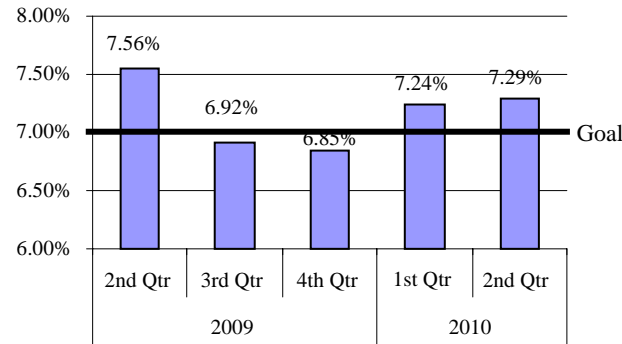


# Children's Mental Health



DASHBOARD 2nd Qtr 09-2nd Qtr 10

## OHP Eligibles Served



**MEASURE 1:** What percentages of children eligible for the Oregon Health Plan are receiving any type of mental health services?

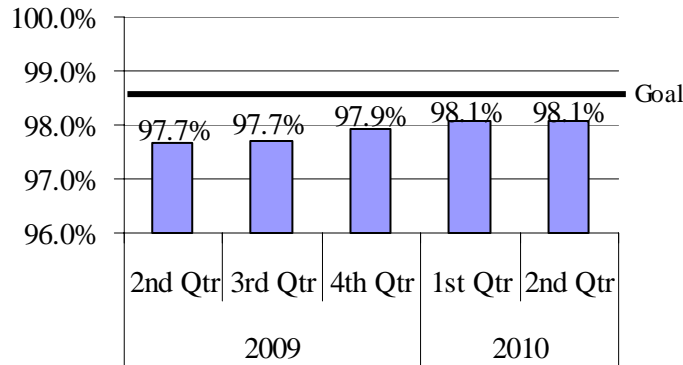
**GOAL:** Percent of children being served reaches 7.0%.

**CURRENT:** Data shows a possible data submission problem during the last part of CY2009. Increasing enrollment in Healthy Kids is reflected in the increased number served in the first half 2010.

*\*The previous dashboard percentages did not include residential MH, showing lower percentages. The Goal has been changed accordingly.*

	2Q09	3Q09	4Q09	1Q10	2Q10
Total Eligible*	281,882	290,134	304,703	317,640	326,465

## Community-Based Services & Support

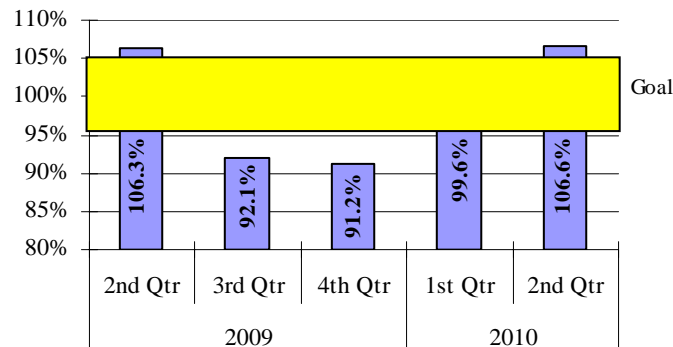


**MEASURE 2:** What percentages of children are receiving mental health services and supports through community-based services compared to facility-based services?

**GOAL:** Percent of children receiving services and supports that are community-based reaches 98.5%.

**CURRENT:** The provision of community-based services and supports continues to increase and is a prioritized service delivery model. It is important that a full continuum of services is available and provided to meet the needs of children and their families and to balance capacity with utilization.

## MHO Capitation & Billed Charges



**MEASURE 3:** What percentage of capitated funds to the MHO's was billed for 0-17 year old members?

**GOAL:** 95%-105% of capitated funds to 0-17 year olds MHO members are billed for services to that age group.

**CURRENT:** The downward trend in billed charges in second half of 2009 may be a result of information system changes. However, this trend may have an impact on future capitation rates. Problem solving with MHOs to capture this data is occurring. Increasing numbers in 2010 reflect increased enrollment of children in OHP.

Data Source: MMIS Date Pulled: 1/20/11 Age Group: 0-17  
Release date:

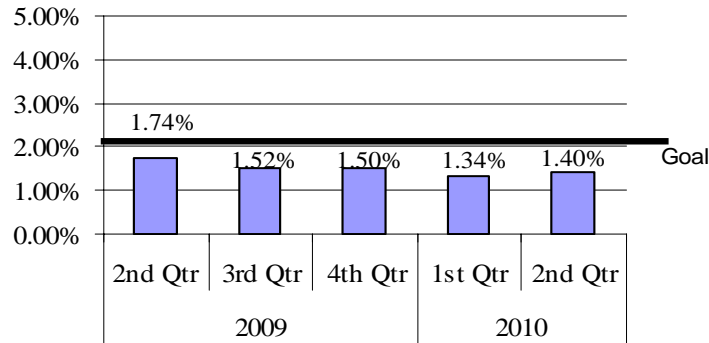
# Children's Mental Health



# DASHBOARD

2nd Qtr 09-2nd Qtr 10

## Level of Service Intensity

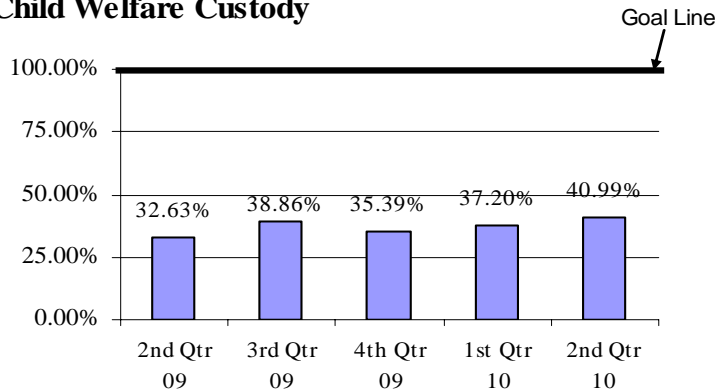


**MEASURE 4:** What percentage of 0-17 year olds are receiving Intensive Community-based Treatment and Support (ICTS) services?

**GOAL:** 2% or less of 0-17 year olds eligible for OHP are receiving ICTS services.

**CURRENT:** ICTS is the system's highest level of services and supports. Too many children receiving this level indicate that there is a need for more early identification and intervention. Too few, indicate some children may not be receiving the necessary services.

## Assessment for Children within 60 days of Child Welfare Custody

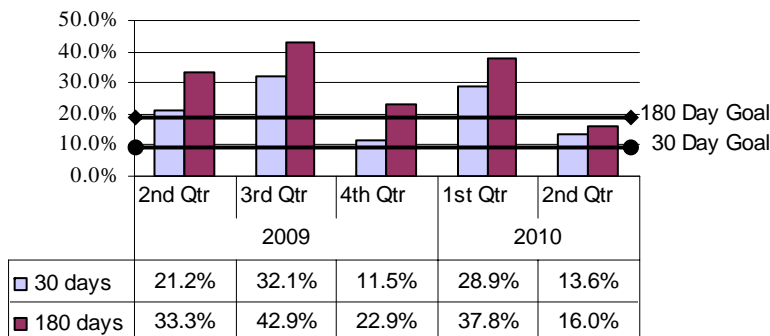


**MEASURE 5:** What percentage of 3-17 year olds have a mental health assessment within 60 days of entering child welfare custody?

**GOAL:** 100%

**CURRENT:** This measure is dependent on many factors including solid working relationships at the local level between child welfare and mental health. The upward trend is good but still a long way from our goal of 100%.

## PRTS Readmissions within 30 & 180 days



**MEASURE 6:** What percentage of 0-17 year olds are readmitted into psychiatric residential treatment services within 30 and 180 days after discharge?

**GOAL:** Less than 10% and 20% respectively

**CURRENT:** The addition of care coordination and child and family teams has positively impacted successful transitions to community-based services.