

Proportions of Children in Substitute Care
Receiving Mental Health Services within
Sixty Days from Custody Placement

**Department of Human Services
Addictions and Mental Health Division
Program Analysis Unit**

**500 Summer Street NE E86
Salem, OR 97301-1118**

March 18, 2010

Department of Human Services Addictions and Mental Health Division

Mental Health Assessment and Services Utilization Report March 18, 2010

Introduction

This report presents trends in proportions of children in child welfare custody older than age 3 who received (a) mental health assessment, (b) mental health related administrative services, (c) mental health treatment services, and (d) any combination of assessment, administrative or treatment services within 60 days following their placement in substitute care. Federal and state policies require that these children receive mental health assessment within 60 days from the date of their placement in substitute care.

The mental health assessment determines treatment needs for each child. The children are then provided with appropriate treatment based on assessment results. Administrative services may be supplemental to assessment, e.g., administering psychiatric interview examinations or psychological testing, or provided on their own, e.g., interpreting and report writing.

Chart 1 shows the proportion of children in substitute care older than age 3 who received mental health assessment, administrative and treatment services or any combination of these services within the required time frame over the 23-quarter period, 10/1/2003 to 6/30/2009. Only children older than 3 years of age are subject to the mental health assessment and services analysis. Trend tracking for mental health treatment services began in the 4th quarter of FFY 07/08.

Method

Child Welfare Program (CWP) provides the quarterly list of children taken into state custody and who stayed in the program for at least 60 days. The file includes, among others, child identifier code, date of birth and dates on which the children were placed in substitute care.

Each child is then matched with claims records from the Medicaid Management Information System (MMIS) using the unique child identifier code. Mental health assessment and administrative services are identified using appropriate

diagnoses and Common Procedure Coding System (HCPCS), or Current Procedural Terminology (CPT) codes (see Code Chart)¹.

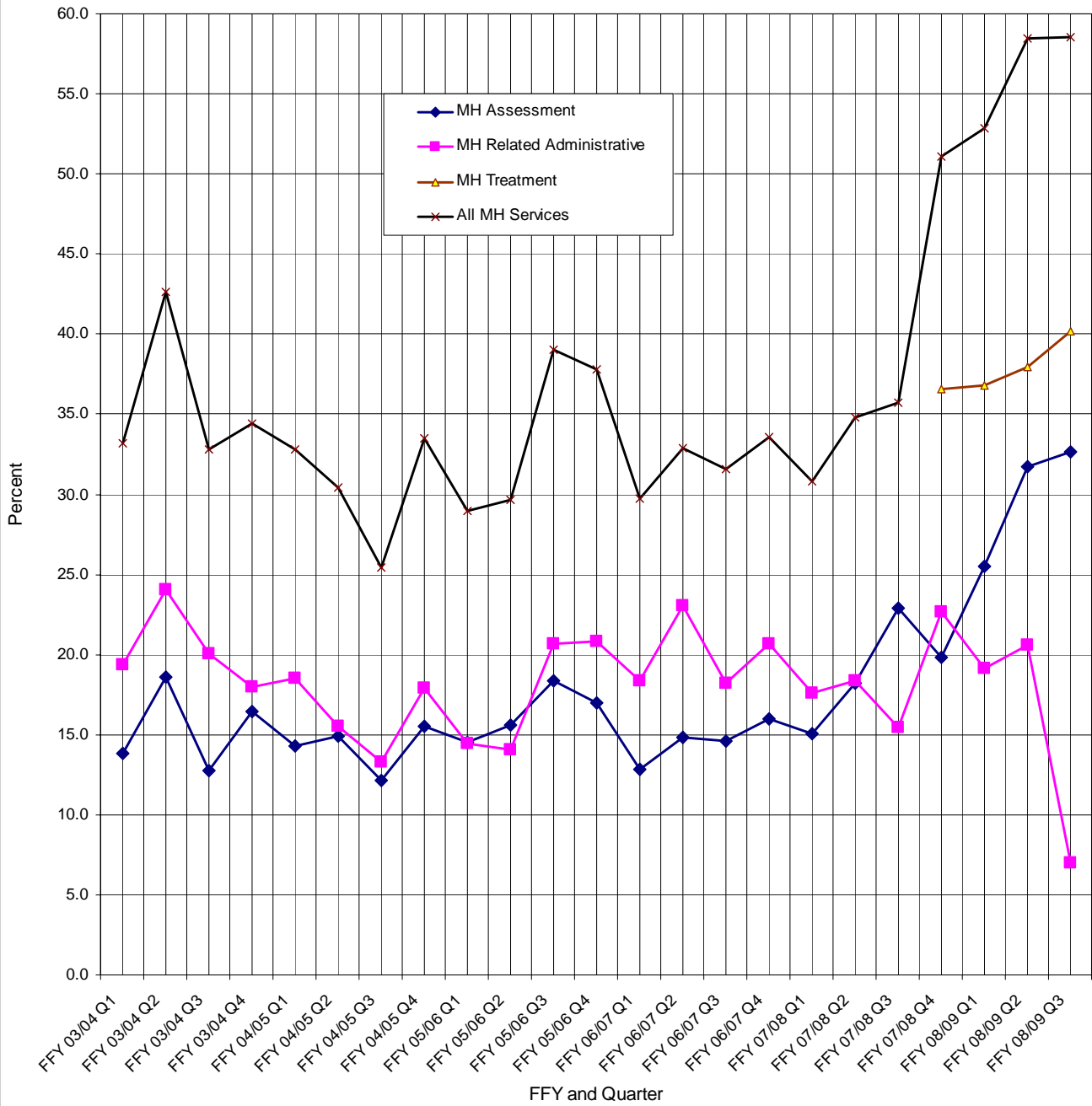
Results

Chart 1 shows the proportion of children in substitute care older than age 3 who received mental health assessment, administrative, and treatment services or any combination of these services within 60 days from their placement in substitute care over the period October 2003 to June 2009. Receipt of mental health treatment services was incorporated into this analysis recently. The fourth trend line in Chart 1 relates to the proportion of children who received one or more of mental health assessment, administrative or treatment services.

In the last few quarters, increasing proportions of children in substitute care have been receiving mental health assessment services, close to one in every three children being assessed in the April – June quarter of 2009. By contrast, the proportion of children in substitute care receiving mental health related administrative services is shrinking. Overall, the proportion of children receiving one or more services has been increasing since October 2007. Including mental health treatment services, more than 50% of children taken into substitute care have received at least one unit of service. This proportion increased from 51% in the October – December quarter of 2008 to about 59% in the April – June quarter of 2009.

¹ See Attachment 1 for list and description of diagnoses, HCPCS, and CPT codes
Mental Health Assessment and Services Utilization Report

Chart 1. Percent of Children Older Than 3 Who Received Mental Health Services within 60 Days Following DHS Custody
 Quarterly Report for the period 10/1/2003 to 6/30/2009



Service Utilization by County

The tables in the following pages show numbers and percentages of children who received mental health assessment, mental health related administrative, treatment or any combination of services for the last quarter of FFY 07/08 and the first three quarters of FFY 08/09.

Percent of Children Older Than Age 3 Who Received Mental Health Assessment, Mental Health related administrative or Treatment Services within 60 Days Following DHS Custody
Addictions and Mental Health Division
Department of Human Services
Fourth Quarter of FFY 2007/2008

County	Number of Children						Percent of Children *				FFY 2006/07 Quarter 4			
	In Custody		Who Received:				FFY 2007/08 Quarter 4							
	Total	>3	Admin-ment	Treat-strative	Treat-ment	All MH Servs**	Assess-ment	Admin-strative	Treat-ment	All MH Servs**	Assess-ment	Admin-strative	Treat-ment	All MH Servs***
Baker	5	3	2	0	2	3	66.7	0.0	66.7	100.0	0.0	0.0	na	
Benton	3	1	1	0	1	1	100.0	0.0	100.0	100.0	0.0	0.0	na	
Clackamas	61	42	10	18	21	28	23.8	42.9	50.0	66.7	0.0	0.0	na	
Clatsop	12	4	0	1	0	1	0.0	25.0	0.0	25.0	0.0	0.0	na	
Columbia	15	11	8	0	2	8	72.7	0.0	18.2	72.7	0.0	0.0	na	
Coos	12	6	3	1	2	3	50.0	16.7	33.3	50.0	0.0	0.0	na	
Crook	8	7	0	1	4	4	0.0	14.3	57.1	57.1	0.0	0.0	na	
Curry	2	1	0	0	1	1	0.0	0.0	100.0	100.0	0.0	0.0	na	
Deschutes	4	3	0	0	1	1	0.0	0.0	33.3	33.3	0.0	0.0	na	
Douglas	39	26	1	15	11	18	3.8	57.7	42.3	69.2	0.0	0.0	na	
Gilliam	1	1	1	0	1	1	100.0	0.0	100.0	100.0	0.0	0.0	na	
Grant	0	0	na	na	na	na	na	na	na	na	0.0	0.0	na	
Harney	4	3	2	2	3	3	66.7	66.7	100.0	100.0	0.0	0.0	na	
Hood River	6	5	1	0	3	3	20.0	0.0	60.0	60.0	0.0	0.0	na	
Jackson	74	50	1	17	20	25	2.0	34.0	40.0	50.0	0.0	0.0	na	
Jefferson	29	19	1	1	2	3	5.3	5.3	10.5	15.8	0.0	0.0	na	
Josephine	42	28	5	3	11	13	17.9	10.7	39.3	46.4	0.0	0.0	na	
Klamath	24	16	2	10	3	13	12.5	62.5	18.8	81.3	0.0	0.0	na	
Lake	3	3	2	0	1	2	66.7	0.0	33.3	66.7	0.0	0.0	na	
Lane	139	85	1	41	28	47	1.2	48.2	32.9	55.3	0.0	0.0	na	
Lincoln	15	10	2	0	3	4	20.0	0.0	30.0	40.0	0.0	0.0	na	
Linn	26	15	8	1	4	10	53.3	6.7	26.7	66.7	0.0	0.0	na	
Malheur	15	5	3	0	3	3	60.0	0.0	60.0	60.0	0.0	0.0	na	
Marion	147	77	14	6	18	26	18.2	7.8	23.4	33.8	0.0	0.0	na	
Morrow	3	1	0	0	0	0	0.0	0.0	0.0	0.0	0.0	0.0	na	
Multnomah	227	153	51	25	64	81	33.3	16.3	41.8	52.9	0.0	0.0	na	
Polk	13	8	3	0	6	6	37.5	0.0	75.0	75.0	0.0	0.0	na	
Sherman	0	0	na	na	na	na	na	na	na	na	0.0	0.0	na	
Tillamook	3	2	0	0	0	0	0.0	0.0	0.0	0.0	0.0	0.0	na	
Umatilla	22	7	0	0	2	2	0.0	0.0	28.6	28.6	0.0	0.0	na	
Union	5	5	0	3	3	3	0.0	60.0	60.0	60.0	0.0	0.0	na	
Wallowa	0	0	na	na	na	na	na	na	na	na	0.0	0.0	na	
Wasco	10	6	1	1	3	4	16.7	16.7	50.0	66.7	0.0	0.0	na	
Washington	101	63	7	7	17	21	11.1	11.1	27.0	33.3	0.0	0.0	na	
Wheeler	0	0	na	na	na	na	na	na	na	na	0.0	0.0	na	
Yamhill	21	9	4	0	7	7	44.4	0.0	77.8	77.8	0.0	0.0	na	
Tribes	0	0	na	na	na	na	na	na	na	na	na	na	na	
State Total	1,091	675	134	153	247	345	19.9	22.7	36.6	51.1	0.0	0.0	na	

Berhanu: Data pulled from the new DSSURS in October 2009

* na means not applicable for there were no children age 3 or older taken into custody in the county

** This column shows the unduplicated number of children who received mental health assessment or treatment services

*** Not applicable as Treatment services were not part of the report in earlier quarters

Percent of Children Older Than Age 3 Who Received Mental Health Assessment, Mental Health
related administrative or Treatment Services within 60 Days Following DHS Custody
Addictions and Mental Health Division
Department of Human Services
First Quarter of 2008/2009

County	Number of Children						Percent of Children *							
	In Custody		Who Received:				FFY 2008/09 Quarter 1				FFY 2007/08 Quarter 1			
	Total	> 3	Assess-	Admin-	Treat-	All MH	Assess-	Admin-	Treat-	All MH	Assess-	Admin-	Treat-	All MH
			ment	strative	ment	Servs**	ment	strative	ment	Servs**	ment	strative	ment	Servs***
Baker	2	2	0	0	1	1	0.0	0.0	50.0	50.0	0.0	0.0	na	
Benton	5	3	1	0	0	1	33.3	0.0	0.0	33.3	0.0	0.0	na	
Clackamas	51	39	9	12	13	25	23.1	30.8	33.3	64.1	16.7	25.0	na	
Clatsop	12	5	0	1	1	2	0.0	20.0	20.0	40.0	12.5	12.5	na	
Columbia	14	11	3	1	2	4	27.3	9.1	18.2	36.4	5.6	0.0	na	
Coos	24	14	9	4	10	11	64.3	28.6	71.4	78.6	37.5	0.0	na	
Crook	3	2	0	1	1	1	0.0	50.0	50.0	50.0	0.0	66.7	na	
Curry	2	0	na	na	na	na	na	na	na	na	0.0	20.0	na	
Deschutes	14	9	0	1	5	6	0.0	11.1	55.6	66.7	7.7	7.7	na	
Douglas	24	15	4	5	6	10	26.7	33.3	40.0	66.7	0.0	19.4	na	
Gilliam	0		na	na	na	na	na	na	na	na	0.0	0.0	na	
Grant	1	0	na	na	na	na	na	na	na	na	na	na	na	
Harney	1	1	1	0	1	1	100.0	0.0	100.0	100.0	100.0	0.0	na	
Hood River	5	3	2	1	2	2	66.7	33.3	66.7	66.7	0.0	0.0	na	
Jackson	82	56	3	15	13	21	5.4	26.8	23.2	37.5	0.0	33.3	na	
Jefferson	5	3	1	0	8	1	33.3	0.0	266.7	33.3	33.3	100.0	na	
Josephine	32	21	8	2	0	13	38.1	9.5	0.0	61.9	23.5	17.6	na	
Klamath	13	8	5	1	4	5	62.5	12.5	50.0	62.5	5.0	55.0	na	
Lake	2	1	0	0	0	0	0.0	0.0	0.0	0.0	0.0	25.0	na	
Lane	106	70	1	20	27	37	1.4	28.6	38.6	52.9	5.3	44.7	na	
Lincoln	15	11	3	1	2	5	27.3	9.1	18.2	45.5	0.0	28.6	na	
Linn	39	21	12	3	11	15	57.1	14.3	52.4	71.4	35.7	10.7	na	
Malheur	7	3	1	0	2	2	33.3	0.0	66.7	66.7	38.5	0.0	na	
Marion	131	77	29	6	12	38	37.7	7.8	15.6	49.4	10.6	12.2	na	
Morrow	3	2	2		2	2	100.0	0.0	100.0	100.0	0.0	0.0	na	
Multnomah	171	127	39	29	73	77	30.7	22.8	57.5	60.6	25.8	12.1	na	
Polk	15	10	2	3	3	5	20.0	30.0	30.0	50.0	14.8	33.3	na	
Sherman	3	3	1	0	2	2	33.3	0.0	66.7	66.7	0.0	0.0	na	
Tillamook	8	8	0	4	1	5	0.0	50.0	12.5	62.5	0.0	100.0	na	
Umatilla	10	6	2	1	3	4	33.3	16.7	50.0	66.7	10.0	0.0	na	
Union	5	1	0	0	0	0	na	na	na	na	na	na	na	
Wallowa	0	0	na	na	na	na	na	na	na	na	100.0	0.0	na	
Wasco	16	5	1	0	4	4	20.0	0.0	80.0	80.0	25.0	0.0	na	
Washington	76	50	14	3	9	14	28.0	6.0	18.0	28.0	9.5	16.2	na	
Wheeler	0	0	na	na	na	na	na	na	na	na	na	na	na	
Yamhill	14	4	0	0	1	1	0.0	0.0	25.0	25.0	40.0	20.0	na	
Tribes	15	9	0	1	2	2	0	0	22.2	0	0.0	0.0	na	
State Total	926	600	153	115	221	317	25.5	19.2	36.8	52.8	15.1	18.0	na	

Berhanu: Data pulled from the new DSSURS in January 2010

* na means not applicable for there were no children 3 or older taken into custody in the county

** This column shows the unduplicated number of children who received mental health assessment or treatment services

*** Not applicable as Treatment services were not part of the report in earlier quarters

Percent of Children Older Than Age 3 Who Received Mental Health Assessment, Mental Health
related administrative or Treatment Services within 60 Days Following DHS Custody
Addictions and Mental Health Division
Department of Human Services
Second Quarter of FFY 2008/2009

County	Number of Children						Percent of Children *							
	In Custody		Who Received:				FFY 2008/09 Quarter 2				FFY 2007/08 Quarter 2			
	Total	>3	Assess- ment	Admin- strative	Treat- ment	All MH Servs**	Assess- ment	Admin- strative	Treat- ment	All MH Servs**	Assess- ment	Admin- strative	Treat- ment	All MH Servs***
Baker	3	3	1	0	1	2	33.3	0.0	33.3	66.7	25.0	0.0	na	
Benton	3	2	0	0	0	0	0.0	0.0	0.0	0.0	25.0	62.5	na	
Clackamas	51	33	7	13	19	23	21.2	39.4	57.6	69.7	3.8	42.3	na	
Clatsop	20	13	0	1	1	2	na	na	na	na	na	na	na	
Columbia	23	18	8	7	11	14	44.4	38.9	61.1	77.8	28.6	0.0	na	
Coos	46	32	19	3	9	19	59.4	9.4	28.1	59.4	41.4	10.3	na	
Crook	10	10	6	1	7	8	0.0	0.0	70.0	0.0	0.0	0.0	na	
Curry	8	6	3	0	2	5	0.0	0.0	33.3	0.0	0.0	0.0	na	
Deschutes	15	10	2	0	7	7	20.0	0.0	70.0	70.0	20.0	20.0	na	
Douglas	50	29	12	1	5	13	41.4	3.4	17.2	44.8	0.0	68.8	na	
Gilliam	2	1	0	0	0	0	0.0	0.0	0.0	0.0	0.0	0.0	na	
Grant	1	0	na	na	na	na	na	na	na	na	na	na	na	
Harney	1	1	1	0	1	1	100.0	0.0	100.0	100.0	0.0	100.0	na	
Hood River	6	5	4	0	4	4	80.0	0.0	80.0	80.0	75.0	25.0	na	
Jackson	62	36	1	13	11	18	2.8	36.1	30.6	50.0	0.0	25.0	na	
Jefferson	3	2	0	0	0	0	0.0	0.0	0.0	0.0	37.5	12.5	na	
Josephine	30	17	8	1	7	13	47.1	5.9	41.2	76.5	0.0	6.3	na	
Klamath	24	11	3	2	1	4	27.3	18.2	9.1	36.4	13.6	40.9	na	
Lake	1	1	0	1	0	1	na	na	na	na	na	na	na	
Lane	146	96	2	39	27	49	2.1	40.6	28.1	51.0	3.1	42.2	na	
Lincoln	7	5	2	0	3	3	40.0	0.0	60.0	60.0	0.0	66.7	na	
Linn	25	15	8	1	8	10	53.3	6.7	53.3	66.7	25.0	10.0	na	
Malheur	15	11	6	2	9	10	54.5	18.2	81.8	90.9	16.7	0.0	na	
Marion	137	81	43	5	8	46	53.1	6.2	9.9	56.8	17.1	12.2	na	
Morrow	1	0	na	na	na	na	na	na	na	na	50.0	0.0	na	
Multnomah	229	153	51	42	78	95	33.3	27.5	51.0	62.1	30.0	14.2	na	
Polk	23	15	4	4	7	9	26.7	26.7	46.7	60.0	14.3	33.3	na	
Sherman	1	1	0	0	0	0	na	na	na	na	na	na	na	
Tillamook	5	3	0	1	1	1	0.0	33.3	33.3	33.3	0.0	0.0	na	
Umatilla	21	10	4	1	7	7	40.0	10.0	70.0	70.0	0.0	7.1	na	
Union	5	4	1	0	2	2	25.0	0.0	50.0	50.0	0.0	0.0	na	
Wallowa	3	2	0	0	2	2	0.0	0.0	100.0	100.0	0.0	100.0	na	
Wasco	10	5	2	0	3	3	40.0	0.0	60.0	60.0	14.3	28.6	na	
Washington	123	89	25	16	30	47	28.1	18.0	33.7	52.8	25.0	8.3	na	
Wheeler	0	0	na	na	na	na	na	na	na	na	na	na	na	
Yamhill	36	30	16	1	15	23	53.3	3.3	50.0	76.7	55.6	5.6	na	
Tribes	11	4	0	0	0	0	na	na	na	na	na	na	na	
State Total	1,153	754	239	155	286	441	31.7	20.6	37.9	58.5	19.0	20.9	na	

Berhanu: Data pulled from the new DSSURS in January 2010

* na means not applicable for there were no children age 3 or older taken into custody in the county

** This column shows the unduplicated number of children who received mental health assessment or treatment services

*** Not applicable as Treatment services were not part of the report in earlier quarters

Percent of Children Older Than Age 3 Who Received Mental Health Assessment, Mental Health
related administrative or Treatment Services within 60 Days Following DHS Custody
Addictions and Mental Health Division
Department of Human Services
Third Quarter of FFY 2008/2009

County	Number of Children						Percent of Children *							
	In Custody		Who Received:				FFY 2008/09 Quarter 3				FFY 2007/08 Quarter 3			
	Total	>3	Assess- ment	Admin- strative	Treat- ment	All MH Servs**	Assess- ment	Admin- strative	Treat- ment	All MH Servs**	Assess- ment	Admin- strative	Treat- ment	All MH Servs***
Baker	8	4	0	0	3	3	0.0	0.0	75.0	75.0	50.0	50.0	na	
Benton	10	9	2	0	2	2	22.2	0.0	22.2	22.2	0.0	0.0	na	
Clackamas	34	22	9	2	9	15	40.9	9.1	40.9	68.2	25.0	28.6	na	
Clatsop	5	1	1	0	1	1	100.0	0.0	100.0	100.0	0.0	0.0	na	
Columbia	23	17	3	0	7	10	17.6	0.0	41.2	58.8	37.5	12.5	na	
Coos	34	16	10	0	7	13	62.5	0.0	43.8	81.3	22.7	13.6	na	
Crook	9	6	4	0	1	4	na	na	na	na	na	na	na	
Curry	2	1	0	1	1	1	na	na	na	na	na	na	na	
Deschutes	21	13	4	0	13	13	30.8	0.0	100.0	100.0	58.3	16.7	na	
Douglas	41	20	6	0	3	8	30.0	0.0	15.0	40.0	0.0	76.9	na	
Gilliam	5	4	2	0	2	3	na	na	na	na	na	na	na	
Grant	0	0	na	na	na	na	na	na	na	na	na	na	na	
Harney	4	3	2	1	3	3	66.7	33.3	100.0	100.0	0.0	0.0	na	
Hood River	7	7	2	1	2	5	28.6	14.3	28.6	71.4	0.0	33.3	na	
Jackson	55	32	0	0	10	10	0.0	0.0	31.3	31.3	0.0	9.3	na	
Jefferson	8	5	1	0	1	1	20.0	0.0	20.0	20.0	13.3	46.7	na	
Josephine	21	14	1	0	3	4	7.1	0.0	21.4	28.6	0.0	0.0	na	
Klamath	41	30	10	4	12	17	33.3	13.3	40.0	56.7	25.0	37.5	na	
Lake	0	0	na	na	na	na	na	na	na	na	75.0	0.0	na	
Lane	149	100	4	6	44	48	4.0	6.0	44.0	48.0	2.4	34.1	na	
Lincoln	14	10	4	8	6	9	40.0	80.0	60.0	90.0	0.0	50.0	na	
Linn	33	22	14	1	8	17	63.6	4.5	36.4	77.3	51.3	17.9	na	
Malheur	13	7	3	0	4	6	42.9	0.0	57.1	85.7	100.0	0.0	na	
Marion	165	109	62	7	18	70	56.9	6.4	16.5	64.2	27.5	9.2	na	
Morrow	5	5	3	0	4	4	60.0	0.0	80.0	80.0	0.0	0.0	na	
Multnomah	212	142	46	11	67	80	32.4	7.7	47.2	56.3	29.3	12.2	na	
Polk	19	16	4	1	5	9	25.0	6.3	31.3	56.3	47.8	39.1	na	
Sherman	1	1	0	0	1	1	0.0	0.0	100.0	100.0	0.0	0.0	na	
Tillamook	11	8	1	0	4	4	12.5	0.0	50.0	50.0	50.0	0.0	na	
Umatilla	35	22	4	0	10	10	18.2	0.0	45.5	45.5	40.0	20.0	na	
Union	3	1	0	0	1	1	0.0	0.0	100.0	100.0	66.7	0.0	na	
Wallowa	1	1	0	0	1	1	na	na	na	na	na	na	na	
Wasco	10	4	0	0	1	1	0.0	0.0	25.0	25.0	28.6	0.0	na	
Washington	119	89	36	9	41	59	40.4	10.1	46.1	66.3	22.1	22.1	na	
Wheeler	0	0	na	na	na	na	na	na	na	na	na	na	na	
Yamhill	14	13	9	1	9	10	69.2	7.7	69.2	76.9	53.8	7.7	na	
Tribes	4	3	0	0	0	0	na	na	na	na	na	na	na	
State Total	1,136	757	247	53	304	443	32.6	7.0	40.2	58.5	24.1	19.2	na	

Berhanu: Data pulled from the new DSSURS in January 2010

* na means not applicable for there were no children age 3 or older taken into custody in the county

** This column shows the unduplicated number of children who received mental health assessment or treatment services

*** Not applicable as Treatment services were not part of the report in earlier quarters

Mental Health Services Code List by Category

No	Code	Descriptions
Assessment		
1	H0031	Mental Health/Clinical Assessment by Non-Physicians
2	H1011	Family Assessment by licensed behavioral health professional
Administrative Services		
1	V6889	Diagnosis code Used for billing for administrative encounters
2	90801	Psychiatric diagnostic interview examination
3	90802	Interactive psychiatric diagnostic interview examination using play equipment
4	90889	Preparation of report of patient's psychiatric status, history, treatment, or progress for purposes other than legal or consultative functions.
5	96100	Psychological testing with interpretation and report hourly – discontinued in 2003
6	96101 96102	Psychological testing including psycho-diagnostic assessment of emotionality, intellectual ability, personality and psychopathology, i.e. MMPI. Etc. – administering and interpreting
7	96110	Developmental testing limited (e.g. developmental screening test II-early language milestone screen) interpretation and report
8	96111	Developmental testing extended (e.g. assessment of motor, language, social, adaptive and/or cognitive functioning by standard developmental instruments with interpretation and report)
9	99080	Special reports on issues supplemental to the basic service
10	S9981	Medical records copying fee, administrative
	S9982	Medical records copying fee, per page charge
Treatment		
	90804	Psytx, Office, 20-30 Min
	90805	Psytx, Off, 20-30 Min W/E&M
	90806	Psytx, Off, 45-50 Min
	90807	Psytx, Off, 45-50 Min W/E&M
	90808	Psytx, Office, 75-80 Min
	90809	Psytx, Off, 75-80, W/E&M
	90810	Intac Psytx, Off, 20-30 Min
	90811	Intac Psytx, 20-30, W/E&M
	90812	Intac Psytx, Off, 45-50 Min
	90813	Intac Psytx, 45-50 Min W/E&M

	90814	Intac Psytx, Off, 75-80 Min
	90815	Intac Psytx, 75-80 W/E&M
	90846	Family Psytx W/O Patient
	90847	Family Psytx W/Patient
	90849	Multiple Family Group Psytx
	90853	Group Psychotherapy
	90857	Intac Group Psytx
	90862	Medication Management
	90882	Environmental Manipulation
	90887	Consultation With Family
	G0176	Opps/Php;Activity Therapy
	G0177	Opps/Php; Train & Educ Serv
	H0002	Alcohol And/Or Drug Screenin
	H0004	Alcohol And/Or Drug Services
	H0032	Mh Svc Plan Dev By Non-Md
	H0033	Oral Med Adm Direct Observe
	H0034	Med Trng & Support Per 15min
	H0036	Comm Psy Face-Face Per 15min
	H0038	Self-Help/Peer Svc Per 15min
	H0039	Asser Com Tx Face-Face/15min
	H0045	Respite Not-In-Home Per Diem
	H2010	Comprehensive Med Svc 15 Min
	H2011	Crisis Interven Svc, 15 Min
	H2014	Skills Train And Dev, 15 Min
	H2021	Com Wrap-Around Sv, 15 Min
	H2022	Com Wrap-Around Sv, Per Diem
	H2023	Supported Employ, Per 15 Min
	H2027	Psychoed Svc, Per 15 Min
	H2032	Activity Therapy, Per 15 Min
	H2033	Multisys Ther/Juvenile 15min
	S5151	Unskilled Respitecare /Diem
	S9125	Respite Care, In The Home, P
	S9480	Intensive Outpatient Psychia
	S9484	Crisis Intervention Per Hour
	T1005	Respite Care Service 15 Min
	T1013	Sign Lang/Oral Interpreter
	T1016	Case Management
	T1023	Program Intake Assessment

Note: More than 99% of mental health assessment services are identified with Health Common Procedure Coding System (HCPCS) code H0031 (Mental Health clinical assessment by non-physician). The balance of assessment services are identified with H1011 (Family assessment by licensed behavioral health professional).

Over the 17 quarter period (October 2003 to December 2007), 89.6% of Administrative services were identified with diagnosis code V6889 (60.4%) and current procedural terminology (CPT) code 90801 (29.3%).

