

# Program of All-inclusive Care for the Elderly

## PACE



**Cindy Susee, APD PACE Policy Analyst**  
**Jeannie Frederick, Providence ElderPlace**

**October 2017**



# PACE Model

PACE is a Medicare and Medicaid national program, currently in 31 states, that offers an array of health and wellness services in a consolidated **all-inclusive** service model.

- Medicare and Medicaid funds cover all medically necessary services.
- There are no co-pays or deductibles.
- Medicare recipients pay a monthly premium for the long-term care and drug benefits.
- Recipients can also pay privately for the PACE program if they do not qualify for Medicare or Medicaid.

# PACE Model

PACE services include but are not limited to:

- \* Long-term Care
- \* Primary Care
- \* Laboratory Tests & Procedures
- \* Emergency Medical Services
- \* Hospital Care
- \* Nursing Home Care
- \* Palliative Care
- \* Dental Services
- \* Mental Health Services
- \* Social Services
- \* Specialty Medical Care: Audiology/Optical/Podiatry
- \* Therapeutic Services: Physical/Occupational/Speech/Recreational
- \* Medication: Prescription & OTC
- \* Medical Supplies
- \* Medical Equipment
- \* Adult Day Services
- \* Transportation
- \* In-Home Care

# PACE Eligibility and IDT

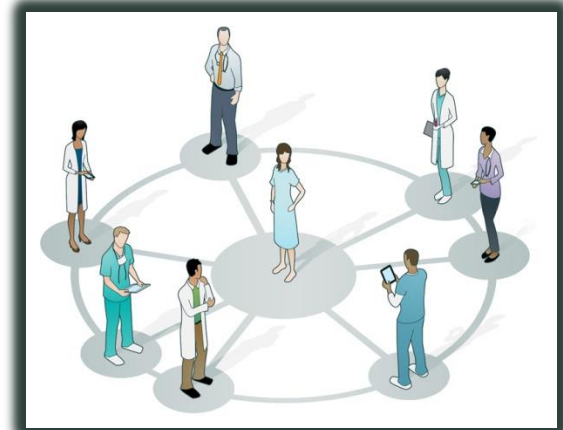
## The PACE Service Recipient is:

- ☞ 55 years old or older
- ☞ Living in a PACE service area
- ☞ Able to reside safely in the community
- ☞ At Nursing Home Level of Care (SPL 1-13)



## The PACE Interdisciplinary Team may include:

- ☞ Medical Doctors
- ☞ Registered Nurses
- ☞ Licensed Therapists
- ☞ Licensed Social Workers
- ☞ Therapeutic Aides
- ☞ Dieticians
- ☞ Other Relevant Healthcare Professionals





# PACE in Oregon

The State of Oregon supports the expansion of the PACE program and PACE providers statewide. Currently, Providence ElderPlace is the only PACE provider in Oregon.

Oregon PACE Service areas include Multnomah and Clatsop counties and parts of Washington, Tillamook and Clackamas Counties with over 1,300 participants.



# ElderPlace Service Areas

ALL OF MULTNOMAH COUNTY

WASHINGTON COUNTY

Beaverton, Tualatin, Cornelius, Forest Grove, Hillsboro,  
Sherwood, Portland

ALL OF CLATSOP COUNTY

TILLAMOOK COUNTY

Manzanita, Nehalem, Wheeler

CLACKAMAS COUNTY

Portland, Happy Valley, Clackamas, Lake Oswego, Marylhurst,  
Gladstone, West Linn, Tualatin, Oregon City

# ElderPlace Service Sites

ElderPlace currently has 9 Health and Social Centers, including 3 that also offer housing. These Centers offer PACE participants comprehensive integrated care from an ElderPlace team of healthcare and social service professionals.

If participants are unable to attend a Health and Social Center, their team will visit them at home. In addition to receiving healthcare services at the Center, participants have the opportunity to participate in social and recreational activities and include a nutritious lunch.

Transportation is provided to and from ElderPlace Health and Social Centers and is available for medical appointments outside of the Center.





# PACE Housing

- ElderPlace has 3 housing locations:
  - Cully (RCF), Glendoveer (RCF) and Irvington Village (ALF)
- ElderPlace contracts with all housing types
  - Adult Foster Homes, Assisted Living Facilities, Residential Care Facilities, Nursing Facilities and Memory Care and CCHP
- ElderPlace also provides In-Home services via contracted in-home agency partners

# PACE Financials

- Whether Medicare/Private/Medicaid, the monthly amount is the same – 98% enrollees are Medicaid eligible
- Monthly amount covers ALL cost of care, medical, MH, etc. including housing
- Some Medicaid consumers may have a State Pay-in
- ElderPlace may be able to be a Rep Payee if no other resource

# Referrals

- Prospective participants may be referred to Providence Intake Specialists at 503-215-6556 or 503-717-7150 (North Coast)
- Referrals may come from Case Managers, community sources (MDs) or others.



# Collaboration and Communication

PACE is a partnership, not just between participants and the program, but with the Local Offices, Providence ElderPlace and the State Central Office. We all share the same goal of enhancing the quality of life for Oregon's aging population!



# PACE Contacts

## **Cindy Susee, PACE Policy Analyst**

Direct Line: 503-945-6448 Email: [Cynthia.susee@dhsosha.state.or.us](mailto:Cynthia.susee@dhsosha.state.or.us)  
PACE Oregon Toll-free: 1-844-224-7223

## **Providence ElderPlace**

**Referral Line: 503-215-6556 or 503-717-7150 (North Coast)**

<http://oregon.providence.org/our-services/p/providence-elderplace/>

## **Medicare.gov PACE Overview**

<http://www.medicare.gov/your-medicare-costs/help-paying-costs/pace/pace.html>

## **Centers for Medicare & Medicaid PACE Fact Sheet**

<http://www.cms.gov/Medicare/Health-Plans/pace/downloads/PACEFactSheet.pdf>

## **National Pace Association**

[www.npaonline.org](http://www.npaonline.org)



# PACE

