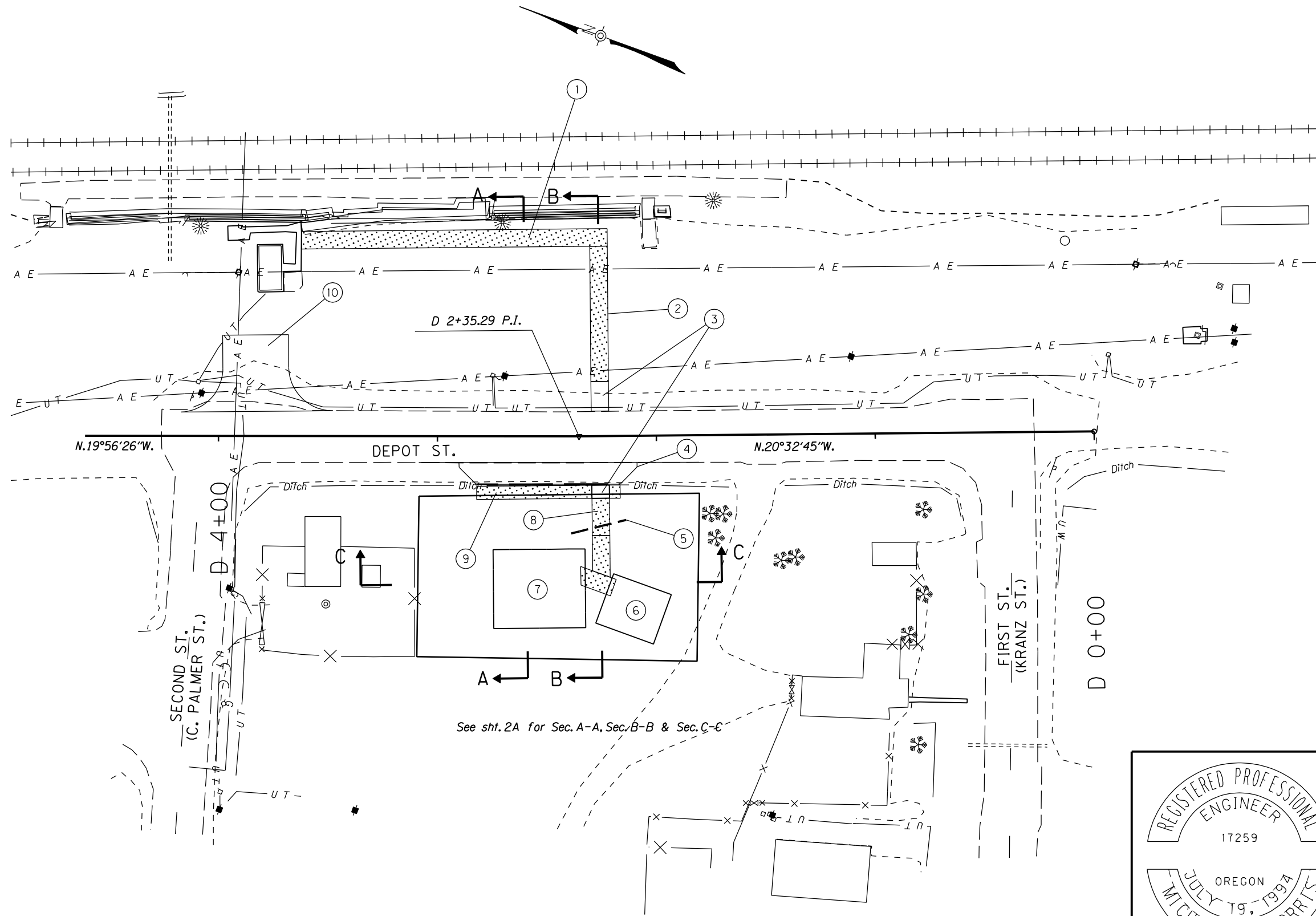
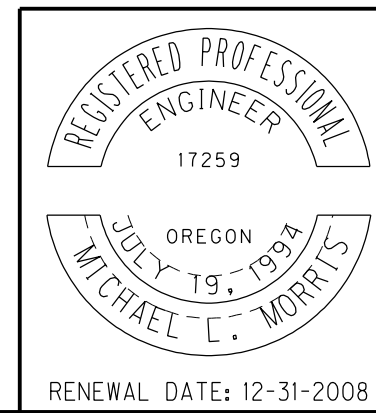


- ① Const. monolithic curb & sidewalk - 1137 sq.ft.
(See drg. no. RD720)
- ② Const. sidewalk - 666 sq.ft.
(See drg. no. RD720)
- ③ Const. sidewalk ramp - 2
(See drg. no. RD755)
- ④ Const. asph. conc. shoulder
(For details, see sht. 2)
- ⑤ Sta. "D" 2+14.1, 38.4' Lt. to Sta. "D" 2+38.9, 44.4' Lt.
Install 12" culv. pipe - 26', 5' depth
Inlet F.L. Elev. - 995.21
Sl. -0.005%
Outfall F.L. Elev. - 995.05
- ⑥ Const. 27' X 25' bldg. pad (By others)
Inst. 13' X 13' restroom (By others)
(For details, see sht. 2B-2)
- ⑦ Const. 42' X 36' bldg. pad (By others)
Inst. 34' X 28' bldg. (By others)
(For details, see sht. 2B-2)
- ⑧ Const. sidewalk - 345 sq.ft.
- ⑨ Const. monolithic curb & sidewalk - 574 sq.ft.
- ⑩ Sta. "D" 3+76.6, Lt.
Const. asph. conc. appr.
Width=30', asph. thickness=3"
(See drg. no. RD715)



See sht. 2A for Sec. A-A, Sec. B-B & Sec. C-C



| | |
|---|-----------------------|
| OREGON DEPARTMENT OF TRANSPORTATION | |
| REGION 4 TECHNICAL CENTER | |
| CHEMULT TRAIN STATION WELCOME CENTER PROJECT | |
| U.S. 97 THE DALLES - CALIFORNIA HIGHWAY KLAMATH COUNTY | |
| Reviewed By - Michael Morris Designed By - Eric Vought Drafted By - Joseph J. Rodriguez | |
| GENERAL CONSTRUCTION | SHEET NO. 3 |