

Approved: _____
Bridge Engineer

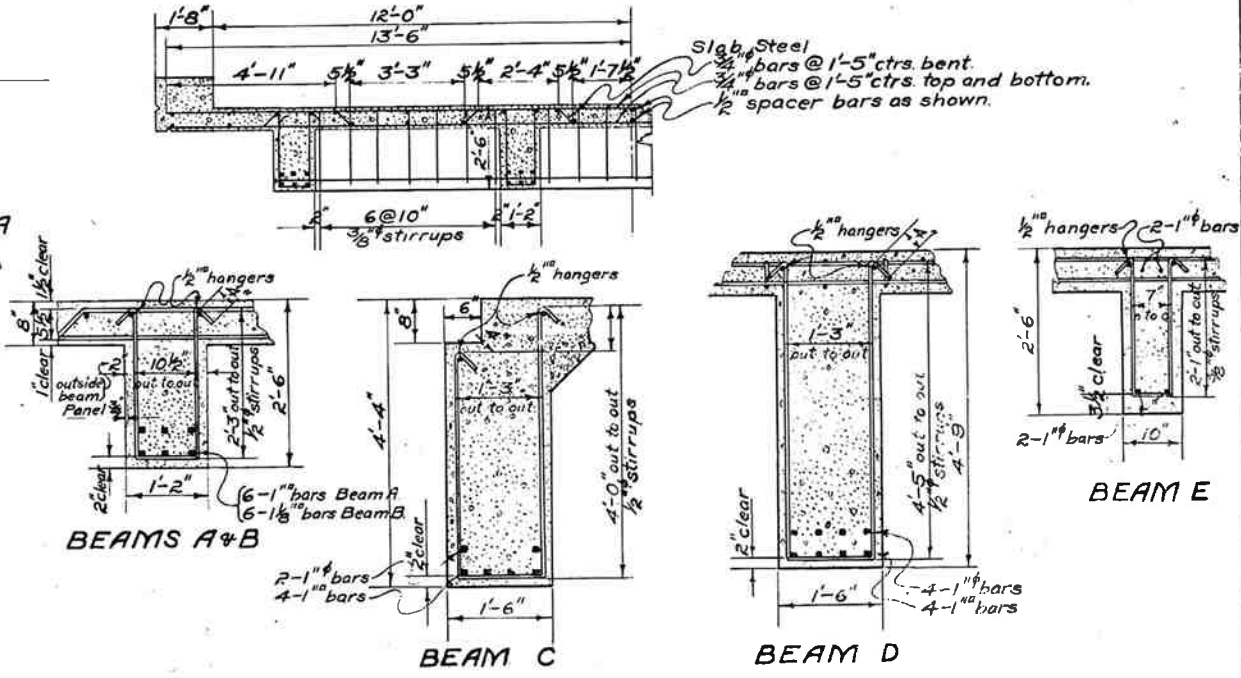
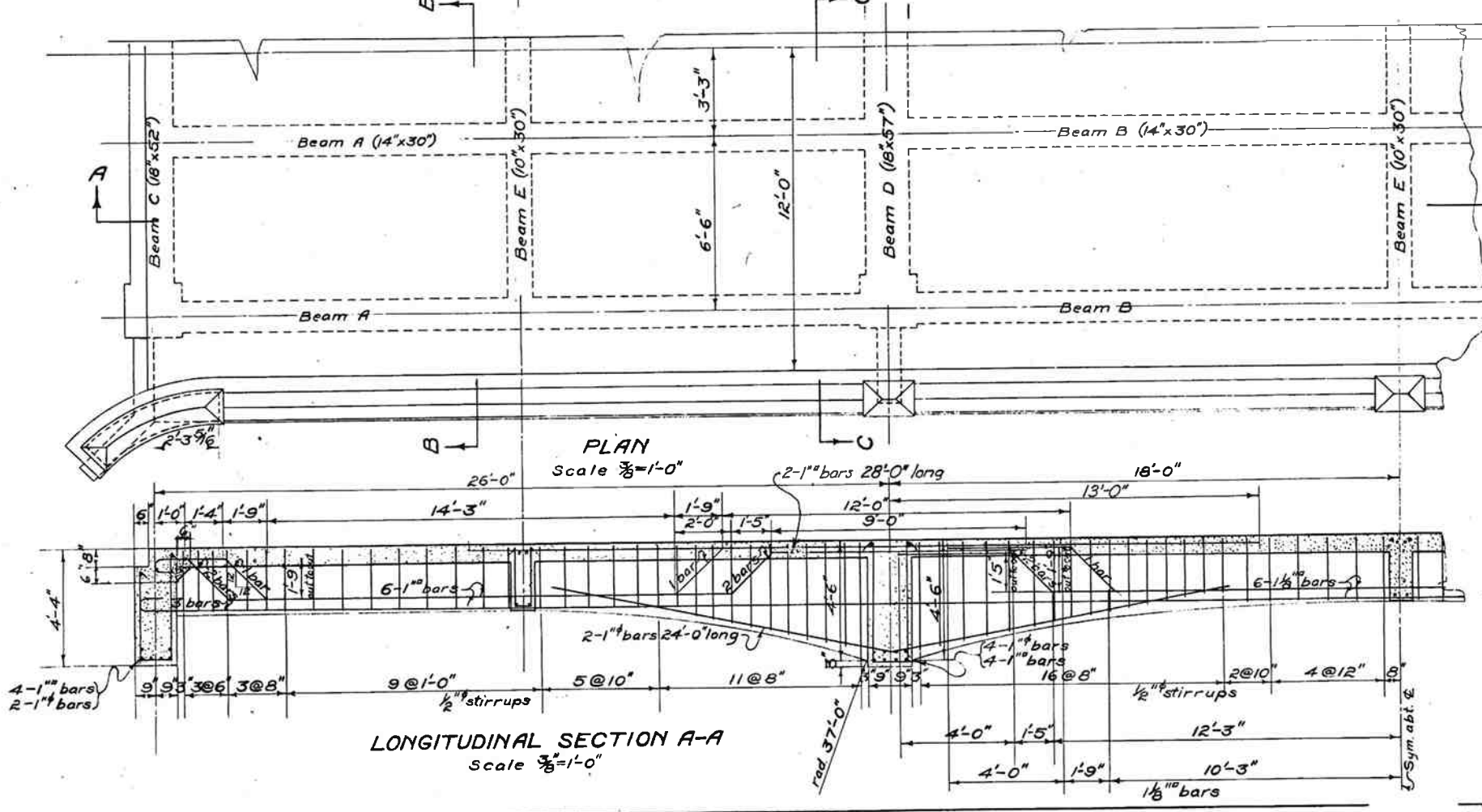
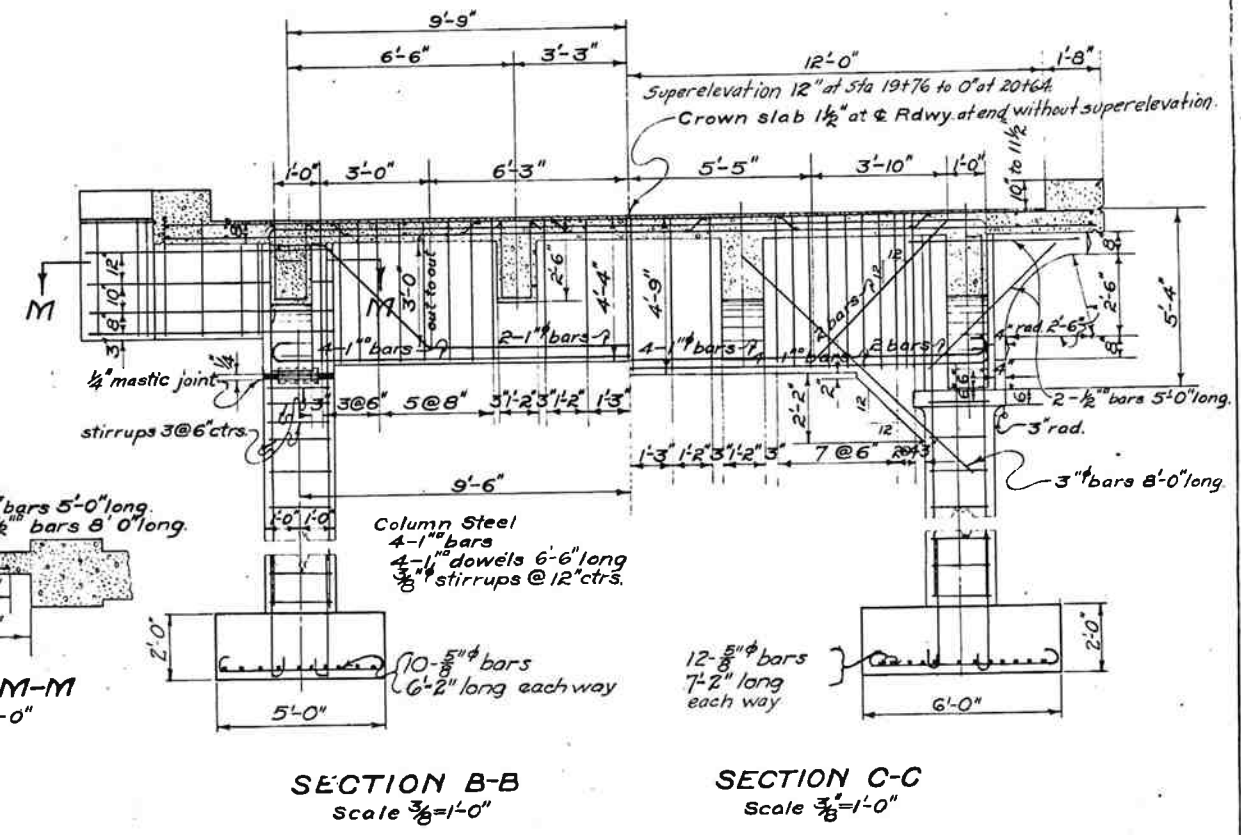
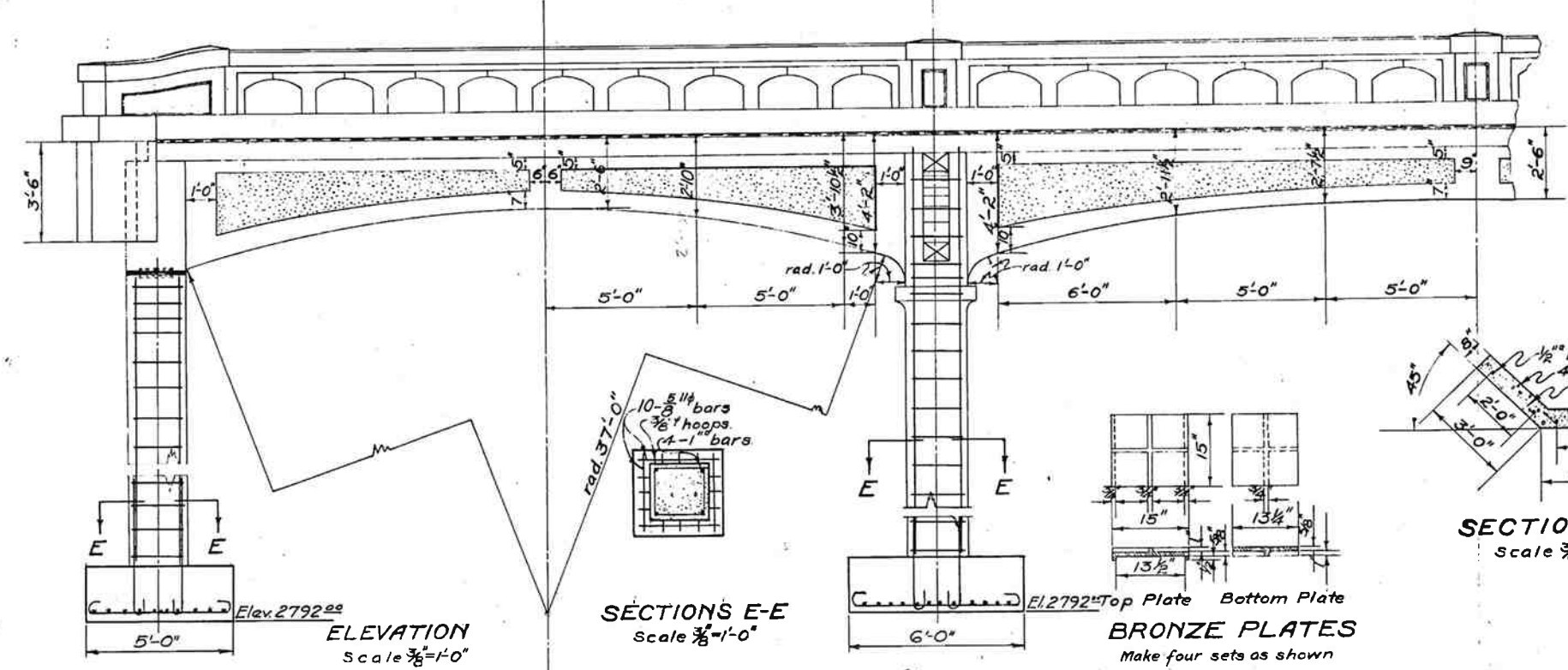
State Highway Engineer

OREGON
STATE HIGHWAY COMMISSION

2 ND. CROSSING
OVER
BRIDGE CREEK—WHEELER COUNTY
ON
OCHOCO HIGHWAY
PLAN & ELEVATION

SCALE AS NOTED. DRAWN BY M.D.R. SHEET 1 OF 3
MAY 17, 1929. TRACED BY M.D.R. BRIDGE NO. 1425.
CALC. BK. NO. CHECKED BY M.D.R. DWG. NO. 3807
ACCOMPANIED BY DWGS. 3808 & 3411

Note: Camber curb and handrail 1 1/2" at E



Approved: _____
State Highway Engineer
Revised 6-27-29

OREGON
STATE HIGHWAY COMMISSION
2 ND. CROSSING
OVER
BRIDGE CREEK WHEELER COUNTY
ON
OCHOCO HIGHWAY
GENERAL DETAILS

SCALE AS NOTED
JUNE 12 1929
CALC. BK. NO.
ACCOMPANIED BY DWGS 3807 & 3411

DRAWN BY
TRACED BY
CHECKED BY W.D.S.
SHEET 2 OF 3
BRIDGE NO. 1425
DWG. NO. 3808

