

- Winter habitat use data will be collected

7. Finances

SPR Project Summary

VENDOR	FY05	FY06	FY'07	FY'08	FY'09	FY'10	TOTALS
ORIGINAL BUDGET	\$ -	\$ -	\$ -		\$ -	\$ -	\$ -
REVISED BUDGET	\$ -	\$ -	\$ -		\$ -	\$ -	\$ -
EXPENDITURES - VENDOR	\$ -	\$ -	\$ -	\$ -	\$ -	\$ -	\$ -
BALANCE	\$ -	\$ -	\$ -	\$ -	\$ -	\$ -	\$ -

ODOT	FY05	FY06	FY'07	FY'08	FY'09	FY'10	TOTALS
ORIGINAL BUDGET	\$ 50,000	\$ 50,000	\$ -	\$ -	\$ -	\$ -	\$ 100,000
REVISED BUDGET	\$ 4,134	\$ 106,007	\$ 4,534	\$ 5,777	\$ 3,731	\$ 3,500	\$ 127,683
EXPENDITURES - ODOT	\$ 4,134	\$ 106,007	\$ 4,534	\$ 5,777	\$ 3,731	\$ 1,127	\$ 125,310
BALANCE	\$ -	\$ -	\$ -	\$ -	\$ -	\$ 2,373	\$ 2,373

PROJECT	FY05	FY06	FY'07	FY'08	FY'09	FY'10	TOTALS
ORIGINAL BUDGET	\$ 50,000	\$ 50,000	\$ -	\$ -	\$ -	\$ -	\$ 100,000
REVISED BUDGET	\$ 4,134	\$ 106,007	\$ 4,534	\$ 5,777	\$ 3,731	\$ 3,500	\$ 127,683
EXPENDITURES - PROJECT	\$ 4,134	\$ 106,007	\$ 4,534	\$ 5,777	\$ 3,731	\$ 1,127	\$ 125,310
BALANCE	\$ -	\$ -	\$ -	\$ -	\$ -	\$ 2,373	\$ 2,373

HIGHWAY 97 DEER MORTALITY UPDATE

Since the last quarterly report, an additional 164 deer have been added to the road-kill database. Current numbers are reflected in the tables and graphs below:

Table 1. Total number of road-killed mule deer on 2 highways in central Oregon, 2005-2009.

Highway	Male	Female	Unknown gender	Total
31 (50miles)	78	180	152	410
97 (100 miles)	308	498	267	1073
Total	386	678	419	1483

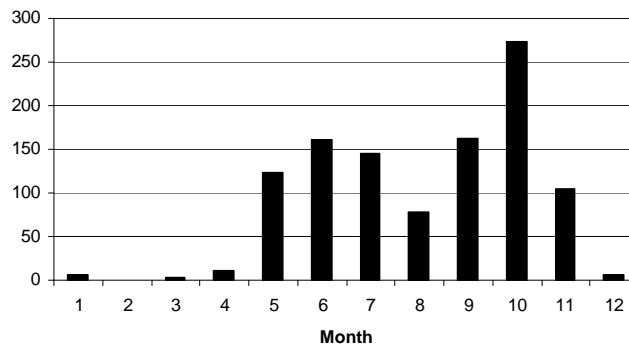


Figure 1. Number of mule deer killed on Highway 97, by month, between milepost 140 – 240 during 2005-2009.

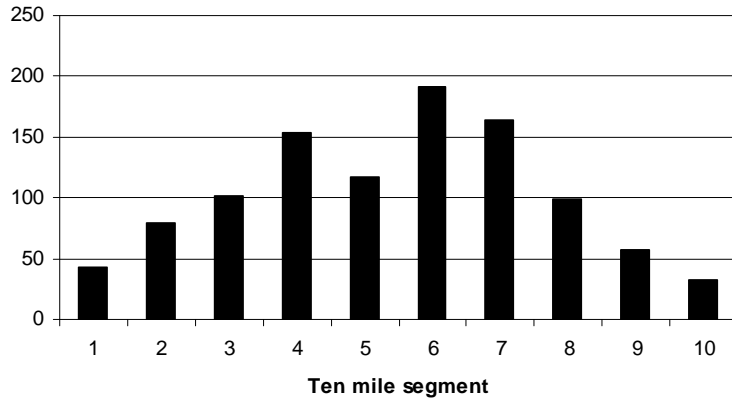


Figure 2. The number of mule deer killed on Highway 97, by ten mile segment, starting at milepost 140 and going south to milepost 240.

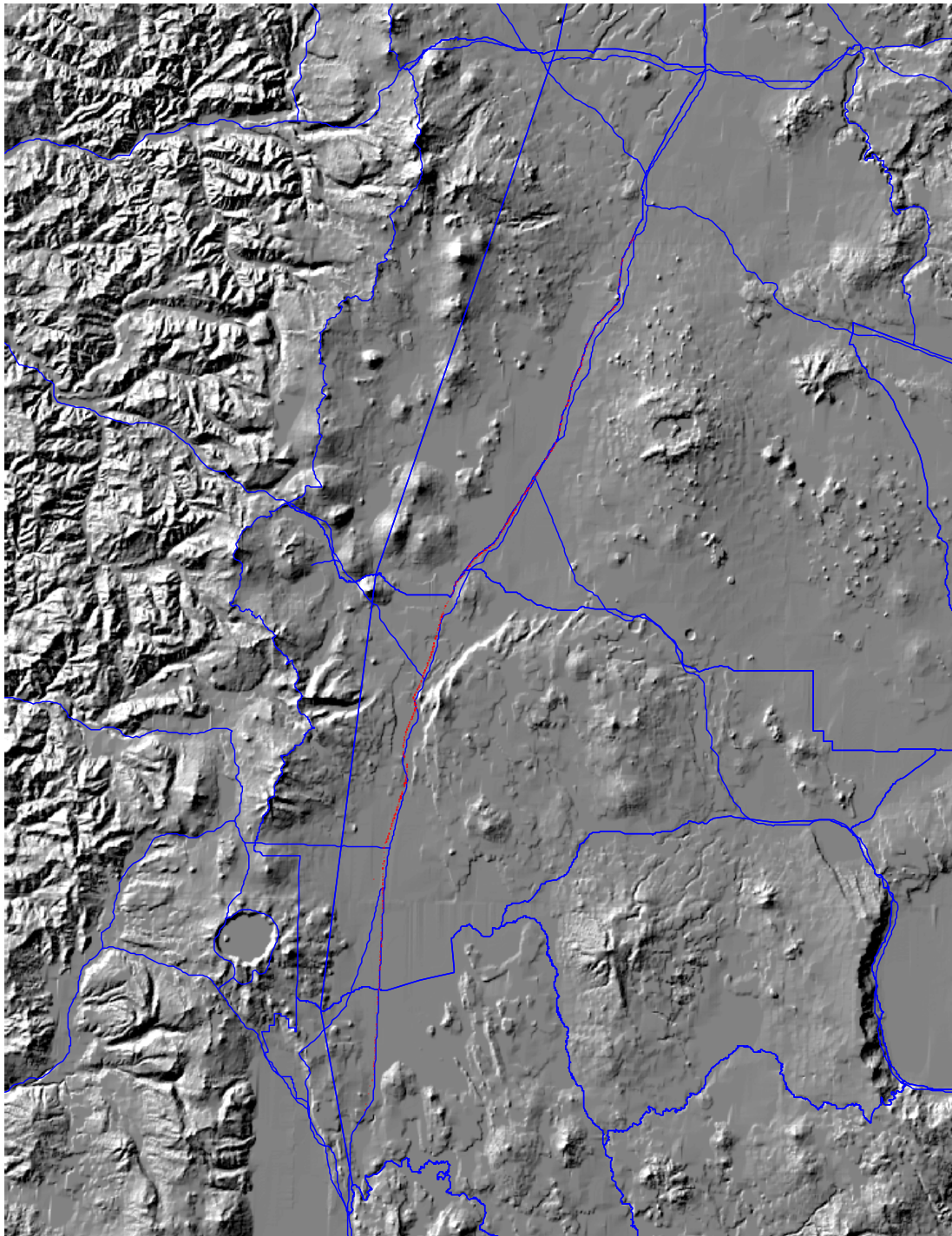


Figure 3. Locations of road-killed deer (red dots) on Highway 97 in central Oregon between milepost 140 – 240, during October of 2005 through September 2009.