



Oregon Occupational Therapy Licensing Board **NEWSLETTER** June, 2005

Oregon OT Licensing Board
800 NE Oregon Street, Suite 407
Portland, Oregon 97232

New Telephones:
OT Office# **971-673-0198**
New Fax: **971-673-0226**

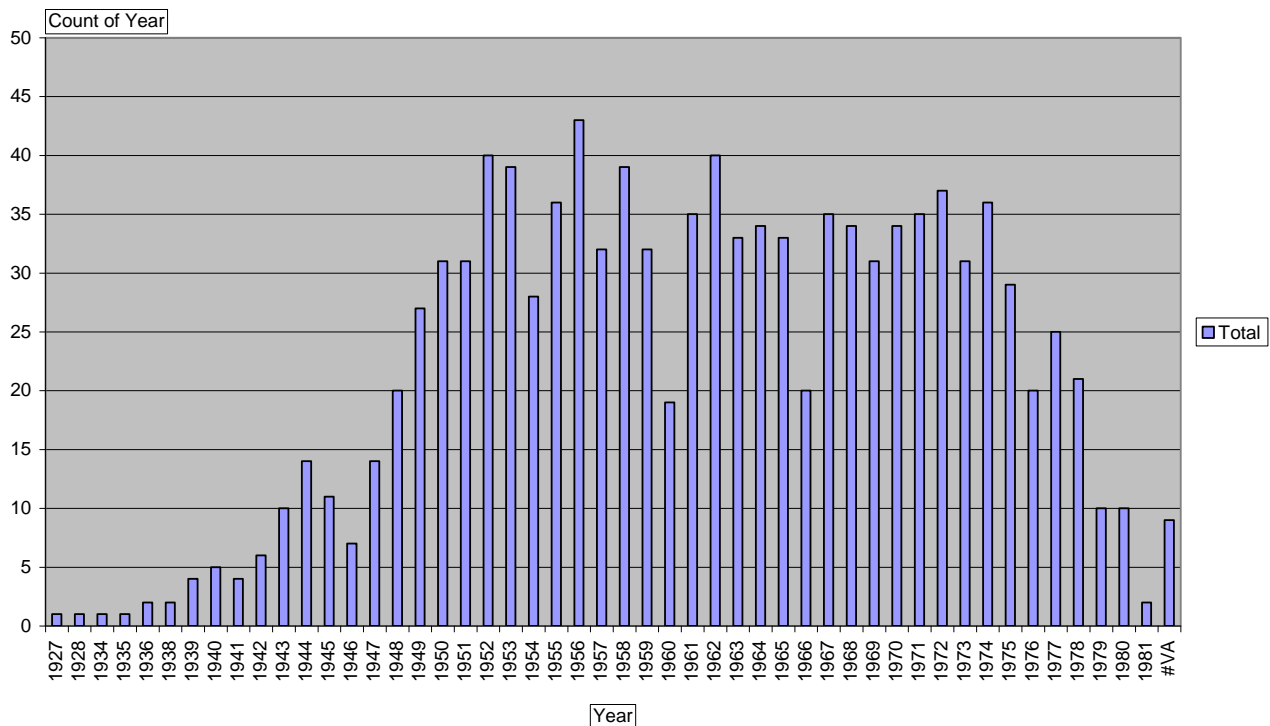
Web site www.otlb.state.or.us
E-mail: otlb.info@state.or.us
Felicia.M.Holgate@state.or.us

Board news: The next meeting changed to **Thursday, July 28, 2005 at 10:30 at the Salem Hospital.** The October meeting will be during the OTA/O conference Friday, October 21, 2005 in Portland. **Check inside for changes being made to rules on CE, Re-Entry, and the OT Definition.** You can comment at the July meeting on the Administrative Rule changes, or call the office or e-mail the Director.



Here is an interesting chart showing the year of birth of occupational therapists in the state. As you can see the 1955 birth year for Occupational Therapists means those OTs are 50 years old.

Age of OT licensees in Oregon by year of birth



Keep working on your CEs !

Remember that with the new two-year licensing you now have two years within which to complete **30** points of CE. When you renew in April or by May 1, 2006 you will need to show that you obtained the mandatory 30 CE points any time within those two years, from 2004 to 2006. If you want information about the categories and credits check on the web site at www.otlb.state.or.us on the menu bar for Continuing Education or call the office at the **new number 971-673-0198**. You can also download the CE log form. Look on the Other Links menu bar for links to CE online classes. (Also see articles that follow on changes to CE)

Use of e-mail and Online Information

If you are willing to change to receiving information online only please contact the director Felicia.M.Holgate@state.or.us or call the office at 971-673-0198. It is helping the OTLB budget! Thank you to many of you who have recently contacted the Board office.

The web site is a great place to look for information: www.otlb.state.or.us Do you know how to put our web site address on your FAVORITES list? When you are on the internet and have www.otlb.state.or.us listed, go to the top menu bar look for Favorites. Click on it and just put Add to Favorites. Next time, just look on that list for the OTLB web site. It makes the web site easy to find.

Has your name or address changed? Be sure to let us know of any name, address or E-mail changes. Send in a copy of official papers if you have a name change. Be sure to include address and phone changes. We prefer to get it **in writing** or e-mail the Director: Felicia.M.Holgate@state.or.us

What is the OT Licensing Board working on?

We are working on a new section on the web site at www.otlb.state.or.us called **Issues, Question and Topics**. The most recent items approved by the board include: Use of Aides, Arrest and Crime, Role of Executive Director, Does an OT need a Doctor's Prescription. We continue to expand this section. If you have any topics or questions you wish to add please let the director know at Felicia.M.Holgate@state.or.us or call the office at the new number at 971-673-0198.



Definition of OT

The current definition of **Occupational Therapy** was written in 1977 when the Board was formed and the legislation written to create the licensing Board. It is found in ORS 675.210(3) and states:

"Occupational therapy" means the analysis and use of purposeful activity with individuals who are limited by physical injury or illness, developmental or learning disabilities, psycho-social dysfunctions or the aging process in order to maximize independence, prevent disability and maintain health. The practice of occupational therapy encompasses evaluation, treatment and consultation. Specific occupational therapy services includes but is not limited to: Activities of daily living (ADL); perceptual motor and sensory integrated activity; development of work and leisure skills; the design, fabrication or application of selected orthotics or prosthetic devices; the use of specifically designed crafts; guidance in the selection and use of adaptive equipment; exercises to enhance functional performance; prevocational evaluation and training; performing and interpreting manual muscle and range of motion test; and appraisal and adaptation of environments for people with mental and physical disabilities. The services are provided individually, in groups, or through social systems."

An OT Definition committee appointed by the Board recommended to the board that it adopt the new AOTA Model definition as a new one for the state. The Board agreed at its April Board meeting. This public process to make the legislative changes to the Oregon OT definition includes obtaining public comments on the proposed changes, having people present comments at future Board meetings in July and October. It will be almost 30 years since the original definition was written. It is time for an update. Any change in the statute must be made by the legislature, and this will be in the 2007 session. You can write to the Board or e-mail to: otlb.info@state.or.us The Board is happy to receive all comments.

On the following page see the proposed new AOTA model OT definition to be adopted:

AOTA Model Practice Act: Definition of Occupational Therapy – to be adopted by Oregon. This is a statutory change the Board will propose in the 2007 legislative session. Prior to that time we will distribute this proposed change to all “stakeholders” to receive their comments:

The practice of occupational therapy means the therapeutic use of everyday life activities (occupations) with individuals or groups for the purpose of participation in roles and situations in home, school, workplace, community, and other settings. Occupational therapy services are provided for the purpose of promoting health and wellness and to those who have or are at risk for developing an illness, injury, disease, disorder, condition, impairment, disability, activity limitation, or participation restriction. Occupational therapy addresses the physical, cognitive, psychosocial, sensory, and other aspects of performance in a variety of contexts to support engagement in everyday life activities that affect health, well-being, and quality of life.

The practice of occupational therapy includes:

- A. Methods or strategies selected to direct the process of interventions such as:
 1. Establishment, remediation, or restoration of a skill or ability that has not yet developed or is impaired.
 2. Compensation, modification, or adaptation of activity or environment to enhance performance.
 3. Maintenance and enhancement of capabilities without which performance in everyday life activities would decline.
 4. Health promotion and wellness to enable or enhance performance in everyday life activities.
 5. Prevention of barriers to performance, including disability prevention.

- B. Evaluation of factors affecting activities of daily living (ADL), instrumental activities of daily living (IADL), education, work, play, leisure, and social participation, including:
 1. Client factors, including body functions (such as neuromuscular, sensory, visual, perceptual, cognitive) and body structures (such as cardiovascular, digestive, integumentary, genitourinary systems).
 2. Habits, routines, roles, and behavior patterns.
 3. Cultural, physical, environmental, social, and spiritual contexts and activity demands that affect performance.
 4. Performance skills, including motor, process, and communication/interaction skills.

- C. Interventions and procedures to promote or enhance safety and performance in activities of daily living (ADL), instrumental activities of daily living (IADL), education, work, play, leisure, and social participation, including:
 1. Therapeutic use of occupations, exercises, and activities.
 2. Training in self-care, self-management, home management, and community/work reintegration.
 3. Development, remediation, or compensation of physical, cognitive, neuromuscular, sensory functions and behavioral skills.
 4. Therapeutic use of self, including one’s personality, insights, perceptions, and judgments, as part of the therapeutic process.
 5. Education and training of individuals, including family members, caregivers, and others.
 6. Care coordination, case management, and transition services.
 7. Consultative services to groups, programs, organizations, or communities.
 8. Modification of environments (home, work, school, or community) and adaptation of processes, including the application of ergonomic principles.
 9. Assessment, design, fabrication, application, fitting, and training in assistive technology, adaptive devices, and orthotic devices, and training in the use of prosthetic devices.
 10. Assessment, recommendation, and training in techniques to enhance functional mobility, including wheelchair management.
 11. Driver rehabilitation and community mobility.
 12. Management of feeding, eating, and swallowing to enable eating and feeding performance.
 13. Application of physical agent modalities, and use of a range of specific therapeutic procedures (such as wound care management; techniques to enhance sensory, perceptual, and cognitive processing; manual therapy techniques) to enhance performance skills.

Adopted by Rep Assembly 5/21/04 (Agenda A11, Charge 60)

OTHER CHANGES MADE BY THE BOARD: Please comment at or prior to the July 28th Board meeting

NOTE Changes shown by: **Bold and underlined words are added** ~~deleted words have a strike through them~~

✦ The wording of the proposed changes in CE, requiring all licensees to obtain CE reads:

339-020-0010 CE Requirements for Current Licensees

(1) All current licensees shall obtain a minimum of 30 points of CE from Board approved categories during the two years immediately preceding the date of the license renewal.

(2) Exception: Current licensees who have had their licenses for less than two full years, but more than one year, shall obtain a minimum of 15 points of CE from Board approved categories during the year immediately preceding the date of the license renewal.

~~Delete current OAR 339-020-0030, 339-020-0040, 339-020-0050, 339-020-0060, 339-020-0070~~

✦ Changes for applicants for licensure reads:

OAR 339-010-0016 Requirements for Applicants for Licensure

(1) All applicants for licensure who have passed the NBCOT certification examination and have not been licensed for up to three years will need 15 credits of board approved continuing education a year prior to becoming licensed in Oregon.

(2) All applicants for licensure who have passed the NBCOT certification examination more than a one year ago and have not been licensed for more than three years will:
(a) successfully complete a Board approved Re-Entry Program specifically designed for occupational therapists preparing them for re-entry into the field of occupational therapy; or
(b) successfully retake and pass the NBCOT examination within the previous year.

(3) The Board has the discretion to waive requirement for license application requirements.

✦ **Change made to 339-020-0100 Mentorship follows.** The purpose is to take out “mentorship” language as it related to applicants (which changed to Re-Entry Program) and only include it as it relates to CE:

~~(1) delete the whole section of mentorship between licensees and non-licensees~~

~~[2] For purposes of mentorship between licensed occupational therapy practitioners, in order to obtain CE credit they shall:~~

~~(a) Enter into a written mentorship agreement signed by both parties that includes a detailed description of the planned and collaborative experience and the goals to be achieved under the plan;~~

~~(b) Provide written documentation signed and dated by both parties that the mentorship was successfully completed, if requested by the Board~~

~~(c) During the mentorship the licensed mentee may practice occupational therapy if the mentee Meets all the experience requirements mandated for practice at the mentorship site.~~

(c) Both the mentor and the mentee may obtain CE credit under OAR 339-020-0020.

339-010-0005 Definitions

(5) “Mentorship”, as it is used in these rules, is a collaborative experience ~~of no less than 40 hours of direct contact between an applicant and a currently licensed occupational therapy practitioner~~ for the purpose of updating professional skills ~~of an applicant~~. Mentorship may include, but is not limited to, mentee observation of the mentor’s practice, classroom work, case review and discussion, and review and discussion of professional literature.

🚩 DIV 20 Administrative Rules 339-020-0020 CE Categories and Credit

Credit for CE shall be calculated on a point basis in the following categories and must relate to occupational therapy services. It is the responsibility of the licensee to demonstrate how specific classes contribute to the development of the occupational therapy skills. "Application to OT Services" (CE Log) must be included for credit. Unless stated otherwise, one point equals one contact hour. Eight to 15 required CE points must come from categories 1-11. A limit of 7 of the required CE points may be accrued from categories 12-17. **These numbers refer to a yearly total of 15 points.**

- (1) Attendance at university, college or vocational technical adult education courses at or above practice level: Four points per credit hour. Documentation of successful completion required.
- (2) Attendance at seminars, workshops, or institutes: One point per direct hour of content.
- (3) Completion of educational telecommunication network or on-line courses: Points as awarded by certificate or per credit, see (1). Certificate of successful completion required.
- (4) Attendance at educational sessions relating to occupational therapy sponsored by OTAO, AOTA, AOTA approved providers, and NBCOT or professional academic institutions relating to occupational therapy: One point per hour of attendance. Certificate of attendance required.
- (5) Satisfactory completion of American Occupational Therapy Association approved courses/materials or courses/materials offered by AOTA approved providers: Points per certificate on completion. Documentation of satisfactory completion required.
- (6) Publication – Copy of publications required.
 - (a) Publication of article in non-peer reviewed publication (e.g. OT Practice, SIS Quarterly, Advance, etc.): Five points per article.
 - (b) Publication of article in peer-reviewed professional publication (e.g. journals, book chapter, research paper): Ten points per article.
 - (c) Publication of chapter(s) in occupational therapy or related textbook: Ten points per chapter.
- (7) Professional presentation (person presenting): Presentation must be at practice level for credit, e.g. CNA training would not be acceptable: Two points per hour with no additional points for subsequent presentation of same content. Course outline must be provided.
- (8) Development of alternative media (computer software, video or audio tapes): Three points/hr of finished product. Outline required.
- (9) Completing requirements for occupational therapy specialty certification (initial or recertification one time only for each specialty): 12 points. Copy of certificate required.
- (10) Research, provided an abstract of the research is retained to prove participation: Principal – Eight points. Associate – Six points.
- (11) Development and implementation of a school approved Level II student program (one time only and completed within a year): Four points. Copy of program must be provided.
- (12) In-service training: One point per hour of attendance.
- (13) Attendance at videotaped presentations of educational courses, seminars, workshops or institutes (group viewing with discussion): One-half point per direct hour of viewing with additional points for discussion, not to exceed seven points.
- (14) Student supervision, Level I Fieldwork: ~~One half point per student per week (or portion of a week) of supervision.~~ **One point for 8 hours.**
- (15) Student supervision, Level II Fieldwork: ~~One point per student per week (or any portion of a week) of supervision.~~ **One point for 8 hours.**
- (16) Mentoring; as defined in OAR-339-020-0100010-0005: One point for every eight hours contract mentoring with documentation. **Points may be obtained for both the mentor and the mentee.**
- (17) Professional leadership **on a Board or Commission relating to OT** – Volunteer services to organizations, populations, and individuals that advance the reliance on and use of one's occupational therapy skills and experiences to the volunteer setting or experience: 10 hours equal two points. Up to four points a year with documentation.
- (18) Re-Entry Supervisors: Therapists providing supervision under OAR 339-010-0016: One point for 8 hours.**

✚ To change language deleting the term “handicap” as used in the current rule follows:

339-010-0050 Occupational Therapy Services **for children** in an Educational Setting ~~for Children with Handicap . . .~~

(2) Appropriate documentation of services for children ~~with handicap~~ in the education setting.

If you wish to comment on any of the above Rule changes (OAR Oregon Administrative Rules Chapter 339) contact the Board office by phone or e-mail or letter. If you wish to comment on the changes to the OT definition do the same, but realize that is a change to the law which will not be considered until the 2007 legislative session. This is an open, public process and the Board welcomes all comments and questions.

Board Members:

Genevieve deRenne, MA, OTR/L, FAOTA, Chair
Greg Thielen, OTR/L
Joyce Browne, OTA/L
Jeffrey Roehm, Ph.D. Public Member, Vice-Chair
Tom Ruedy, Public Member

OTLB Staff:

Felicia M. Holgate, Director
Rod Lemeni, Office Assistant (2 hours/day)
Felicia.M.Holgate@state.or.us

* * * * *

Oregon Occupational Therapy Licensing Board
800 NE Oregon Street, Suite 407
Portland, Oregon 97232