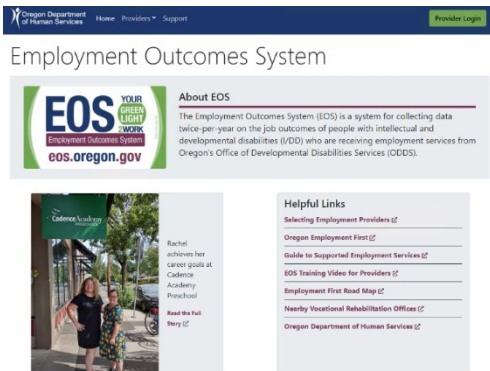




Nov. 19, 2021

To: Employment First Stakeholders
From: Acacia McGuire Anderson, Statewide Employment First Coordinator
Re: Changes to Employment Outcomes System



This message is about changes to the Employment Outcomes System (EOS).

EOS is one of the primary tools used by the Office of Developmental Disabilities Services (ODDS) to collect data from providers on employment outcomes. Providers are required to enter their data into EOS twice per year. In addition, people with intellectual and

developmental disabilities (I/DD), family members and case managers can use EOS to find providers and make choices based on services offered.



Some of the big changes to EOS include:

- An updated tool to help website users easily compare employment providers and services ranging from benefits counseling to job coaching
• Providers can now specify service capacity by county
• A new "employment dashboard" tab that helps visualize the employment progress that Oregon has achieved
• Easier access for providers to get into EOS and update data and capacity information
• A new homepage look, including color scheme and EOS branding

The website is: https://eos.oregon.gov/.

There is a training video (https://www.youtube.com/watch?v=nljg15lrmAA) to help providers learn how to put their data into EOS. Remember: while the twice-yearly reporting is required, providers can go into EOS at any time to update capacity. For instance, if a provider organization has benefits counseling or job

coaching capacity in a specific county, they can enter that so individuals in services and case management entities can see where there is capacity.

Thank you for your dedication to serving people with intellectual and developmental disabilities in Oregon.

Acacia