

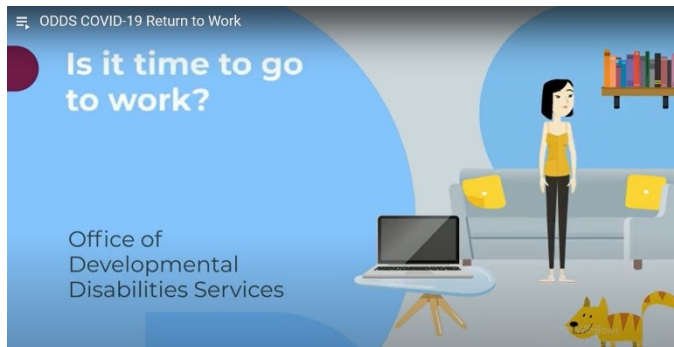
September 4, 2020

To: Employment First stakeholders

From: Acacia McGuire Anderson, Statewide Employment First Coordinator

Re: [Employment First](#): New Return to Work Video

(Please forward to your local partners & stakeholders)



Employment First is committed to doing everything possible to support people who want to work in the community.

Some people have been working throughout the pandemic, and they should continue to have the supports they need to be successful. Safety

remains a top priority, and making sure the worker is protected as appropriate for their job.

For that reason, we have released a new [Powtoon animated video](#) with helpful information and tools to help people make a decision on whether or not they want to return to work. The video is available in [English](#) and in [Spanish](#). Please share this video widely.

There is also a [written tool](#) for helping a person make an informed choice on returning to work and other activities. There are also a variety of other tools for people, including a [template for Lifecourse Star](#), an example of a [Lifecourse Star for COVID-19](#), a template for [Lifecourse Trajectory](#), and an example of [Lifecourse Trajectory during COVID-19](#).

We hope these tools are helpful as people decide to return to work or increase their hours in making the best decisions for their personal health and safety.

Thanks as always for your support in serving people with intellectual and developmental disabilities in Oregon.

Acacia