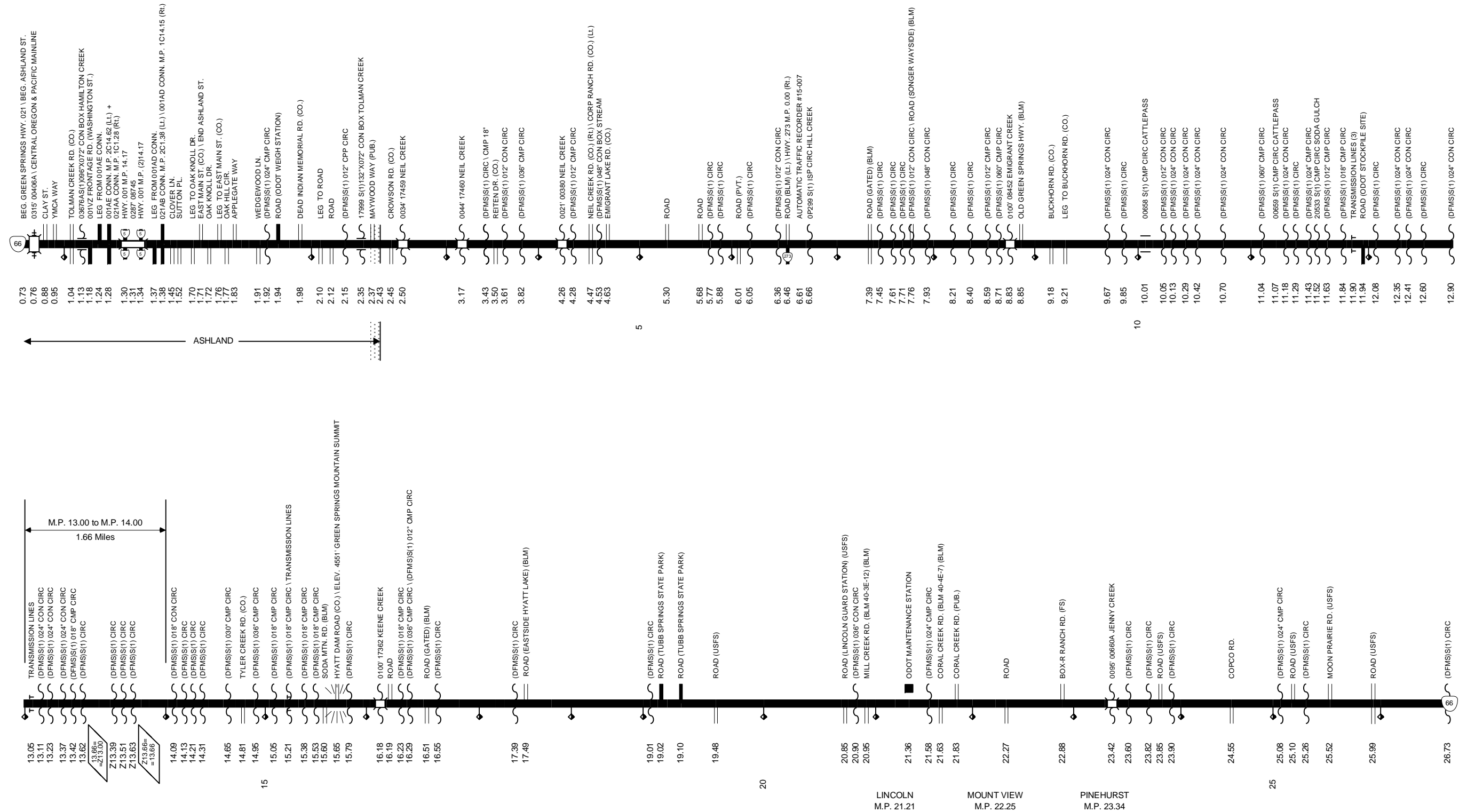


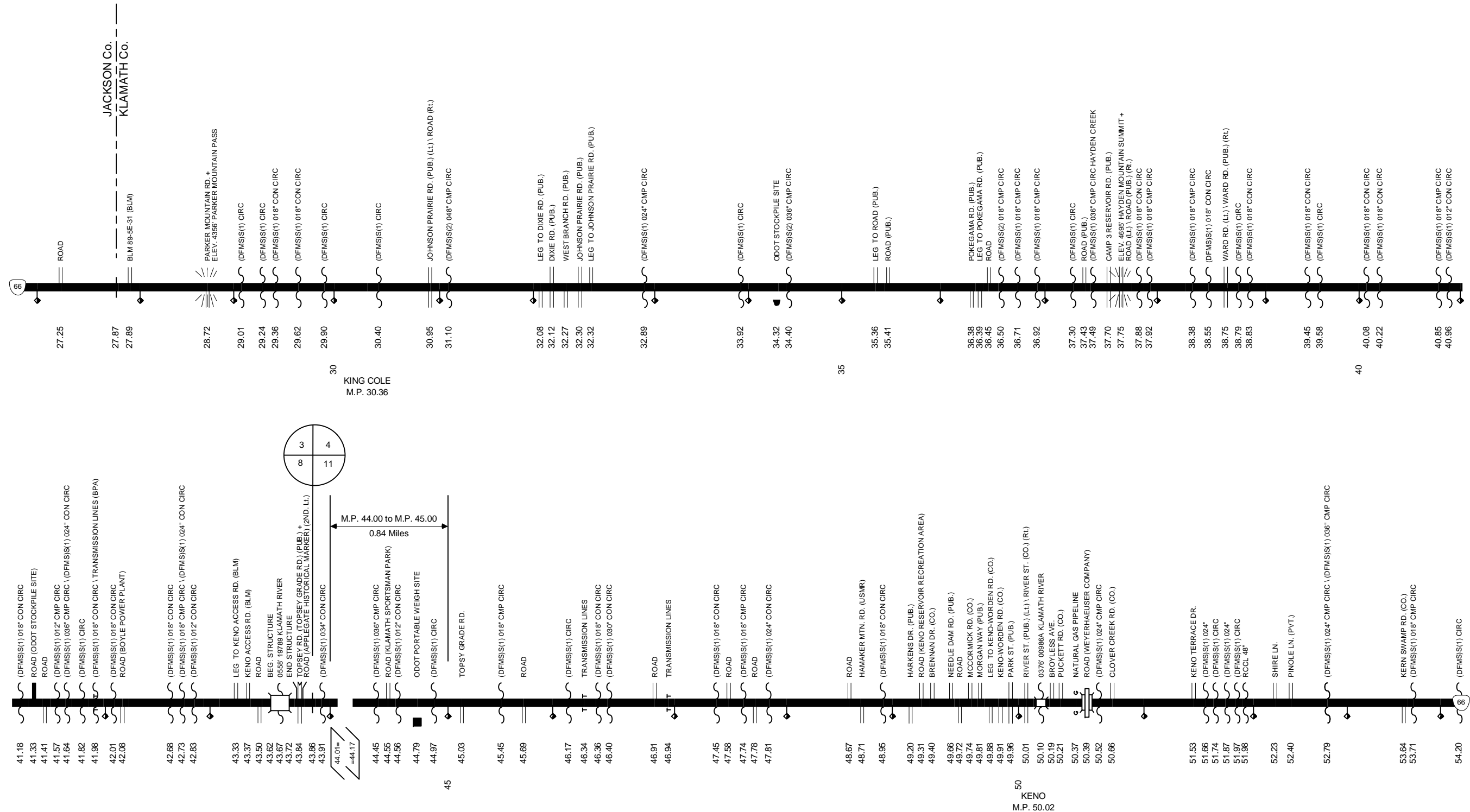
Region 3 District 8

GREEN SPRINGS HIGHWAY No. 21



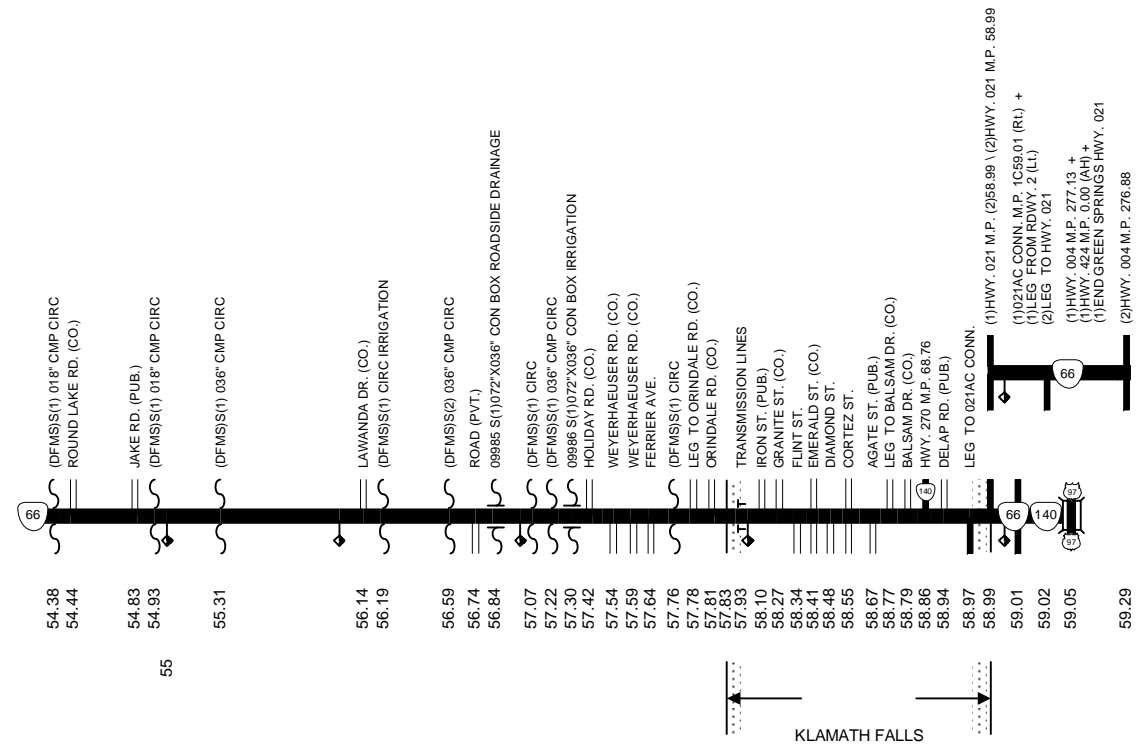
Region 3 District 8 / Region 4 District 11

GREEN SPRINGS HIGHWAY No. 21

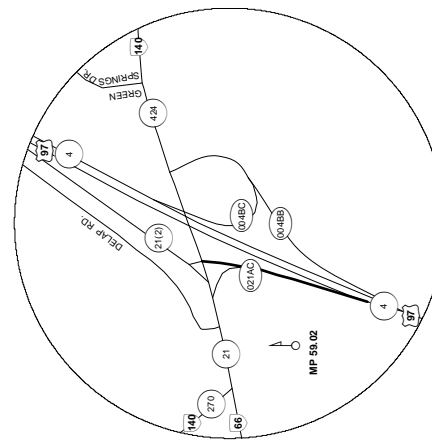


Region 4 District 11

GREEN SPRINGS HIGHWAY No. 21



GREEN SPRINGS HWY. CONNECTION

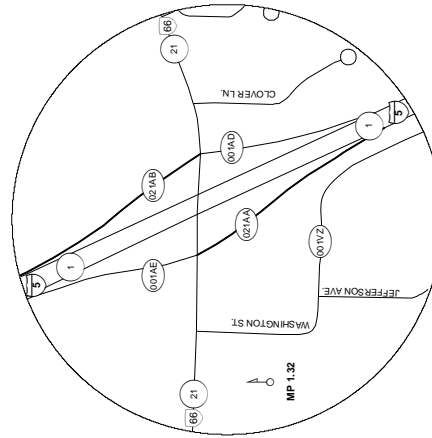


CONNECTION No. 1 (021AC)

59.01 GREEN SPRINGS HWY. CONNECTION \ HWY. 021 M.P. 59.01
 59.05 LEG FROM HWY. 021
 59.18 HWY. 004 M.P. 277.33

Total Length 0.17 Miles

PACIFIC HWY. CONNECTIONS



CONNECTION No. 1 (021AA)

1.28 PACIFIC HWY. CONNECTIONS +
 HWY. 021 M.P. 1.28 \ 001AE CONN. M.P. 2C14.62 (BK)
 (DFMS(S) 018" CIRC

1.33
 1.49
 1.55 HWY. 001 M.P. 13.93

Total Length 0.27 Miles

CONNECTION No. 2 (021AB)

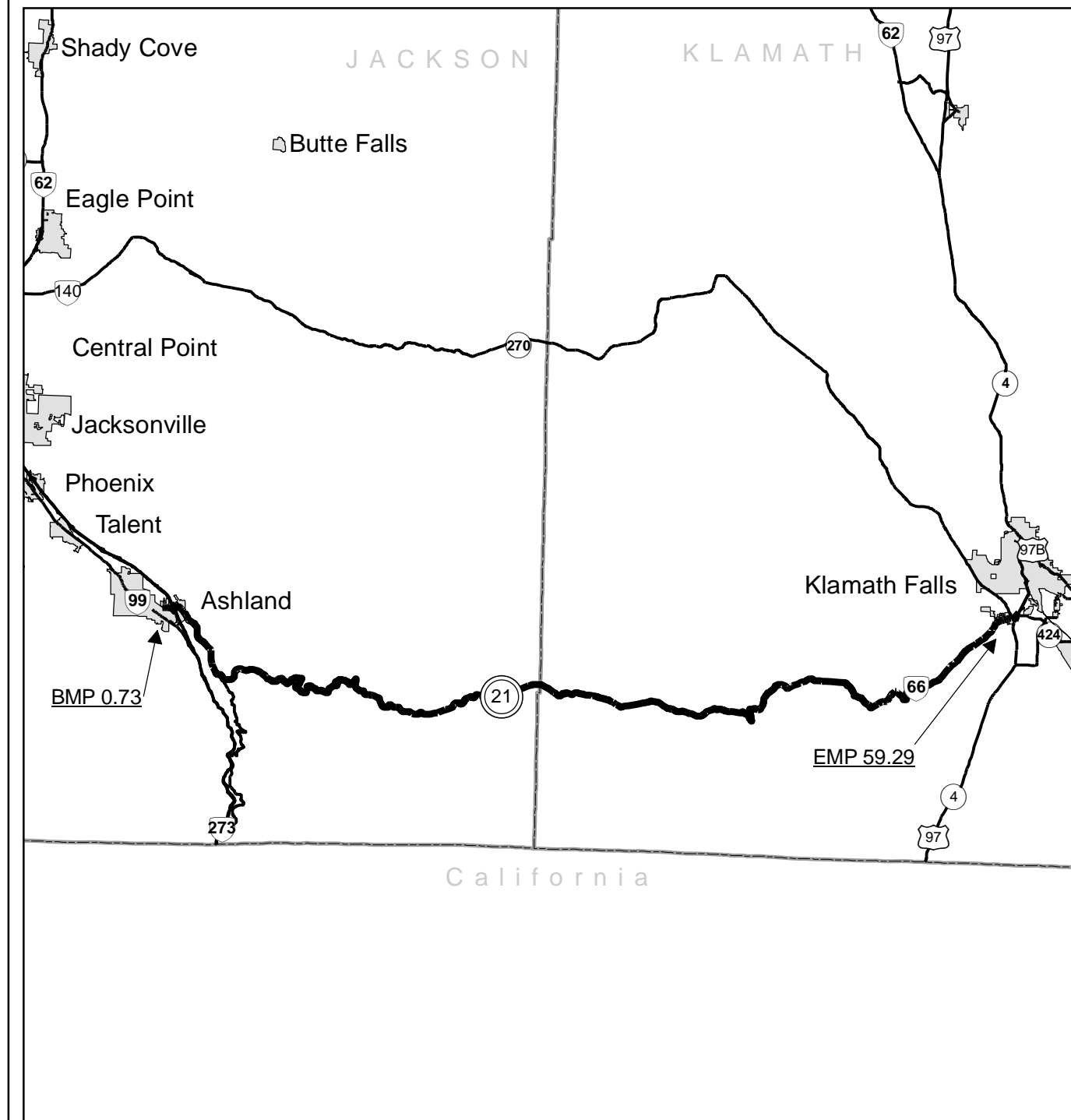
1.38 HWY. 021 M.P. 1.38 \ 001AD CONN. (BK)
 1.65 HWY. 001 M.P. (2)14.42

Total Length 0.27 Miles

Region 3 District 8 / Region 4 District 11

GREEN SPRINGS HIGHWAY No. 21

Sheet 4 of 4
February 2009



Legend

- Silver Creek Falls Hwy 163
- State Highways
- County Boundaries
- City Limits

Interstate, US Route, State Route Markers

State Highways

0 2.5 5 10 Miles

			Urban Area	
EQUATIONS:	LOSS	GAIN		
M.P. 213.00 = M.P. 213.66		0.66	TOTAL MILEAGE	58.82 3.34
M.P. 44.01 = M.P. 44.17	0.16		Located Line	0.00 0.00
Totals	-0.16	+0.66	Temporary Route	0.00 0.00
DUPLICATE MILEAGE:			Existing Highway	58.82 3.34
None			ADDITIONAL MILEAGE	0.71
Note:			Connections	0.71
Jurisdiction of intersecting local roads as of:			Frontage Roads	0.00
Jackson County	2008		EXCLUDED MILEAGE	0.30
Klamath County	2007		Located Line	0.00
			Temporary Route	0.00
			Roadway 2	0.30