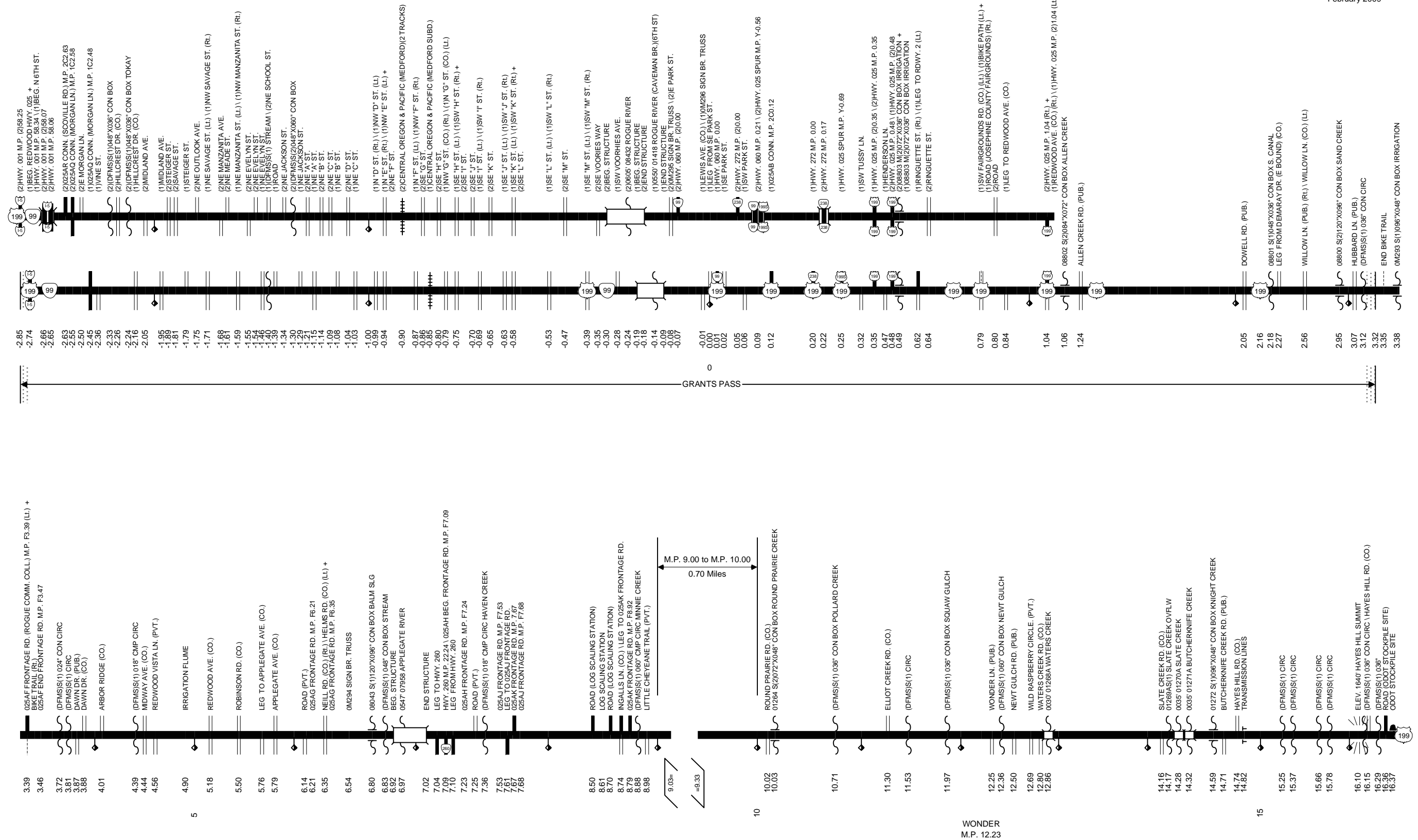


# Region 3 District 8

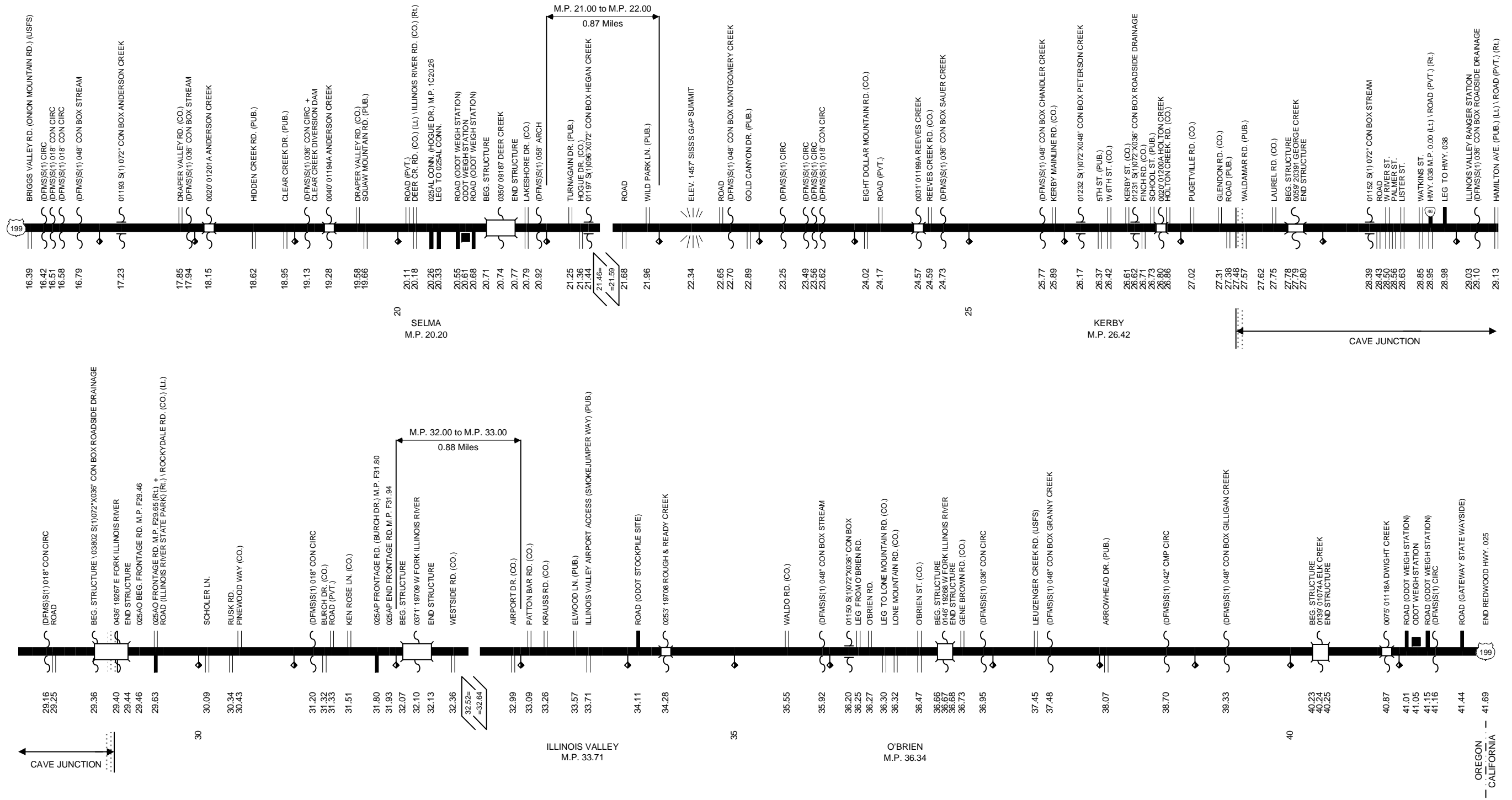
# REDWOOD HIGHWAY No. 25

Sheet 1 of 5  
February 2009



# Region 3 District 8

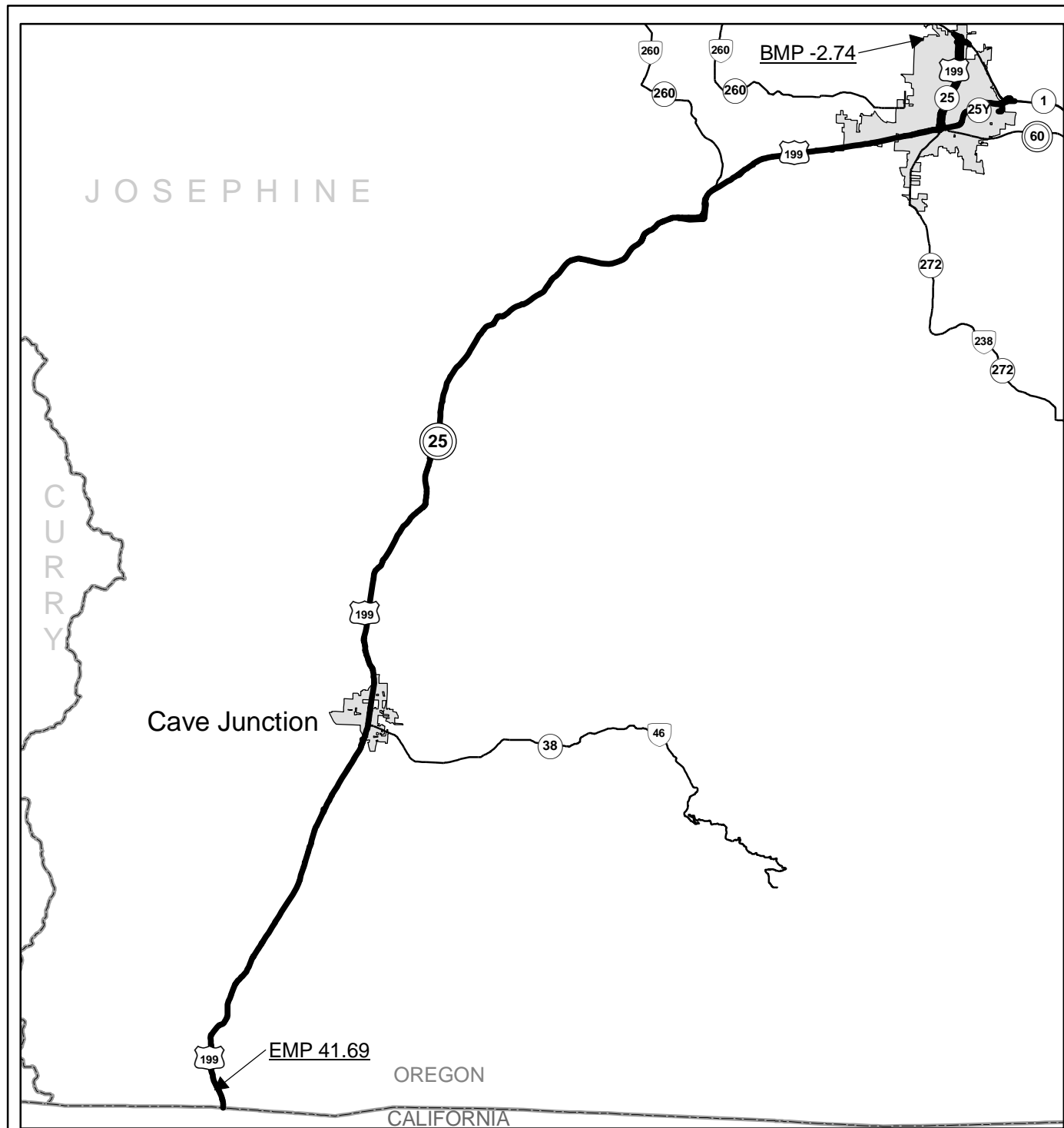
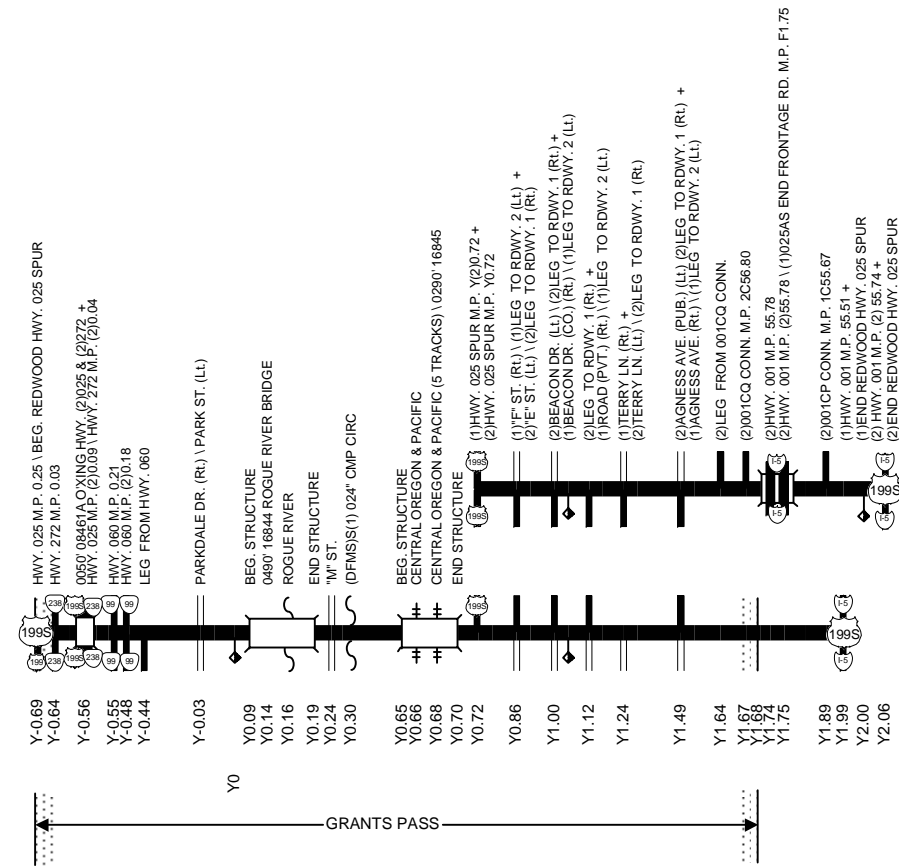
# REDWOOD HIGHWAY No. 25



# Region 3 District 8

# REDWOOD HIGHWAY No. 25

Sheet 3 of 5  
February 2009



EQUATIONS: 9.03 = 9.33 21.46 = 21.59 32.52 = 32.64 TOTAL -0.55 MILES  DUPLICATE MILEAGE: None  Note: Jurisdiction of intersecting local roads as of: Josephine County 2007	LOSS			Urban Area
	-0.30 MILES	TOTAL MILEAGE (w / Spur)	46.56	6.33
	-0.13 MILES	Spur	2.68	2.68
	-0.12 MILES	Temporary Route	0.00	0.00
		Existing Highway	43.88	6.33
		ADDITIONAL MILEAGE	3.16	
		Connections	0.61	
		Frontage Roads	2.55	
		EXCLUDED MILEAGE (w/ spur)	5.23	
		Located Line	0.00	
	Temporary Route	0.00		
	Roadway 2 (w/ Spur)	5.23		

**Legend**

- State Highway No. 25
- State Highways
- City Limit
- County Boundary
- Interstate, US Route, State Route Markers
- State Highways

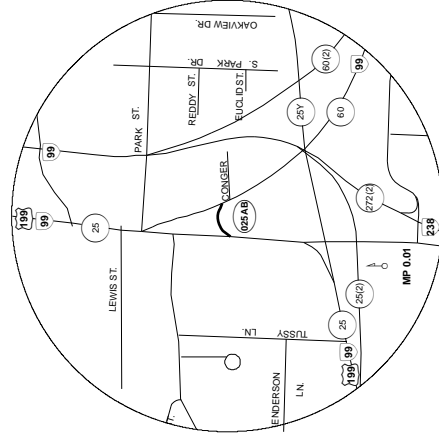
0 2 4 8 Miles

NOTE: Milepoints on Straightline Chart are not to scale.

# Region 3 District 8

# REDWOOD HIGHWAY No. 25

## REDWOOD CONNECTION NO. 2



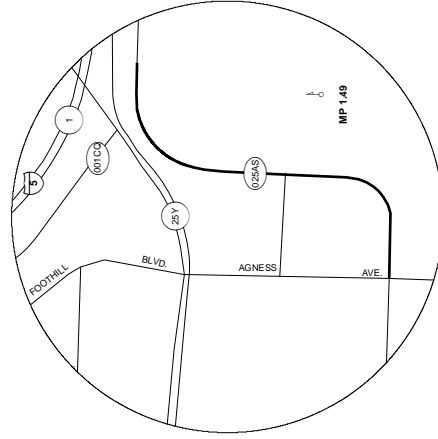
### CONNECTION No. 2 (025AB)

0.12 HWY. 025 M.P. 0.12  
 0.15 HWY. 060 M.P. 0.10

Total Length 0.03 Miles



## FOOTHILL BLVD. FRONTAGE RD.



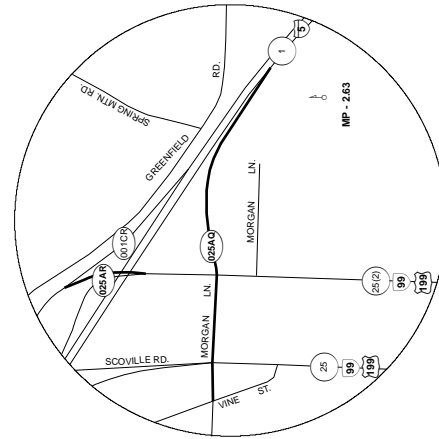
### FRONTAGE RD. (025AS)

1.30  
 1.38  
 1.75

Total Length 0.45 Miles



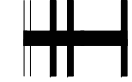
## MORGAN LANE CONNECTIONS



### CONNECTION No. 1 (025AQ)

2.45 VINE ST.  
 2.48 HWY. 025 (6TH ST.) M.P. -2.45  
 2.58 HWY. 025 (7TH ST.) M.P. (2.55) BEG. ONE-WAY TRAFFIC  
 2.59 BEG. NH-S001(44) CNT. NO. 11864  
 2.82 HWY. 001 M.P. 57.80

Total Length 0.37 Miles



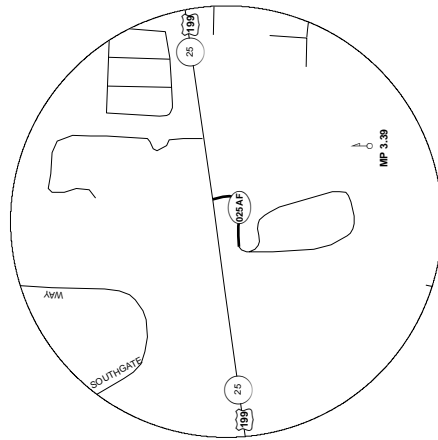
### CONNECTION No. 2 (025AR)

2.63 HWY. 025 M.P. (2)-2.63  
 2.65 HWY. 001 M.P. 58.06  
 2.68 HWY. 001 M.P. (25)8.06  
 2.75 80' CR CONN. M.P. 1.058.11

Total Length 0.10 Miles



## ROGUE COMMUNITY COLLEGE FRONTAGE RD.



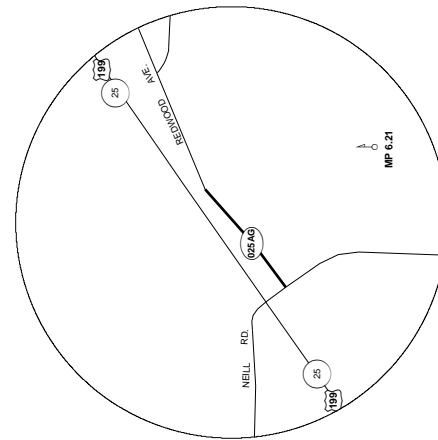
### FRONTAGE RD. (025AF)

3.39 HWY. 025 M.P. 3.39  
 3.40 ROAD (PVT)  
 3.47 COMMUNITY COLLEGE

Total Length 0.08 Miles



## HELMS FRONTAGE RD.



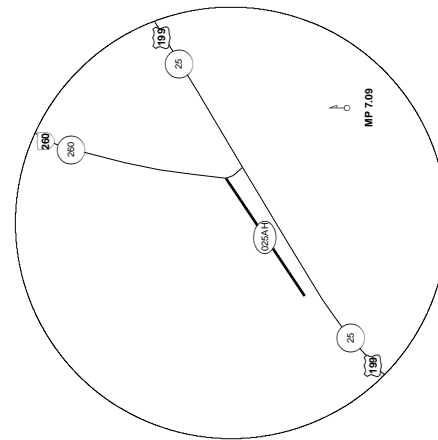
### FRONTAGE RD. (025AG)

6.21 HWY. 025 OPP. M.P. 6.21 \ REDWOOD AVE. (CO.) (BK.)  
 6.29 ROAD  
 6.35 HELMS RD (CO.)

Total Length 0.14 Miles



## APPLEGATE RIVER FRONTAGE RD.



### FRONTAGE RD. (025AH)

7.09 HWY. 025 OPP. M.P. 7.09 \ HWY. 260 M.P. 22.21  
 7.24 R/W LINE

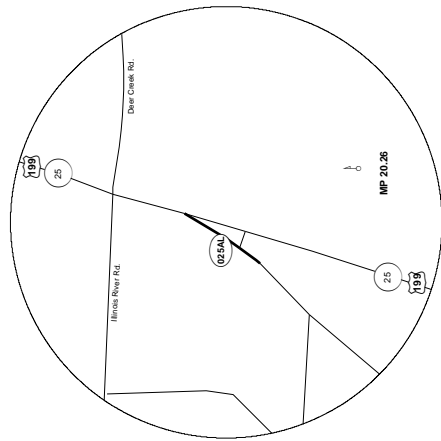
Total Length 0.15 Miles



Region 3 District 8

REDWOOD HIGHWAY No. 25

HOGUE DR. CONNECTION



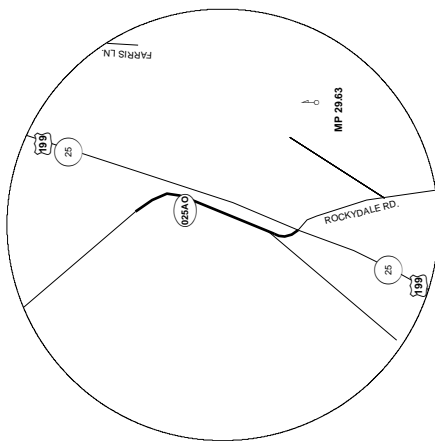
CONNECTION No. 1 (025AL)

20.26 HWY. 025 M.P. 20.26  
 20.35 LEG FROM HWY. 025  
 20.37 HOGUE DR.



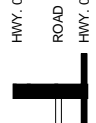
Total Length 0.11 Miles

E FORK ILLINOIS RIVER FRONTAGE RD.



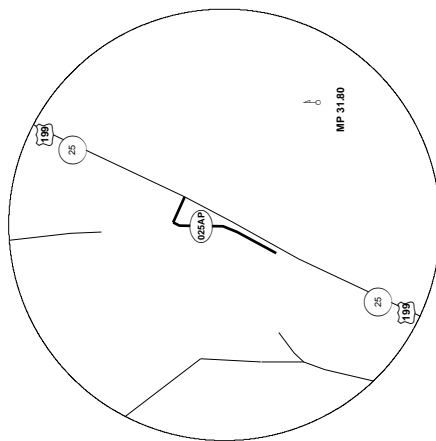
FRONTAGE RD. (025AO)

29.46 HWY. 025 OPP. M.P. 29.46 \ ROAD (BEHIND)  
 29.62 ROAD  
 29.65 HWY. 025 M.P. 29.63



Total Length 0.19 Miles

W FORK ILLINOIS RIVER FRONTAGE RD.



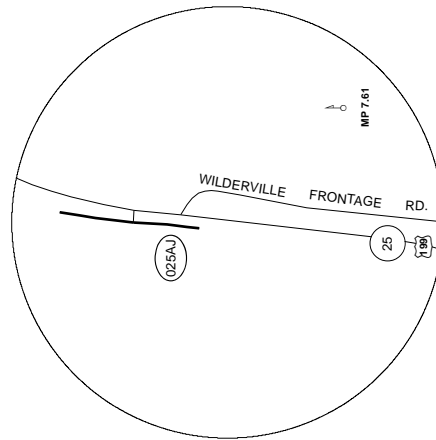
FRONTAGE RD. (025AP)

31.80 HWY. 025 M.P. 31.80  
 31.83 BURCH DR. (BARRICADED '06) (CO.)  
 31.89 ROAD (PVT.)  
 31.94 END OPP. HWY. 025 M.P. 31.93



Total Length 0.14 Miles

HAVEN CREEK FRONTAGE RD.



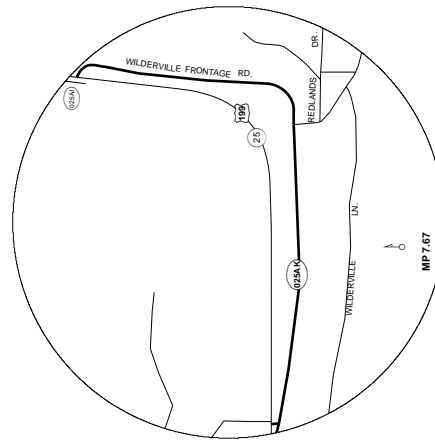
FRONTAGE RD. (025AJ)

7.53 HWY. 025 OPP. M.P. 7.53  
 7.61 025AJ CONN. M.P. 1C7.62  
 7.68 HWY. 025 OPP. M.P. 7.68



Total Length 0.15 Miles

WILDERVILLE FRONTAGE RD.



FRONTAGE RD. (025AK)

7.67 HWY. 025 M.P. 7.67  
 8.20 FISH HATCHERY RD. (CO.)  
 8.87 LEG FROM HWY 025  
 8.92 HWY. 025 M.P. 8.79



Total Length 1.25 Miles