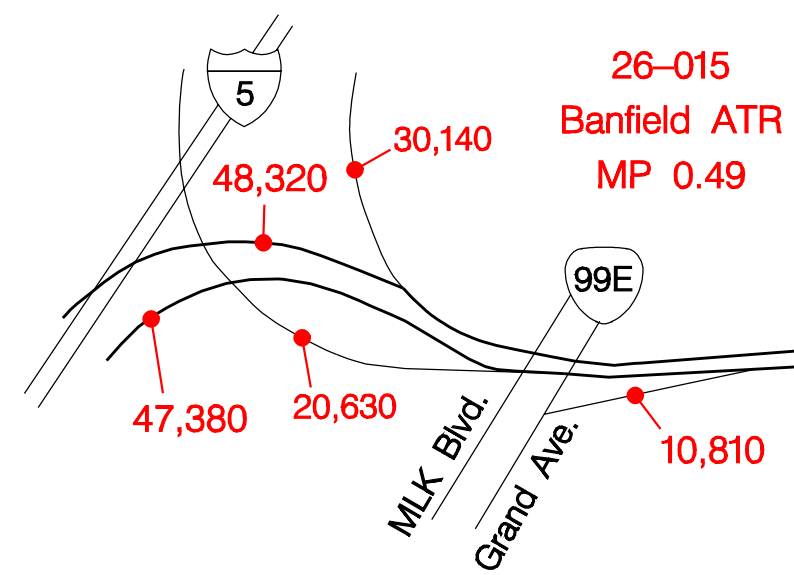


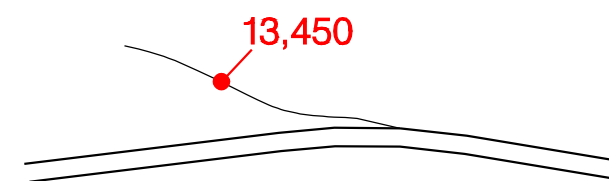
INTERSTATE INTERCHANGES AND REST AREAS

Pacific Hwy. Exit 0



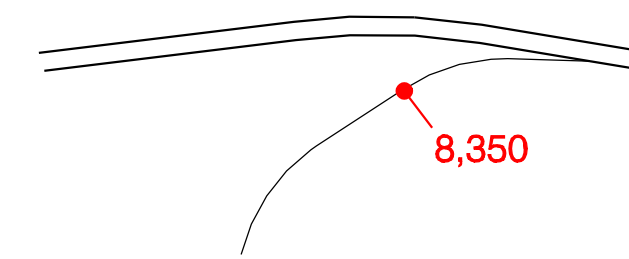
78,460
78,820

NE Holladay St. – Exit 1A



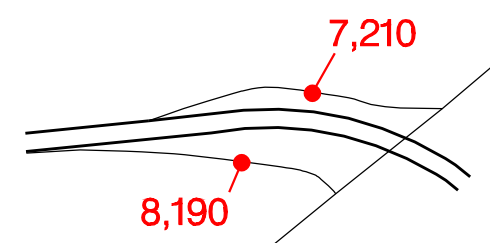
91,910
78,820

NE 16th Ave. – Exit 1B



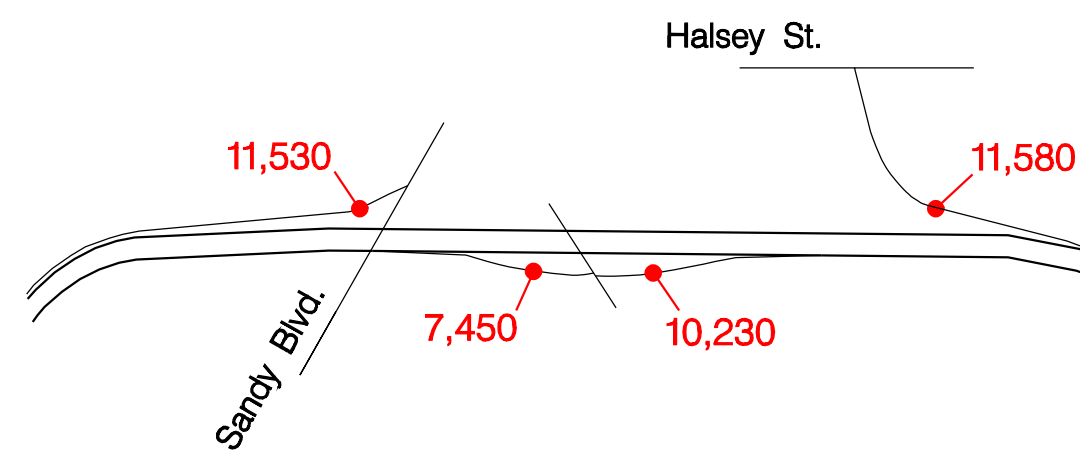
91,910
87,170

NE 33rd Ave. – Exit 2A



84,700
78,980

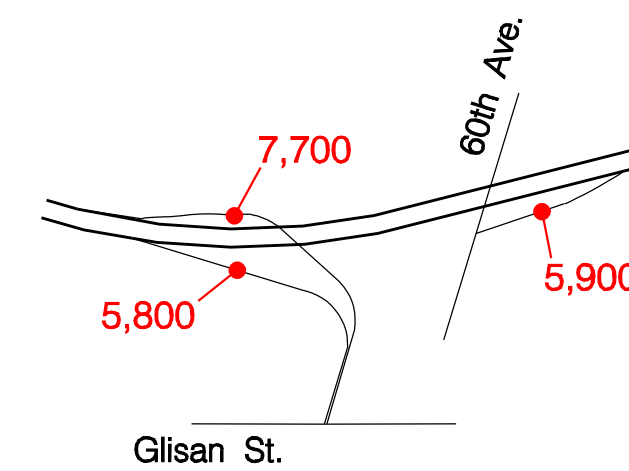
NE 39th Ave. – Exit 2B



26-014
Hoyt ATR
MP 3.35

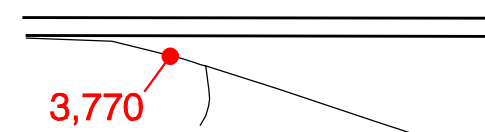
84,750
81,760

NE Glisan St. – Exit 3



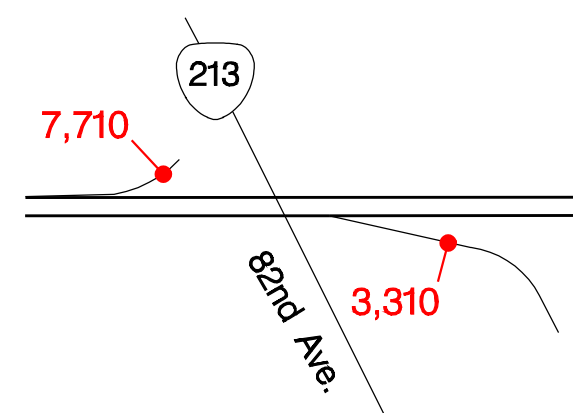
77,050
81,860

NE 68th Ave. – Exit 4



77,050
78,090

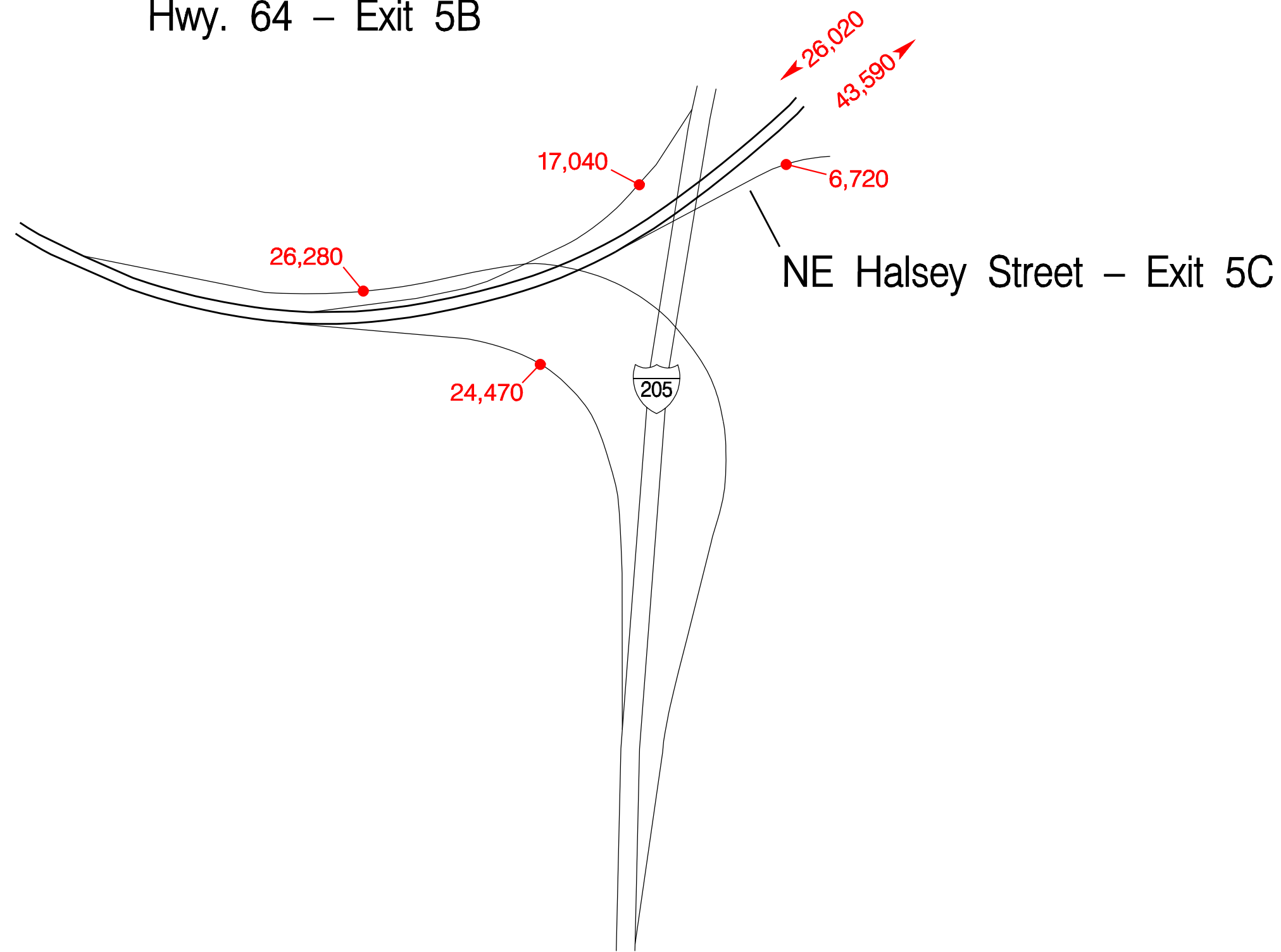
Cascade Hwy. – Exit 5A



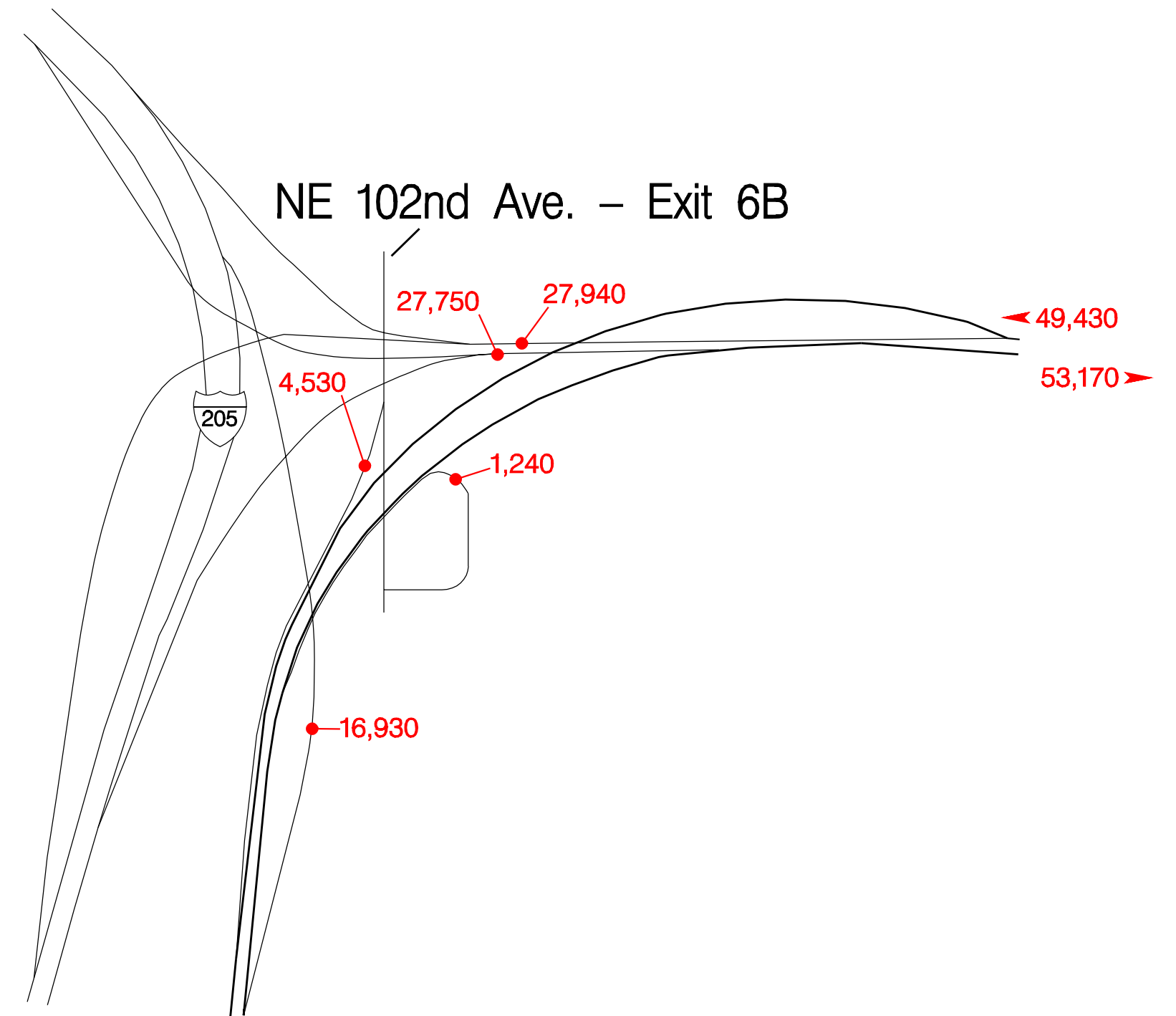
69,340
74,780

INTERSTATE INTERCHANGES AND REST AREAS

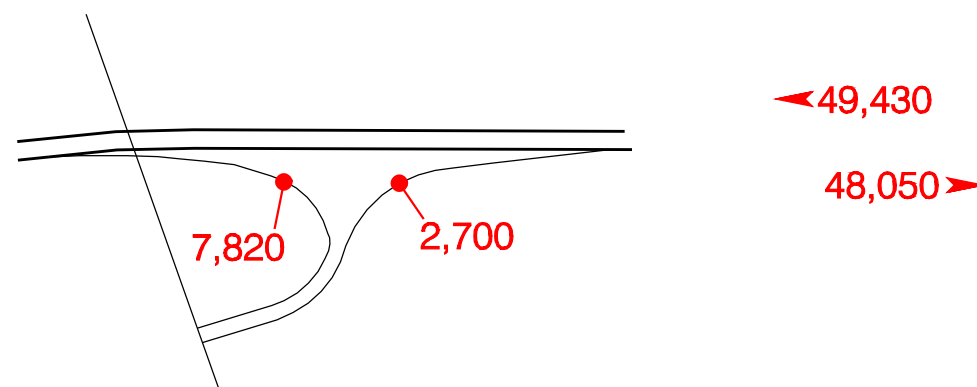
Hwy. 64 – Exit 5B



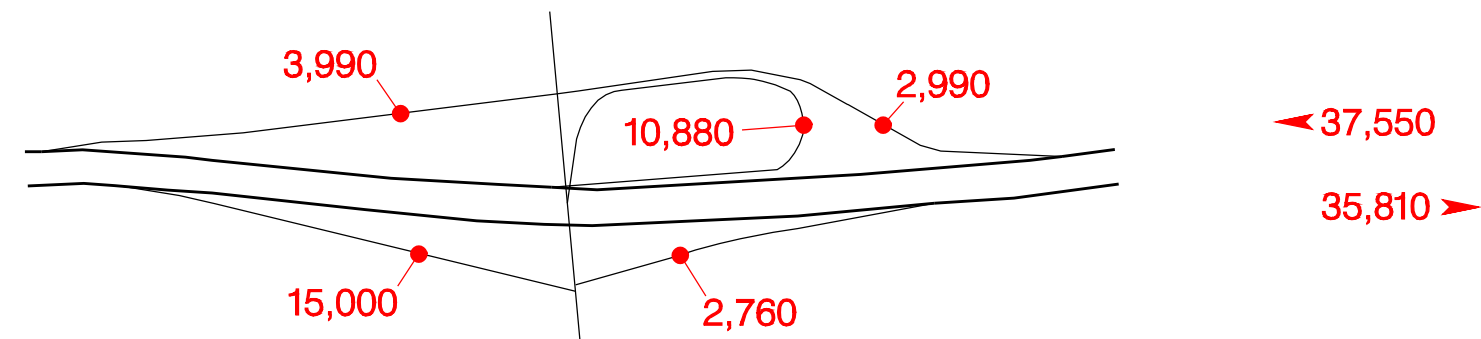
North Banfield – Exit 6A



NE 122nd Ave. – Exit 10

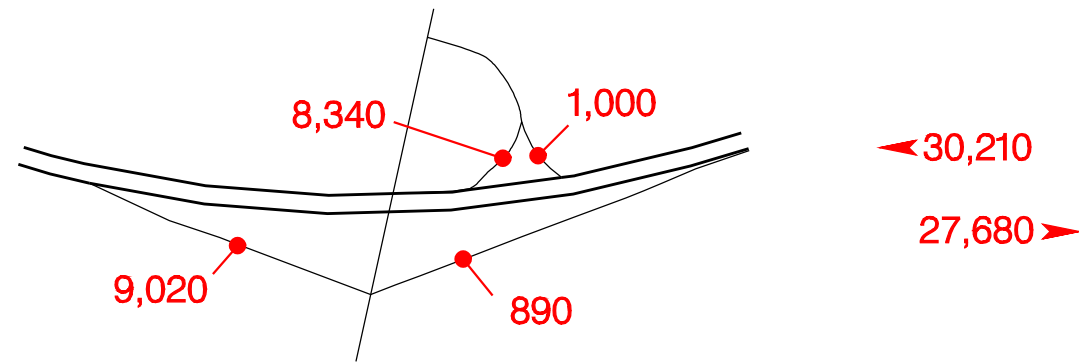


NE 181st Ave. – Exit 13

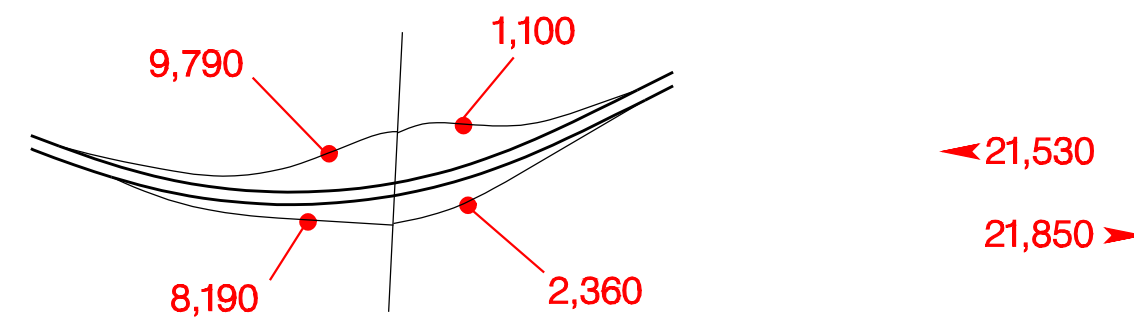


INTERSTATE INTERCHANGES AND REST AREAS

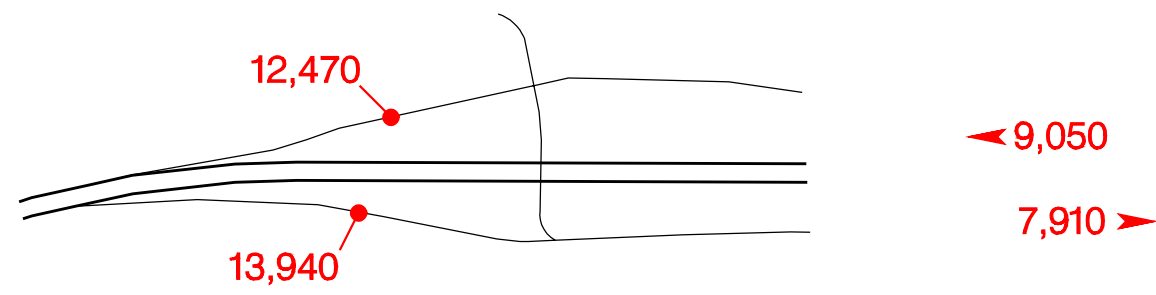
NE 207th Ave. – Exit 14



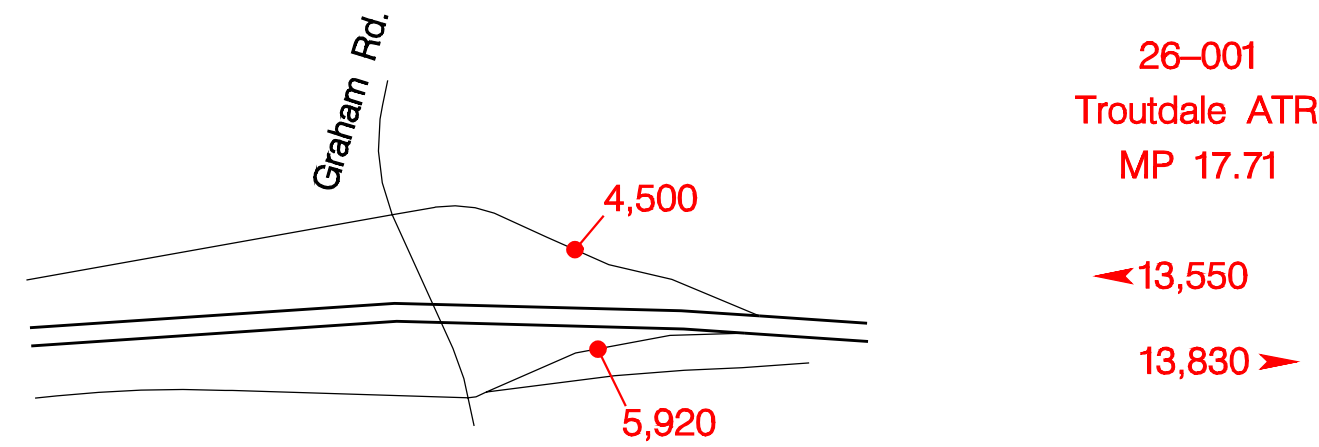
NE 238th Ave. – Exit 16A



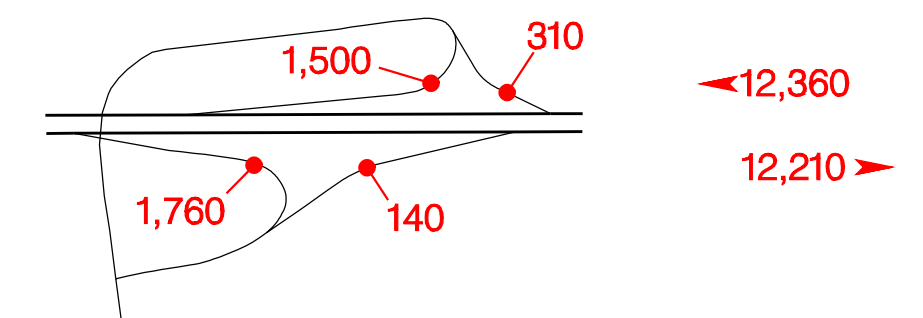
NE Marine Drive – Exit 17



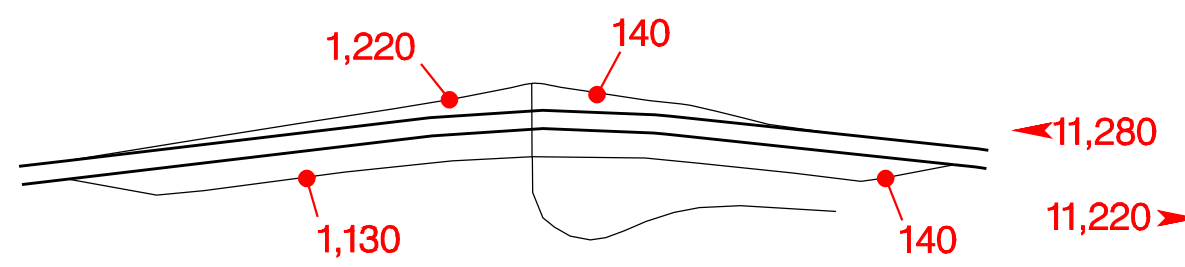
Troutdale – Exit 17



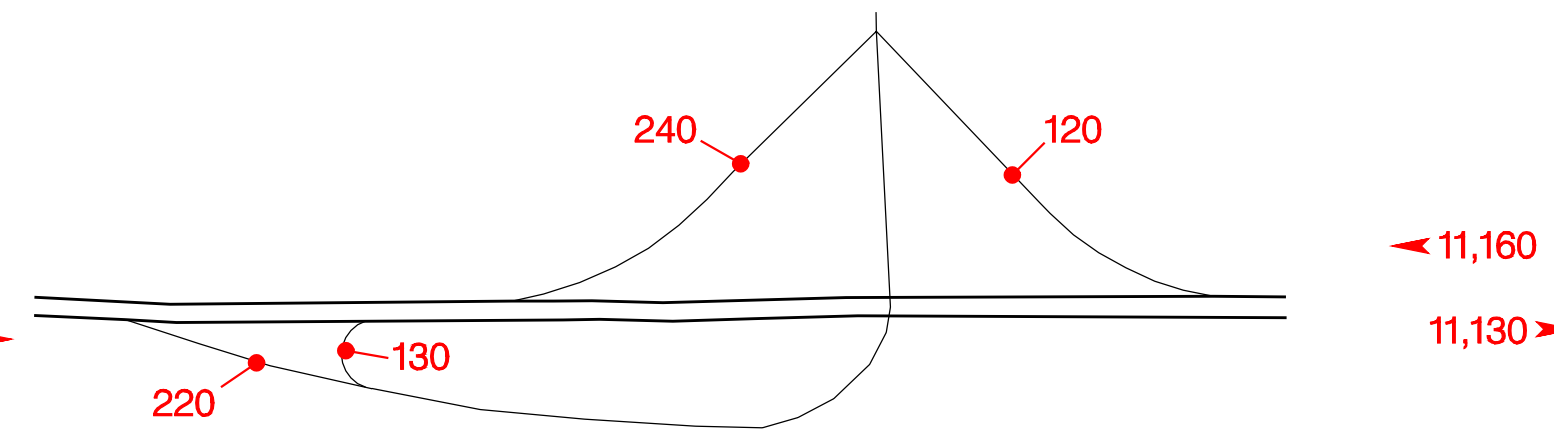
Jordan – Exit 18



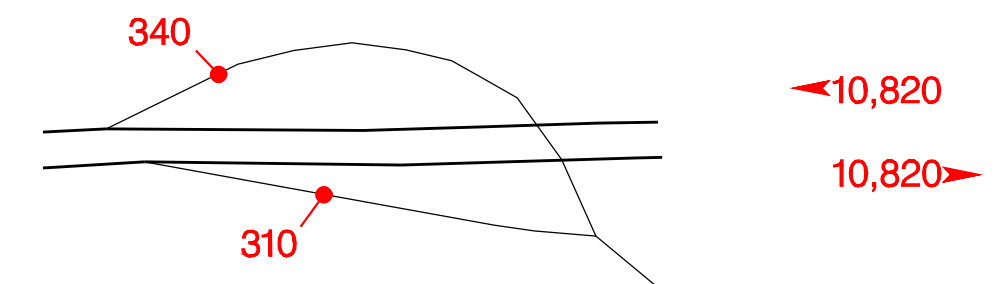
Corbett – Exit 22



Rooster Rock – Exit 24

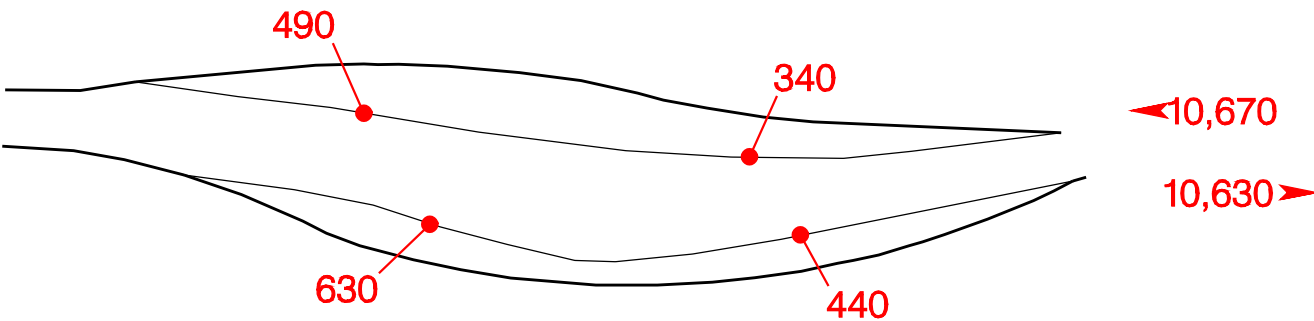


Bridal Veil – Exit 28

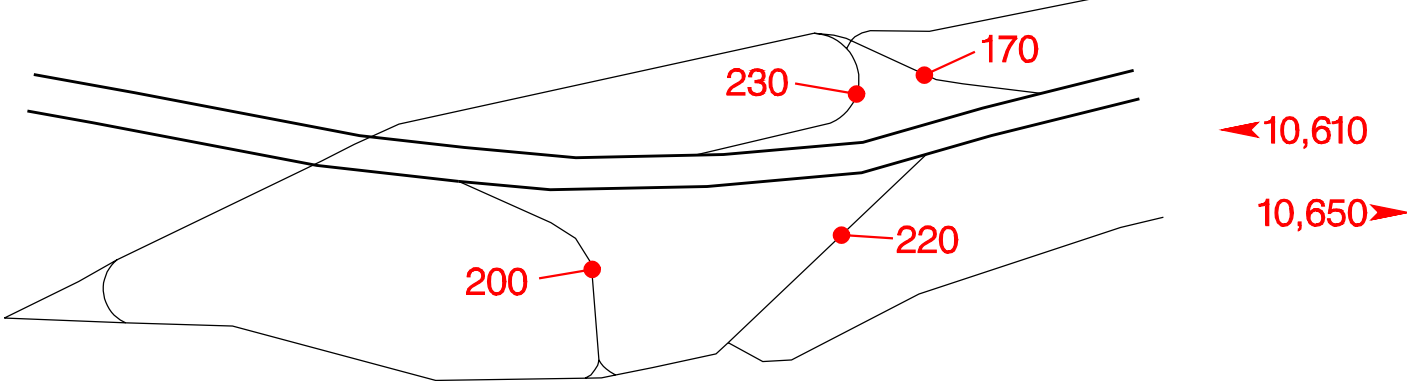


INTERSTATE  INTERCHANGES AND REST AREAS

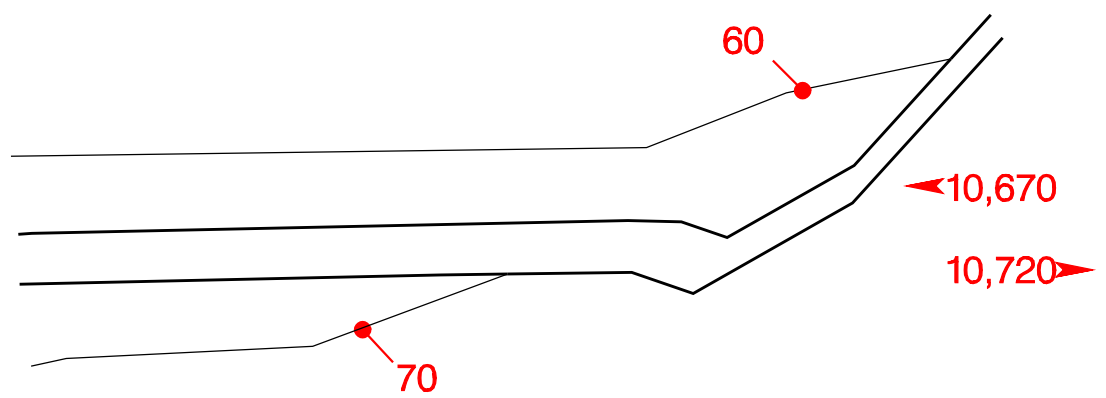
Multnomah Falls – Exit 31



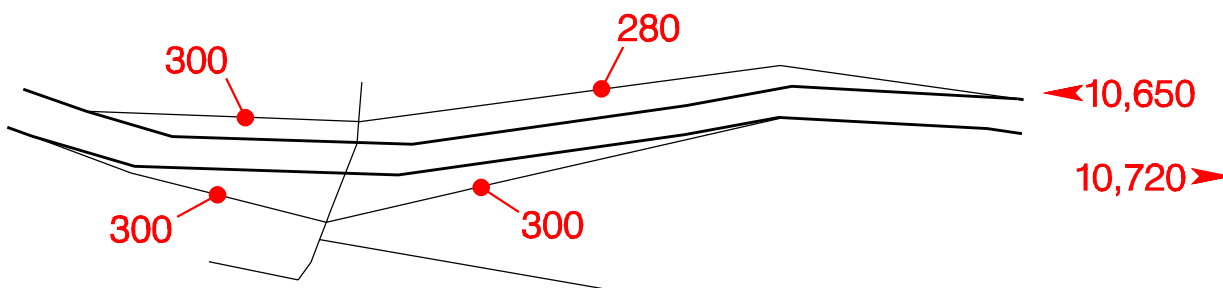
Historic Col. River Hwy. – Exit 35A



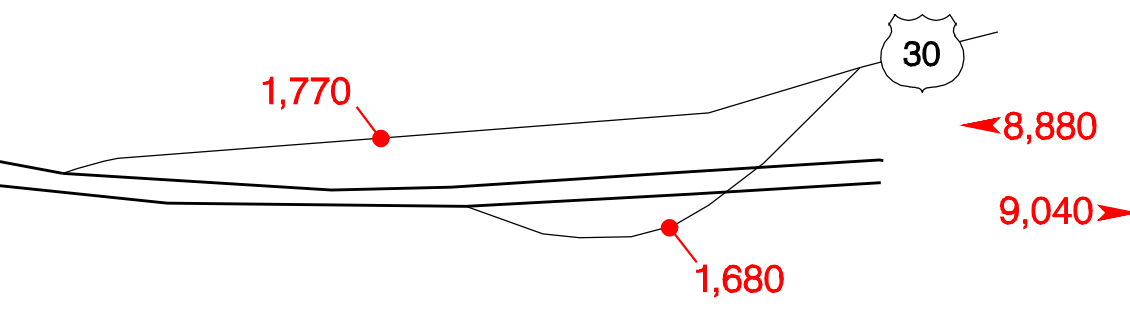
Warrendale O'King – Exit 37



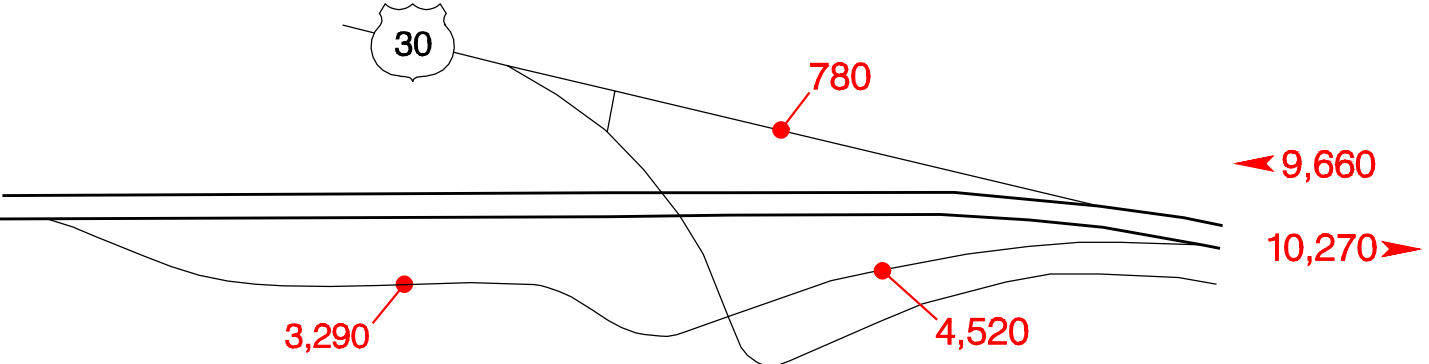
Bonneville Dam – Exit 40



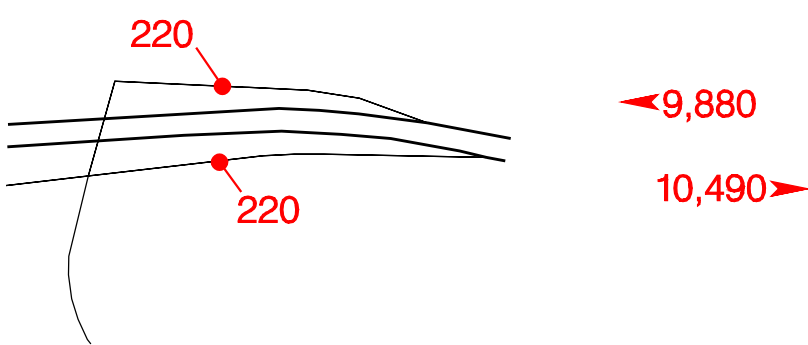
West Cascade Locks – Exit 43



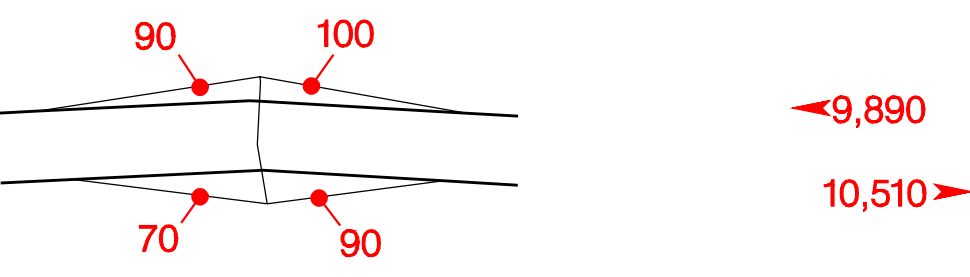
East Cascade Locks – Exit 45



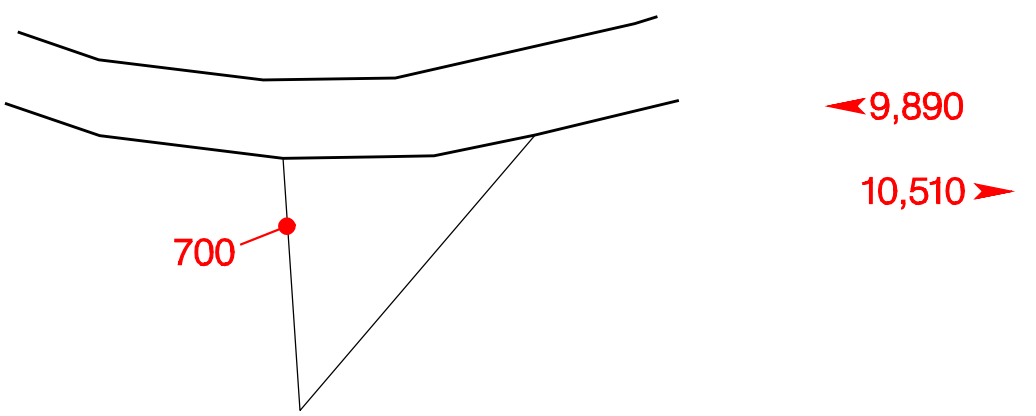
Herman Creek – Exit 47



Wyeth – Exit 50

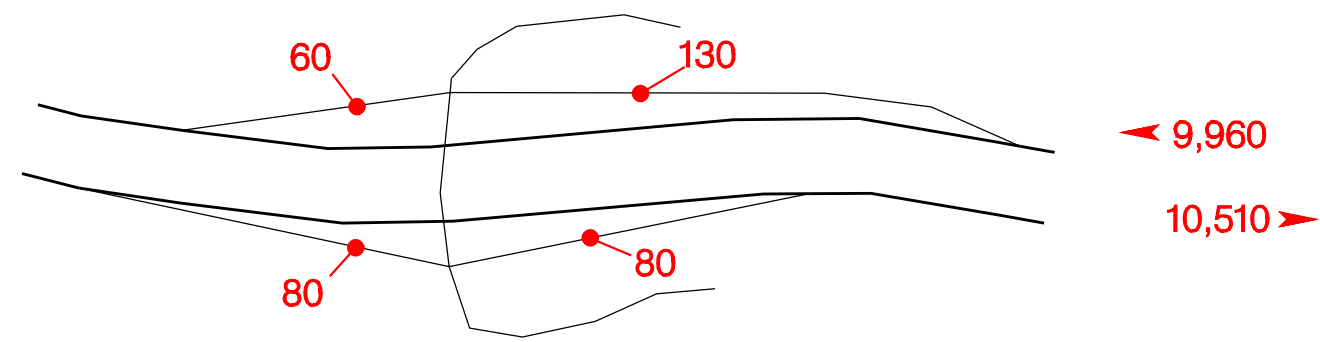


Starvation Creek State Park – Exit 54

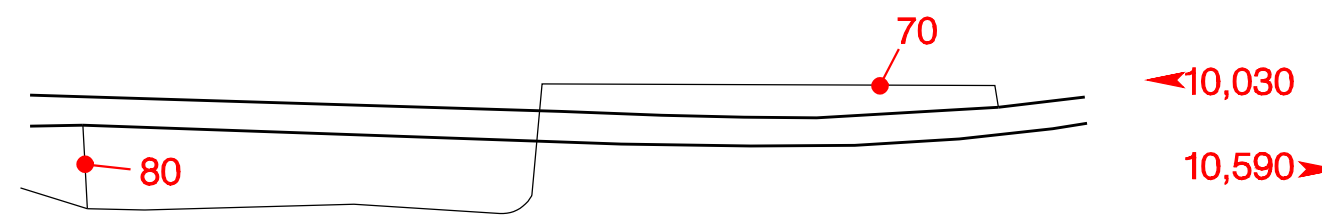


INTERSTATE 84 INTERCHANGES AND REST AREAS

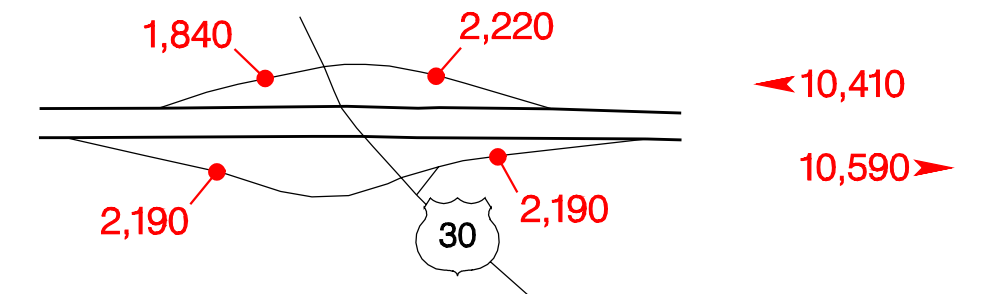
Viento State Park – Exit 56



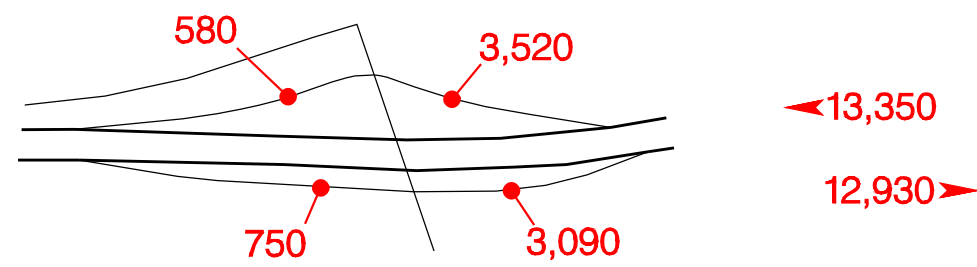
Mitchell Point – Exit 58



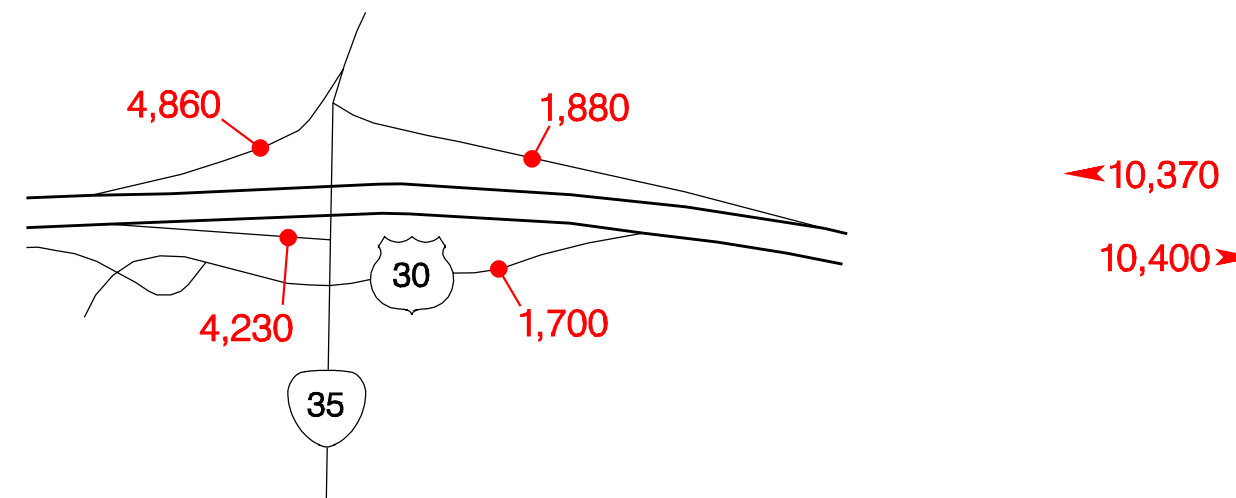
West Hood River – Exit 62



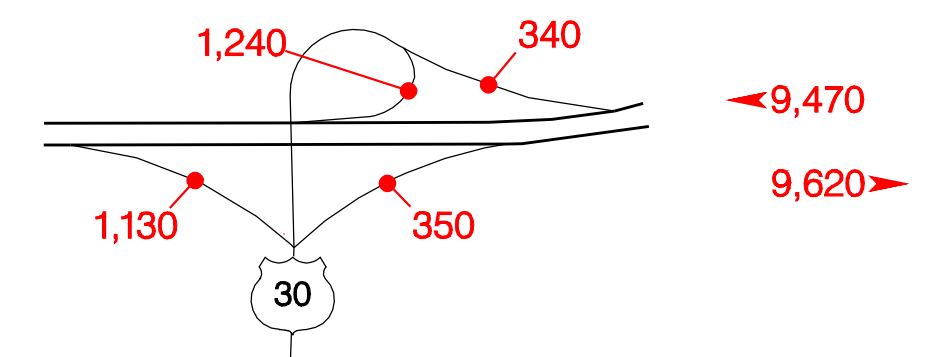
2nd Street – Exit 63



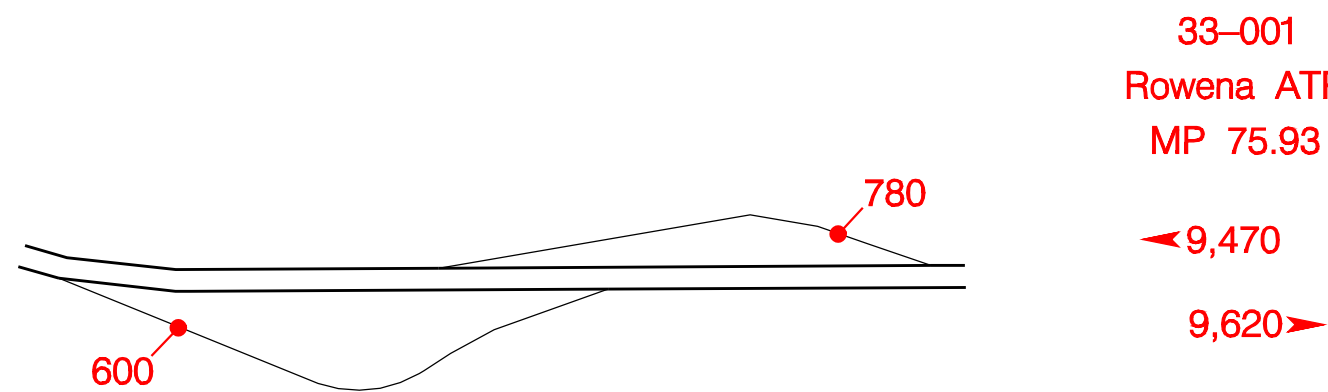
East Hood River – Exit 64



Mosier – Exit 69

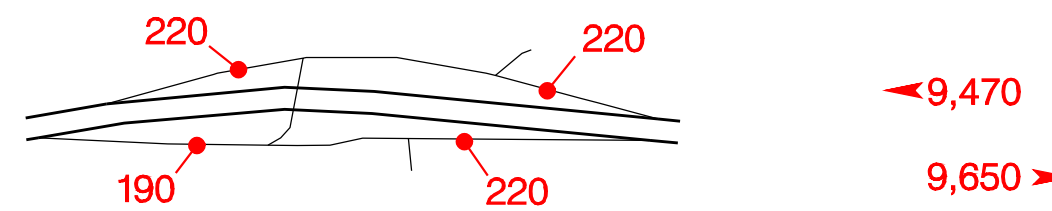


Memaloose Rest Area – Exit 72, 73

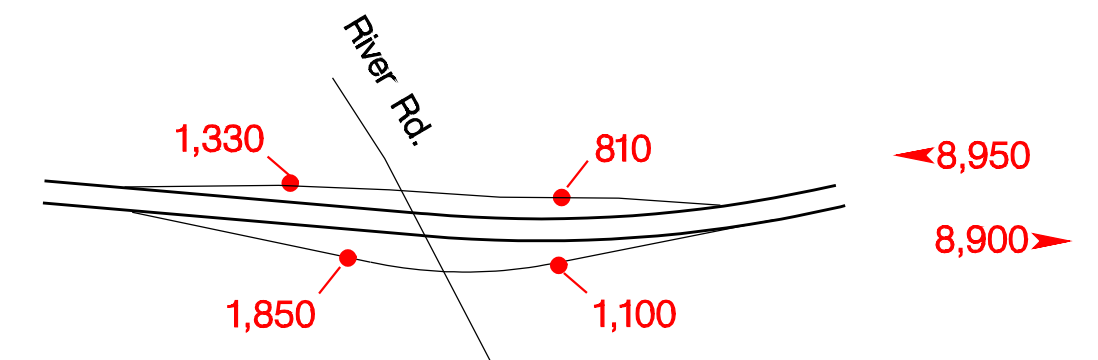


33-001
Rowena ATR
MP 75.93

Rowena – Exit 76

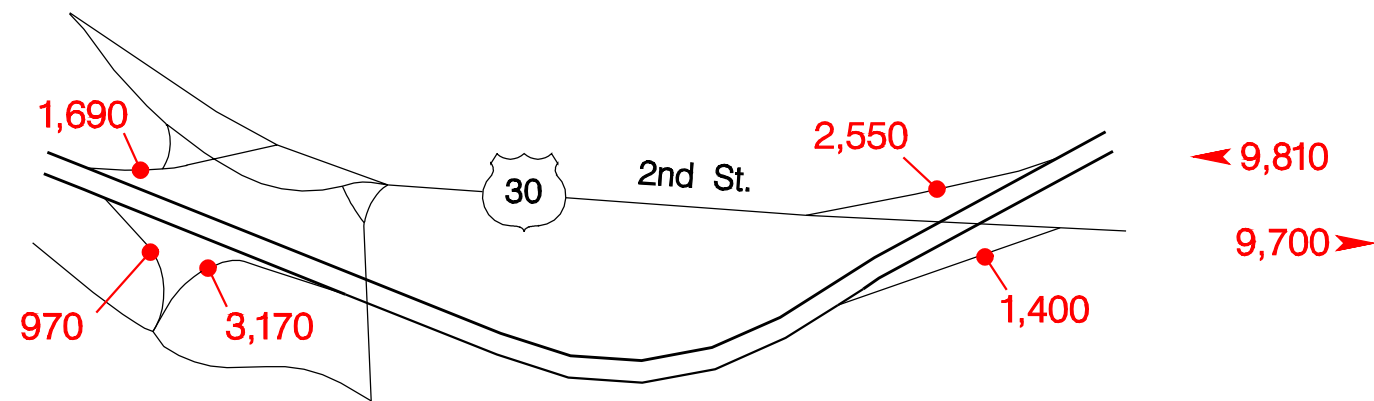


Chenowith – Exit 82

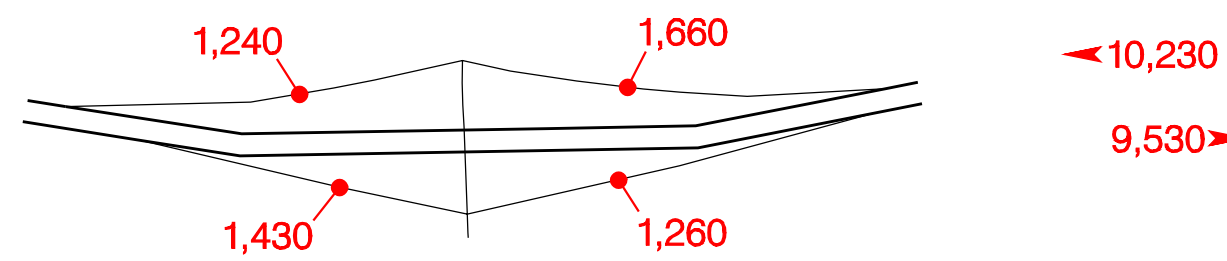


INTERSTATE 84 INTERCHANGES AND REST AREAS

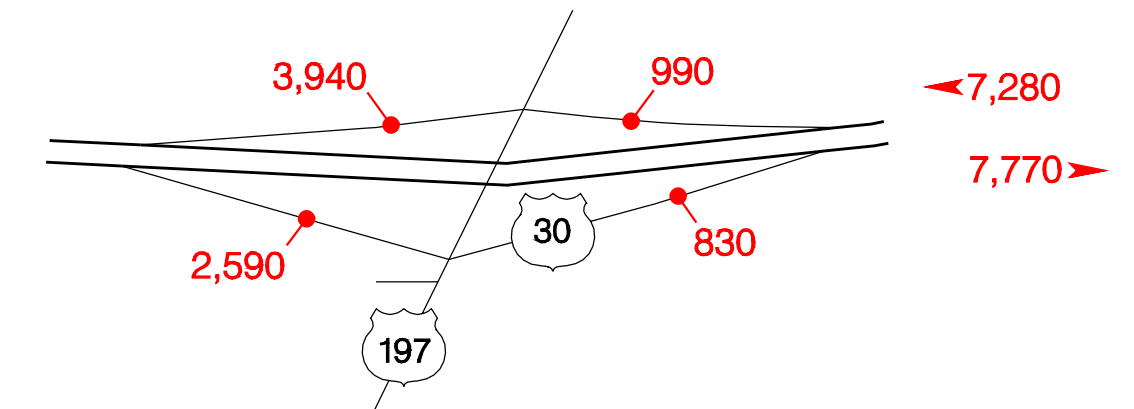
West The Dalles – Exit 83



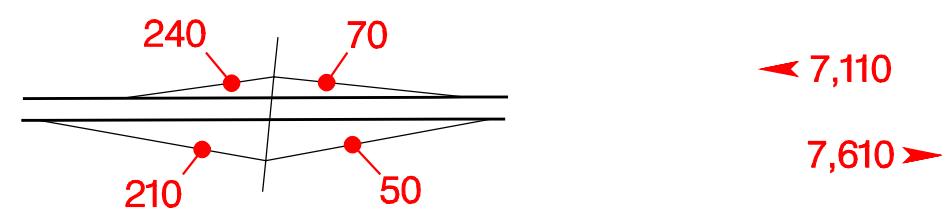
Brewery Grade – Exit 85



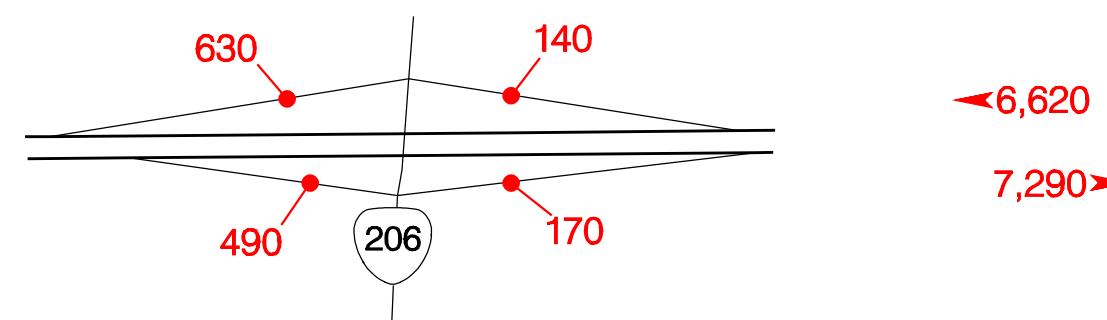
The Dalles Bridge – Exit 87



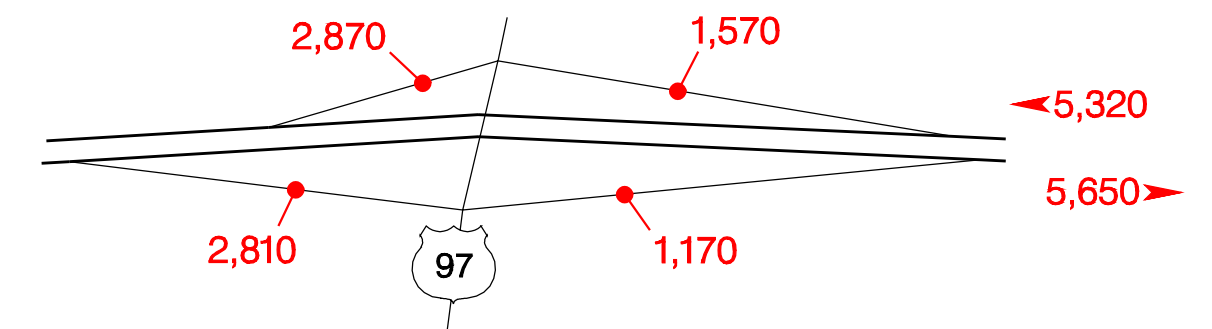
The Dalles Dam – Exit 88



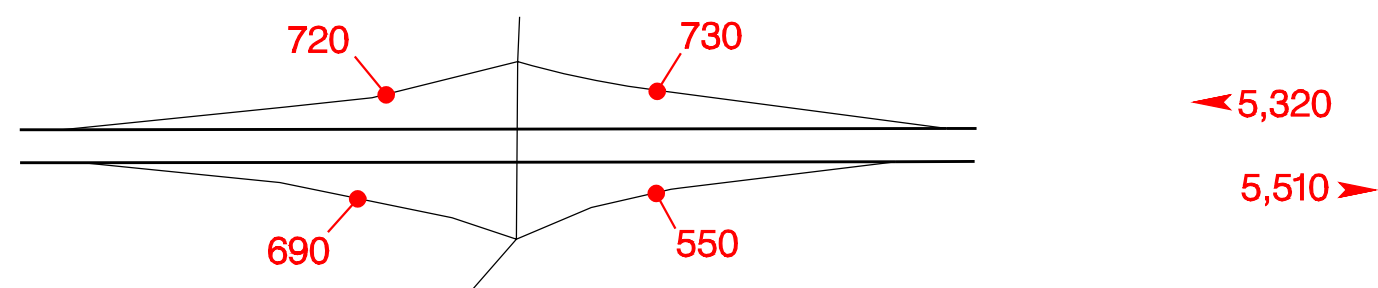
Celilo–Wasco Hwy. – Exit 97



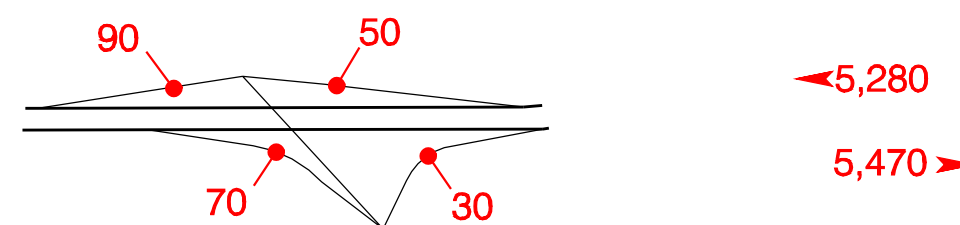
Biggs Jct. – Exit 104



Rufus – Exit 109

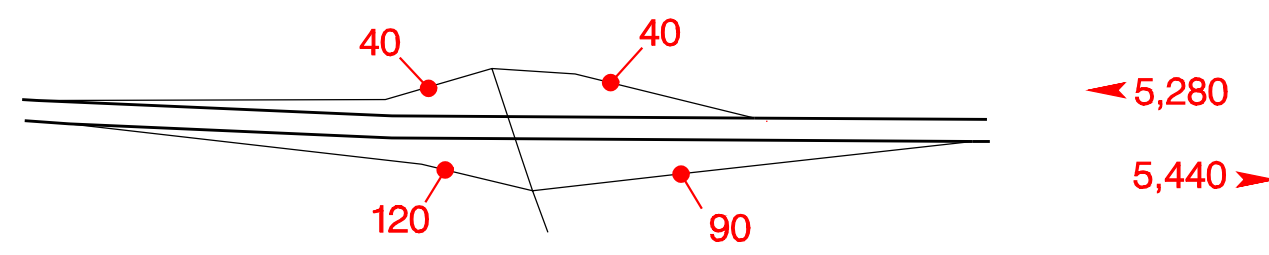


West John Day – Exit 114

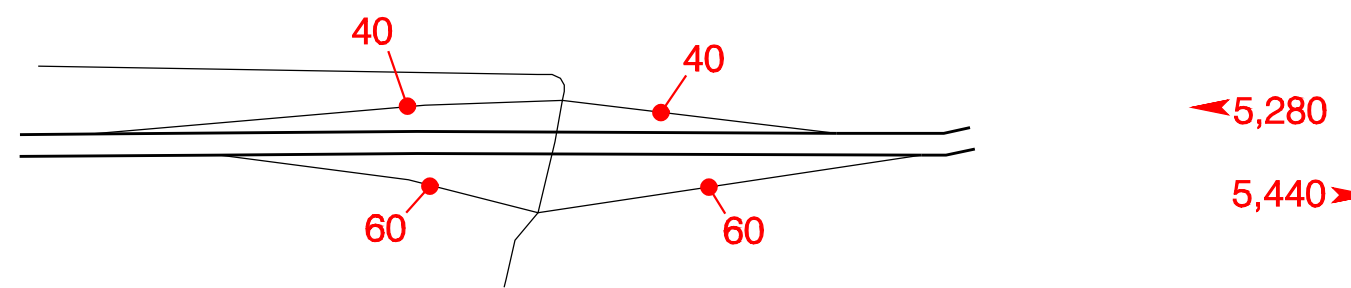


INTERSTATE  INTERCHANGES AND REST AREAS

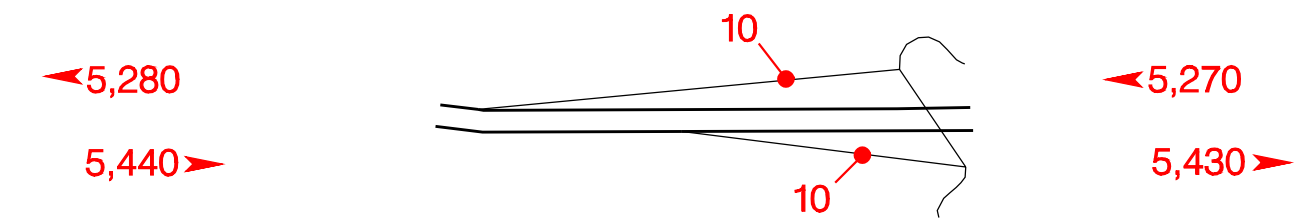
Quinton – Exit 123



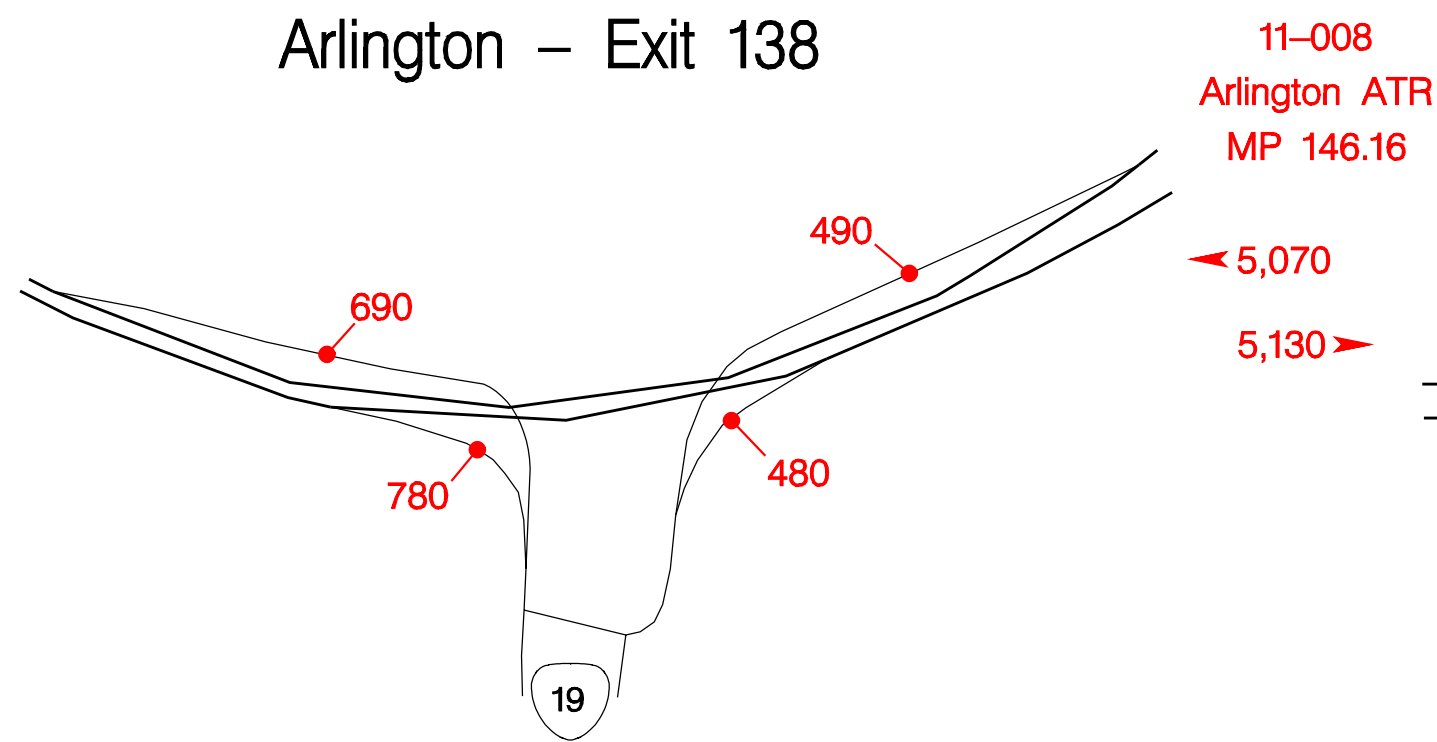
Blalock – Exit 129



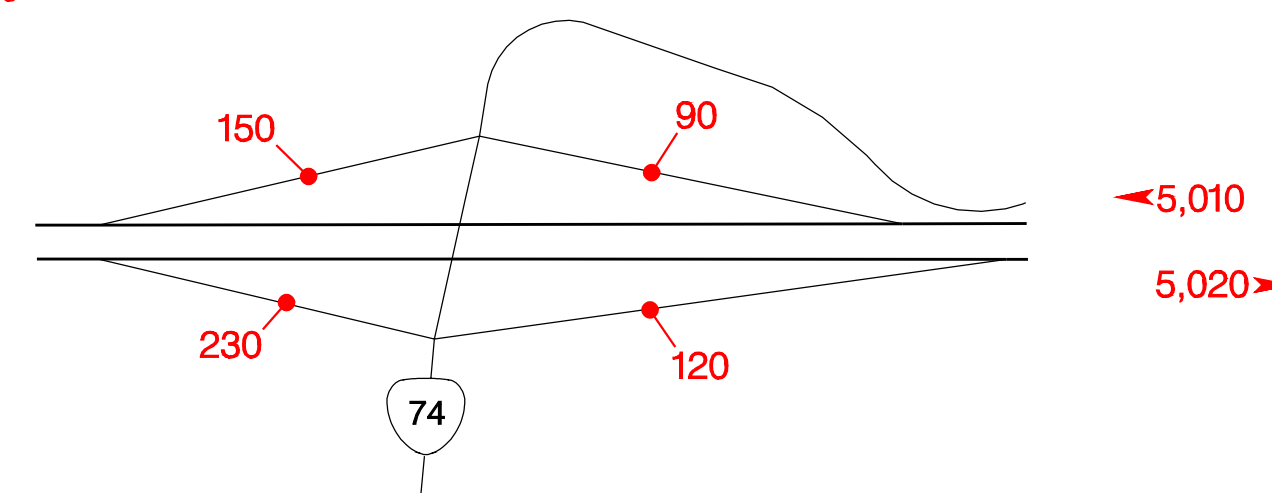
Woelpern – Exit 131



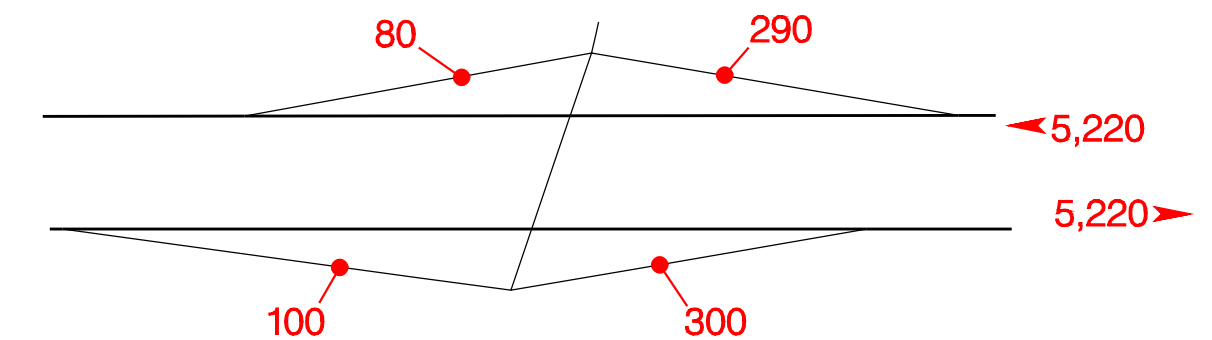
Arlington – Exit 138



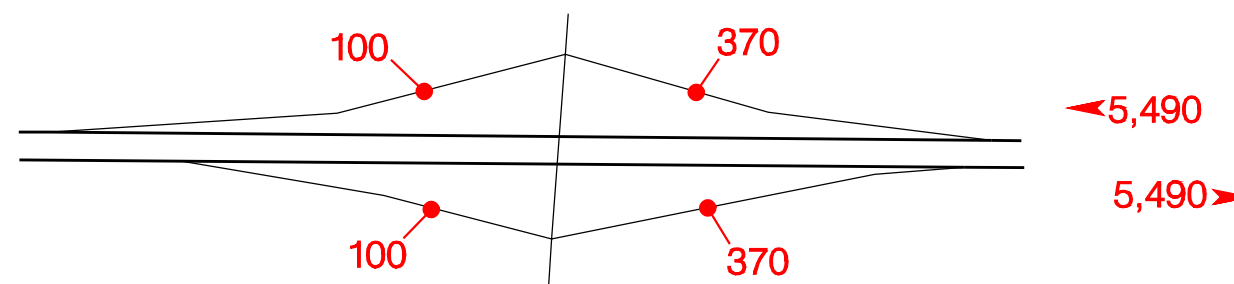
Heppner Jct. – Exit 147



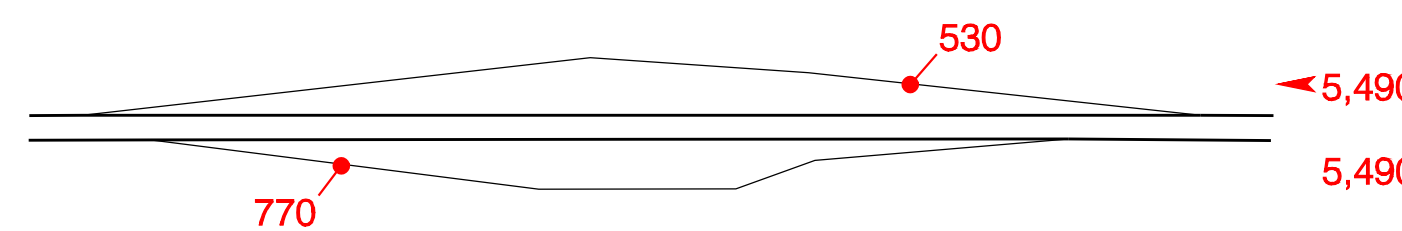
Threemile Canyon – Exit 151



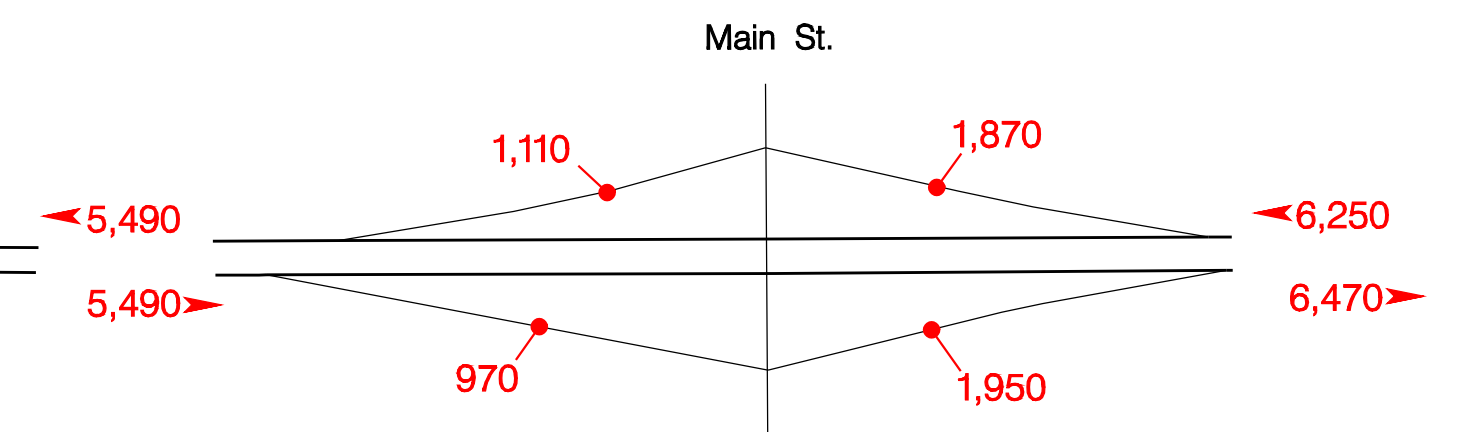
Tower Road – Exit 159



Boardman Rest Area – Exit 160

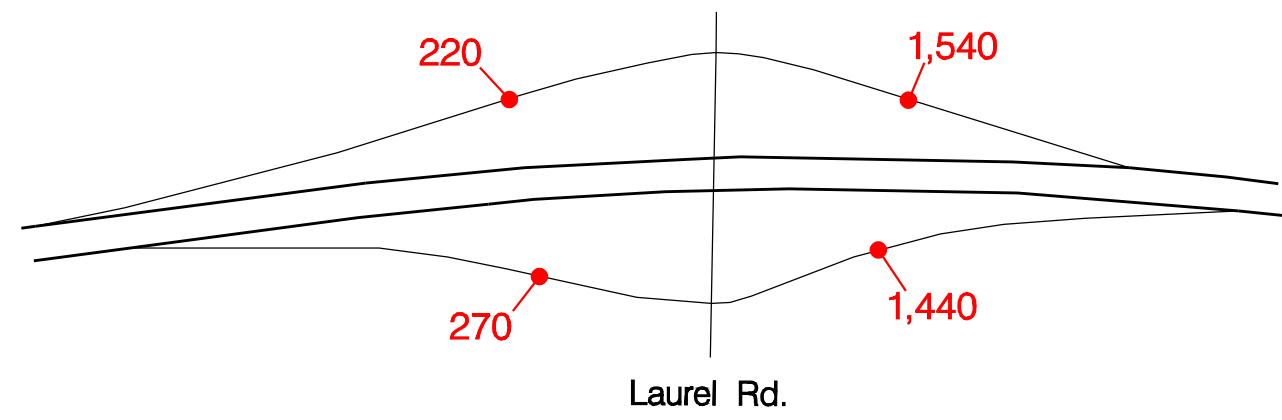


Boardman – Exit 164

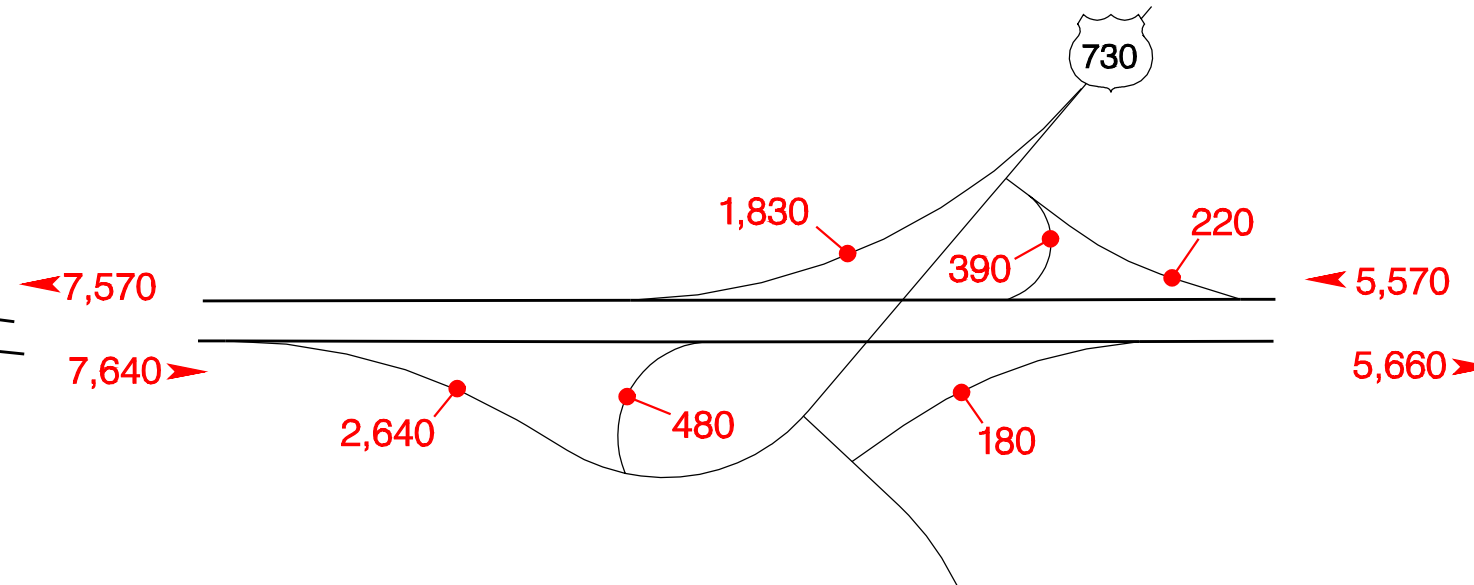


INTERSTATE 84 INTERCHANGES AND REST AREAS

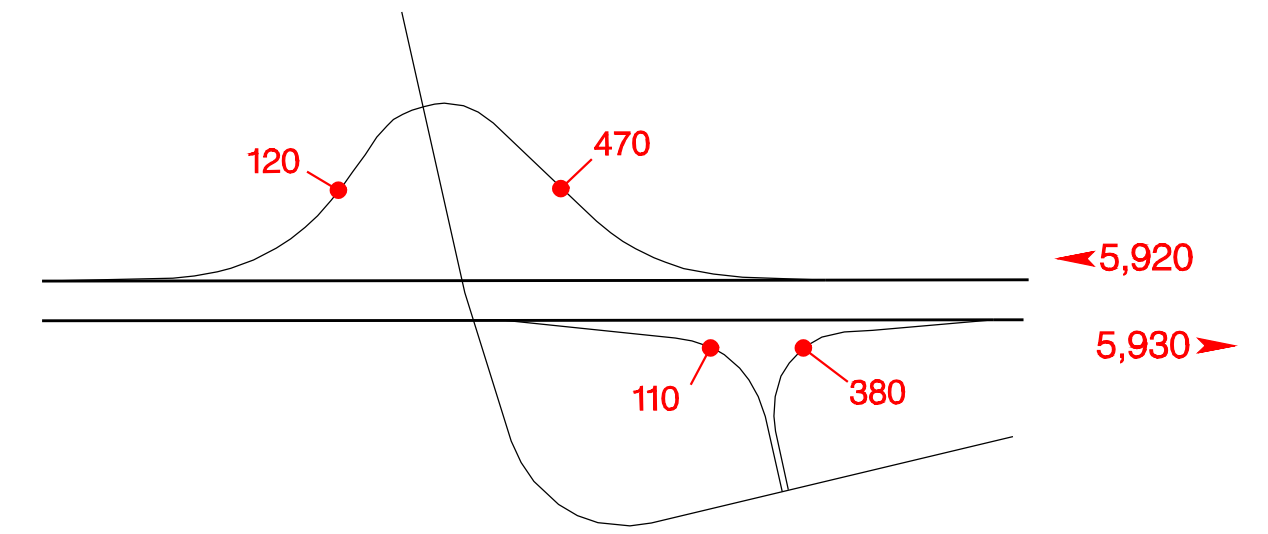
Port Of Morrow – Exit 165



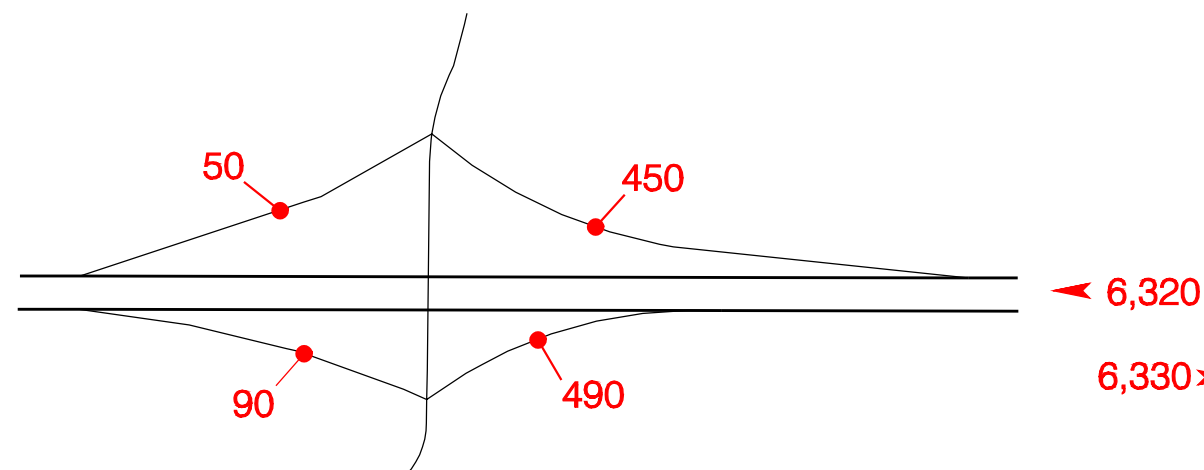
Boardman Jct. – Exit 168



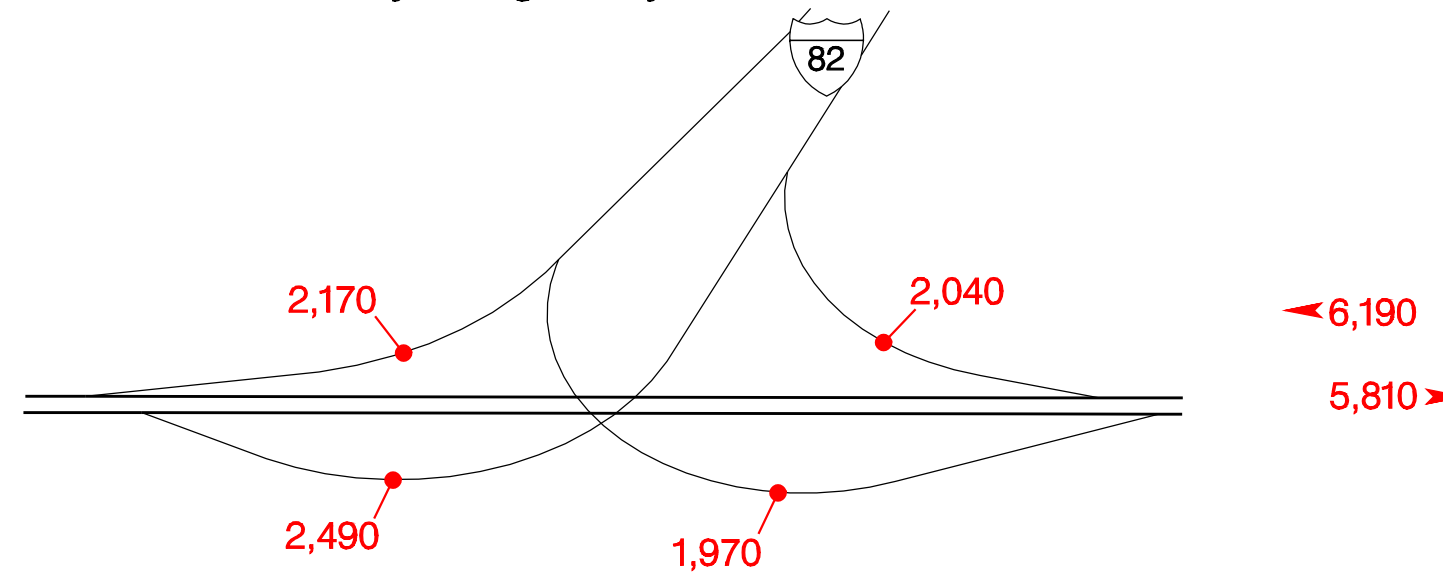
Paterson Ferry Road – Exit 171



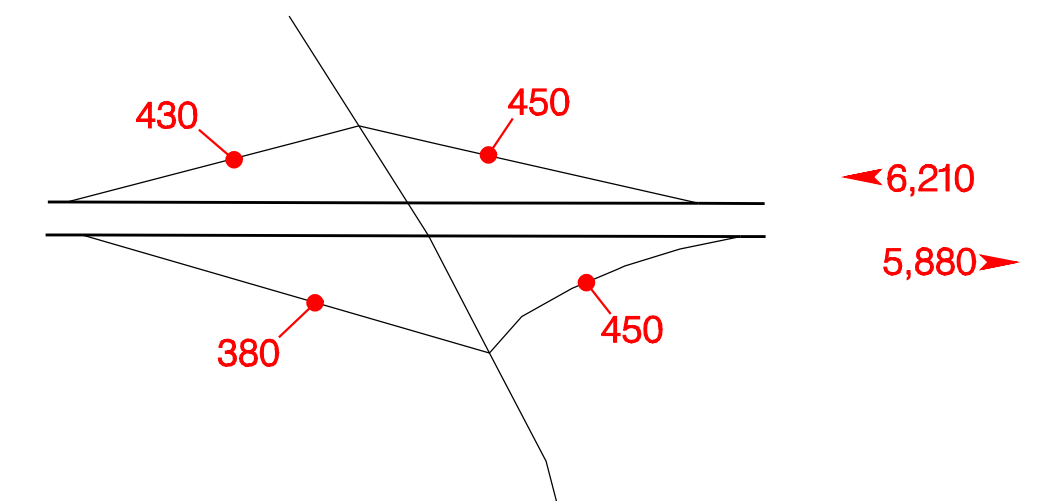
Ordnance – Exit 177



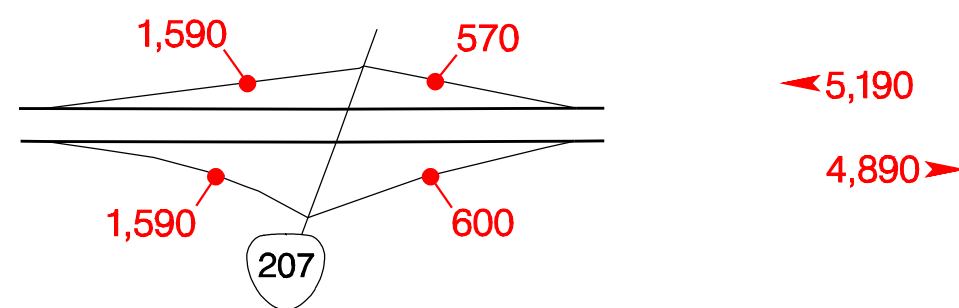
McNary Highway – Exit 179



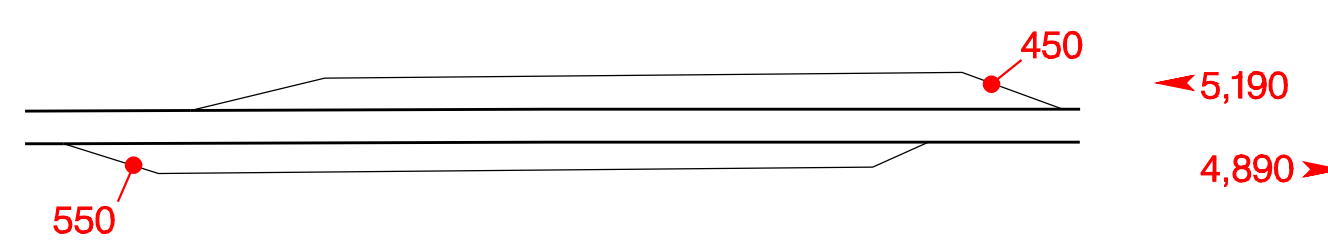
Westland Road – Exit 180



Hermiston – Exit 182

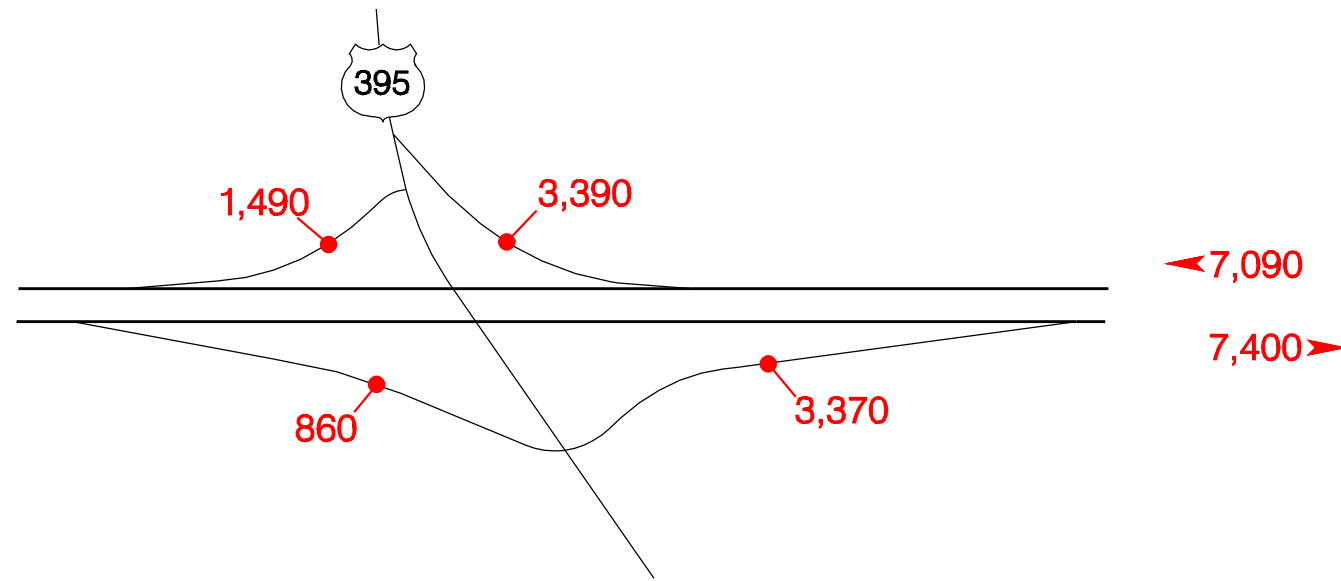


Stanfield Rest Area – Exit 186A, 186B

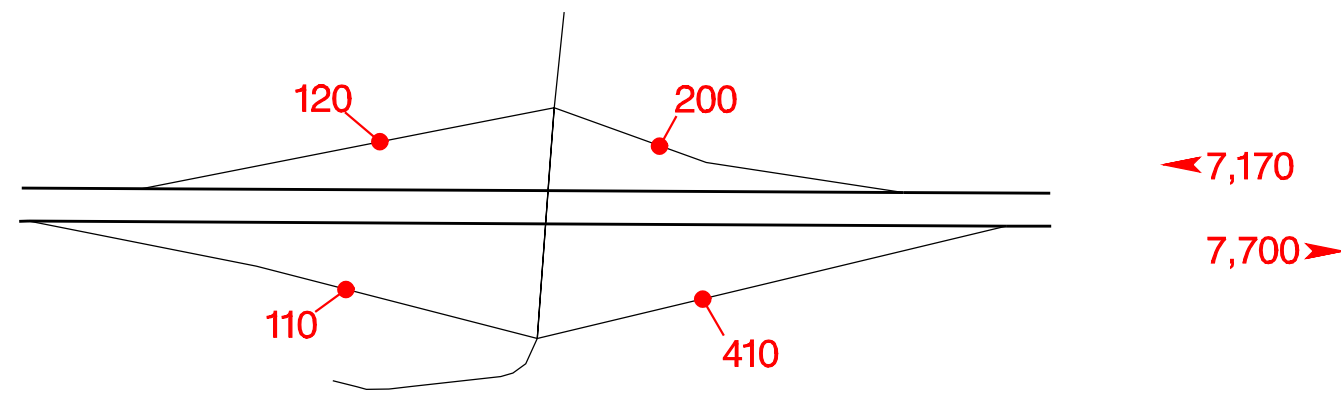


INTERSTATE INTERCHANGES AND REST AREAS

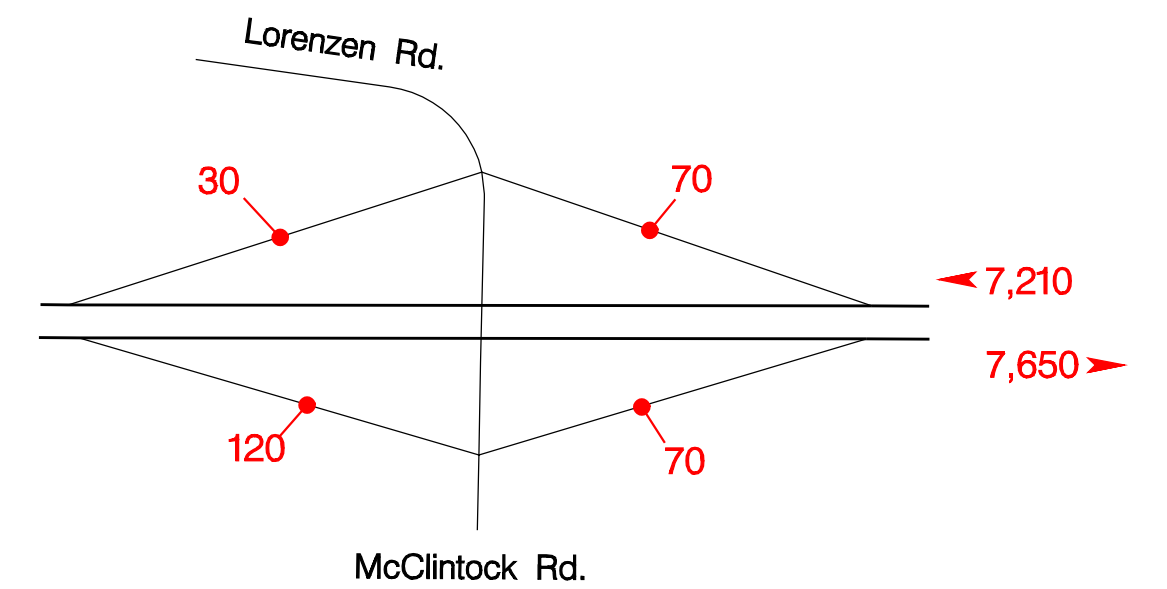
Stanfield Jct. – Exit 188



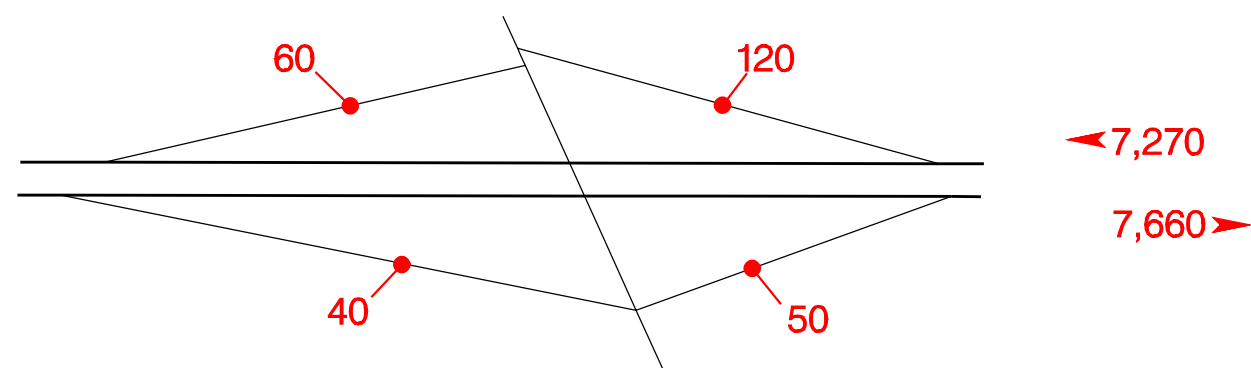
Echo Jct. – Exit 193



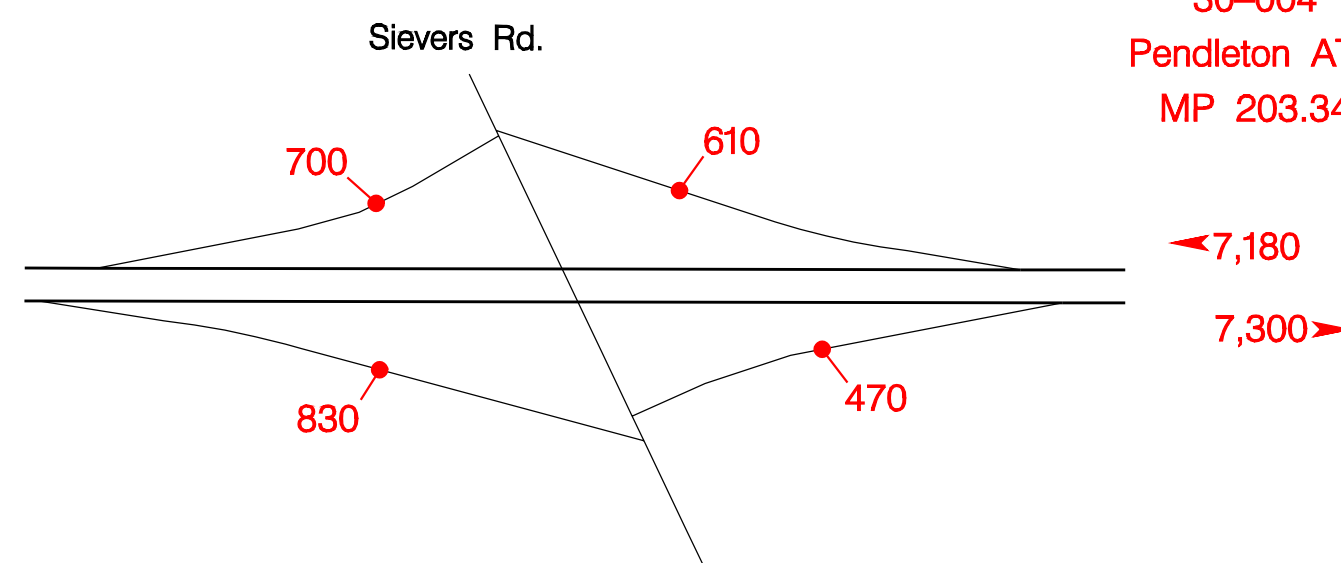
Rew Elevator – Exit 198



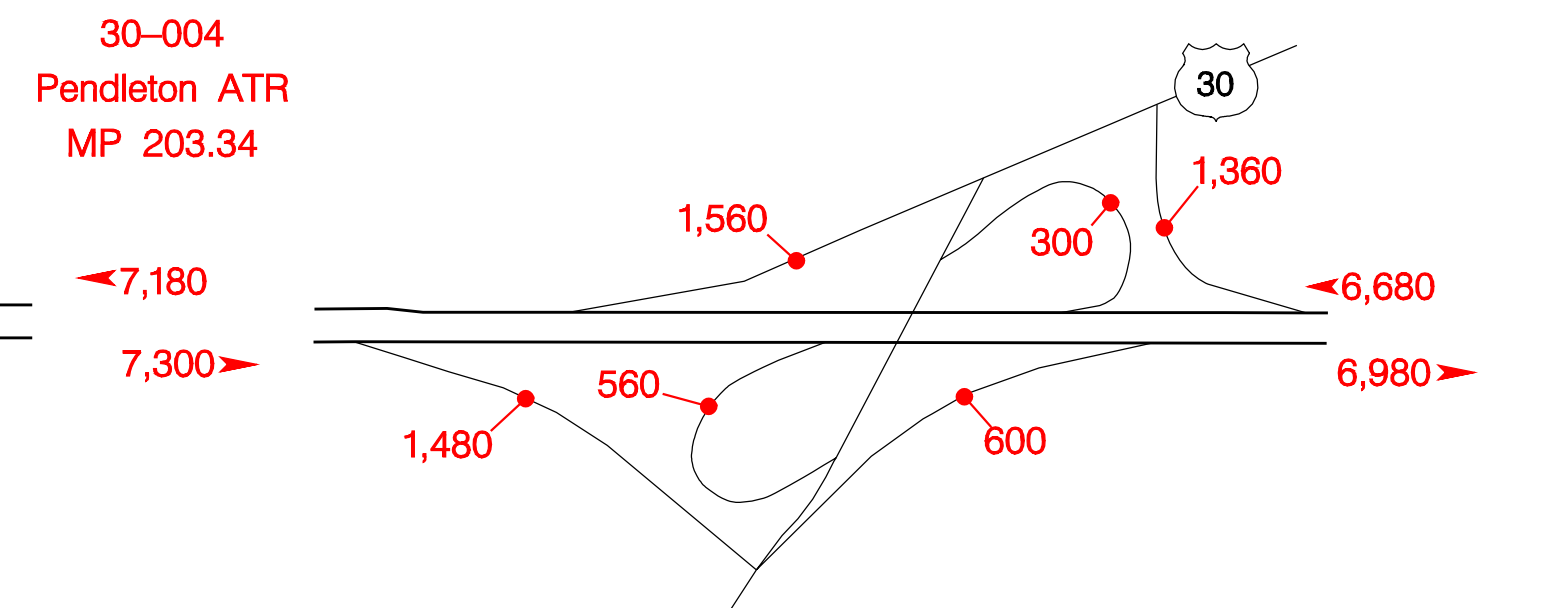
Yoakum Road – Exit 199



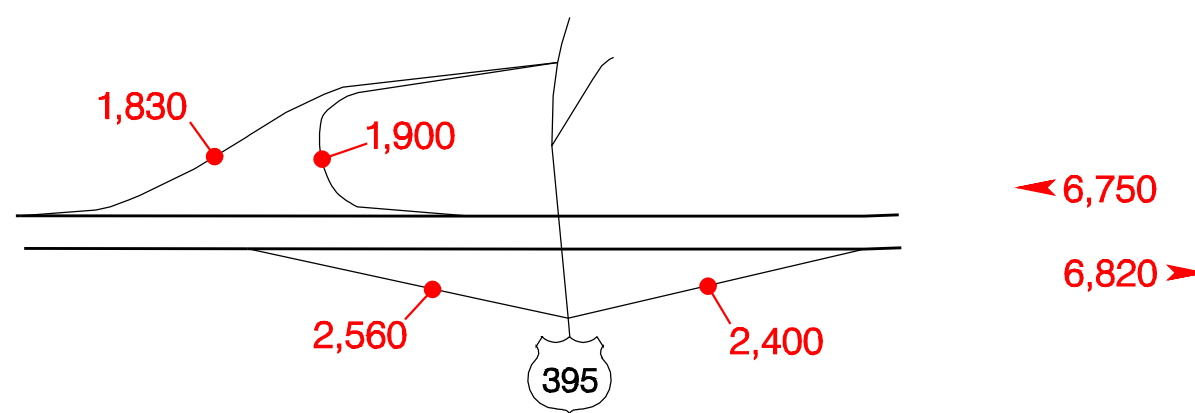
Barnhart – Exit 202



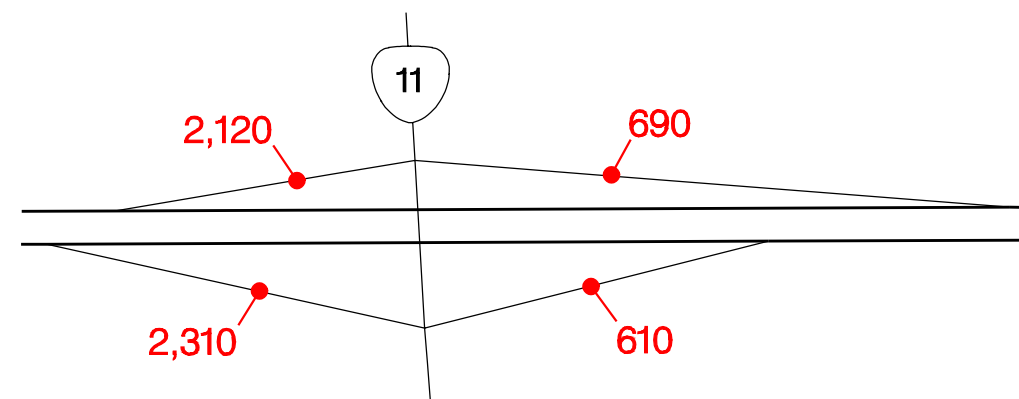
West Pendleton – Exit 207



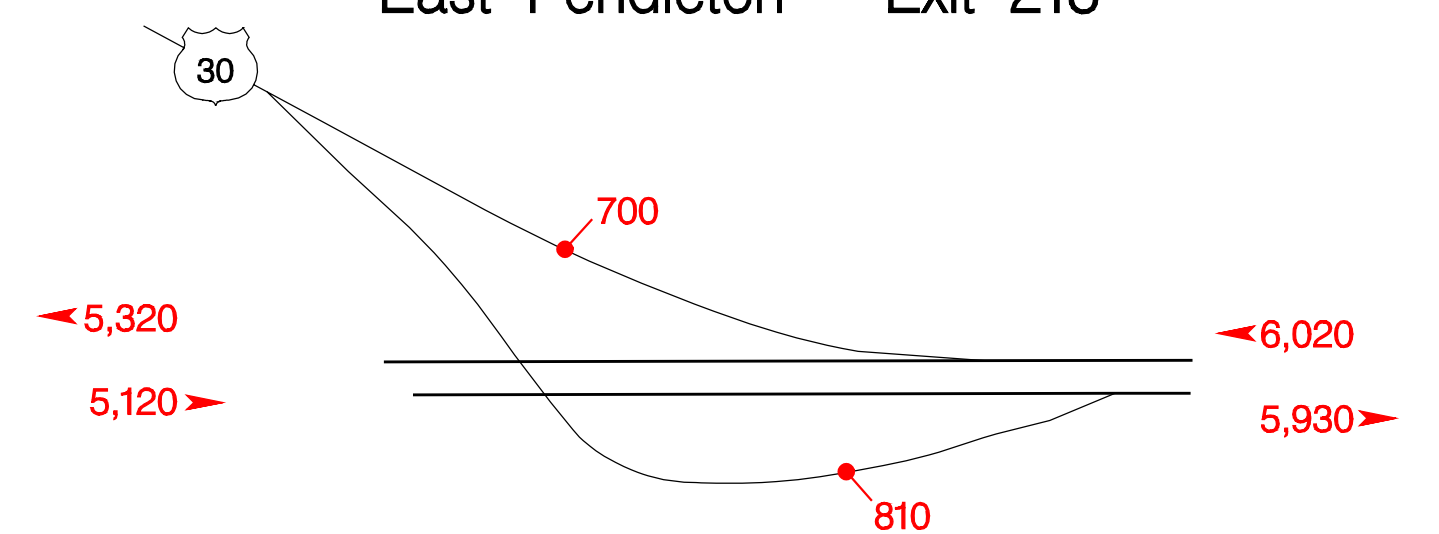
Emigrant Avenue – Exit 209



South Pendleton – Exit 211

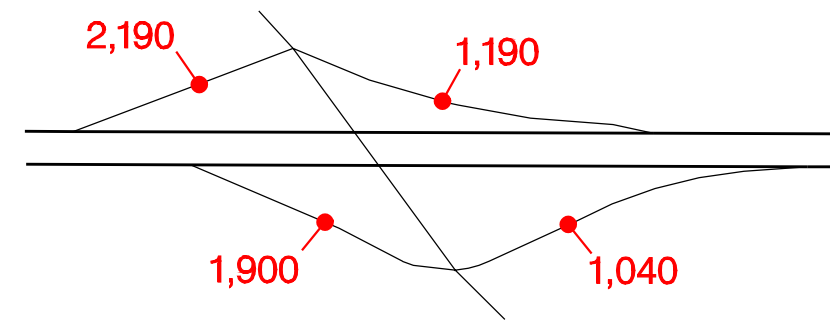


East Pendleton – Exit 213

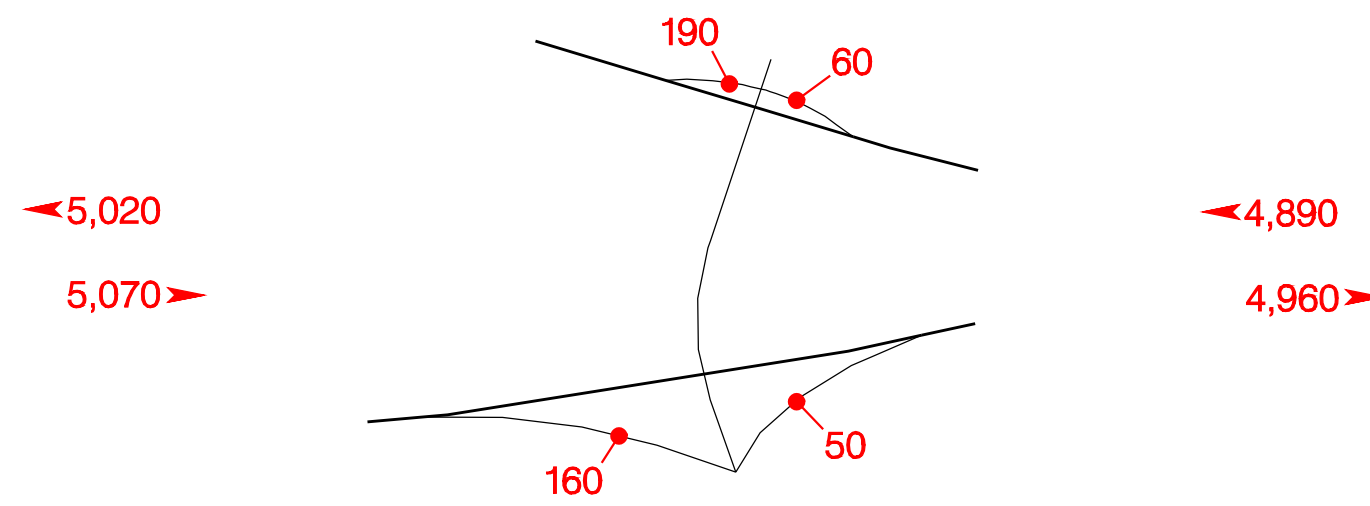


INTERSTATE  INTERCHANGES AND REST AREAS

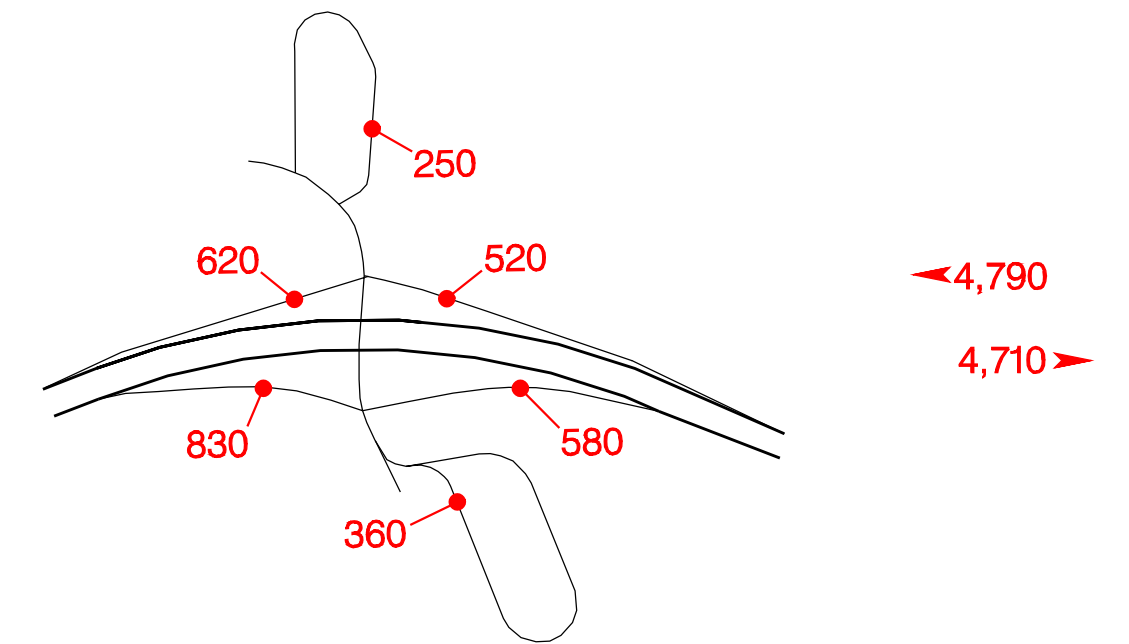
Mission Jct. – Exit 215



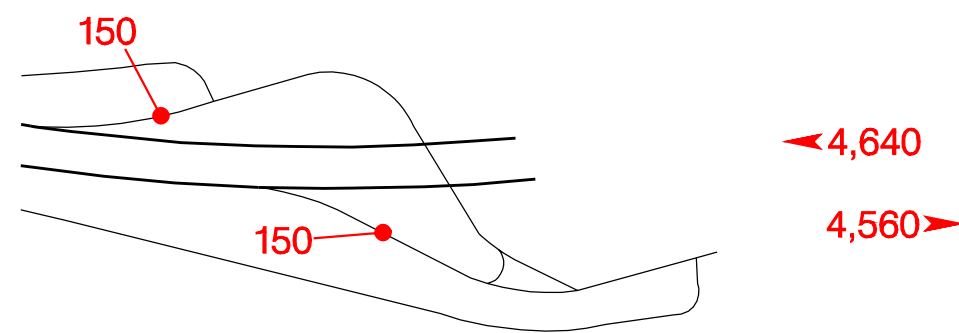
Emigrant Hill – Exit 224



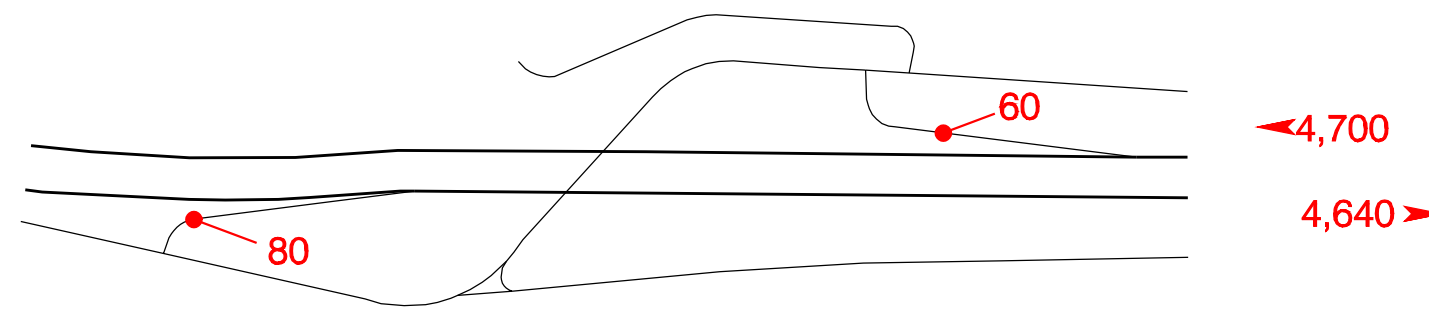
Deadman's Pass – Exit 228



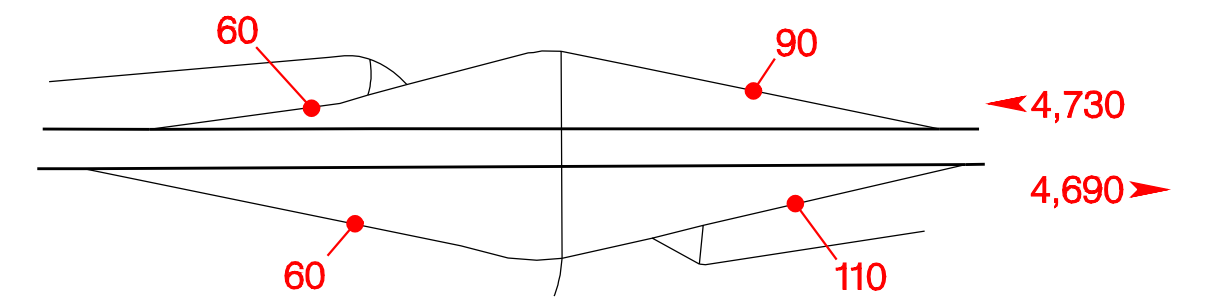
West Emigrant Park – Exit 233



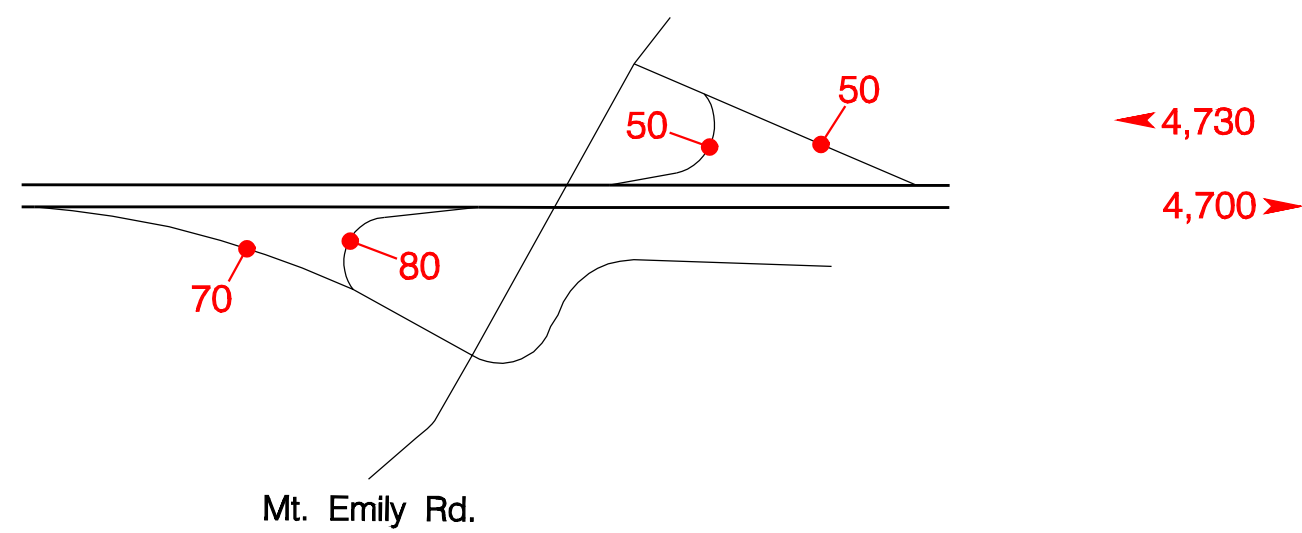
East Emigrant Park – Exit 235



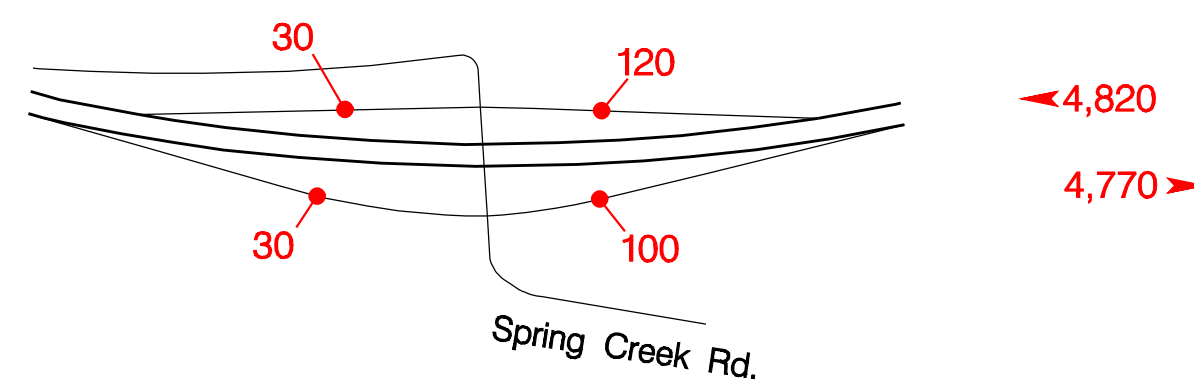
Meacham – Exit 238



Kamela – Exit 243

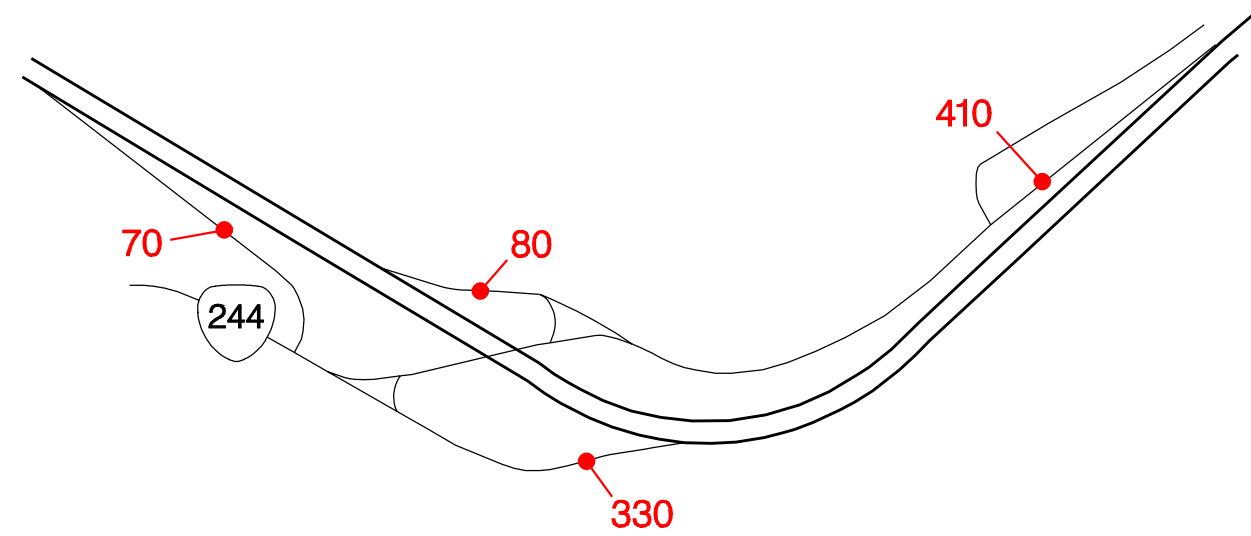


Glover – Exit 248

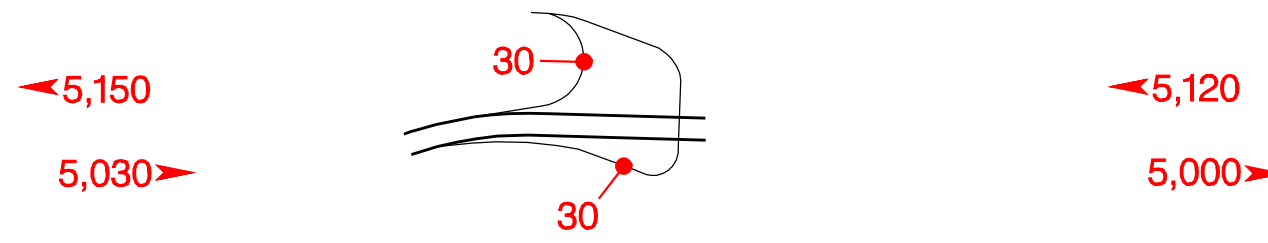


INTERSTATE INTERCHANGES AND REST AREAS

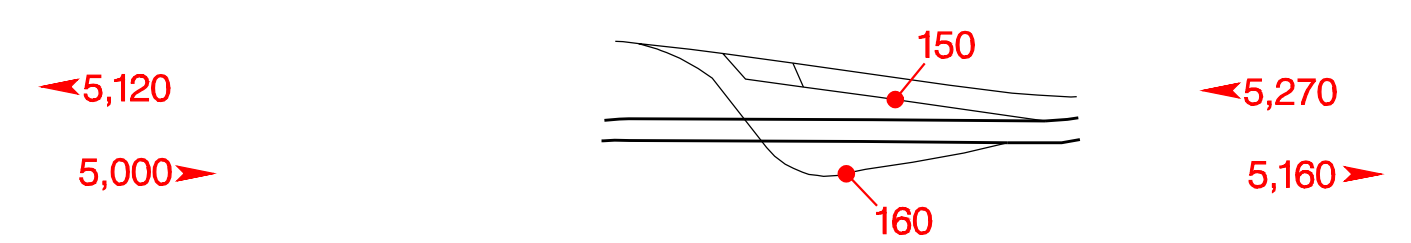
Ukiah–Hilgard – Exit 252



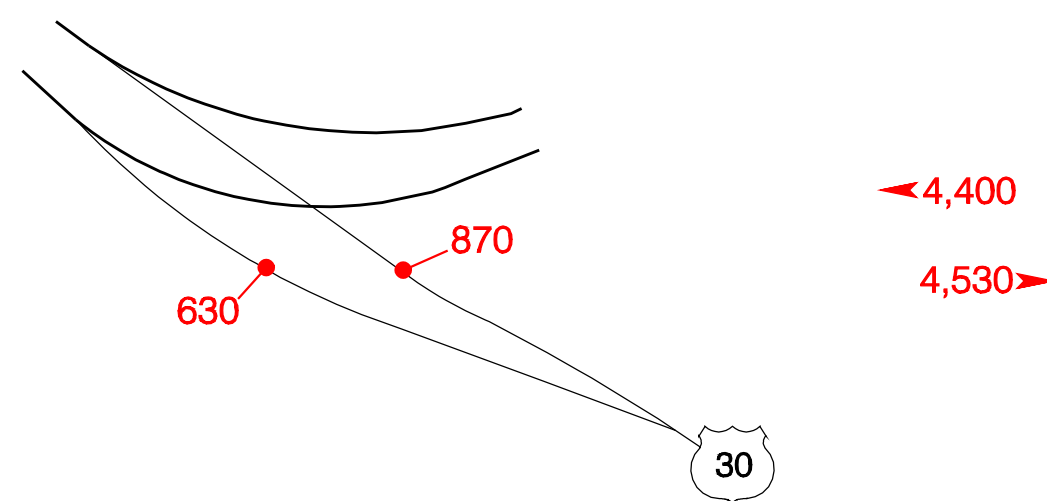
Upper Perry – Exit 256



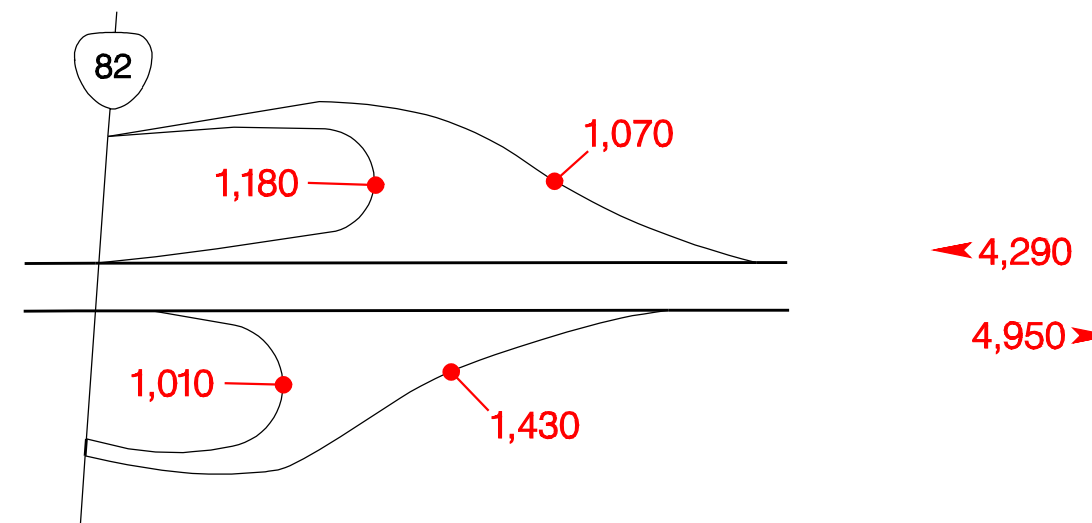
Lower Perry – Exit 257



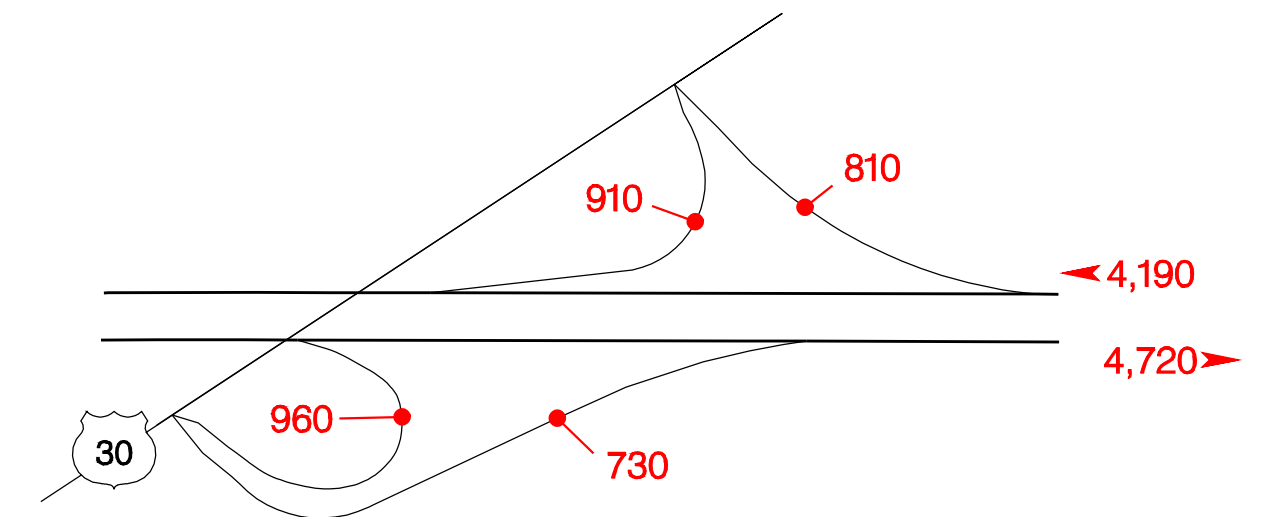
North LaGrande – Exit 259



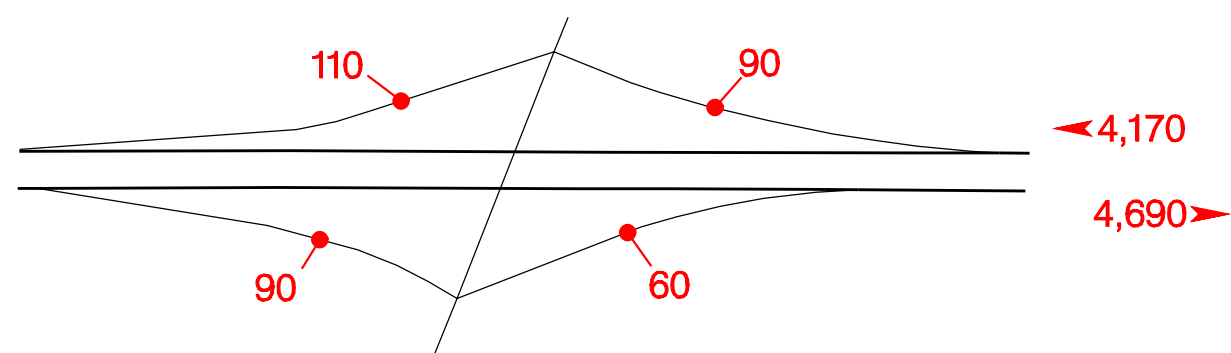
Wallowa Lake – Exit 261



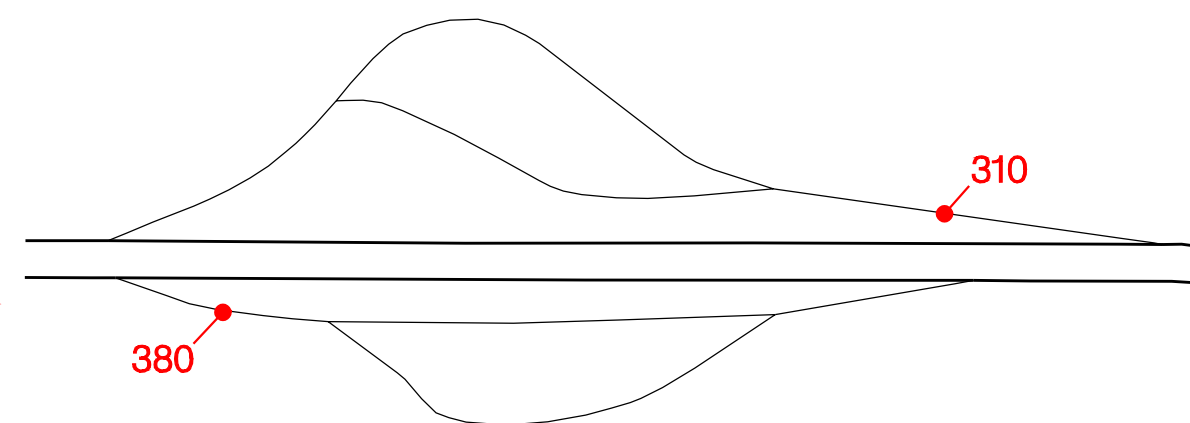
South LaGrande – Exit 264



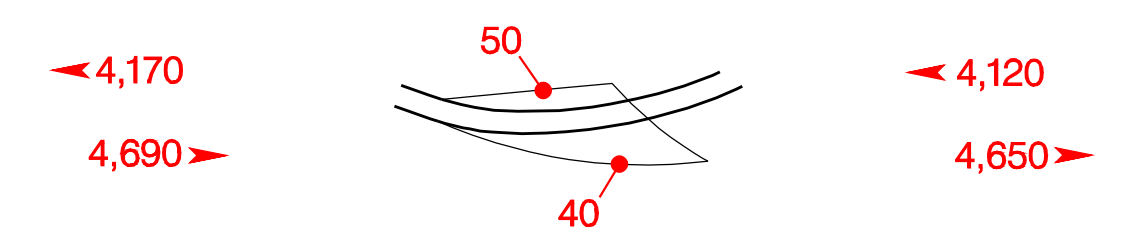
Foothill Road – Exit 268A



Ladd Canyon Rest Area – Exit 268B

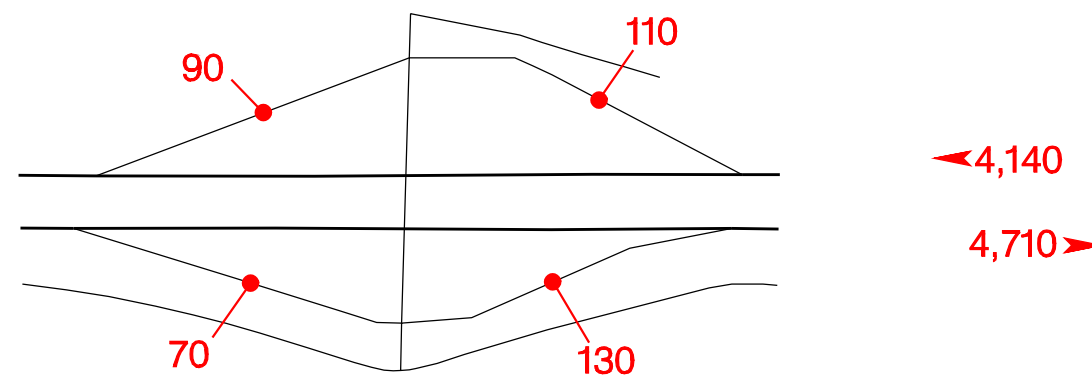


Ladd Creek – Exit 270

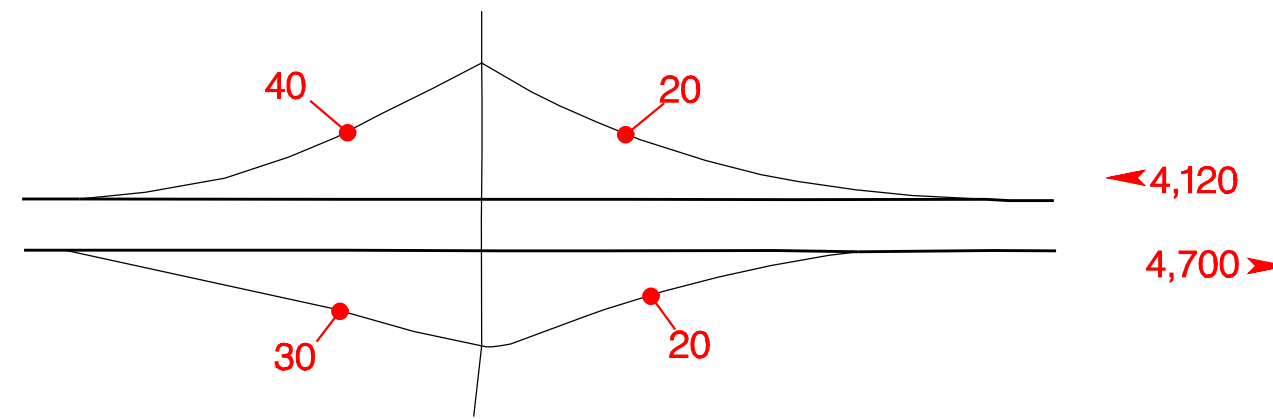


INTERSTATE  INTERCHANGES AND REST AREAS

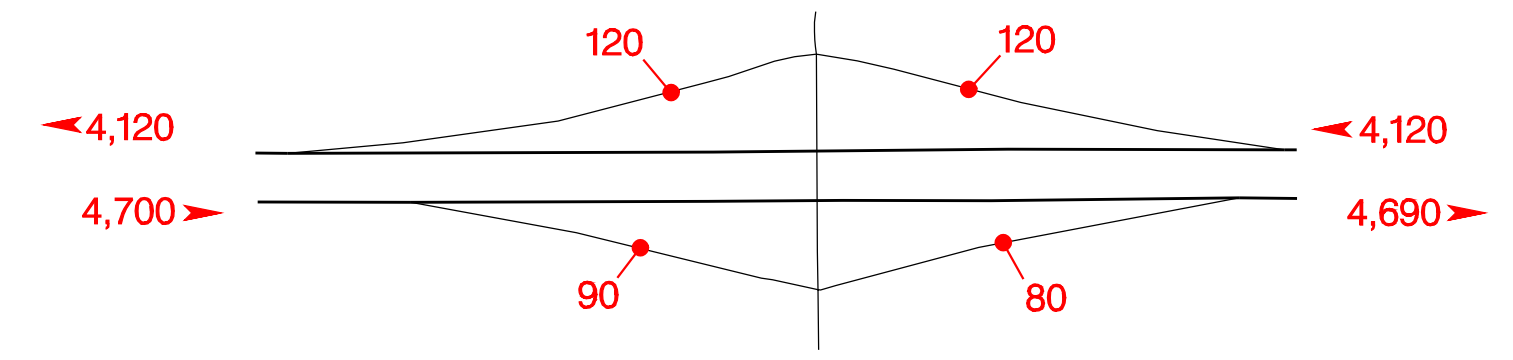
Ladd Canyon – Exit 273



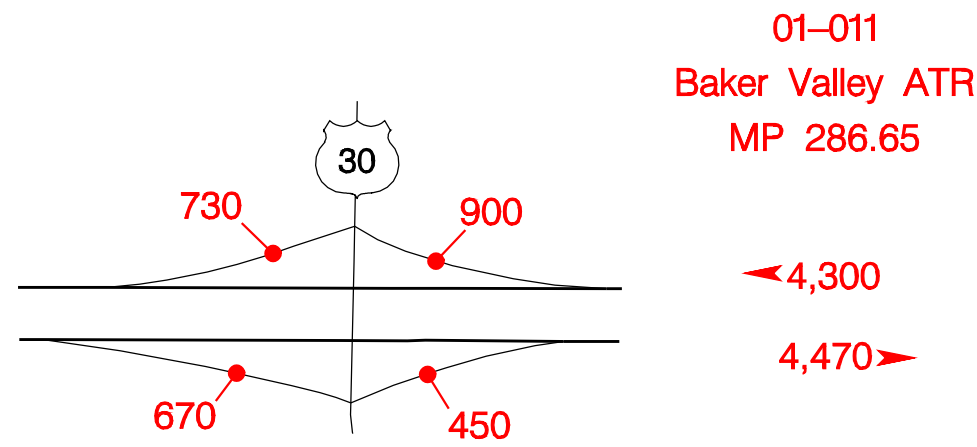
Clover Creek – Exit 278



Wolf Creek – Exit 283

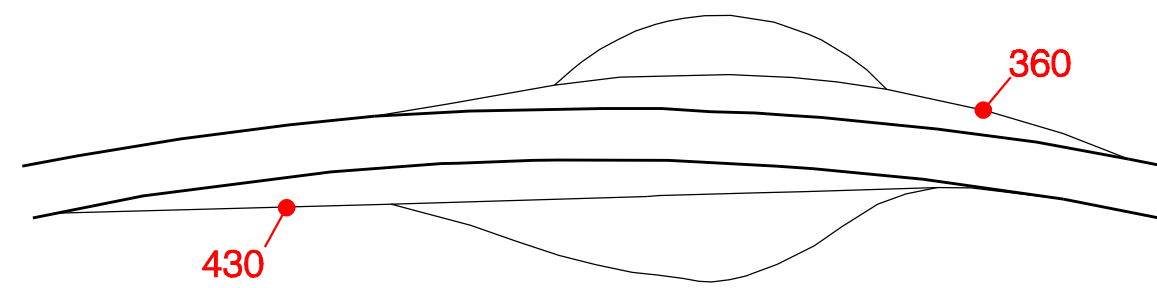


North Powder – Exit 285



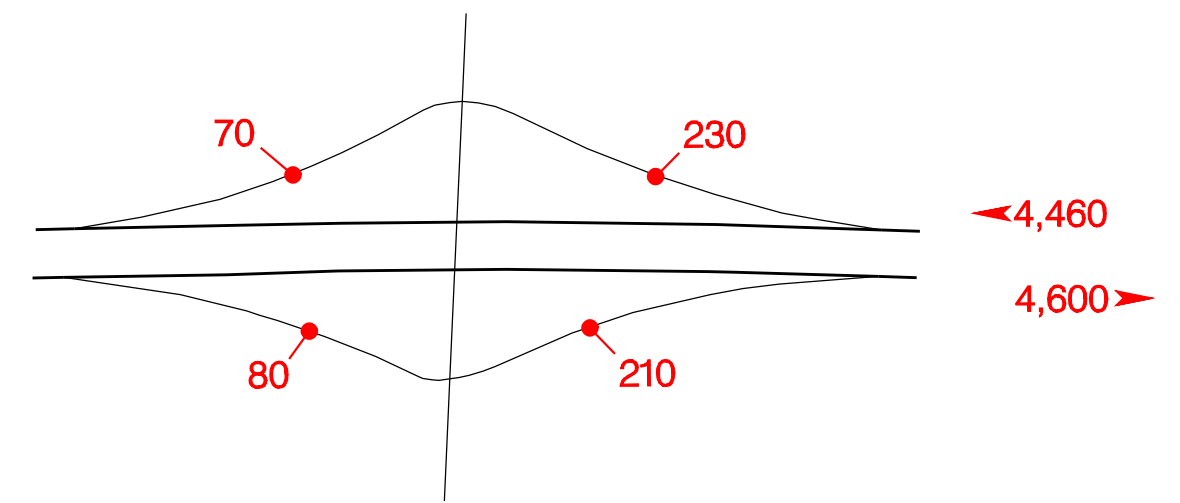
01-011
Baker Valley ATR
MP 286.65

Baker Valley Rest Area – Exit 294

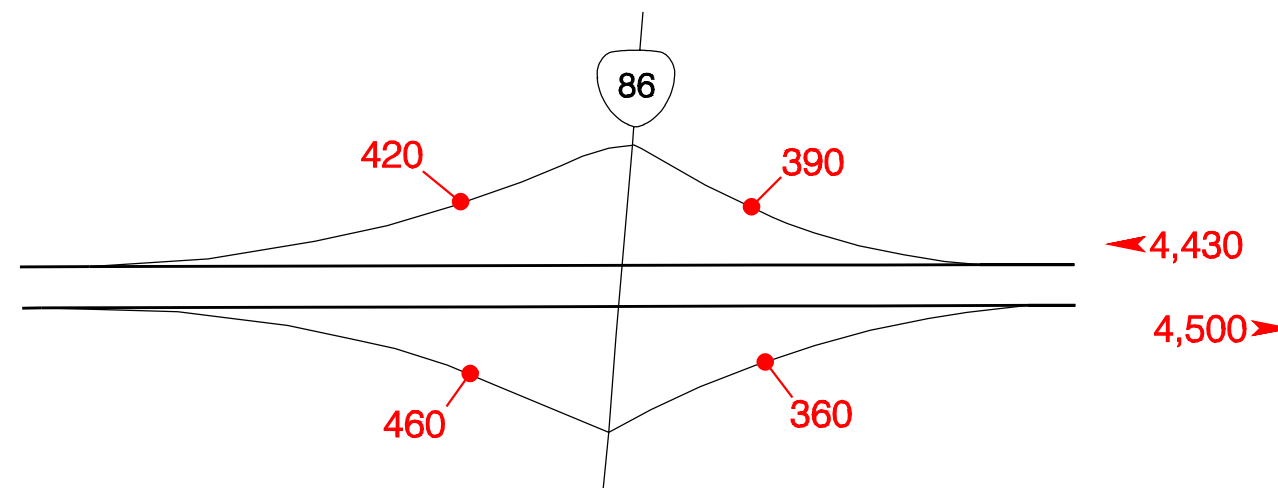


4,300
4,470

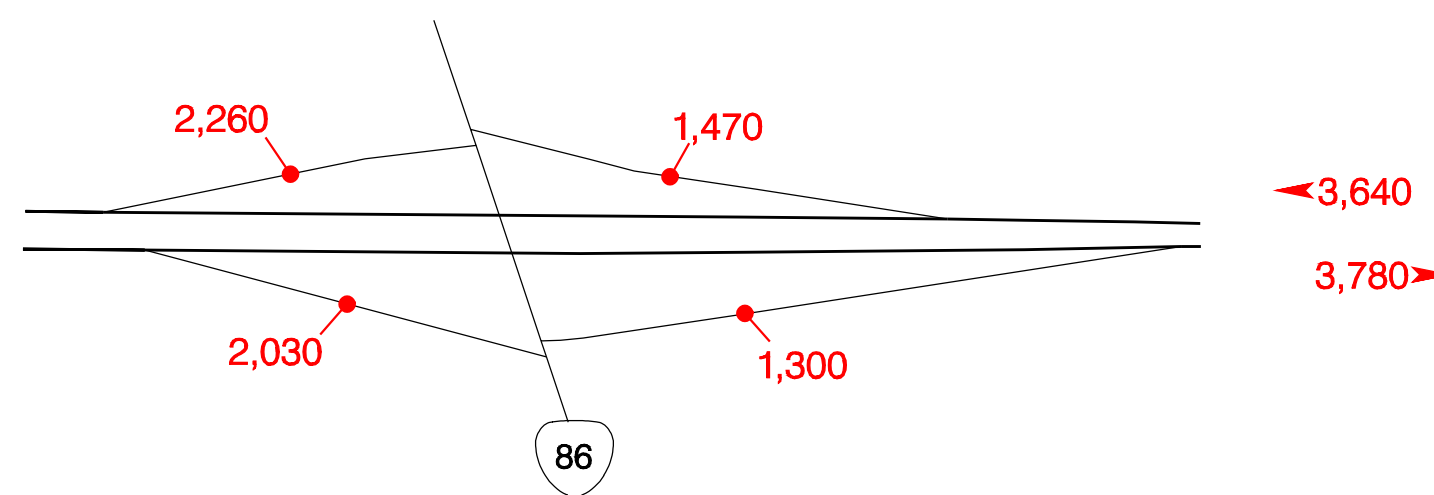
Chandler Lane – Exit 298



Richland – Exit 302

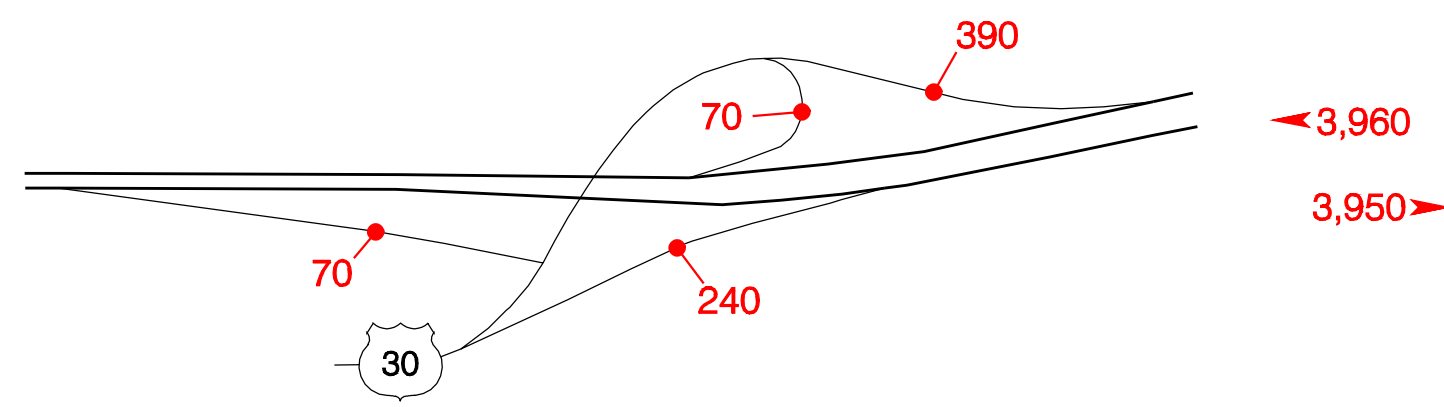


Campbell Street – Exit 304

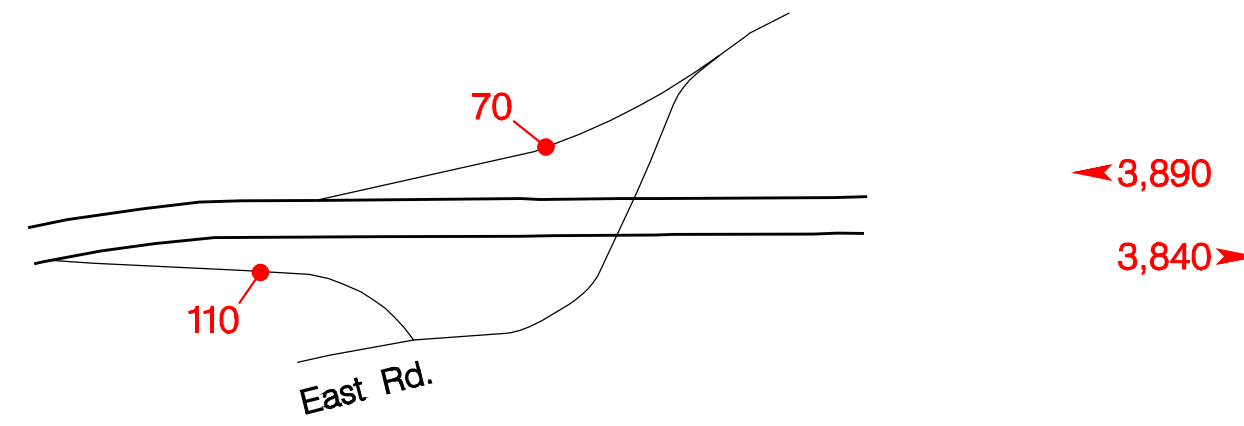


INTERSTATE  INTERCHANGES AND REST AREAS

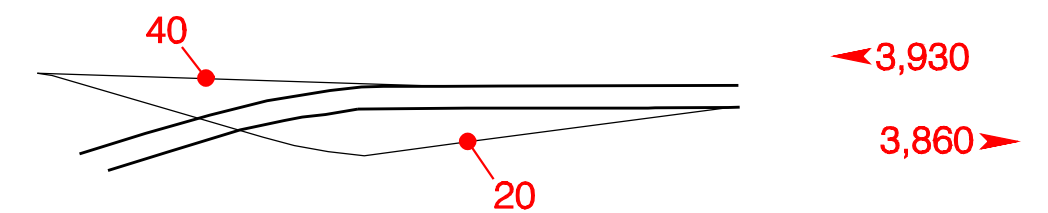
South Baker – Exit 306



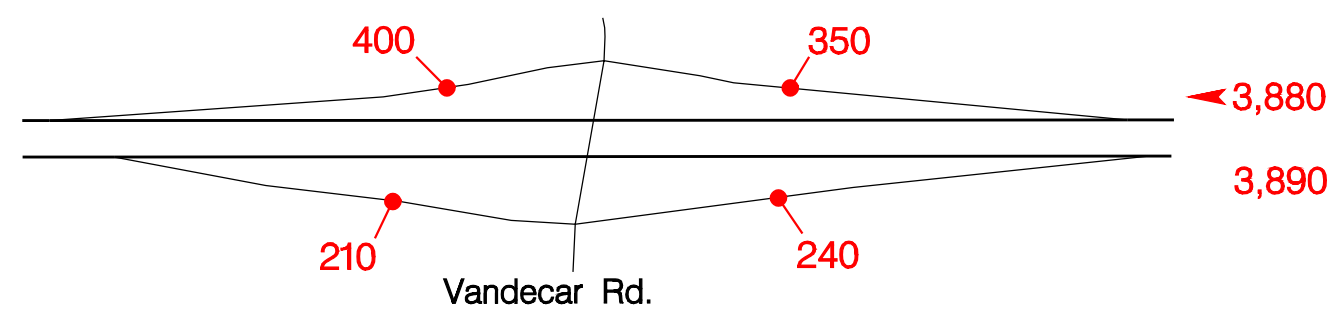
Encina – Exit 313



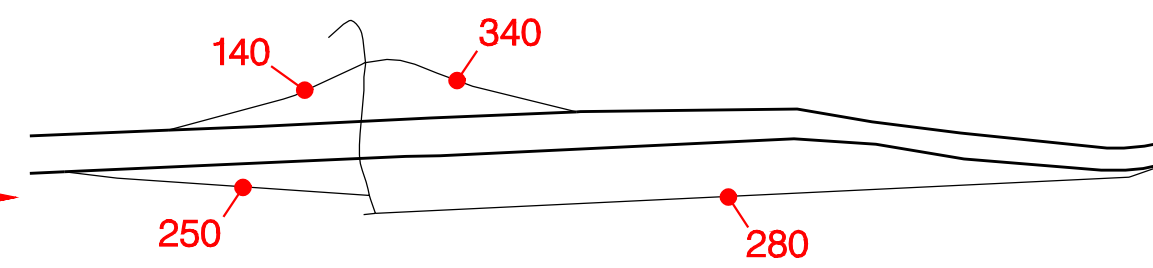
Pleasant Valley – Exit 317



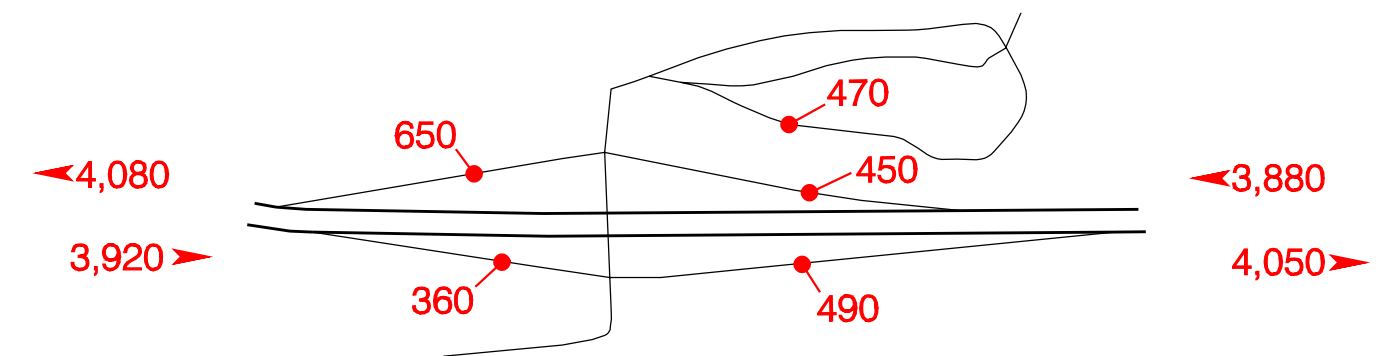
Durkee – Exit 327



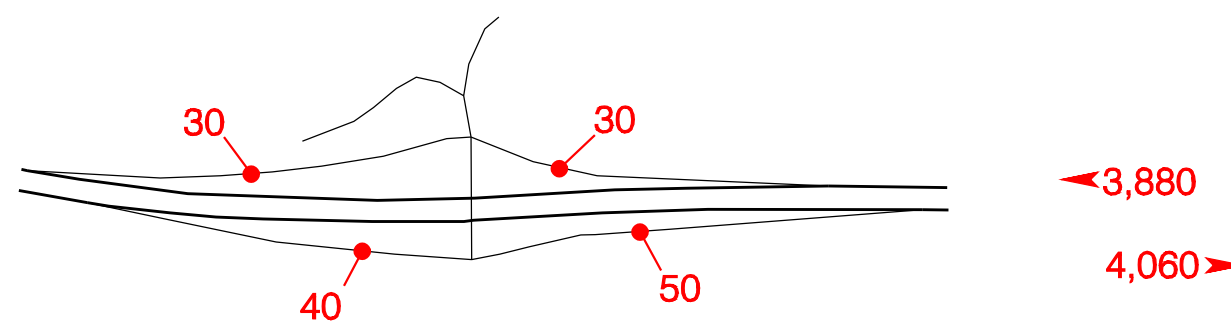
Nelson – Exit 330



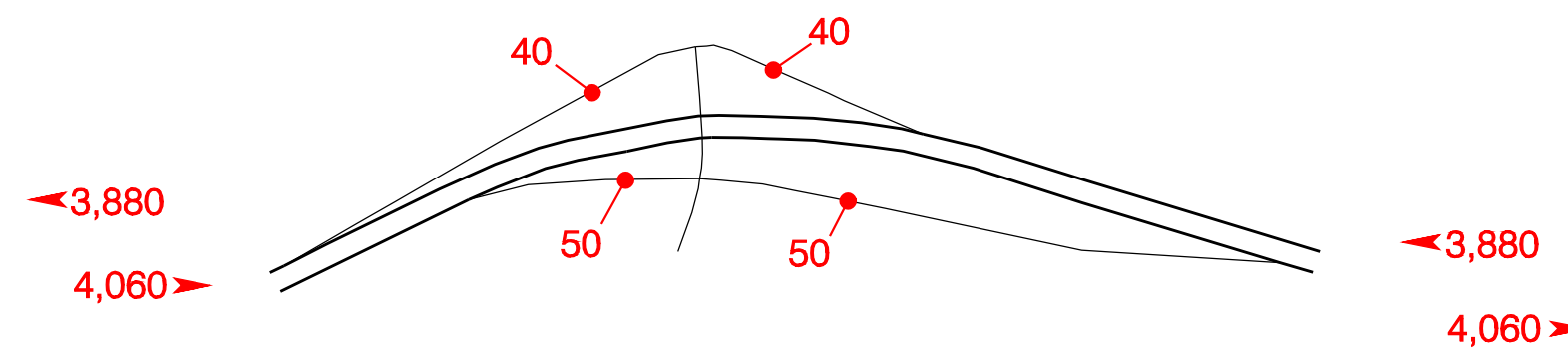
Weatherby – Exit 335



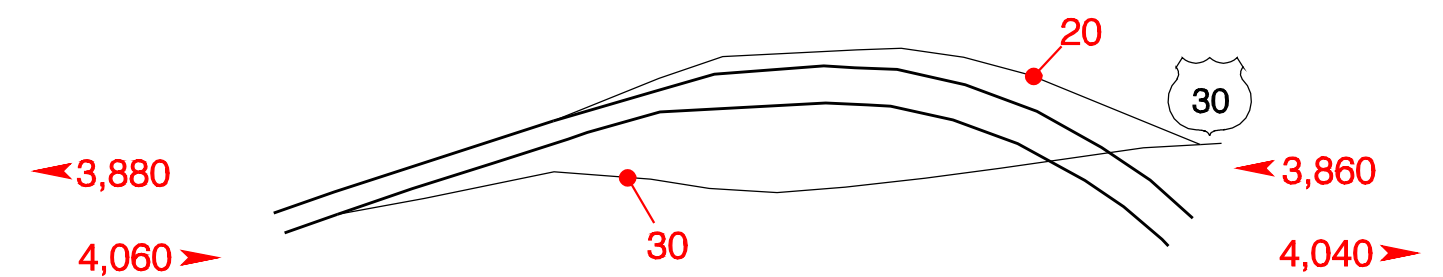
Jordan Creek – Exit 338



Dixie – Exit 340

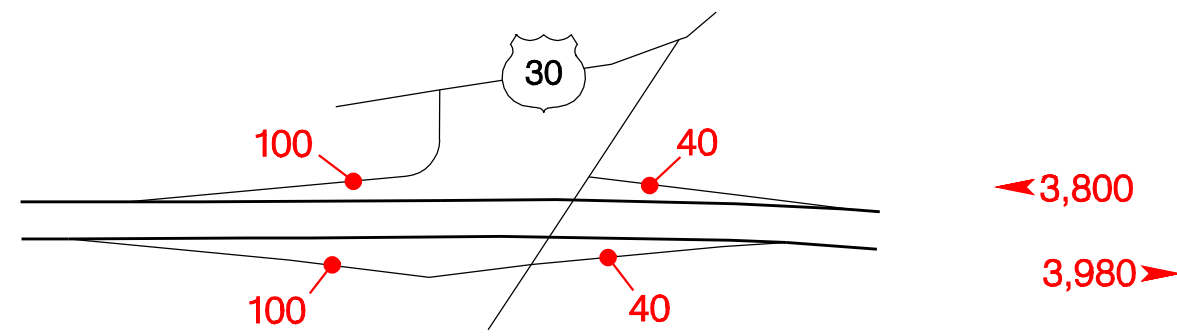


Lime – Exit 343

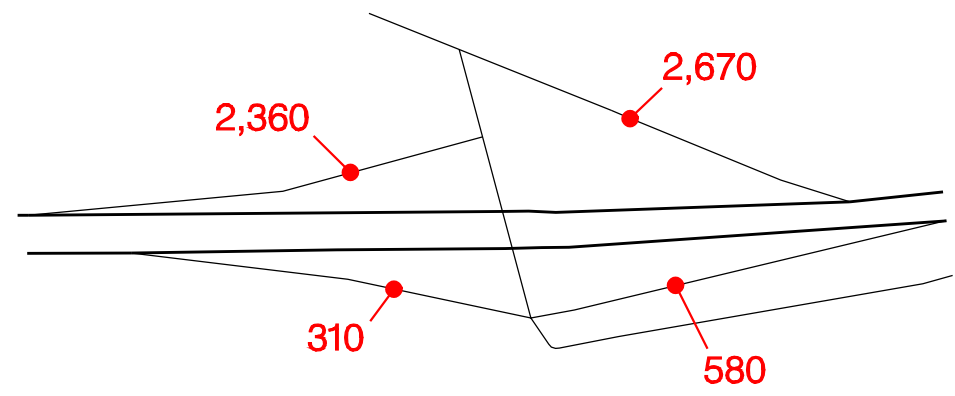


INTERSTATE 84 INTERCHANGES AND REST AREAS

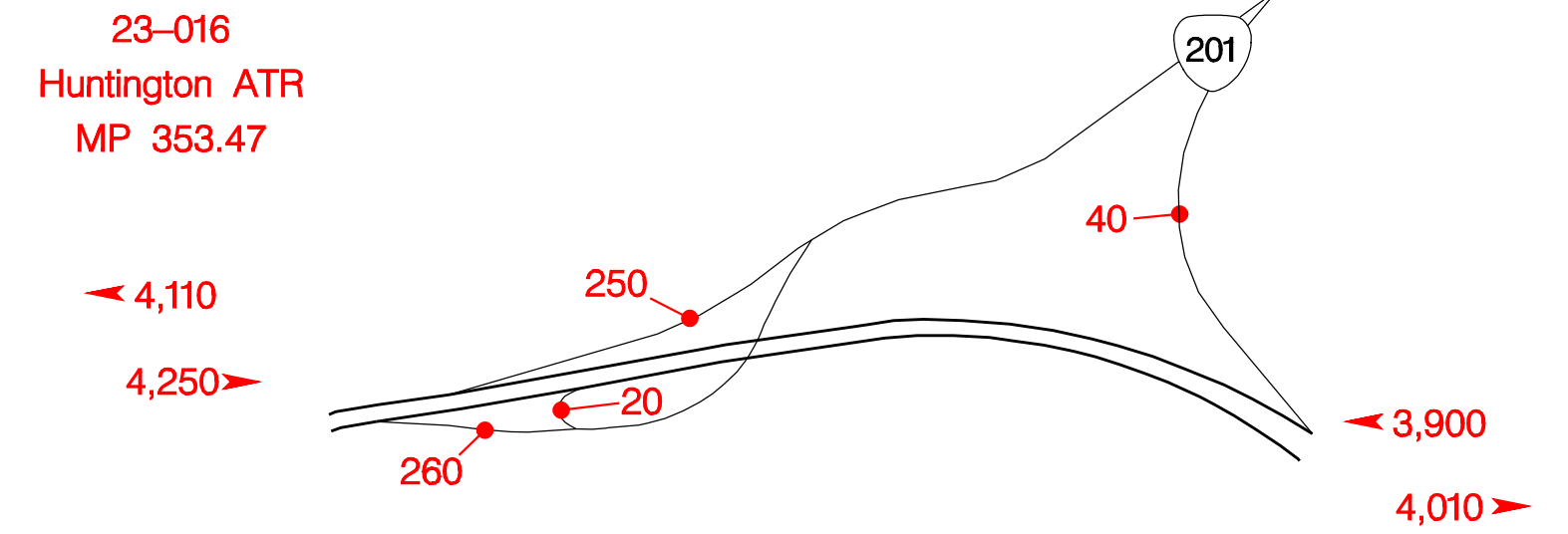
North Huntington – Exit 345



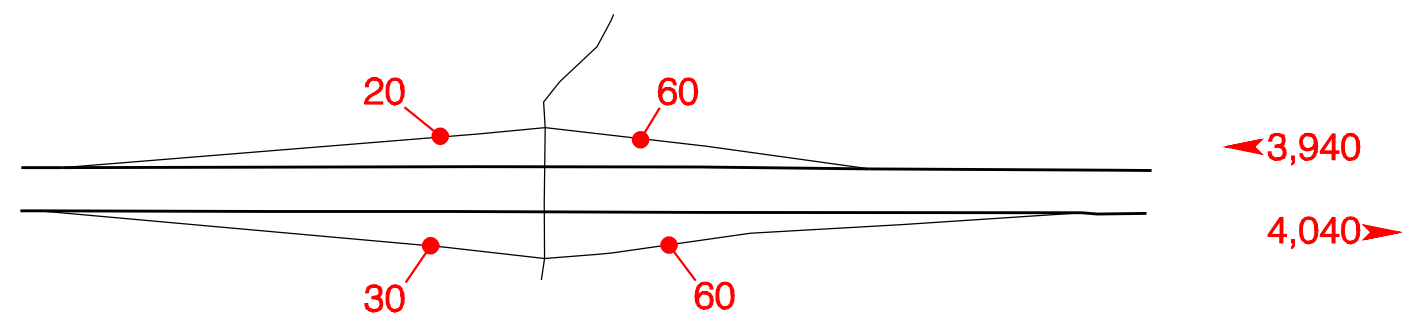
Benson – Exit 352



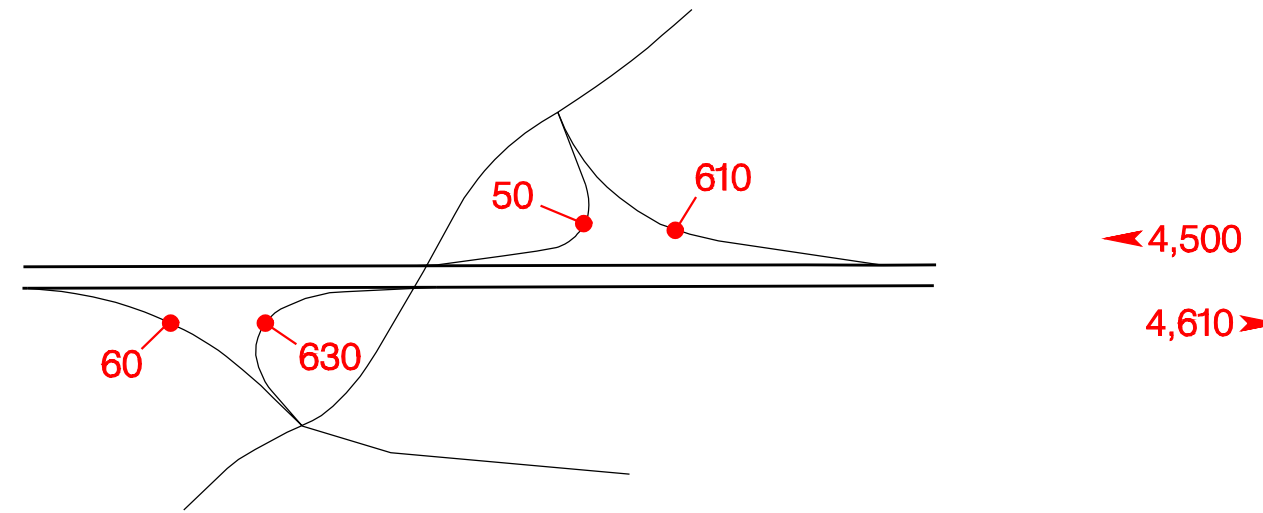
Olds Ferry – Exit 356



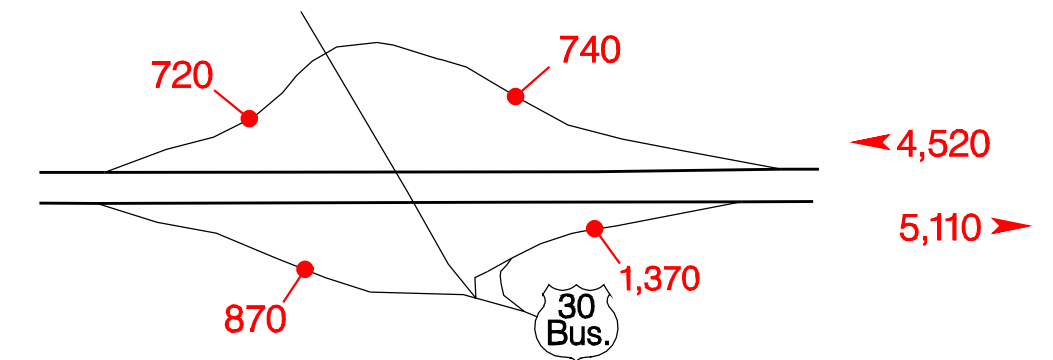
Moore's Hollow – Exit 362



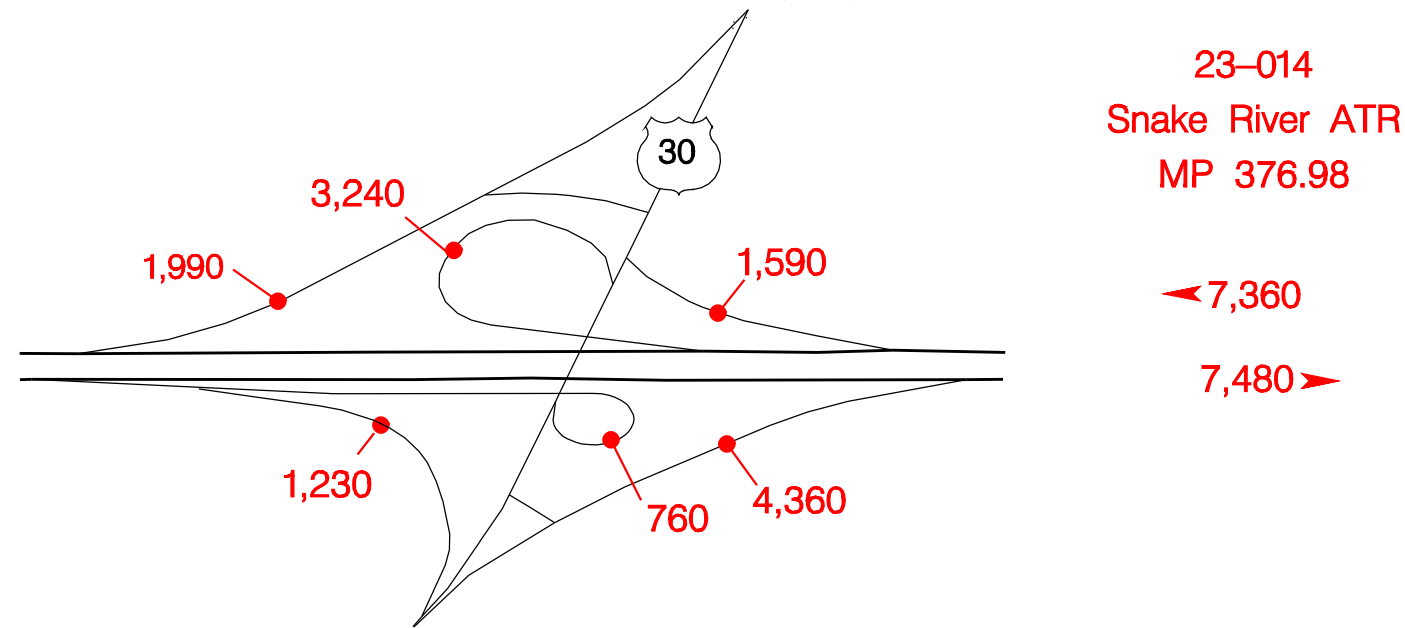
Stanton Blvd. – Exit 371



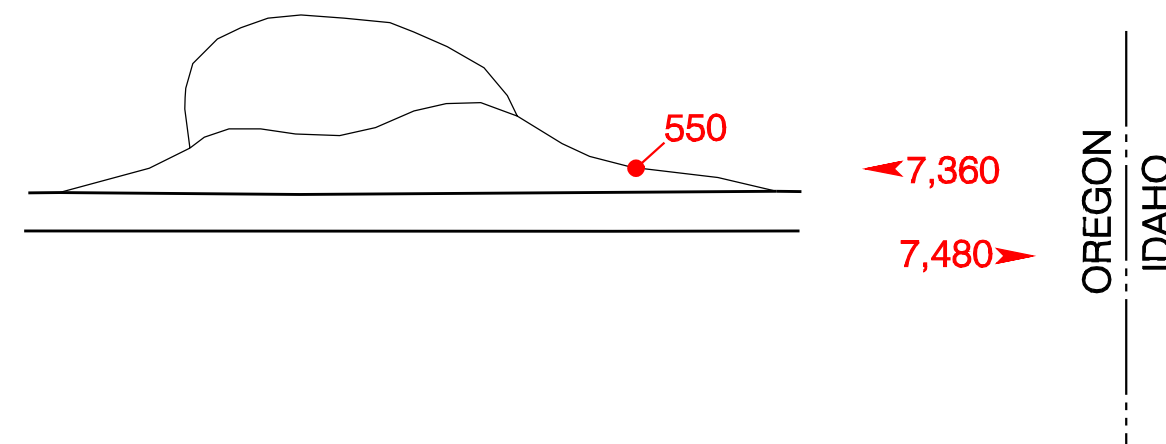
North Ontario – Exit 374



Idaho Avenue – Exit 376



Ontario Rest Area – Exit 377



23-014
Snake River ATR
MP 376.98

23-016
Huntington ATR
MP 353.47

OREGON
IDAHO