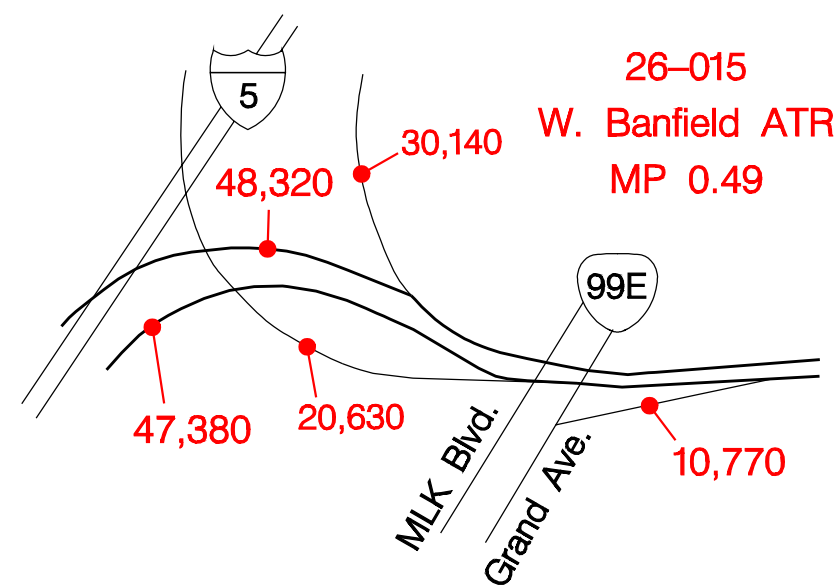


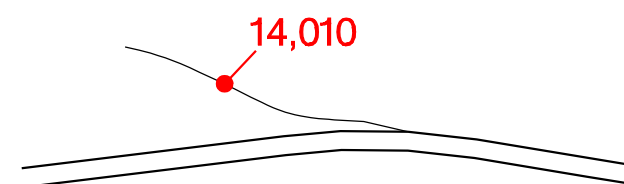
INTERSTATE  INTERCHANGES AND REST AREAS

Pacific Hwy. Exit 0



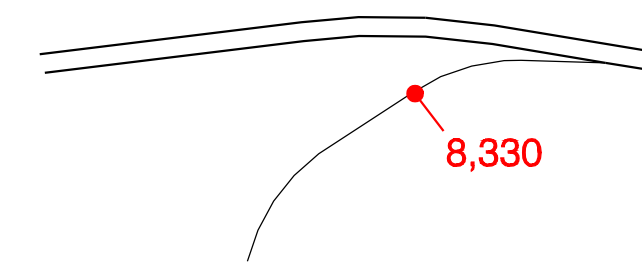
76,550
78,130

NE Holladay St. – Exit 1A



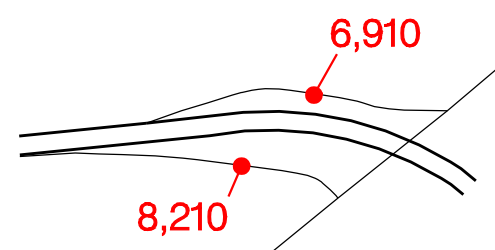
90,560
78,130

NE 16th Ave. – Exit 1B



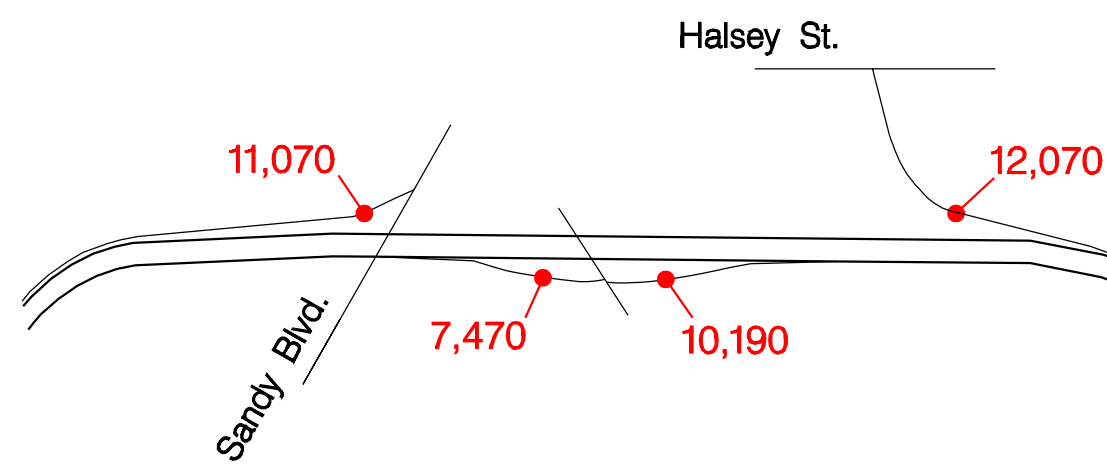
90,560
86,460

NE 33rd Ave. – Exit 2A



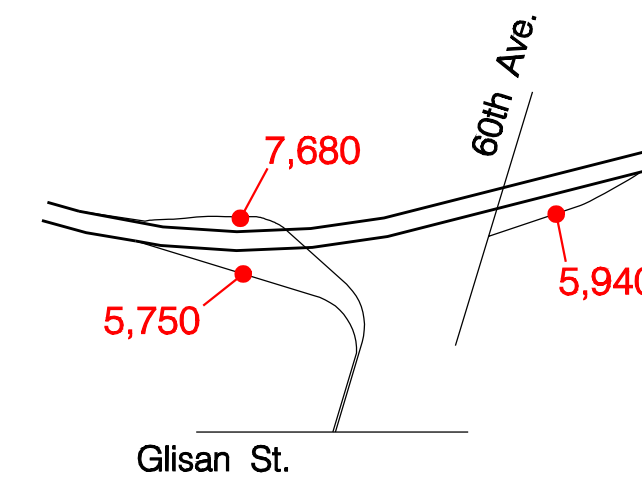
83,650
78,250

NE 39th Ave. – Exit 2B



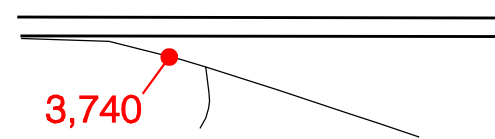
26-014
Hoyt ATR
MP 3.35
84,650
80,970

NE Glisan St. – Exit 3



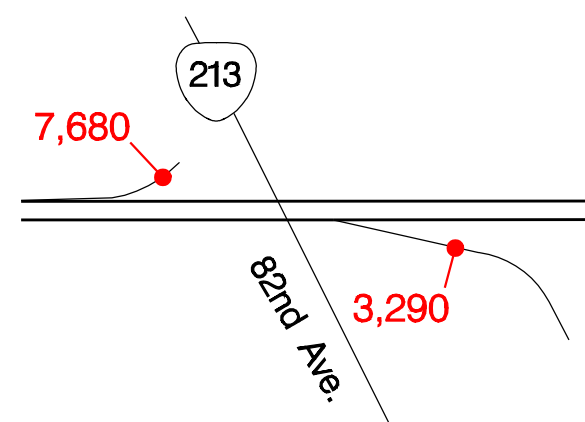
76,970
81,160

NE 68th Ave. – Exit 4



76,970
77,420

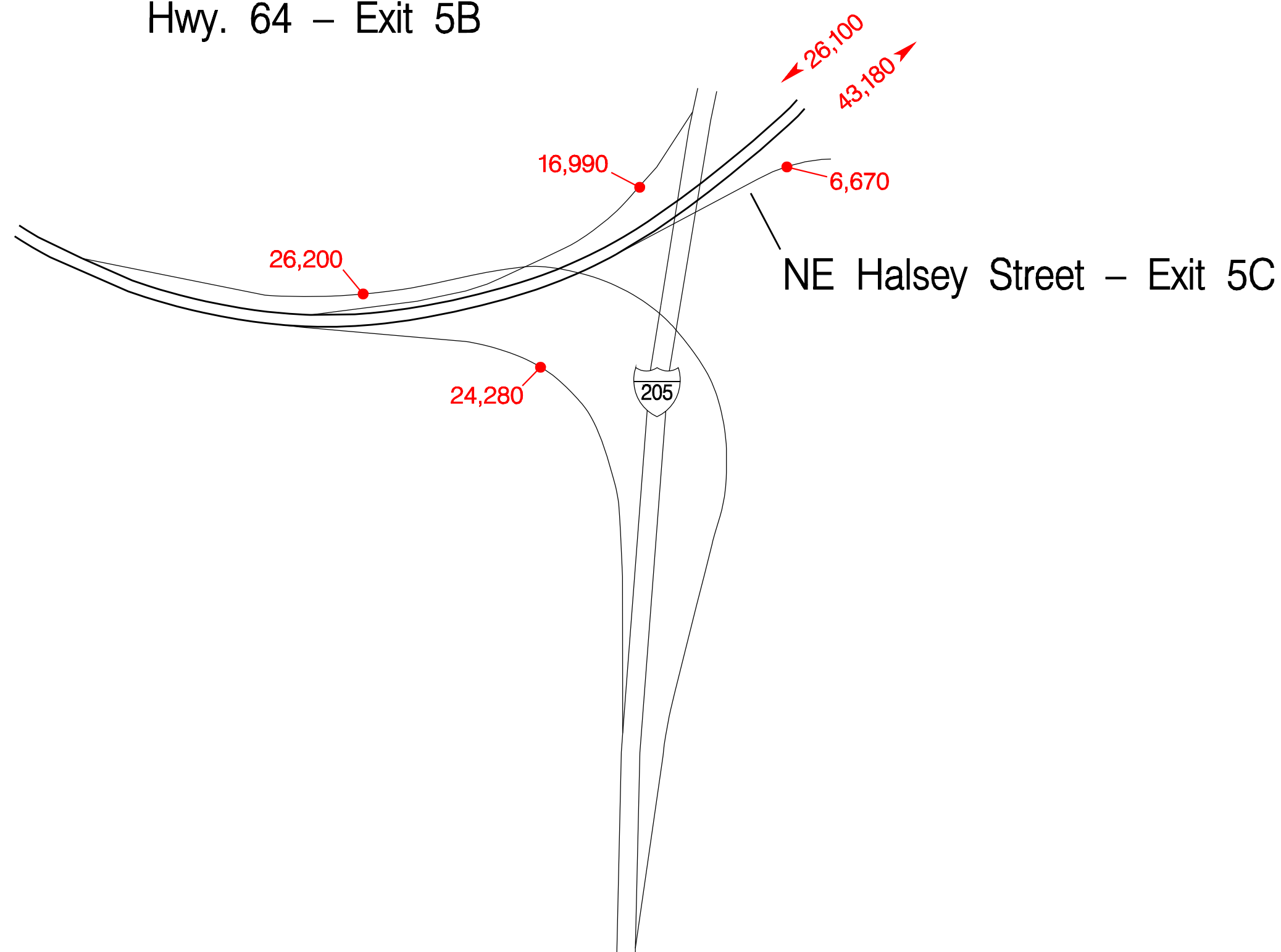
Cascade Hwy. – Exit 5A



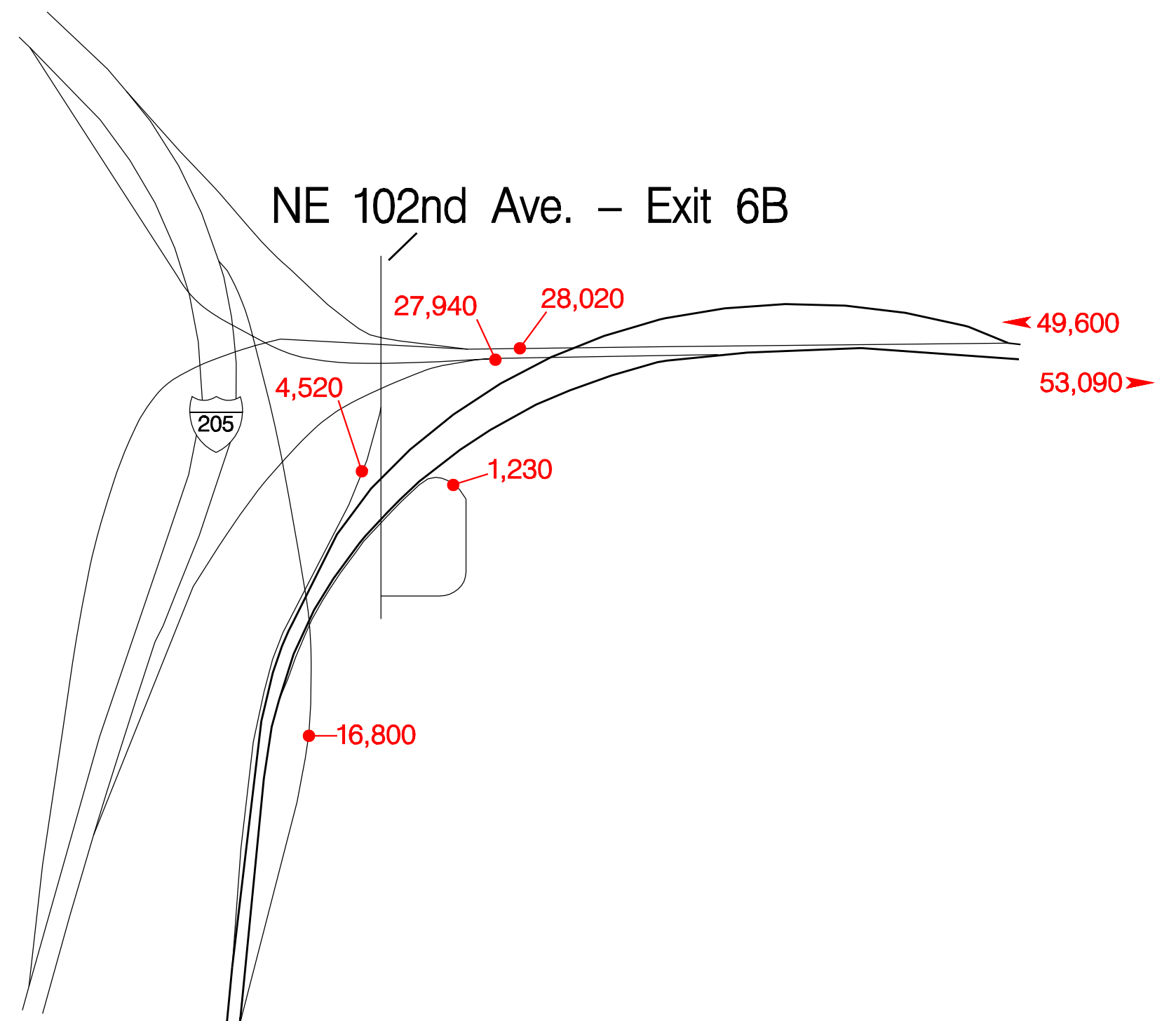
69,290
74,130

INTERSTATE INTERCHANGES AND REST AREAS

Hwy. 64 – Exit 5B

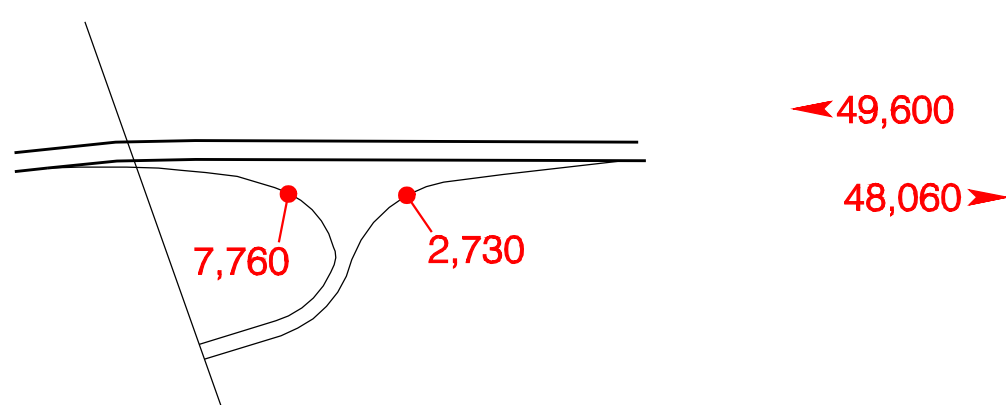


North Banfield – Exit 6A

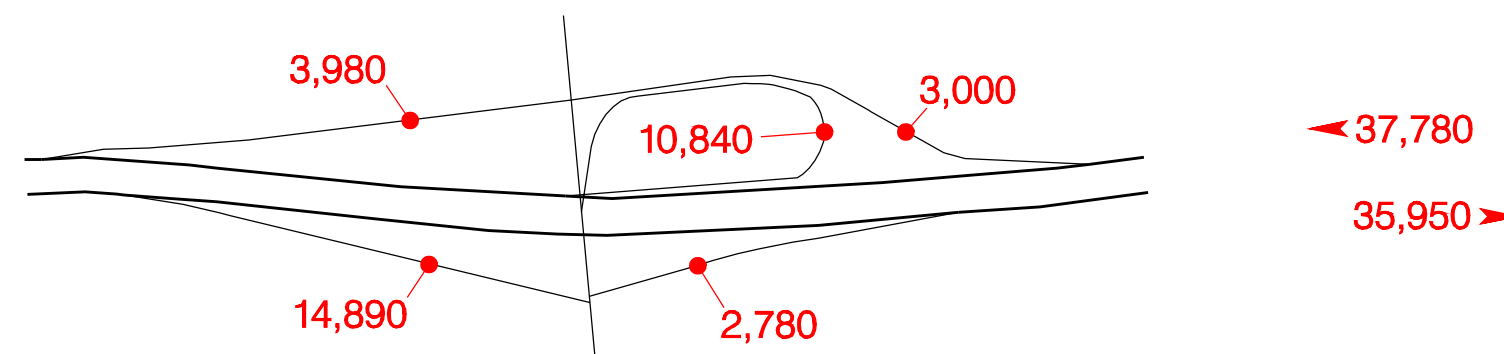


167

NE 122nd Ave. – Exit 10

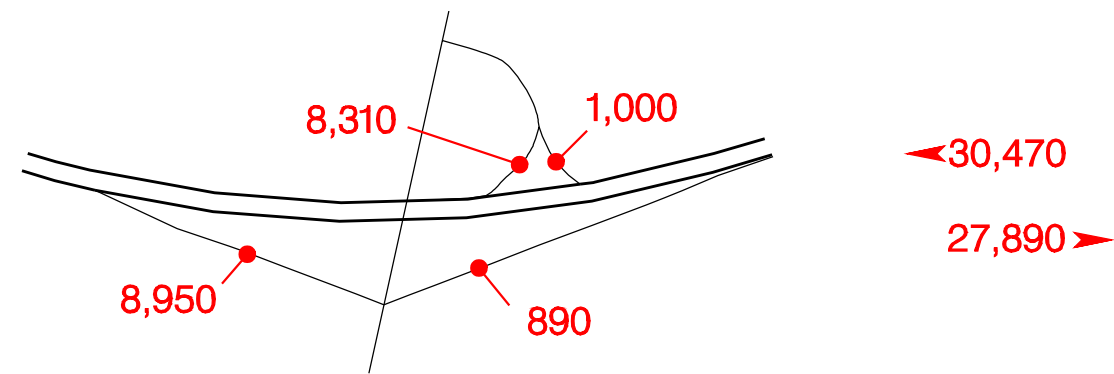


NE 181st Ave. – Exit 13

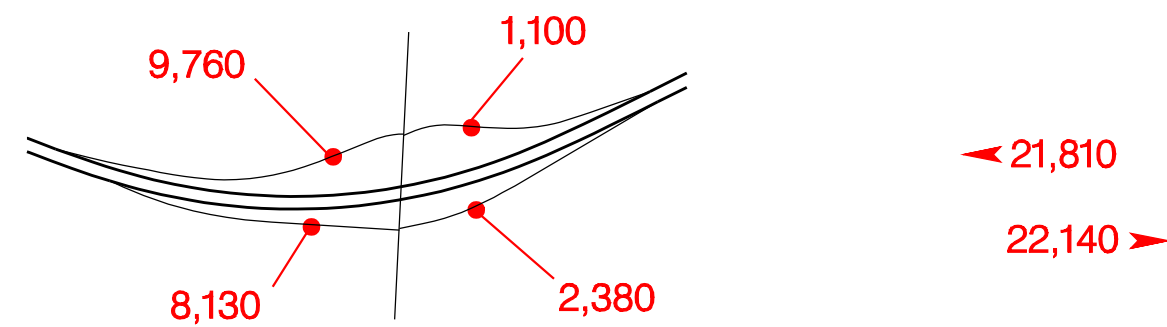


INTERSTATE  INTERCHANGES AND REST AREAS

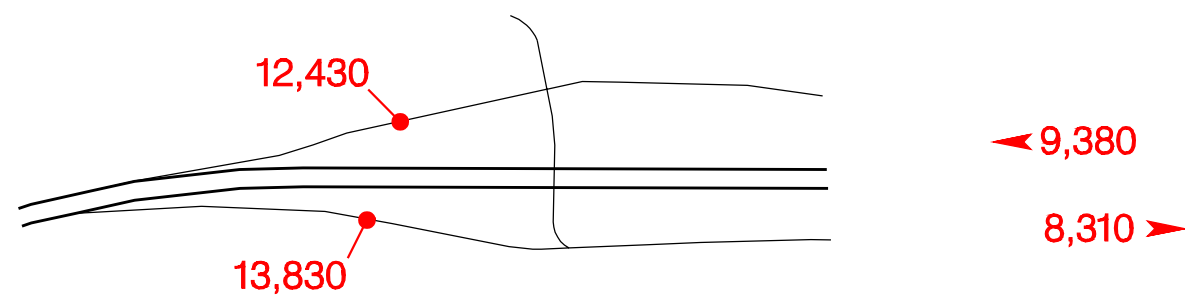
NE 207th Ave. – Exit 14



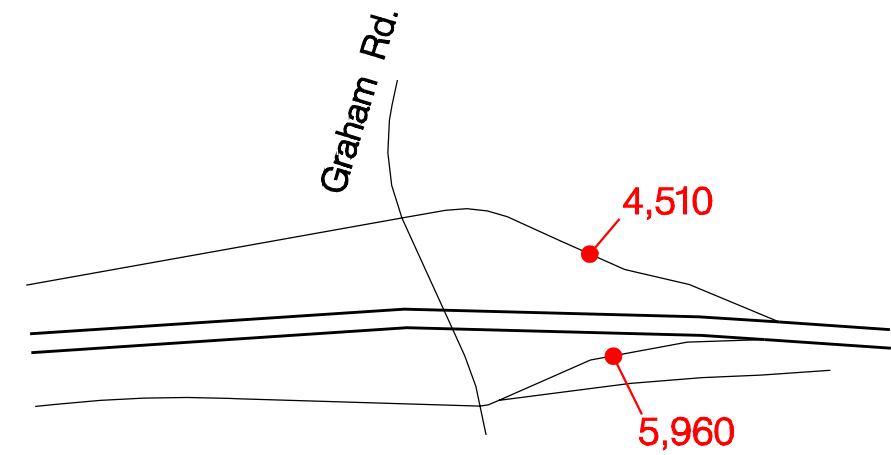
NE 238th Ave. – Exit 16A



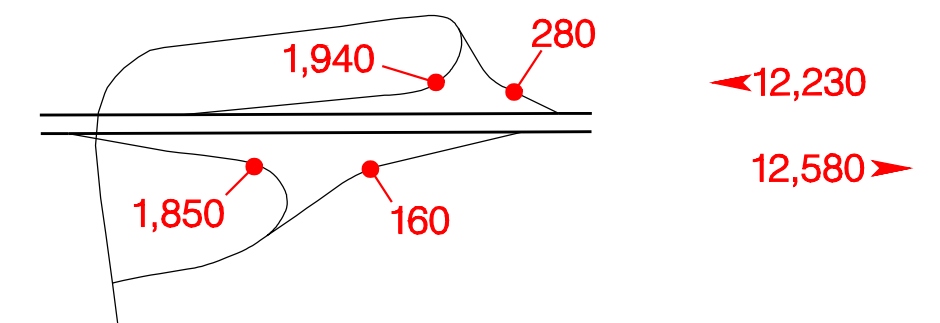
NE Marine Drive – Exit 17



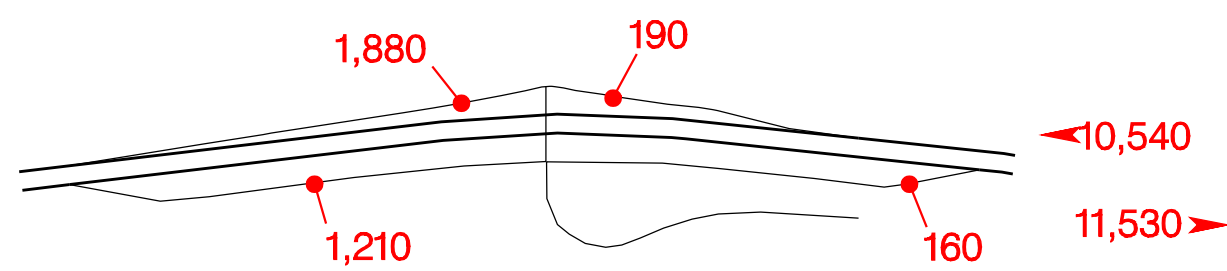
Troutdale – Exit 17



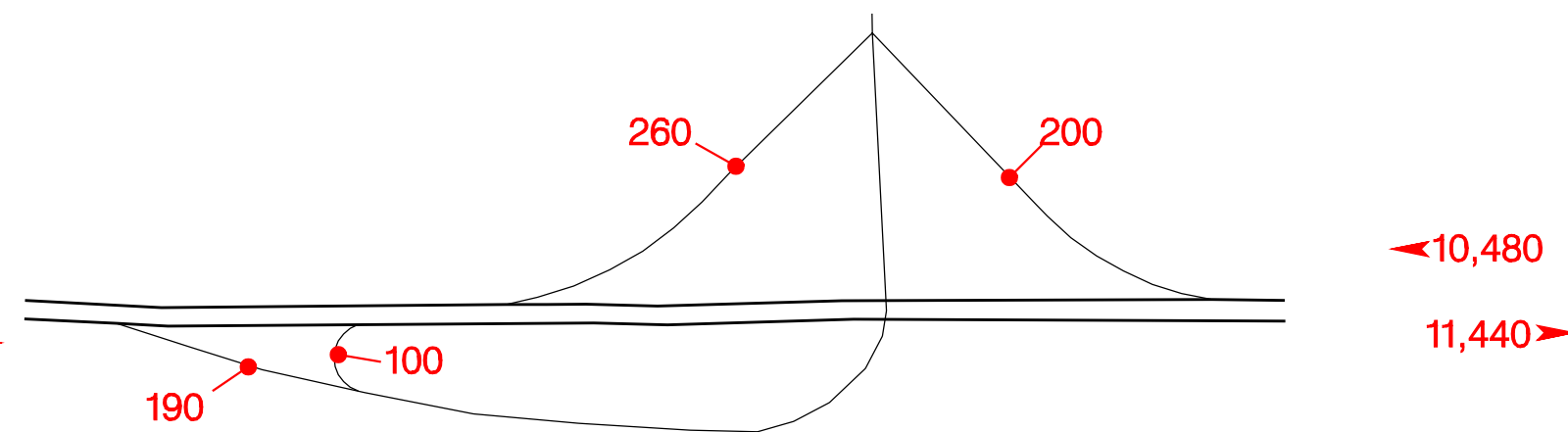
Jordan – Exit 18



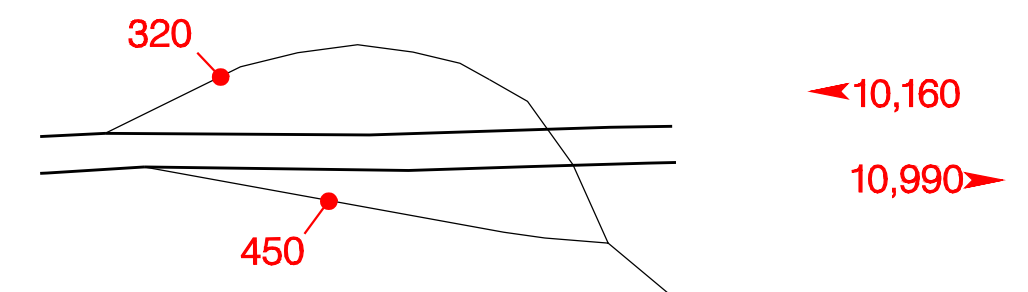
Corbett – Exit 22



Rooster Rock – Exit 24



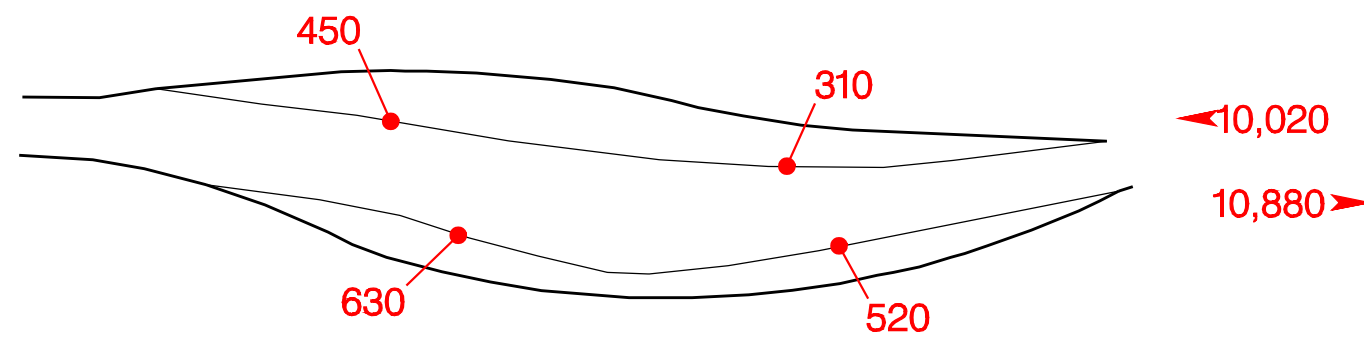
Bridal Veil – Exit 28



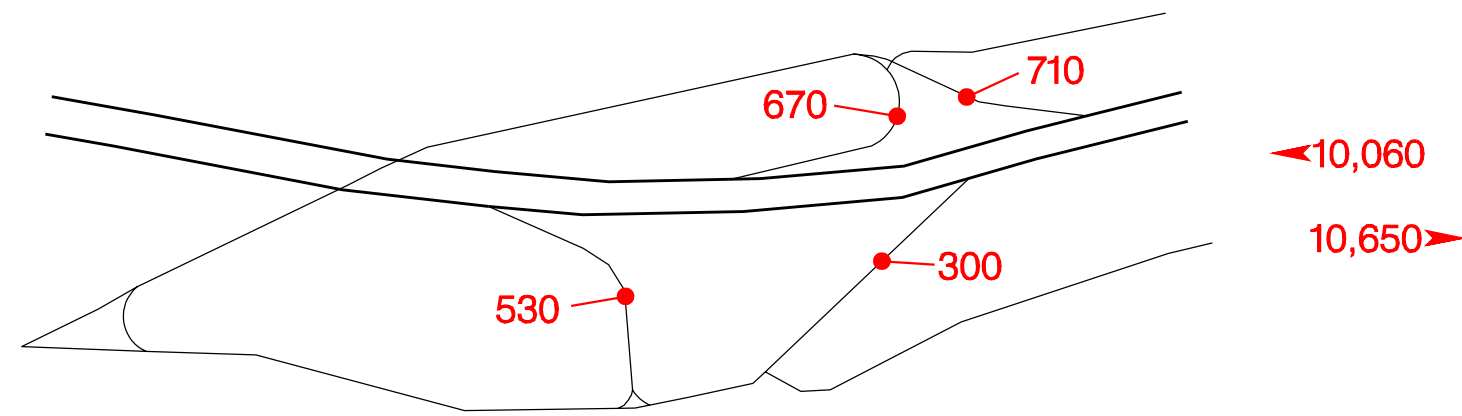
26-001
Troutdale ATR
MP 17.71

INTERSTATE  INTERCHANGES AND REST AREAS

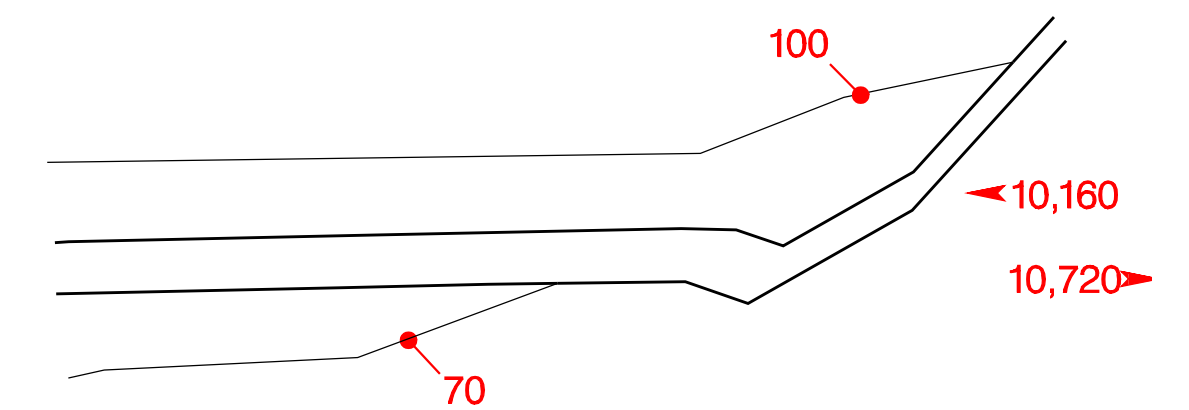
Multnomah Falls – Exit 31



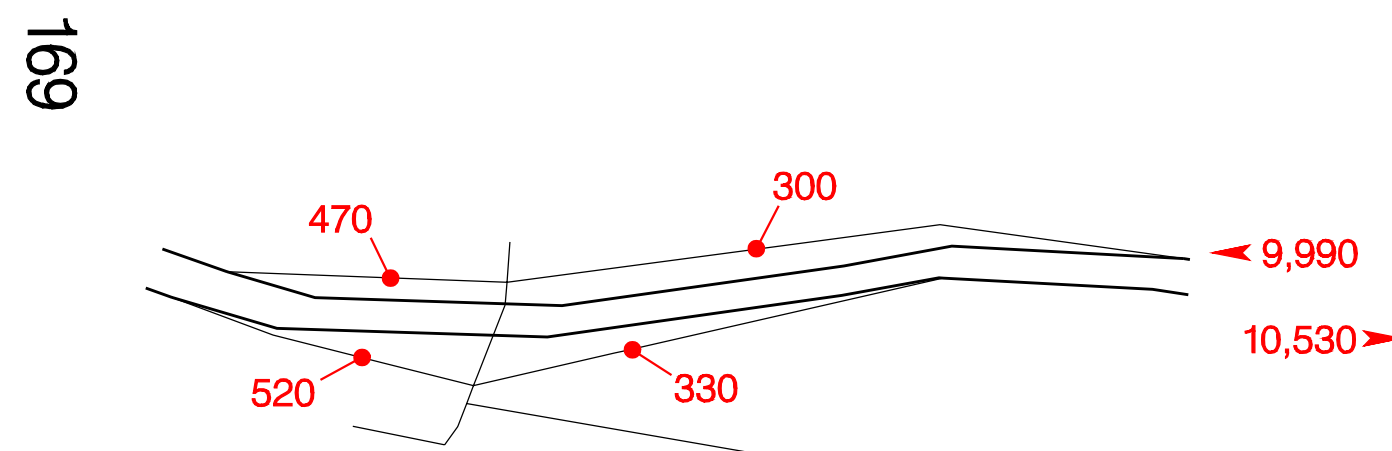
Historic Col. River Hwy. – Exit 35A



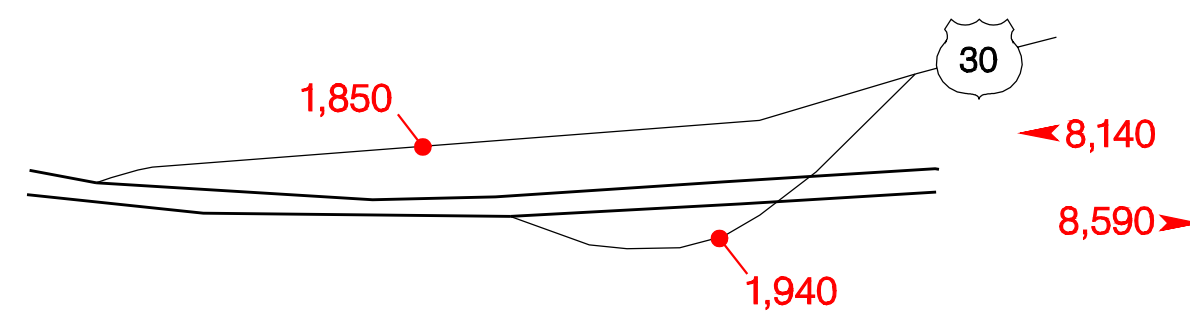
Warrendale O'King – Exit 37



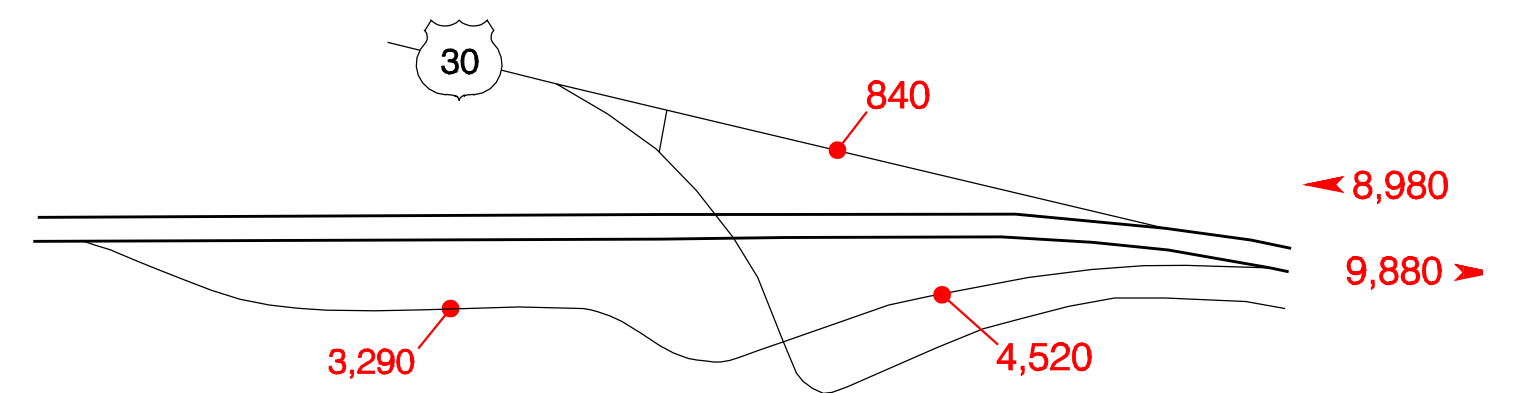
Bonneville Dam – Exit 40



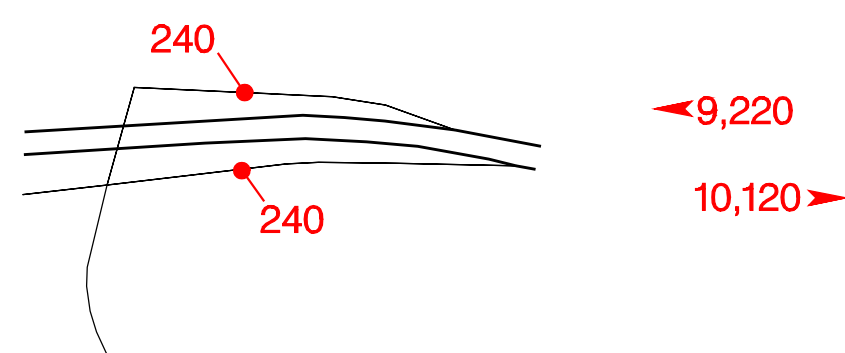
West Cascade Locks – Exit 43



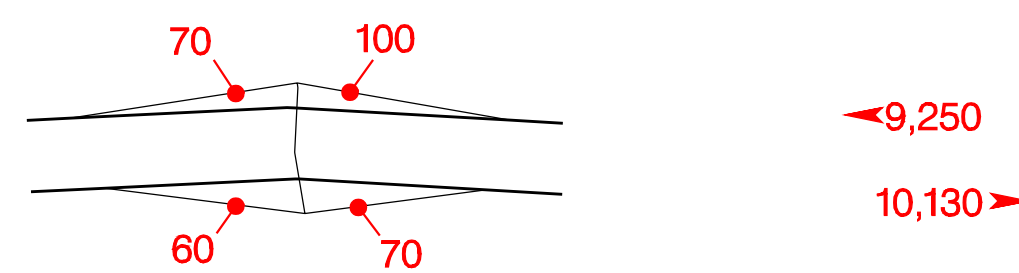
East Cascade Locks – Exit 45



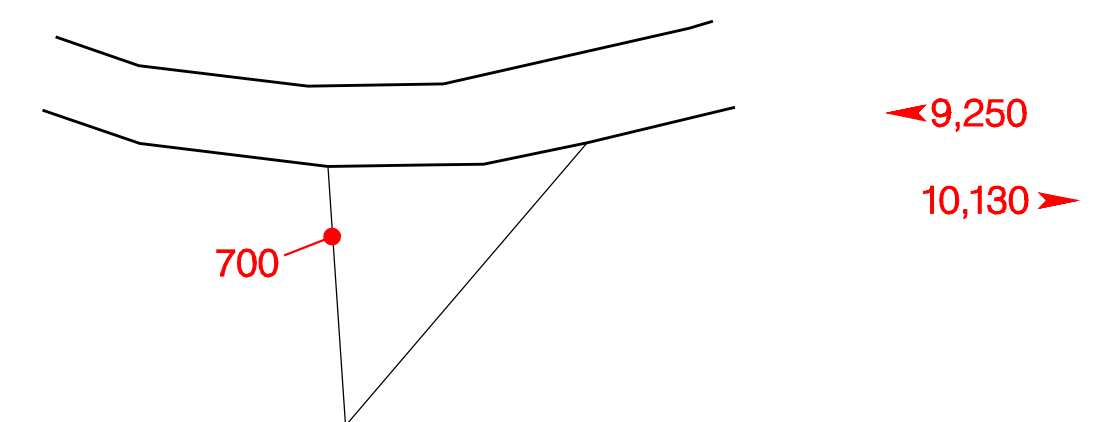
Herman Creek – Exit 47



Wyeth – Exit 50

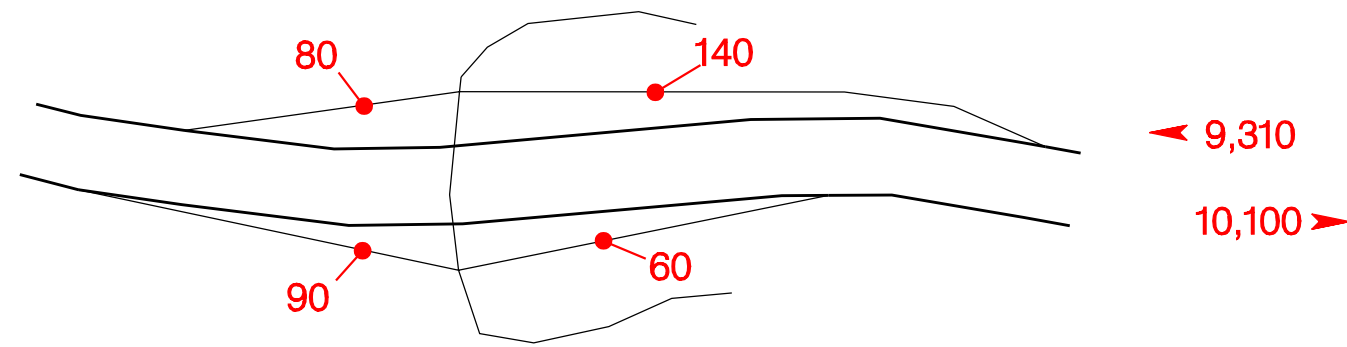


Starvation Creek State Park – Exit 54

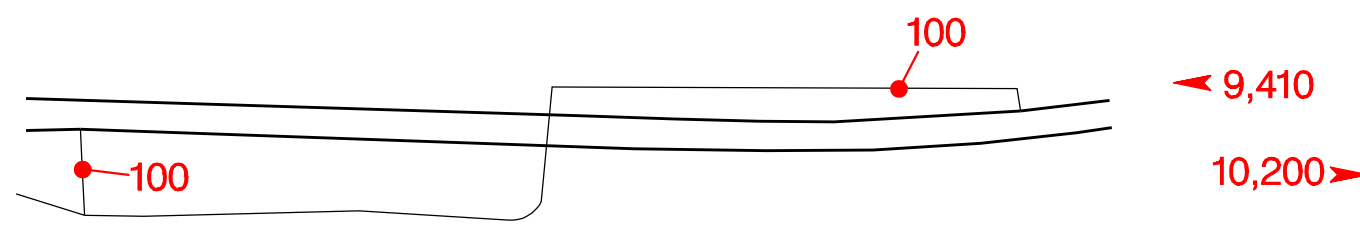


INTERSTATE INTERCHANGES AND REST AREAS

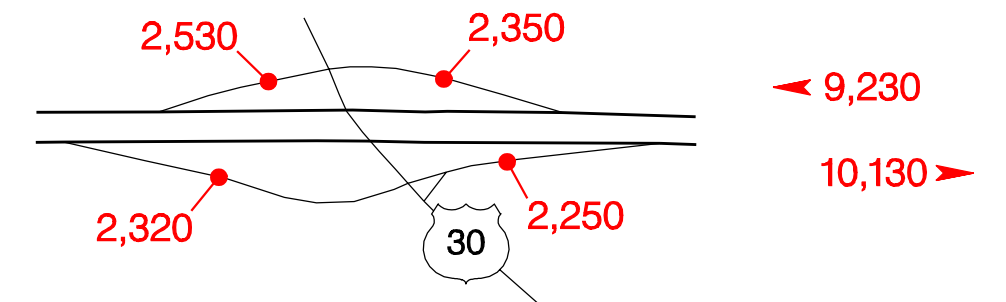
Viento State Park – Exit 56



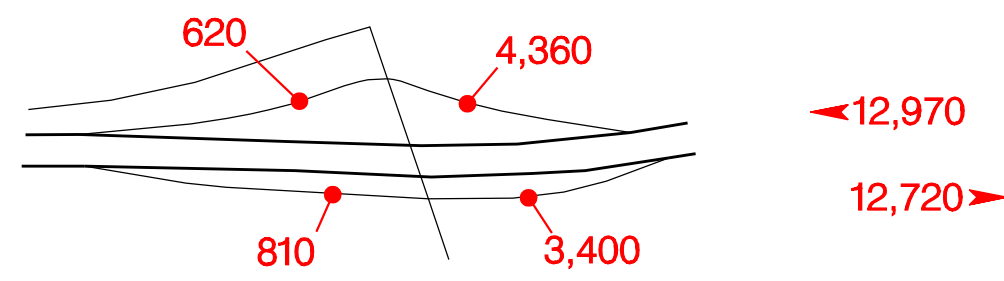
Mitchell Point – Exit 58



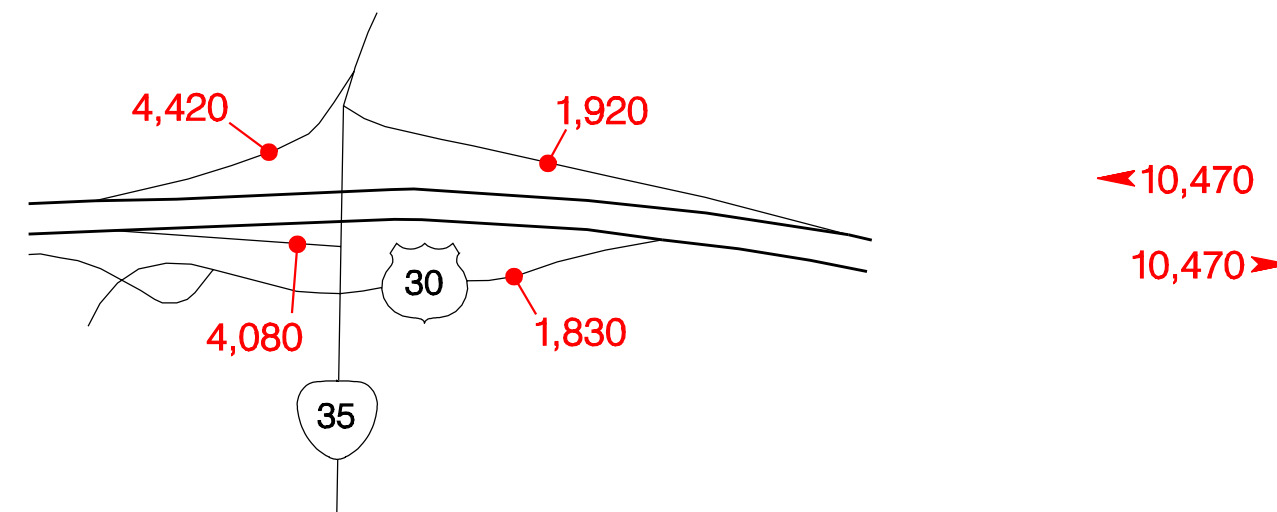
West Hood River – Exit 62



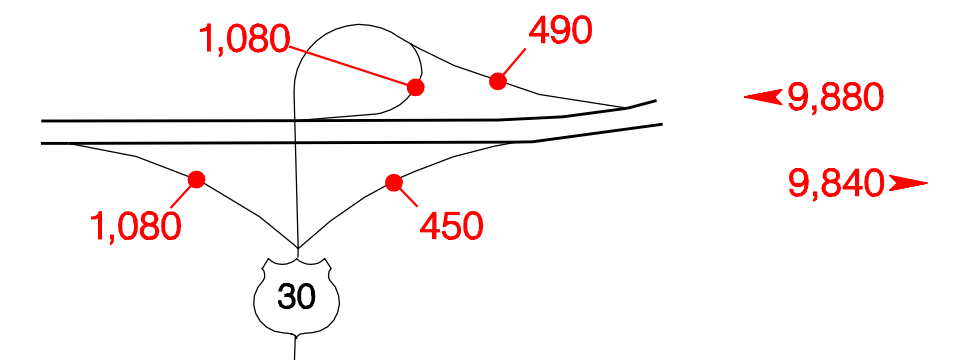
2nd Street – Exit 63



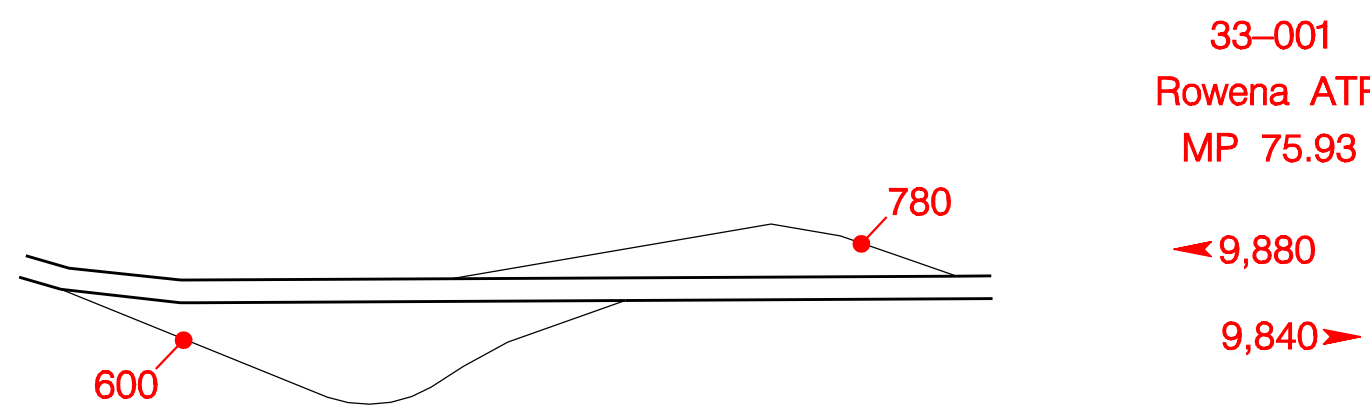
East Hood River – Exit 64



Mosier – Exit 69

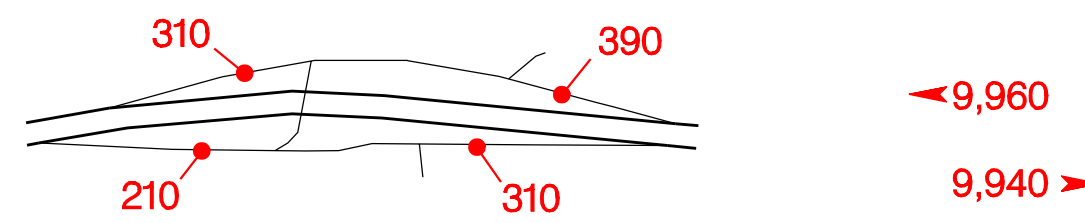


Memaloose Rest Area – Exit 72, 73

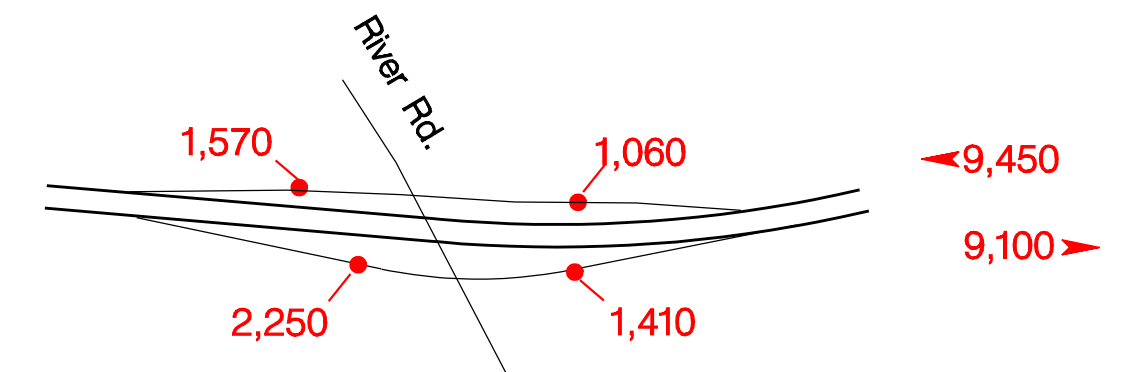


33-001
Rowena ATR
MP 75.93

Rowena – Exit 76



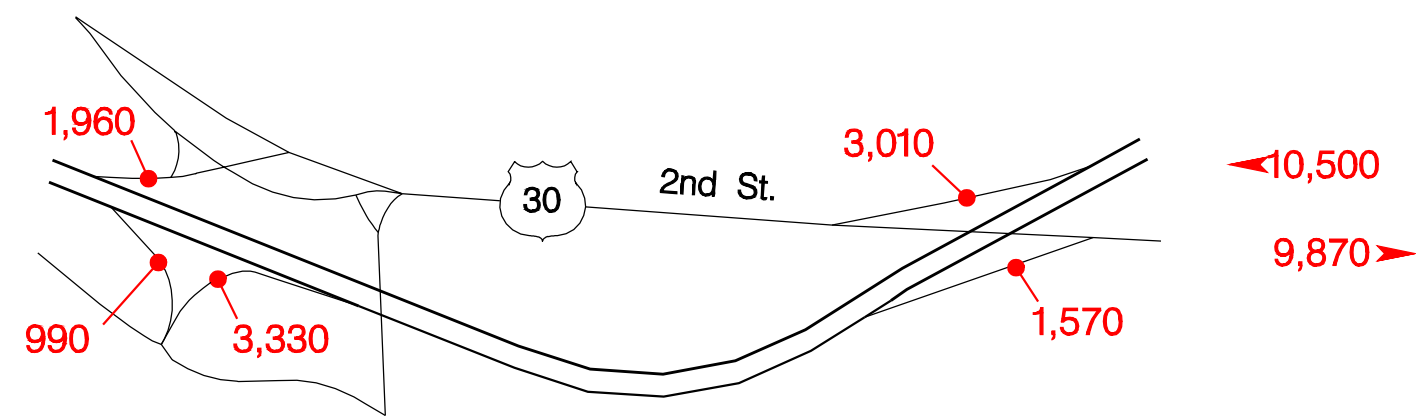
Chenowith – Exit 82



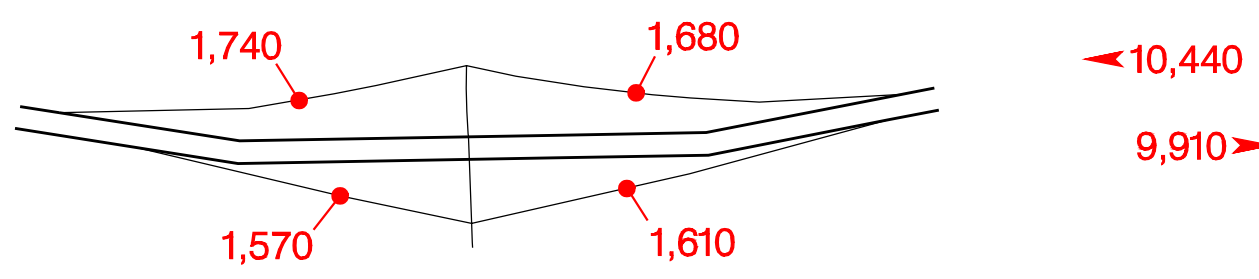
170

INTERSTATE  INTERCHANGES AND REST AREAS

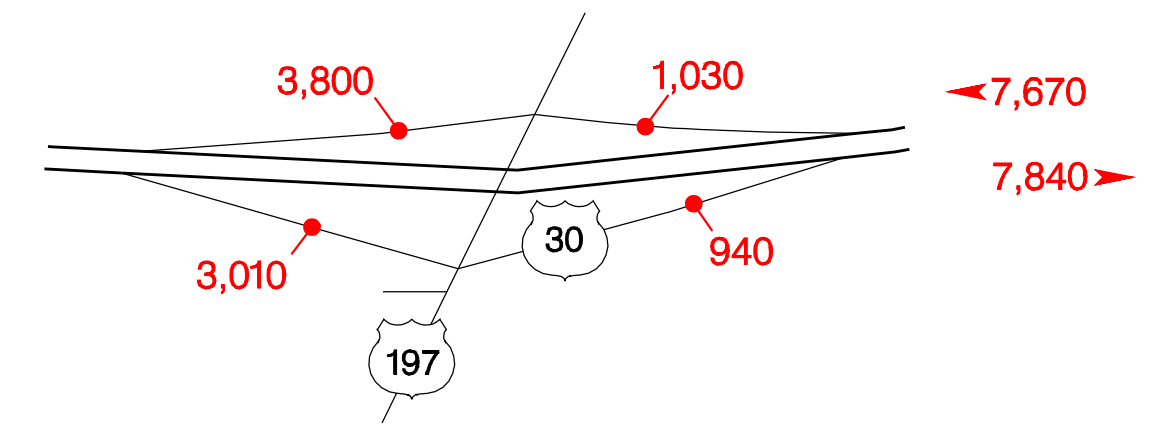
West The Dalles – Exit 83



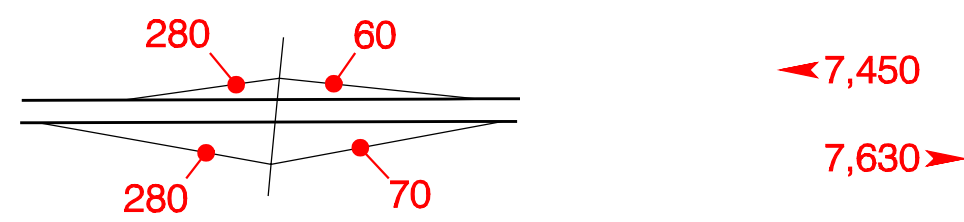
Brewery Grade – Exit 85



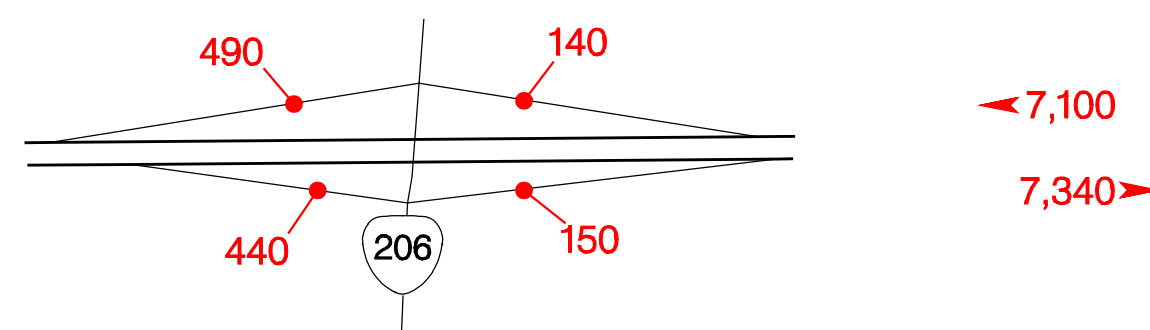
The Dalles Bridge – Exit 87



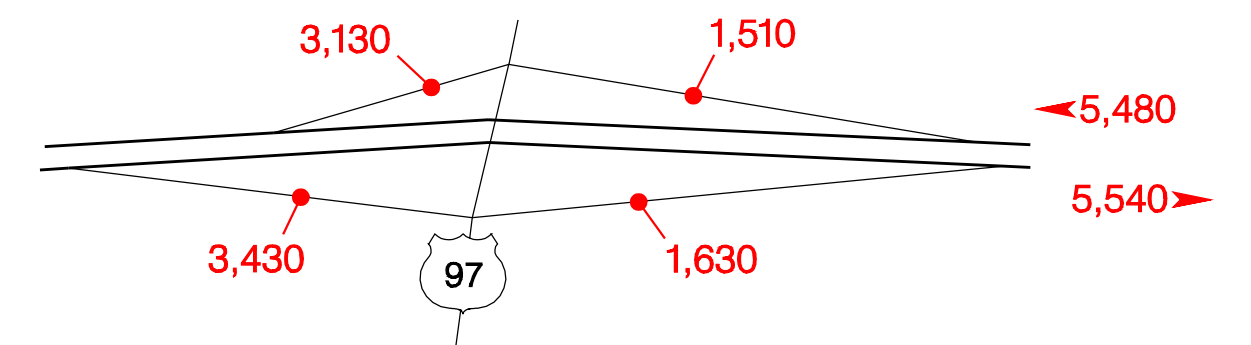
The Dalles Dam – Exit 88



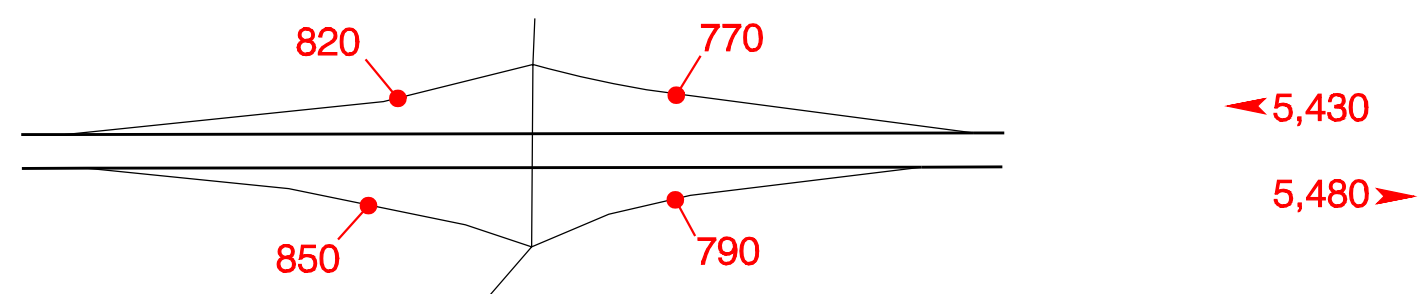
Celilo–Wasco Hwy. – Exit 97



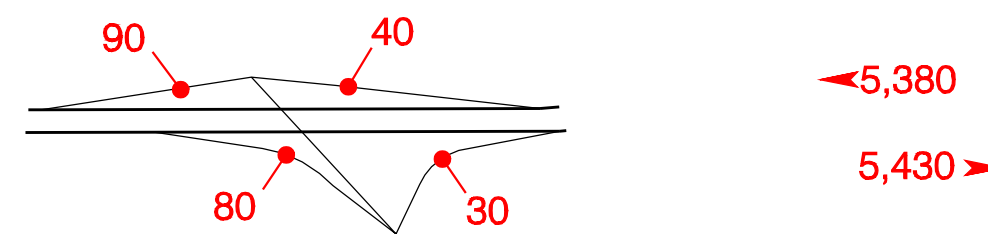
Biggs Jct. – Exit 104



Rufus – Exit 109

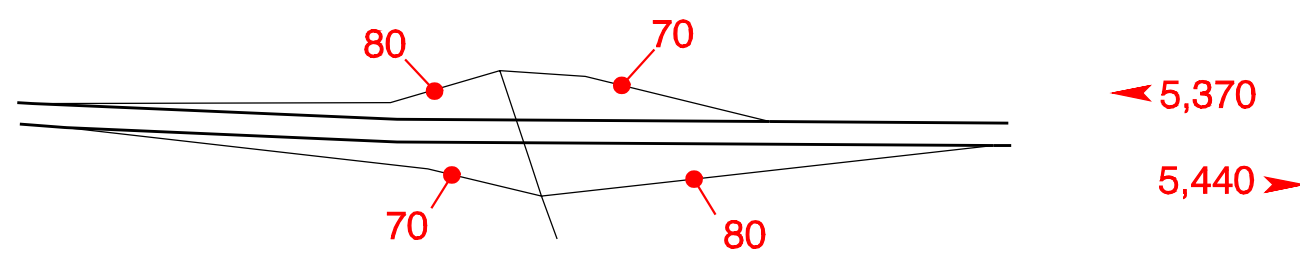


West John Day – Exit 114

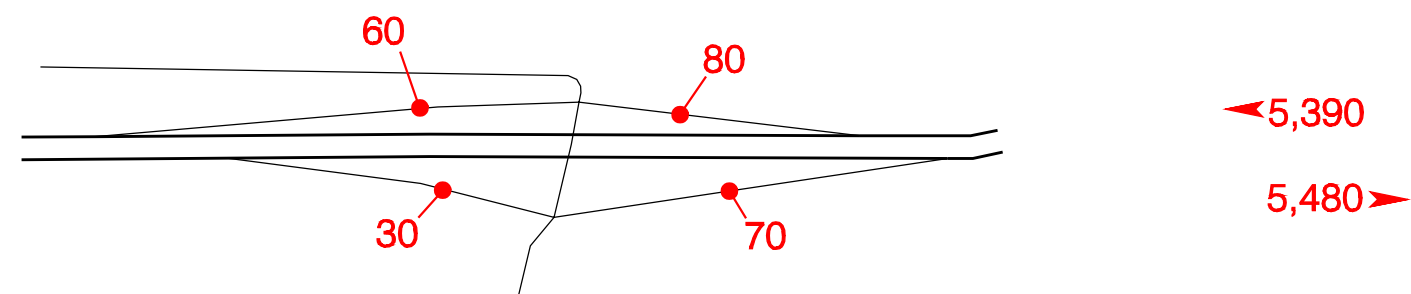


INTERSTATE  INTERCHANGES AND REST AREAS

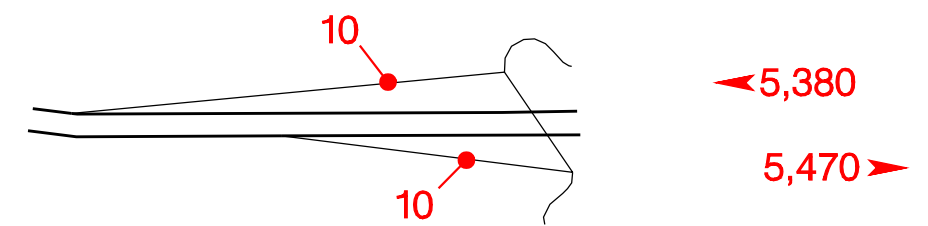
Quinton – Exit 123



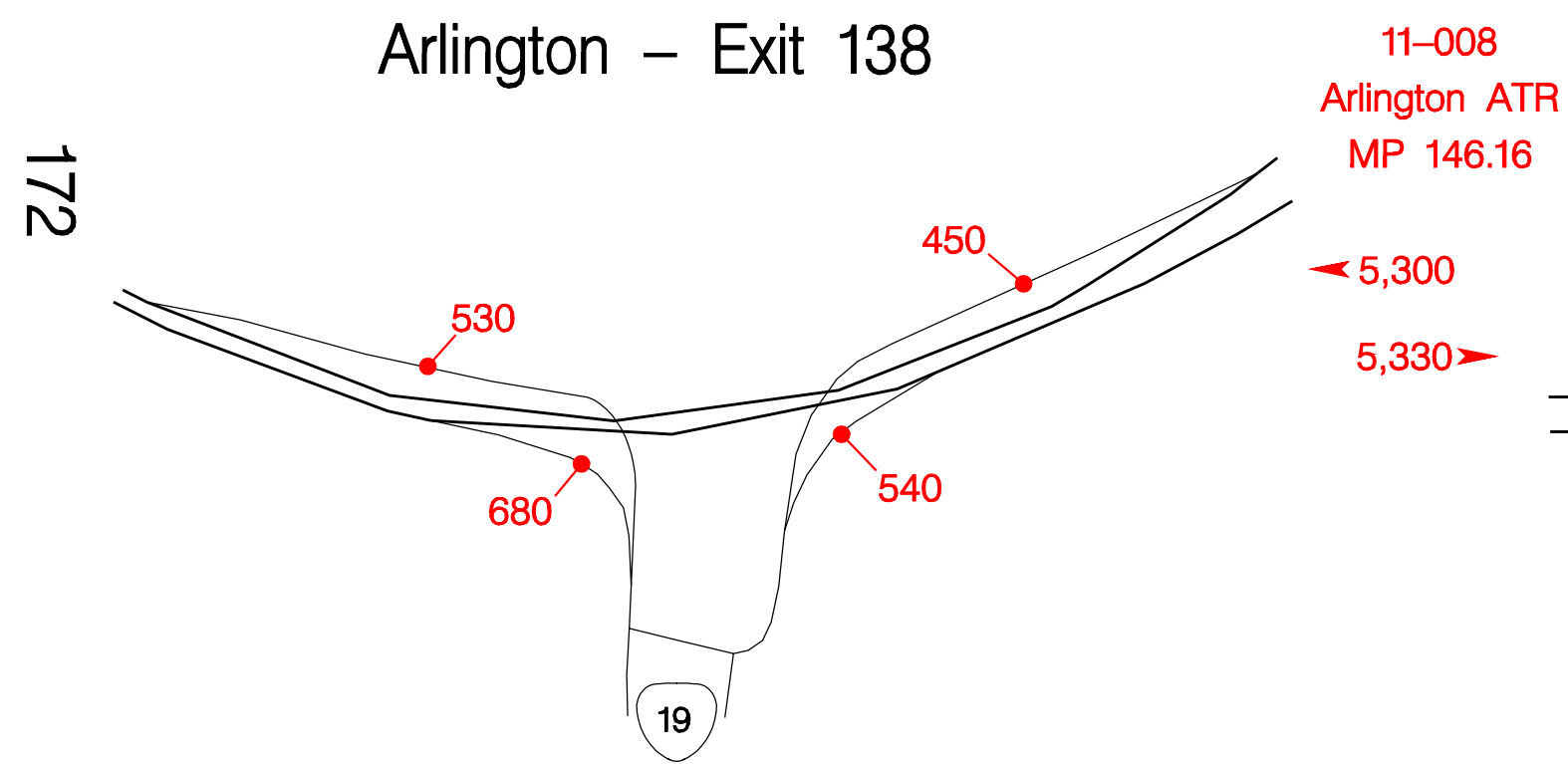
Blalock – Exit 129



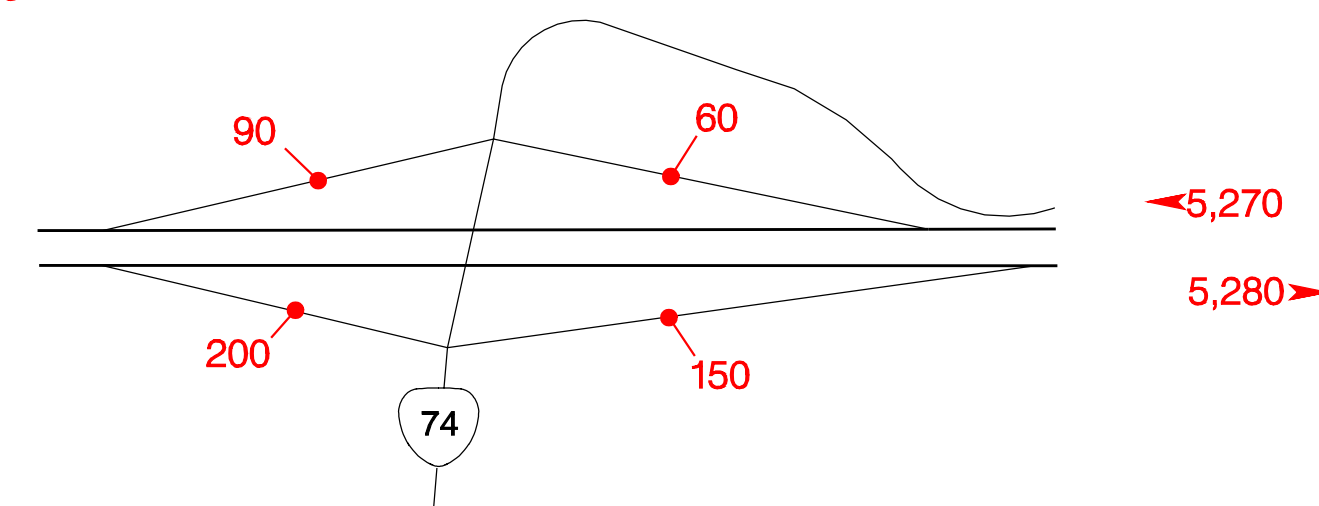
Woelpern – Exit 131



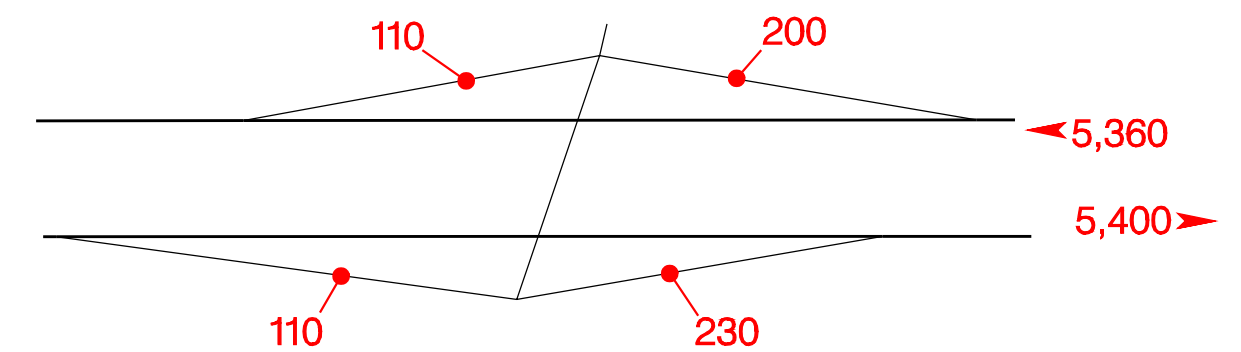
Arlington – Exit 138



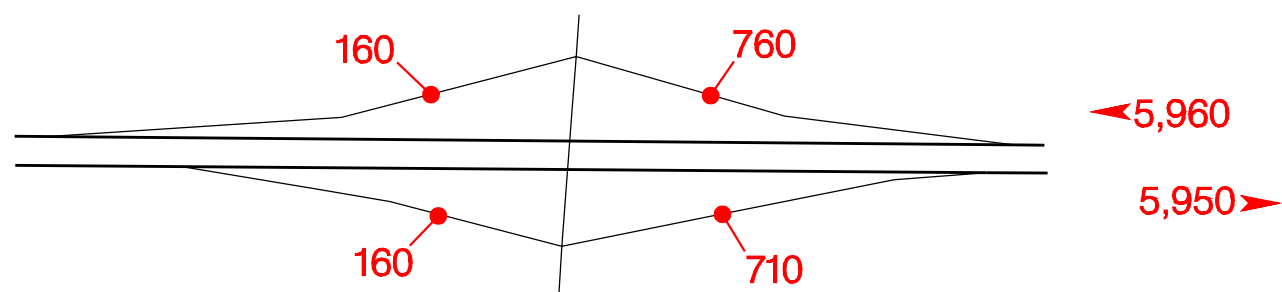
Heppner Jct. – Exit 147



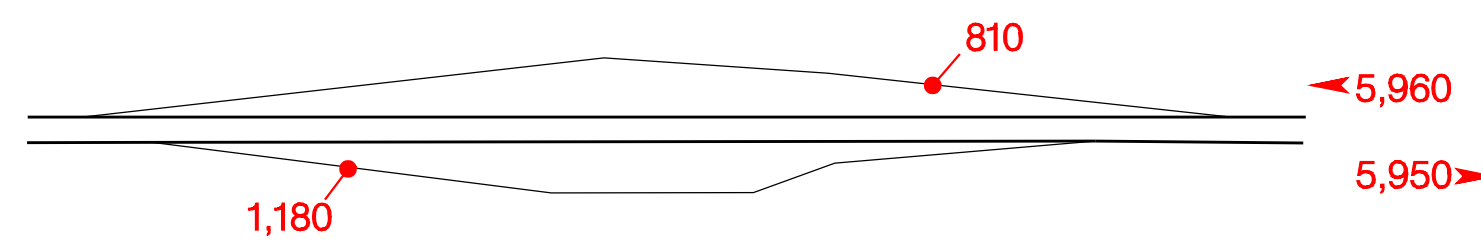
Threemile Canyon – Exit 151



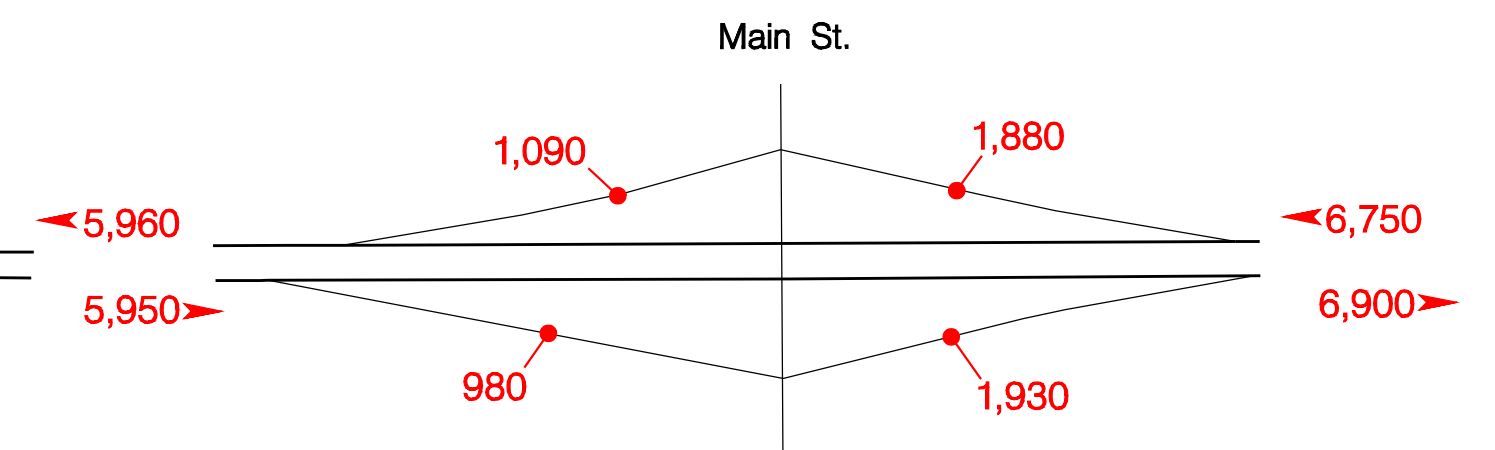
Tower Road – Exit 159



Boardman Rest Area – Exit 160

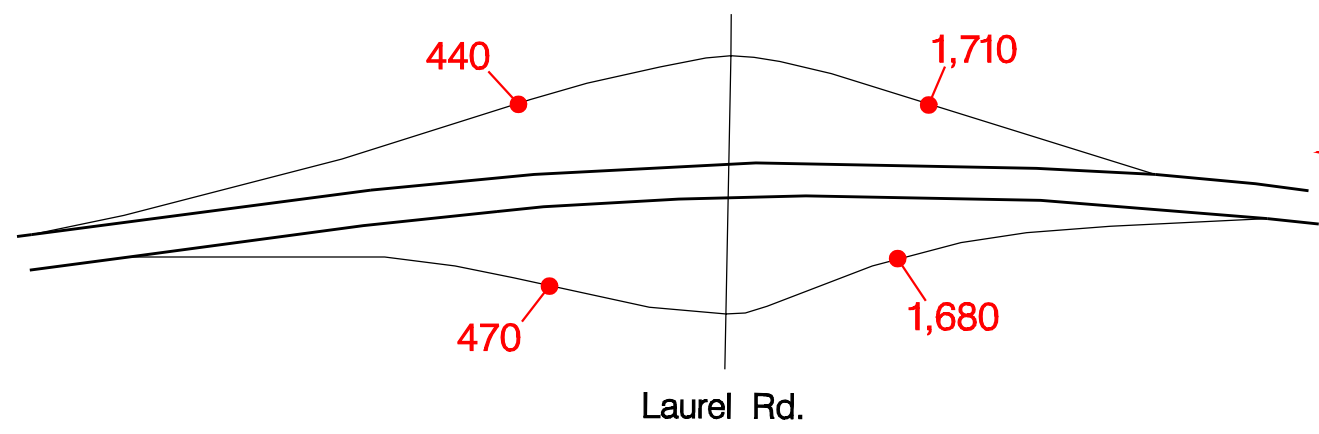


Boardman – Exit 164

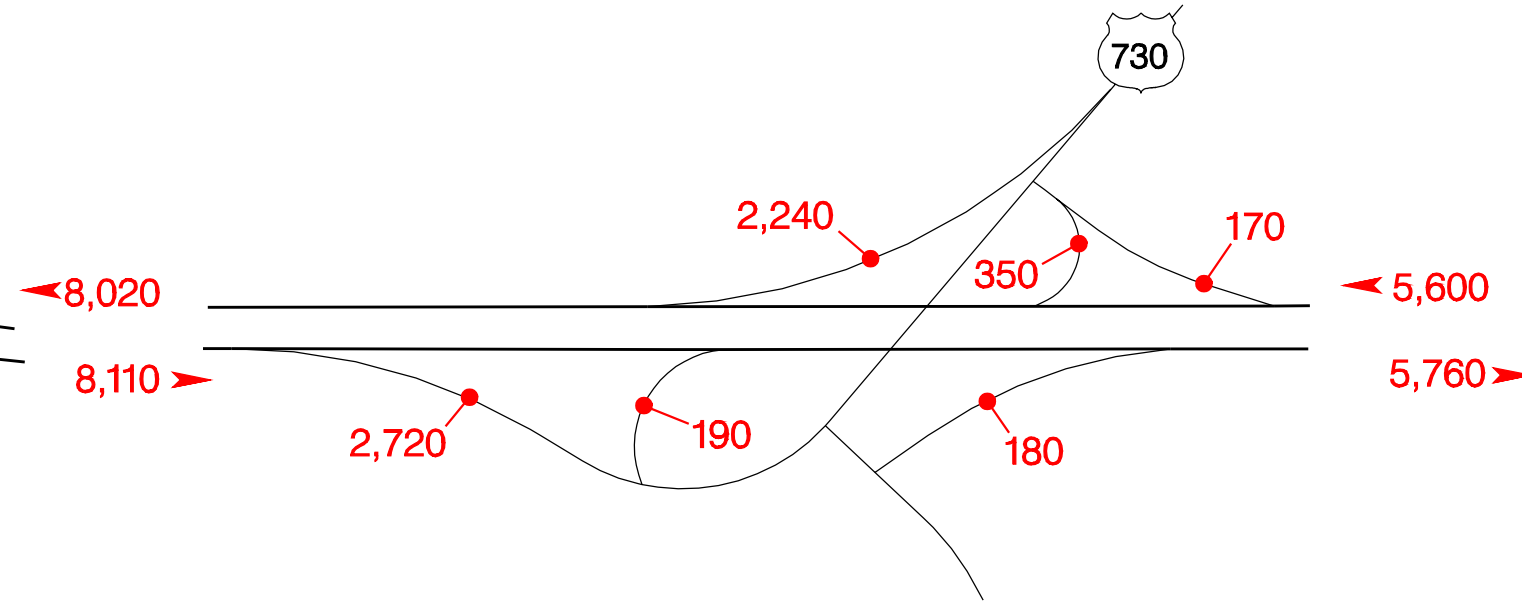


INTERSTATE INTERCHANGES AND REST AREAS

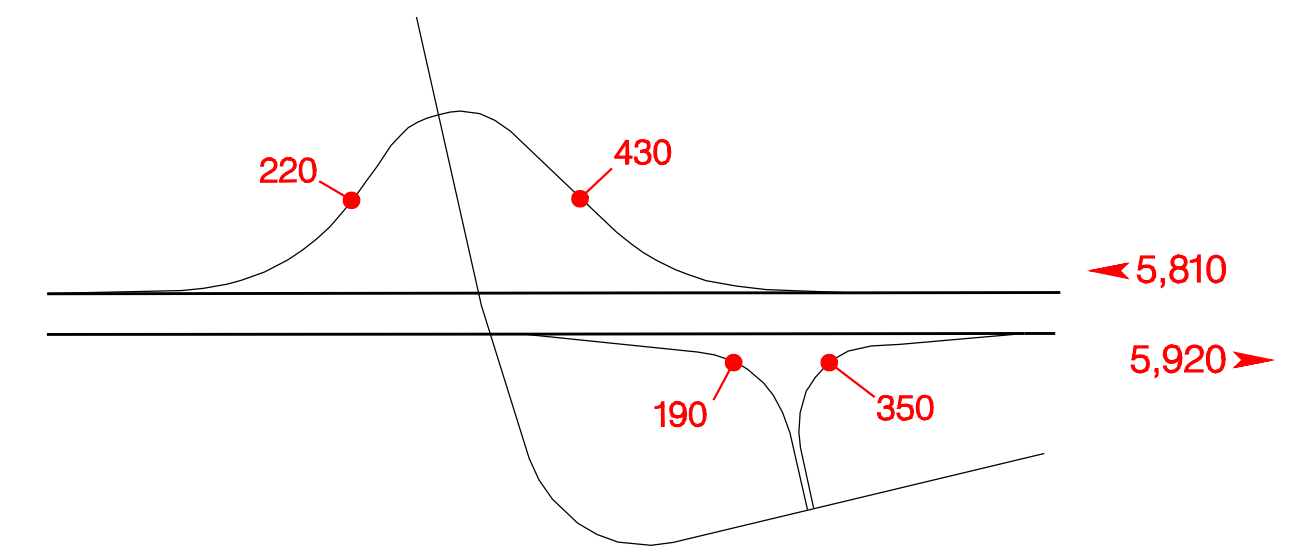
Port Of Morrow – Exit 165



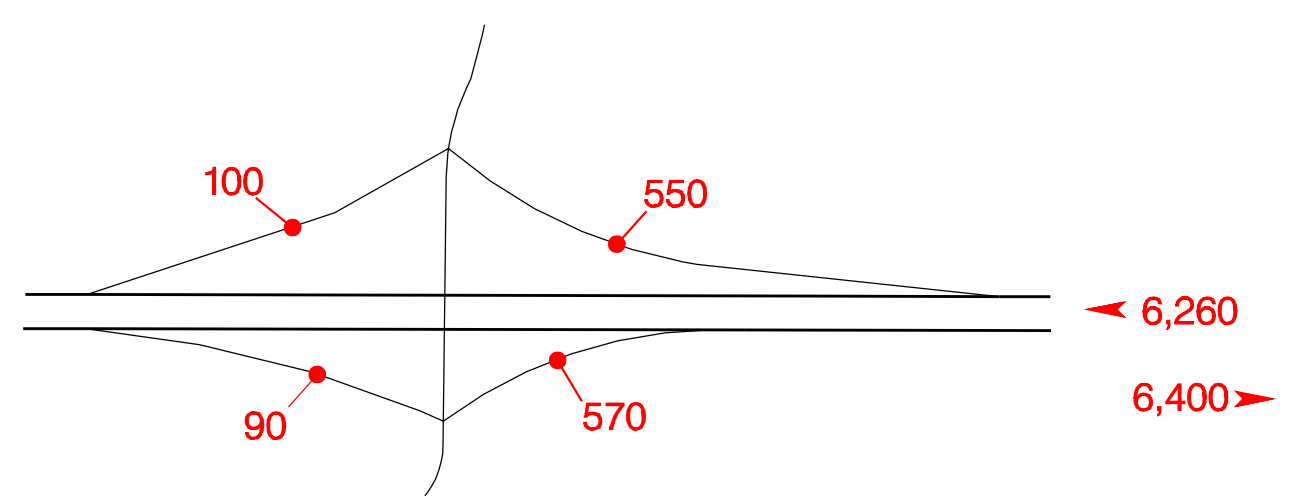
Boardman Jct. – Exit 168



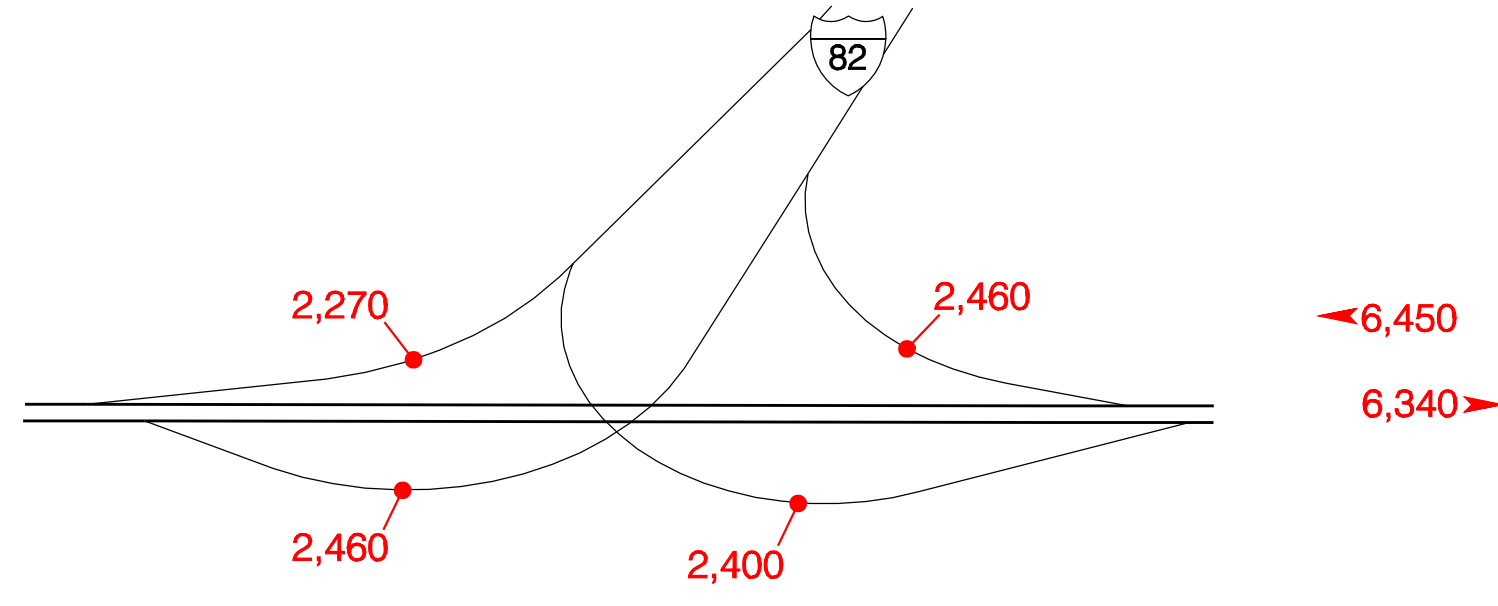
Paterson Ferry Road – Exit 171



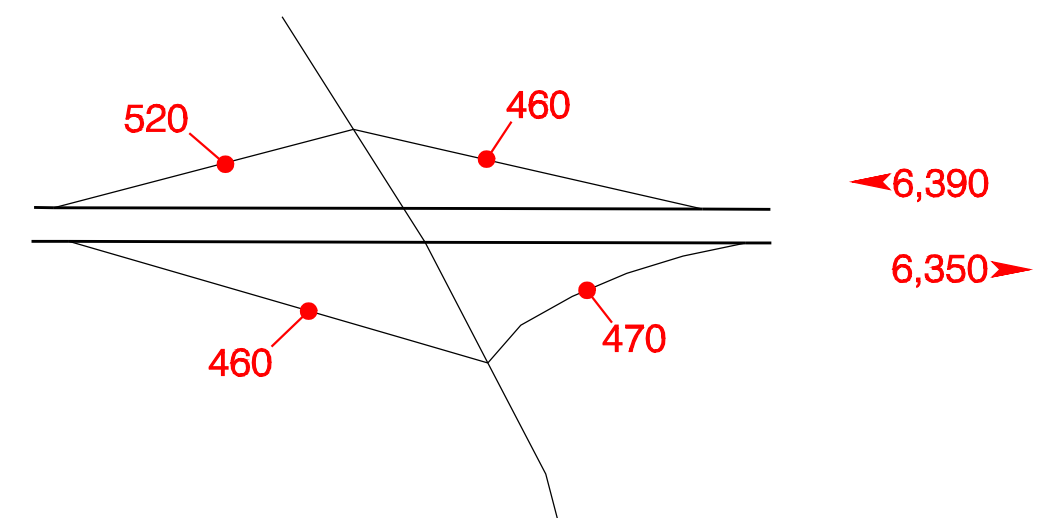
Ordnance – Exit 177



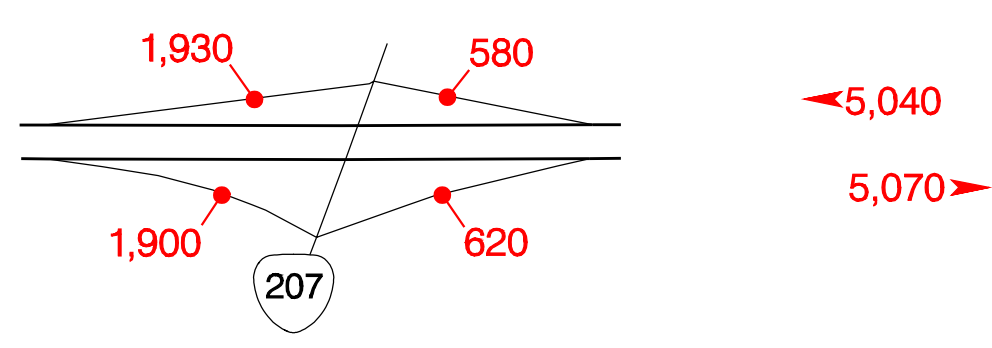
McNary Highway – Exit 179



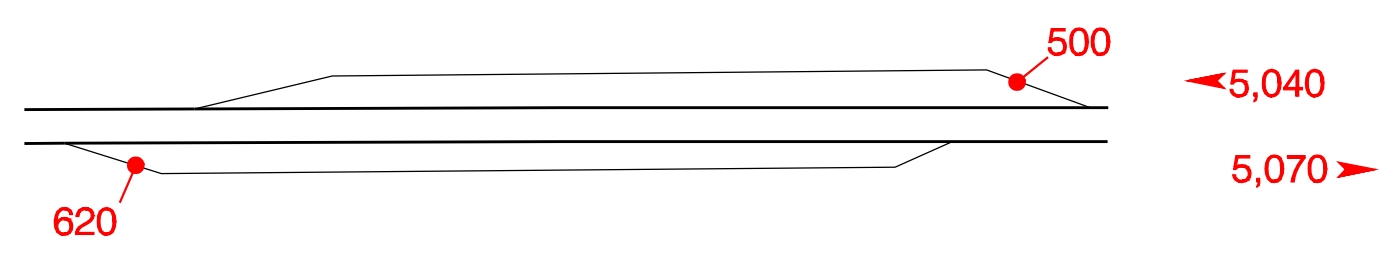
Westland Road – Exit 180



Hermiston – Exit 182



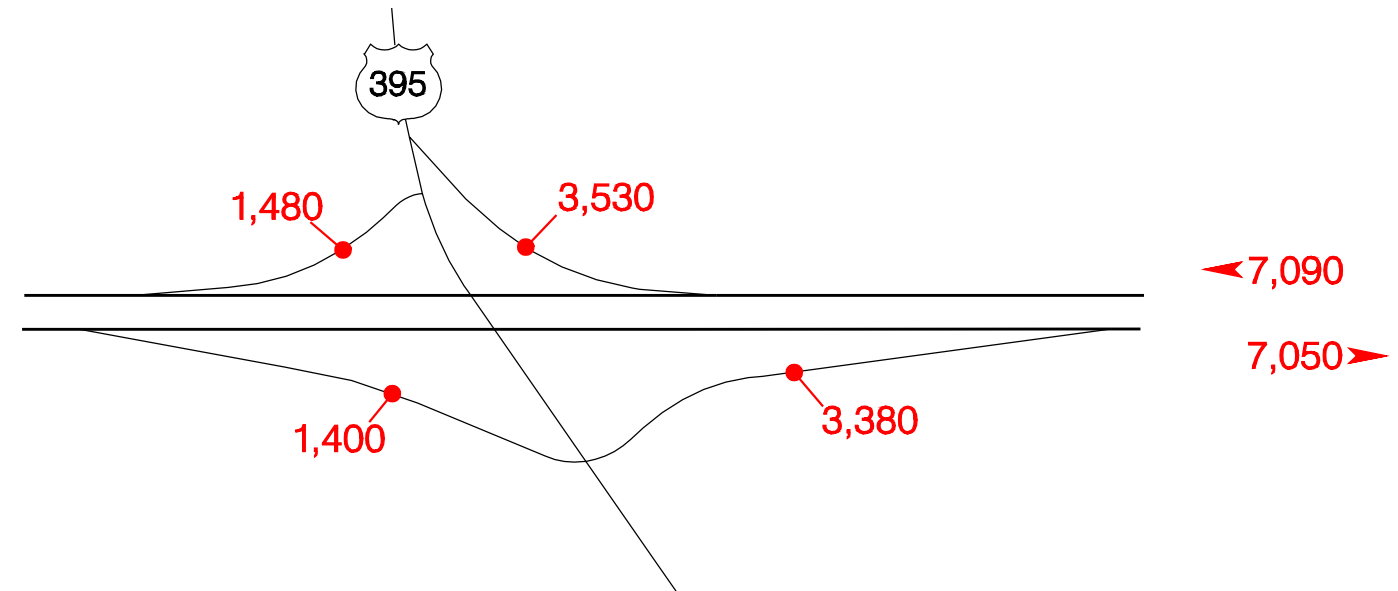
Stanfield Rest Area – Exit 186A, 186B



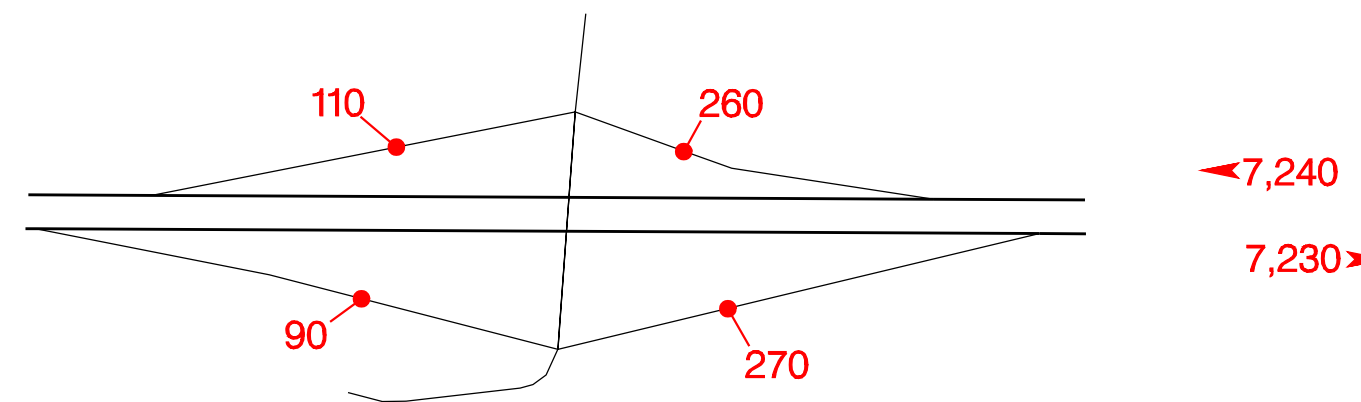
173

INTERSTATE  INTERCHANGES AND REST AREAS

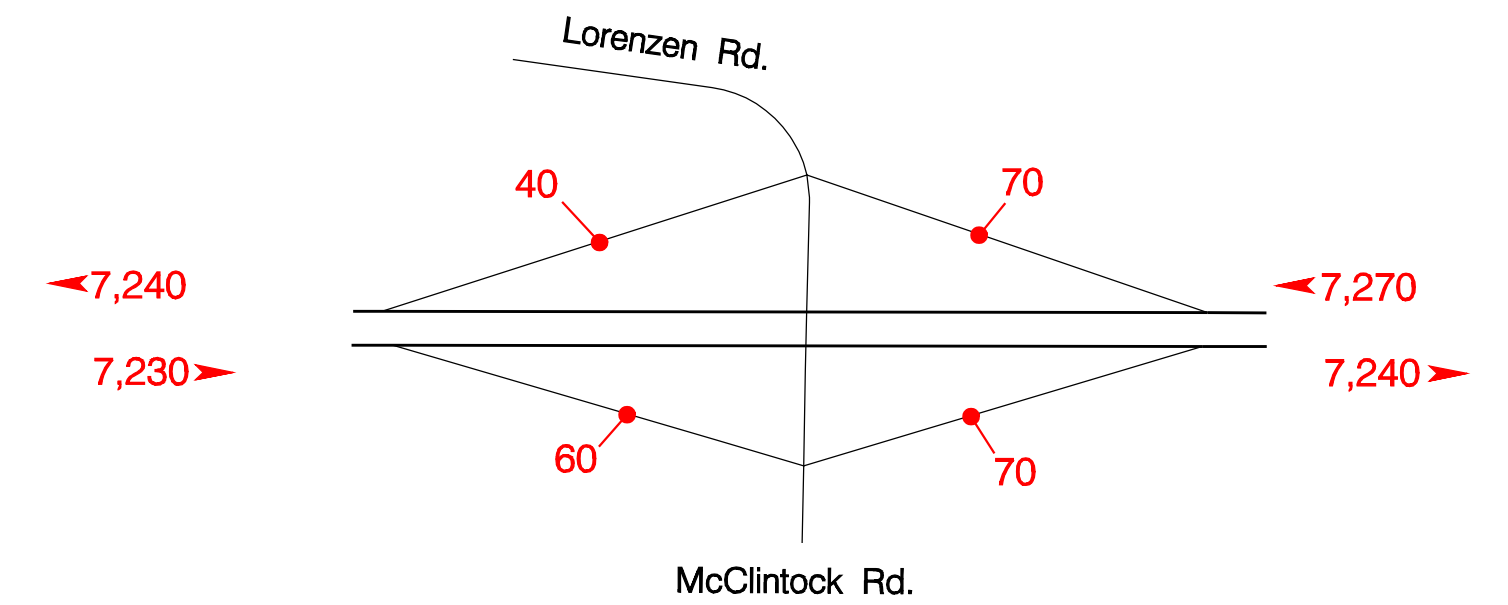
Stanfield Jct. – Exit 188



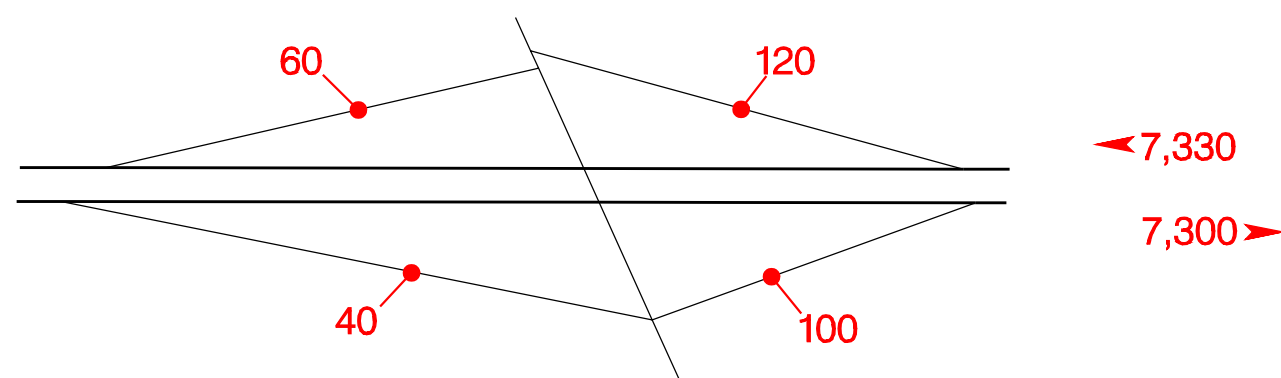
Echo Jct. – Exit 193



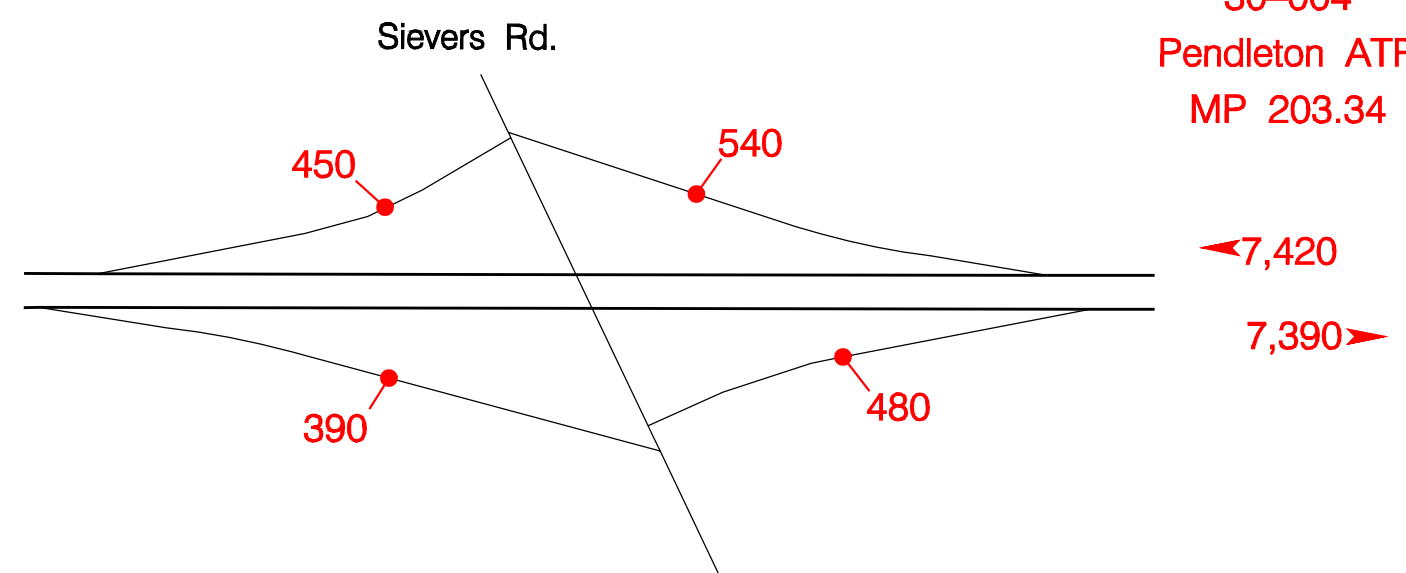
Rew Elevator – Exit 198



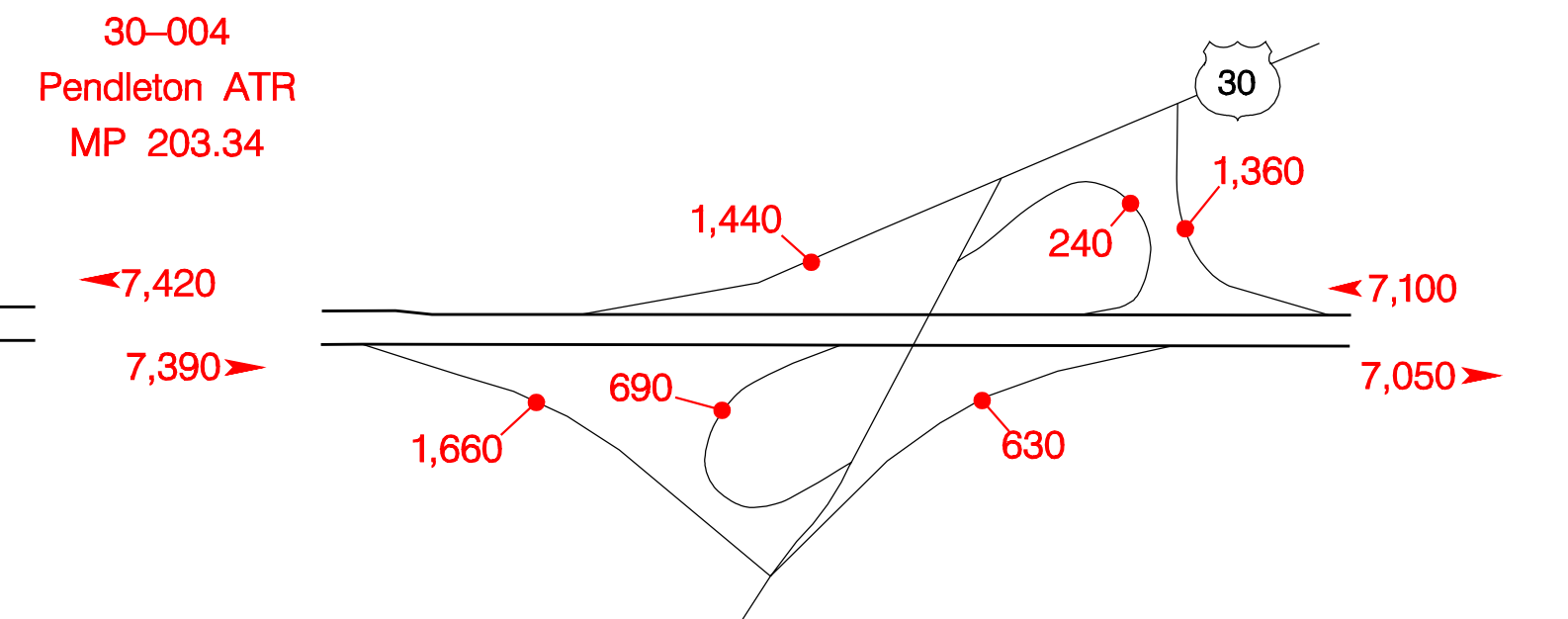
Yoakum Road – Exit 199



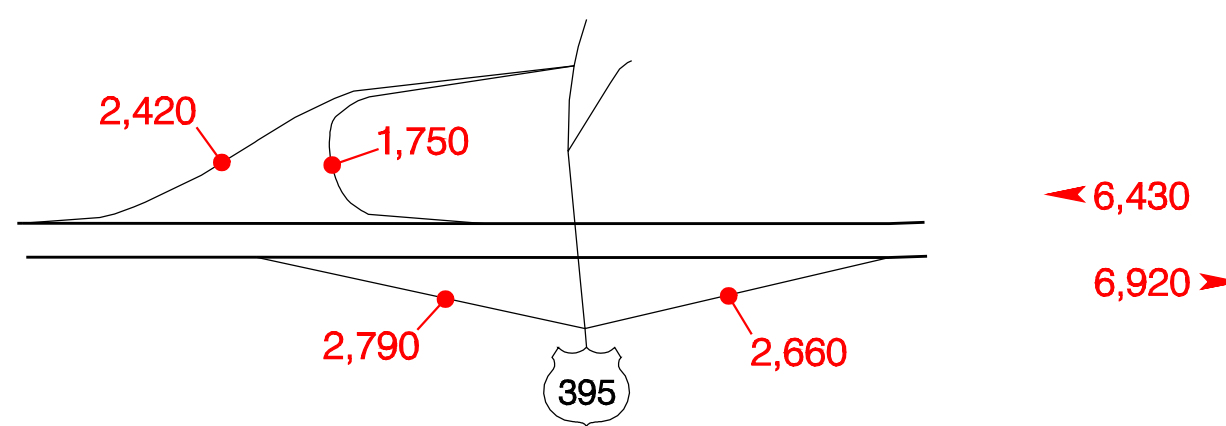
Barnhart – Exit 202



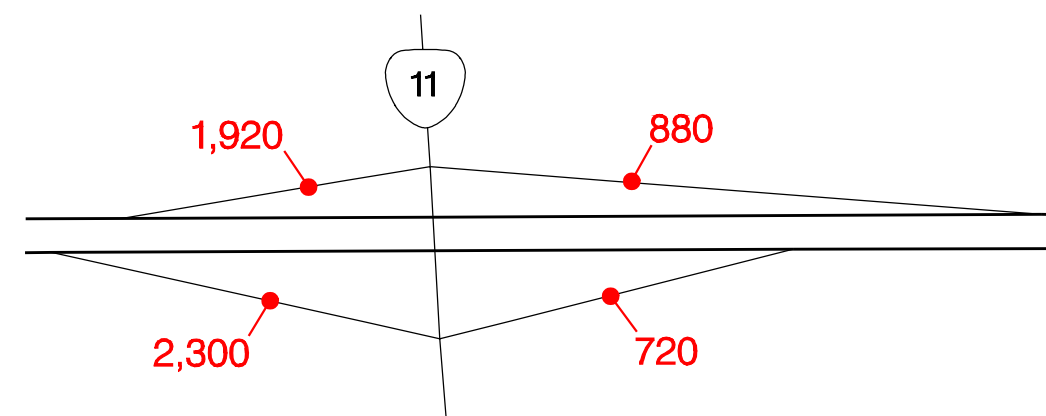
West Pendleton – Exit 207



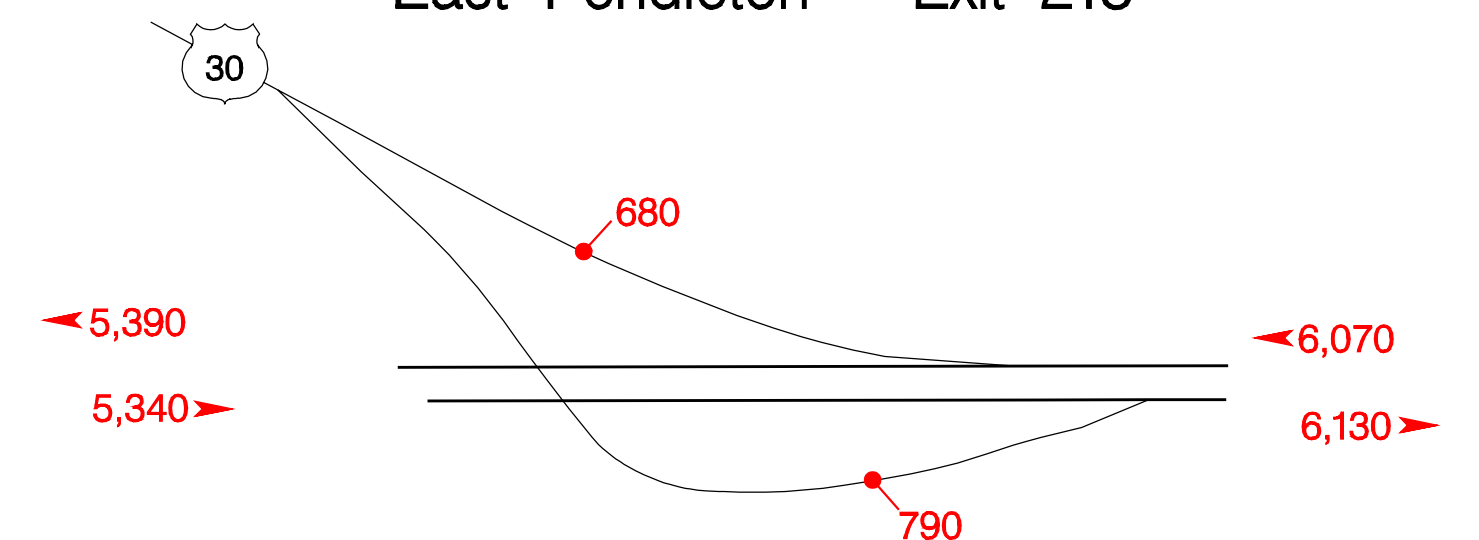
Emigrant Avenue – Exit 209



South Pendleton – Exit 211

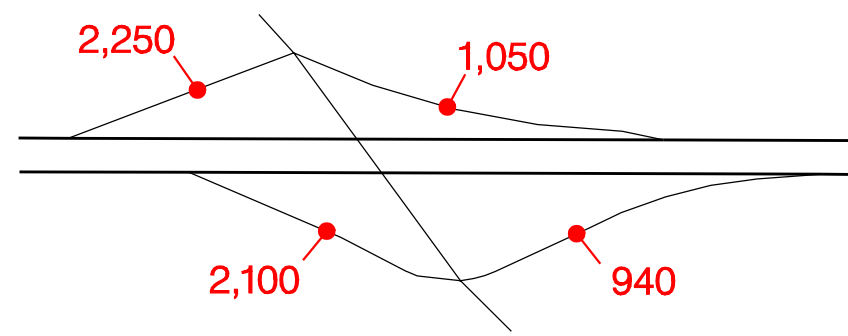


East Pendleton – Exit 213

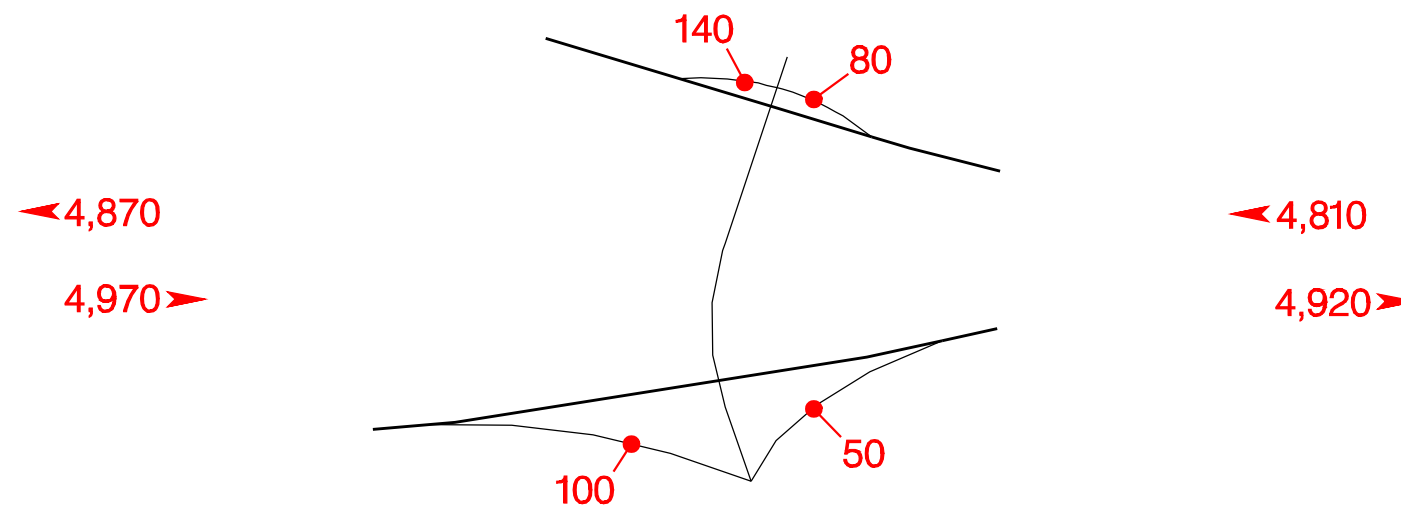


INTERSTATE  INTERCHANGES AND REST AREAS

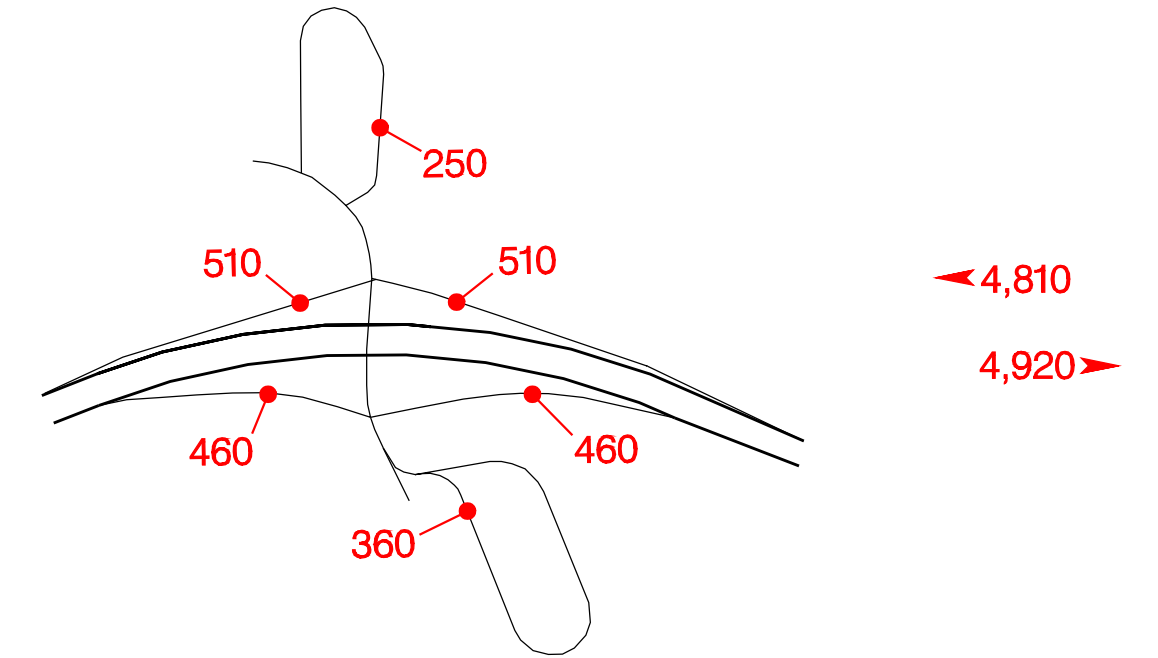
Mission Jct. – Exit 215



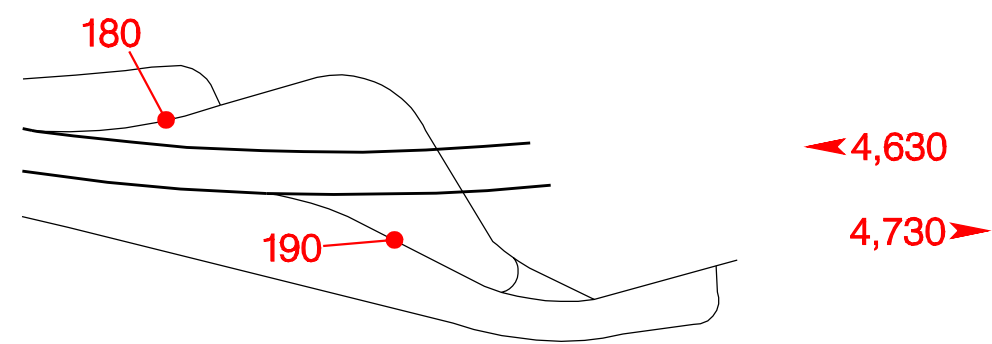
Emigrant Hill – Exit 224



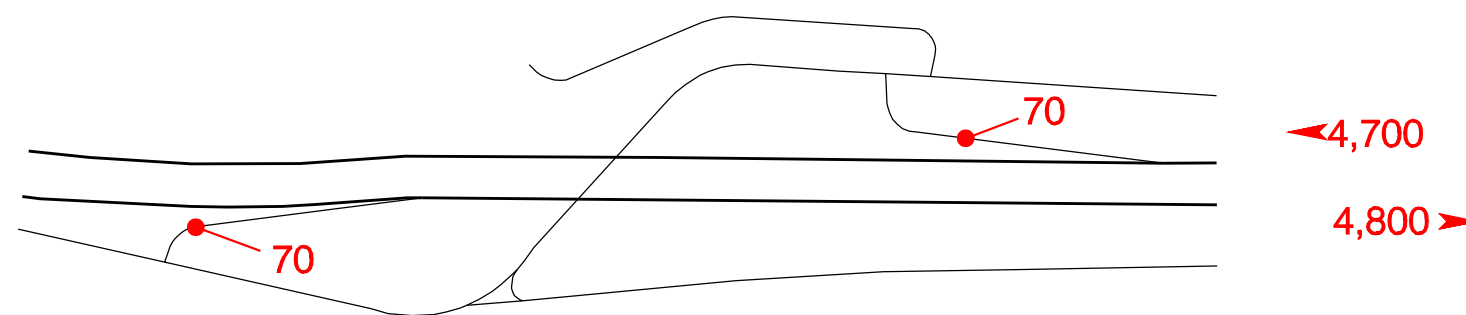
Deadman's Pass – Exit 228



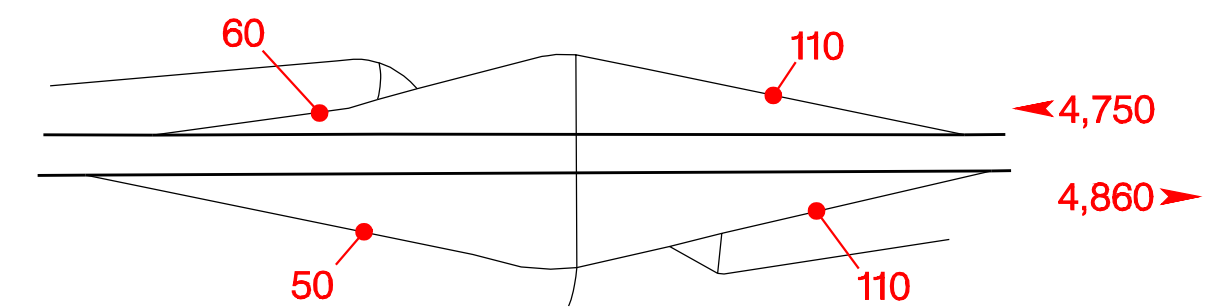
West Emigrant Park – Exit 233



East Emigrant Park – Exit 235



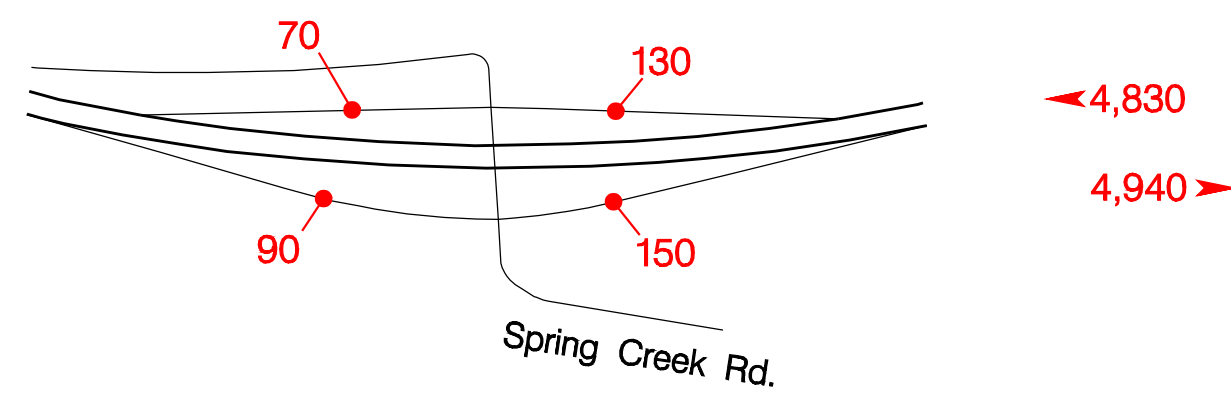
Meacham – Exit 238



Kamela – Exit 243

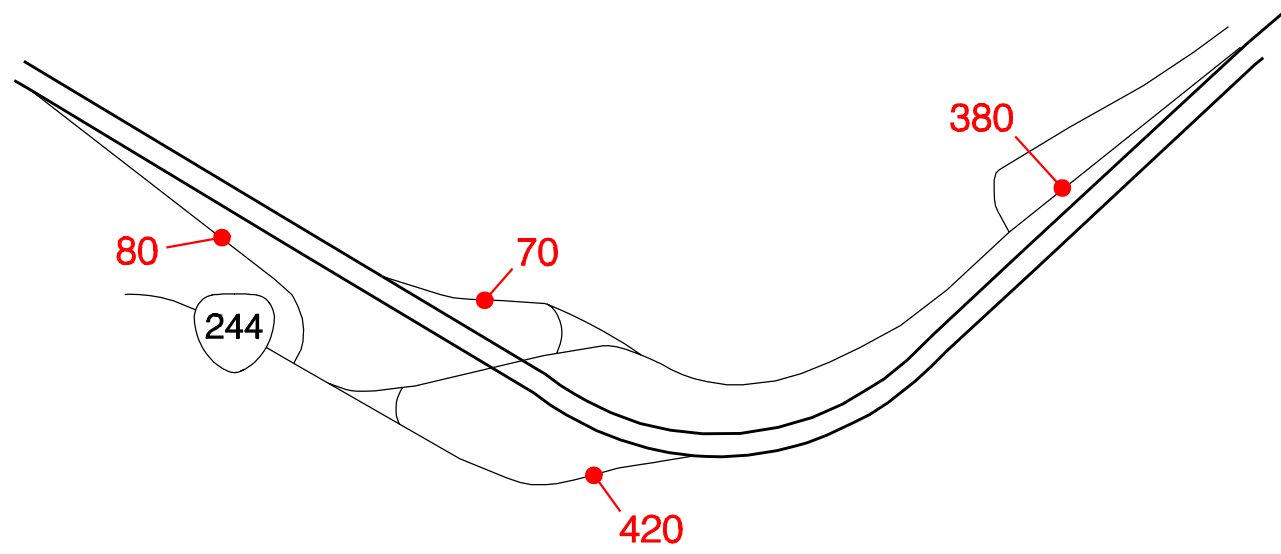


Glover – Exit 248

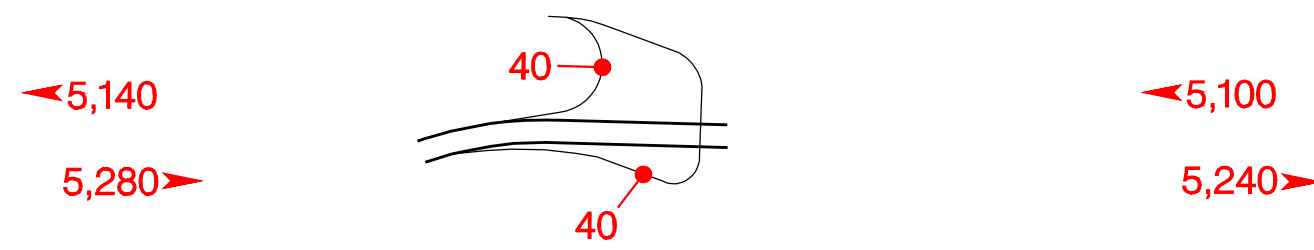


INTERSTATE INTERCHANGES AND REST AREAS

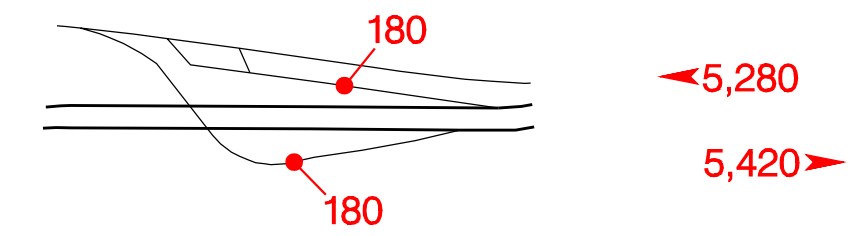
Ukiah–Hilgard – Exit 252



Upper Perry – Exit 256

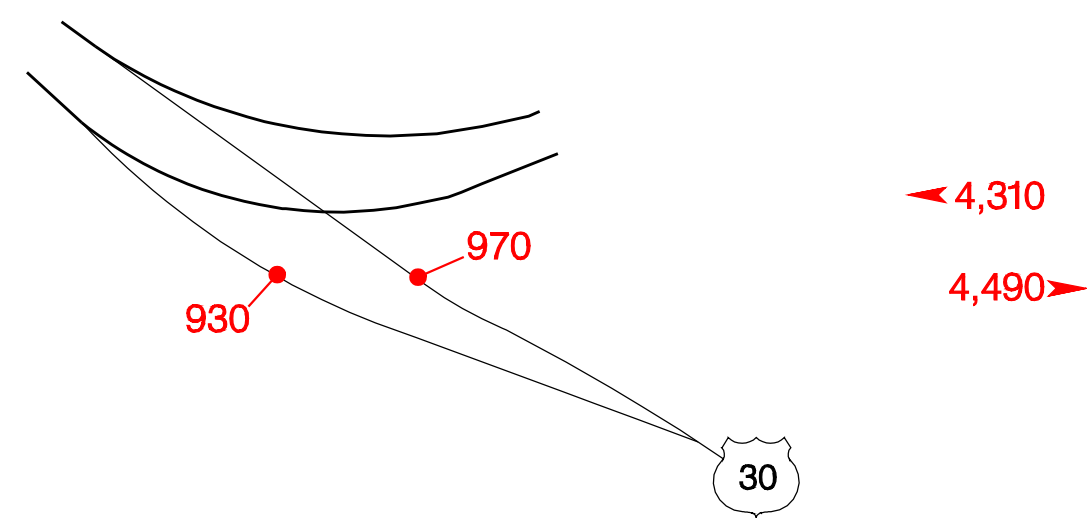


Lower Perry – Exit 257

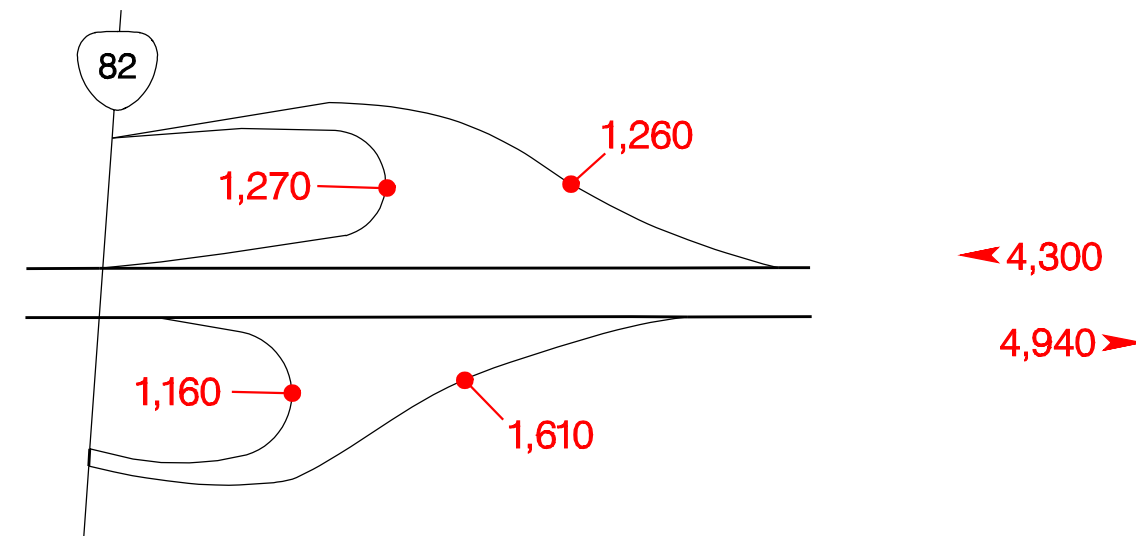


North LaGrande – Exit 259

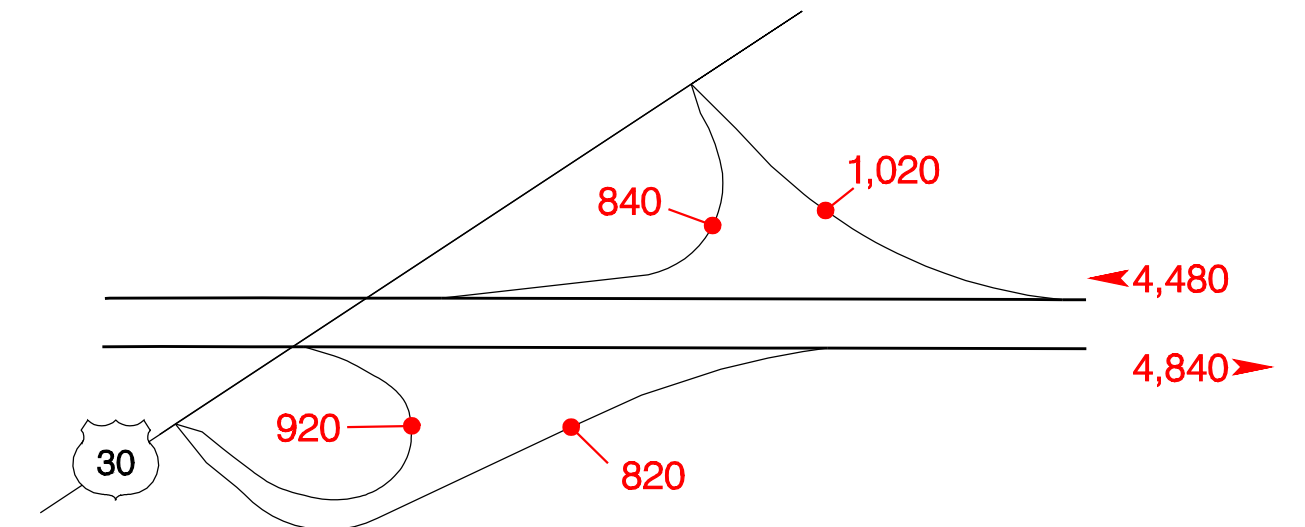
176



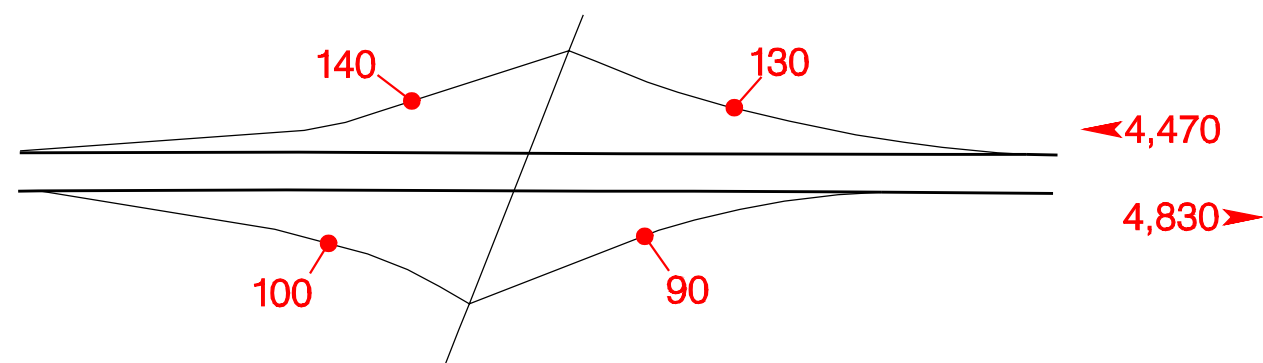
Wallowa Lake – Exit 261



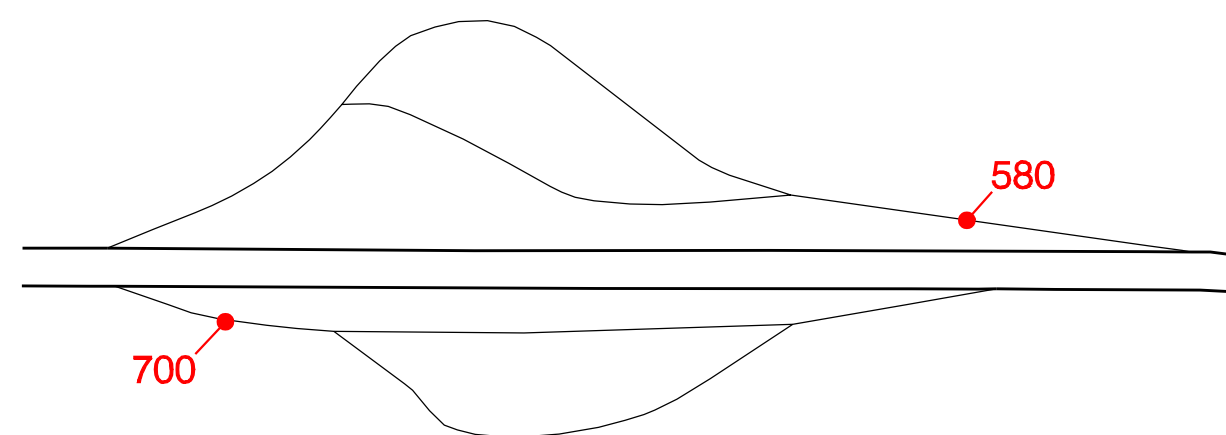
South LaGrande – Exit 264



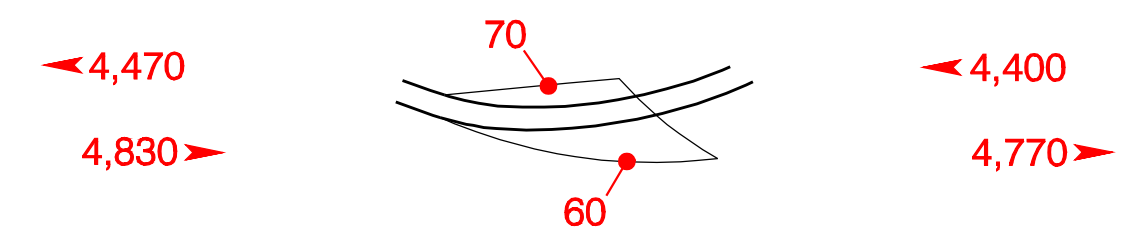
Foothill Road – Exit 268A



Ladd Canyon Rest Area – Exit 268B

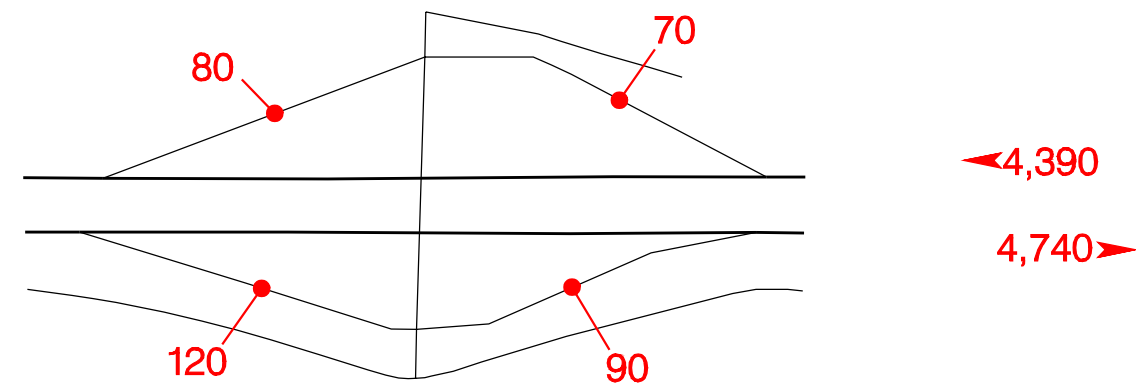


Ladd Creek – Exit 270

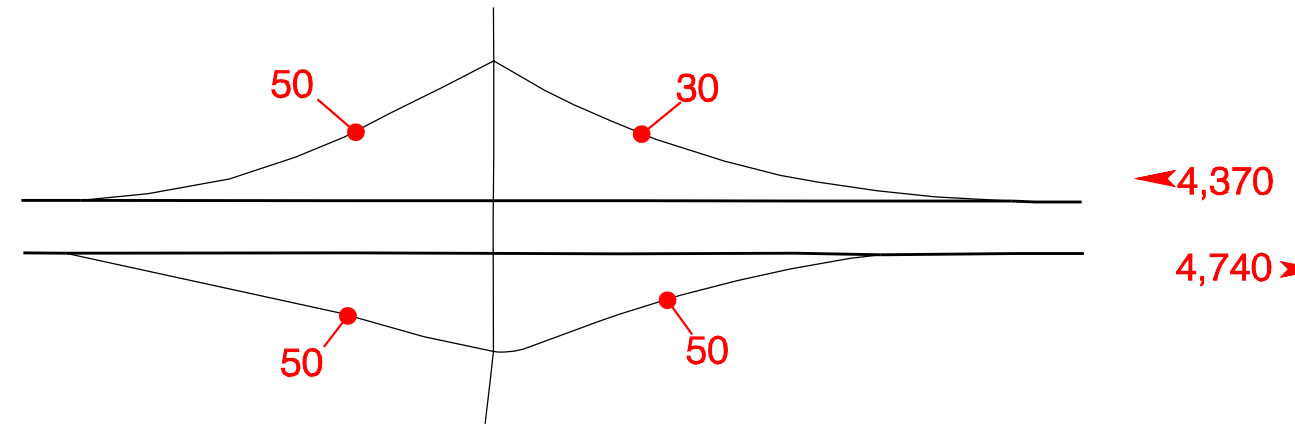


INTERSTATE  INTERCHANGES AND REST AREAS

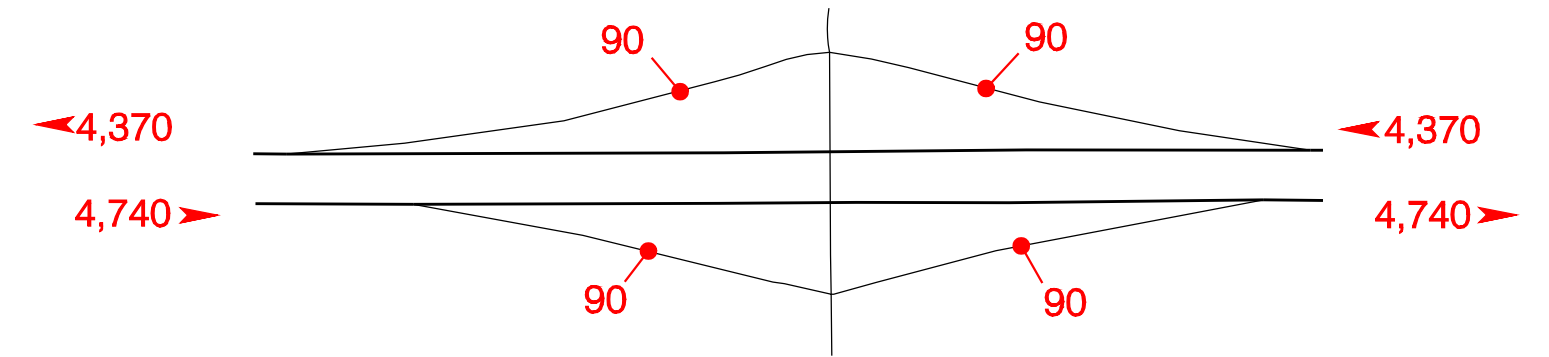
Ladd Canyon – Exit 273



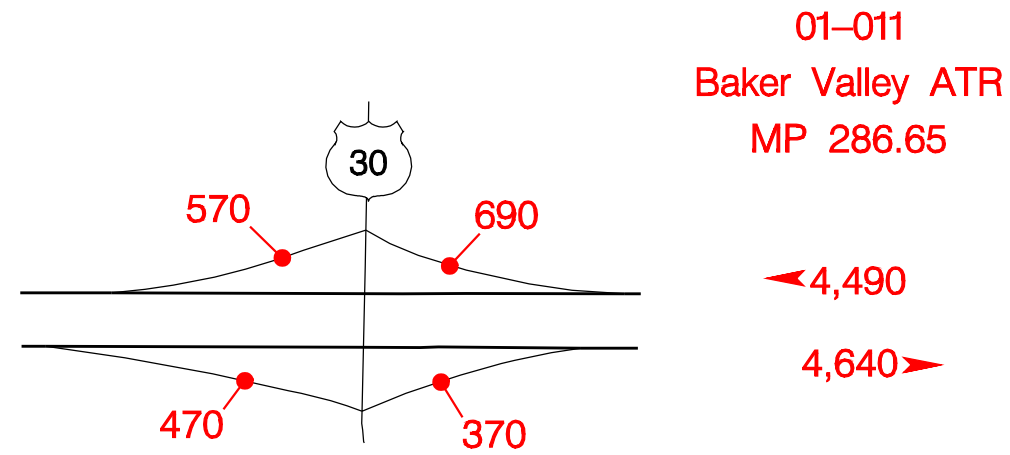
Clover Creek – Exit 278



Wolf Creek – Exit 283

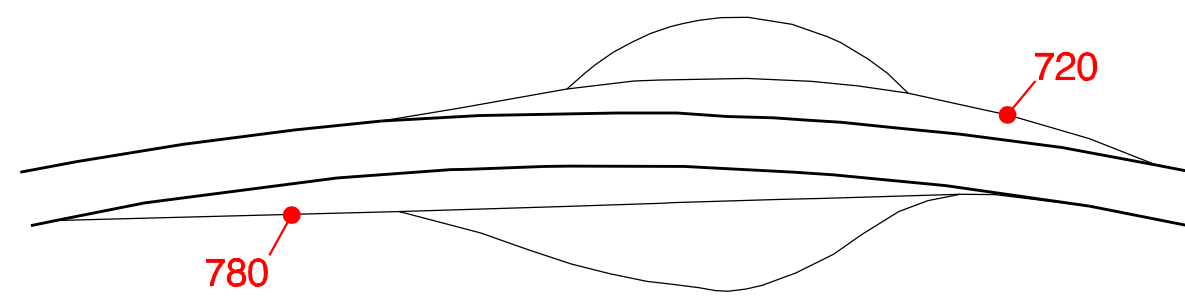


North Powder – Exit 285

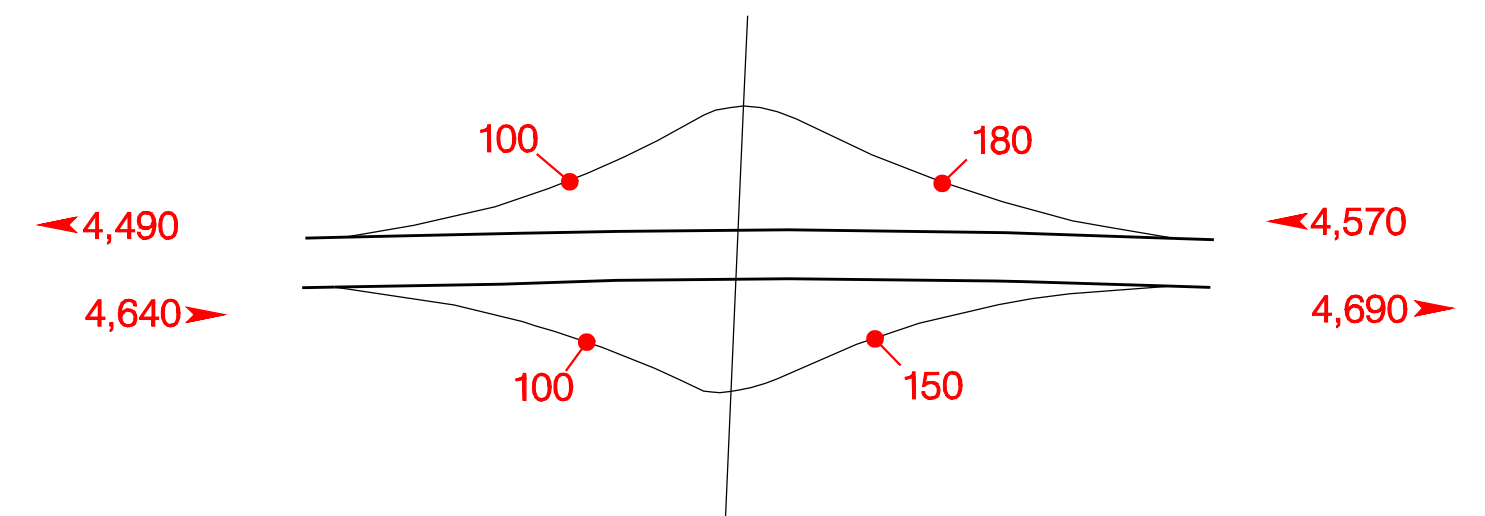


01-011
Baker Valley ATR
MP 286.65

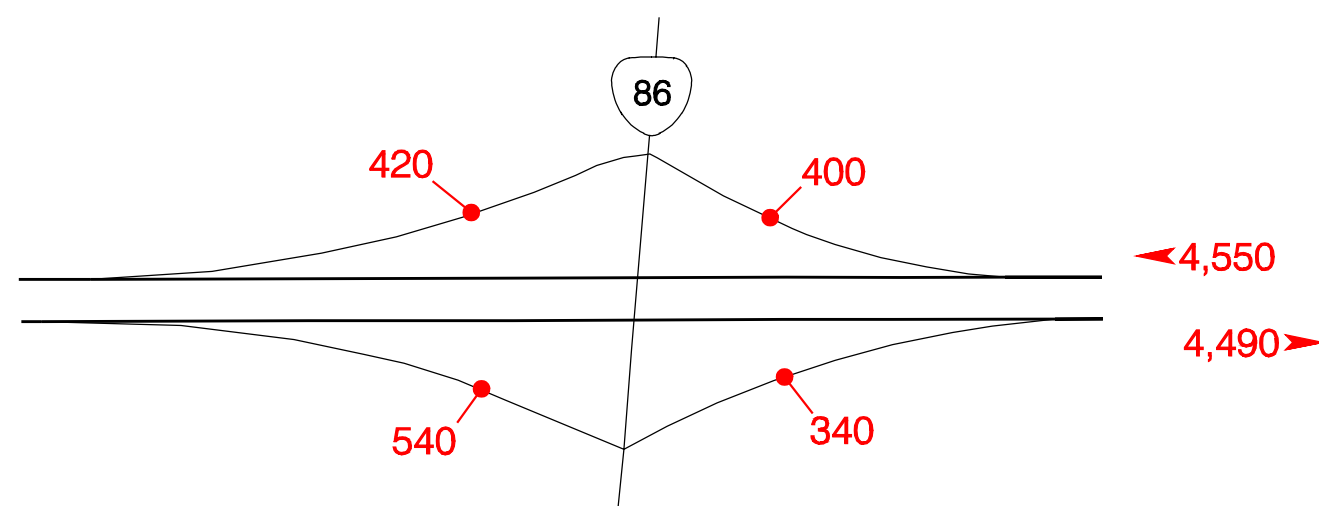
Baker Valley Rest Area – Exit 294



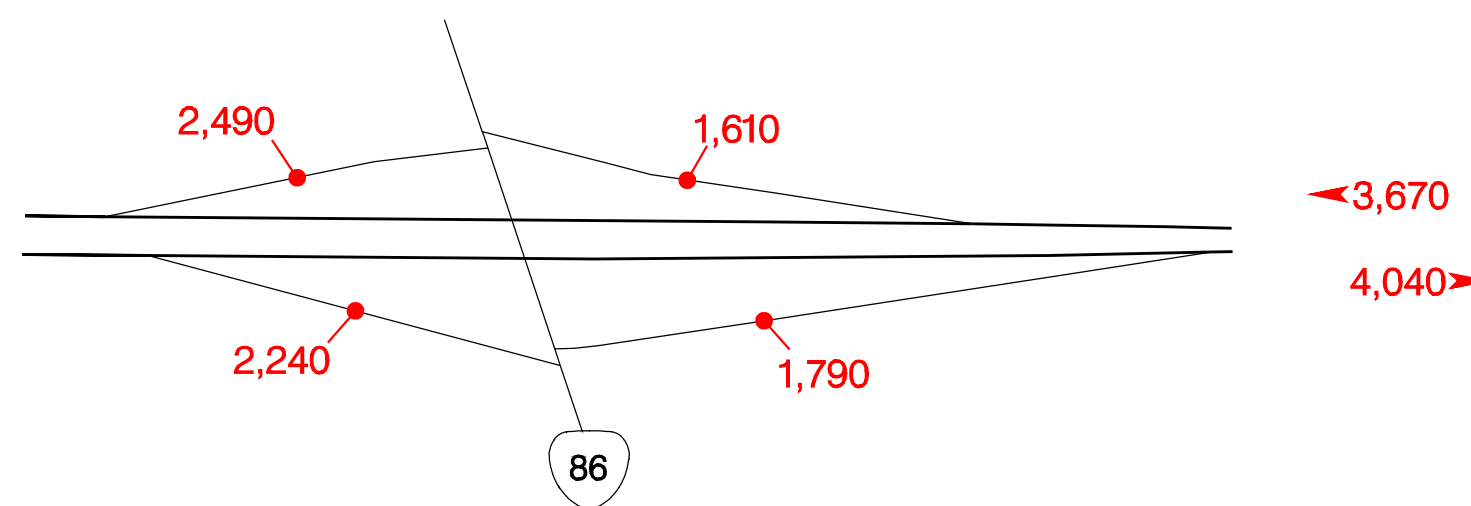
Chandler Lane – Exit 298



Richland – Exit 302

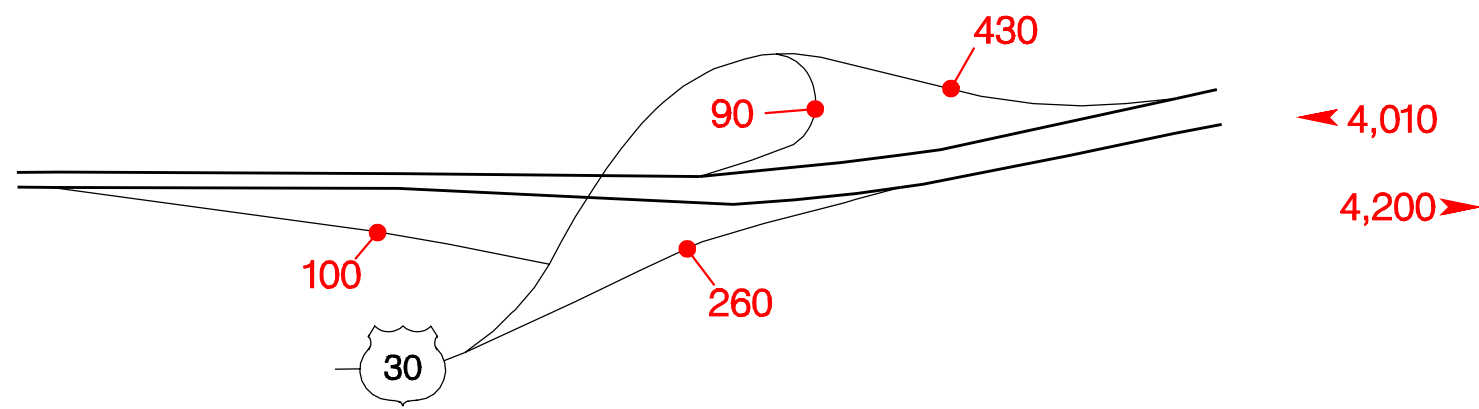


Campbell Street – Exit 304

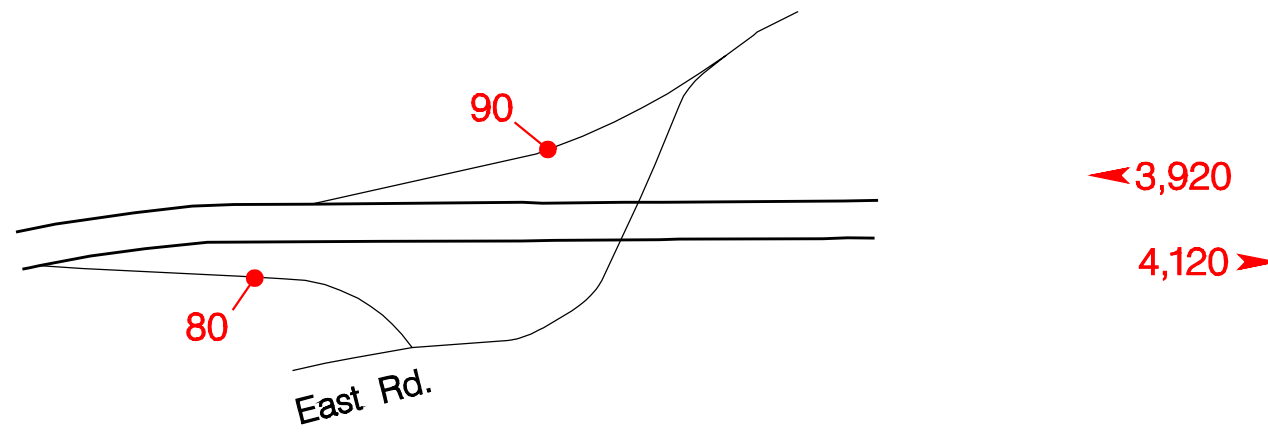


INTERSTATE  INTERCHANGES AND REST AREAS

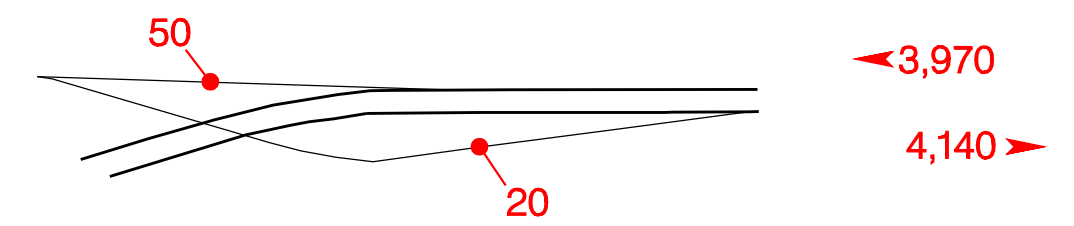
South Baker – Exit 306



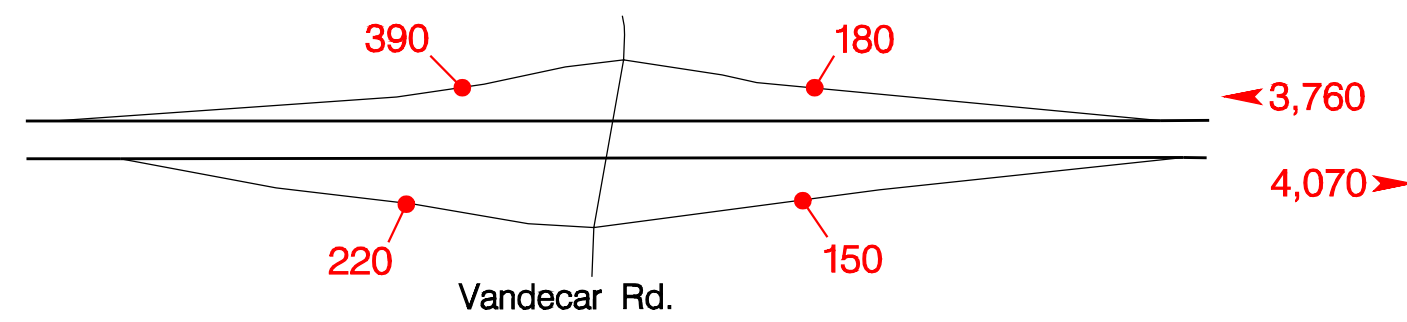
Encina – Exit 313



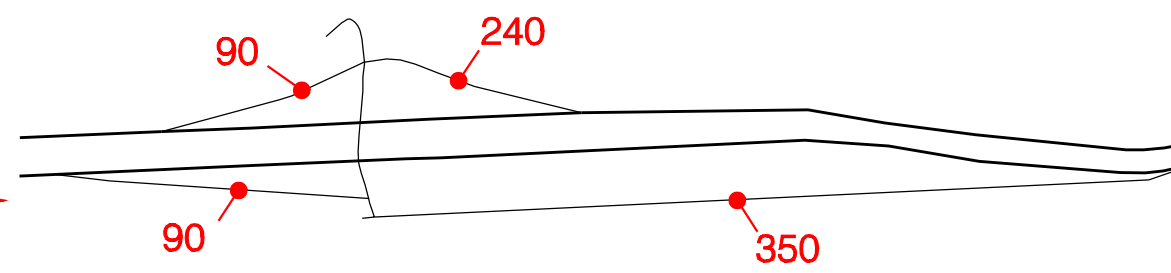
Pleasant Valley – Exit 317



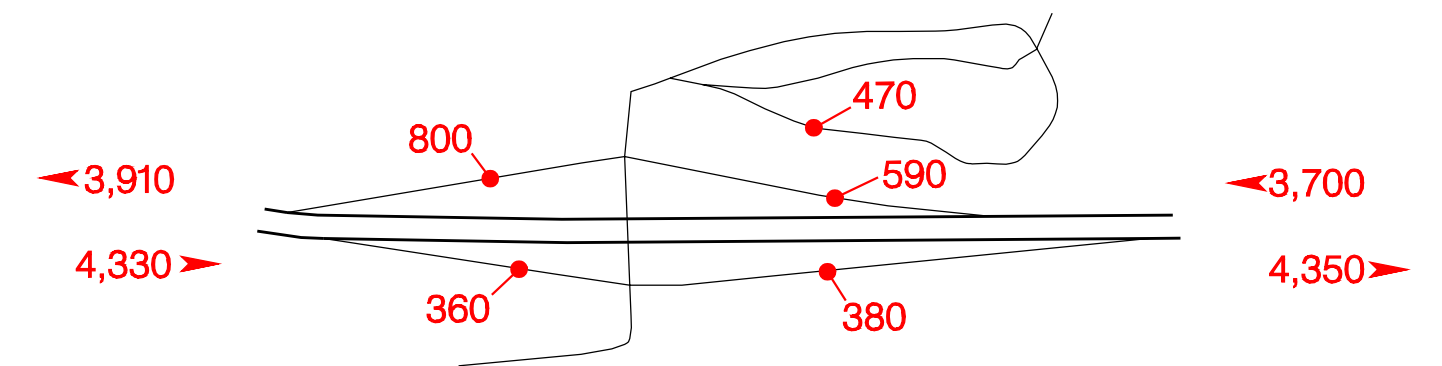
Durkee – Exit 327



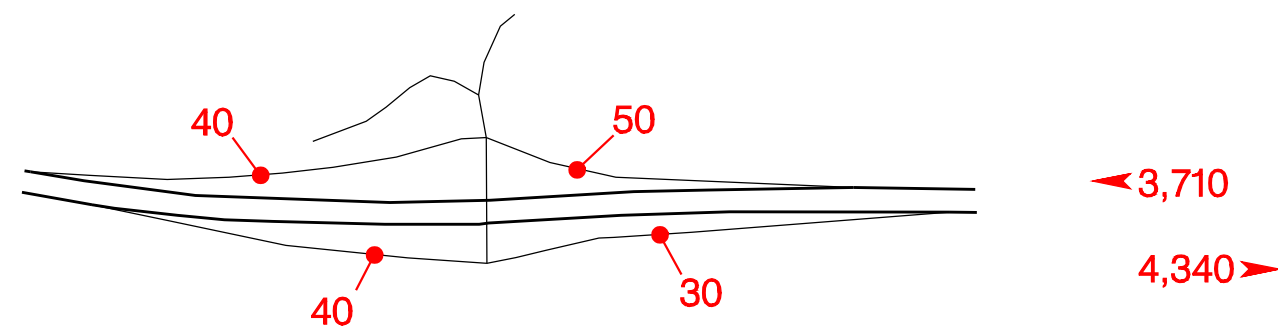
Nelson – Exit 330



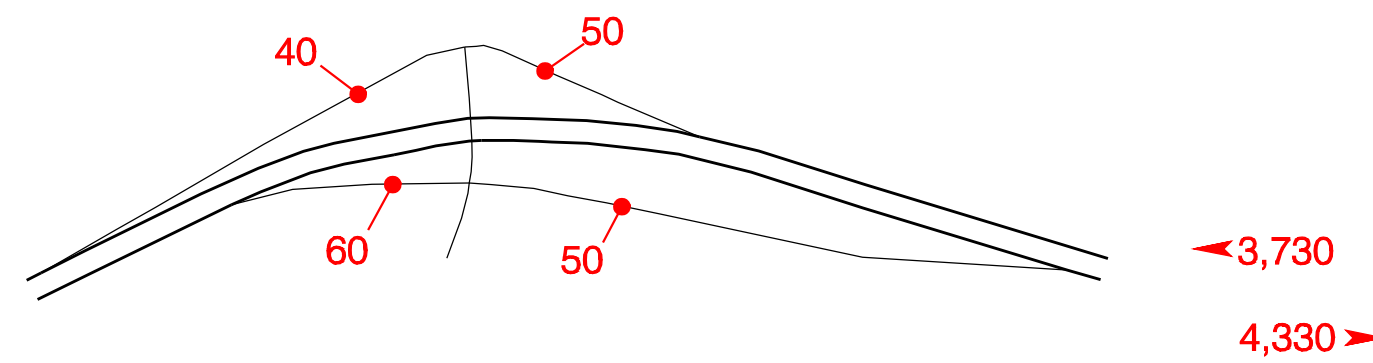
Weatherby – Exit 335



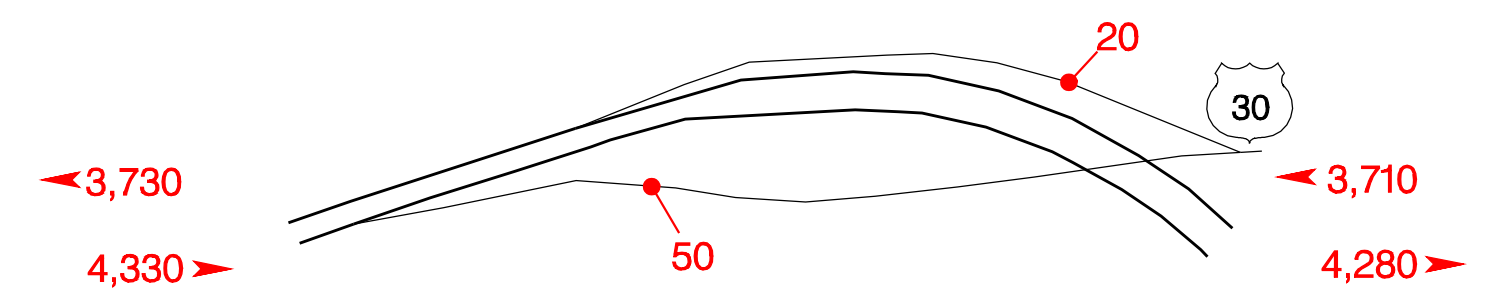
Jordan Creek – Exit 338



Dixie – Exit 340



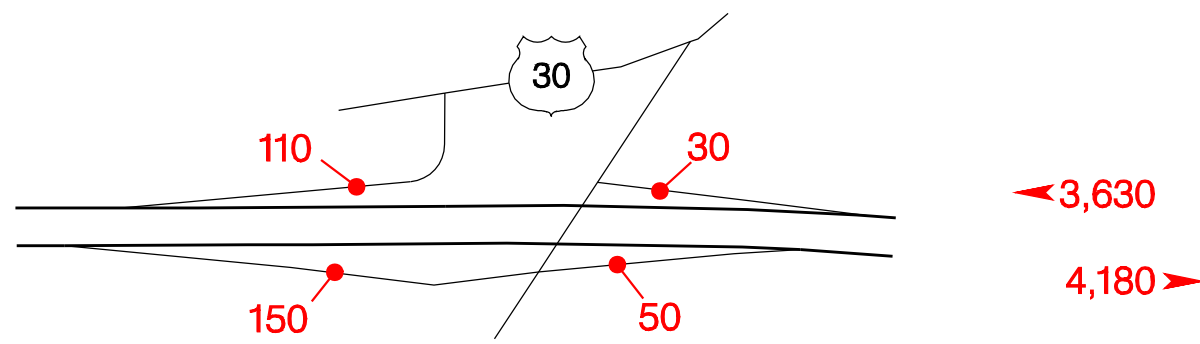
Lime – Exit 343



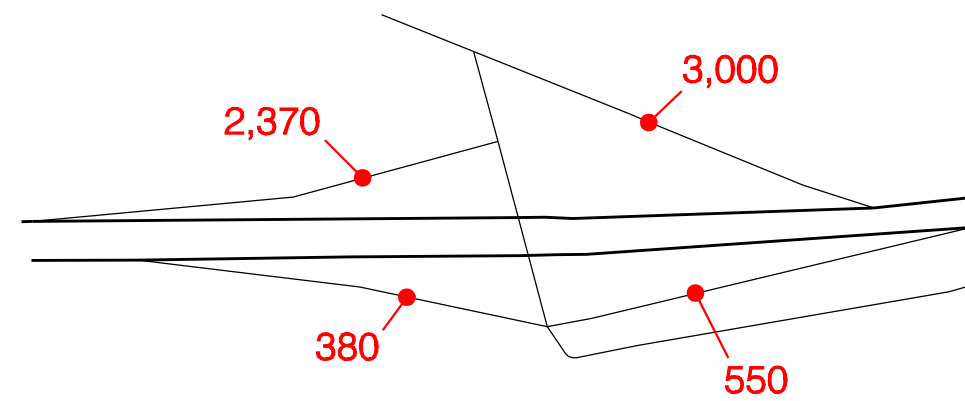
178

INTERSTATE  INTERCHANGES AND REST AREAS

North Huntington – Exit 345



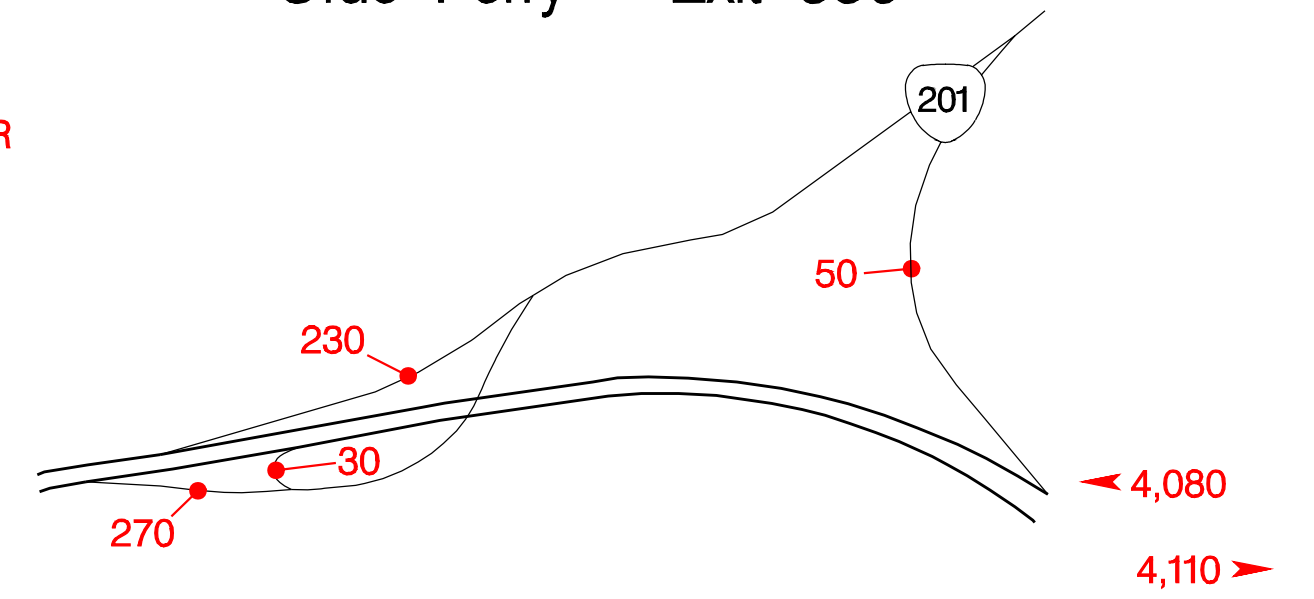
Benson – Exit 352



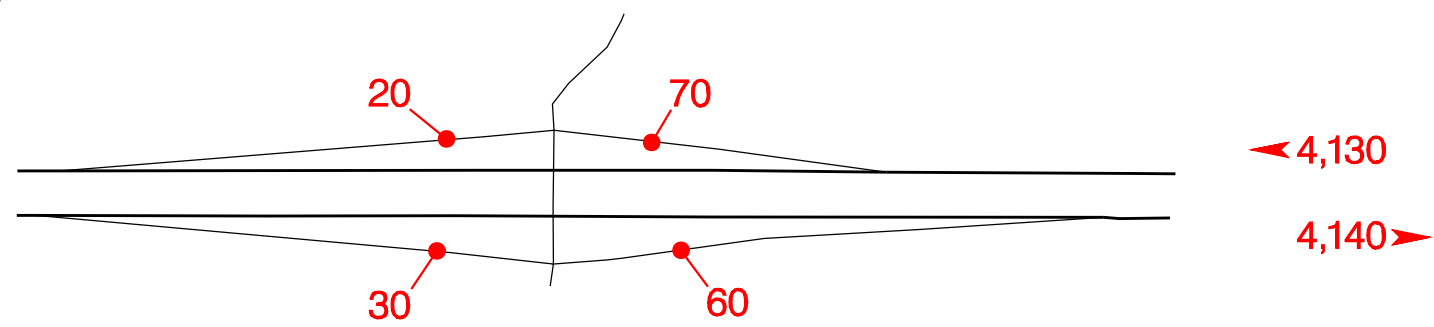
23-016
Huntington ATR
MP 353.47

4,260
4,350

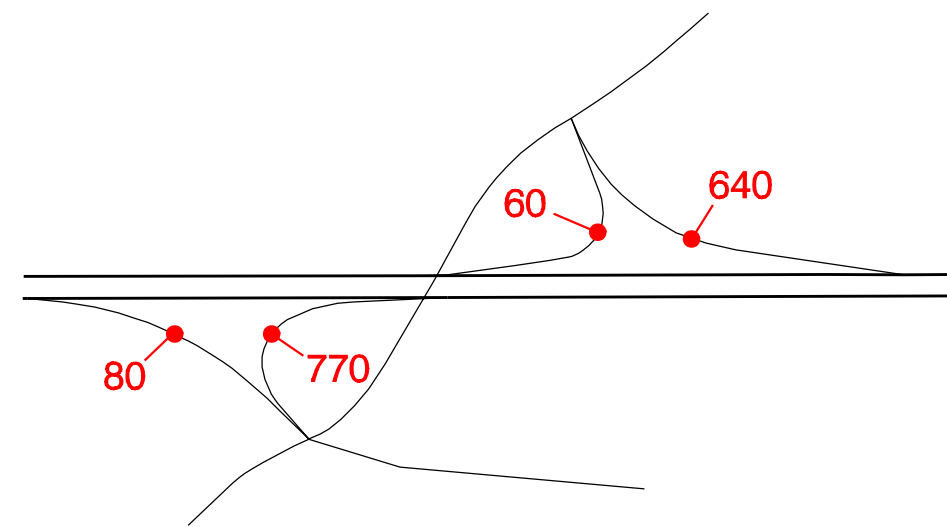
Olds Ferry – Exit 356



Moore's Hollow – Exit 362

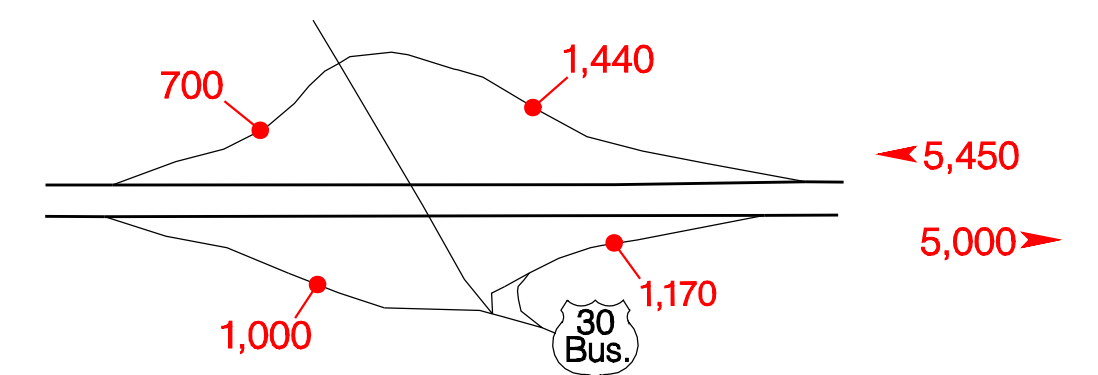


Stanton Blvd. – Exit 371



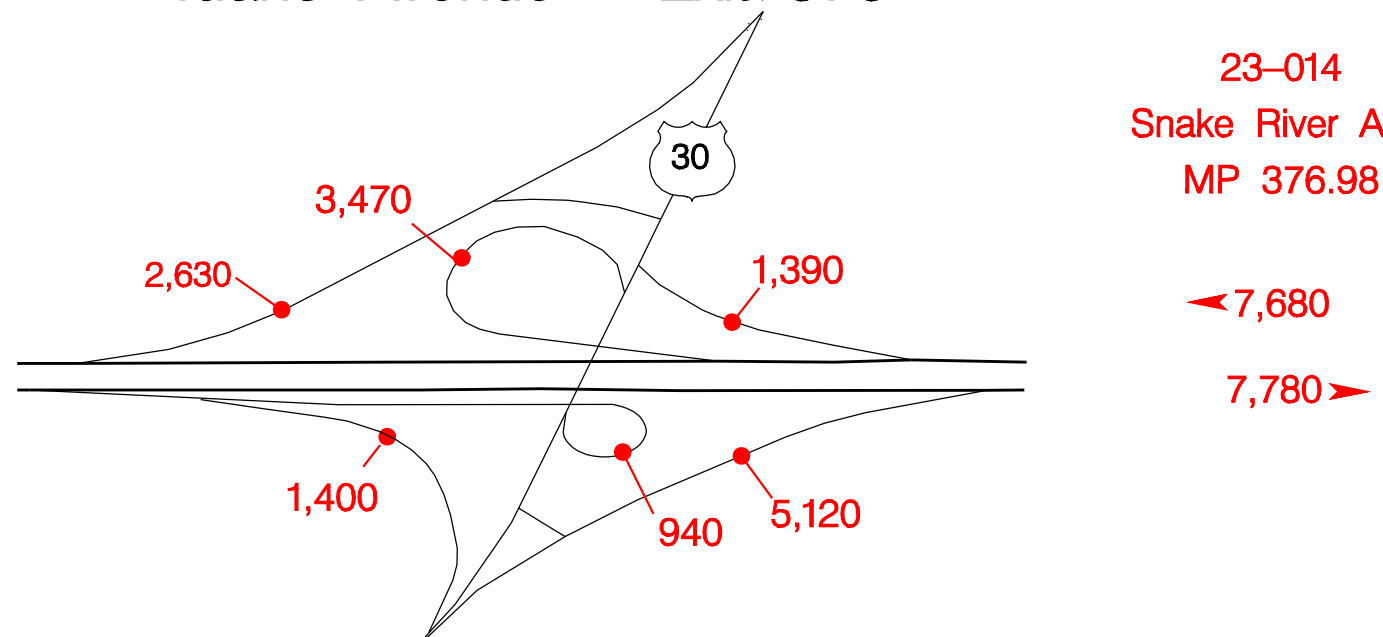
4,710
4,830

North Ontario – Exit 374



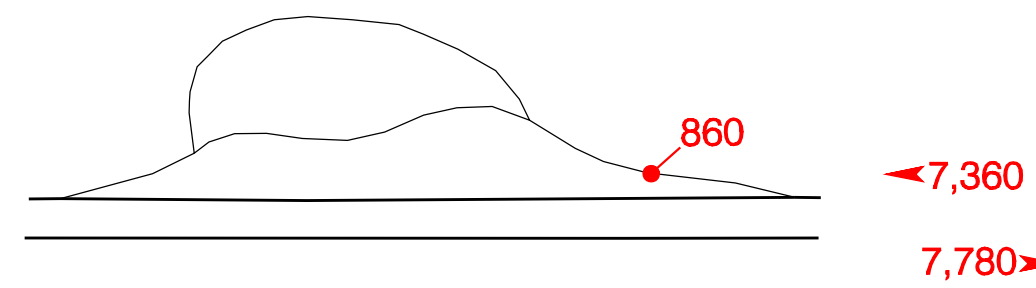
179

Idaho Avenue – Exit 376



23-014
Snake River ATR
MP 376.98

Ontario Rest Area – Exit 377



OREGON
IDAHO