

Administrator Packet

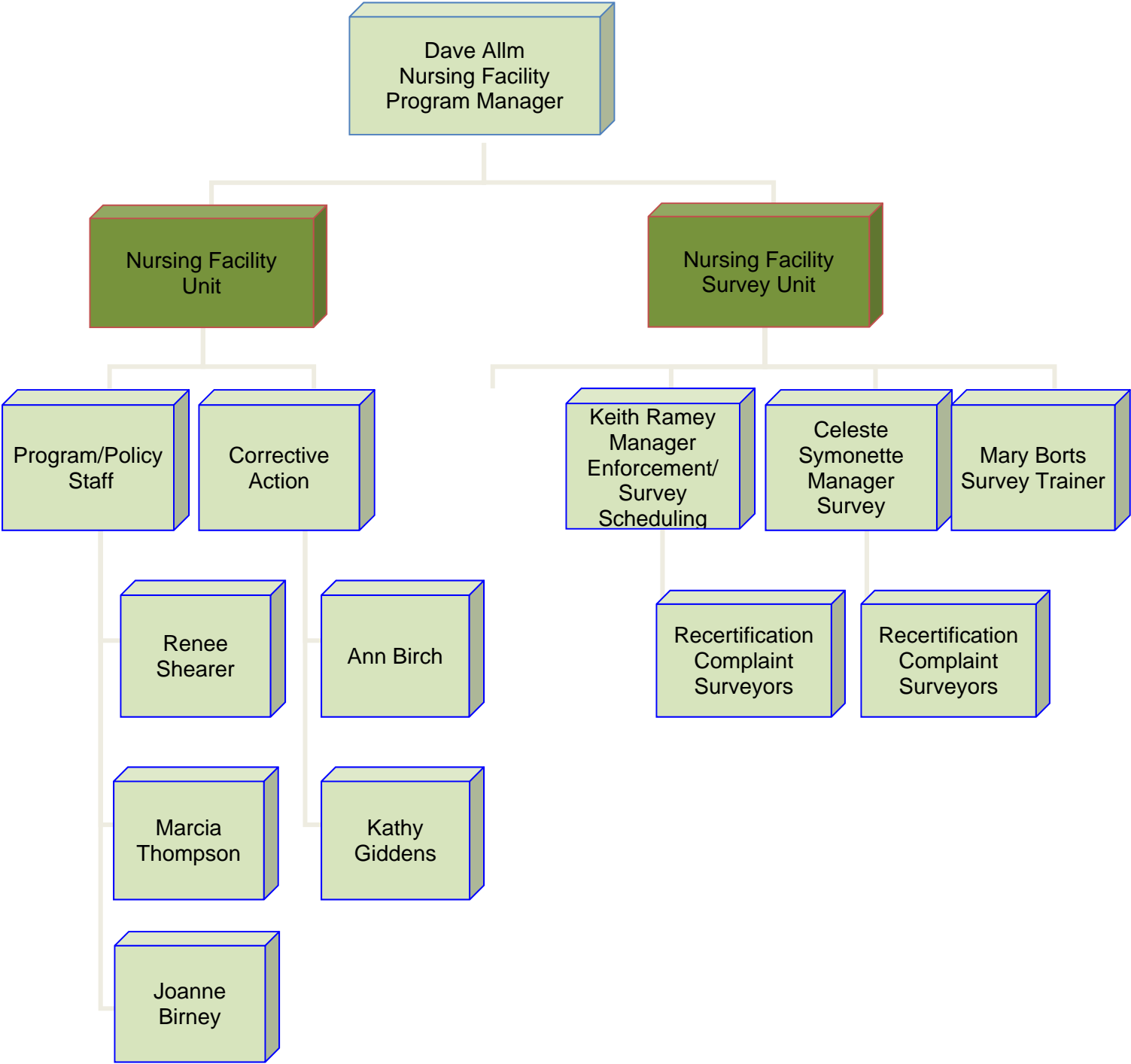
Working With the Office of Licensing and Regulatory Oversight



Nursing Facility Team:

Who to Contact About What

Nursing Facility Program Organization Chart



Nursing Home Licensing Unit

Nursing Home Unit Programs

- Nursing Home Licensing
- Rule Projects
- Corrective Action
- NF Survey
- Survey Enforcement

Contact:

David Allm, Program Manager
David.C.Allm@state.or.us
503-373-0945

Rule Projects

Contact:

Renee Shearer
Renee.m.shearer@state.or.us
503-373-2164

Nursing Facility Licensing

Questions About:

- Licensing
- Waivers
- Remodels
- Change of Ownership (CHOW)
- Change of Operator (CHOP)
- Facility Name Change
- Medicare/Medicaid Certification
- Facility Closure
- Memory Care Community
- Rule Interpretation

Contact:

Marcia Thompson, Operation and Policy Analyst

Marcia.thompson@state.or.us

503-373-2185

Staffing Program

Questions About:

- Nurse Aide Training & Competency Evaluation Program (NATCEP)
- Staffing Program
- CNA Registry
- Dining Assistance Program

Contact:

Joanne Birney, Operation and Policy Analyst
(Staffing Program Coordinator)

Joanne.birney@state.or.us

503-373-1964

(See attachment Nursing Staffing Program Guide, 2014)

Corrective Action

Questions About:

- Corrective Action
- Letter of Determination (LOD)
- Informal Conference
- State Process Sanctions
- Petition for Reconsideration
- Rule Interpretation
- Technical Assistance

Contact:

Kathy Giddens, Compliance Specialist

Kathy.R.Giddens@state.or.us

503-373-2050

Or

Ann Birch, Compliance Specialist

Ann.Birch@state.or.us

503-945-5825

(See attachment NF Complaint Assignment)

NF Transfers

Questions About:

- Resident Transfers
- Resident Rights of Return
- Leaving the Nursing Facility Brochure
- Technical Assistance

Contact:

Sean Scott, Compliance Specialist

Sean.P.Scott@state.or.us

503-373-7259

NF Survey Unit

Questions About:

- Written Notices/Correspondence
 - Statement of Deficiencies (SOD, 2567 & 2567B)
 - Plan of Correction (POC)
 - Remedies
- Survey Process in General
- Specific Survey Event Questions/Concerns
- Dispute Resolution (IDR), (IIDR)
- Interpretation & Clarification of Federal Regulations/Citations
- Timelines

Contact:

Celeste Symonette, Survey Manager

Celeste.C.Symonette@state.or.us

503-373-2179

Keith Ramey, Scheduling Manager

Keith.R.Ramey@state.or.us

503-373-2092

NF Survey Unit Enforcement & Scheduling

Questions About:

- Enforcement
- Survey Schedule
- Timelines
- Dispute Resolution (IDR) (IIDR)

Contact:

Keith Ramey
Keith.R.Ramey@state.or.us
503-373-2092

RAI Coordinator

Questions About:

- MDS 3.0
- MDS –Data Set Completion and Coding
- Clinical
- Assessment and Timelines

Contact:

Mary Borts

Mary.B.Borts@state.or.us

503-351-6938

Fire and Life Safety Services:

Healthcare Unit

Who to Contact About What

Office of State Fire Marshal

*Healthcare Unit
NF Life Safety Care Survey*

Contact:

Stacy Warner
Assistant Chief Deputy
Stacy.Warner@state.or.us
503-934-8252

Life Safety Care Survey

Questions About:

- Corrective Action Plan
- Citation Clarification
- Scheduling IDR
- Fire & Life Safety Rules (NFPA)
- Waivers

Contact:

Shawna Fenison
Shawna.Fenison@state.or.us
503-934-8276

Rules, Rules and Rules

Index:

State and Federal Rules, Regulations, Statutes and Interpretive Guidelines for Nursing Facilities

(See attachment for Index)

Nursing Facility Provider Resources

DHS Resources

Leaving the Nursing Facility Brochure and Form (form DHS 9847 (Rev 3/2009))
<http://dhsforms.hr.state.or.us/Forms/Served/DE9847.pdf>

Administrator Alerts – Subscribe to Administrator Alerts when new issues are published
<http://www.oregon.gov/DHS/spd/provtools/newsletters.shtml#aa>

Oregon Nursing Facility Abuse Reporting and Investigation Guide for Providers
DHS Form 0818 - (See Attachment)

Planning and Preparing for Emergencies

<http://www.oregon.gov/DHS/bcmp/index.shtml>

- Plan to Stay in Business
<http://www.oregon.gov/DHS/bcmp/part-prov/plan.shtml>
- Involve Employees and Practice
<http://www.oregon.gov/DHS/bcmp/part-prov/plan.shtml>
- Protect Your Investment
<http://www.oregon.gov/DHS/bcmp/part-prov/protect.shtml>
- Checklist for Licensed Care Facilities in Oregon
http://www.oregon.gov/OSP/SFM/FLSS_EPPChecklist.shtml

Facilities Planning and Safety – Code review, plan review, construction guide and more
<http://www.oregon.gov/DHS/spd/provtools/cbc/resources.shtml>

Aging and Disability Resource Connection of Oregon – A Resource Directory for Oregon families, caregivers and consumers seeking information about long term care supports and services.
http://adrcoforegon.org/contact_us.php

Living Well with Chronic Conditions – A six week workshop providing tools for living a healthy life with chronic conditions.

<http://public.health.oregon.gov/DiseasesConditions/ChronicDisease/LivingWell/Pages/Index.aspx>

Memory Care Community – New Rules –

http://www.dhs.state.or.us/policy/spd/rules/411_057.pdf

Transitional Care & Pressure Ulcers Project Toolkit <LINK>

<http://www.oregon.gov/DHS/spd/provtools/pressure-ulcers.shtml>

State Resources

Making Oregon Vital for Elders (MOVE) - www.orculturechange.org

Alzheimer's Network of Oregon - www.alznet.org

Oregon Geriatric Society - <http://www.oregongeriatricsociety.org>

Acumentra - <http://www.acumentra.org/>

Alzheimer's Association - www.alz.org

Alzheimer's Foundation - www.alzfdn.org/

Leading Age, (formerly American Association of Homes and Services for the Aging) (AAHSA) - www.aahsa.org

American Health Care Association - www.ahcancal.org/

Pioneer Network - www.pioneernetwork.net

Oregon Health Care Association – www.OHCA.com