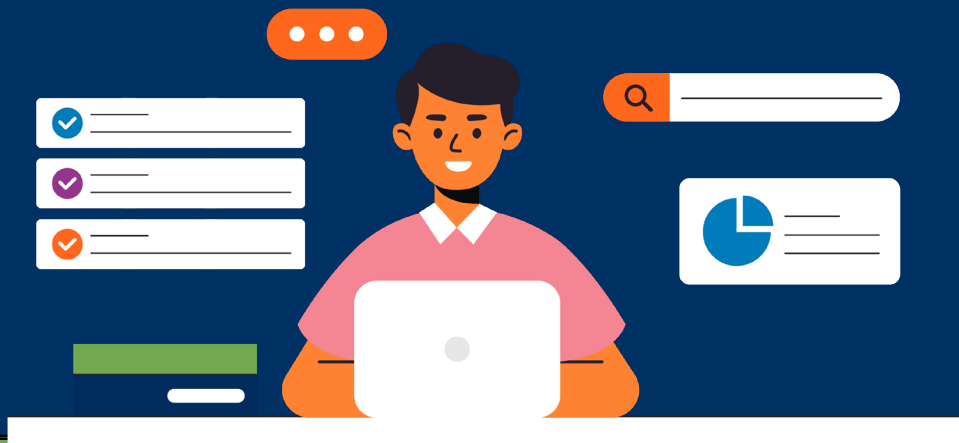


Frequently Asked Questions

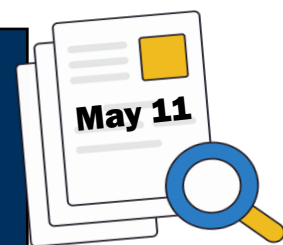
ODDS and the end of the COVID-19 public health emergency (PHE)



The last day of the COVID-19 public health emergency (PHE) is May 11, 2023. The PHE allowed the federal government and the Office of Developmental Disabilities (ODDS) to make temporary changes to policies to protect people from COVID-19. These frequently asked questions will help you and your family know what to expect.

Q: When is the public health emergency (PHE) ending?

A: The last day of the PHE is May 11, 2023. Contact your services coordinator or personal agent if you need more information and support. They can assist and help you plan for what comes next.



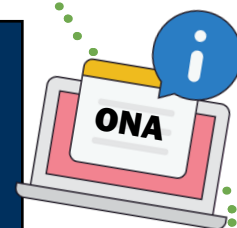
Q: Can a verbal “yes” still be used instead of a written signature on all my documents after the PHE ends?

A: No. This ends May 11. Written or electronic signatures will be required for documents like the Individual Support Plan. You can sign documents by hand during meetings. For remote meetings, you can mail them in or email them to your case manager.



Q: Can I do the Oregon Needs Assessment (ONA) virtually after the PHE ends?

A: No. The ONA requires an assessor to meet you or your child for a face-to-face observation. When the PHE ends on May 11, the flexibility to do this part of the meeting remotely will end. You will still be able to do other parts of the ONA online if you prefer.



Q: Will services coordinators still be allowed to work in 24-hour residential group home and foster care settings after the PHE ends?

A: No. This ends after May 11, 2023.



Q: Will my annual Individual Support Plan meeting be remote after the PHE ends?

A: No. During the PHE, the government waived this requirement. After the PHE, when it is time to renew your plan, you will meet in person. Other meetings may still be remote by phone or other technology that protects your privacy.



Q: Can Individual Support Plans be approved or changed retroactively after the PHE ends?

A: No. This ends after May 11, 2023. In the event of a federal, state, or local emergency, this flexibility may come back. ODDS will let you know if this happens.



Q: Can parents remain paid providers for their children who are minors with significant support needs after the PHE ends?

A: No. This ability is tied to the PHE and ends after May 11, 2023. The Oregon Legislature is considering options to allow parents of children with specific needs to be paid caregivers. If a bill passes, there will still be a gap between the end of the PHE and any new program for paid parent caregivers. A new program would likely be different from what was tied to the PHE. May 11, 2023, is the last day a parent can work as a paid provider for their own minor child.



Q: Can my Individual Support Plan's end date be extended for an additional year without a meeting after the PHE ends?

A: No. This ends after May 11, 2023. All ISPs must renew annually once the PHE ends.



Q: Will exceptions for attendant care during school hours and activities continue after the PHE ends?

A: No. Federal rules require ODDS to stop attendant care exceptions during school hours and activities when the PHE ends.



“What else is changing as the PHE ends?”

Q: Will my providers still wear face masks when they support me at home after the PHE ends?

A: Oregon lifted mask requirements for health care settings, including ODDS services, on April 3, 2023. You can still require your provider to wear a mask. Before they come into your home, your providers must ask you and your family if you want them to wear a mask.



Q: Will providers still report positive COVID-19 cases for people who receive services to ODDS when the PHE ends?

A: No. Reporting positive cases to ODDS is no longer required. Providers must still report positive cases of serious contagious diseases to their local public health authority.



Q: Will higher attendant care hours for children assigned during summer months still be available during school months when the PHE ends?

A: Yes. This is unrelated to the PHE. If a child still needs access to the higher summer hours, this practice can continue until further notice. ODDS will communicate more before this practice ends.



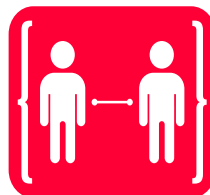
Q: Currently, when someone in a 24-hour residential group home or foster care home tests positive for COVID-19, outside visits stop until all in the home test negative. Will this change when the PHE ends?

A: Maybe. This will be different from county to county. Local public health authorities will advise providers on restrictions related to outbreaks. Contact your local office for more information.

Ways to stay safe from COVID-19



Wash hands frequently



Maintain social distancing



Wear a mask when you feel sick