



# Amtrak Cascades Ridership Report September 2008



The following information is a snapshot of ridership performance (with a few observations), average trip length, a year-to-date summary, and other Amtrak Cascades news.

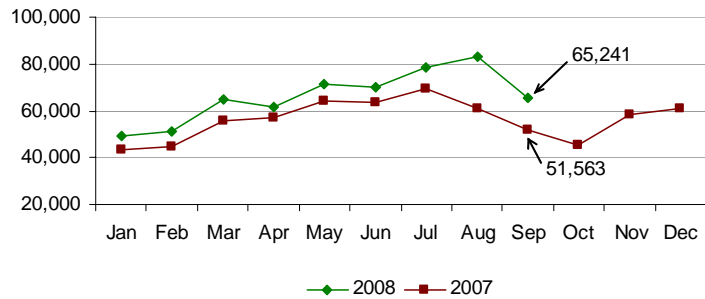
## Ridership

**September breaks 60,000 for the first time.**

Ridership decreased in September 2007 due to mechanical issues with the Talgo equipment. When compared with September 2007:

- Ridership increased 26.5 percent.
- Ridership for train 501(Sea-Pdx) increased 53.3 percent.
- Ridership for train 508 increased 48.9 percent.
- Ridership for train 509 (Sea-Pdx) and 509 (Pdx-Eug) increased 25.3 percent and 120.7 percent, respectively.
- Ridership for trains 513 and 516 increased 60.1 percent and 41.0 percent respectively.

## Passengers



## Monthly Ridership per Funding Agency

Amtrak Cascades operations are funded by the states of Washington and Oregon and Amtrak. This table provides a breakdown per funding agency.

When compared with September 2007:

- Ridership for Washington State funded trains increased 22.5 percent.
- Ridership for Oregon funded trains increased 54.0 percent.
- Ridership for Amtrak funded trains increased 18.5 percent.
- See "Other Amtrak Cascades News" below for other information.

| Agency                   | 2008          | 2007          |
|--------------------------|---------------|---------------|
| Washington Funded Trains | 44,610        | 36,055        |
| Oregon Funded Trains*    | 9,801         | 6,365         |
| Amtrak Funded Trains**   | 10,830        | 9,143         |
| <b>Route Totals</b>      | <b>65,241</b> | <b>51,563</b> |

\*Represents trains 500 (Eug-Pdx), 504, 507 (Pdx-Eug), and 509 (Pdx-Eug).

\*\*Represents trains 500 (Pdx-Sea) and 509 (Sea-Pdx).

## Year-to-Date (YTD) Summary

- Average trip length has increased an average of one mile per passenger when compared with 2007.

| YTD  | Ridership | Passenger Miles (PM) | Ave. Trip Length (miles) |
|------|-----------|----------------------|--------------------------|
| 2008 | 594,970   | 91,785,304           | 154.3                    |
| 2007 | 511,507   | 78,379,608           | 153.2                    |

## Other Amtrak Cascades News

- Amtrak Superliner equipment is being used for trains 510 and 517 and is operating with its original schedule.
- WSDOT and Amtrak began a new Amtrak Cascades connecting bus service on May 12. September ridership for this new bus service was 1,486. This was a 26.4 percent increase from August 2008.