

OREGON MODELING STEERING COMMITTEE

FY 2009-2010 Program Goals

INTRODUCTION

The Oregon Modeling Steering Committee (OMSC) was formed in 1996 to provide direction and oversight to the Oregon statewide modeling program. The OMSC is currently composed of representatives of the following organizations:

- OR Department of Administrative Services-Office of Economic Analysis (OEA)
- OR Department of Energy (ODOE)
- OR Department of Environmental Quality (ODEQ)
- OR Department of Land Use and Conservation (DLCD)
- OR Department of Transportation (ODOT)
- Portland Metro (Metro)
- Mid-Willamette Valley Council of Governments (MWVCOG)
- Lane Council of Governments (LCOG)
- Rogue Valley Council of Governments (RVCOG)
- Corvallis Area Metropolitan Planning Organization (CAMPO)
- Bend Metropolitan Planning Organization (BMPO)
- Southwest Washington Regional Transportation Council (RTC)
- Port of Portland (POP)
- Oregon Transportation Research & Education Consortium (OTREC)
- Federal Highway Administration (FHWA)

It is the mission of the OMSC to:

- Improve the state-of-the-practice and promote state-of-the-art land use and transportation modeling in the state of Oregon.
- Serve as a consensus forum and support group to coordinate the land use-transportation modeling efforts of federal, state, regional and local agencies.

Much of the work of the OMSC is conducted through subcommittees. These program goals are intended to define the roles and responsibilities of these committees and to provide guidance to the OMSC and its subcommittees to meet the OMSC mission. Annual reports summarize the accomplishments of the OMSC toward meeting its annual program goals. The OMSC strategic plan and annual reports can be viewed at <http://www.oregon.gov/ODOT/TD/TP/OMSC.shtml>.

OMSC PROGRAM GOALS

The OMSC Long-Range Strategy Subcommittee recommends these program goals to the OMSC. The program goals list the purpose and general responsibilities of the OMSC and each subcommittee. Specific tasks for FY2009-2010 are listed for each

subcommittee. An organization chart showing relationships of OMSC Subcommittees is included at the end of the program goals.

Oregon Modeling Steering Committee - Bill Upton/ODOT, Chair

Purpose: Provide direction and oversight to the Oregon statewide modeling program. This cooperative effort maximizes the limited resources and expertise of the participating agencies/jurisdictions and helps develop consensus on uniform modeling practices and implementation across agency/jurisdictional lines and across the state.

Responsibilities: All members of the OMSC are encouraged to:

- Promote state-of-the-art and state-of-the practice for modeling in Oregon for both rural and urban environments.
- Look for opportunities to create efficiencies through partnerships, shared resources, cooperative projects, and other methods.
- Work towards coordination of modeling efforts among all local, state and federal agencies and jurisdictions.
- Regularly discuss policy and application issues and opportunities, and technical tools.
- Encourage and support multi-agency/jurisdiction projects and programs.
- Expand the focus of the OMSC from transportation modeling to include land use and economic modeling as they relate to transportation.
- Provide oversight to subcommittee activities.
- Provide training and build private business partnerships to further the state of modeling.
- Collaboratively define, anticipate and discuss current and future end user needs.
- Interpret results of modeling efforts to allow visualization of results for maximum and best use of modeling tools.
- Through education and advocacy, make modeling a standard tool and decision-making process for Oregon communities and agencies.

FY2009-2010 Focus:

- Evaluate the family of analysis tools available in OR and advocate for expanded use of tools in the appropriate ways.
- Engage speakers and presenters for quarterly meetings to keep abreast of emerging issues, such as least cost planning and climate change.
- Support the OR Household Activity Survey.
- Be responsive to legislative directives and mandates.

Standing Subcommittees

Four standing subcommittees perform much of the work of the OMSC.

Long-Range Strategy Subcommittee – Bill Upton/ODOT, Chair

Purpose: Responsible for annual work planning, strategic activities and OMSC membership.

Responsibilities:

- Develop quarterly meeting agendas
- Facilitate discussion and reevaluation of OMSC mission, role and responsibilities, as needed.
- Prepare Annual Report of Accomplishments and Annual Program Goals.
- Represent OMSC in public forums.
- Identify potential new OMSC members and coordinate new member orientation.

FY2009-2010 Focus:

- Develop strategy for transition of OMSC leadership.
- Strategize on how to address legislative mandates and directives, especially for greenhouse gas (GHG) emissions modeling and least cost planning (LCP).
- Evaluate membership and the long-term purpose of the CCS and recommend to the OMSC.

Professional Development Subcommittee – Ray Jackson/MWVCOG, Chair

Purpose: Address technical model development, education, training and quality control.

Responsibilities:

- Inform OMSC members of education and training opportunities.
- Assist in coordination of education and training programs, as requested.
- Keep OMSC members informed of developments and improvements for Oregon models through quarterly meeting updates.
- Coordinate university collaboration for conferences, seminars, and other cooperative endeavors.
- Encourage OMSC members to give presentations and submit professional articles on applications of Oregon models and modeling programs.
- Serve as chair of the Oregon Modeling Users Group (OMUG) and coordinate speakers and membership.

FY2009-2010 Focus:

- Coordinate and facilitate OMUG to share information with technical staff of agencies, jurisdictions and private interests.
- Explore opportunities for broader technical/training discussions.

Applications Subcommittee – Brian Dunn/ODOT, Chair

Purpose: Address the environment and criteria under which models are applied, i.e., regulatory requirements and general application. Focal point for peer review and research.

Responsibilities:

- Coordinate development of policy and performance measures for public policy documents.
- Coordinate requests for OMSC support or review of modeling efforts or programs.
- Coordinate OMSC review and comment on regulatory issues that affect or are informed by modeling development and applications.

- Develop and maintain an on-going list of research projects and proposals from OMSC members.
- Provide OMSC sponsorship for research funding applications.

FY2009-2010 Focus:

- Coordinate OMSC-sponsored research proposals with ODOT Research Unit and OTREC.
- Maintain an on-going list of research projects and proposals from OMSC members.
- Coordinate peer review of Oregon models, as requested.

Modeling Program Coordination Subcommittee – Dick Walker/Metro, Chair

Purpose: Provide a technical and interactive forum for discussion of model development and application issues for MPOs and ODOT.

Responsibilities:

- Provide forum for technical modeling discussions.
- Conduct an annual meeting and interim reviews for MPOs and ODOT to coordinate technical modeling programs and activities.
- Coordinate OMSC technical review of procedures and guidelines for use and application of models, development, application, post-processing and project level analysis.
- Look for opportunities for joint projects among OMSC members.

FY2009-2010 Focus:

- Coordinate modeling agencies.
- Provide input and support for the OR Household Activities Survey Subcommittee.
- Coordinate the modeling component of MPO Unified Planning Work Programs (UPWPs) for consistency and cooperation.

Ad Hoc Subcommittees for Special Topics for FY2009-2010

For issues that require personnel or expertise beyond the OMSC, or that are specific and complex issues, ad hoc subcommittees may be formed to implement activities of the OMSC. Ad Hoc Subcommittees will be chaired by an OMSC member and may include OMSC members and non-members. Following is a list of Ad Hoc Subcommittees and responsibilities recommended for FY2009-2010.

Oregon Household Activity Survey (OHAS) Ad Hoc Subcommittee – Dick Walker/Metro and Bill Upton/ODOT, Co-chairs

Purpose: Provide oversight for development and implementation of the statewide Oregon Household Activity Survey.

Responsibilities:

- Provide oversight for consultant selection, development and implementation of the statewide survey.
- Coordinate funding of the survey.
- Oversee technical working group to work closely with selected consultant team.

FY2009-2010 Focus:

- Work with ODOT as project manager to identify/provide funding and coordinate implementation of the OHAS.
- Provide technical oversight to the OHAS program.
- Define storage, maintenance and manipulation program for OHAS data.
- Discuss/address consistent analysis of the survey data.

Oregon Modeling Users Group (OMUG) – Ray Jackson/MWVCOG, Chair

Purpose: Facilitate and encourage broad discussion and ideas on development and implementation of Oregon models throughout the Oregon modeling community.

Responsibilities:

- Organize and facilitate quarterly OMUG meetings.
- Encourage broad participation in OMUG by public and private interests involved in modeling in Oregon.
- Look for training and education opportunities by and for OMUG participants.

FY2009-2010 Focus:

- Coordinate speakers and schedule quarterly meetings of the OMUG.
- Look for opportunities for training and information sharing on technical tools for transportation and land use modeling.

Climate Change Subcommittee (CCS) – Bill Upton/ODOT and Dave Nordberg/ODEQ, Co-chairs

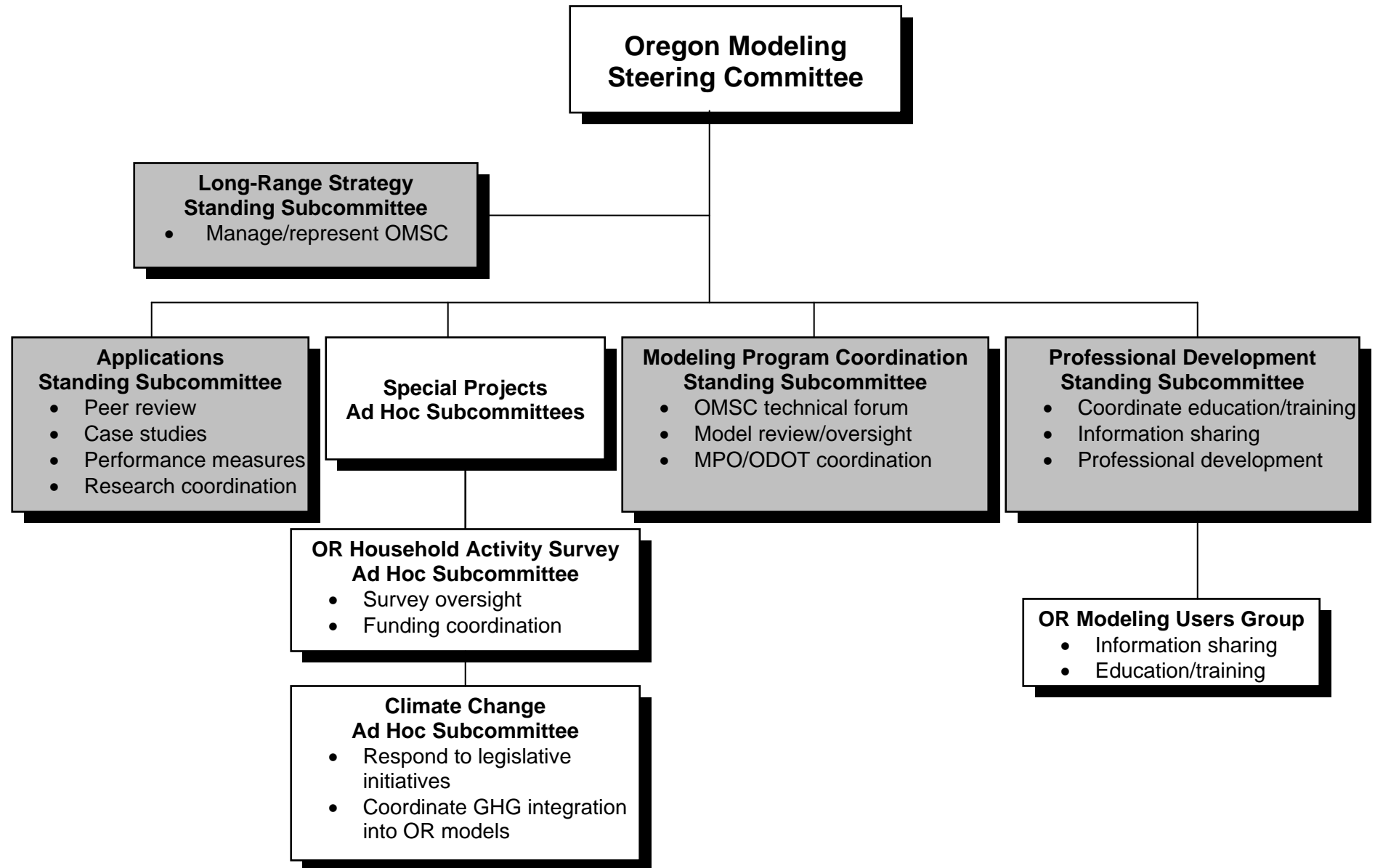
Purpose: Coordinate and provide technical guidance and oversight for model development and applications, and communicate results of analysis of GHG emissions and climate change. In the short-term, this includes providing independent review of modeling tools, reviewing results and presentations, and generally advising the Global Warming Commission and its Transportation & Land Use Committee (T&LUC) on the development and use of these tools and analyses to achieve immediate objectives. In the long-term, this includes coordinating technical efforts for model development, consistency of application among different models and areas of the state, input assumptions, and other actions necessary to integrate GHG into the Oregon modeling program.

Responsibilities:

- Review and critique development and application of the Greenhouse gas State Transportation Emissions Planning Model (GreenSTEP), as requested.
- Coordinate technical efforts for integration of GHG into the Oregon modeling program.

FY2009-2010 Focus:

- Respond to legislative requests and initiatives for GHG modeling, as requested.
- Coordinate development of work programs for integration of GHG and least cost planning into Oregon models, as requested.
- Define requirements and advocate for analysis tools for GHG modeling.
- Modify membership as necessary to address FY2009-2010 issues.



FY2009-2010 Organization Chart for the Oregon Modeling Steering Committee