



Oregon

Theodore R. Kulongoski, Governor

Department of Transportation
Technical Services
Roadway Engineering Section
355 Capitol Street NE, Room 222
Salem, OR 97301-3871
Telephone 503-986-3714
FAX 503-986-3749

DATE: September 11, 2009

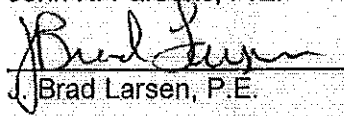
Addendum No. 3

TO: PLAN HOLDERS

PREPARED BY:


John K. Parsons, P.E.

APPROVED BY:


J. Brad Larsen, P.E.

SUBJECT: Barnett Road – Blue Heron Park Unit 2C
Bear Creek Greenway Trail
Jackson County
Grading, Structures, Paving, Illumination and Signals Project
(Bids to be opened and read September 17, 2009)

The following changes are made to the Project Special Provisions:

1. Subsection **00512.80(e) Drilled Shaft Reinforcement** - The estimated quantity of uncoated reinforcement is changed to 42,500 pounds.
2. Subsection **00530.80(a) Lump Sum** - The estimated quantity of uncoated reinforcement is changed to 94,000 pounds.
3. Subsection **00540.24 Deck Finishing Machine** – This subsection is added as follows:

00540.24 Deck Finishing Machine – Replace this subsection with the following subsection:

00540.24 Deck Finishing Equipment and Method – No later than 21 days prior to the first Deck Pre-Placement Conference, submit unstamped working drawings according to 00150.35 showing the equipment and methods to be used to finish the deck.

Use equipment and methods method that are:

- Capable of finishing the entire deck surface or the specified stage construction width
- Capable of striking off the concrete to the specified grade shown
- Capable of vibrating the concrete to meet the requirement of this Section

4. Subsection **00540.43(a) Construction Joints** – The third paragraph of this subsection, which begins "Saw cut the top 1 Inch...", is deleted.
5. Subsection **00540.50(c) Deck Roadway Texturing** - This subsection is replaced with the following subsection:

00540.50(c) Deck Roadway Texturing – Apply a medium broom finish to the deck roadway.

The following changes are made to the Project Plans:

1. Plan sheets:

82494, 82496, 82500, 82501 and 82502

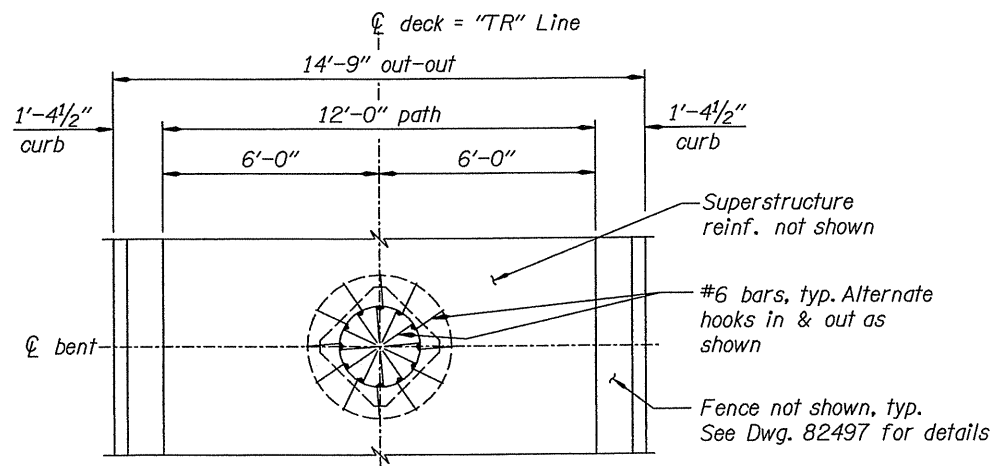
are replaced with revised plan sheets:

82494, 82496, 82500, 82501 and 82502.

These changes will be included in the Contract for this Project. It is understood that your Bid will be submitted accordingly.

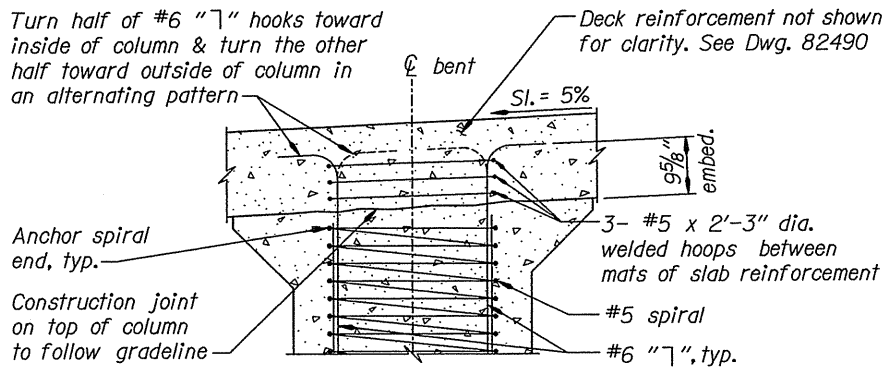
JBL:jkp

Attachments: Revised Plan Sheets



PLAN - BENTS 2-6 & 10-14

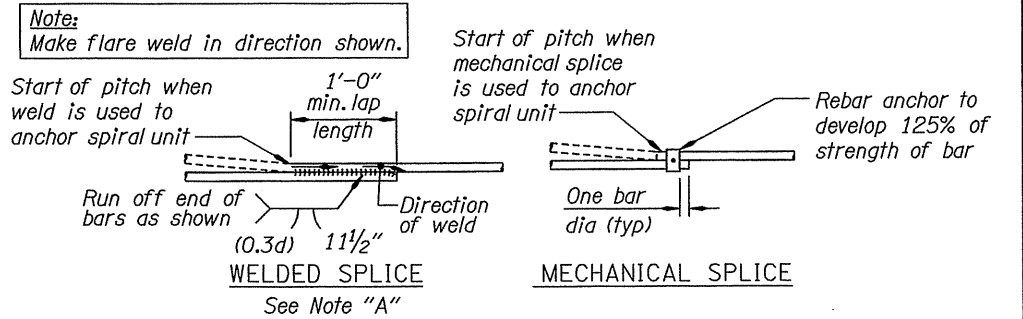
Scale: 3/8" = 1'-0"



TYPICAL COLUMN TOP DETAIL

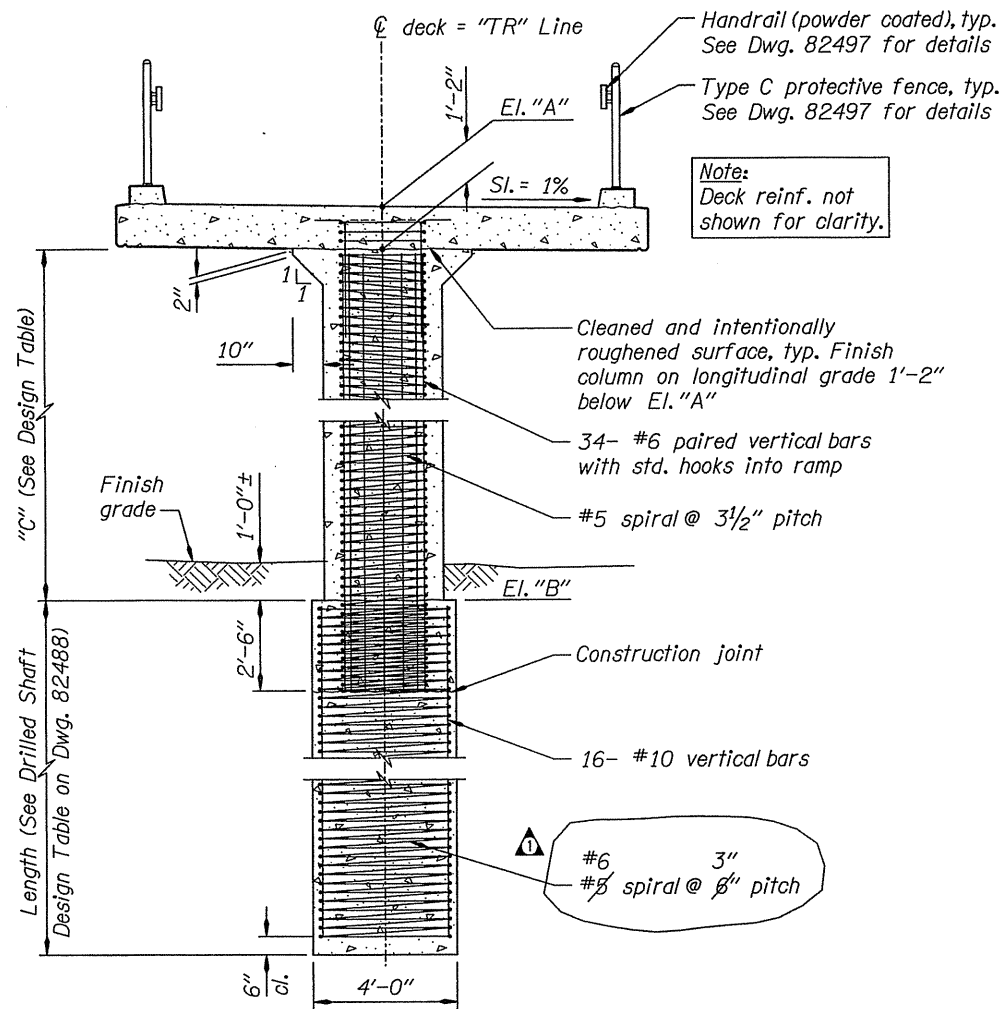
Scale: 3/4" = 1'-0"

Note "A":
ASTM A706 spirals shall be used for all welded splices. Spirals shall be anchored at each end or discontinued with one extra turn and spliced to itself as shown. Where permitted on plans, provide closed hoops conforming to the requirements of this detail.



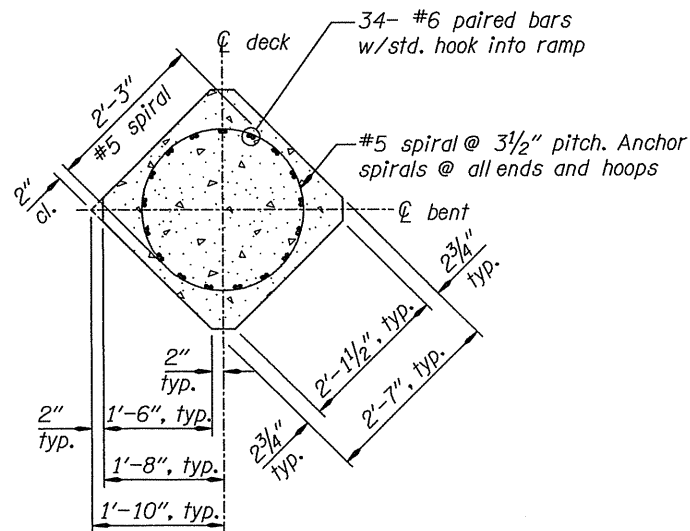
SPIRAL SPLICE / TERMINATION DETAIL

No Scale



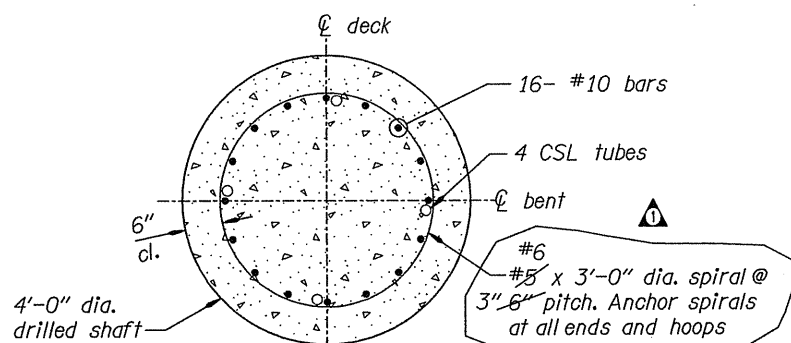
ELEVATION - BENTS 2-6 & 10-14

Scale: 3/8" = 1'-0"



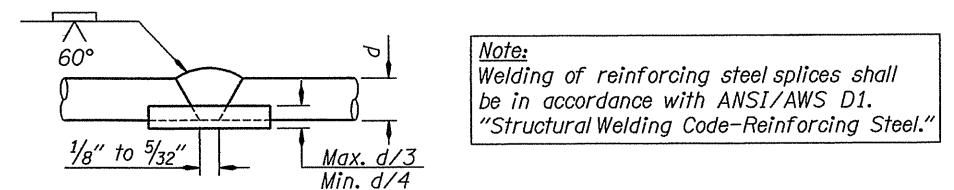
TYPICAL COLUMN SECTION

Scale: 3/4" = 1'-0"



TYPICAL DRILLED SHAFT SECTION

Scale: 3/4" = 1'-0"



ALTERNATIVE WELDED SPLICE

No Scale

DESIGN TABLE			
Bent	El. "A" (ft.)	El. "B" (ft.)	Dim. "C" (ft.)
1	1402.27	1389.0	12.1
2	1403.77	1390.0	12.6
3	1405.27	1390.0	14.1
4	1406.77	1391.0	14.6
5	1408.27	1391.0	16.1
6	1409.77	1392.0	16.6
7	1410.46	1392.0	17.3
10	1409.32	1391.0	17.2
11	1407.82	1391.0	15.7
12	1406.32	1390.5	14.7
13	1404.82	1390.5	13.2
14	1403.32	1390.0	12.2
15	1401.82	1390.5	11.6

Design Table Notes:
Elevation "A" is finish grade at the intersection of "TR" Line and bent centerline.

Elevation "B" is top of drilled shaft.

WARNING:
IF THIS BAR DOES NOT MEASURE 1" THEN DRAWING IS NOT TO SCALE.



DATE	REVISION	BY
9/10/09	Revised spiral spacing	JBL

ACCOMPANIED BY DWGS. See Dwg. 82482 for this structure

DESIGNER: S. Woller
 DRAFTER: JBL
 CHECKER: Michael L. Hawkins, PE
 REVIEWER: Gary E. Rayer, SE, PE



OREGON DEPARTMENT OF TRANSPORTATION

OBEC CONSULTING ENGINEERS
www.obec.com

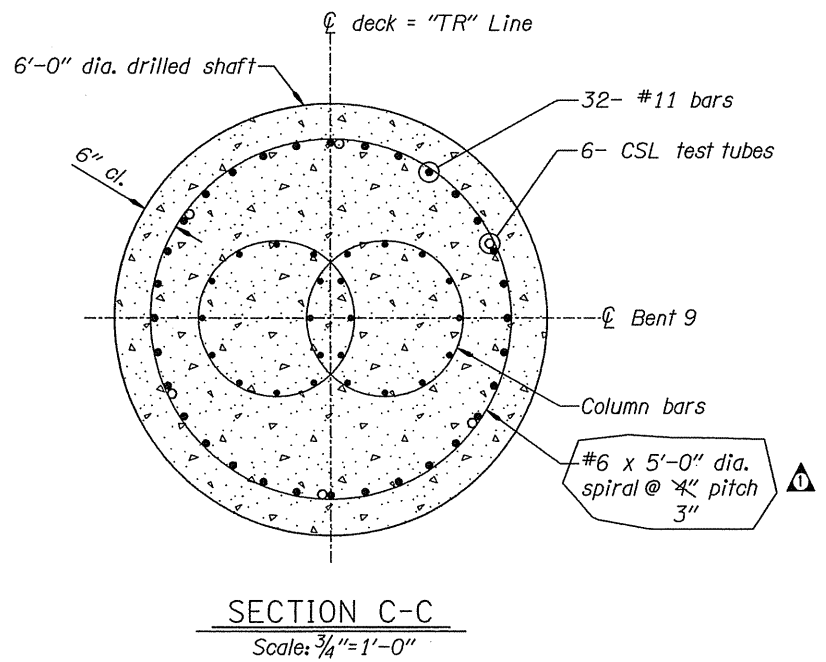
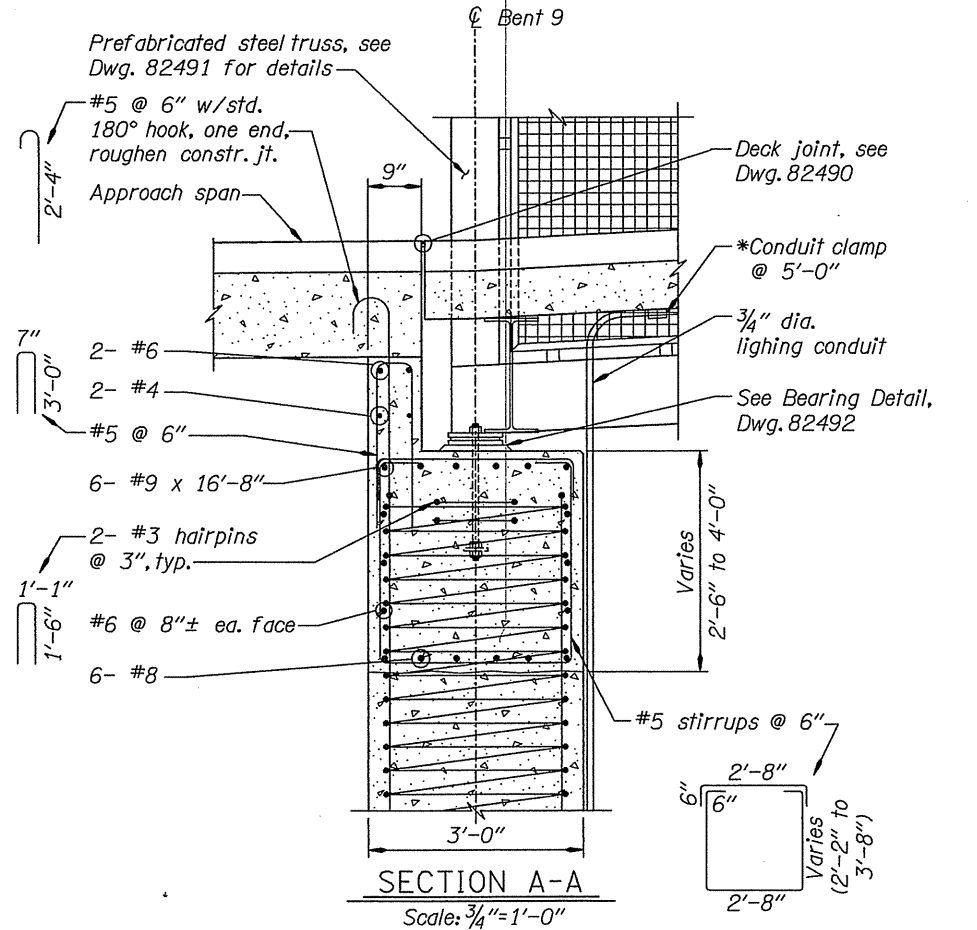
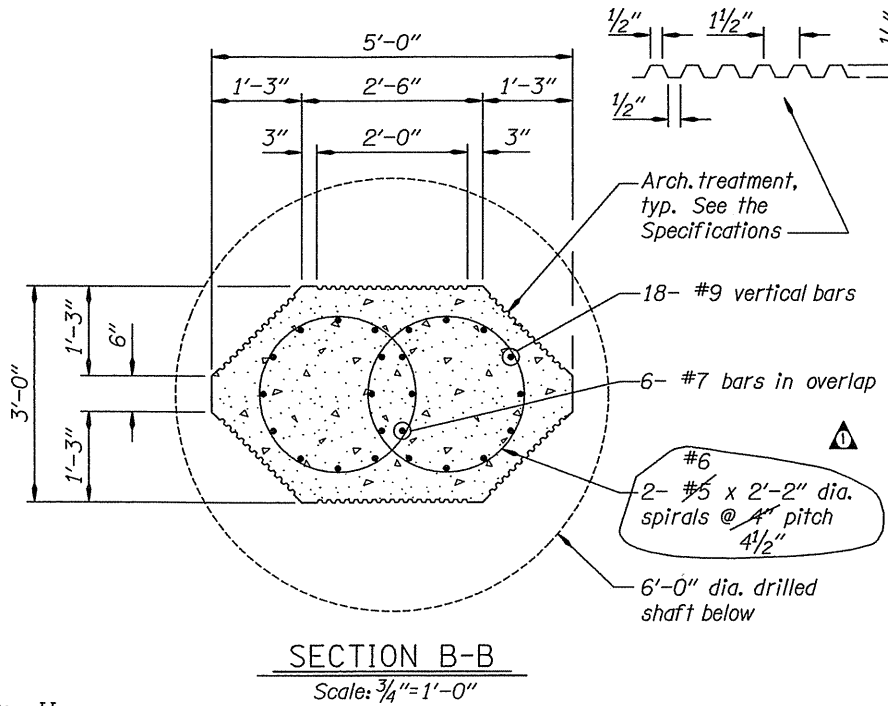
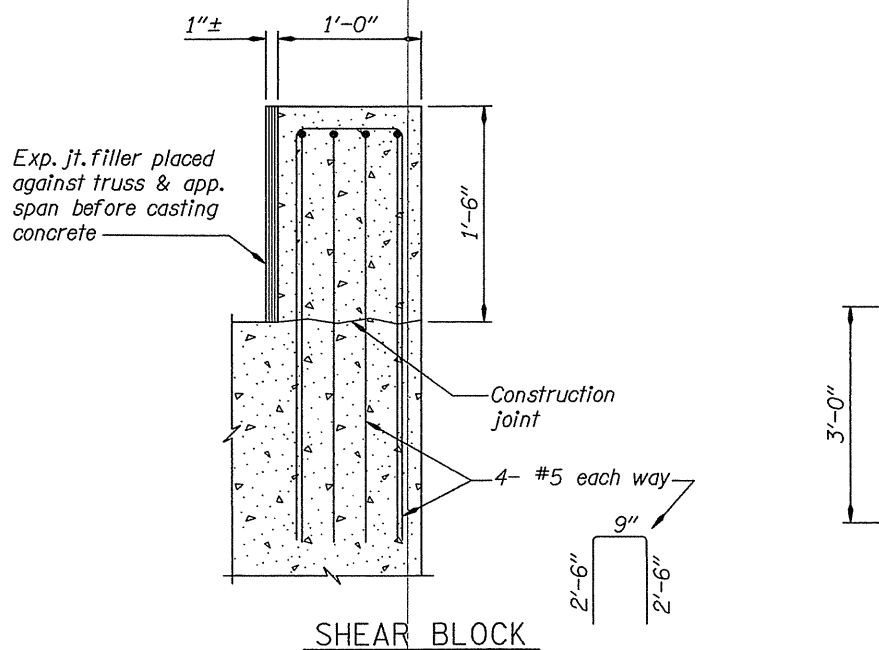
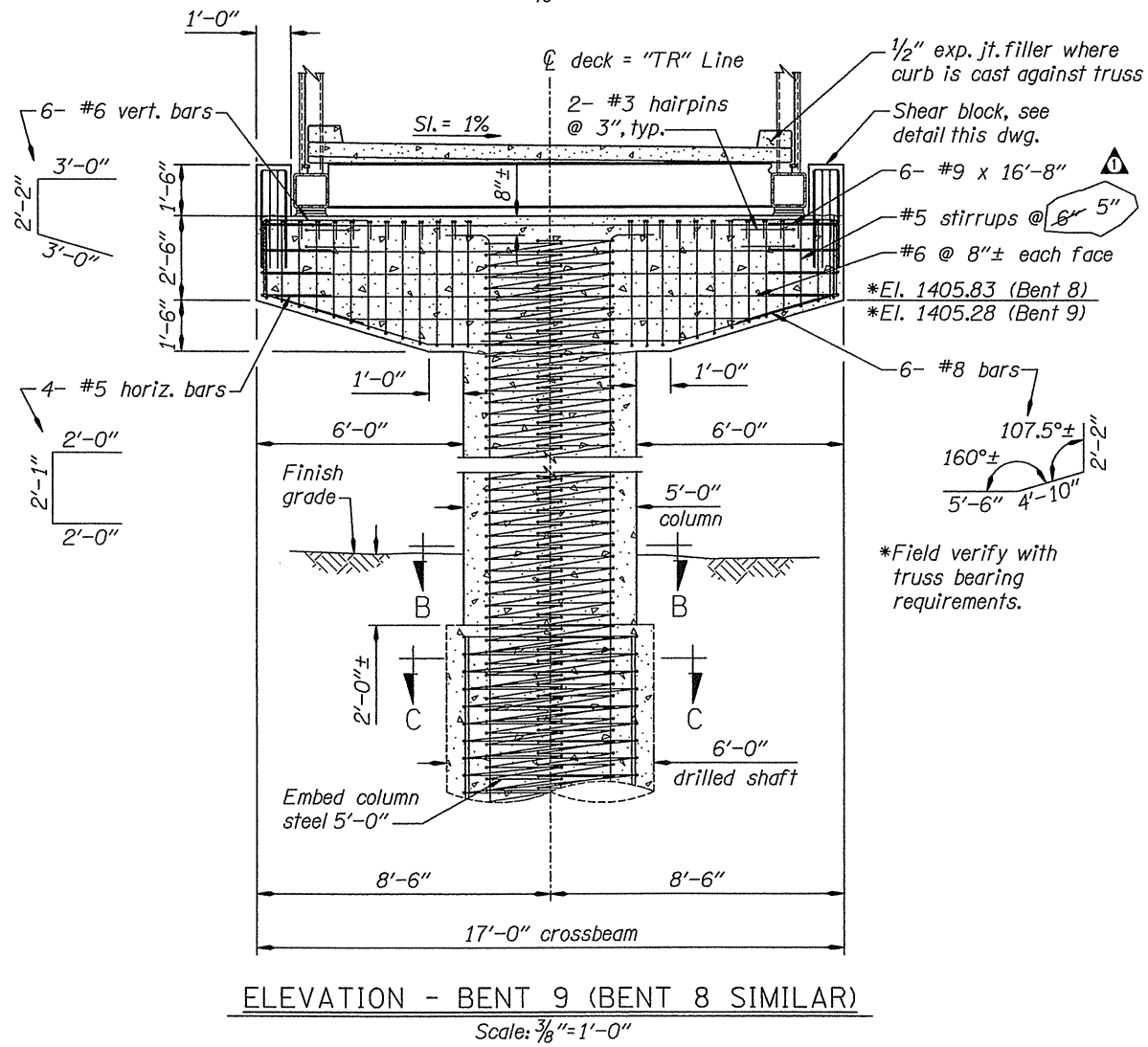
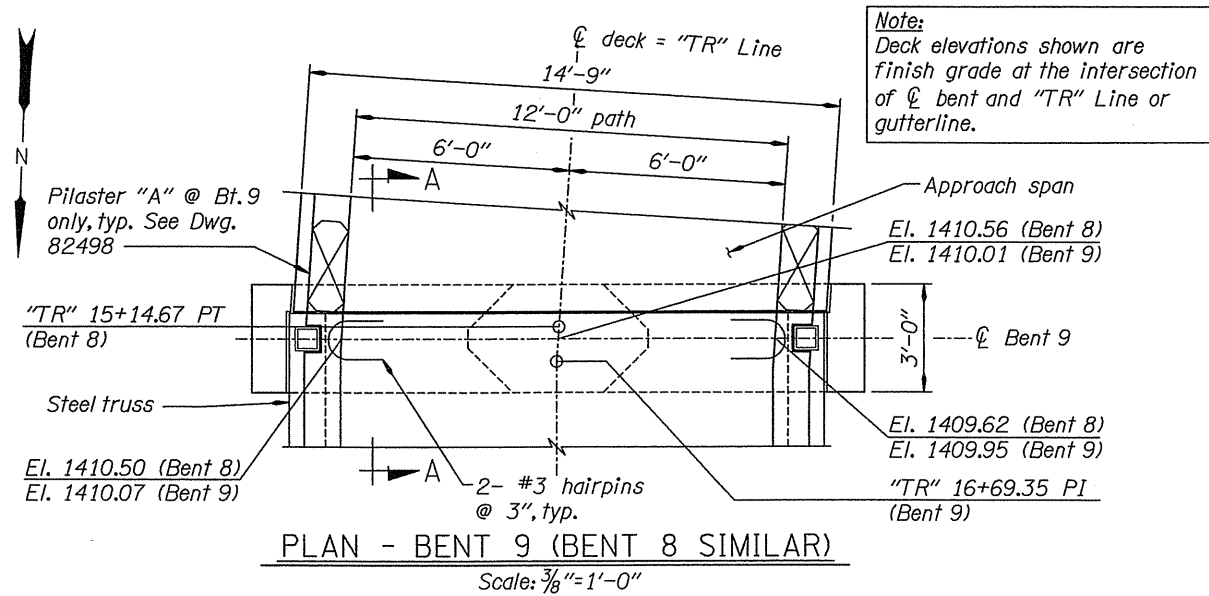
Corporate Office: 920 COUNTRY CLUB ROAD, SUITE 100B EUGENE, OREGON 97401-6089
 2235 MISSION STREET SE, SUITE 100 SALEM, OREGON 97302-1295
 831 OHARE PARKWAY, MEDFORD OREGON 97504-4005
 5005 SW MEADOWS ROAD, SUITE 120, LAKE OSWEGO OREGON 97004-4288

STRUCTURE NO. 21193
 DATE July 2009
 CALC. BOOK 6130

PEDESTRIAN OVER BARNETT ROAD
 BEAR CREEK GREENWAY TRAIL
 BARNETT ROAD - BLUE HERON PARK, UNIT 2C
 JACKSON COUNTY

TYPICAL INTERIOR BENT DETAILS

SHEET 13 OF 21
 DRAWING NO. 82494



WARNING:
IF THIS BAR DOES NOT MEASURE 1" THEN DRAWING IS NOT TO SCALE.



DATE	REVISION	BY
9/10/09	Revised stirr. & spiral spacing	JBL

ACCOMPANIED BY DWGS. See Dwg. 82482 for this structure.

DESIGNER: S. Wolfer
CHECKER: Michael L. Hawkins, PE
REVIEWER: Gary E. Rayer, SE, PE

DESIGNER
REGISTERED PROFESSIONAL ENGINEER
69,884
J. BEAD LARSEN
EXPIRES: 12/31/2010

OREGON DEPARTMENT OF TRANSPORTATION

OBEC CONSULTING ENGINEERS
www.obec.com

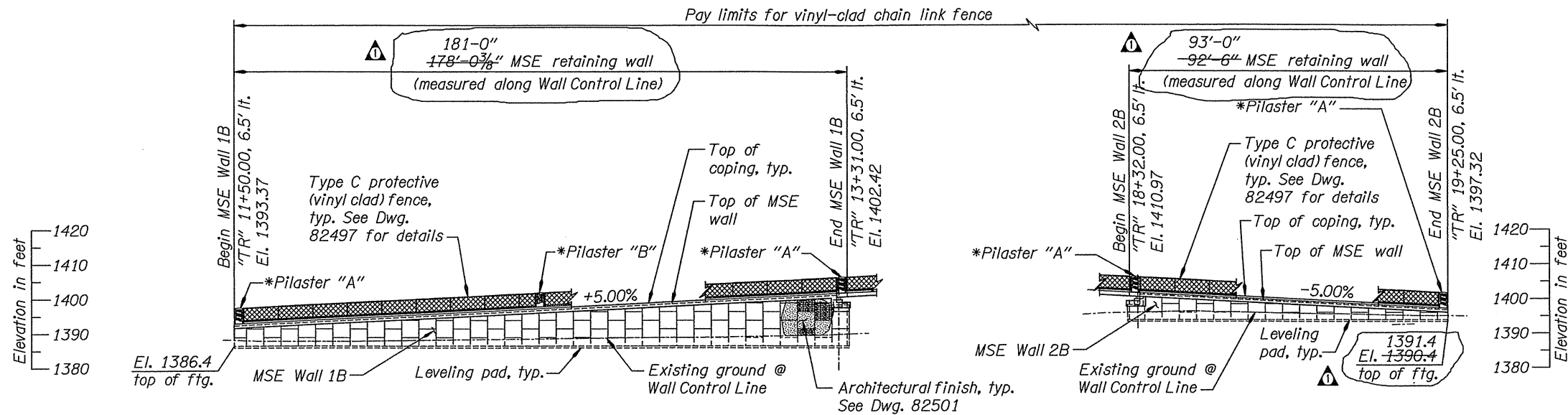
Corporate Office: 920 COUNTRY CLUB ROAD, SUITE 100B EUGENE, OREGON 97401-6089
2235 MISSION STREET SE, SUITE 100 SALEM, OREGON 97302-1265
631 OHARE PARKWAY, MEDFORD OREGON 97504-4005
5005 SW MEADOWS ROAD, SUITE 120, LAKE OSWEGO OREGON 97504-4288

STRUCTURE NO. 21193
DATE July 2009
CALC. BOOK 6130

PEDESTRIAN OVER BARNETT ROAD
BEAR CREEK GREENWAY TRAIL
BARNETT ROAD - BLUE HERON PARK, UNIT 2C
JACKSON COUNTY

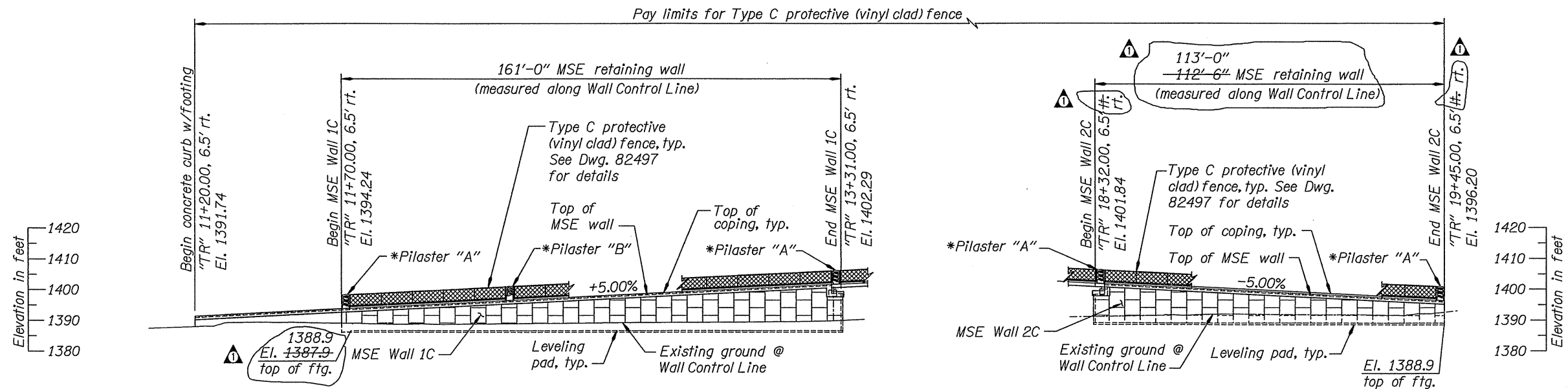
BENTS 9 DETAILS (BENT 8 SIMILAR)

SHEET 15 OF 21
DRAWING NO. 82496



DEVELOPED ELEVATION - MSE WALLS 1B AND 2B (LOOKING OUT)
Scale: 1"=20'

*Decorative pilaster with Face "A" or Face "B" architectural inset. See Dwg. 82498 for details.



DEVELOPED ELEVATION - MSE WALLS 1C AND 2C
Scale: 1"=20'

Note:
Vertical datum: NGVD 29 (47) (converted to International Feet) per ODOT control from Survey Number 17166

WARNING:
IF THIS BAR DOES NOT MEASURE 1" THEN DRAWING IS NOT TO SCALE.



DATE	REVISION	BY
9/10/09	Corrected dimensions	JBL

DRAFTER: S. Wolfer
 DESIGNER: [Signature]
 CHECKER: Michael L. Hawkins, PE
 REVIEWER: Gary E. Royor, SE, PE

DESIGNER

OREGON DEPARTMENT OF TRANSPORTATION

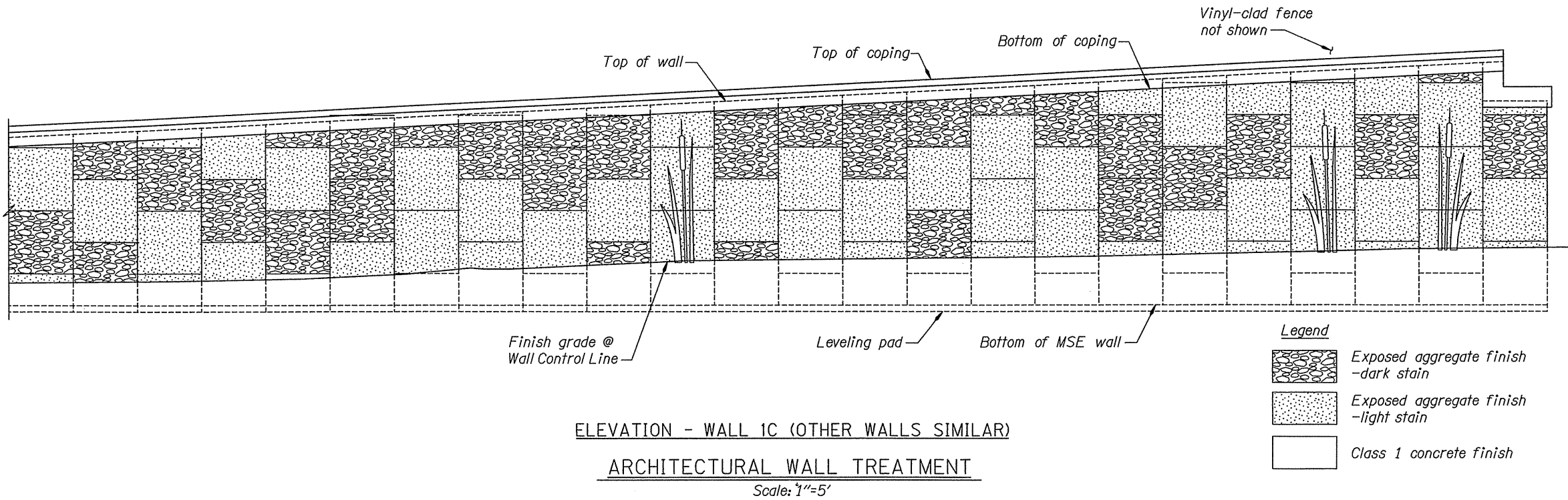
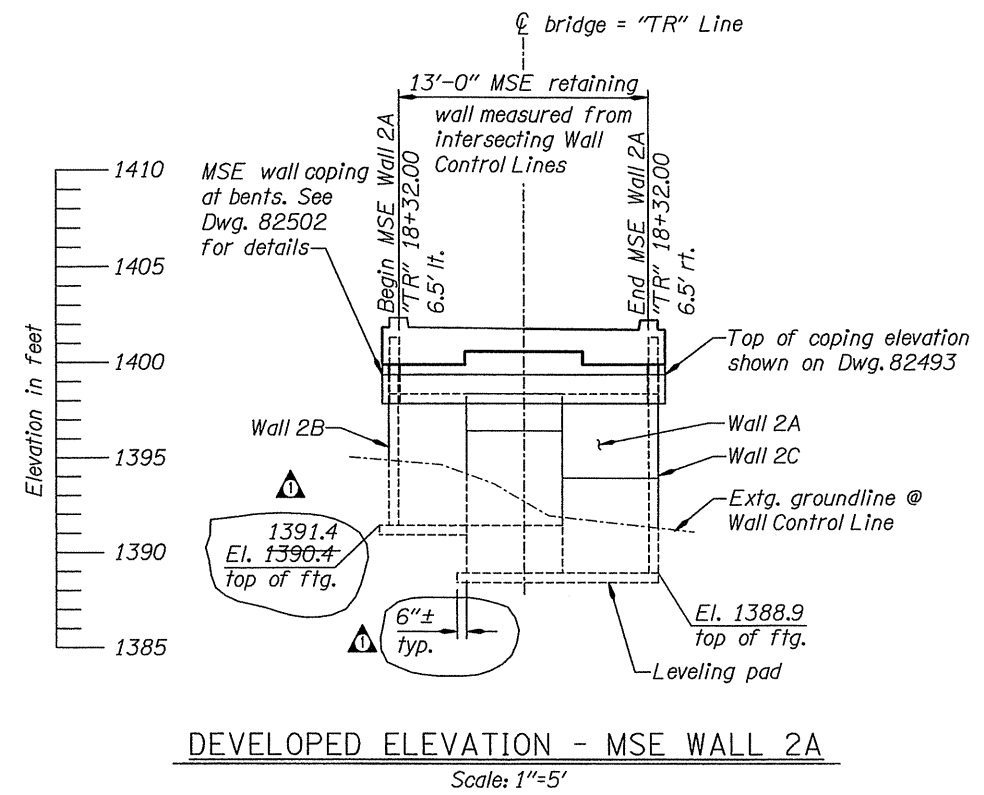
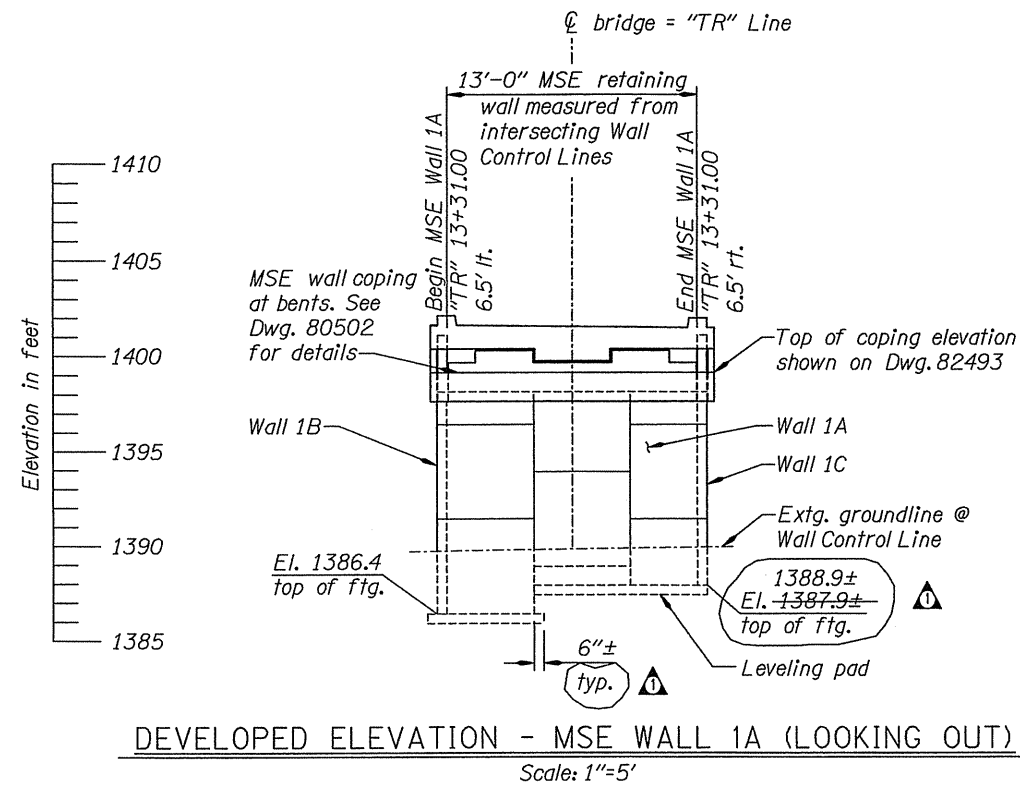
Corporate Office: 920 COUNTRY CLUB ROAD, SUITE 100B EUGENE, OREGON 97401-6089
 2235 MISSION STREET SE, SUITE 100 SALEM, OREGON 97302-1235
 831 OHARE PARKWAY, MEDFORD OREGON 97504-4005
 5005 SW MEADOWS ROAD, SUITE 120, LAKE OSWEGO OREGON 97504-4288

STRUCTURE NO.	21193
DATE	July 2009
CALC. BOOK	6130

PEDESTRIAN OVER BARNETT ROAD
 BEAR CREEK GREENWAY TRAIL
 BARNETT ROAD - BLUE HERON PARK, UNIT 2C
 JACKSON COUNTY

ELEVATION - MSE WALLS 1B, 1C, 2B & 2C

SHEET	19
OF	21
DRAWING NO.	82500



WARNING:
IF THIS BAR DOES NOT MEASURE 1" THEN DRAWING IS NOT TO SCALE.



DATE	REVISION	BY
9/10/09	Corrected dimensions	JBL

ACCOMPANIED BY DWGS. See Dwg. 82482 for this structure

DRAFTER:	S. Wolfer
DESIGNER:	<i>[Signature]</i>
CHECKER:	Michael L. Hawkins, PE
REVIEWER:	Gary E. Rayer, SE, PE

DESIGNER

REGISTERED PROFESSIONAL ENGINEER
69,894
[Signature]
OREGON
MAY 18, 2004
E. BRAD LARSEN

EXPIRES: 12/31/2010

OREGON DEPARTMENT OF TRANSPORTATION

Corporate Office: 920 COUNTRY CLUB ROAD, SUITE 100B EUGENE, OREGON 97401-6089
2235 MISSION STREET SE, SUITE 100 SALEM, OREGON 97302-1295
831 OHARE PARKWAY, MEDFORD OREGON 97504-4005
5025 SW MEADOWS ROAD, SUITE 120, LAKE OSWEGO OREGON 97504-4288

OBEC CONSULTING ENGINEERS
www.obec.com

STRUCTURE NO.	21193
DATE	July 2009
CALC. BOOK	6130

PEDESTRIAN OVER BARNETT ROAD
BEAR CREEK GREENWAY TRAIL
BARNETT ROAD - BLUE HERON PARK, UNIT 2C
JACKSON COUNTY

ELEVATION - MSE WALLS 1A & 2A

SHEET	20
OF	21
DRAWING NO.	82501

