



U.S. DEPARTMENT OF
ENERGY

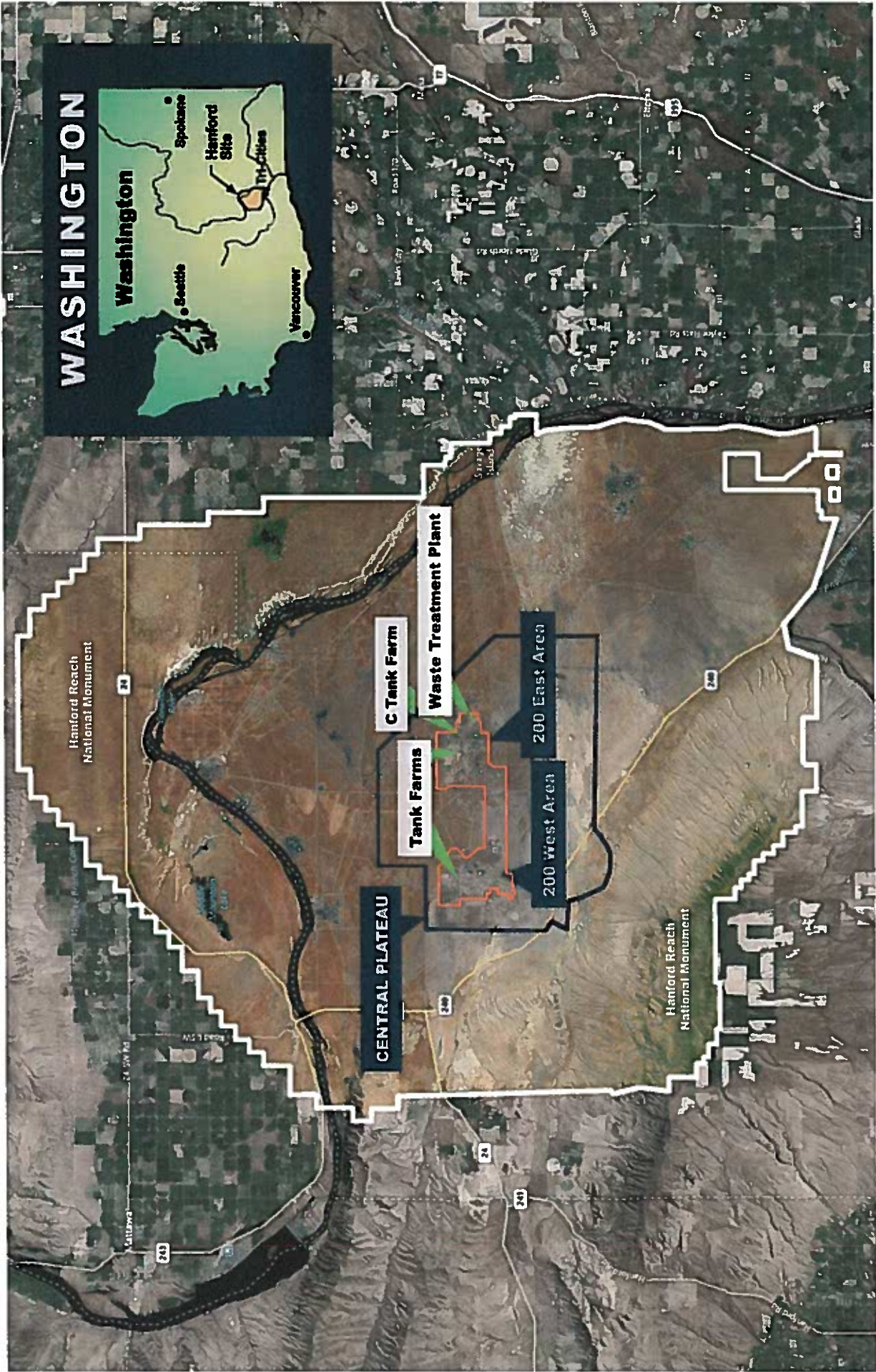
OFFICE OF
ENVIRONMENTAL
MANAGEMENT

Introduction to the Draft Waste Incidental to Reprocessing (WIR) Evaluation for Waste Management Area C (WMA C)

July 2018

- Answer the big picture questions:
 - What is a WIR Determination?
 - What does the WIR Determination allow DOE to do?
 - Has DOE made other Determinations?
 - How are WIR Determinations made
 - WIR Decision Process
 - WIR Criteria
 - How to submit comments

WASHINGTON



What is a WIR Determination?

A WIR Determination is a decision that waste is appropriate for management as non-high level waste.

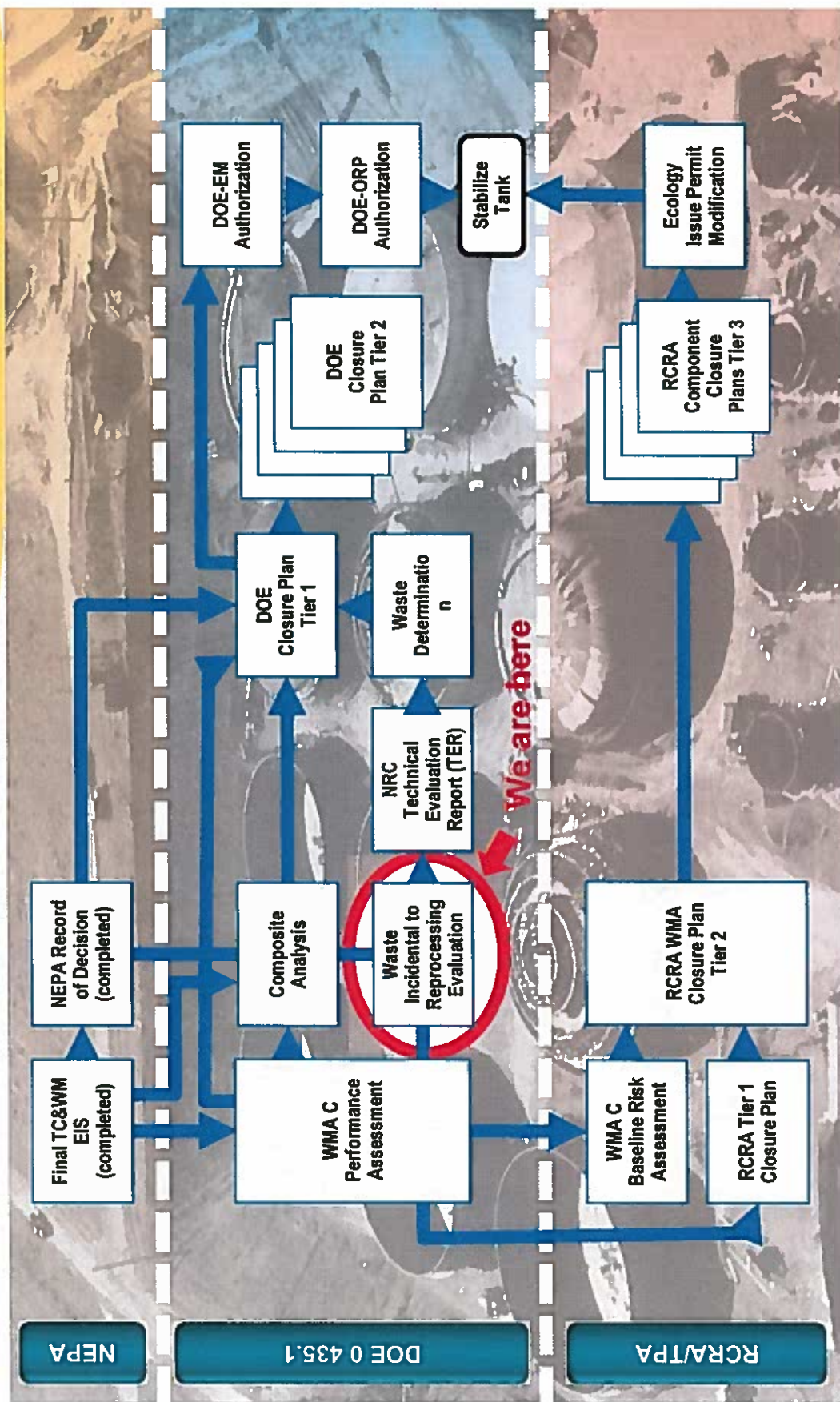
The WIR Evaluation is developed to demonstrate that the stabilized waste residuals, the waste tanks, and the ancillary structures (including integral equipment) in WMA C at the time of closure meet the WIR criteria and, therefore, are not high-level waste.

Residuals - Residual waste remaining in a waste tank or ancillary structure following completion of waste retrieval activities and removal of key radionuclides to the maximum extent that is technically and economically practical.

Stabilization - Stabilization will be carried out by filling the tanks with grout at the completion of waste retrieval activities. Ancillary structures will also be filled with an appropriate material, as necessary, to prevent subsidence.

This process is not intended to address contaminated soils or groundwater

Regulatory Processes for Tank Closure



Has DOE made other Determinations?

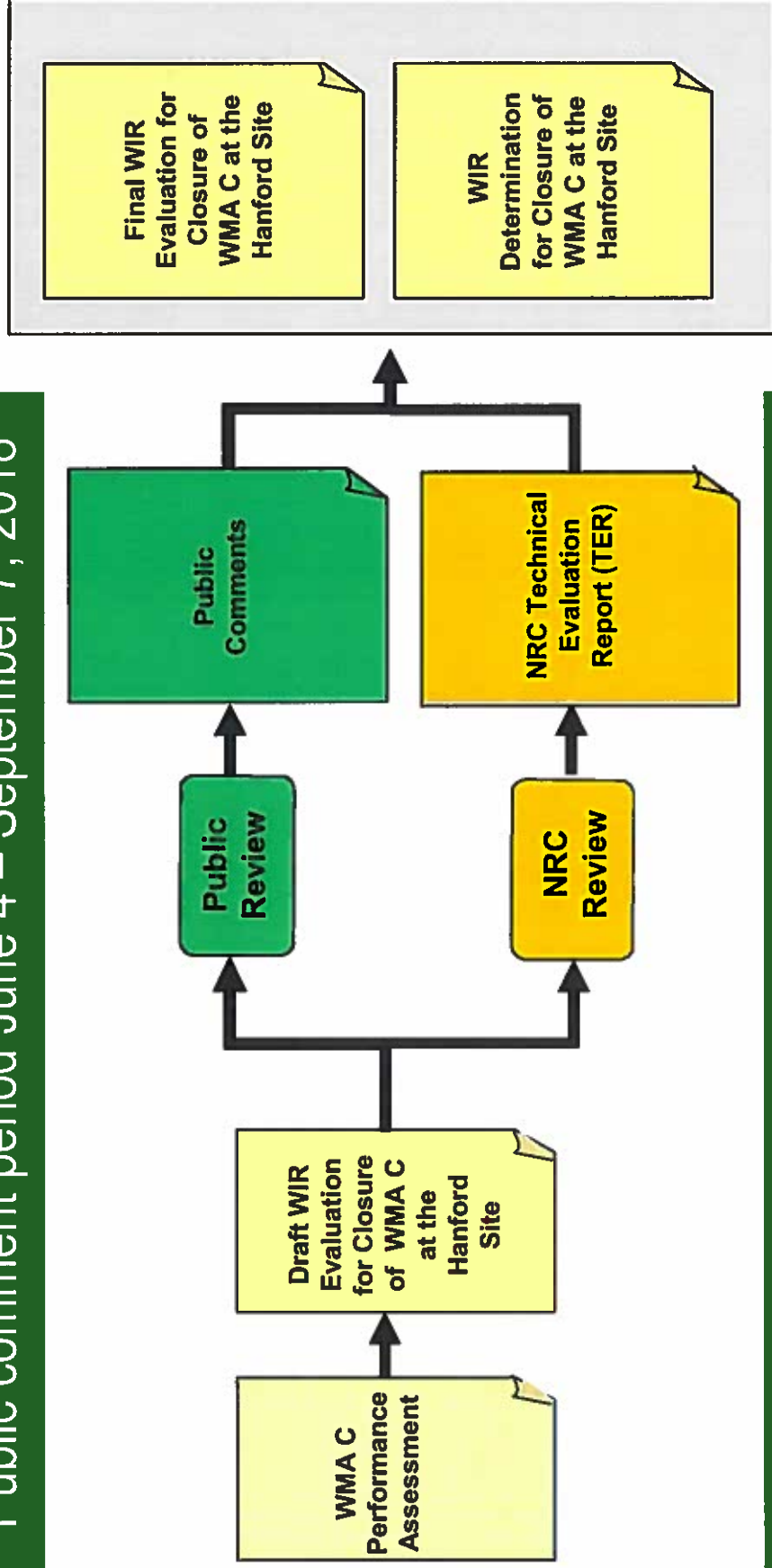
- *Section 3116 Determination for Salt Waste Disposal at Savannah River Site (January 2006)*
- *Section 3116 Determination for the Idaho Nuclear Technology and Engineering Center Tank Farm Facility at the Idaho National Laboratory (November 2006) – 11 Tanks Closed*
- *Section 3116 Determination for F-Tank Farm at the Savannah River Site (March 2012) – 4 Tanks Closed*
- *WIR Determination for West Valley Concentrator Feed Makeup Tank and Melter Feed Hold Tank (February 2013)*
- *Section 3116 Determination for H-Tank Farm at the Savannah River Site (December 2014) – 2 Tanks Closed*

How are Determinations Made?

- Section 3116 Ronald W. Reagan National Defense Authorization Act for Fiscal Year 2005 (Public Law 108-375)
 - Applies to South Carolina and Idaho only
- DOE Order and Manual 435.1-1, Radioactive Waste Management
 - Applies to all other DOE sites
 - WMA C Draft WIR Evaluation

Same process and similar criteria used to make all determinations.
Comparison between the two methods provided in Appendices A and B of the Draft WIR Evaluation.

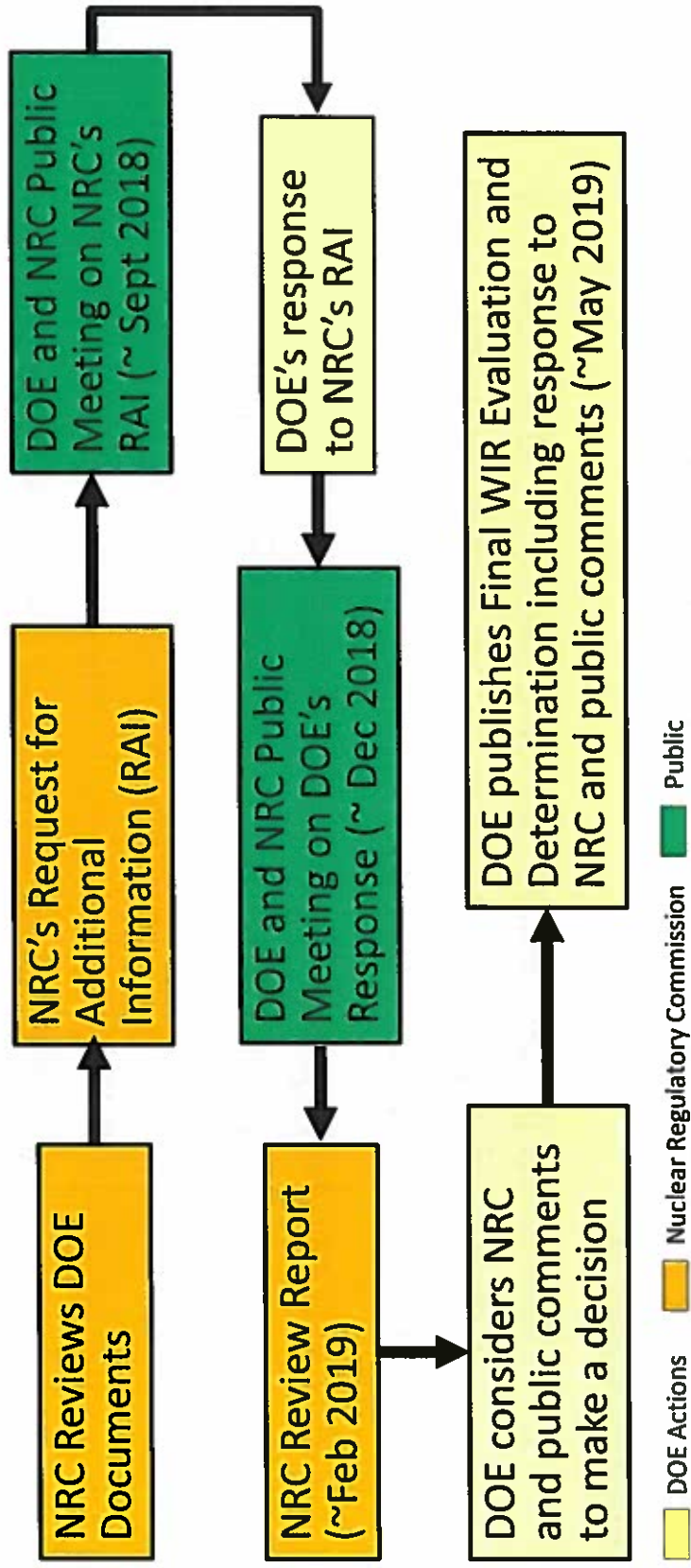
Public comment period June 4 – September 7, 2018



NRC consultation ~ 9 month open public process

Yellow box: DOE Actions; Orange box: Nuclear Regulatory Commission; Green box: Public

NRC Review Process



All dates are estimates, subject to change. Public meetings are intended for DOE and NRC discussion with public invited to observe and comment at the end of meeting. DOE shares all public comments with NRC. DOE and NRC may, if mutually agreed, have technical staff to staff, non-decision conference calls to ask clarification type questions and if used, will post a public meeting summary.

DOE Manual 435.1-1 Chapter II, section B(2)(a) provides in pertinent part that wastes determined to be incidental to reprocessing:

1. Have been processed, or will be processed, to remove key radionuclides to the maximum extent that is technically and economically practical; and
2. Will be managed to meet safety requirements comparable to the performance objectives set out in 10 CFR 61 Subpart C...; and
3. Are to be managed, pursuant to DOE's authority under the [AEA]..., provided the waste will be incorporated in a solid physical form at a concentration that does not exceed the applicable concentration limits for Class C LLW as set out in 10 CFR 61.55...

Where is the Draft WIR Evaluation

Online: <https://www.hanford.gov/page/WasteManagementAreaC>

U.S. DOE Public Reading Room
1000 Independence Avenue, SW
Washington, DC 20585

Phone: (202) 586-5955

U.S. DOE Public Reading Room
2770 University Drive, Room 101L
Richland, WA 99354

Phone: (509) 372-7303

How to Submit Comments

Written comments may be submitted via email to:

WMACDRAFTWIR@rl.gov

Or postal mail to:

Mr. Jan Bovier
U.S. Department of Energy, Office of River Protection
P.O. Box 450, MSIN H6-60
Richland, WA 99354

Submit comments by Friday, September 7, 2018

Questions?

The Hanford Reach
White Bluffs Overlooking the Columbia River

