



# The Developmental Crisis

*Wait time is over 365 days –  
what is a clinician to do...*



## Conflicts of interest

- Planning Committee & Faculty Disclosure: The Planning Committee and Faculty have no relevant financial relationships with commercial interests to disclose.



## Objectives:

- To understand the current state of Developmental Pediatrics
- To develop or enhance awareness of services available to families prior to obtaining a diagnosis as well as opportunities available to develop and boost current assessment and evaluation skills around autism.
- To provide awareness of the current work being done in the Portland area to address this crisis



## Who am I?

- Completed medical training in San Antonio, Texas including pediatric residency
- Was a self-employed general pediatrician in Coos Bay for over 20 years
- Served as CMO for Coast Community Health Center in Bandon, Oregon
- Joined Providence in August 2019 as Senior Regional Medical Director for Children's Health
- Became Executive Medical Director of Children's Health in February 2021





**HOPE**  
MAY NOT BE WARRANTED AT THIS POINT.



# The Developmental Crisis

- According to the CDC:
  - About 1 in 44 children has been identified with autism spectrum disorder (ASD)
  - ASD is reported to occur in all racial, ethnic, and socioeconomic groups.
  - ASD is more than 4 times more common among boys than among girls







## The Developmental Crisis

- Workforce Shortage
  - Less than 750 board certified DBPs
  - 29 states have less than one DBP per 100,000 children
  - More DBPs retiring than fellows entering practice





# The Developmental Crisis

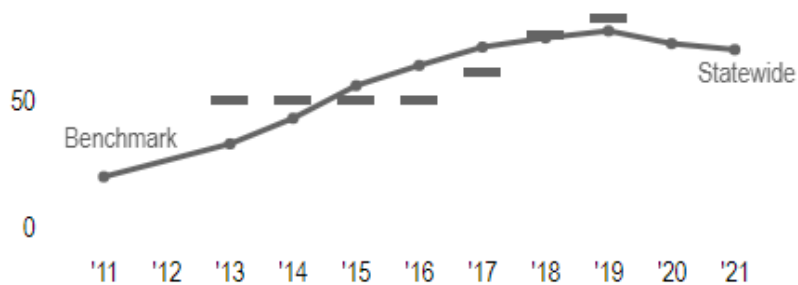
- Workforce Shortage
  - 48 DBP Fellowship positions
  - In 2022 only 26 positions filled (54%)
  - Seeking part-time positions







# The Developmental Crisis



Denominator (n) is only available statewide to protect confidentiality

- More children being screened
- OHP Quality Incentive Metric
  - 2011 – 20.9%
  - 2021 – 68%
  - 2019 – 80%



# INNOVATION

WE REGRET TO INFORM YOU THAT THE FLYING CARS WE PROMISED AREN'T FEASIBLE,  
BUT WE DO HOPE YOU'LL ENJOY THE SPYING VACUUMS.

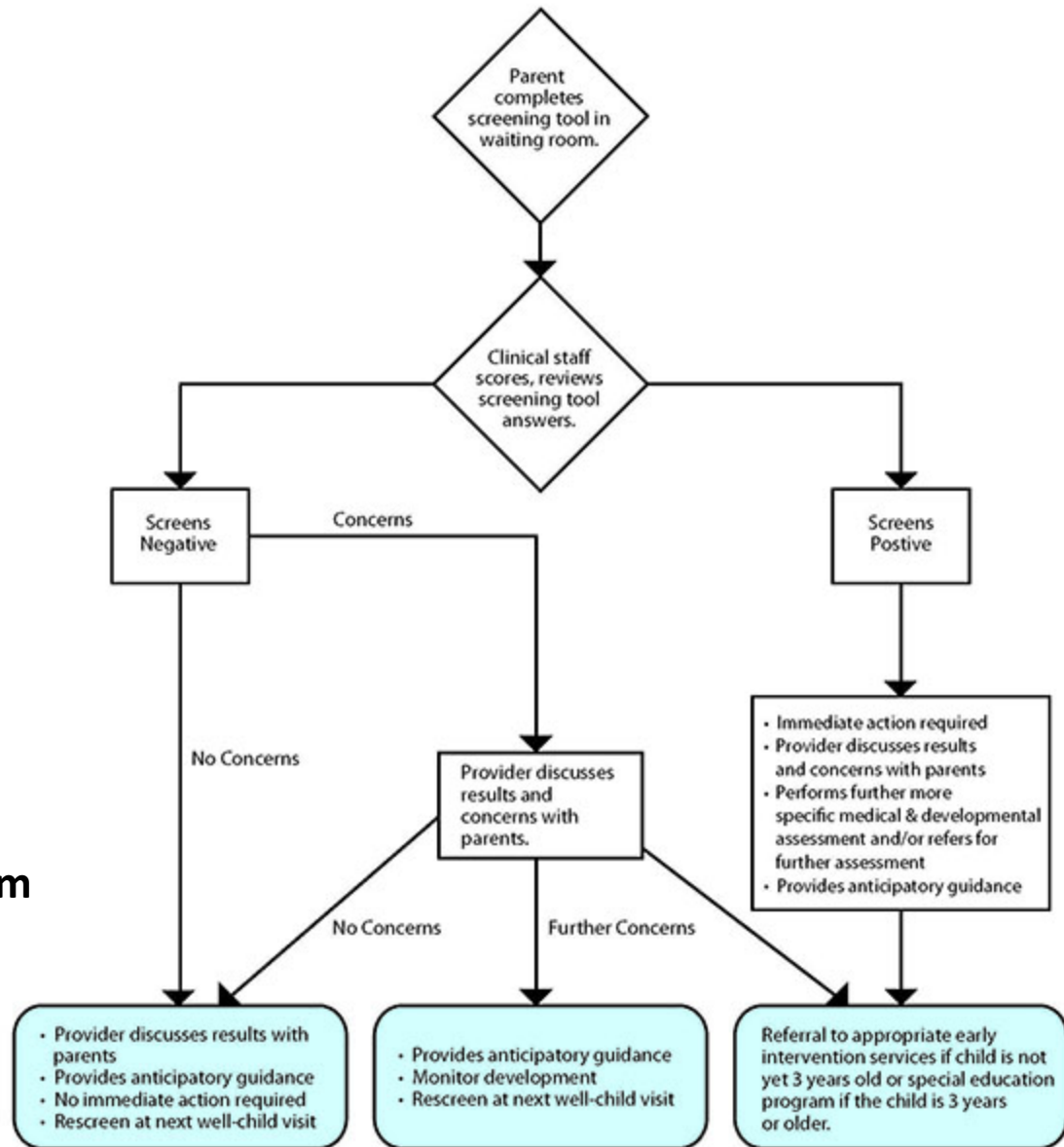


## Where do we go from here?



- Engage general pediatricians in providing assessments for more straightforward patients
- Developmental Care programs utilize more NPs and focus on assessment with long term management overseen by primary care clinicians

# Pediatric Developmental Screening Flowchart



<https://www.cdc.gov/ncbddd/autism/hcp-screening.html>



## Clinician Tools

- Know the DSM-5 Criteria
- Screen for autism at 18 mos and 24 mos
- Many screening tools
  - ASQ, CSBS, PEDS, MCHAT, STAT
- Diagnostic Tools
  - ADI-R, ADOS-G, CARS, GARS-2







## Payer Issues



- In general screening tools are covered by payers
- Diagnostic tools may be covered also
- Consider using time based coding
- *ABA therapy prescription should come from clinician who can diagnose autism – this is a problem*



## Autism Alert

- Family is referred to Autism Alert by PCP when there is a concern for autism
- Family navigator contacts family to offer education and assistance with forms/referrals and transportation needs



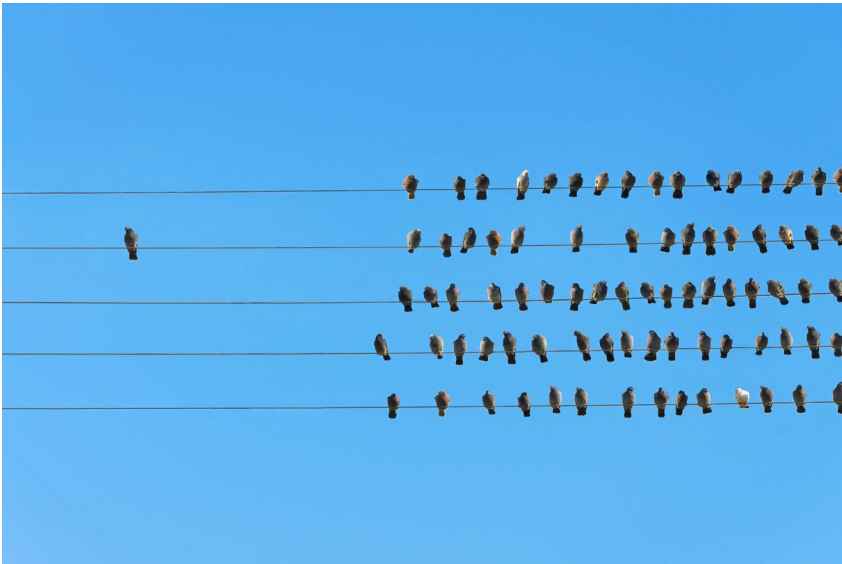


## Other areas Swindells can help

- Help Me Grow Oregon
- Autism Society Oregon
- Autism Empowerment
- Spectrum Magazine
- Oregon Family to Family
- FACT Oregon- school support
- County Developmental Disability Programs
- Early Intervention
- SSI
- OHP
- Medical Appt Transportation- Ride to Care
- ABA Resource list- available through each patient's individual insurance company
- 211 for general resource info



# Swindells Resource Center



- Phone: 503-215-2429 (Portland area)  
541-732-5958 (Medford area)
- Email: [swindells@providence.org](mailto:swindells@providence.org)
- Located at:
  - PCC: 830 NE 47th Ave, Portland
  - St. V: 9135 SW Barnes Road, Suite 561, Portland, OR 97225
  - Medford: 840 Royal Avenue, Suite 110, Medford, OR 97504



## Most important thing you can do

Refer to Early Intervention Program if any developmental concerns – Do not wait for a Diagnosis.





© DESPAIR.COM

# CHALLENGES

I EXPECTED TIMES LIKE THIS- BUT NEVER  
THOUGHT THEY'D BE SO BAD, SO LONG, AND SO FREQUENT.



# Autism Assessment Capacity Project

- Began in late 2021 – was facilitated by the Children's Health Alliance and Oregon Center for Children and Youth with Special Health Needs (OCCYSHN)
- Started with Developmental Programs at Providence, OHSU and Legacy



# Autism Assessment Capacity Project

- Now includes partners from many areas including
  - Kaiser
  - Health Share and Care Oregon
  - Help Me Grow
  - Autism Commission and Autism Society of Oregon
  - Pediatricians
  - OPIP
- **Three Workgroups**
  - PCP Resources
  - Family Resources
  - System Issues



# Autism Assessment Capacity Project

- Objectives
  - Identify strategies to improve access to autism assessment in the region





# Autism Assessment Capacity Project



- Funding
- The Financial Investment Oversight Committee (FIOC) of Health Share approved \$3.178 million with \$1 million held in reserve





# Autism Assessment Capacity Project

- Next Steps
  - Hire Project Manager to oversee the whole project
  - Includes working with business consultant to determine feasibility of creating a multi-health system Regional Autism Assessment Center





# Autism Assessment Capacity Project



- Next Steps
  - Hire Education Manager who will oversee training and education of PCPs in order to improve capacity in the community to provide autism assessment as well as family supports



# Autism Assessment Capacity Project

- Next Steps in Education
  - Expand Autism Alert
  - Clinician engagement in Autism ECHO
  - STAT training
  - Other identified needs





# HOPE

Once you choose hope, anything's possible!

—Christopher Reeve



QUESTIONS?