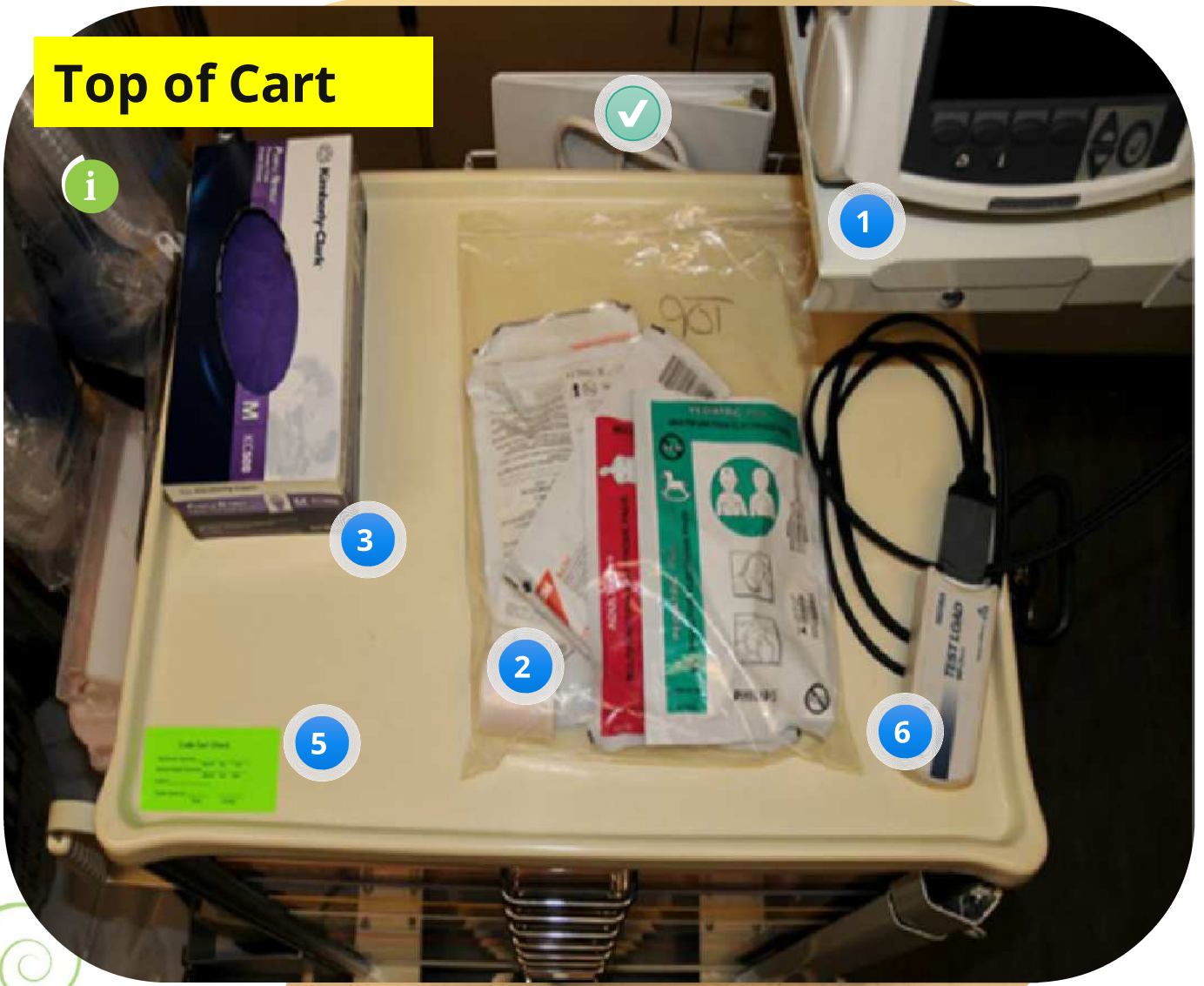


Code Cart Tour-Around the Cart

Top of Cart



Code Cart Tour-Around the Cart

Left Side

i



Suction machine shelf with:

- portable suction machine
- suction canister with lid
- suction tubing
- yankauer



Code Cart Tour-Around the Cart

Right Side

i



Back of Cart

i



Code Blue notebook Includes:

- Inventory list for Broselow cart
- Daily Code cart check sheets
- Pediatric and adult cardiopulmonary arrest record
- PALS algorithms

NEXT

Pharmacy Drawer

In this drawer is found medications found in the PALS algorithm.

There is an anaphylaxis kit containing all the supplies need for IM dose of epinephrine 1mg/ml with dosages calculated & printed to draw up from 1 ml vials

A pre-mixed Dopamine 800mg/250ml bag, a 50 ml IV bag of 0.9% NS, and a D5W 100ml IV bag will be in this drawer

Key Note: The med Nurse will need to be handed a bag from the bottom drawer containing flushes and medication resources

OK

Pharmacy Drawer



Pink/Red

Pink/Red Drawer has four bags one IV/IO, one Basic Airway and two Advanced Airway bags one for pink/red and one for gray.

ALL Advance Airway bags in the cart contain supplies appropriate for patient size:

Colorimetric CO2 detector (Pedi easy cap)

Laryngeal mask airway

Endotracheal tubes (ETT)

ETT depth card

Syringe

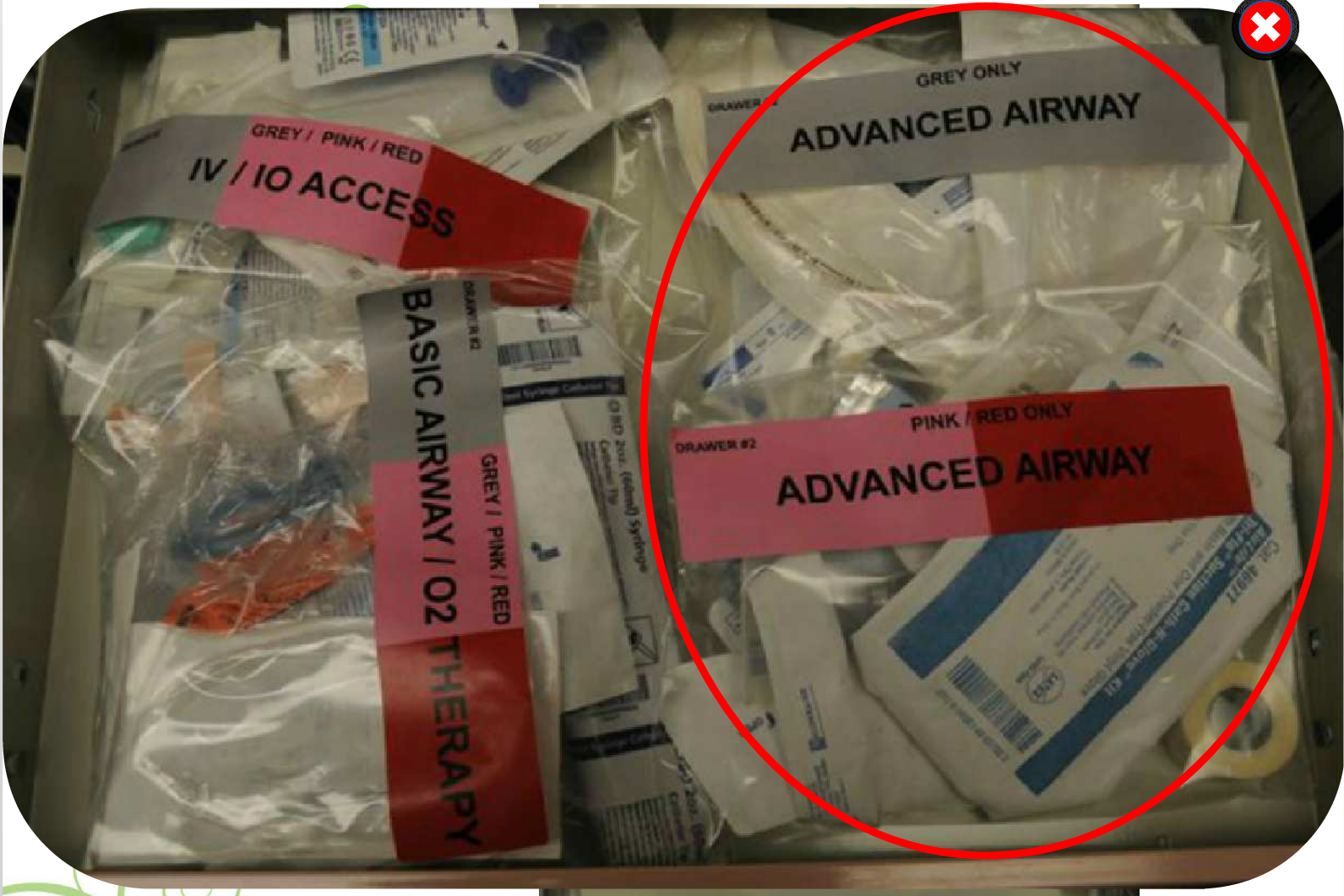
Stylet

Disposable fiberoptic laryngoscope blade (Miller and Mac)

Suction cath kit

Waterproof tape and mastisol

OK



Purple Drawer

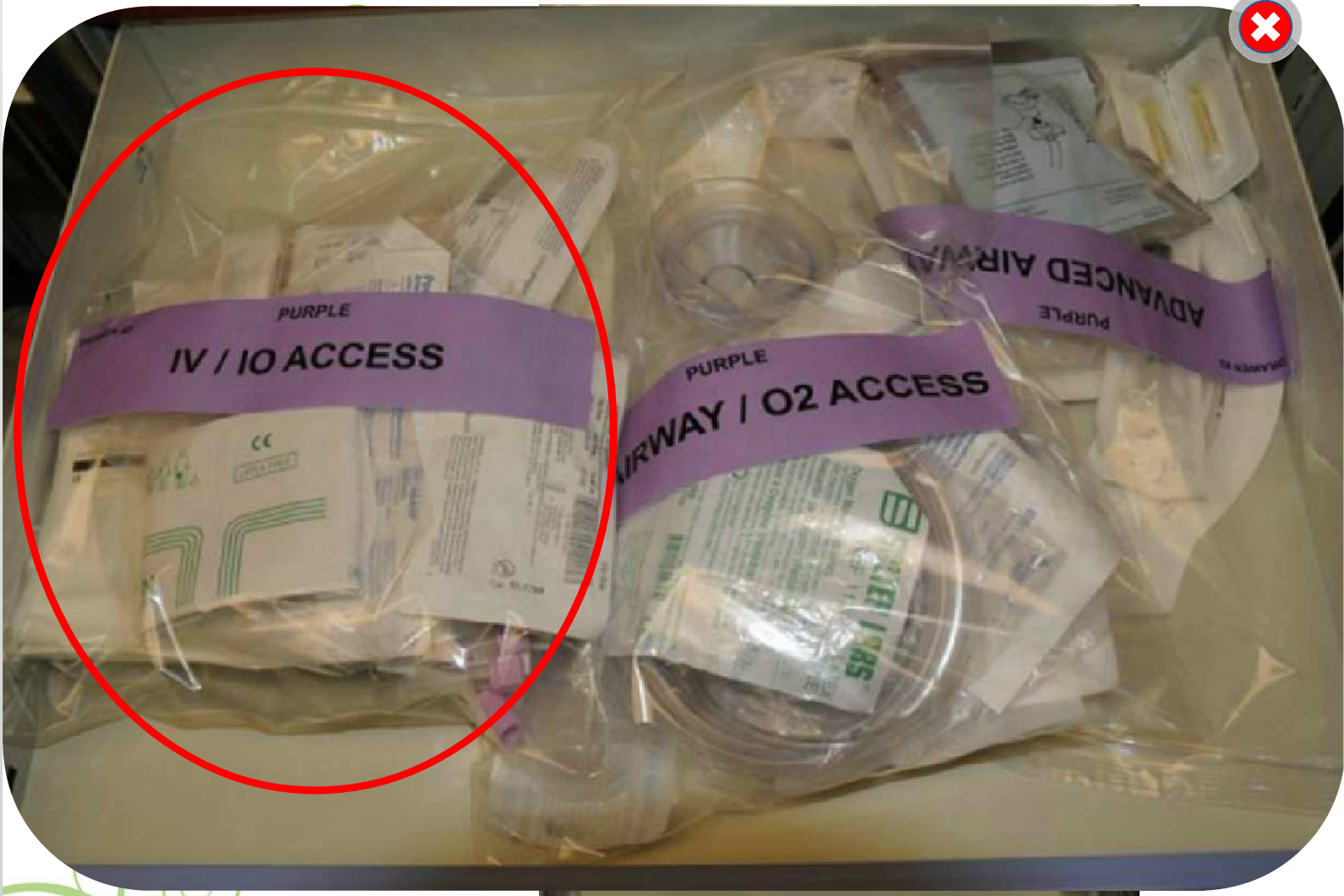
The Purple Drawer has three bags:

- IV/IO
- Basic Airway
- Advanced Airway

ALL IV/IO bags in the cart contain supplies appropriate for patient size for:

- IV start
- blood draws
- Heel Sticks
- IO access
- BP Cuff

OK



Yellow Drawer

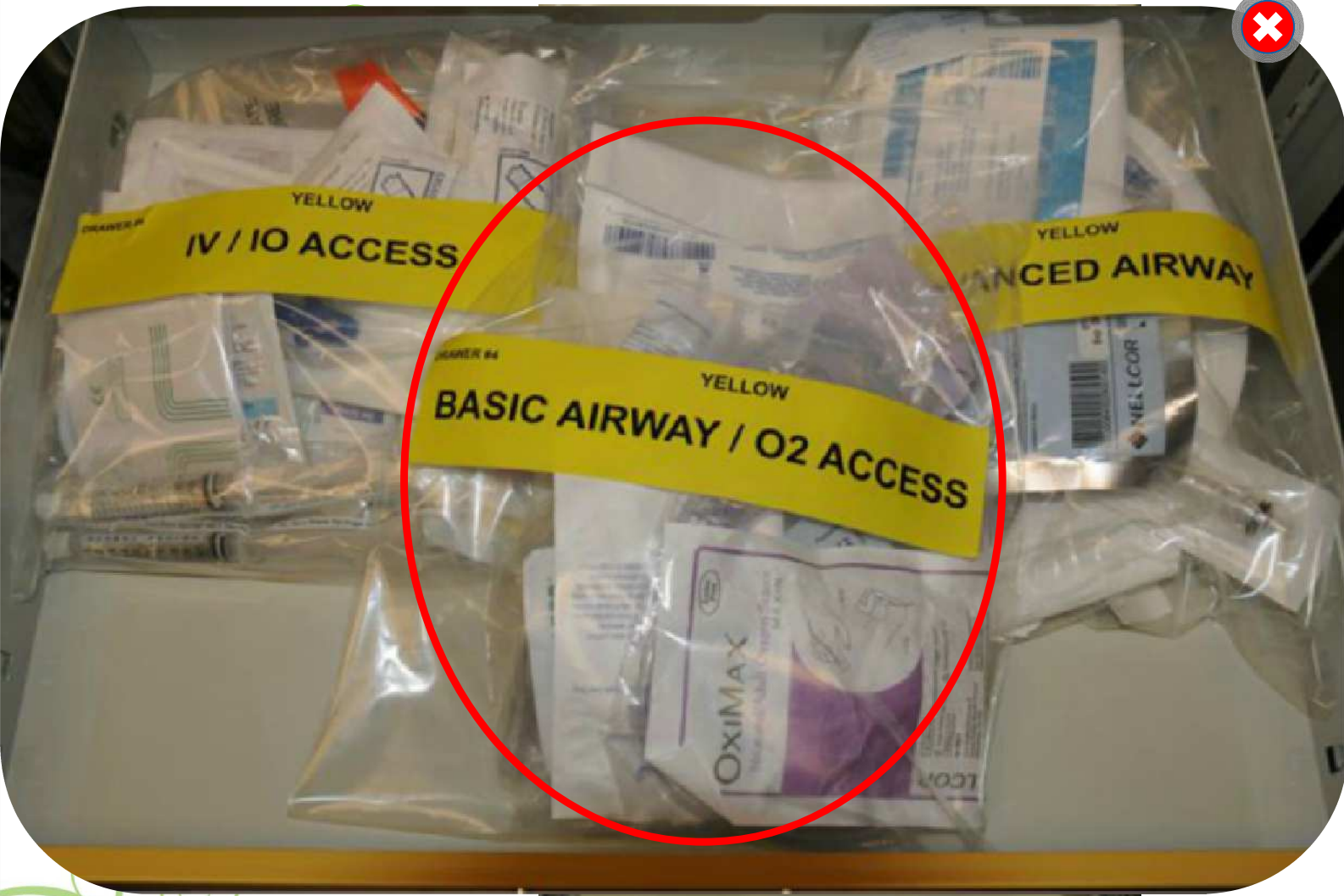
The Yellow Drawer has three bags:

- IV/IO
- Basic Airway
- Advanced Airway

ALL Basic Airway bags in the cart contain supplies appropriate for patient size for:

- Resuscitation Mask (hand ventilate)
- Nasal and oral airways
- Non-rebreather face mask
- Nasal cannula
- Salem Sump NG
- 60ml syringe (cath tip)
- Pulse Oximeter probe
- BBG

OK



YELLOW
DRAWER #4
IV / IO ACCESS

YELLOW
ADVANCED AIRWAY

YELLOW
DRAWER #4
BASIC AIRWAY / O2 ACCESS

OXIMAX
Non-Invasive SpO2 Sensor
1 & 2 Lead

MELCOR

White Drawer

The White Drawer has three bags:

- IV/IO
- Basic Airway
- Advanced Airway

OK

ALL bags in the cart contain supplies appropriate for patient size

Blue Drawer

The Blue Drawer has three bags:

- IV/IO
- Basic Airway
- Advanced Airway

OK

ALL bags in the cart contain supplies appropriate for patient size

Green Drawer

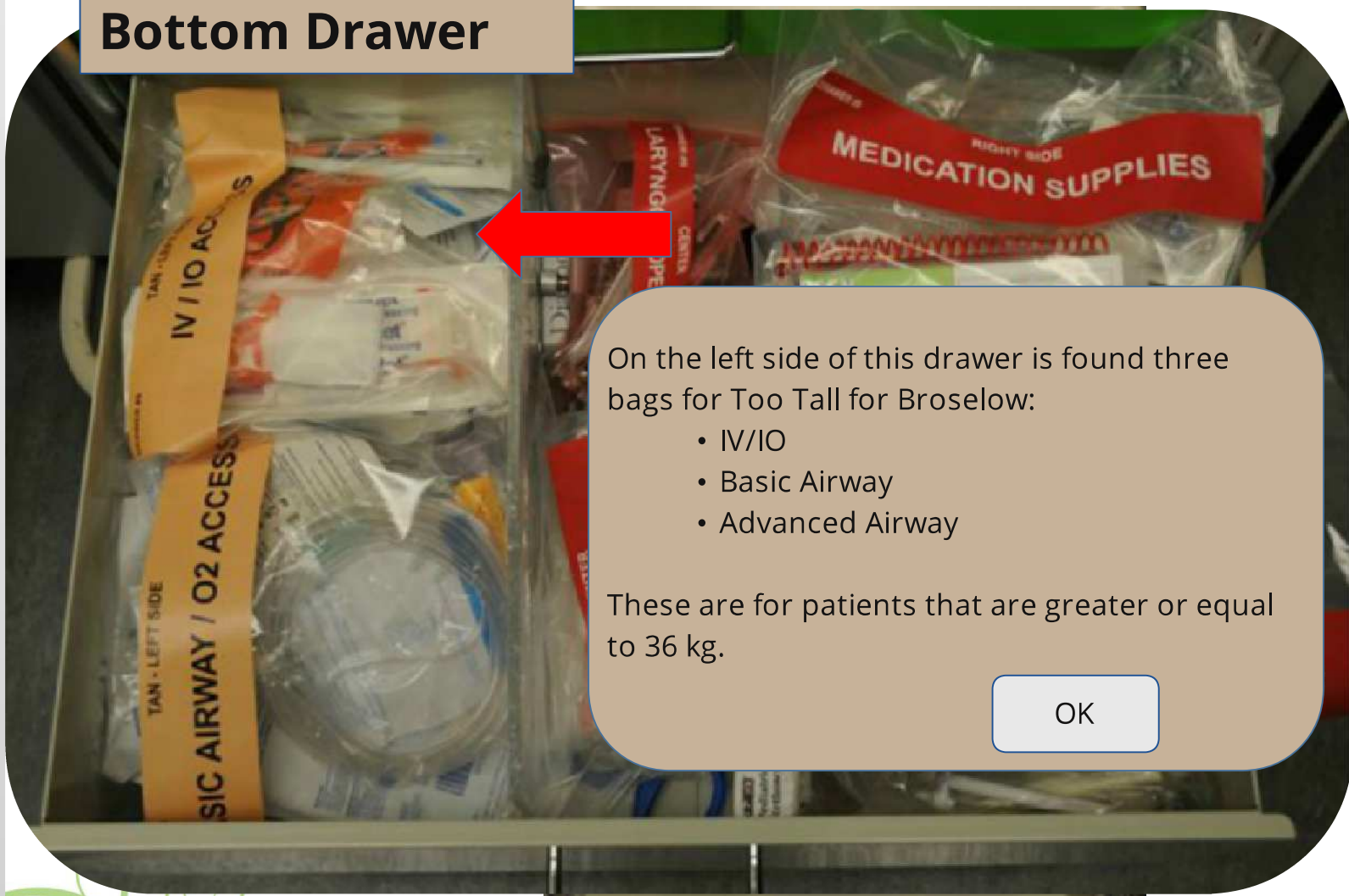
The Green Drawer has three bags:

- IV/IO
- Basic Airway
- Advanced Airway

OK

ALL bags in the cart contain supplies appropriate for patient size

Bottom Drawer



On the left side of this drawer is found three bags for Too Tall for Broselow:

- IV/IO
- Basic Airway
- Advanced Airway

These are for patients that are greater or equal to 36 kg.

OK

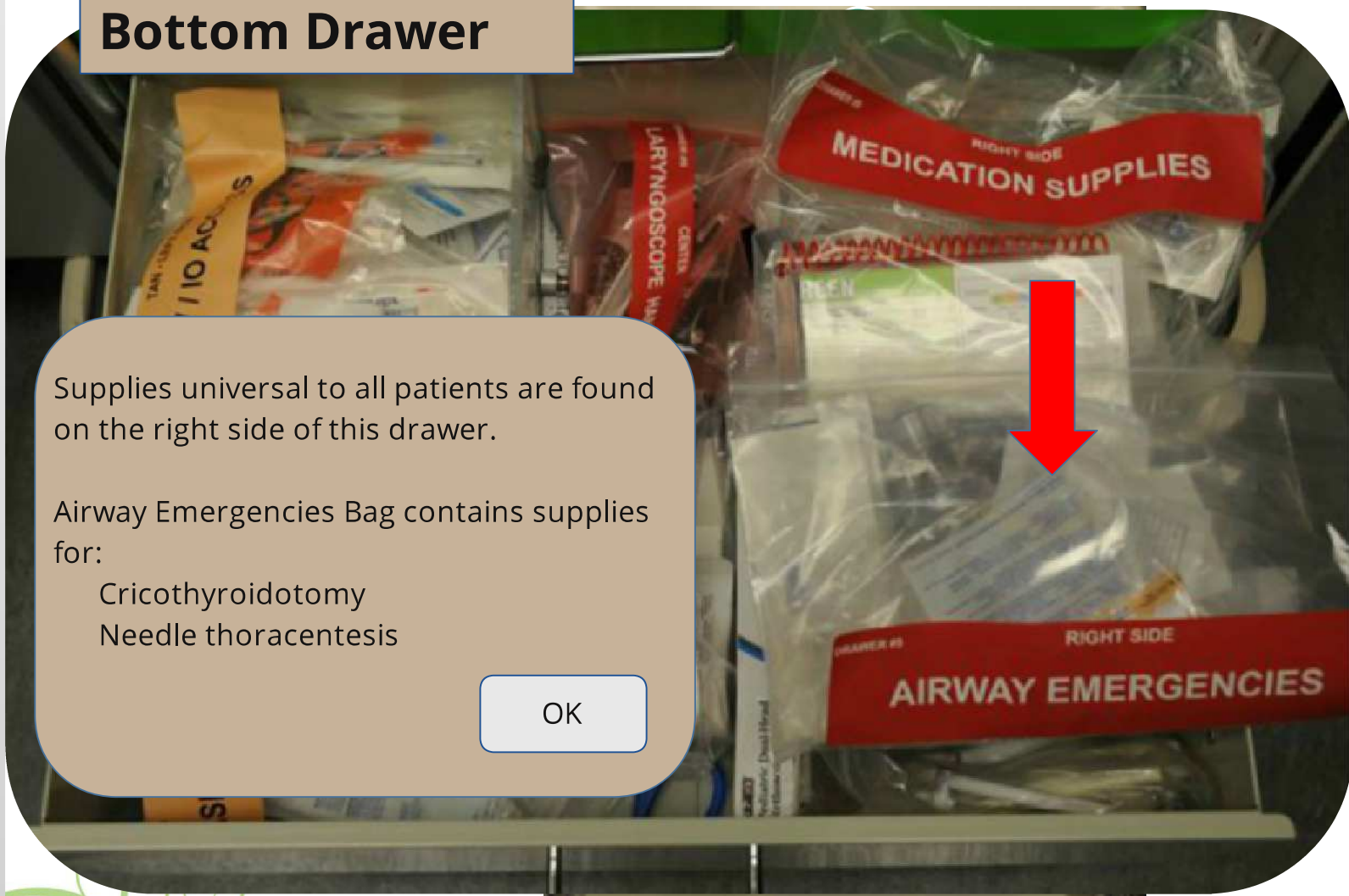
Bottom Drawer

Supplies universal to all patients are found on the right side of this drawer.

Airway Emergencies Bag contains supplies for:

- Cricothyroidotomy
- Needle thoracentesis

OK



Bottom Drawer

Supplies universal to all patients are found on the right side of this drawer.

Medication supply Bag with Supplies:

- PALS reference card

- ACLS handbook

- Broselow tape***

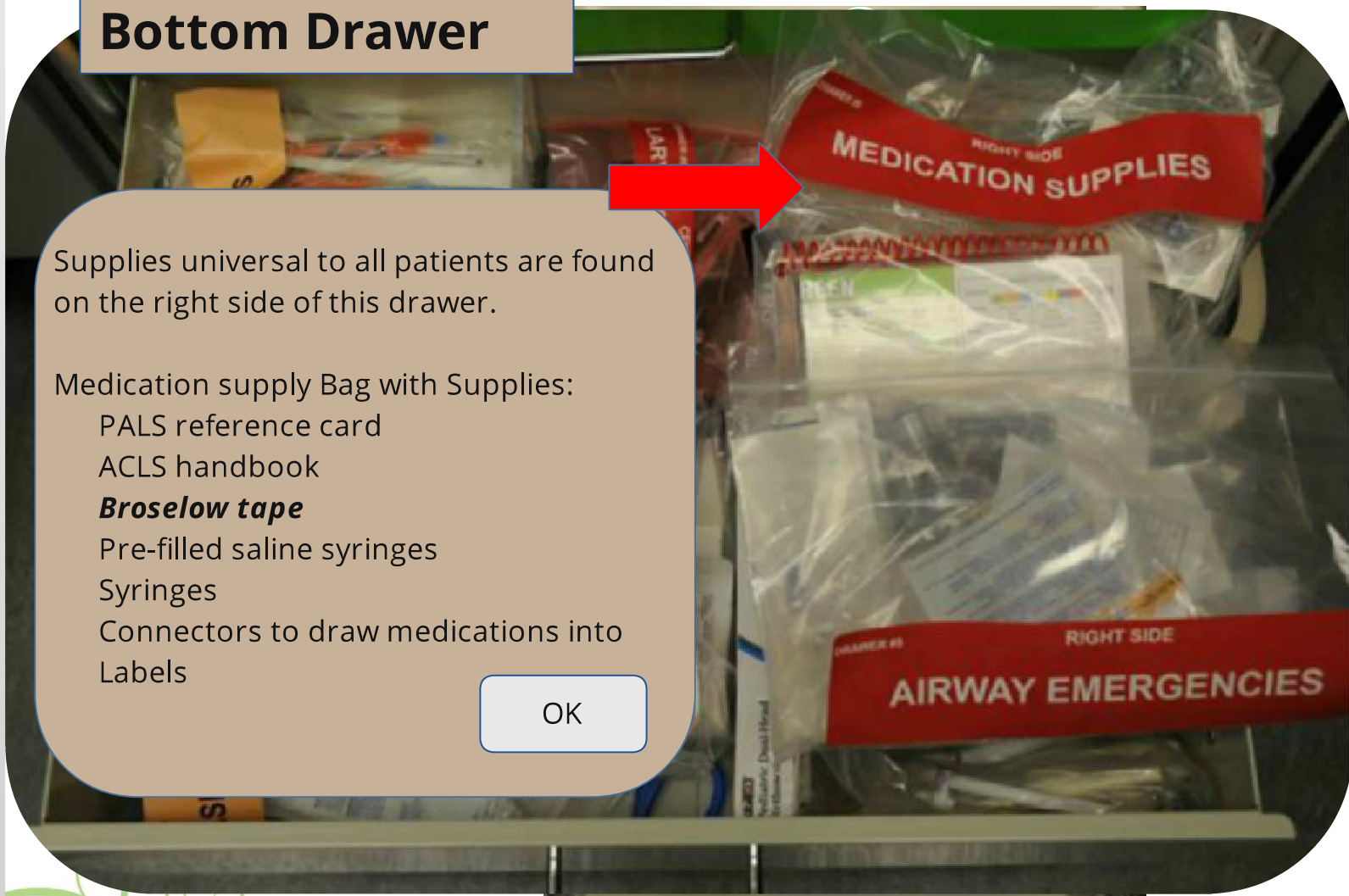
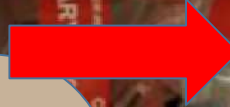
- Pre-filled saline syringes

- Syringes

- Connectors to draw medications into

- Labels

OK



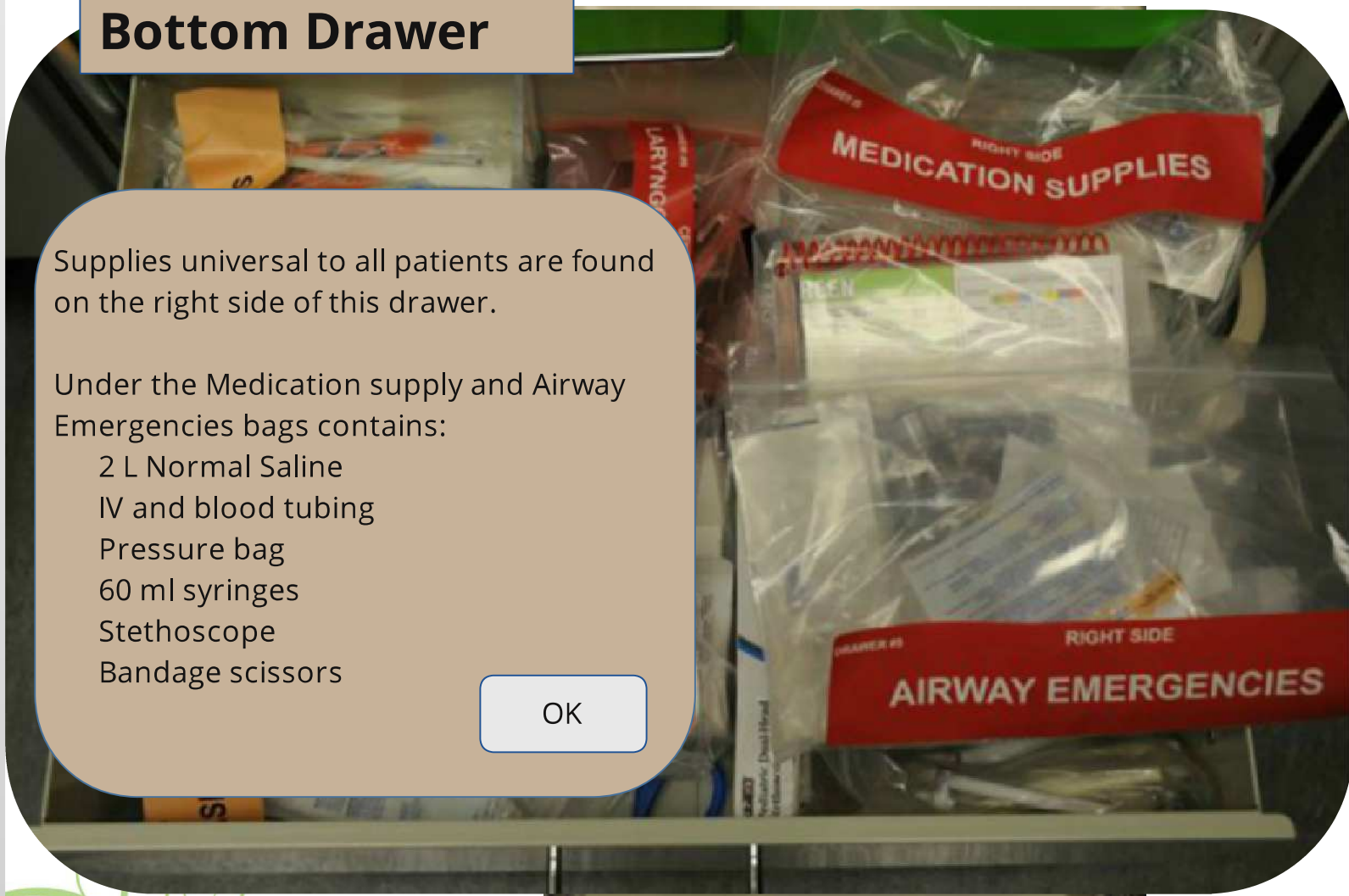
Bottom Drawer

Supplies universal to all patients are found on the right side of this drawer.

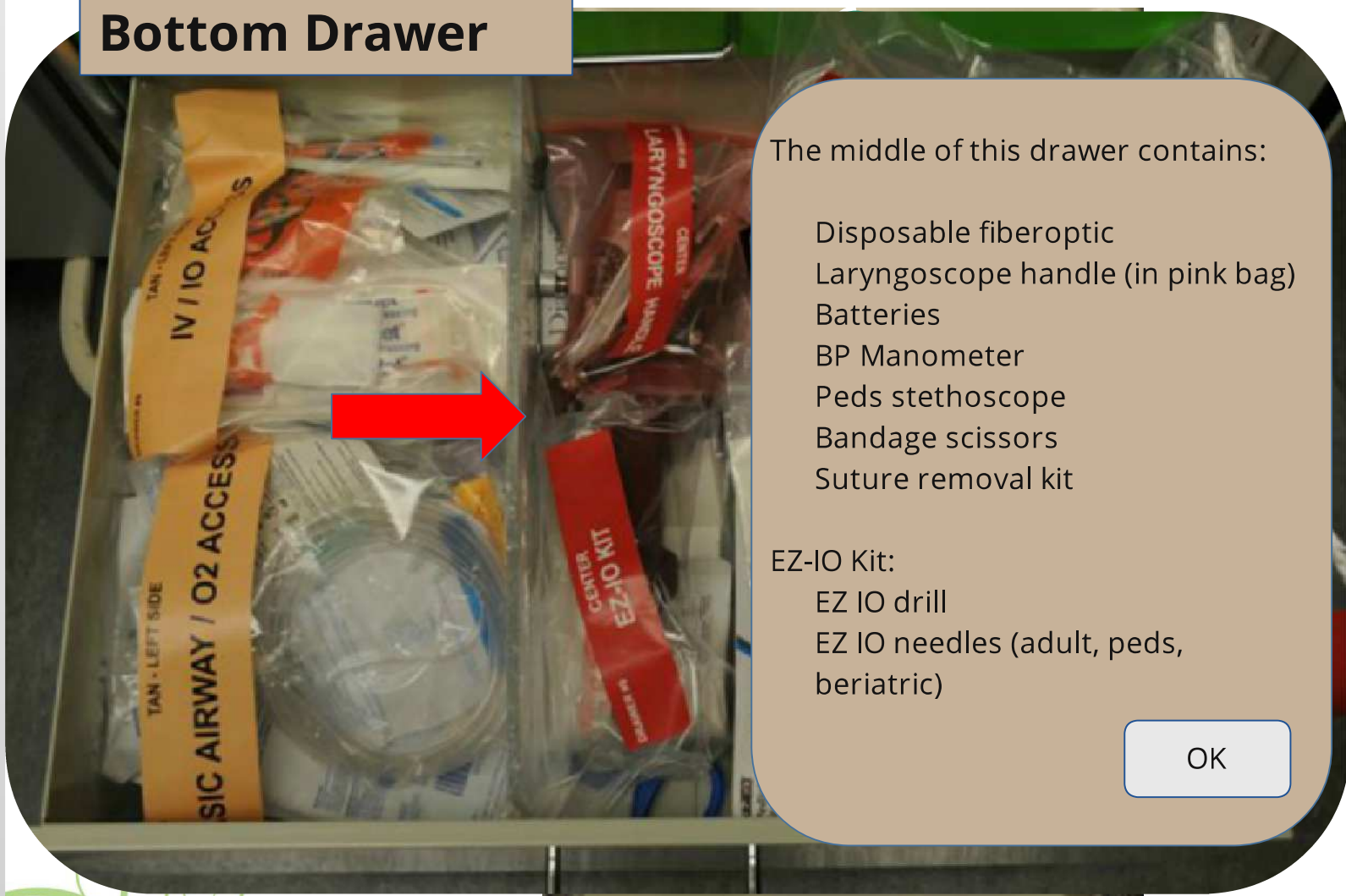
Under the Medication supply and Airway Emergencies bags contains:

- 2 L Normal Saline
- IV and blood tubing
- Pressure bag
- 60 ml syringes
- Stethoscope
- Bandage scissors

OK



Bottom Drawer



The middle of this drawer contains:

- Disposable fiberoptic Laryngoscope handle (in pink bag)
- Batteries
- BP Manometer
- Peds stethoscope
- Bandage scissors
- Suture removal kit

EZ-IO Kit:

- EZ IO drill
- EZ IO needles (adult, peds, bariatric)

OK